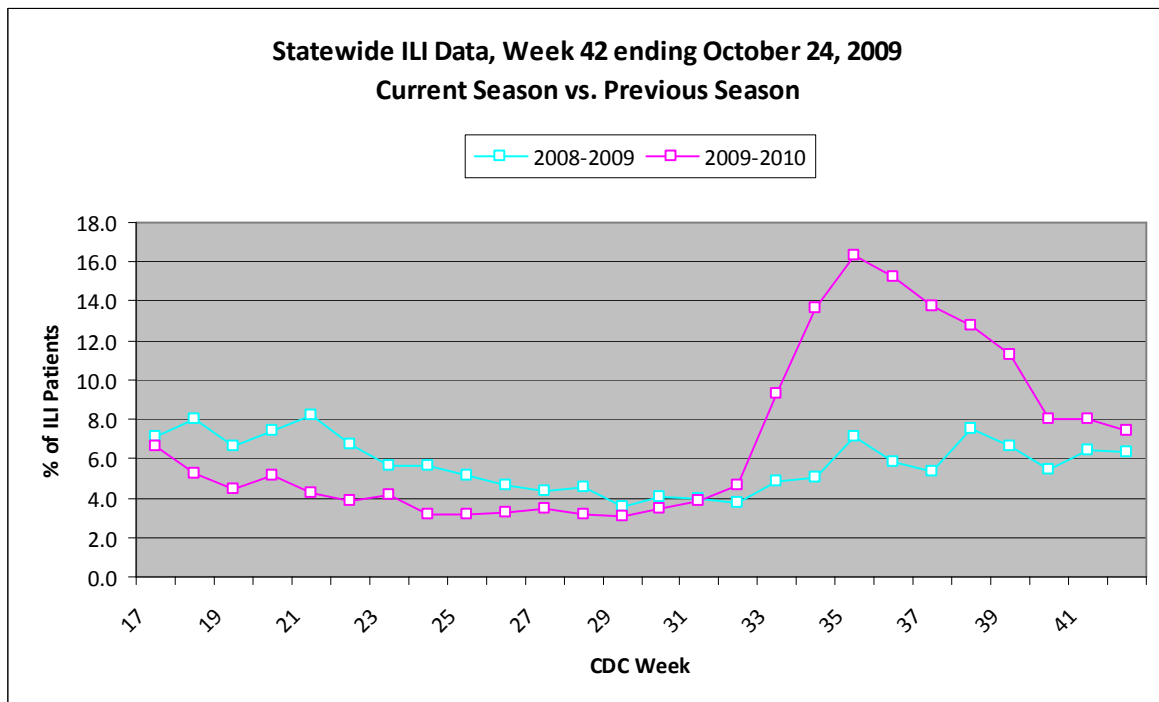
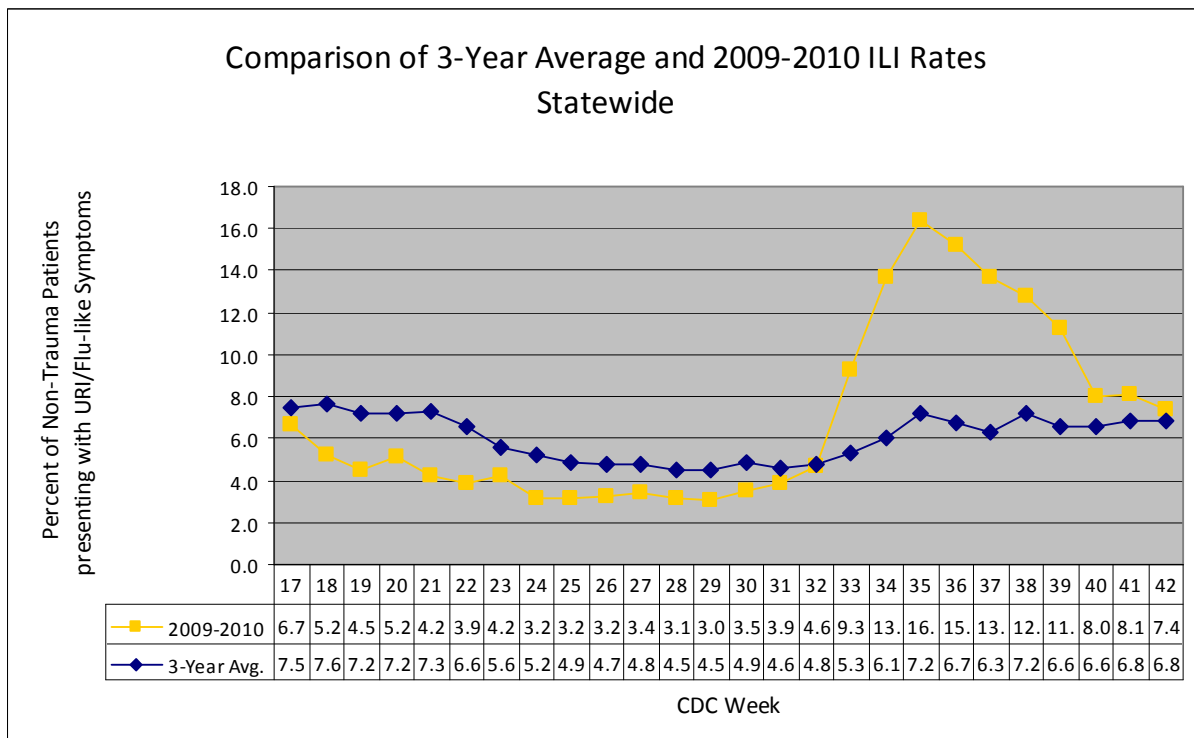


For week 42 (10/18/09- 10/24/09), the overall state ILI rate (7.4%) decreased from last week (8.1%), but was still higher than this time last year (6.4%).



New for the 2009-10 flu season is a comparison of 2009-10 ILI rates to the three-year average for each district and the state. The 2009-10 ILI rate for most districts and the state continues to be above baseline, but is decreasing each week.



During week 42, four districts (1, 2, 4, and 6) had a decrease in ILI activity, and one district (3) had an increase, and four remained about the same (5, 7, 8, and 9).

To date, 2,532 flu specimens have been submitted for testing to the MSDH PHL since April 27th. 1,208 lab-confirmed novel H1N1 specimens have been reported to MSDH. This total includes 288 positives reported from outside labs. There have been a total of 15 reported flu deaths, 9 that were confirmed H1N1. The positive cases and deaths were from the following counties:

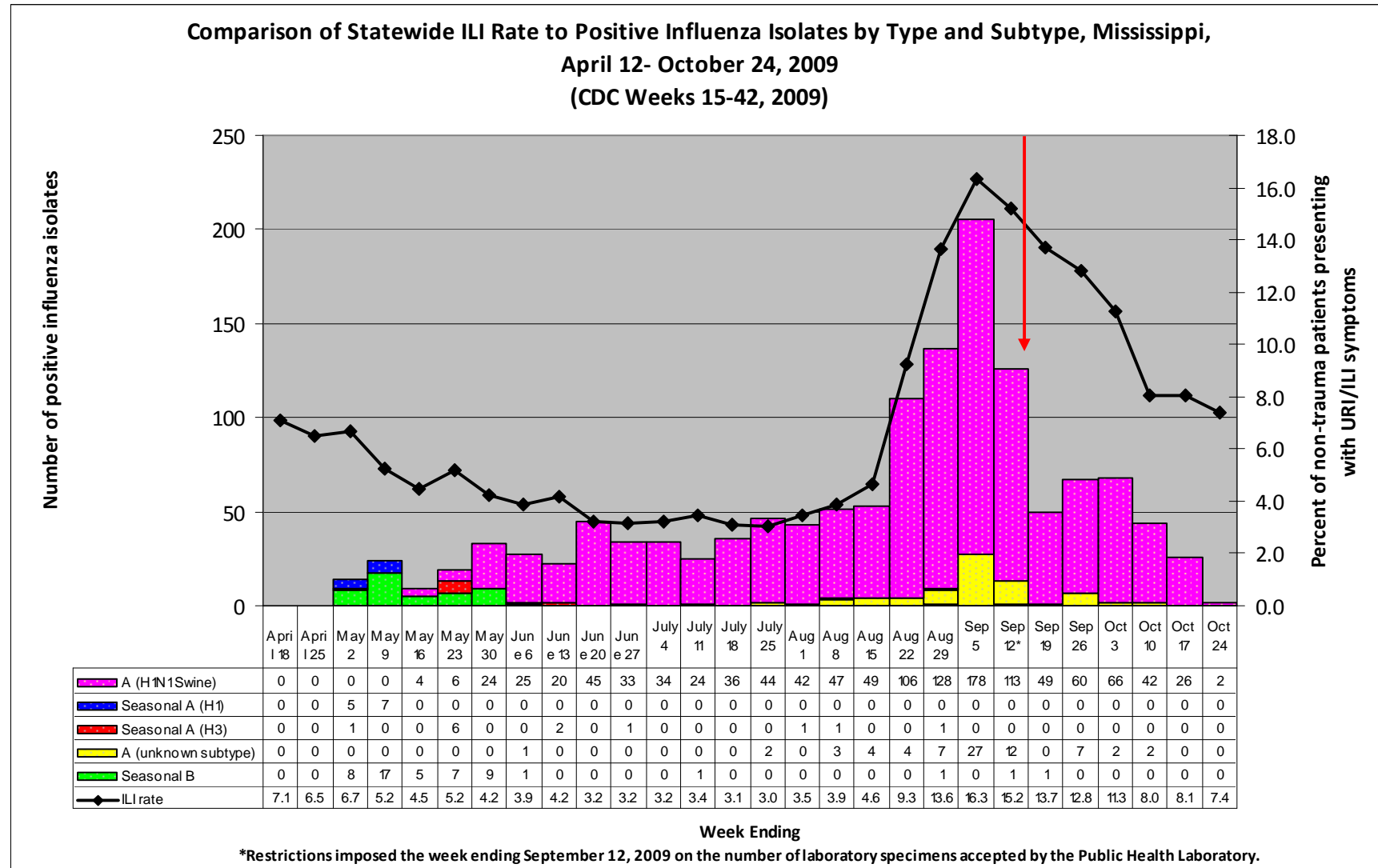
County	H1N1 Swine	All Flu Deaths	H1N1 Death	Other Flu Deaths*	Seasonal Flu**
Total	1208	15	9	6	147
Adams	7	0	0	0	0
Alcorn	7	1	0	1	1
Amite	0	0	0	0	0
Attala	6	0	0	0	0
Benton	1	0	0	0	0
Bolivar	11	0	0	0	0
Calhoun	16	0	0	0	0
Carroll	3	0	0	0	0
Chickasaw	11	0	0	0	2
Choctaw	6	0	0	0	0
Claiborne	1	0	0	0	0
Clarke	22	0	0	0	4
Clay	5	0	0	0	0
Coahoma	68	0	0	0	17
Copiah	8	0	0	0	1
Covington	10	1	1	0	0
DeSoto	68	0	0	0	19
Forrest	21	0	0	0	3
Franklin	3	0	0	0	0
George	6	0	0	0	0
Greene	4	0	0	0	0
Grenada	31	0	0	0	4
Hancock	14	2	2	0	4
Harrison	100	0	0	0	14
Hinds	58	1	0	1	13
Holmes	6	0	0	0	1
Humphreys	2	0	0	0	0
Issaquena	0	0	0	0	0
Itawamba	0	0	0	0	0
Jackson	88	2	1	1	3
Jasper	10	0	0	0	0
Jefferson	1	0	0	0	0
Jefferson Davis	2	0	0	0	0
Jones	15	4	3	1	1
Kemper	6	0	0	0	0
Lafayette	11	0	0	0	0
Lamar	21	0	0	0	1

Lauderdale	15	0	0	0	3
Lawrence	4	0	0	0	3
Leake	19	0	0	0	1
Lee	8	0	0	0	1
Leflore	6	0	0	0	2
Lincoln	10	0	0	0	4
Lowndes	12	0	0	0	1
Madison	46	0	0	0	4
Marion	46	0	0	0	0
Marshall	13	0	0	0	2
Monroe	17	0	0	0	2
Montgomery	8	0	0	0	3
Neshoba	17	0	0	0	3
Newton	6	0	0	0	2
Noxubee	3	0	0	0	1
Oktibbeha	24	0	0	0	3
Panola	34	0	0	0	0
Pearl River	8	0	0	0	0
Perry	2	0	0	0	0
Pike	11	0	0	0	3
Pontotoc	2	0	0	0	0
Prentiss	2	0	0	0	0
Quitman	11	0	0	0	0
Rankin	46	0	0	0	9
Scott	13	0	0	0	0
Sharkey	0	0	0	0	0
Simpson	2	0	0	0	0
Smith	5	0	0	0	0
Stone	2	0	0	0	1
Sunflower	4	0	0	0	0
Tallahatchie	3	0	0	0	0
Tate	26	1	0	1	4
Tippah	1	1	1	0	0
Tishomingo	2	0	0	0	1
Tunica	13	0	0	0	0
Union	4	0	0	0	0
Walthall	17	0	0	0	1
Warren	7	0	0	0	0
Washington	11	2	1	1	2
Wayne	1	0	0	0	0
Webster	8	0	0	0	0
Wilkinson	1	0	0	0	0
Winston	40	0	0	0	3
Yalobusha	9	0	0	0	0
Yazoo	15	0	0	0	0
Unknown	5	0	0	0	0

*Includes Flu A- Inconclusive, Equivocal, and Unable to Subtype, Seasonal Flu, and Rapid Flu positive.

**Includes Flu A- Inconclusive, Equivocal, and Unable to Subtype, and Seasonal Flu.

Below is a comparison of the state ILI rate to the number of positive influenza isolates since mid- April. Starting in late May and into October, the predominant flu type identified continues to be novel H1N1 (swine) flu.



Mississippi reported “widespread” (Outbreaks of influenza or increases in ILI cases and recent laboratory-confirmed influenza in at least half the regions of the state with recent laboratory evidence of influenza in the state) activity for week 42. For more information on flu activity nationwide, please refer to the CDC’s website at: <http://www.cdc.gov/flu/weekly/fluactivity.htm>.

