

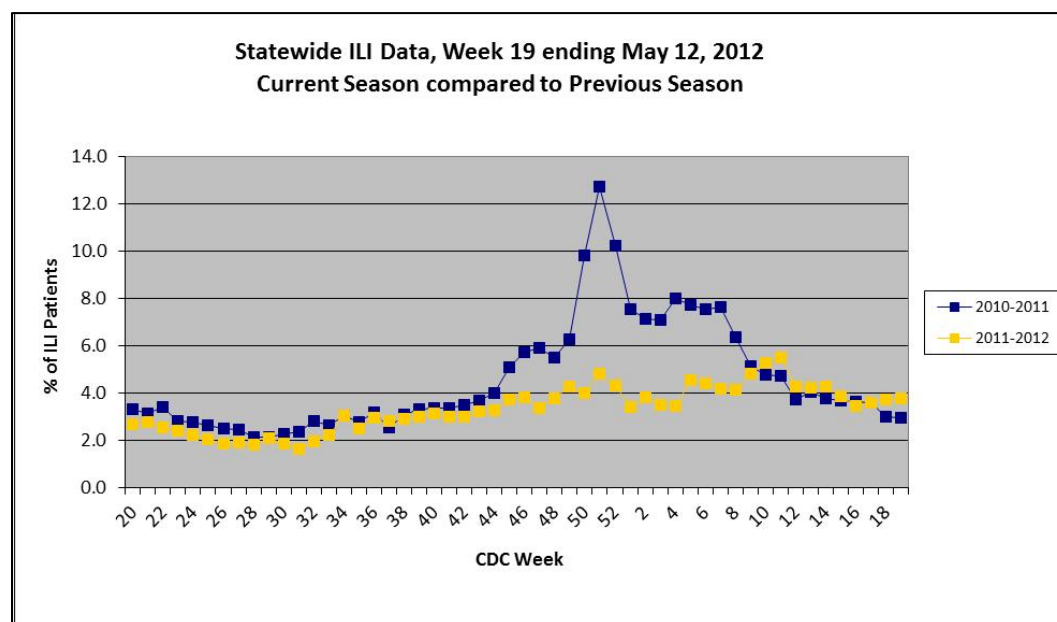


# 2011-2012 Influenza Report Week 19 May 6 – May 12, 2012

## About our flu activity reporting

MSDH relies upon selected sentinel health practitioners across the state to report the percentage of non-trauma visits consistent with an influenza-like illness (ILI: fever > 100°F AND cough and/or sore throat). Also, providers are supplied with specimen collection kits: Samples are submitted to the Mississippi Public Health Laboratory for influenza PCR testing. Reports are used to estimate the state's ILI rate and the magnitude of the state's influenza activity. Reports represent only the distribution of flu in the state, not an actual count of all flu cases statewide. **Information is provisional only and may change depending on additional reporting from sentinel providers.**

## State ILI Surveillance



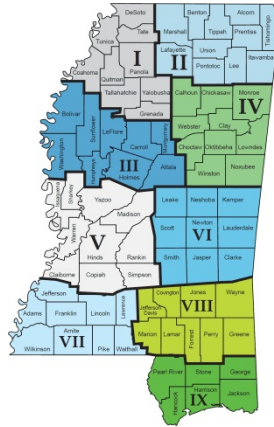
For week 19 (05/06/2012-05/12/2012), the overall state ILI rate (**3.8%**) was **comparable** to last week (**3.7%**), but was slightly increased compared to this time last year (**3.0%**). For the past eight weeks,

the state ILI has remained stable. | **Figure 1**

Total number of non-trauma patients treated by sentinel providers in the last three weeks. | **Table 1**

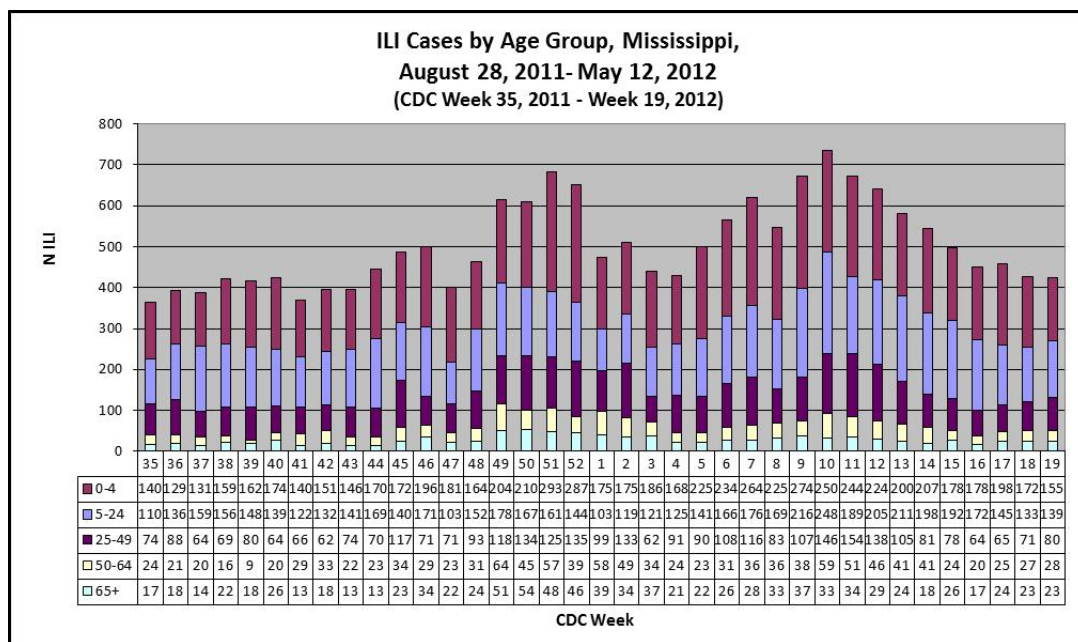
2011-2012 Influenza Season				
CDC Week	Week Ending	Non-trauma patients	ILI symptoms	ILI Rate (%)
<b>19</b>	<b>May 12</b>	<b>11237</b>	<b>425</b>	<b>3.8%</b>
18	May 5	11597	434	3.7%
17	Apr. 28	12961	463	3.6%

During week **19**, **two** districts (8 and 9) had an increase in ILI activity, while **four** districts (2, 3, 5, and 6) had a decrease. **Three** districts (1, 4, and 7) remained about the same. *Information is provisional only and may change depending on additional reporting from sentinel providers.* / **Table 2**



MS Public Health Districts | Map

MSDH District ILI Rates (%) 2011-2012		
District	Week 18	Week 19
<i>State</i>	3.7	3.8
I	1.6	1.5
II	5.4	1.4
III	3.9	2.4
IV	5.3	5.7
V	1.2	0.5
VI	8.0	7.1
VII	2.6	2.3
VIII	5.1	6.7
IX	4.0	5.2



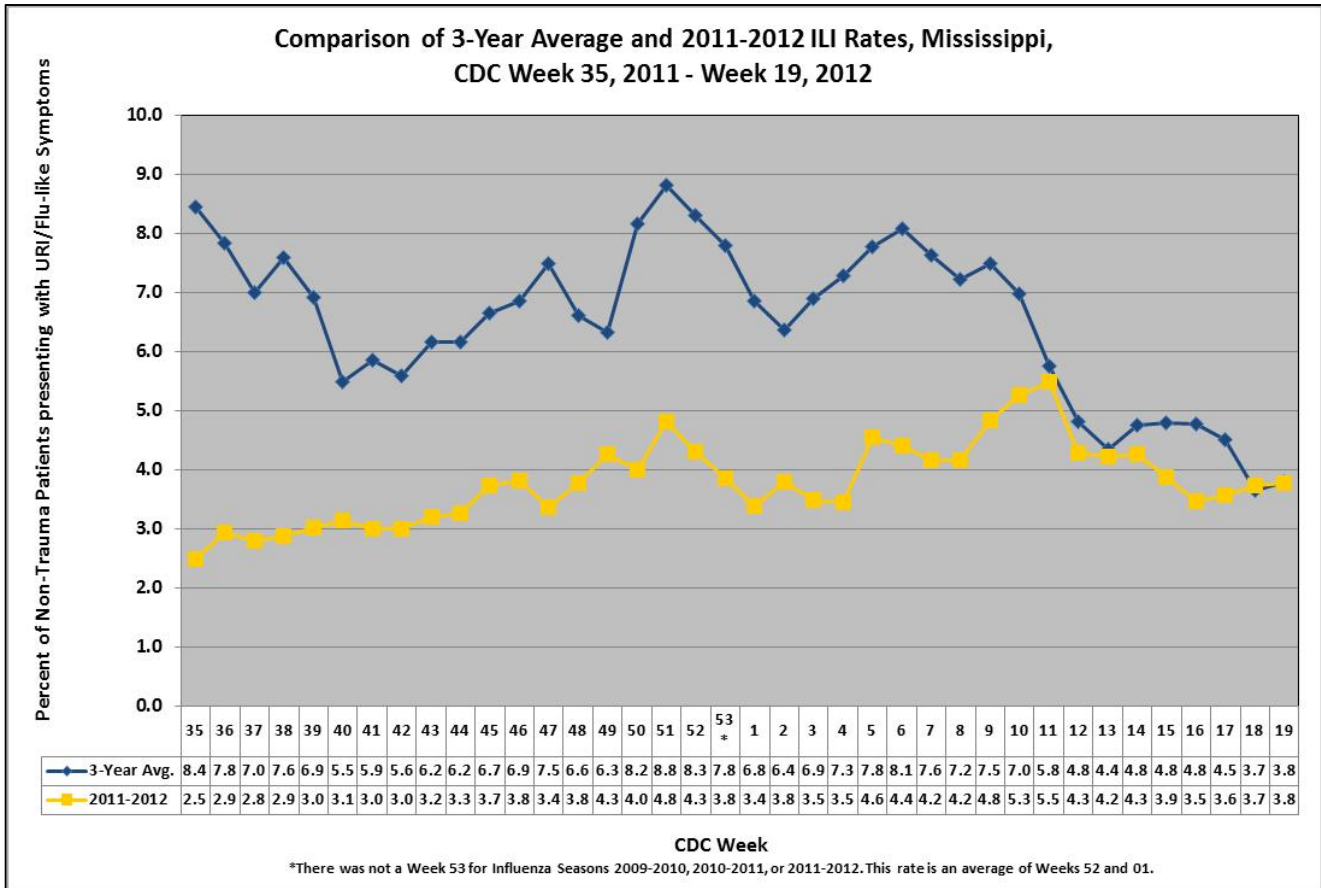
The number of reported ILI cases has been highest among people in the 0 to 4 years of age group, followed by those in the 5 to 24 years of age group.

During Week

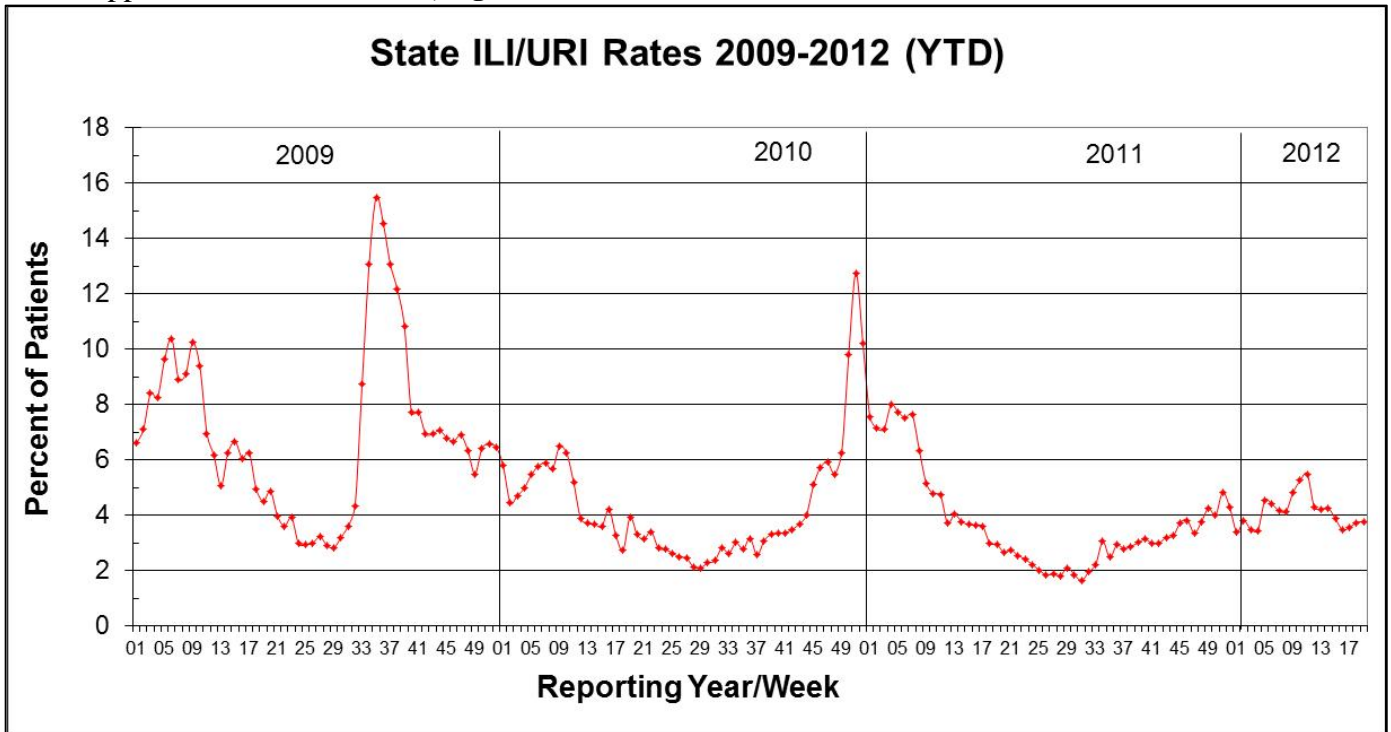
**19**, the number of reported ILI cases was highest among individuals in the **0-4 years** of age group. |

**Figure 2**

The 2011-12 state ILI rate was **comparable** to the baseline for week **19**. | **Figure 3**



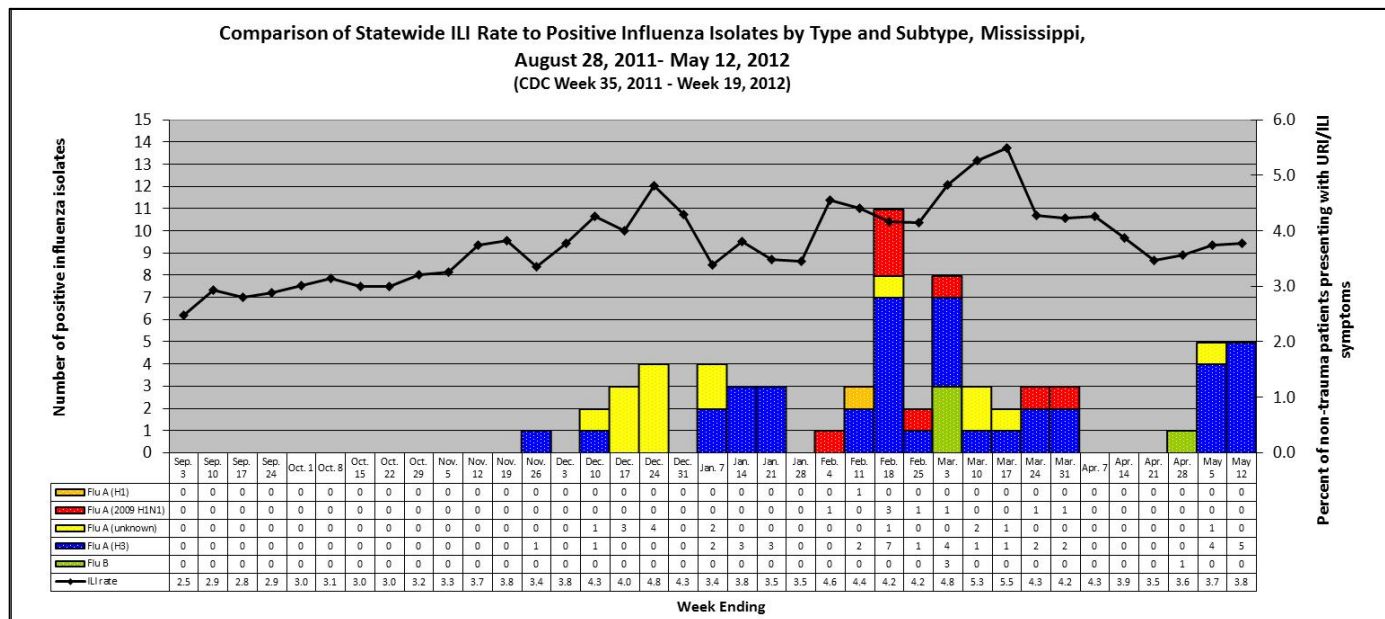
Mississippi ILI Rates 2009-2012 | **Figure 4**



## Flu testing Reports

From week **35** (week ending September 3<sup>rd</sup>) through week **19** (week ending May 12<sup>th</sup>), sixty-seven (**67**) positive influenza samples were identified by MSDH. Sixty-three were influenza A and four were influenza B. Thirty-nine were subtyped as influenza A (H3) and nine were subtyped as influenza A (H1). Fifteen samples did not have subtyping performed.

The influenza cases were identified from the following counties: Attala (2), Benton, Calhoun (4), Chickasaw, Coahoma, Copiah (2), Covington, DeSoto (2), Forrest, Harrison (3), Hinds (8), Lawrence, Leflore, Lincoln, Marshall (9), Monroe (2), Neshoba, Oktibbeha, Panola, Pike, Prentiss, Rankin (4), Stone, Tate (2), Warren (2), Wayne (3), and Yazoo (10). | **Figure 5**



## National ILI Surveillance

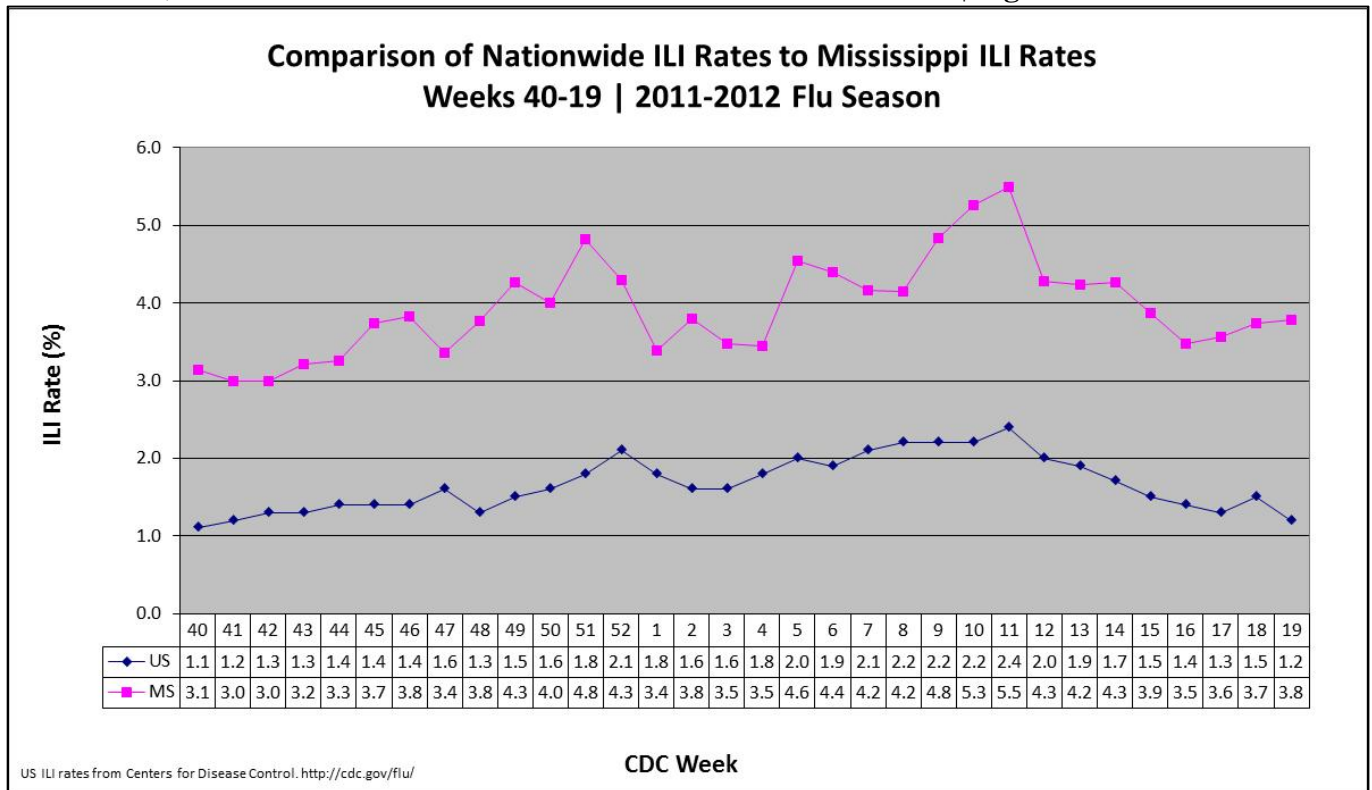
**Nationally**, there were **two** influenza-associated pediatric deaths reported to CDC during week **19**. One was associated with an influenza B virus and the other was associated with an influenza A virus for which the subtype was not determined. The reported deaths occurred during week 17 (week ending April 28<sup>th</sup>). The total number of influenza-associated pediatric deaths reported during the 2011-2012 season is **24**. Additional data can be found at: <http://gis.cdc.gov/GRASP/Fluview/PedFluDeath.html>.

**Mississippi has had no reported influenza-associated pediatric deaths during this influenza season.**

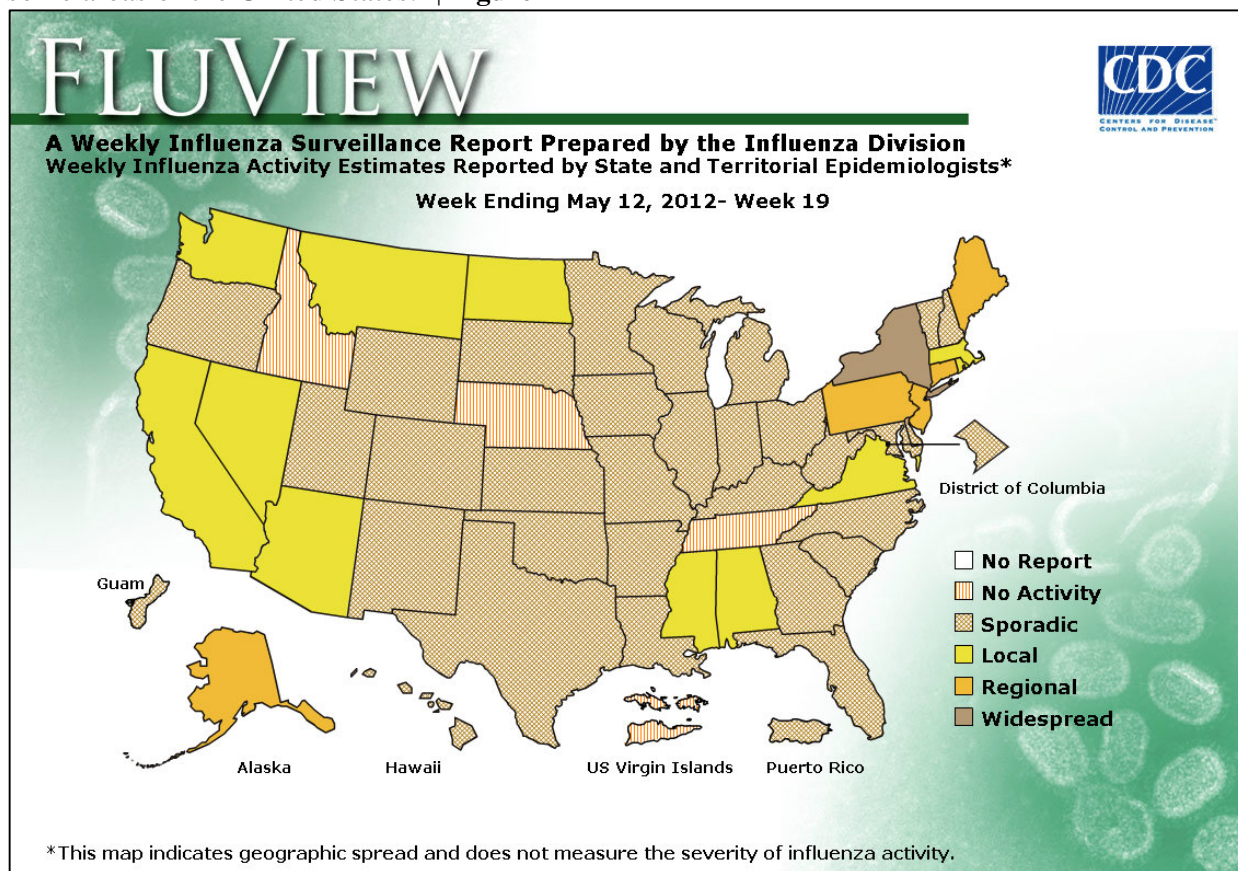
Mississippi reported “**Local**” activity for week **19**. | **Table 4**

Level of Flu Activity	Definition
<b>No Activity</b>	Overall clinical activity remains low and there are no lab confirmed cases.
<b>Sporadic</b>	Isolated cases of lab confirmed influenza in the state; ILI activity is not increased <u>OR</u> A lab-confirmed outbreak in a single institution in the state; ILI activity is not increased.
<b>Local</b>	Increased ILI within a single region <b>AND</b> recent (within the past 3 weeks) laboratory evidence of influenza in that region. ILI activity in other regions is not increased <u>OR</u> two of more institutional outbreaks (ILI or lab confirmed) within a single region <b>AND</b> recent (within the past 3 weeks) lab confirmed influenza in that region. Other regions do not have increased ILI and virus activity is no greater than sporadic in those regions
<b>Regional</b>	Increased ILI in at least 2 regions but fewer than half of the regions <b>AND</b> recent (within the past 3 weeks) lab confirmed influenza in the affected regions <u>OR</u> Institutional outbreaks (ILI or lab confirmed) in at least 2 regions but fewer than half of the regions <b>AND</b> recent lab confirmed influenza in the affected regions.
<b>Widespread</b>	Increased ILI and/or institutional outbreaks (ILI or lab confirmed) in at least half of the regions <b>AND</b> recent (within the past 3 weeks) lab confirmed influenza in the state.

For week **19**, the MS ILI rate continued to remain **above** the national rate. | **Figure 6**



During week **19**, influenza activity declined nationally and in most regions, but remained elevated in some areas of the United States.<sup>1</sup> | **Figure 7**



<sup>1</sup>For up-to-date information on flu activity nationwide, please refer to the CDC's website:  
<http://www.cdc.gov/flu/weekly/fluactivity.htm>

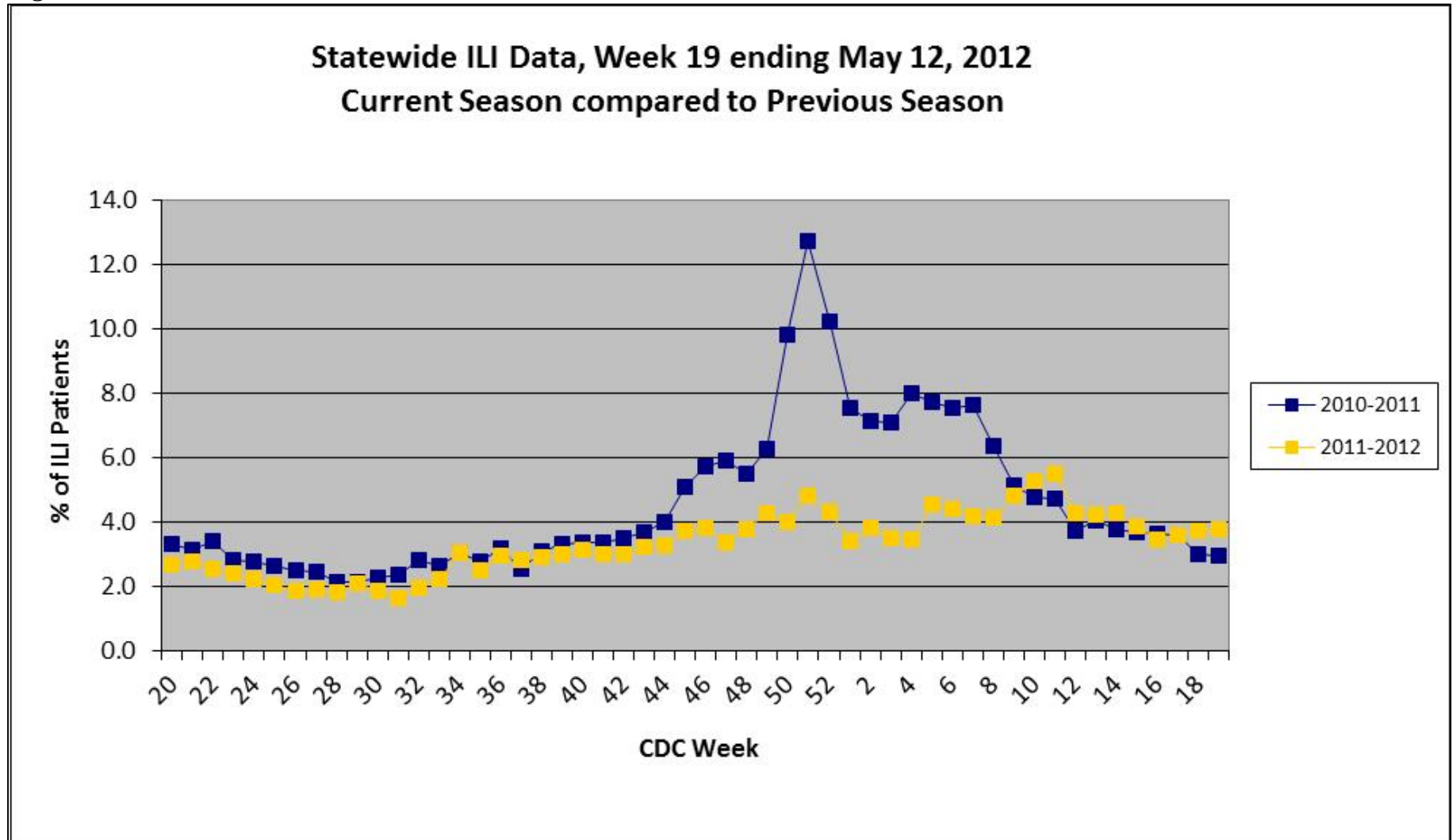
#### Additional information:

Centers for Disease Control and Prevention	<a href="http://cdc.gov/flu/">http://cdc.gov/flu/</a>
Flu.gov	<a href="http://www.flu.gov/">http://www.flu.gov/</a>
MSDH Flu and Pneumonia	<a href="http://msdh.ms.gov/msdhsite/_static/14,0,199.html">http://msdh.ms.gov/msdhsite/_static/14,0,199.html</a>
Google Flu Trends	<a href="http://www.google.org/flutrends/">http://www.google.org/flutrends/</a>
World Health Organization FluNet	<a href="http://www.who.int/csr/disease/influenza/influenzanetwork/flunet/en/">http://www.who.int/csr/disease/influenza/influenzanetwork/flunet/en/</a>

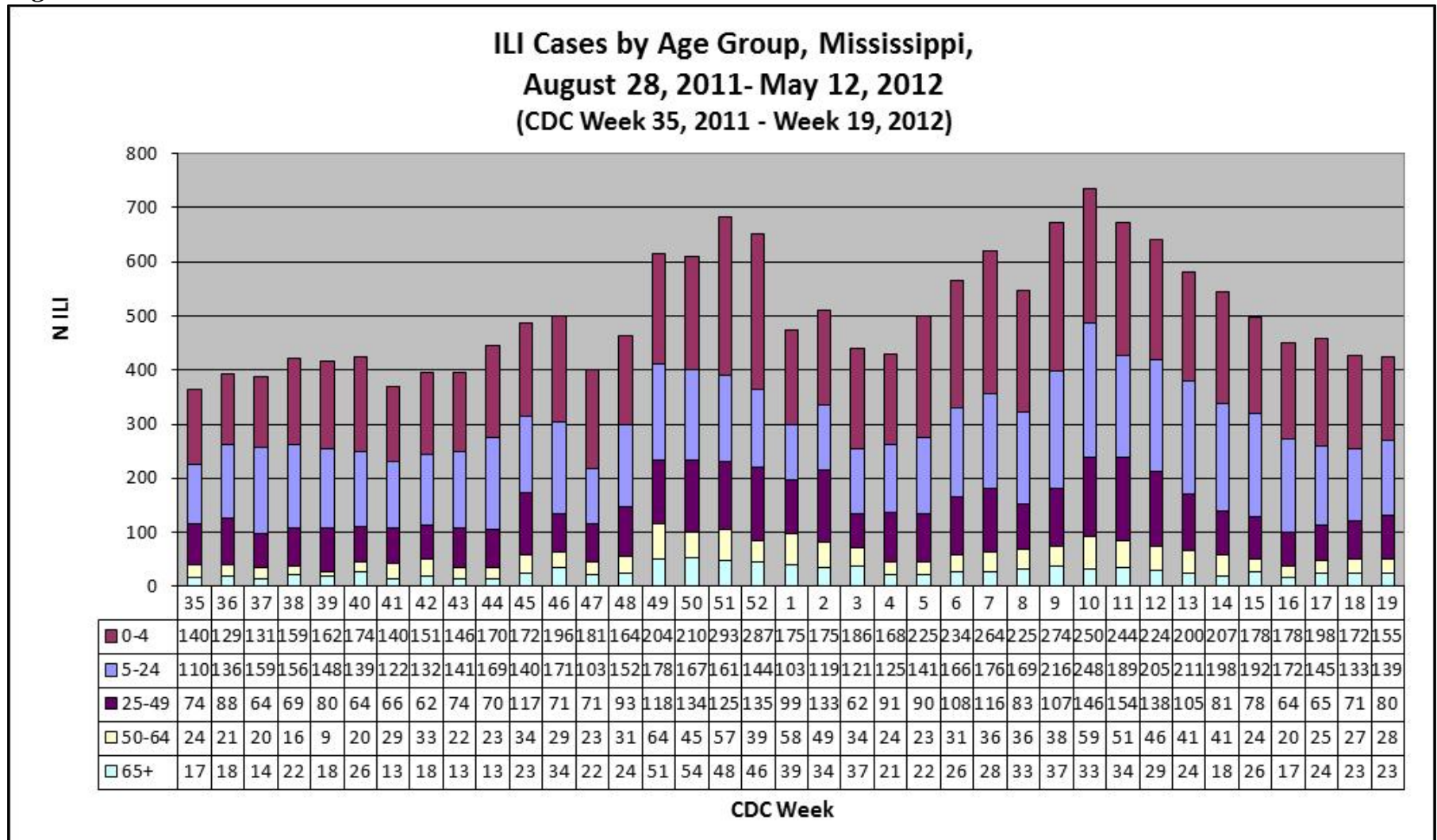
*Page intentionally blank*

## Appendix

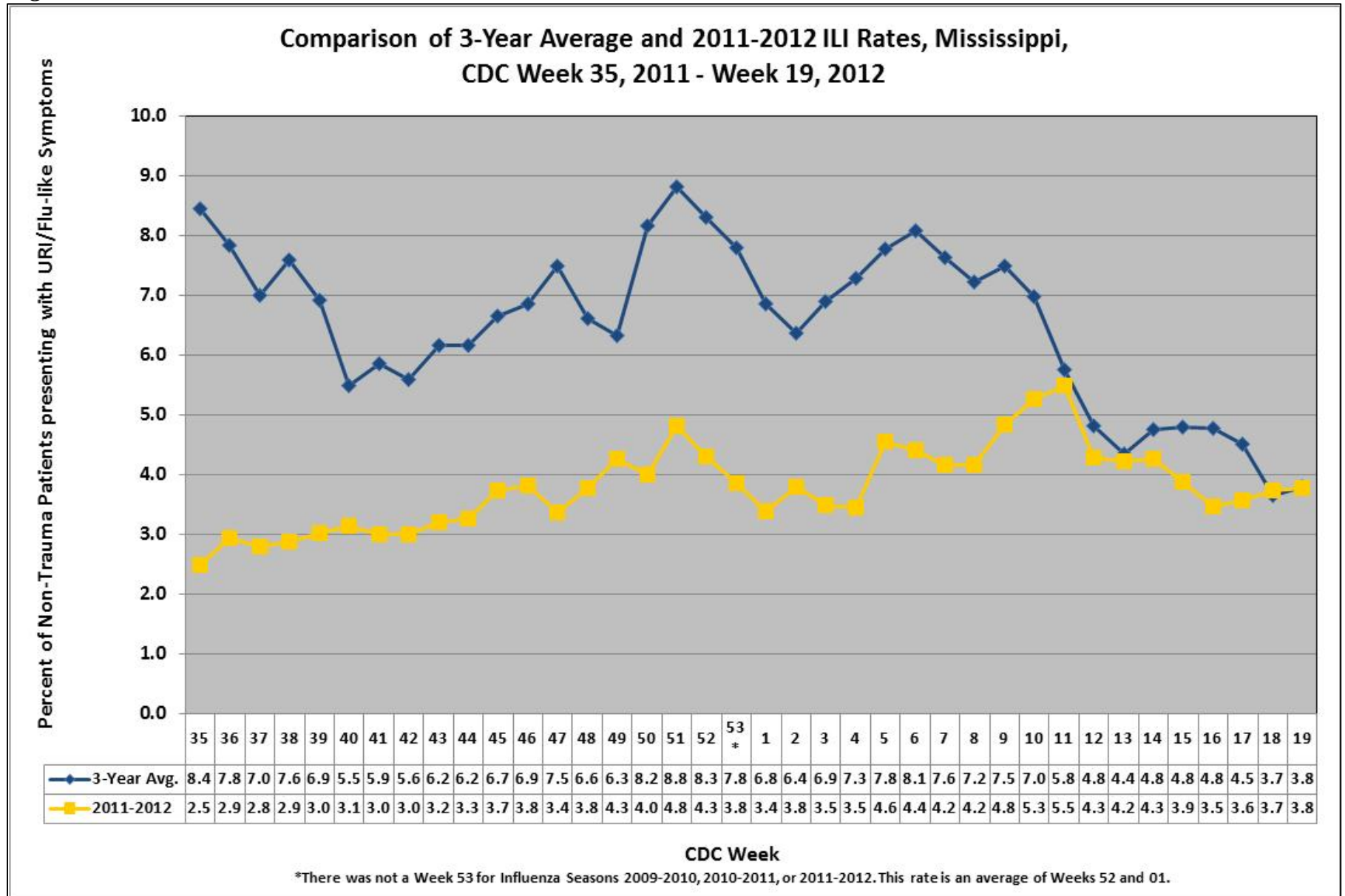
*Figure 1*



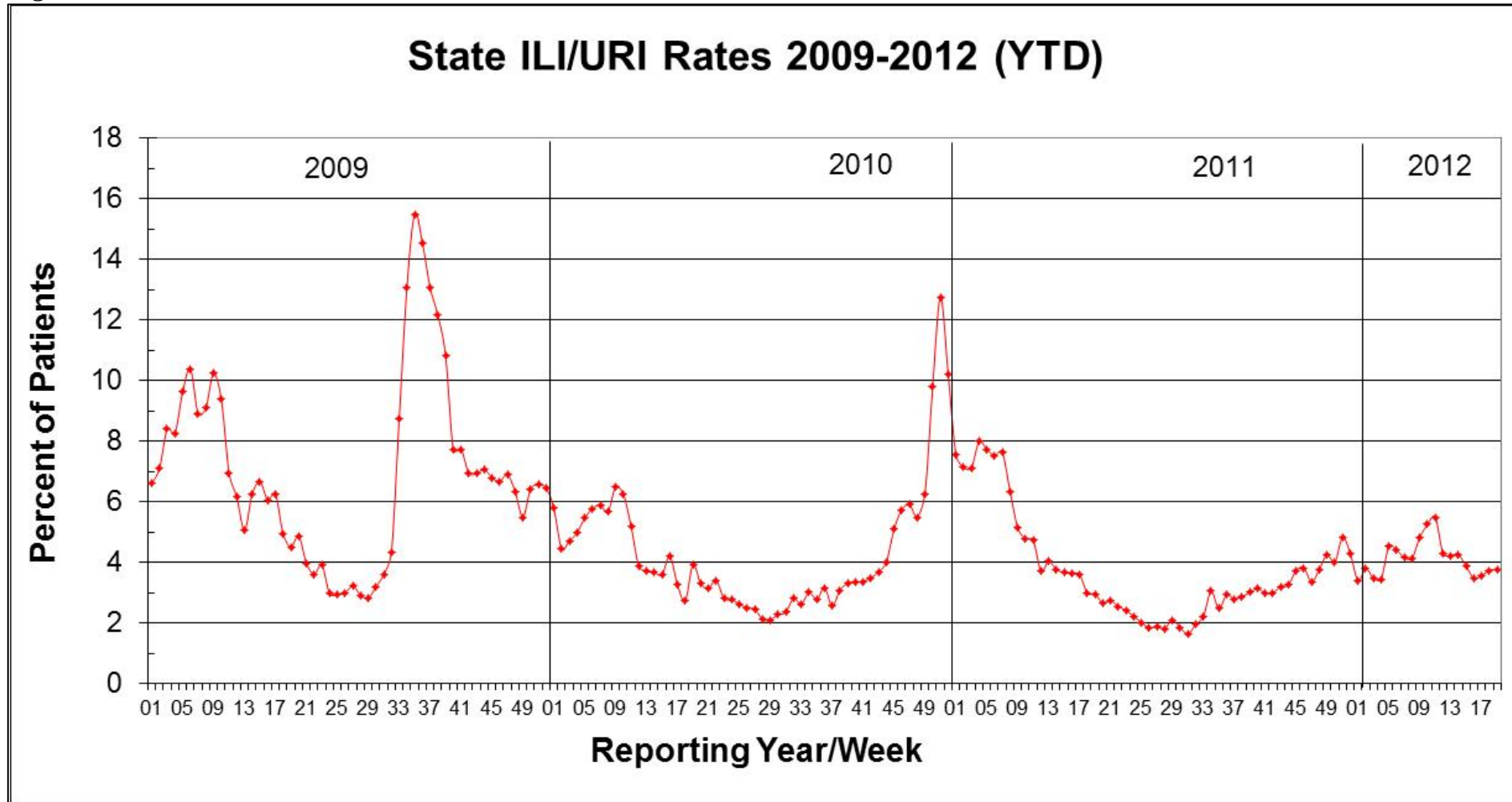
**Figure 2**



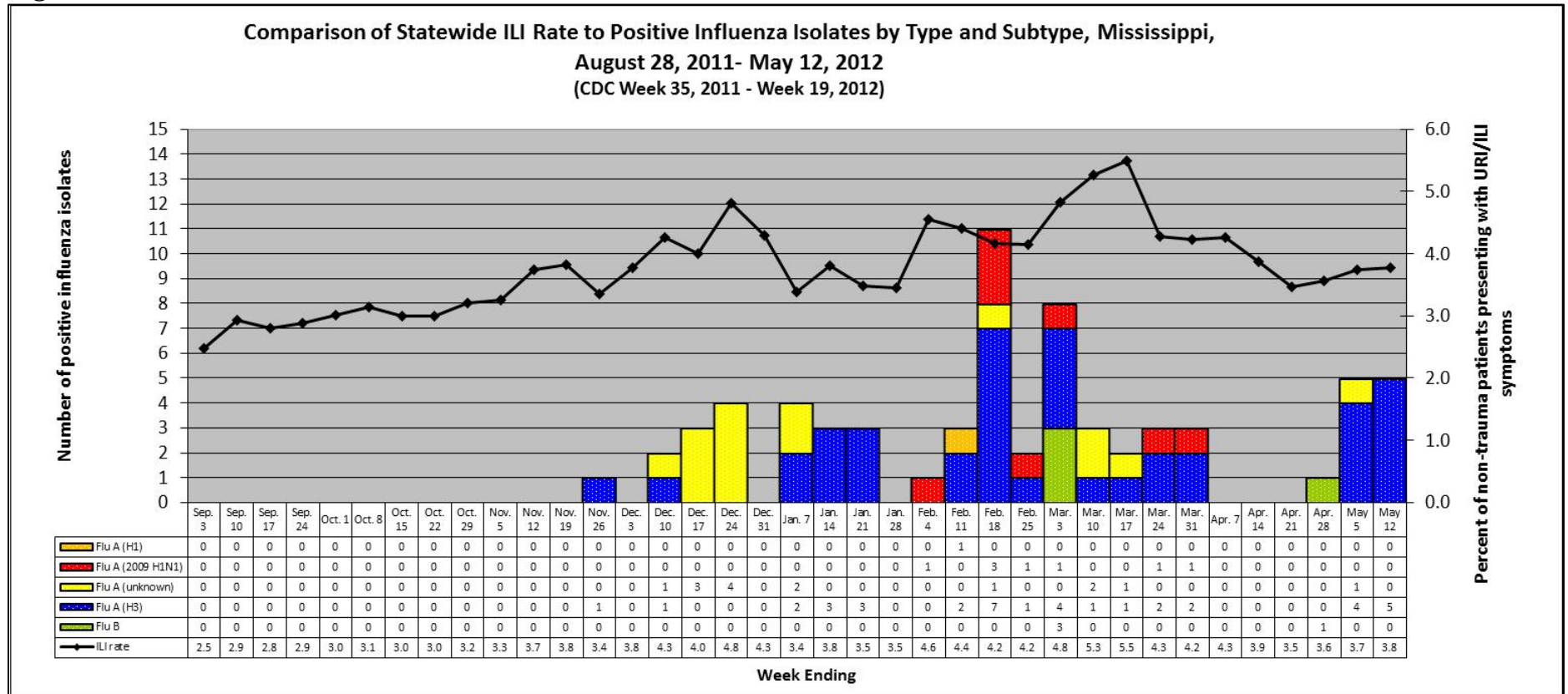
**Figure 3**



**Figure 4**



**Figure 5**



**Figure 6**

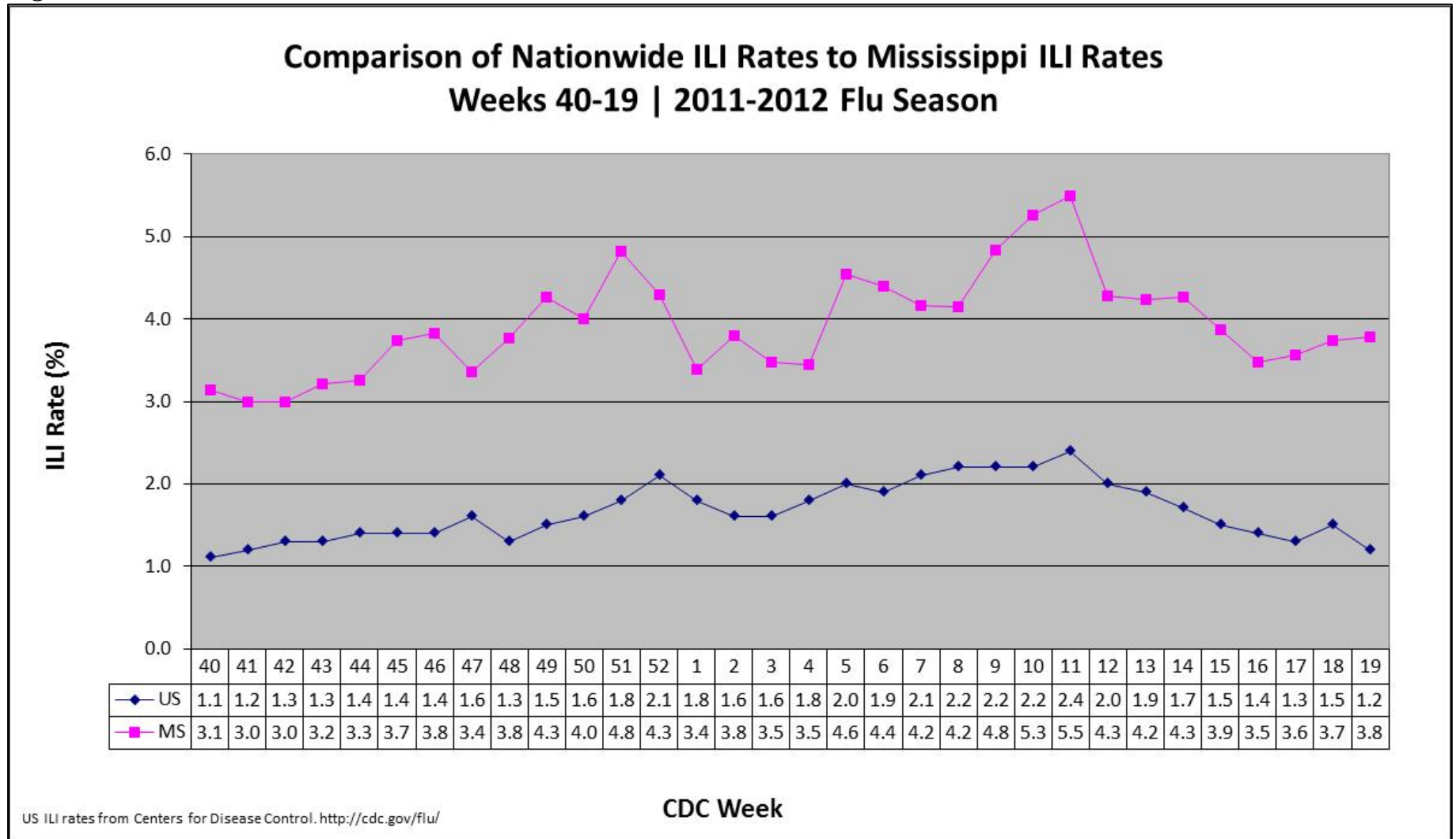


Figure 7

