



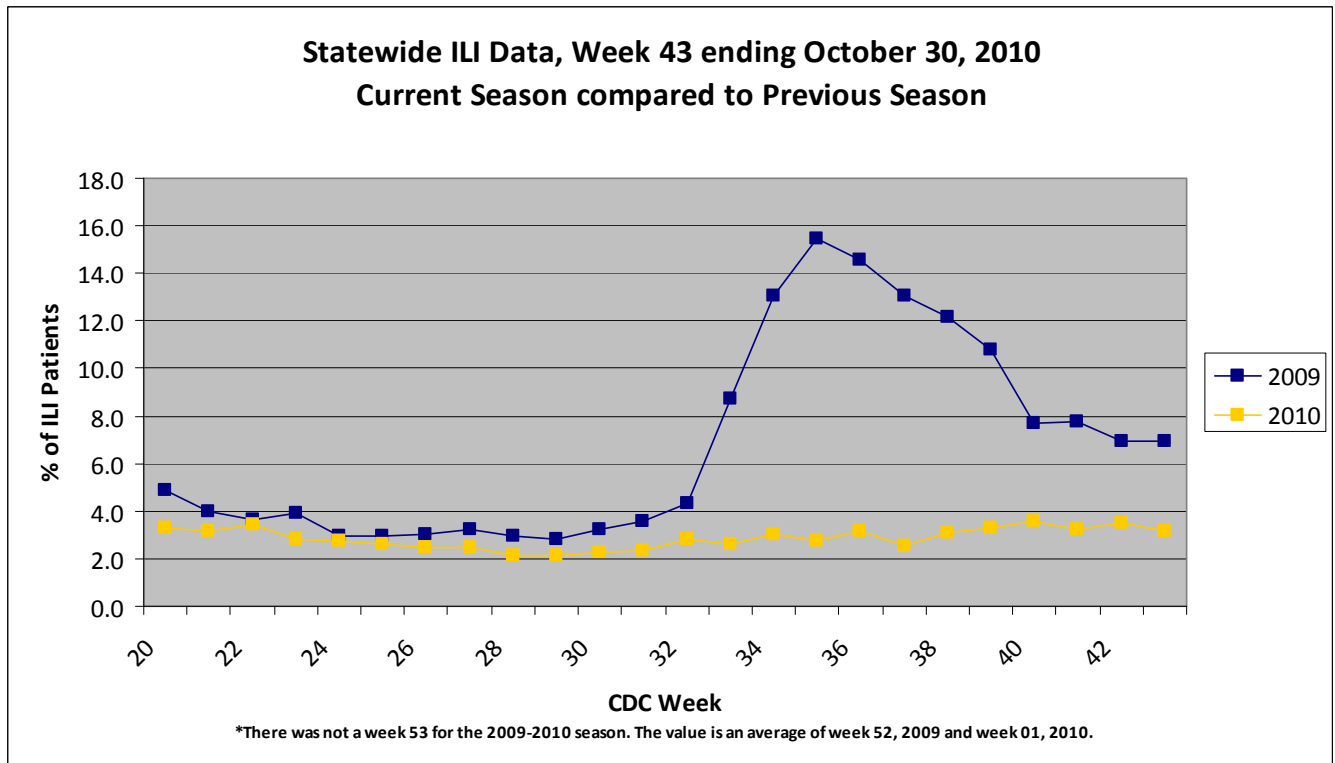
2010-2011 Influenza Report Week 43 October 24 - 30

About our flu activity reporting

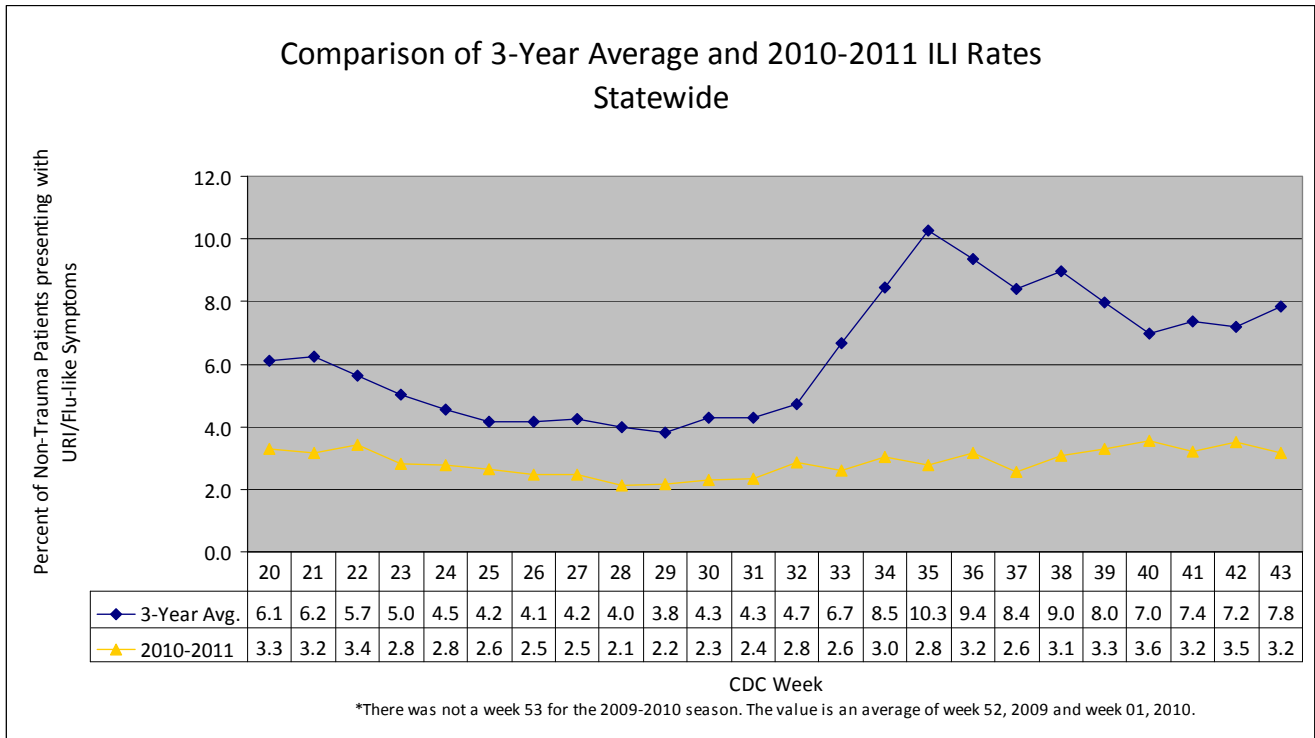
MSDH relies upon selected health practitioners across the state to report possible flu cases (cases of influenza-like illness) for confirmation by laboratory testing. Our reports below show **only** cases confirmed as influenza by the MSDH Public Health Laboratory, and represent the distribution of flu in the state, not an actual count of all flu cases statewide.

State ILI Surveillance

For week 43 (10/24/10-10/30/10), the overall state ILI rate (3.2%) was comparable to last week (3.5%), but was lower than this time last year (6.9%).



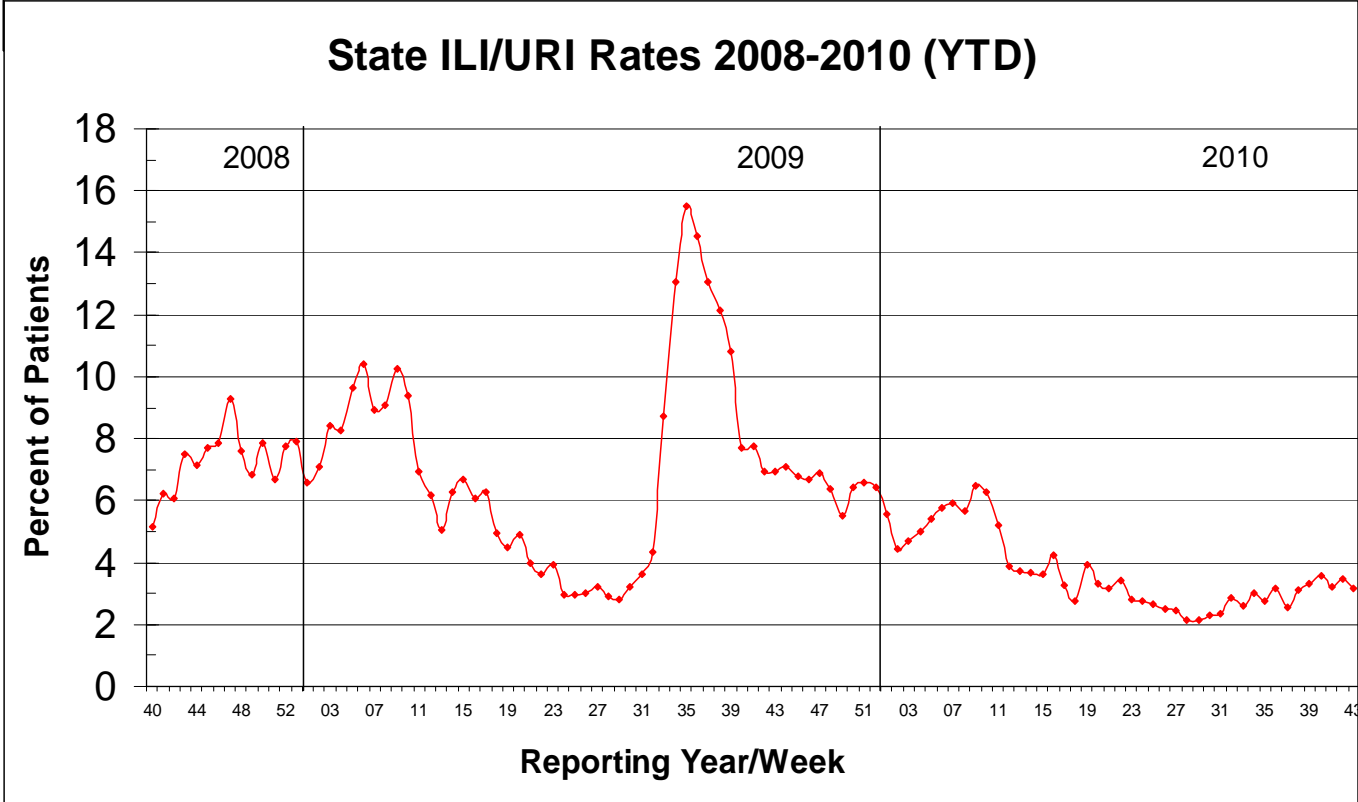
The 2010-11 state ILI rate was below baseline for week 43 and has been below baseline for the past six months.



During week 43, two districts (3 and 8) had an increase in ILI activity; three districts (2, 6 and 9) had a decrease, while the remaining districts (1, 4, 5, and 7) remained about the same.

Since September, there have been **seven** respiratory samples that were positive by influenza PCR testing. Three were positive for influenza A (H3), one of which had a documented travel history to Florida prior to the onset of symptoms, and represented an imported case. The other four confirmed influenza cases were Flu B. The cases were identified from the following counties: Attala, Holmes, Jasper, Lamar, Oktibbeha, and Perry.

State ILI Surveillance Year-To-Date



National ILI Surveillance

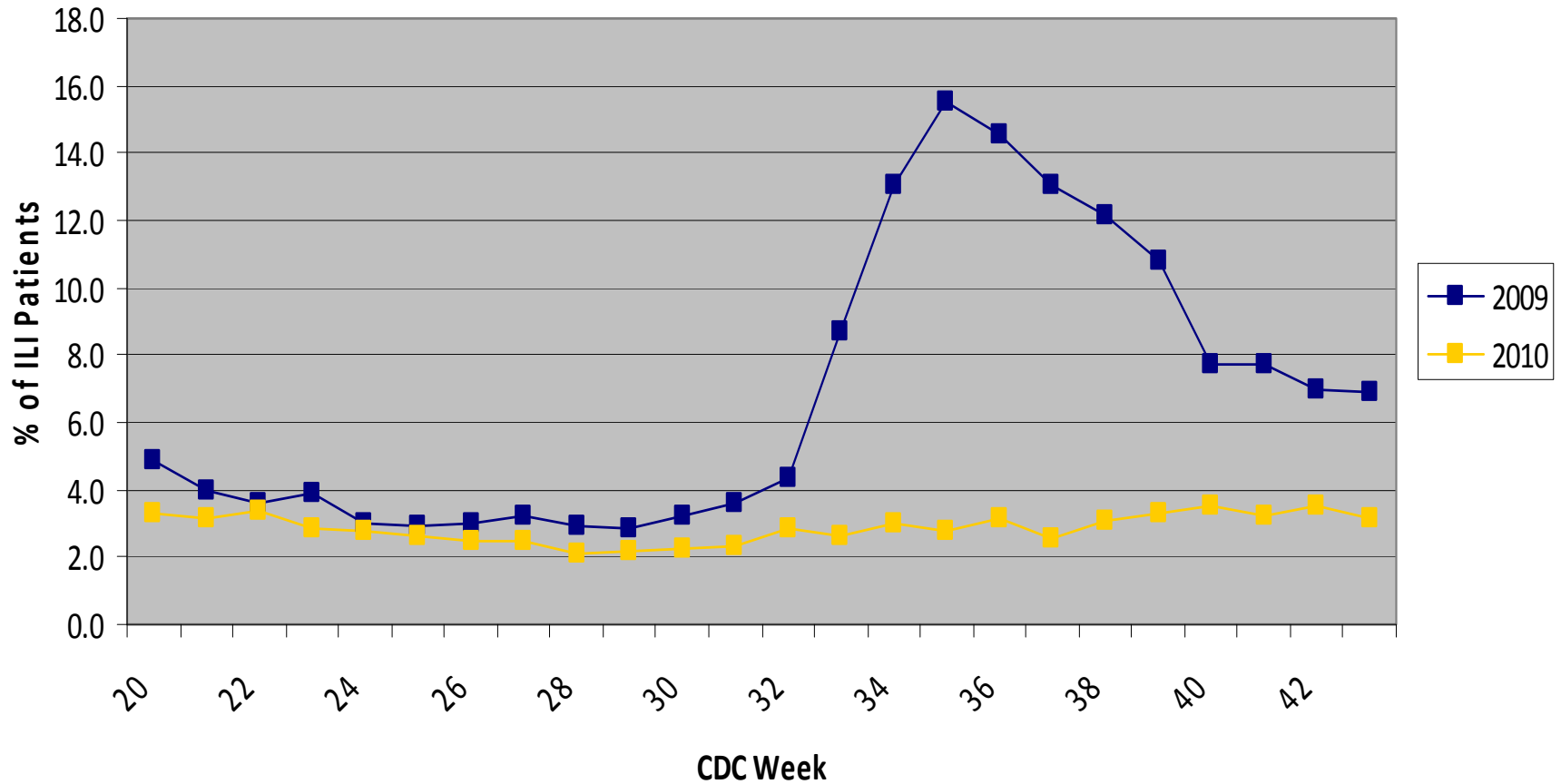
Week 43 not currently available

For more information on flu activity nationwide, please refer to the CDC's website:
<http://www.cdc.gov/flu/weekly/fluactivity.htm>

Page intentionally blank

Appendix

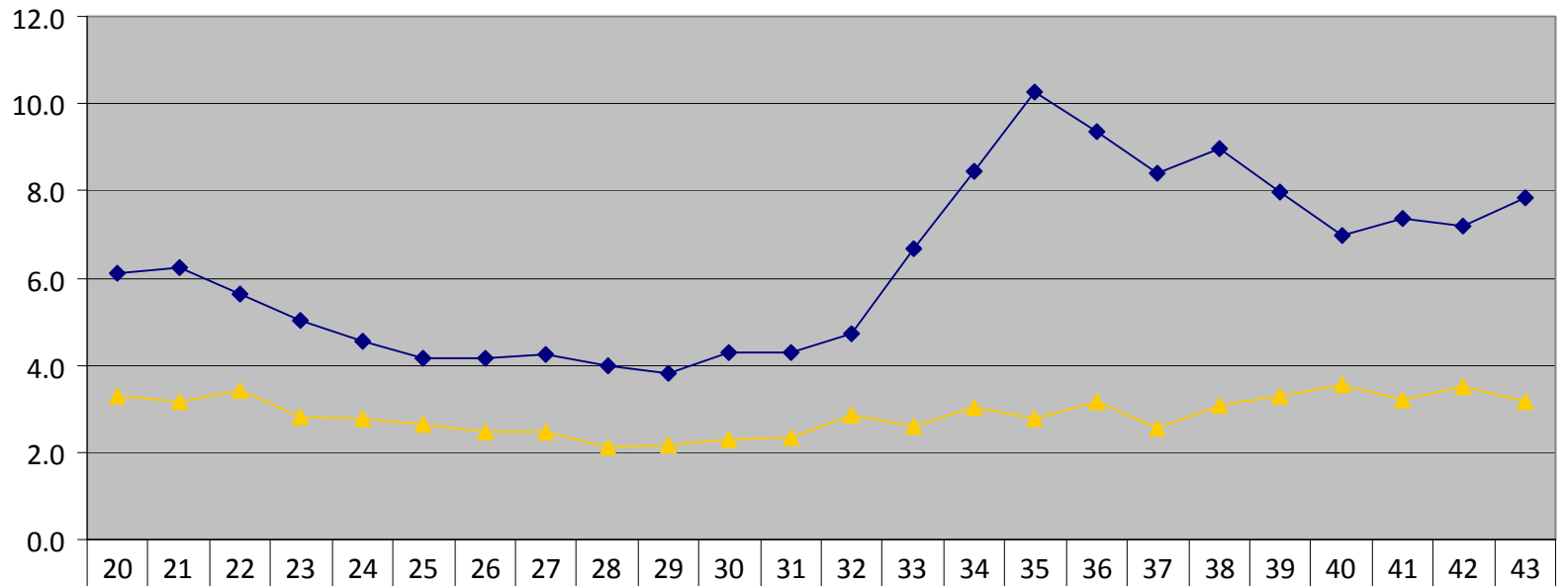
Statewide ILI Data, Week 43 ending October 30, 2010 Current Season compared to Previous Season



*There was not a week 53 for the 2009-2010 season. The value is an average of week 52, 2009 and week 01, 2010.

Comparison of 3-Year Average and 2010-2011 ILI Rates Statewide

Percent of Non-Trauma Patients presenting with
URI/Flu-like Symptoms



	20	21	22	23	24	25	26	27	28	29	30	31	32	33	34	35	36	37	38	39	40	41	42	43
◆ 3-Year Avg.	6.1	6.2	5.7	5.0	4.5	4.2	4.1	4.2	4.0	3.8	4.3	4.3	4.7	6.7	8.5	10.3	9.4	8.4	9.0	8.0	7.0	7.4	7.2	7.8
▲ 2010-2011	3.3	3.2	3.4	2.8	2.8	2.6	2.5	2.5	2.1	2.2	2.3	2.4	2.8	2.6	3.0	2.8	3.2	2.6	3.1	3.3	3.6	3.2	3.5	3.2

CDC Week

*There was not a week 53 for the 2009-2010 season. The value is an average of week 52, 2009 and week 01, 2010.

State ILI/URI Rates 2008-2010 (YTD)

