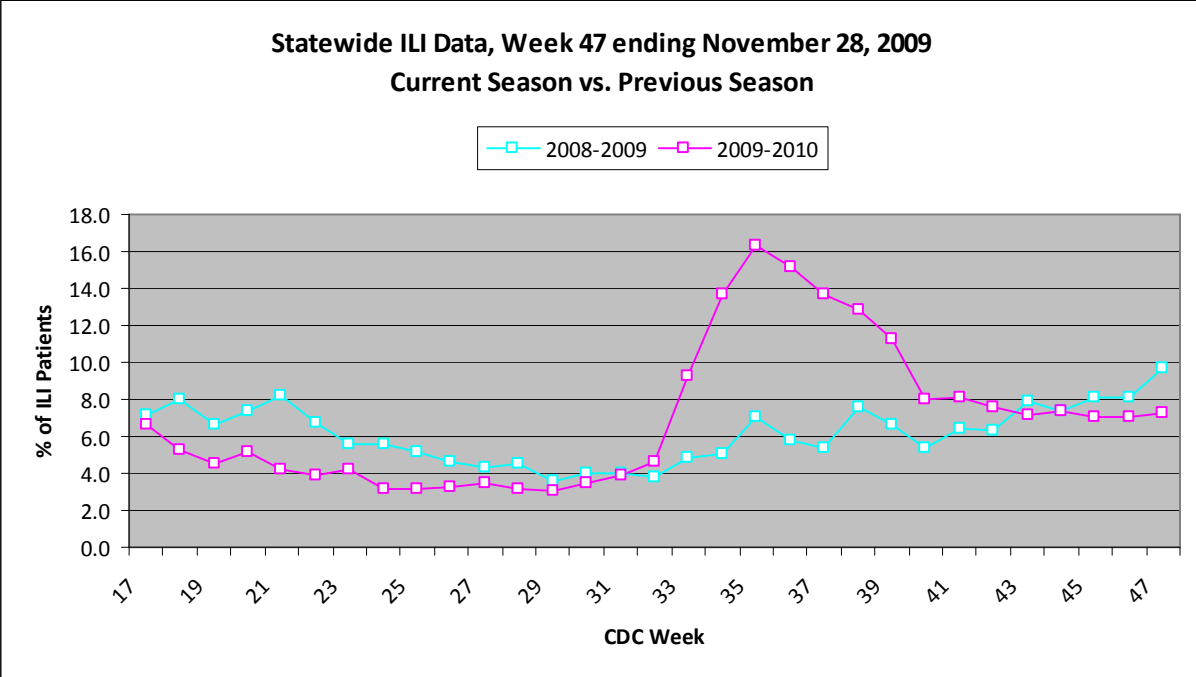
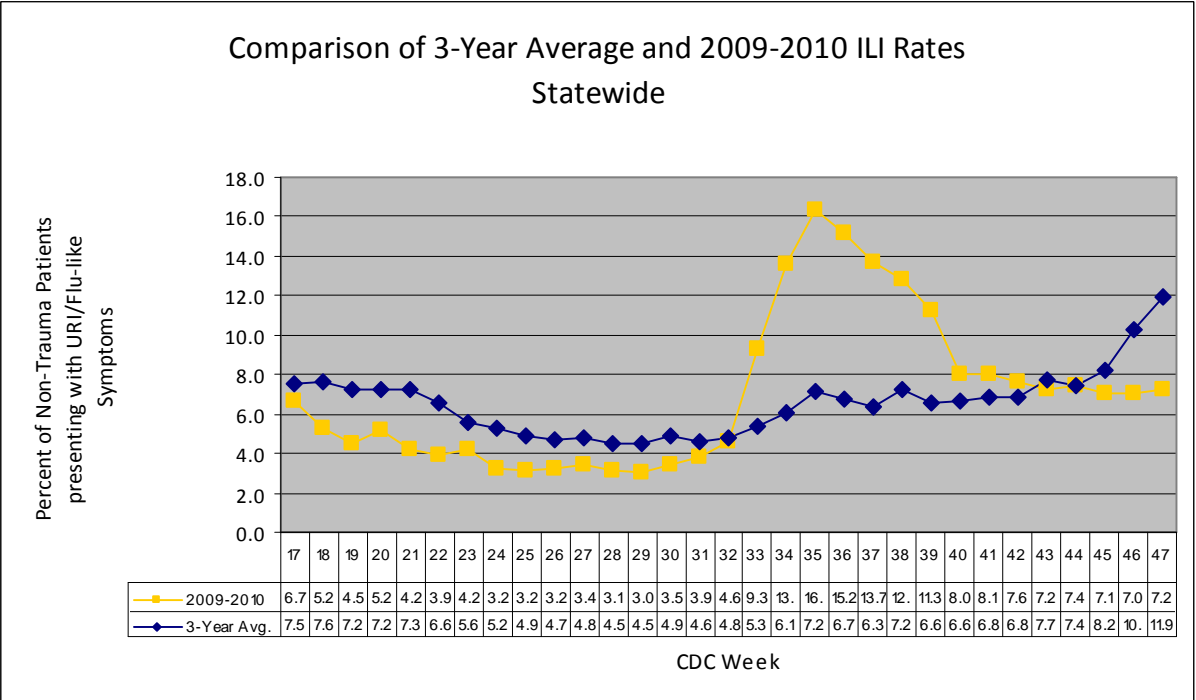


For week 47 (11/22/09- 11/28/09), the overall state ILI rate (7.2%) was comparable to last week (7.0%), but was lower than this time last year (9.7%).



New for the 2009-10 flu season is a comparison of 2009-10 ILI rates to the three-year average for each district and the state. The 2009-10 state ILI rate was below baseline for week 47.



During week 47, three districts (2, 8, and 9) had a decrease in ILI activity, one district (1) had an increase, and four remained about the same (4, 5, 6, and 7).

To date, 2,708 flu specimens have been submitted for testing to the MSDH PHL since April 27<sup>th</sup>. 1,274 lab-confirmed novel H1N1 specimens have been reported to MSDH. This total includes 319 positives reported from outside labs. There have been a total of 21 reported flu deaths, 13 that were confirmed H1N1. The positive cases and deaths were from the following counties:

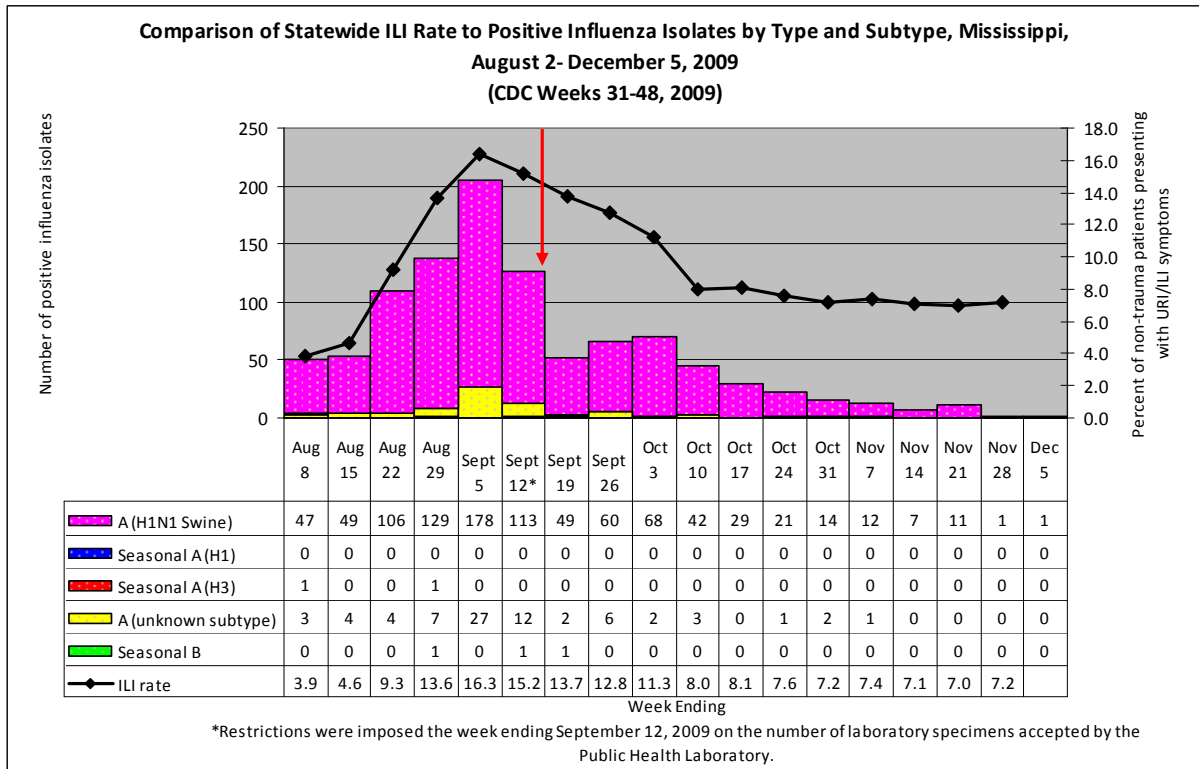
County	H1N1 Swine	All Flu Deaths	H1N1 Death	Other Flu Deaths
<b>Total</b>	<b>1,274</b>	<b>21</b>	<b>13</b>	<b>8</b>
Adams	7	0	0	0
Alcorn	7	1	0	1
Amite	0	0	0	0
Attala	6	0	0	0
Benton	1	0	0	0
Bolivar	13	0	0	0
Calhoun	16	0	0	0
Carroll	3	0	0	0
Chickasaw	12	0	0	0
Choctaw	6	0	0	0
Claiborne	1	0	0	0
Clarke	22	0	0	0
Clay	5	0	0	0
Coahoma	75	0	0	0
Copiah	8	0	0	0
Covington	10	1	1	0
DeSoto	69	0	0	0
Forrest	22	0	0	0
Franklin	3	0	0	0
George	6	0	0	0
Greene	4	0	0	0
Grenada	32	0	0	0
Hancock	16	2	2	0
Harrison	101	0	0	0
Hinds	62	1	0	1
Holmes	14	0	0	0
Humphreys	2	0	0	0
Issaquena	0	0	0	0
Itawamba	0	0	0	0
Jackson	94	2	1	1
Jasper	10	0	0	0
Jefferson	1	0	0	0

Jefferson Davis	2	0	0	0
Jones	17	4	3	1
Kemper	6	0	0	0
Lafayette	13	0	0	0
Lamar	22	0	0	0
Lauderdale	19	0	0	0
Lawrence	4	0	0	0
Leake	19	0	0	0
Lee	8	0	0	0
Leflore	7	0	0	0
Lincoln	11	0	0	0
Lowndes	12	0	0	0
Madison	46	0	0	0
Marion	51	1	1	0
Marshall	14	0	0	0
Monroe	17	0	0	0
Montgomery	8	0	0	0
Neshoba	17	0	0	0
Newton	6	0	0	0
Noxubee	3	0	0	0
Oktibbeha	24	0	0	0
Panola	34	0	0	0
Pearl River	9	1	0	1
Perry	2	0	0	0
Pike	12	1	1	0
Pontotoc	2	0	0	0
Prentiss	2	0	0	0
Quitman	11	0	0	0
Rankin	46	0	0	0
Scott	17	0	0	0
Sharkey	0	0	0	0
Simpson	2	1	0	1
Smith	5	0	0	0
Stone	4	1	1	0
Sunflower	4	0	0	0
Tallahatchie	3	0	0	0
Tate	27	1	0	1
Tippah	1	1	1	0
Tishomingo	2	0	0	0
Tunica	14	0	0	0
Union	4	0	0	0
Walthall	17	0	0	0
Warren	8	0	0	0
Washington	11	2	1	1

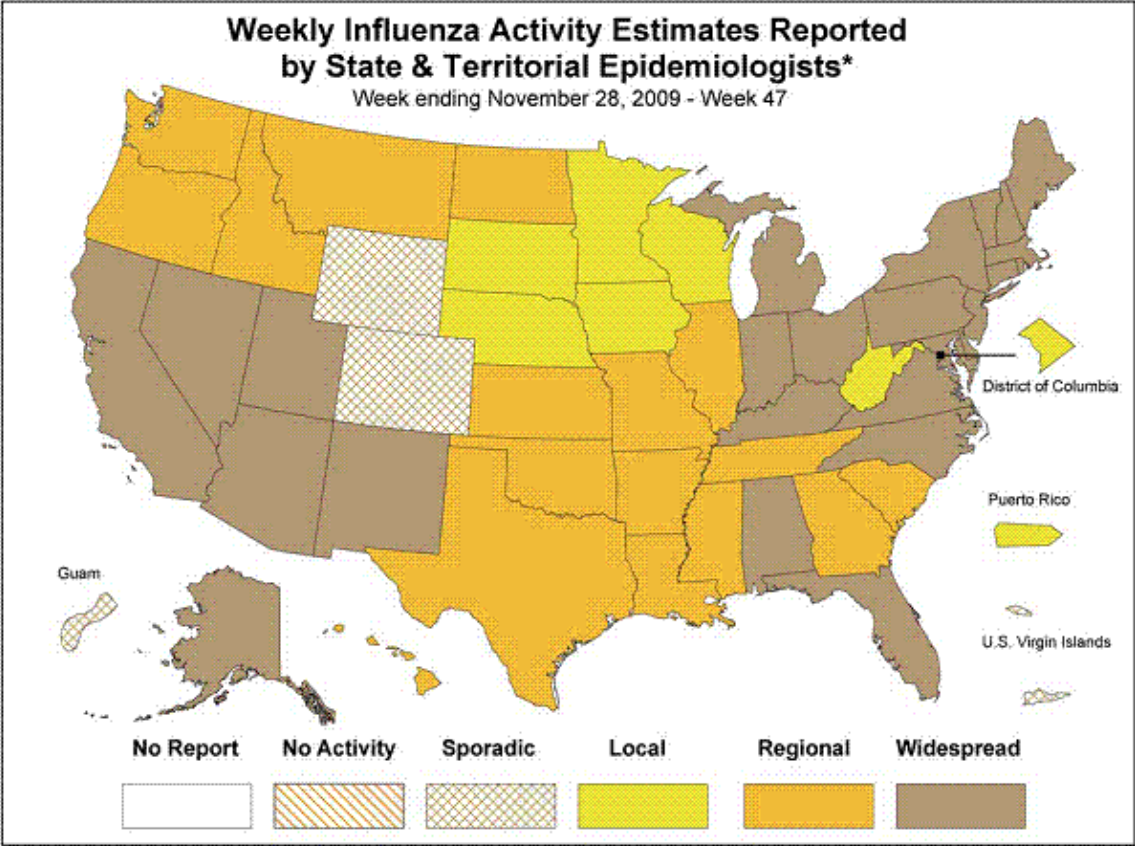
Wayne	3	0	0	0
Webster	10	1	1	0
Wilkinson	1	0	0	0
Winston	40	0	0	0
Yalobusha	9	0	0	0
Yazoo	15	0	0	0
Unknown	5	0	0	0

\*Other flu types include any flu case not confirmed as H1N1 swine flu.

Below is a comparison of the state ILI rate to the number of positive influenza isolates since August 2<sup>nd</sup>. The predominant flu type identified continues to be novel H1N1 (swine) flu.



Mississippi reported “**regional**” (Outbreaks of influenza or increases in ILI and recent laboratory confirmed influenza in at least two but less than half the regions of the state with recent laboratory evidence of influenza in those regions) activity for week 47. For more information on flu activity nationwide, please refer to the CDC’s website at: <http://www.cdc.gov/flu/weekly/fluactivity.htm>.



\* This map indicates geographic spread & does not measure the severity of influenza activity