

MISSISSIPPI STATE DEPARTMENT OF HEALTH

Annual Report

2008

TABLE OF CONTENTS

Administrative.....	1-9
Mississippi State Board of Health Members	3
MSDH Organizational Chart.....	4
Public Health Districts.....	5
MSDH Administrative Staff.....	6
Changes in Regulations.....	7
Changes in State Law	9
Public Health Indicators.....	11-20
Infant Mortality.....	13
AIDS	14
Tuberculosis	15
West Nile Virus.....	16
Immunizations.....	17
Vital Statistics	18
Website Activity	20
MSDH Program Activities and Statistics.....	21-25
Expenditures Fiscal Year 2008	27-32
Travel and Vehicle Report.....	33-35

Administrative

2008

MISSISSIPPI STATE BOARD OF HEALTH

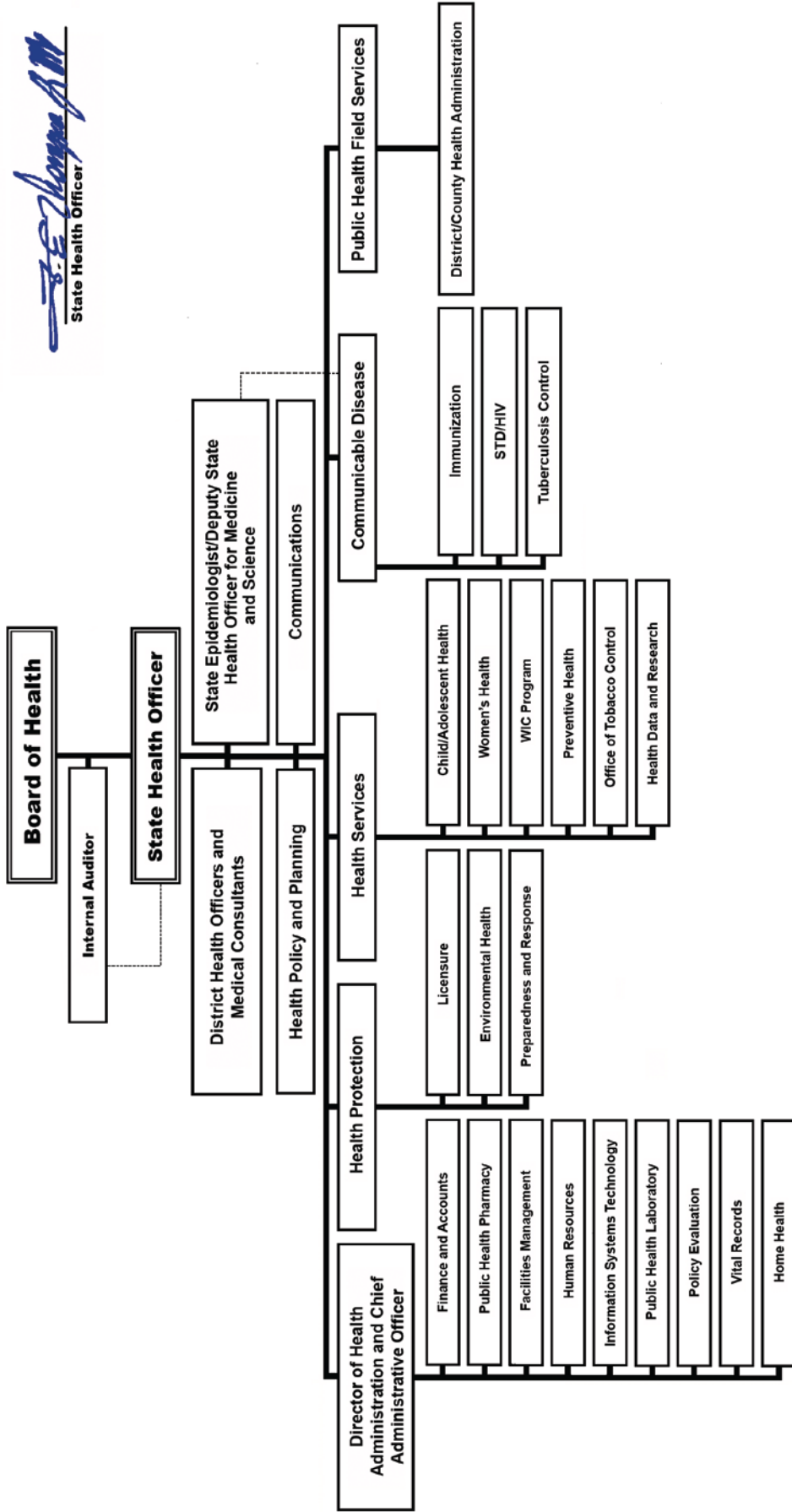
NAME	TERM EXPIRES
Elayne H. Anthony, PhD Madison, MS	June 30, 2013
Albert Randel "Randy" Hendrix, Sr., PhD Ovett, MS	June 30, 2013
J. Edward Hill, MD, FAAFP Tupelo, MS	June 30, 2009
Lucius "Luke" M. Lampton, MD, FAAFP Magnolia, MS	June 30, 2013
Alfred "Al" E. McNair, Jr., MD Ocean Springs, MS	June 30, 2009
Carl L. Nicholson, Jr., CPA Hattiesburg, MS	June 30, 2011
Sammie Ruth Rea, RN Brandon, MS	June 30, 2009
Ronald "Ronnie" W. Robertson, Sr. Greenwood, MS	June 30, 2011
Kelly S. Segars, Sr., MD, FAAFP, ABFP Iuka, MS	June 30, 2009
David C. Williams, MD Clinton, MS	June 30, 2011
Ellen P. Williams, RN, MSN Senatobia, MS	June 30, 2013



Mississippi State Department of Health Functional Organizational Chart

Agency: 0301
FY-2009
October 8, 2008

[Signature]
State Health Officer



PUBLIC HEALTH DISTRICTS

Northwest Public Health

District I

Alfio Rausa, MD
662-563-5603

Northeast Public Health

District II

Robert Trotter, MD
662-841-9015

Delta/Hills Public Health

District III

Alfio Rausa, MD
662-453-4563

Tombigbee Public Health

District IV

Robert Trotter, MD
662-323-7313

West Central Public Health

District V

Mary Gayle Armstrong, MD
601-978-7864

East Central Public Health

District VI

Rebecca James, MD
601-482-3171

Southwest Public Health

District VII

Clay Hammack, MD
601-684-9411

Southeast Public Health

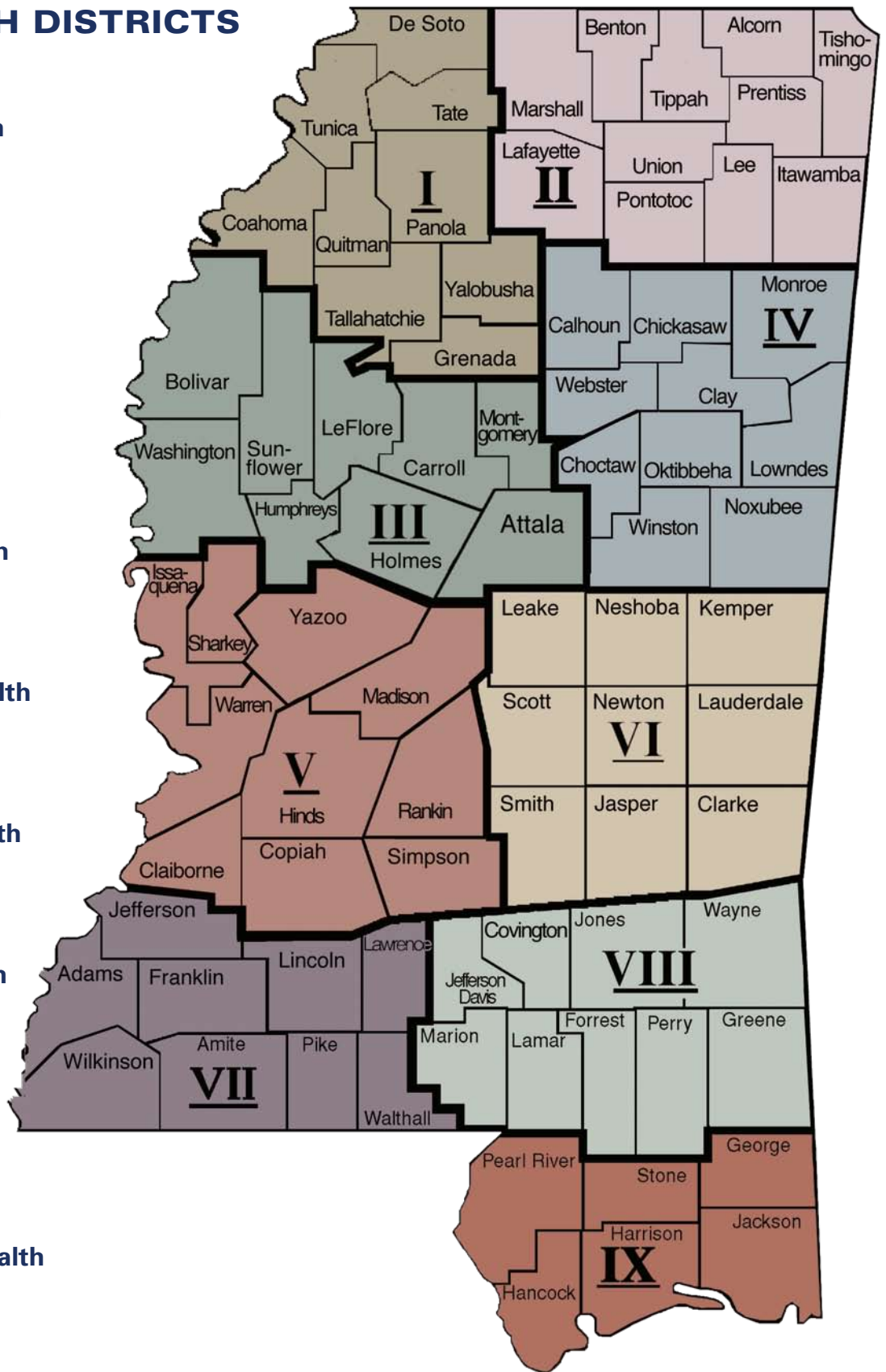
District VIII

Clay Hammack, MD
601-544-6766

Coastal Plains Public Health

District IX

Robert Travnicek, MD
228-831-5151



MSDH ADMINISTRATION

State Health Officer	Ed Thompson, M.D., M.P.H.	(601) 576-7634
State Epidemiologist	Dr. Mary Currier	(601) 576-7725
Communicable Disease	Joy Sennett	(601) 576-8012
Immunization	Regina Irvin	(601) 576-7751
Tuberculosis	Mike Holcombe	(601) 576-7700
STD/HIV	Craig Thompson	(601) 576-7723
Communications	Liz Sharlot	(601) 576-7667
Health Policy and Planning	Don Eicher	(601) 576-7874
Legal Counsel	Rick Moore	(601) 576-7458
Internal Audit	Sharon Smiley	(601) 576-7458
Medical and Dental Officers		
Health Disparity Elimination	Dr. Lovetta Brown	(601) 576-8102
State Dental Director	Dr. Nicholas Mosca	(601) 576-7500
District Health Officers		
District I & III	Dr. Alfio Rausa	(662) 453-4563
District II & IV	Dr. Robert Trotter	(662) 841-9015
District V	Dr. Mary Gayle Armstrong	(601) 978-7864
District VI	Dr. Rebecca James	(601) 482-3171
District VII & VIII	Dr. Clay Hammack	(601) 544-6766
District IX	Dr. Robert Travnicek	(228) 831-5151
Health Protection	Jim Craig, Director	(601) 576-7680
Emergency Planning & Response	Art Sharpe	(601) 576-7680
Emergency Medical Services/ Trauma Services	Alisa Williams	(601) 576-7380
Environmental Services	Tim Darnell	(601) 576-7690
Licensure	Vickey Maddox	(601) 364-1100
Health Services	Daniel R. Bender, Director	(601) 576-7472
Women's Health	Louisa Denson	(601) 576-7856
Child & Adolescent Health	Geneva Cannon	(601) 576-7464
WIC	Kathy Burk	(601) 987-4680
Preventive Health	Victor Sutton	(601) 576-7781
Oral Health	Dr. Nicholas Mosca	(601) 576-7500
Office of Tobacco Control	Roy Hart	(601) 364-5790
Health Data & Research	Lei Zhang	(601) 576-8165
Health Administration	Mike Lucius, Director	(601) 576-7635
Finance & Accounts	Vacant	(601) 576-7542
Facilities & Property Management	Vacant	(601) 576-7635
Human Resources	Ron Davis	(601) 576-7642
Information Technology	Vacant	(601) 576-8092
Public Health Pharmacy	Dr. Charles Ray Nix	(601) 713-3457
Public Health Laboratory		
Director (Interim)	Dr. Patrick Kyle	(601) 576-7582
Policy Evaluation	Kathy Moon	(601) 576-7428
Vital Records	Judy Moulder	(601) 576-7961
District Health Administrators		
District I	Diane W. Hargrove	(662) 563-5603
District II	Roger Riley	(662) 841-9015
District III	Diane W. Hargrove	(662) 453-4563
District IV	Karen McPherson	(662) 323-7313
District V	Kevin Pearson	(601) 978-7864
District VI	Kathy Posey	(601) 482-3171
District VII	Tracy Byas	(601) 684-9411
District VIII	David Caulfield	(601) 544-6766
District IX	Kathy Beam	(228) 831-5151

CHANGES IN REGULATIONS

The regulatory actions taken by the State Board of Health in FY 2008 are as follows:

July 2, 2007

Adopted changes to the Minimum Standards of Operation for Ambulatory Surgical Facilities.

This change added criteria to require at least one physician member performing abortion procedures to have admission privileges in at least one local hospital.

August 8, 2007

Adopted revisions to the Certificate of Need Review Manual.

These changes require filing Notice of Intent to Apply for Certificate of Need (CON) at least thirty days prior to the Application for a CON and reflect statutory changes in certificate of need program.

Adopted revisions to the MS J-1 Visa Waiver Guidelines for National Interest Waiver Letters.

Adopted recommendations of the MS Qualified Health Center Advisory Council for FY 2008 Grant Awards to MS Qualified Health Centers.

Adopted revisions to the Minimum Standards for Personal Care Home – Assisted Living.

These changes added patient pharmacy choice.

Adopted revisions to the Minimum Standards for Personal Care Home – Residential Living.

These changes added patient pharmacy choice.

Adopted revisions to the Minimum Standards for Institutions for the Aged or Infirm.

These changes added patient pharmacy choice.

Adopted revisions to the Minimum Standards of Abortion Facilities.

These changes add requirements of specific procedures that must be performed prior to the performance of an abortion.

Deletion of regulations governing operation of Health Maintenance Organizations.

Deleted regulations of Health Maintenance Organizations by MSDH because state law vests regulatory authority with Mississippi Department of Insurance.

Adopted revisions to the Minimum Standards of Operation for Psychiatric Residential Treatment Centers.

These changes added licensed Professional Art Therapists to the list of professional staff authorized to provide services to clients and to the list of ancillary service providers.

Adopted revisions to the Regulations Governing the Certification of Municipal and Domestic Water System Operators.

These changes clarified initial certification and recertification of operators.

Adopted revisions to the Water Quality Analysis Fee Schedule for Public Water Suppliers for FY 2008.

Adopted revisions to the Rules and Regulations Governing Reportable Disease.

These changes clarified regulations regarding duty to report and tuberculin skin test.

Adopted revisions to the Rules Governing Registration and Certification of Vital Records.

These changes clarified registration, certification and amendments of birth and death records and adopted a new fee schedule.

Adopted revisions to the Food Protection Regulations.

These changes added a scoring system for food service facility inspections.

Adopted revisions to the Emergency Medical Services Rules and Regulations.

These changes adjusted fees for EMS providers.

October 17, 2007

Adopted the Minimum Standards for Adult Foster Care Facilities.

This new regulation was adopted to govern Adult Foster Care Facilities.

Adopted revisions to the Reportable Disease for the Cancer Registry.

Adopted revisions to the Minimum Standards for Operation for Hospice.

January 23, 2008

Adopted revisions to the Certificate of Need (CON) Review Manual.

These changes clarified the process of obtaining a six month extension of a CON.

Adopted revisions to the Minimum Standards for Institutions for the Aged or Infirm.

These changes mandated content of an all hazards emergency preparedness and response plan.

Adopted revisions to the Minimum Standards for Personal Care Homes – Assisted Living.

These changes mandated content of an all hazards emergency preparedness and response plan.

Adopted revisions to the Minimum Standards for Personal Care Homes – Residential Living.

These changes mandated content of an all hazards emergency preparedness and response plan.

Adopted revisions to the Minimum Standards for Adult Foster Care Facilities.

These changes mandated content of an all hazards emergency preparedness and response plan.

Adopted revisions to the Minimum Standards of Operation for Home Health Agencies.

These changes mandated content of an all hazards emergency preparedness and response plan.

Adopted revisions to the Minimum Standards for Operation for Mississippi Hospitals.

These changes mandated content of an all hazards emergency preparedness and response plan.

Adopted revisions to the Minimum Standards of Operation for Hospice.

These changes mandated content of an all hazards emergency preparedness and response plan.

Adopted revisions to the Mississippi EMS: The Law, Rules and Regulations.

These changes changed performance standards for Emergency Medical Technicians and clarified the eligible uses of the Emergency Medical Services Operating Fund with regard to escrow of funds.

April 9, 2008

Adopted revisions to the Mississippi Primary Drinking Water Regulations.

These changes were required to comply with Environmental Protection Agency requirements provided by Long Term 1 Enhanced Surface Water Treatment Rule.

Adopted revisions to the Rules and Regulations Governing Reportable Diseases.

Changes were made to various classes of reportable disease reporting.

Adopted revisions to the Regulation Governing Individual On-Site Wastewater Disposal: Chapter 6 – Design Standard IV (Subsurface Drip Disposal) and Chapter 12 – Design Standard X (Overland Discharge).

These changes made revisions to the design standards for subsurface drip disposal and overland discharge.

Adopted revisions to the Mississippi EMS: The Law, Rules and Regulations.

These changes require that the owner, manager, or medical director of a publicly or privately owned ambulance service give no less than 30 days notice to MSDH before ceasing operations.

CHANGES IN STATE LAW

HB 1405 – An Act improving The Mississippi Trauma Care System

House Bill 1405 creates a solution for consistent, ongoing participation and funding for The Mississippi Trauma System. HB 1405 establishes the “Pay or Play” system, effective September 1, 2008. If a facility chooses not to participate at their capable level, then they will be required to pay into the Trauma System Fund. If a facility chooses to participate, then they will be eligible for reimbursements for uncompensated trauma care from the fund. HB 1405 also allows any level I hospital from a contiguous state that participates in Mississippi’s Trauma System to be reimbursed for uncompensated trauma care of Mississippi residents. In addition, HB 1405 approves increases in certain traffic fees and fines to help fund the trauma system. The legislation went into effect on July 1, 2008 and stands repealed on July 1, 2011.

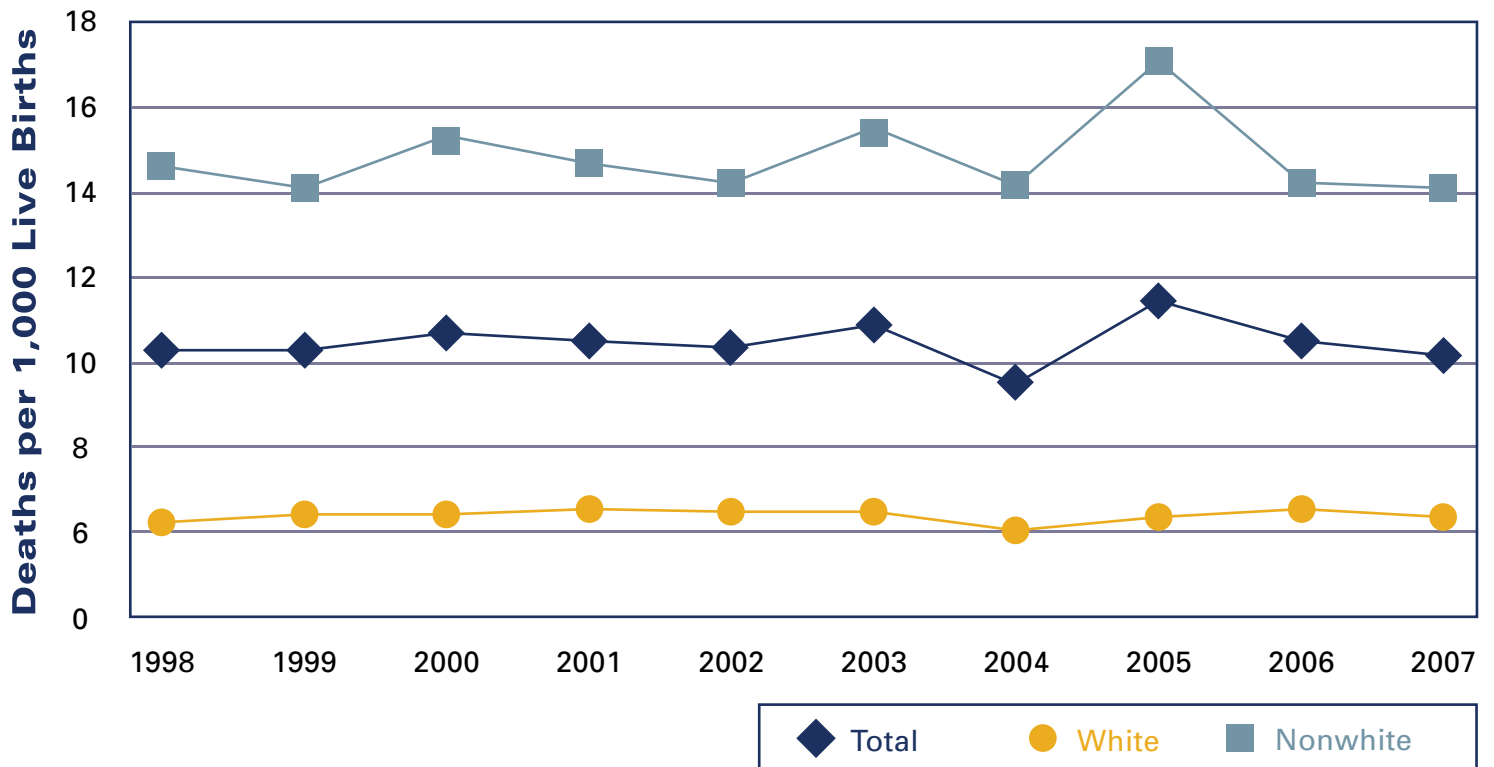
HB 892 – An Act improving The Mississippi Individual On-Site Wastewater Disposal System Law & SB 2459 to extend the law until the effective date of HB 892

House Bill 892 strengthens the laws governing the use of individual human-waste disposal systems where community sewage systems are not available. The legislation adds three new provisions to the current onsite wastewater law; it requires statewide final approval of systems installed; it requires the property owner to have a maintenance contract or receive maintenance training for certain disposal systems; and it allows for Professional Site Evaluators. Professional Site Evaluators are licensed by the Health Department and are authorized to conduct soil/site evaluations, design systems and conduct final installation inspections. Additionally, their system designs would still require review and approval by the Health Department prior to installation. Because the current law was to expire July 1, 2008, it was necessary to have Senate Bill 2459 extend the current onsite wastewater law until the new laws created by HB 892 go into effect on July 1, 2009.

Public Health Indicators

2008

Infant Mortality in Mississippi, 1998–2007



Infant Mortality Rate Mississippi 2007

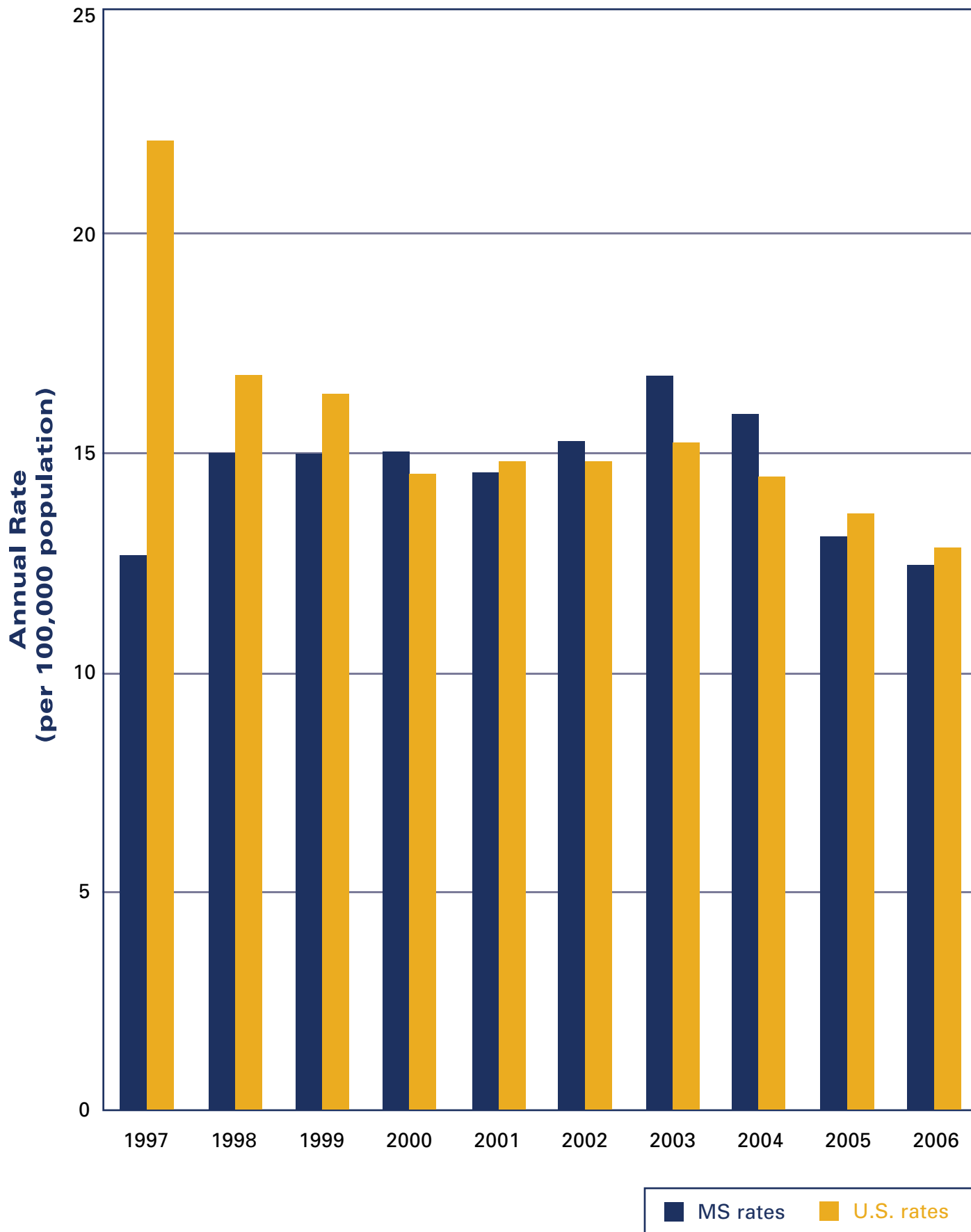
Total – 10.1

White – 6.6 (down)

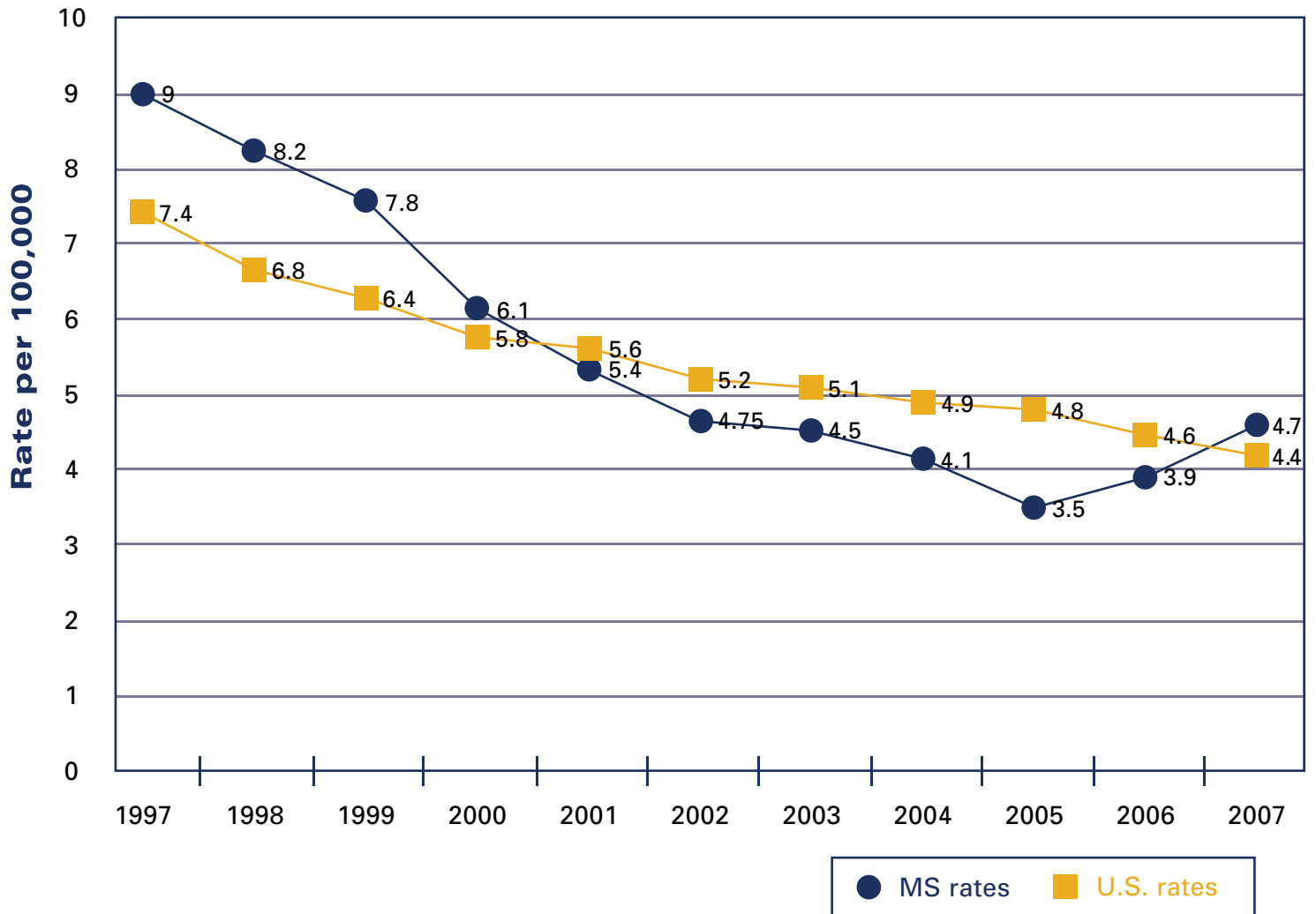
Nonwhite – 14.1 (down)

Source: Mississippi State Department of Health, Bureau of Vital Statistics

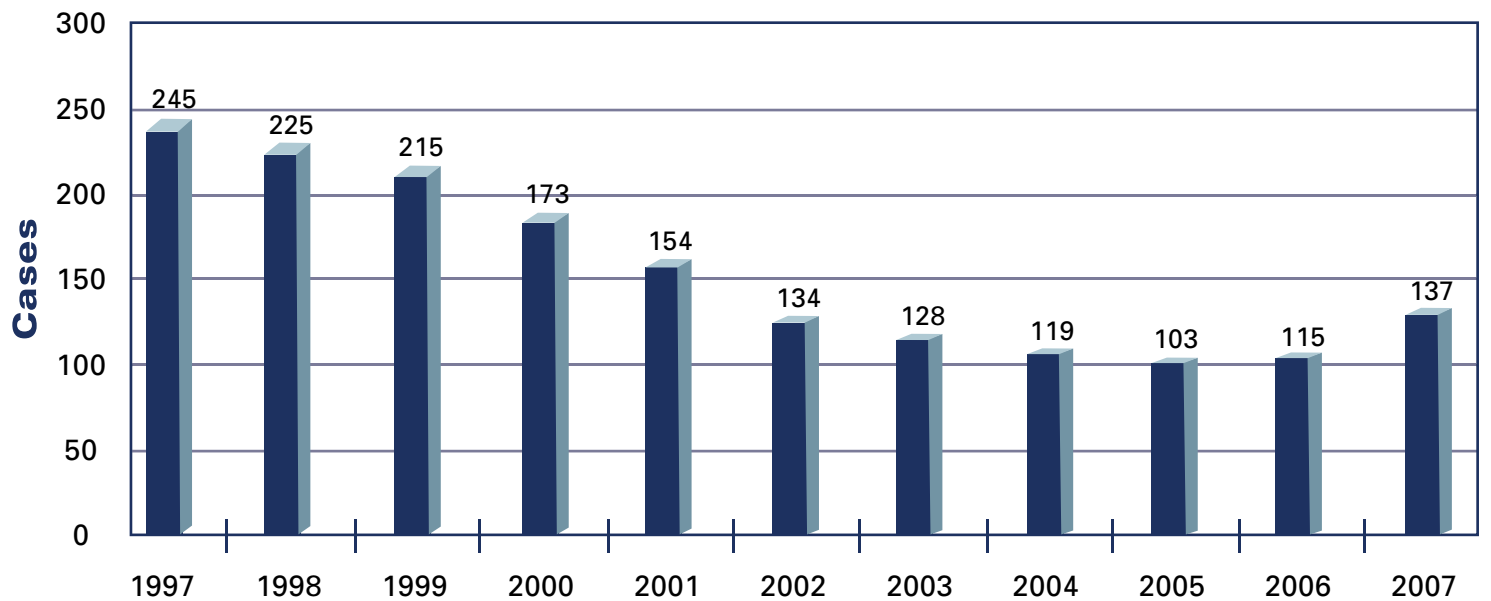
AIDS Annual Rates for the U.S. and Mississippi, 1997-2006



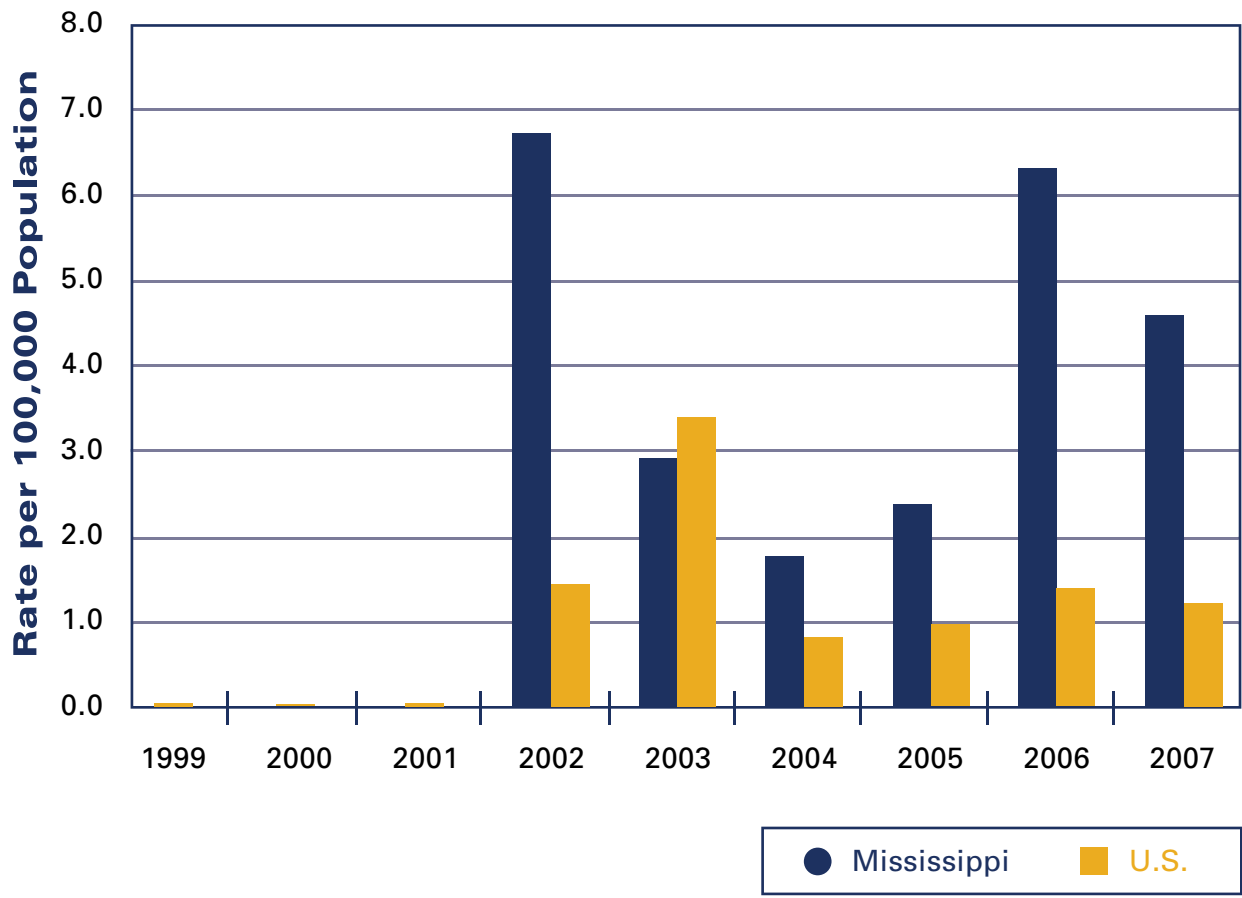
Tuberculosis Case Rates MS vs U.S. Case Rates, 1997-2007



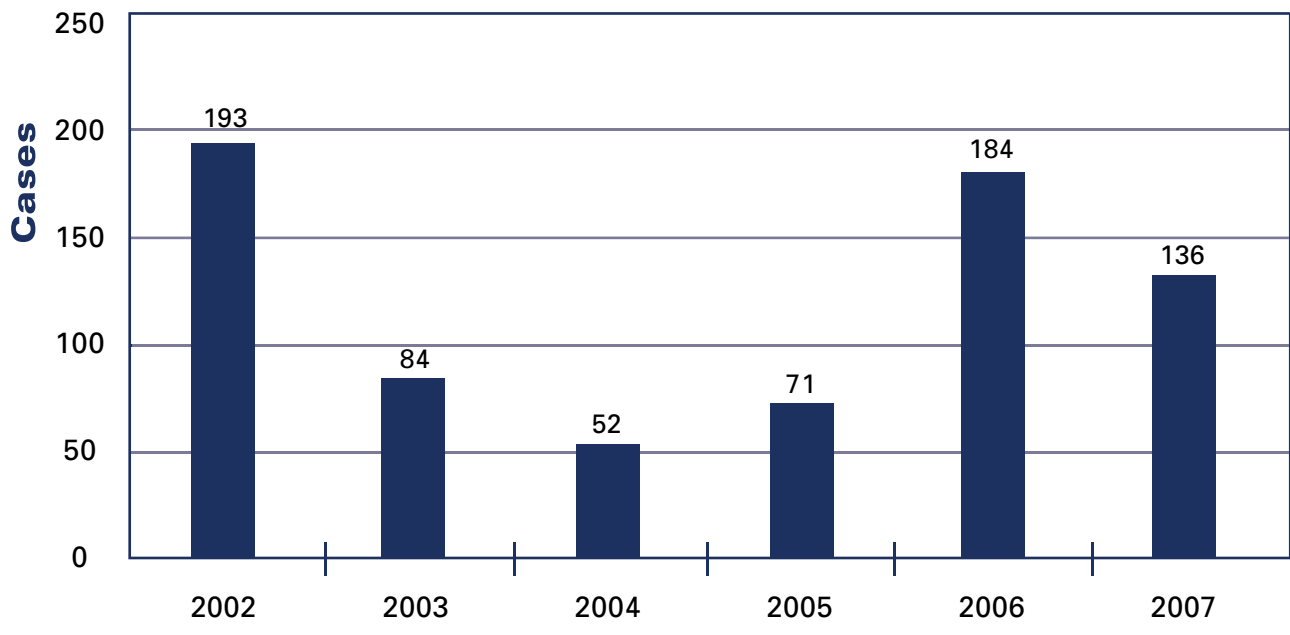
MS Reported TB Cases, 1997-2007



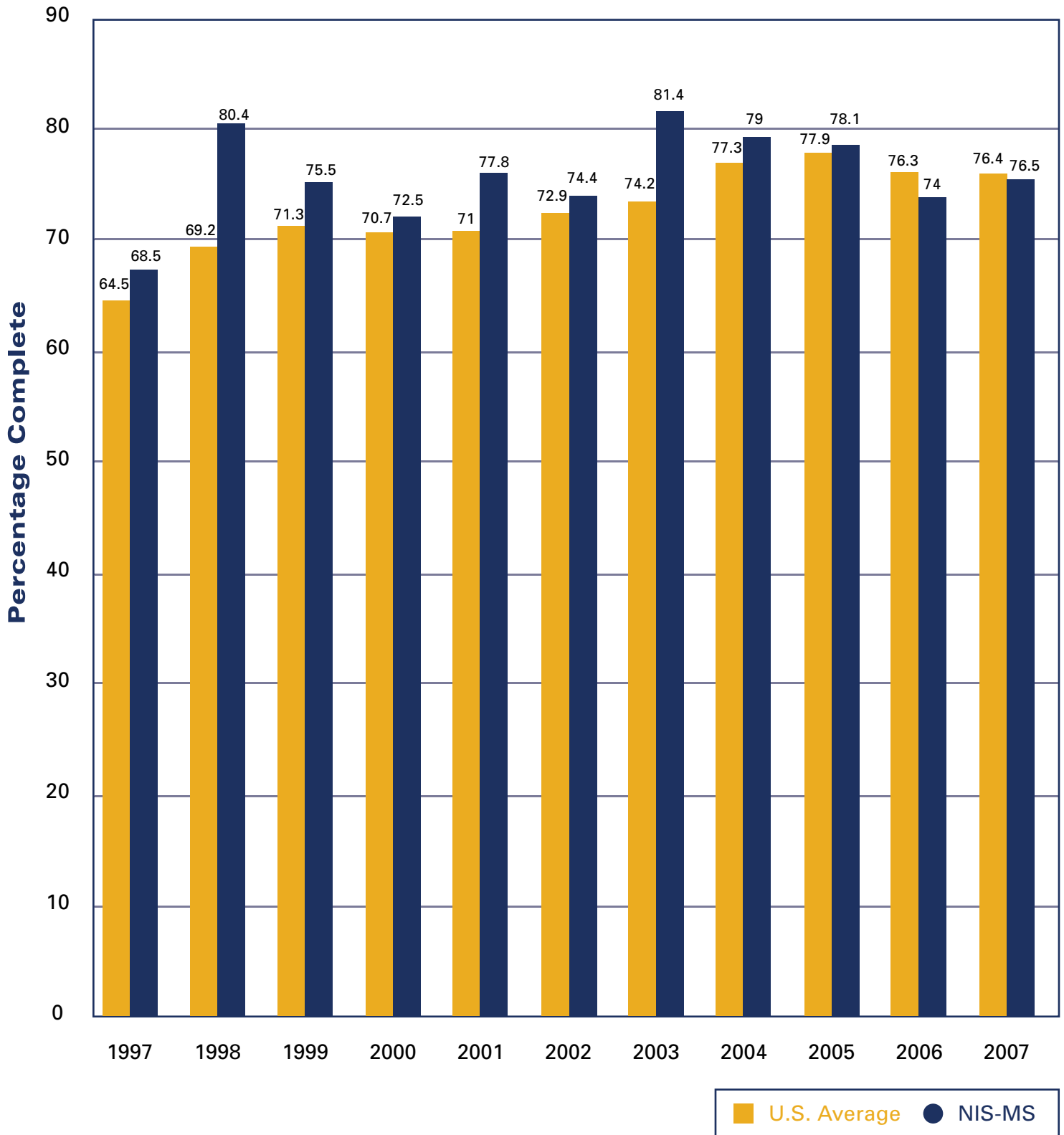
West Nile Virus Case Rates, United States and Mississippi, 1999-2007



West Nile Virus Cases, Mississippi, 2002-2007



Immunization Completion by 24 Months of Age 4:3:1:3:3*



*4:3:1:3:3 - 4 DTaP, 3 IPV, 1 MMR, 3 Hib, 3 HepB
Source: CDC National Immunization Survey (NIS)

Status of Selected Health Indicators for Mississippi, 1998-2007

Year	Infant Mortality Rate ¹	Cardiovascular Disease Mortality Rate ²	Teen Pregnancy Rate ³
1998	10.2	345.2	45.9
1999	10.2	336.2	45.2
2000	10.6	324.4	42.9
2001	10.5	315.1	38.9
2002	10.3	314.1	38.2
2003	10.7	300.6	36.3
2004	9.7	284.1	36.4
2005	11.4	293.9	35.5
2006	10.5	276.3	41.0
2007	10.1	274.8	43.0
U.S. Rate (year)	6.9 (2005)	220.0 (2005)	Not Available
MS Rank ⁴	50	49	

¹Infant deaths per 1,000 live births

²Deaths per 100,000 population

³Births+fetal deaths+abortions per 1,000 population 10-19

⁴Rank: 1=best/50=worst

Source: Mississippi State Department of Health, Bureau of Public Health Statistics

Status of Selected Prevalence Indicators for Mississippi, 1998-2007

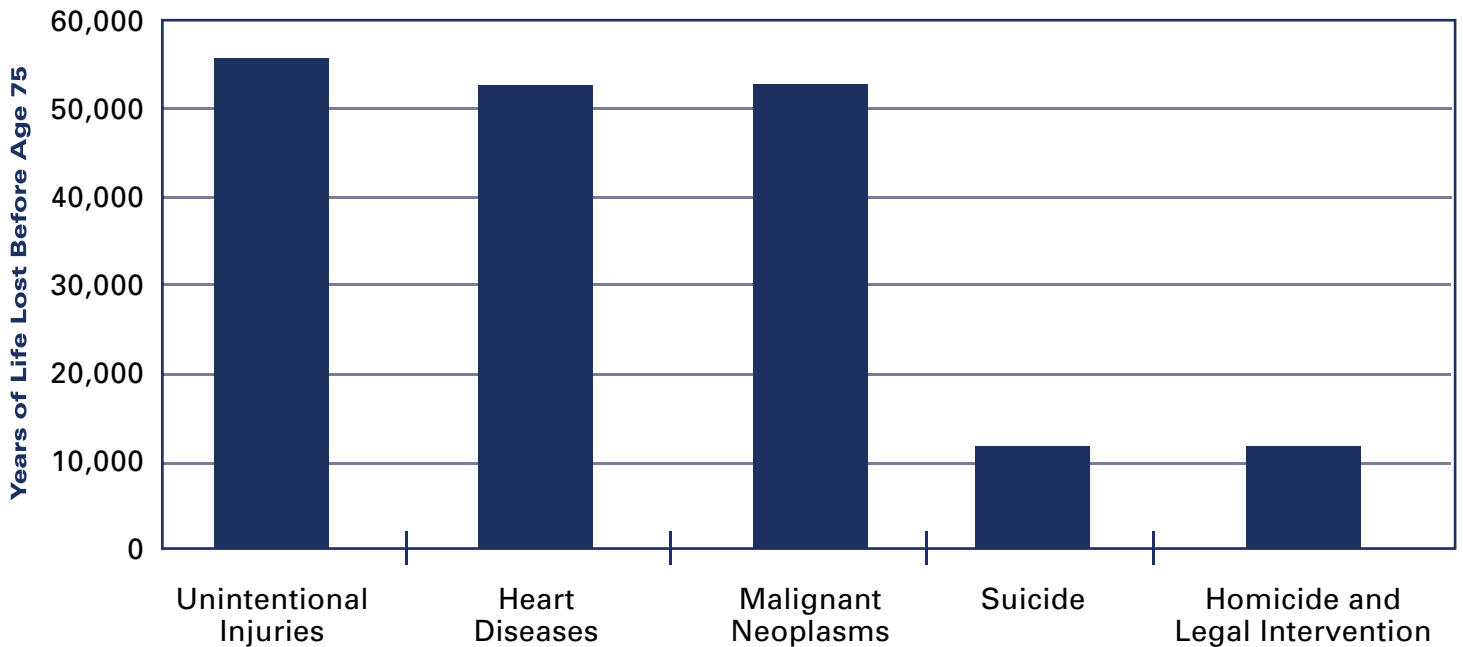
Year	Obesity Prevalence Rate ¹	Diabetes Prevalence Rate ¹	Current Smoking Prevalence Rate ¹
1998	22.9	7.7	24.2
1999	23.4	8.3	23.4
2000	25.0	7.6	23.5
2001	25.4	9.3	25.4
2002	26.8	8.6	27.4
2003	27.0	11.0	25.6
2004	29.5	9.6	24.6
2005	30.9	9.7	23.7
2006	31.5	10.9	25.1
2007	32.6	11.1	23.9
U.S. Rate (year)	26.3 (2007)	8.0 (2007)	19.8 (2007)
MS Rank ²	50	49	44

¹Percent

²Rank: 1=best/50=worst

Source: Mississippi State Department of Health, Bureau of Public Health Statistics
Behavioral Risk Factor Surveillance System

Leading Causes of Years of Potential Life Lost Before Age 75 Mississippi Residents, 2007



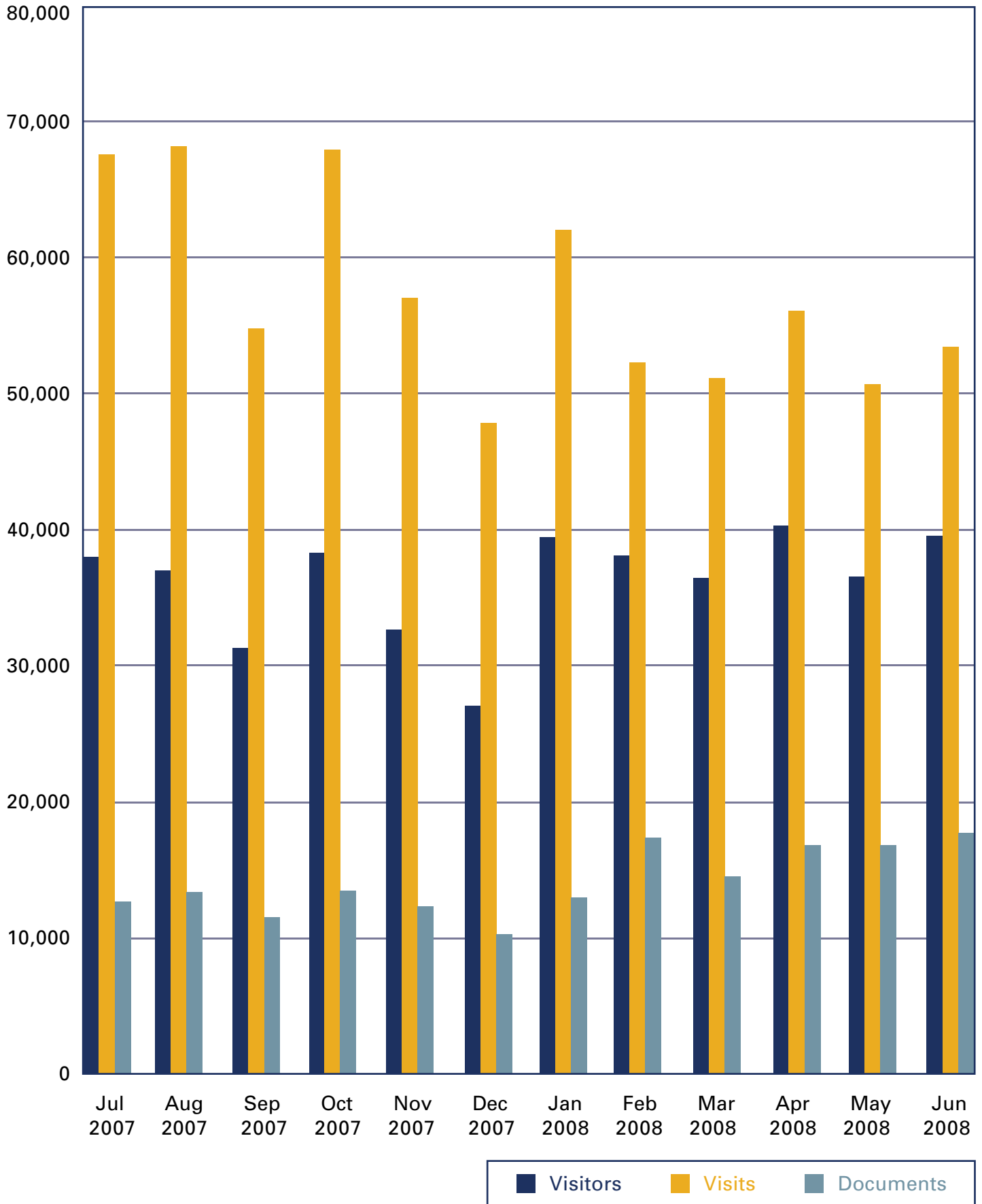
Source: Mississippi State Department of Health, Bureau of Public Health Statistics

Leading Causes of Years of Potential Life Lost Before Age 75 Mississippi Residents, 1998-2007

Year	Unintentional Injuries	Heart Diseases	Malignant Neoplasms	Suicide	Homicide and Legal Intervention
1998	51,060	54,138	50,111	10,687	14,112
1999	50,846	52,421	52,012	8,872	13,315
2000	50,565	51,909	50,532	9,482	13,322
2001	48,135	50,474	51,709	10,337	13,473
2002	49,985	53,160	52,180	11,166	12,124
2003	48,940	52,386	52,980	9,971	11,946
2004	51,173	51,654	53,248	10,728	11,515
2005	55,156	54,376	53,876	11,550	9,514
2006	56,122	51,681	54,377	9,278	12,328
2007	55,342	52,930	52,427	11,721	11,400

Source: Mississippi State Department of Health, Bureau of Public Health Statistics

MSDH Web Site Activity FY2008



Program Activities and Statistics

2008

MSDH Program Activities and Statistics

Clients, Facilities, Certificates and Inspections

Fiscal Year 2008 Report of Activities by Program

Community Health Services

Diabetes patients served	95
Diabetic monitoring visits	107
Hypertensive treatment visits	1,351
Immunization doses administered	501,945
HIV cases identified*	87

*HIV cases are for calendar year 2007

Personal Health Services

Child Health

Children (ages birth-21) encounters	50,084
Newborns screened for phenylketonuria, hypothyroidism, galactosemia, hemoglobinopathies, congenital adrenal hyperplasia, and other genetic disorders	46,647

Children's Medical Program

Specialty/Clinic sessions per year	243
Patients enrolled in program	3,052

Home Health

Patients served	753
Registered nurse visits	6,837
Other visits	41,052

WIC – Special Supplemental Nutrition Program for Women, Infants, and Children

(Average monthly participation)

Women	24,908
Infants	34,308
Children	46,950

Women's Health

Pregnant women served	7,802
High-risk mothers and infants served through Perinatal High Risk Management/ Infants Services System (PHRM)	29,223
Women screened for breast or cervical cancer (as of 6/24/09)	6,843
Women and men screened for osteoporosis (CY 2007)	1,604

Reproductive Health (Family Planning)

Adult patients served	42,029
Teens	18,125

Oral Health

Population added through water fluoridation program	98,365
Population on recruited systems (pending activation)	96,313
Second-grade children served through dental sealant program	474
Children in grades K-5 served through fluoride mouth rinse program	25,710

Preventive Health

Child safety car seats distributed and installed	1,500
Residential smoke detector alarms installed	1,615
Residents screened in health events	47,994

Tobacco Control

Calls to Tobacco Quitline	21,727
ACT tobacco/treatment programs (including Satellite Treatment Clinics)	12
Tobacco prevention projects in public health districts	58

Health Protection

Environmental Health

Boilers and pressure vessels inspected	5,180
Food establishments permitted	12,298
Inspections of food establishments	34,866
Wastewater complaints investigated	2,067
Sewage disposal inspections and soil/site evaluations	19,802
Dairy farm inspections	942
Dairy samples collected for evaluation	1,940

Radiological Health and Safety

Radioactive materials licenses inspected	96
Healing Arts X-ray tubes inspected	2,514
Mammography units inspected	141
Environmental samples collected and analyzed for radioactivity around the Grand Gulf Nuclear Station	970
Evaluations and/or screenings for Radon (indoor)	1,130

Emergency Medical Services

Ambulance permits issued	532
Emergency medical technicians certified/recertified	1,471
EMS drivers certified/recertified	1,732
Emergency services licensed/relicensed	142

Licensure

Hospitals – accredited (licensed)	71
Hospitals – non-accredited (licensed)	54
Nursing facilities (licensed)	203
Home health agencies (licensed) (3 are inactive)	60
Intermediate care facilities for the mentally retarded (licensed)	14
Psychiatric Residential Treatment Facilities (licensed)	7
Personal care homes (licensed)	182
Hospices (licensed)	185
Ambulatory surgical facilities (licensed) (includes single specialty)	65
Community mental health centers (certified only)	8
Rural health clinics (certified only)	153
End stage renal disease facilities (certified only)	71
Comprehensive outpatient rehabilitation facilities (certified only)	4
Portable x-ray (certified only)	8
Outpatient physical therapy facilities (certified only)	38
Abortion facilities (licensed)	1
CLIA laboratories (excluding VA labs) (certified only)	2,259
Utilization Review Agents	125
Health facilities surveyed	980
Health facility complaints investigated	539
Number of inspections of youth camps	86
Child residential care homes monitored per Notification Act X	12
Number of general/renewal inspections of daycare facilities	1,866
Daycare complaints investigated	582
Licenses issued for athletic trainers, audiologists, dietitians, hearing aid specialists, occupational therapists and occupational therapy assistants, respiratory care practitioners, speech-language pathologists, and professional art therapists	5,387
Total number of registered or certified radiation technologists, audiology aides, eye enucleators, speech language pathology aides, tattoo artists, body piercers, and hair braiders	3,771

Planning and Resource Development

Certificate of Need (CON) applications reviewed	35
Declaratory rulings issued	118
Capital Expenditures Authorized through Issued CONs	\$235,391,556

Rural Health

Number of technical assistance/information requests processed	102
Number of critical access hospitals assisted	27

Primary Care Development

Health Professional Shortage Areas designations approved	167
J-1 physicians placed	14
Patients served through Mississippi Qualified Health Center grant program	69,217

Vital Statistics

Calendar Year 2007

Births	45,512
Deaths	27,637
Marriages	15,824
Divorces	13,060
Fetal deaths	479
Induced terminations	2,932
Adoptions	1,317

Fiscal Year 2008

Certified copies of vital records issued	494,349
Answered calls to the Office of Health Statistics	126,727

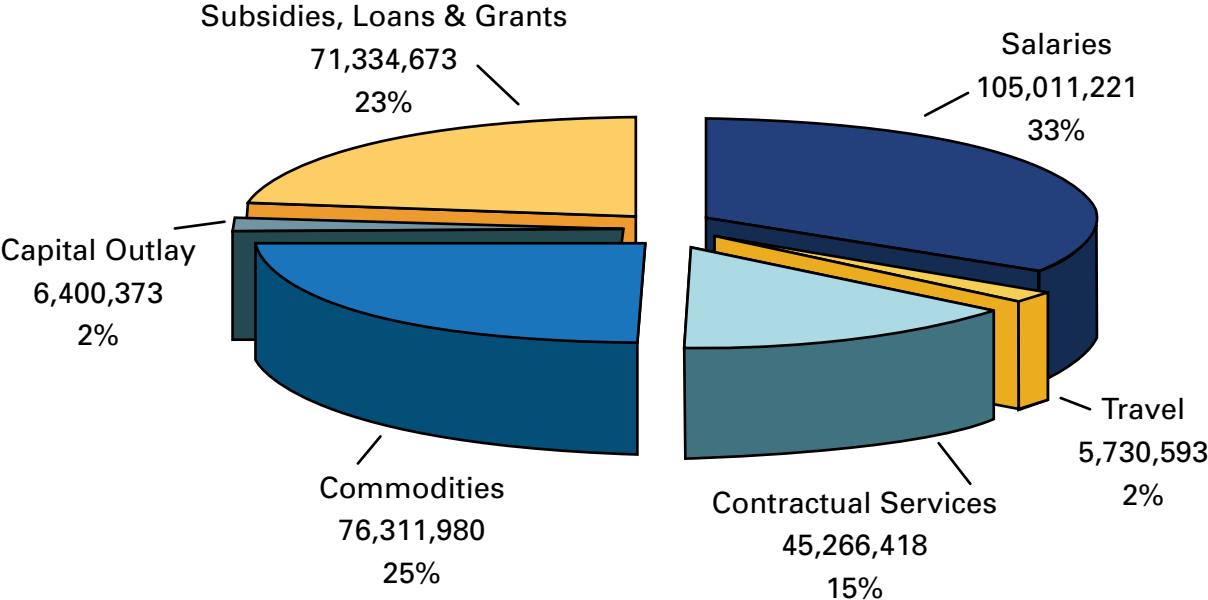
Communications

News releases produced	80
Web page visits	689,451
Web page documents downloaded	167,137
News release distribution – media outreach	18,144
Total number of media inquiries	815
Requests for public records (submittals and responses)	131
Original artwork designed and printed – public health campaigns	315
Agency forms created and revised	272
Major news stories generated	4,536

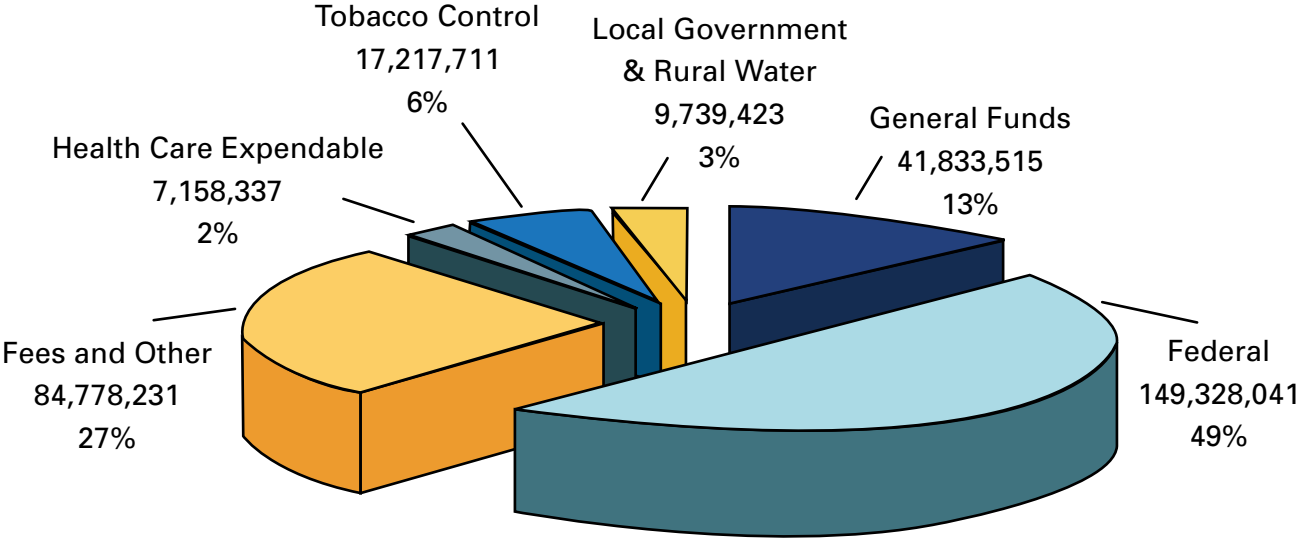
**Expenditures
Fiscal Year 2008**

2008

Fiscal Year 2008 Expenditures by Major Category



Funding Sources for Fiscal Year 2008 Expenditures



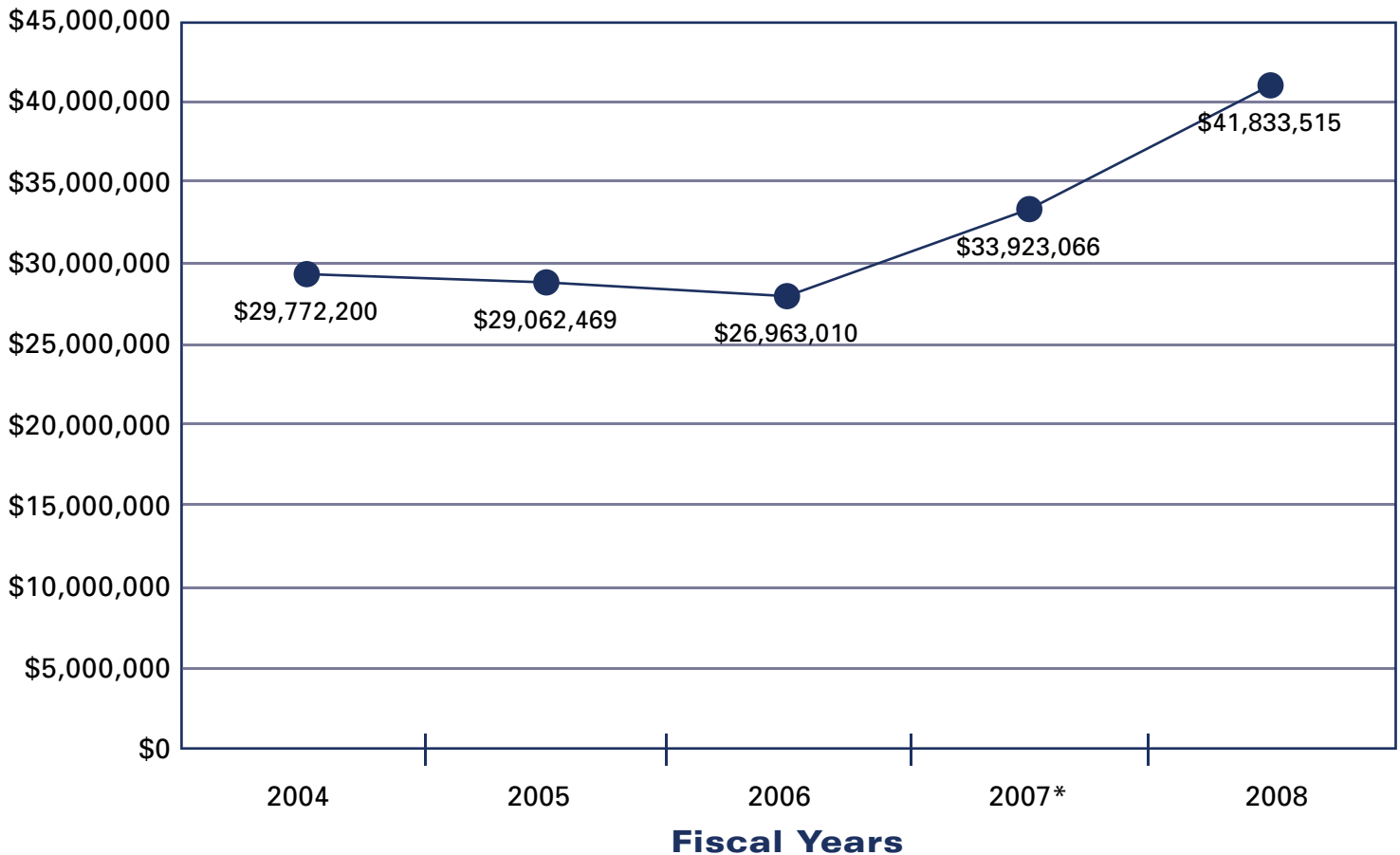
Expenditure Funding Sources For Fiscal Years 2004-2008

	2004	2005	2006	2007	2008
General Funds ¹	\$ 29,772,200	\$ 29,062,469	\$ 26,963,010	\$ 32,664,735	\$ 41,833,515
Federal	101,620,105	114,567,997	126,363,074	146,943,065	149,328,041
Fees and Other	69,473,990	65,534,045	71,079,496	80,111,063	84,778,231
Health Care Expendable	12,271,557	11,582,352	11,506,417	9,859,513	7,158,337
Tobacco Control ²	2,598,422	2,576,512	2,567,386	1,258,331	17,217,711
Bioterrorism	7,831,677	18,102,136			
Local Government & Rural Water	14,960,790	5,463,959	8,666,536	10,163,303	9,739,423
Burn Care			12,563		
Total	\$238,528,741	\$246,889,470	\$247,158,482	\$281,000,010	\$310,055,258

¹In FY 2008 the general fund amount included \$4,930,201 from a deficit appropriation awarded by the Legislature to fund the purchase of antiviral drugs.

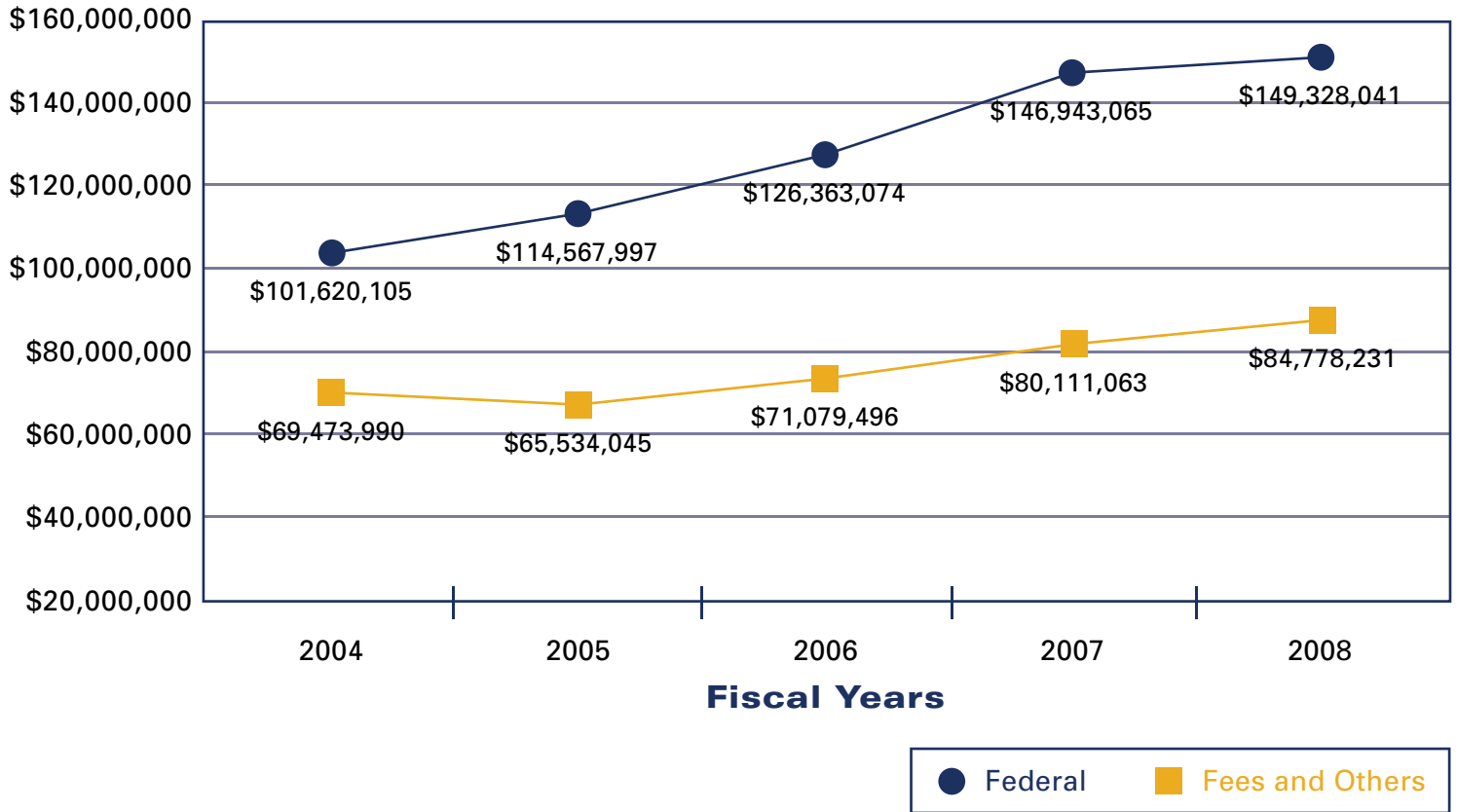
²Prior to FY 2008 this funding source was known as "Tobacco Pilot." In FY 2007 the amount was funded with a deficit appropriation awarded by the Legislature to fund the school nurse program.

General Fund Expenditures



*The fiscal year 2007 amount was revised to include \$1,258,331 from a general fund deficit appropriation approved by the Legislature to fund the school nurse program.

Special Fund Expenditures



Expenditures by Major Category For Fiscal Years 2004-2008

	2004	2005	2006	2007	2008
Salaries	\$ 87,978,179	\$ 92,467,322	\$ 92,682,882	\$ 97,500,563	\$105,011,221
Travel	4,269,310	4,923,889	4,840,344	4,952,239	5,730,593
Contractual Services	33,397,467	37,238,847	43,978,407	43,754,984	45,266,418
Commodities	48,301,676	61,026,367	56,790,001	61,519,736	76,311,980
Capital Outlay	3,722,605	5,116,238	2,814,403	2,387,534	6,400,373
Vehicles				26,306	
Wireless Comm. Devices				1,850	
Subsides, Loans & Grants	60,859,504	46,116,807	46,052,445	70,856,798	71,334,673
Total	\$238,528,741	\$246,889,470	\$247,158,482	\$281,000,010	\$310,055,258

Expenditures by Program For Fiscal Years 2004-2008

	2004	2005	2006	2007	2008
Chronic Illness	\$ 11,390,063	\$ 7,688,694	\$ 7,978,888	\$ 8,526,187	\$ 8,715,758
Disease Prevention	41,511,872	46,872,513	37,713,652	43,979,893	46,977,664
Environmental Health	24,386,875	12,689,733	14,213,666	15,610,890	17,881,253
Health Care Planning & Licensure	13,440,635	24,330,851	32,918,185	46,909,537	28,329,504
Maternal & Child Health	108,188,618	112,267,120	111,080,601	121,946,988	140,419,736
Support Services	14,219,789	16,897,952	19,215,812	22,453,498	19,057,250
Tobacco Control	2,598,422	2,576,512	2,567,386	1,258,331	17,217,711
Bioterrorism	7,831,677	18,102,136	12,791,193	10,151,383	16,786,758
Local Government & Rural Water	14,960,790	5,463,959	8,666,536	10,163,303	9,739,423
Burn Care			12,563		
Pandemic Flu Antiviral Drugs					4,930,201
Total	\$238,528,741	\$246,889,470	\$247,158,482	\$281,000,010	\$310,055,258

**Travel
and Vehicle Report**

2008

Report on Official Travel

Name	Place	Purpose	Cost	Source
ABRAMS KIM R	BIRMINGHAM, AL	CROSS -BORDER EXERCISE PLANNING MEETING	\$248.00	Federal
	BIRMINGHAM, AL	SOUTH CENTRAL PARTNERSHIP ADVISORY MEETING	\$407.00	Federal
	NEW ORLEANS, LA	SOUTH CENTRAL PUBLIC HEALTH LEADERSHIP	\$315.00	Federal
	ORANGE BEACH, AL	SOUTH CENTRAL PUBLIC HEALTH LEADERSHIP	\$206.00	Federal
ALLEN HARVEY KEITH	ANNAPOLIS, MD	ASDWA MEMBER MEETING	\$932.00	Federal
	BOCA RATON, FL	ASDWA'S ANNUAL CONFERENCE	\$1,183.00	Federal
	PINE MOUNTAIN, GA	EPA'S STATE DIRECTORS MEETING	\$841.00	Federal
	ASHEVILLE, NC	EPA'S STATE WATER DIRECTORS' MEETING	\$1,017.00	Federal
ARMSTRONG MARY GAYLE	DESTIN, FL	M.A.F.P. ANNUAL MEETING 2007	\$1,514.00	State
BAILEY PATRICIA ANN	SAN DIEGO, CA	2008 FPMTM MALE REPRODUCTIVE HEALTH CONFERENCE	\$1,624.00	Federal
BEEMAN STEPHEN KENN	NASHVILLE, TN	2008 NDMS TRAINING SUMMIT	\$756.00	Federal
	ORLANDO, FL	REGION IV ESF 8 WORKSHOP	\$1,004.00	Federal
	PITTSBURGH, PA	SOCIETY FOR MEDICAL DECISION MAKING	\$1,130.00	Federal
BENDER DANIEL R	WASHINGTON, DC	APHA ANNUAL MEETING & EXPO	\$1,654.00	Federal
	ALEXANDRIA, VA	ASSN OF MATERNAL & CHILD HEALTH CONFERENCE	\$1,340.00	Federal
	ALEXANDRIA, VA	MCH FEDERAL/STATE PARTNERSHIP MEETING	\$1,247.00	Federal
	ATLANTA, GA	MCH TITLE V BLOCK GRANT REVIEW	\$657.00	Federal
BISHOP GAIL NADINE	ATLANTA GA	RACE TO ELIMINATE TB EDUCATION AND TRAINING	\$980.00	Federal
	ATLANTA, GA	TB PROGRAM MANAGER COURSE	\$1,422.00	Federal
BISHOP MELANIE KAYE	MINNEAPOLIS, MN	NATIONAL CONFERENCE ON TOBACCO HEALTH	\$1,149.00	Federal
BOLDEN LYNELL	TAMPA, FL	STD INTERVENTION FOR SUPERVISORS	\$1,156.00	Federal
BOLLS VERONICA	ATLANTA, GA	COUNCIL LICENSURE ENFORCEMENT & REGULATION TRAINING	\$356.00	Other
BOONE SUSAN	NEW ORLEANS, LA	SCPH ADVANCED CRISIS LEADERSHIP INSTITUTE	\$520.00	Other
BRACEY-WILSON VERNESIA	WASHINGTON, DC	HEALTHCARE PREP MEETING ESAR VHP PROG	\$469.00	Federal
BRANTLEY CHRISTI C	NASHVILLE, TN	ASDWA/EPA DATA MANAGEMENT USERS CONFERENCE	\$1,126.00	Federal
	SAN ANTONIA, TX	ASSN OF BOARDS OF CERTIFICATION	\$955.00	Federal
BREELAND CHARLES NEIL	ORLANDO, FL	REGION IV ESF 8 WORKSHOP	\$994.00	Federal
BRITTON ROMELLE	BOSTON, MA	EPA/ STATE EASTERN REGIONAL OPERATOR CERTIFICATION	\$2,100.00	Federal
BROWN ANTHONY	ATLANTA, GA	NATL WIC ASSN TECHNOLOGY CONFERENCE	\$925.00	Federal
	IN/MADISON.WI	SITE VISITS PIMS RFP	\$1,112.00	Federal
BROWN AUGUSTA N	ASHEVILLE, NC	APPALACHIAN CARDIOVASCULAR HEALTH NETWORK REG MTG	\$2,167.00	Federal
	ATLANTA, GA	GSA STROKE SYSTEMS TASK FORCE	\$11.00	Federal
	BIRMINGHAM, AL	IMPROVING STROKE CARE	\$470.00	Federal
BRUCE CHARLENE W	SAN ANTONIO, TX	CONFERENCE FOR FOOD PROTECTION	\$904.00	Other
BUCKLEW PASQUA ROSE	ORLANDO, FL	ASCCP MEETING FOR COLOSCOPY & CERVICAL PATHOLOGY	\$1,502.00	Federal
BURK KATHY GIBSON	MINNEAPOLIS, MN	2008 NATIONAL WIC ASSN	\$1,268.00	Federal
	BIRMINGHAM, AL	ASTPHSW SOCIAL WORKERS ANNUAL CONFERENCE	\$853.00	Federal
	ATLANTA, GA	NATL WIC ASSN TECHNOLOGY CONFERENCE	\$815.00	Federal
	ATLANTA, GA	SE REG MEETING ON SPEC SUPPL NUTRITION WIC	\$488.00	Federal
	ATLANTA, GA	SE REG MEETING ON SPECIAL NUTRITION (WIC)	\$507.00	Federal
	ATLANTA, GA	SERO OCTOBER 2007 STATE DIRECTORS MEETING	\$673.00	Federal
BYERS PAUL E	DENVER, CO	2008 CSTE ANNUAL CONFERENCE	\$2,036.00	Other
CAMPBELL JANE P	NEW ORLEANS, LA	DADE BEHIRING EDUCATION SYMPOSIUM	\$396.00	Federal
CANADA LARONDA L	ATLANTA, GA	COUNCIL LICENSURE ENFORCEMENT & REGULATION TRAINING	\$378.00	Other
CANNON GENEVA	ALEXANDRIA, VA	ASSN OF MATERNAL & CHILD HEALTH CONFERENCE	\$1,549.00	Federal

Report on Official Travel

Name	Place	Purpose	Cost	Source
CANNON GENEVA	NEW ORLEANS, LA	NEW BEGINNING FOR PERINATAL HEALTH	\$637.00	Federal
CARLISLE DIANE C	ORLANDO, FL	ASCCP MEETING FOR COLOSCOPY & CERVICAL PATHOLOGY	\$1,525.00	Federal
CARLISLE KATHY L	CLEARWATER, FL	BASIC LONG TERM CARE PURVEYOR TRAINING	\$1,063.00	Federal
CARLOCK ANN ELESIA	BIRMINGHAM, AL	ASTPHSW SOCIAL WORKERS ANNUAL CONFERENCE	\$631.00	State
CARSON JIMMY L	GREENSBORO, NC	NATIONAL CONFERENCE ON RADIATION CONTROL	\$1,483.00	Other
CARSON THOMAS SCOTT	ATLANTA, GA	2007 HIV DIAGNOSTICS CONFERENCE	\$1,108.00	Federal
	BETHESDA, MD	PART A AND PART B ADMIN OVERVIEW MEETING	\$928.00	Federal
CARTER LELA A	ATLANTA, GA	SERO OCTOBER 2007 STATE DIRECTORS MEETING	\$592.00	Federal
CASSELL JUDY B	DENVER, CO	DENVER TB COURSE	\$1,325.00	Federal
CHAMBERLAIN PENNY D.	DENVER, CO	DENVER TB COURSE	\$927.00	State
CHANEY JONATHAN MAX	MOBILE, AL	2008 ALABAMA-MISSISSIPPI HURRICANE CONFERENCE	\$603.00	Federal
	WASHINGTON, DC	HEALTHCARE PREP MEETING ESAR VHP PROG	\$1,785.00	Federal
CHISM ROSEMARY	NEW ORLEANS, LA	SOUTH CENTRAL PUBLIC HEALTH LEADERSHIP	\$572.00	Federal
	ORANGE BEACH, AL	SOUTH CENTRAL PUBLIC HEALTH LEADERSHIP	\$17.00	Federal
CLARK LAWRENCE H.	ALEXANDRIA, VA	MCH FEDERAL/STATE PARTNERSHIP MEETING	\$1,138.00	Federal
	ATLANTA, GA	MCH TITLE V BLOCK GRANT REVIEW	\$584.00	Federal
COCKRELL JOAN D	ATLANTA, GA	EPA REGION SDWIS TRAINING	\$858.00	Federal
COLEMAN IAN BREVARD	AUSTIN, TX	PRESENTING ORAL ARGUMENT ON CASE	\$792.00	State
COOPER MARGARET D	SANDESTIN, FL	FAMILY MEDICINE IN MOTION	\$1,745.00	Federal
COX LYNN T	OWINGS MILLS, MD	FUNDAMENTAL OF ADMINISTRATION CENTER	\$1,377.00	Federal
	DALLAS, TX	OASIS COORDINATORS CONFERENCE	\$1,115.00	Federal
	BALTIMORE, MD	TRAINING COORDINATOR'S CONFERENCE 2008	\$1,108.00	Federal
CRAIG JAMES H III	MOBILE, AL	2008 ALABAMA-MISSISSIPPI HURRICANE CONFERENCE	\$545.00	Federal
	LEXINGTON, KY	FEMA REG IV ESF 8 UNIFIED PLANNING COALITION	\$553.00	Federal
	ATLANTA, GA	PANDEMIC FLU PREPAREDNESS REG 4 WORKSHOP	\$132.00	Federal
	ATLANTA, GA	PUBLIC HEALTH PREPAREDNESS SUMMIT	\$1,445.00	Federal
	ORLANDO, FL	REGION IV ESF 8 WORKSHOP	\$868.00	Federal
	MOBILE, AL	REGION IV ESF UNIFIED PLANNING COALITION	\$496.00	Federal
CREEL NICHOLAS S	ATLANTA, GA	CDC CANCER CONFERENCE	\$798.00	Federal
DACE PATRINA ROBINSON	ATHENS, GA	REGI 4 ST & EPA ENVIRONMENTAL LAB MEETING	\$403.00	Other
	MOBILE, AL	SOUTHEAST REGIONAL MILK SEMINAR	\$375.00	State
DANIEL BETTYE	ORLANDO, FL	CDC DIABETES TRANSLATION CONFERENCE	\$1,298.00	Federal
	ATLANTA, GA	DIABETES PRIMARY PREVENTION INITIATIVE	\$356.00	Federal
	ATLANTA, GA	DIABETES PRIMARY PREVENTION INITIATIVE COMMITTEE	\$395.00	Federal
	ATLANTA, GA	DPCP PROGRAM DIRECTORS/COORDINATORS MEETING	\$1,352.00	Federal
DAVIS JUANITA	DETROIT, MI	HIV PREVENTION LEADERSHIP SUMMIT	\$1,469.00	Federal
DENSON LOUISA ETHELENE	ALEXANDRIA, VA	ASSN OF MATERNAL & CHILD HEALTH CONFERENCE	\$1,551.00	Federal
	LOS ANGELES, CA	FAMILY VIOLENCE PREV SERV ACT GRANTEE	\$1,147.00	Federal
	MEMPHIS, TN	FAMILY VIOLENCE PREVENTION WORKSHOP	\$270.00	Federal
	ATLANTA, GA	MCH TITLE V BLOCK GRANT REVIEW	\$568.00	Federal
	NEW ORLEANS, LA	NEW BEGINNING FOR PERINATAL HEALTH	\$348.00	Federal
DERSTINE REGINA	ATLANTA, GA	CDC INTERNATIONAL SYMPOSIUM ON BIOSAFETY	\$1,376.00	Federal
DILLON ANN WHITTINGTON	ATLANTA, GA	ANNUAL CONFERENCE ON WOMEN & THEIR HEALTH	\$925.00	Federal
DIXON IDA MAE	NEW ORLEANS, LA	SOUTH CENTRAL PUBLIC HEALTH LEADERSHIP	\$375.00	Other
DIXON IDA MAE	ORANGE BEACH, AL	SOUTH CENTRAL PUBLIC HEALTH LEADERSHIP	\$256.00	Other

Report on Official Travel

Name	Place	Purpose	Cost	Source
DIXON SHERRINA NICOLE	ATLANTA, GA	MOLECULAR SUBTYPING OF E. COLI O157:H7	\$1,240.00	Federal
DRAKE CHARLES C	BOSTON, MA	BIO DETECTION SURVEILLANCE SYSTEM (EARS)	\$795.00	Federal
DUNNING SHELETHEA M	ATLANTA, GA	CDC CANCER CONFERENCE	\$1,085.00	Federal
EGGER STEPHEN G	BALTIMORE, MD	2008 KIDNEY COMMUNITY EMERGENCY RESPONSE SUMMIT	\$1,104.00	Federal
	CLEARWATER, FL	BASIC HOME HEALTH MEETING	\$1,174.00	Federal
	BALTIMORE, MD	NATL QIES CONFERENCE	\$1,471.00	Federal
	DALLAS, TX	OASIS COORDINATORS CONFERENCE	\$1,118.00	Federal
EVANS VALENCIA	NEW ORLEANS, LA	2008 HOPWA APR/CAPER REGIONAL TRAINING	\$822.00	Federal
FANCHER JESSICA LEE	CHARLESTON, SC	AMTA WORKSHOP	\$1,111.00	Federal
	NEW ORLEANS, LA	ASDWA SECURITY COORDINATORS WORKSHOP	\$171.00	Federal
FORTENBERRY DEBORAH E	ALBUQUERQUE, NM	ANNUAL STATES SOUTHERN CONSORTIUM OF CLIA SURVEYOR	\$1,252.00	Federal
	DALLAS, TX	CLIA LABORATORY SURVEYOR UPDATE TRAINING	\$916.00	Federal
	LONGMONT, CO	CLIA/QIES/ASPEN TRAIN THE TRAINER MEETING	\$1,127.00	Federal
FORTUNE MELODY	ATLANTA, GA	2007 CDC CANCER CONFERENCE	\$1,209.00	Federal
	WASHINGTON, DC	HPV & CERVICAL CANCER SUMMIT	\$1,046.00	Federal
FOSTER ANGELA	AUSTIN, TX	HPLC TRAINING	\$694.00	Federal
FOSTER JACQUELINE	ATLANTA, GA	NATIONAL HIV PREVENTION CONFERENCE	\$645.00	Federal
FUNCHES TANYA TOMEKIO	ORLANDO, FL	CDC DIABETES TRANSLATION CONFERENCE	\$1,256.00	Federal
	BIRMINGHAM, AL	IMPROVING STROKE CARE	\$211.00	Federal
	MINNEAPOLIS, MN	NATIONAL CONFERENCE ON TOBACCO OR HEALTH	\$1,366.00	Federal
	WASHINGTON, DC	NATIONAL PREV AND HEALTH PROMOTION SUMMIT	\$1,286.00	Federal
	DENVER, CO	NATL PUBLIC HEALTH STROKE SUMMIT	\$780.00	Federal
	LITTLE ROCK, AR	SOUTHERN OBESITY SUMMIT	\$705.00	Federal
GALES MARY ELLA	OVERLAND PARK, KS	NATL ASSN OF FARMERS MARKET NUTRITION PROG	\$852.00	Federal
	NEW ORLEANS, LA	NATL COMMODITY SUPPLEMENT FOOD PROG ASSN	\$884.00	Federal
GARRETTE-OLUADE PATRICIA	SEATTLE, WA	VITAL STATISTICS COOPERATIVE PROG DIR MTG	\$1,470.00	Other
GASTON DOROTHY	BIRMINGHAM, AL	CROSS -BORDER EXERCISE PLANNING MEETING	\$409.00	Federal
	NEW ORLEANS, LA	SCPH ADVANCED CRISIS LEADERSHIP INSTITUTE	\$346.00	Federal
	NEW ORLEANS, LA	SCPHP WORKFORCE ADVISORY MEETING	\$368.00	Federal
	BIRMINGHAM, AL	SOUTH CENTRAL PARTNERSHIP ADVISORY MEETING	\$401.00	Federal
	BIRMINGHAM, AL	SOUTH CENTRAL PUBLIC HEALTH PARTNERSHIP	\$598.00	Federal
GENOUS LORI A	ALEXANDRIA, VA	CDC ANTL LEAD POISONING PREVENTION TRAINING	\$1,626.00	Federal
	MIAMI, FL	ELIMINATING LEAD POISONING IN REGION IV	\$968.00	Federal
GIBBS ONA SYKES	ATLANTA, GA	NATL WIC ASSN TECHNOLOGY CONFERENCE	\$833.00	Federal
GIBSON JAMES THOMAS	WASHINGTON, DC	HEALTHCARE PREP MEETING ESAR VHP PROG	\$1,425.00	Federal
GINN KATHRYN A	ORLANDO, FL	ASCCP MEETING FOR COLOSCOPY & CERVICAL PATHOLOGY	\$1,515.00	Federal
GIVENS PHYLLIS A	PHILADELPHIA, PA	EPA QUALITY SYSTEM TRAINING EVENT	\$977.00	Other
GONG HARRY D. JR	DALLAS, TX	PUB WORKS PROJECT MANAGEMENT BOOTCAMP	\$1,069.00	Other
GONG WILLIAM	ATLANTA, GA	2007 PUBLIC HEALTH INFORMATION NETWORK CONFERENCE	\$987.00	Federal
GOODWIN TRACI B	ATLANTA, GA	INTERNATIONAL METABOLIC NUTRITION CONF	\$1,157.00	Other
GRAHAM JUANITA CAROL	DENVER, CO	ANNUAL CITYMATCH MCH LEADERSHIP	\$573.00	Federal
	WASHINGTON, DC	APHA ANNUAL MEETING & EXPO	\$1,557.00	Federal
	ORLANDO, FL	ASTDN CONFERENCE & CONTINUING NURSING EDUCATION	\$1,290.00	Federal
GRAHAM JUANITA CAROL	WASHINGTON, DC	HEALTH START GRANTEE MEETING	\$1,135.00	Other
GRIFFITH ROBIN K	NEW ORLEANS, LA	SOUTH CENTRAL PUBLIC HEALTH LEADERSHIP	\$73.00	Federal

Report on Official Travel

Name	Place	Purpose	Cost	Source
GUTHRIE-LEWIS ELVIE P	MINNEAPOLIS, MN	2008 NATIONAL WIC ASSN	\$1,517.00	Federal
	IN/MADISON.WI	SITE VISITS PIMS RFP	\$1,128.00	Federal
GUYNES DENNIS H	NASHVILLE, TN	2008 NDMS TRAINING SUMMIT	\$790.00	Federal
HAN NINGLONG	ALEXANDRIA, VA	CDC ANTL LEAD POISONING PREVENTION TRAINING	\$1,618.00	Federal
	WASHINGTON, DC	NATIONAL BIRTH DEFECTS PREVENTION NETWORK	\$2,451.00	Other
	MIAMI, FL	REG IV CHILDHOOD LEAD POISONING PREVENTION	\$675.00	Federal
HARALSON CANDACE D	ATLANTA, GA	CDC NBCCEDP QUALITY ASSURANCE	\$623.00	Federal
HARGROVE DIANE W	NEW ORLEANS, LA	SCPH ADVANCED CRISIS LEADERSHIP INSTITUTE	\$181.00	State
HARGROVE ROLAND	GAITHERSBURG, MD	MQSA INSPECTION PROCEDURES COURSE II	\$3,652.00	Other
	GAITHERSBURG, MD	MQSA INSPECTION PROCEDURES COURSE III	\$3,978.00	Other
HARRINGTON MONICA	BALTIMORE, MD	VACCINE UNIV VFC VACCINE MANG TRAINING	\$1,237.00	Federal
HARRION GENE A JR	RICHMOND, VA	3RNET ANNUAL CONFERENCE	\$865.00	Other
	WASHINGTON, DC	HRSA ALL GRANTEE MEETING	\$1,443.00	Other
	DENVER, CO	NASHP STATE HEALTH POLICY CONFERENCE	\$210.00	Other
	WASHINGTON, DC	NATIONAL ACADEMY OF STATE HEALTH POLICY	\$197.00	Other
HARRIS ROZELIA	RICHMOND, VA	ANNUAL 3 RNET CONFERENCE	\$1,050.00	Federal
	NEW ORLEANS, LA	ANNUAL NATIONAL RURAL HEALTH CONFERENCE	\$1,104.00	Federal
	TAMPA, FL	NATL HEALTH SERVICES CORP ANNUAL CONF	\$1,542.00	Federal
	WASHINGTON, DC	OFFICE OF RURAL HEALTH POLICY PROG MEETING	\$1,388.00	Federal
HARRIS TARSHA LASHA	SAVANNAH, GA	STATE RURAL HEALTH ANNUAL REGIONAL MEETING	\$1,302.00	Other
	AUSTIN, TX	ANNUAL TRAINING WORKSHOP ON BIONUMERICS 7 GELCOMP	\$1,122.00	Federal
HAYES SANDRA C	HOUSTON, TX	2008 ASTHMA GRANTEE MEETING	\$555.00	Federal
	MIAMI, FL	2008 NATIONAL ORAL HEALTH CONFERENCE	\$671.00	Federal
	MIAMI, FL	2008 NATIONAL ORAL HEALTH CONFERENCE	\$672.00	Federal
	WASHINGTON, DC	APHA ANNUAL MEETING	\$1,230.00	Federal
	WASHINGTON, DC	NATIONAL PREV AND HEALTH PROMOTION SUMMIT	\$1,261.00	Federal
HAYNES LINDA ANN	ATLANTA, GA	2007 HIV DIAGNOSTICS CONFERENCE	\$1,407.00	Federal
	CHICAGO, IL	2008 NATIONAL STD PREVENTION CONFERENCE	\$897.00	Federal
	ORLANDO, FL	NURSES IN AIDS CARE	\$1,438.00	Federal
HAYWARD MARGARET SUE	BALTIMORE, MD	TRAINING COORDINATOR'S CONFERENCE 2008	\$1,113.00	Federal
HENRY KAY G	ORLANDO, FL	ASSN OF STATE & TERRITORIAL DIRECTORS OF NURSING	\$1,276.00	Federal
	ORLANDO, FL	REGION IV ESF 8 WORKSHOP	\$867.00	Federal
	IND.,IN/MADISON.WI	SITE VISITS PIMS RFP	\$1,087.00	Federal
HOGGATT PHILIS H	ATLANTA, GA	INTERNATIONAL METABOLIC NUTRITION CONF	\$1,171.00	Other
	IND.,IN/MADISON.WI	SITE VISITS PIMS RFP	\$1,021.00	Federal
HOLCOMBE JAMES M	ATLANTA, GA	NATIONAL TB CONTROLLERS WORKSHOP	\$1,358.00	Federal
	GREENVILLE, SC	SOUTHEASTERN TB CONTROLLERS CONFERENCE	\$953.00	Federal
HORNE EVERETTE J	DALLAS-FT WORTH, TX	GEBCO - MOLD ASSESSMENT CONSULTANT	\$1,151.00	State
HORNE ROSEMARY W	ATLANTA, GA	2007 ANNUAL ASSESSMENT INITIATIVE CONFERENCE CDC	\$1,960.00	Federal
HOUGH SANDRA L	OVERLAND PARK, KS	NATL ASSN OF FARMERS MARKET NUTRITION PROG	\$789.00	Federal
HOUSTON ISABEL HANNA	BALTIMORE, MD	CMS HOSPITAL UPDATE MEETING	\$1,332.00	Federal
HUDSON CARILYN F	ORLANDO, FL	ASCCP MEETING FOR COLOSCOPY & CERVICAL PATHOLOGY	\$1,540.00	Federal
HURSEY TERRENCE E	NEW ORLEANS, LA	SOUTH CENTRAL PUBLIC HEALTH LEADERSHIP	\$457.00	State
INGERSOLL WANDA LYNN	ST. LOUIS, MO	2008 APHL ANNUAL MEETING	\$1,391.00	Other
	NEW ORLEANS, LA	PITTSBURG CONF ON ANALYTICAL CHEMISTRY	\$30.00	Other

Report on Official Travel

Name	Place	Purpose	Cost	Source
IRVIN REGINA L	ATLANTA, GA	NATIONAL IMMUNIZATION CONFERENCE	\$2,332.00	Federal
IRWIN THERESA ANN	ALBUQUERQUE, NM	ANNUAL STATES SOUTHERN CONSORTIUM OF CLIA SURVEYOR	\$1,253.00	Federal
IVY STEPHANIE NICOLE	ARLINGTON, VA	NATL FETA L AND INFANT MORTALITY REVIEW CONF	\$648.00	Federal
JAMES REBECCA C	NEW ORLEANS, LA	SCPH ADVANCED CRISIS LEADERSHIP INSTITUTE	\$297.00	Federal
	IND.,IN/MADISON.WI	SITE VISITS PIMS RFP	\$1,034.00	Federal
JERNIGAN CURTIS D	NASHVILLE, TN	2008 NDMS TRAINING SUMMIT	\$900.00	Federal
JOHNSON DANA L	TAMPA, FL	2008 CT LABORATORY FORUM	\$1,196.00	Federal
JOHNSON KENDRA LAKITA	CHICAGO, IL	NATIONAL STD PREVENTION CONFERENCE	\$1,754.00	Federal
JOHNSON NIKKI GIOVANNI	LAS VEGAS, NV	NFPA WORLD SAFETY CONFERENCE & EXPOSITION	\$1,091.00	Federal
	ST. LOUIS, MO	SMOKE ALARM GRANTEE MEETING	\$1,032.00	Federal
JOHNSON RICHARD A	ORLANDO, FL	BEHAVIOR RISK FACTOR SURVEILLANCE SYSTEM CONFERENCE	\$975.00	Federal
	ORLANDO, FL	NATL ASSN OF PUBLIC HEALTH STATISTICS	\$1,132.00	Other
	RALEIGH, NC	VACCINE UNIV VFC VACCINE MANG TRAINING	\$1,424.00	Other
JOHNSON TIFFANY ONIECE	MINNEAPOLIS, MN	NATIONAL CONFERENCE ON TOBACCO OR HEALTH	\$1,463.00	Federal
	DETROIT, MI	TOBACCO CONTROL STRATEGY\ FOR PRIORITY POP	\$805.00	Other
JOHNSTON DAVID G.	DENVER, CO	DENVER TB COURSE	\$832.00	Federal
JONES LAKEISHA RENEE	AUSTIN, TX	HPLC TRAINING	\$771.00	Federal
JONES NANCY H	ATLANTA, GA	ANALYSIS OF VOC'S BY GC/MSD	\$797.00	Federal
	RICHMOND, VA	RICININE/ABRINE BY LC/MS/MS	\$1,398.00	Federal
JORDAN AMANDA T	ORLANDO, FL	ASCCP MEETING FOR COLOSCOPY & CERVICAL PATHOLOGY	\$1,585.00	Federal
JORDAN MARY L	MINNEAPOLIS, MN	2008 NATIONAL WIC ASSN	\$1,672.00	Federal
	SAVANNAH, GA	2008 NATL WIC ASSN WINTER BOARD MEETING	\$1,004.00	Federal
	ATLANTA, GA	SE REG MEETING ON SPEC SUPPL NUTRITION WIC	\$443.00	Federal
	ATLANTA, GA	SE REG MEETING ON SPECIAL NUTRITION (WIC)	\$459.00	Federal
JUSTICE JOHN DANIEL	MIAMI, FL	2008 NATIONAL ORAL HEALTH CONFERENCE	\$1,139.00	Federal
	NEW ORLEANS, LA	SCPH ADVANCED CRISIS LEADERSHIP INSTITUTE	\$317.00	Federal
KEENE MARILYN G	DENVER, CO	DENVER TB COURSE	\$1,416.00	Federal
KENNEDY KIMBERLY S	ATLANTA, GA	MOLECULAR METHODS FOR OUTBREAK INVEST	\$1,834.00	Federal
	ATLANTA, GA	PILSENET WORKS. ON PFGE SUBTYPING OF E. COLI	\$752.00	Federal
KING KATHERINE A	HOUSTON, TX	PCCA ASEPTIC TECHNIQUE COMPOUNDING COURSE	\$524.00	Other
KITTLE THERESA	BOSTON, MA	BIO DETECTION SURVEILLANCE SYSTEM (EARS)	\$744.00	Federal
KOIVA ASHLEY W	BIRMINGHAM, AL	PROFESSIONAL ENGINEERS WORKSHOP	\$415.00	Federal
KOWALUK NICHOLAS M	PORTLAND, OR	APHL LRN NATIONAL MEETING	\$1,358.00	Federal
KWELLER DAVID B	OLATHE, KS	NBRC/AARC LIAISON ST LICENSURE GROUP MEETING	\$107.00	Other
LAMMONS KELLY N	PHOENIX, AZ	DESIGNING & CONDUCTING TRAINING FOR SENTINEL LAB	\$1,588.00	Federal
LANGSTON LEDON	SAN ANTONIO, TX	COMPREHENSIVE COLOSCOPY	\$1,698.00	Federal
LATHAM TEKEMIA O	BALTIMORE, MD	ANALYZER RADIATION SAFETY TRAINING (XRF)	\$907.00	Federal
	ALEXANDRIA, VA	CDC ANTL LEAD POISONING PREVENTION TRAINING	\$1,700.00	Federal
	CHARLESTON, SC	LEAD & HEALTHY HOMES/INDOOR ENVIRONMENTAL	\$2,484.00	Federal
	GREENVILLE, SC	LEAD INSPECTOR/ASSESSOR TRAINING COURSE	\$1,290.00	Federal
LEA SUSAN B	NEW ORLEANS, LA	SOUTH CENTRAL PUBLIC HEALTH LEADERSHIP	\$422.00	Federal
LEE GLORIA F	NEW ORLEANS, LA	EARLY HEARING DETECTION & INTERVENTION CONFERENCE	\$399.00	Federal
	BIRMINGHAM, AL	SOUTHEAST REGION EHDI CONFERENCE	\$596.00	Federal
LEE THELMA	ATLANTA, GA	CDC LRN DRINKING WATER PROCESSING	\$1,008.00	Federal
LEWERS DEBRA	WILDERVILLE, TN	TN/MEMPHIS CRI RETREAT	\$73.00	Federal

Report on Official Travel

Name	Place	Purpose	Cost	Source
LEWIS-SMITH JEANETTE V	ATLANTA, GA	BASIC HOSPITAL TRAINING	\$936.00	Federal
LI MINA	ATLANTA, GA	2007 CDC CANCER CONFERENCE	\$1,249.00	Federal
	ATLANTA, GA	CDC COMPREHENSIVE CANCER CONTROL GRANTEE MEETING	\$1,081.00	Federal
	BALTIMORE, MD	DIALOGUE FOR ACTION COLORECTAL CANCER SCREENING	\$1,375.00	Federal
LUCKETT VERONICA J	ATLANTA, GA	NATL WIC ASSN TECHNOLOGY CONFERENCE	\$834.00	Federal
	ATLANTA, GA	SE REG MEETING ON SPECIAL NUTRITION (WIC)	\$451.00	Federal
	IND.,IN/MADISON.WI	SITE VISITS PIMS RFP	\$994.00	Federal
LUKE JOHN T	SAN ANTONIO, TX	CONFERENCE FOR FOOD PROTECTION	\$981.00	State
MABERRY RANESSA O	ATLANTA, GA	QUARTERLY STATE SURVEY DIRECTOR'S MEETING	\$452.00	Federal
MAGEE PATRICIA COLLEEN	BALTIMORE, MD	ESRD/STAR TRAINING	\$1,856.00	Federal
MANNING TERESA C	BALTIMORE, MD	ESRD/STAR TRAINING	\$2,021.00	Federal
	HARTFORD, CT	NATL INSTITUTE OF GOVERNMENTAL PURCHASING	\$1,452.00	Federal
MANNING TERI D	ALBUQUERQUE, NM	ANNUAL STATES SOUTHERN CONSORTIUM OF CLIA SURVEYOR	\$1,252.00	Federal
	DALLAS, TX	CLIA LABORATORY SURVEYOR UPDATE TRAINING	\$1,257.00	Federal
MARANGER GEORGE KEITH	BATON ROUGE, LA	LEAD INSPECTOR/ASSESSOR TRAINING COURSE	\$251.00	Federal
MARTIN GARY ALAN	HARTFORD, CT	NATL INSTITUTE OF GOVERNMENTAL PURCHASING	\$1,678.00	Federal
MCANALLY EDWARD R	ORLANDO, FL	BEHAVIOR RISK FACTOR SURVEILLANCE SYSTEM CONFERENCE	\$904.00	Federal
	ATLANTA, GA	BRFSS REGIONAL TRAINING WORKSHOP	\$1,992.00	Federal
	SILVER SPRING, MO	VITL STAT: MEASUREMENT & CURRENT ANALYTIC	\$1,849.00	Other
MCCLINTY JOYCE A	BALTIMORE, MD	VACCINE UNIV VFC VACCINE MANG TRAINING	\$1,237.00	Federal
MCCOY JOSIE CAROLYN	PHOENIX,AZ	NCIT BASIC PROGRAM	\$1,460.00	Other
MCELROY GERALDINE	SAN ANTONIO, TX	COMPREHENSIVE COLOSCOPY	\$1,598.00	Federal
MCFARLAND CARRIE M	SAN ANTONIO, TX	AAAM INJURY SCALING COURSE	\$1,388.00	Other
MCGHEE DERRICK LOUIS	DECATUR, GA	INTRO TO STD INTERVENTION (ISTDI)	\$2,567.00	Federal
MCGILVERY IRMA FAYE	LONGMONT, CO	ASPEN ADVANCED TRAINING - SECTION 05	\$869.00	Federal
	BALTIMORE, MD	NATL QIES CONFERENCE	\$1,471.00	Federal
MCGINTY EMMA ELIZABETH	DENVER, CO	CHRONIC DISEASE ACADEMY	\$891.00	Federal
	WASHINGTON, DC	INDOOR AIR QUALITY TOOLS FOR SCHOOLS	\$1,246.00	Federal
MCLEOD AMY L	CHARLESTON, SC	AMTA WORKSHOP	\$1,391.00	Federal
MINER BRITTANY L	SALT LAKE CITY, UTAH	EI MASS SPECTRUM INTERPRETATION	\$1,229.00	Federal
MITCHELL JILLAYNE CHARITY	AUSTIN, TX	ADVANCED STD INTERVENTION	\$905.00	Federal
MITCHELL YOLANDA R	ATLANTA, GA	COUNCIL LICENSURE ENFORCEMENT & REGULATION TRAINING	\$747.00	Other
MOAK JAYSON DANIEL	HOUSTON, TX	H-304 NUCLEAR MEDICINE	\$1,157.00	Other
	ALBUQUERQUE, NM	NRC SECURITY SYSTEMS AND PRIN TRAINING	\$38.00	Other
	STAFFORD, TX	SAFETY ASPECTS OF WELL LOGGING	\$1,021.00	Other
	ST. ROSE, LA	SAFETY ASPECTS OF INDUSTRIAL RADIOGRAPHY	\$1,052.00	Other
MONGER MAUDA	ATLANTA, GA	MEDICAL MONITORING PROJ PRINC INVESTIGATOR	\$1,109.00	Federal
	MIAMI, FL	NATL CONFERENCE ON LATINOS AND AIDS	\$1,192.00	Federal
MOON KATHY S	ORLANDO, FL	REGION IV ESF 8 WORKSHOP	\$1,027.00	Federal
MOORE JESSICA GRACE	PHOENIX, AZ	CLEAR ANNUAL CONFERENCE	\$682.00	Other
MOORE JESSICA GRACE	KISSIMMEE, FL	NATL SAFETY PLAYGROUND SAFETY INST CERT	\$1,003.00	Other
MOORE LAURIE A	HOUSTON, TX	2008 ASTHMA GRANTEE MEETING	\$592.00	Federal
MOORE LOIS J	BALTIMORE, MD	VACCINE UNIV VFC VACCINE MANG TRAINING	\$1,237.00	Federal
MOORE TINA	PHOENIX, AZ	CLEAR NCIT SPECIALIZED PROGRAM	\$1,179.00	Other
MOORMAN GARY L	MOBILE, AL	FDA SOUTHEAST REGIONAL MILK SEMINAR	\$718.00	State

Report on Official Travel

Name	Place	Purpose	Cost	Source
MORROW YOLANDA DIANA	ALEXANDRIA, VA	NBCOT NATIONAL CONF ON OCCT THERAPY	\$1,277.00	Other
MOSCA NICHOLAS G.	NEW ORLEANS, LA	2008 NATIONAL RURAL HEALTH CONFERENCE	\$206.00	Other
	DALLAS, TX	AMERICAN DENTAL ANNUAL ASSN	\$986.00	Federal
	SAN FRANCISCO, CA	AMERICAN DENTAL ASSOC ANNUAL MEETING	\$1,294.00	Federal
	WASHINGTON, DC	HRSA HEALTH PROF ALL PROG MEETING	\$892.00	Federal
	MIAMI, FL	NATIONAL ORAL HEALTH CONFERENCE	\$1,471.00	Federal
	PHOENIX, AZ	NATL ORAL HEALTH LEADERSHIP PROGRAM	\$977.00	Other
MOULDER JUDY T	ORLANDO, FL	NATL ASSN OF PUBLIC HEALTH STATISTICS	\$1,107.00	Other
	RALEIGH, NC	VITAL STATISTICS COOPERATIVE PROG DIR MTG	\$1,308.00	Other
MUNDAY DANITA PRITCHARD	NEW ORLEANS, LA	EARLY HEARING DETECTION & INTERVENTION CONFERENCE	\$628.00	Federal
NELSON JOHNNY M	HARTFORD, CT	NATL INSTITUTE OF GOVERNMENTAL PURCHASING	\$1,305.00	Federal
NEORR BONNIE J	CULVER CITY, CA	BASIC LONG TERM CARE FACILITY SURVEYOR COURSE	\$1,765.00	Federal
NEWKIRK JAMES T	NASHVILLE, TN	WEB DESIGN CONFERENCE	\$960.00	State
NICHOLS LUCERSIA	DETROIT, MI	HIV PREVENTION LEADERSHIP SUMMIT	\$1,157.00	Federal
NICHOLSON BARBARA M	CHICAGO, IL	2008 UNLICENSED ASSISTIVE PERSONNEL WORKSHOP	\$604.00	Federal
NIX CHARLES RAY	CHARLESTON, SC	ANNUAL DEA NATIONAL CONFERENCE	\$843.00	Other
	ALBUQUERQUE, NM	NATIONAL NASCSA CONFERENCE	\$861.00	Other
NUTT LISA KAY	DALLAS, TX	ADVANCING EXCELLENCE IN AMERICA NURSING HOMES	\$1,075.00	Federal
NUTT PAMELA RISHER	WASHINGTON, DC	ASTHO SNS WORKGROUP MEETING	\$917.00	Federal
	LEXINGTON, KY	FEMA REG IV ESF 8 UNIFIED PLANNING COALITION	\$741.00	Federal
	CHARLESTON, SC	REG IV SNS PREPAREDNESS PLAN WORKSHOP	\$1,796.00	Federal
	WILDERVILLE, TN	TN/MEMPHIS CRI RETREAT	\$137.00	Federal
OLUADE OLUJIDE O	CHICAGO, IL	2008 NATIONAL STD PREVENTION CONFERENCE	\$744.00	Federal
PALMER RAMONA J	CULVER CITY, CA	BASIC LONG TERM CARE FACILITY SURVEYOR COURSE	\$1,899.00	Federal
PARKER MELISSA L	ANNAPOLIS, MD	ASDWA MEMBER MEETING	\$997.00	Other
	BOCA RATON, FL	ASDWA'S ANNUAL CONFERENCE	\$979.00	Other
	ASHEVILLE, NC	EPA'S STATE WATER DIRECTORS' MEETING	\$1,177.00	Other
PARROTT JUDY K	BIRMINGHAM, AL	NUTRITION FOR INFANTS, CHILDREN, ADOLESCENTS	\$910.00	Federal
PATE LINDA FAY	DENVER, CO	ASSN OF HEALTH FACILITY SURVEY AGENCIES	\$2,439.00	Federal
PEARSON KEVIN E	NEW ORLEANS, LA	SCPH ADVANCED CRISIS LEADERSHIP INSTITUTE	\$167.00	State
PERRY VICKIE MAXINE	BIRMINGHAM, AL	CROSS -BORDER EXERCISE PLANNING MEETING	\$253.00	Federal
PEYTON DAVID B	CHICAGO, IL	2008 NATIONAL STD PREVENTION CONFERENCE	\$728.00	Federal
PHILLIPS JULIAN M	IND.,IN/MADISON.WI	SITE VISITS PIMS RFP	\$972.00	Federal
PHILLIPS VELDA J.	ATLANTA, GA	LABORATORY METHODS FOR DETECTING RABIES	\$1,416.00	Other
POLK BERYL DENISE	TAMPA, FL	MCH LEADERSHIP SKILLS TRAINING INSTITUTE	\$278.00	Other
POWELL BROOK ELIZABETH	NEW ORLEANS, LA	MS/LA/AL RESTAURANT FOOD SERVICES EXPO	\$77.00	State
PULLIAM TOMMIE LEE	IND.,IN/MADISON.WI	SITE VISITS PIMS RFP	\$1,029.00	Federal
QUILTER STEPHEN M	ATLANTA, GA	NATIONAL TB CONTROLLERS WORKSHOP	\$1,377.00	Federal
	GREENVILLE, SC	SOUTHEASTERN TB CONTROLLERS CONFERENCE	\$926.00	Federal
QUINN JAMES ROBERT	ST LOUIS, MO	ANNUAL PULSENET UPDATE MEETING	\$1,002.00	Federal
REED MARY ALICE	ATLANTA, GA	REG IV JOINT MEETING MINORITY HEALTH, FAMILY PL	\$452.00	Federal
	ORLANDO, FL	REGION IV INFERTILITY PREV PROJ ADVISORY	\$774.00	Federal
	CHAPEL HILL, NC	RNDMU WORKSHOP & FAMILY PLANNING DIR MTG	\$1,423.00	Federal
REESE VICKI C	NEW ORLEANS, LA	SCPH ADVANCED CRISIS LEADERSHIP INSTITUTE	\$298.00	Federal
	WILDERVILLE, TN	TN/MEMPHIS CRI RETREAT	\$90.00	Federal

Report on Official Travel

Name	Place	Purpose	Cost	Source
RICHARDSON RODERICK L	OKLAHOMA CITY, OK	2008 JOINT MEETING OF STIPA & CDC CORE INJURY	\$1,542.00	Federal
	DECATUR, GA	SE REGIONAL INJURY CONTROL NETWORK	\$585.00	Federal
	ST. LOUIS, MO	SMOKE ALARM GRANTEE MEETING	\$937.00	Federal
RIDDLE KAREY JEWEL	BETHESDA, MD	EMSC GRANTEE MEETING	\$1,000.00	Other
RILEY ROGER E	NEW ORLEANS, LA	S CENTRAL PUBL HLTH WORKFORCE PARTNERSHIP	\$695.00	State
	IND/MADISON.WI	SITE VISITS PIMS RFP	\$985.00	Federal
	BIRMINGHAM, AL	SOUTH CENTRAL PARTNERSHIP ADVISORY MEETING	\$386.00	State
	BIRMINGHAM, AL	UAB EMERGENCY PREP & COM SYMPOSIUM	\$242.00	State
RIVES RYAN LEE	RICHMOND, VA	AGENTS OF BIOTERRORISM: LRN CONVENTIONAL METHODS	\$2,291.00	Federal
SCALES MICHAEL D	IND/MADISON.WI	SITE VISITS PIMS RFP	\$1,341.00	Federal
SCHWIRIAN KENNA Y	MOBILE, AL	SOUTHEAST REGIONAL MILK SEMINAR	\$353.00	State
	INDIANAPOLIS, IN	STATE MILK EVALUATION OFFICER'S WORKSHOP	\$1,383.00	State
SEAWRIGHT KENNETH C	NEW ORLEANS, LA	ASTHRO DIRECTORS OF PUB HLTH PREPAREDNESS MTG	\$324.00	Federal
	ATLANTA, GA	PUBLIC HEALTH PREPAREDNESS SUMMIT	\$1,448.00	Federal
	ORLANDO, FL	REGION IV ESF 8 WORKSHOP	\$969.00	Federal
SENNETT DEBORAH J	ORLANDO, FL	REGION IV ESF 8 WORKSHOP	\$977.00	Federal
	IND/MADISON.WI	SITE VISITS PIMS RFP	\$1,086.00	Federal
SETTLES LISA ANTONIA	DECATUR, GA	INTRO TO STD INTERVENTION (ISTDI)	\$2,442.00	Federal
SHANKS LAQUITA	WASHINGTON, DC	RURAL HEALTH POLICY ALL PROGRAM MEETING	\$1,570.00	Other
SHARP DENNIS LEON	DALLAS, TX	HIV/AIDS LAW AND PRACTICE	\$909.00	Federal
SHARPE ARTHUR C JR	NEW ORLEANS, LA	ASTHRO DIRECTORS OF PUB HLTH PREPAREDNESS MTG	\$558.00	Federal
	ORLANDO, FL	REGION IV ESF 8 WORKSHOP	\$1,018.00	Federal
	MOBILE, AL	REGION IV ESF UNIFIED PLANNING COALITION	\$478.00	Federal
	ATLANTA, GA	REGION IV SESF8 (UNIFIED PLANNING COALITION)	\$364.00	Federal
SHELBY MILLICENT LOUISE	ATLANTA, GA	CDC COMPREHENSIVE CANCER CONTROL MEETING	\$2,340.00	Federal
	ATLANTA, GA	DPCP PROGRAM DIRECTORS/COORDINATORS MEETING	\$1,443.00	Federal
SIMS SHARON D	METAIRIE, LA	LOUISIANA MOSQUITO CONTROL ASSN	\$629.00	Federal
	SAN DESTIN, FL	MS ACADEMY OF FAMILY PHYSICIANS	\$1,270.00	Other
SLADE KATHY N	IN/MADISON.WI	SITE VISITS PIMS RFP	\$1,120.00	Federal
SMILEY SHARON D	NEW ORLEANS, LA	SCPH ADVANCED CRISIS LEADERSHIP INSTITUTE	\$69.00	Federal
SMITH BOBBY JOE	RALEIGH, NC	SOUTHERN TRANS CORRIDOR PILOT DEMO	\$1,387.00	Other
SMITH JAN P	ALBUQUERQUE, NM	ANNUAL STATES SOUTHERN CONSORTIUM OF CLIA SURVEYOR	\$1,283.00	Federal
	DALLAS, TX	CLIA LABORATORY SURVEYOR UPDATE TRAINING	\$912.00	Federal
SMITH LARRY L	CHICAGO, IL	COURSE IN MATERNAL AND CHILD HEALTH	\$535.00	Other
SMITH ROGER WILLIAM	LONGMONT, CO	ASPEN BASIC TRAINING - 102	\$1,212.00	Federal
	TOWSON, MD	CMS LEADERSHIP SUMMIT	\$1,947.00	Federal
SMITH SUZANNE WAREN	ATLANTA, GA	2007 HIV DIAGNOSTICS CONFERENCE	\$1,373.00	Federal
SMITH-SILAS VALERIE L	NEW ORLEANS, LA	SOUTH CENTRAL PUBLIC HEALTH LEADERSHIP	\$567.00	Other
SMITH-SILAS VALERIE L	ORANGE BEACH, AL	SOUTH CENTRAL PUBLIC HEALTH LEADERSHIP	\$400.00	State
SNAZELLE TERI	PORTLAND, OR	APHL LRN NATIONAL MEETING	\$1,350.00	Federal
	RICHMOND, VA	RICININE/ABRINE BY LC/MS/MS	\$1,436.00	Federal
SPEED DONNA EVORA	MADISON, WI	ASSN OF STATE & TERR PUB HLTH NUTRITION DIRECTORS	\$127.00	Federal
SRIVASTAVA KUMUD	COLUMBUS, OH	TB CHALLENGES FOR THE LABORATORY	\$416.00	Federal
STALLINGS NANCY C	DENVER, CO	CIFA/EPA SRF WORKSHOP	\$1,265.00	Federal
STEWART SHERWIN LEWIS	SEATTLE, WA	ACCESS 08 BUILDING A TOBACCO FREE-FUTURE	\$1,786.00	Other

Report on Official Travel

Name	Place	Purpose	Cost	Source
STRIDER MACK NEAL	EUGENE, OR	SMAT TRAILER EDUCATION	\$1,597.00	Federal
STRINGFELLOW SANDRA	RICHLAND, WA	HANDS ON RADIOCHEMISTRY TRAINING COURSE	\$2,192.00	Other
	MONTGOMERY, AL	RADIOCHEMISTRY TRAINING	\$896.00	Other
	HILTON HEAD ISLE, SC	RADIOLOGICAL EMERGENCY RESPONSE COURSE	\$1,131.00	Other
SURKIN JOSEPH M	ATLANTA, GA	2007 PUBLIC HEALTH INFORMATION NETWORK CONFERENCE	\$1,112.00	Federal
	IN/MADISON.WI	SITE VISITS PIMS RFP	\$1,136.00	Federal
SUTTON VICTOR D	WASHINGTON, DC	COUNCIL ON EDUCATION FOR PUBLIC HEALTH	\$991.00	Federal
	WASHINGTON, DC	NATIONAL PREV AND HEALTH PROMOTION SUMMIT	\$695.00	Federal
	DENVER, CO	PHHS BLOCK GRANT COOR ANNUAL SUMMIT	\$1,171.00	Federal
	LITTLE ROCK, AR	SOUTHERN OBESITY SUMMIT	\$763.00	Federal
TAYLOR DIETRICK TERRYCE	CHICAGO, IL	NATIONAL STD PREVENTION CONFERENCE	\$1,953.00	Federal
TAYLOR JANICE K	HOUSTON, TX	INTRO TO STD INTERVENTION	\$2,039.00	Federal
TAYLOR JASON LEE	FAIRHOPE, AL	WETLAND IDENTIFICATION & DELINEATION COURSE	\$296.00	State
TERRY PATRICIA	WASHINGTON, DC	NATL BIRTH DEFECTS PREVENTION MEETING	\$1,643.00	Other
THOMAS EVA G	BALTIMORE, MD	ANNUAL RYAN WHITE DATA REPORT	\$1,132.00	Federal
THOMAS HAL LESTER	BATON ROUGE, LA	DAIRY FARM SANITATION & INSPECTION COURSE	\$555.00	Other
THOMAS KIWANA VALESIA	MONTGOMERY AL	COURSE FOR RADIOANALYTICAL LABORATORY PERSONNEL	\$1,852.00	Other
	ROSWELL, GA	ENVIRONMENTAL RADIOCHEMISTRY COURSE	\$1,847.00	Other
THOMPSON ED	ST. LOUIS, MO	ASTHO MEETING	\$1,427.00	State
TILLOTSON DIANA S	BIRMINGHAM, AL	NUTRITION FOR INFANTS, CHILDREN, ADOLESCENTS	\$871.00	Federal
TRAVNICEK ROBERT G	AUSTIN, TX	PREVENTIVE MEDICINE 2008 CONFERENCE	\$1,005.00	State
UNDERWOOD RAMONA F	ATLANTA, GA	2007 PUBLIC HEALTH INFORMATION NETWORK CONFERENCE	\$987.00	Federal
VARGAS-BODAS RODOLFO L	MINNEAPOLIS, MN	NATIONAL CONFERENCE ON TOBACCO OR HEALTH	\$1,278.00	Federal
	RALEIGH, NC	SUDAAN DESCRIPTIVE PROCEDURES COURSE	\$1,250.00	Federal
VARNADO WENDY CAROL	METAIRIE, LA	LOUISIANA MOSQUITO CONTROL ASSN	\$581.00	Federal
VEAZEY CRYSTAL C	MIAMI, FL	ELIMINATING LEAD POISONING IN REGION IV	\$914.00	Federal
VINCE MARY JAN	NEW ORLEANS, LA	SOUTH CENTRAL PUBLIC HEALTH LEADERSHIP	\$300.00	State
WALLACE JANIE	ST. LOUIS, MO	2008 APHL ANNUAL MEETING	\$1,235.00	Federal
WARD CHARLES JOSEPH	WASHINGTON, DC	HEALTHCARE PREP MEETING ESAR VHP PROG	\$1,603.00	Federal
	ANNISTON, AL	NIMS IMP WORKSHOP FOR HEALTHCARE	\$74.00	Federal
	ORLANDO, FL	REGION IV ESF 8 WORKSHOP	\$1,015.00	Federal
WASHINGTON MCARTHUR	WASHINGTON, DC	US CONSUMER PRODUCT SAFETY COMM FOR REG	\$1,047.00	State
WELCH STANLEY RAY	MOBILE, AL	FDA SOUTHEAST REGIONAL MILK SEMINAR	\$524.00	Other
	NEW ORLEANS, LA	SOUTH CENTRAL PUBLIC HEALTH LEADERSHIP	\$69.00	State
WELCH SUSAN B	CHARLESTON, SC	REG IV SNS PREPAREDNESS PLAN WORKSHOP	\$1,601.00	Federal
	ORANGE BEACH, AL	SOUTH CENTRAL PUBLIC HEALTH LEADERSHIP	\$10.00	Federal
WESTON JAMES O	SPANISH FORT, AL	HYDRIC SOILS WORKSHOP FOR NATURAL RESOURCE MANAGE	\$381.00	State
WILBERT DAPHNE P	DALLAS, TX	BASIC ICF/MR SURVEYOR TRAINING COURSE	\$1,230.00	Federal
	CULVER CITY, CA	BASIC LONG TERM CARE FACILITY SURVEYOR COURSE	\$1,765.00	Federal
WILDER SHIRLEY FAYE	TAMPA, FL	MCH LEADERSHIP SKILLS TRAINING INSTITUTE	\$290.00	Federal
WILLARD AMY L	MONTGOMERY, AL	ALABAMA-MISSISSIPPI SECTION OF AWWA 2008	\$367.00	Federal
	NEW ORLEANS, LA	ASDWA SECURITY COORDINATORS WORKSHOP	\$766.00	Federal
WILLIAMS ALISA DIANE	MOBILE, AL	2008 ALABAMA-MISSISSIPPI HURRICANE CONFERENCE	\$679.00	Other
	BETHESDA, MD	NAEMSO MID YEAR .EMSC GRANTEE MEETING	\$1,767.00	Federal
	ORLANDO, FL	REGION IV ESF 8 WORKSHOP	\$1,058.00	Other

Report on Official Travel

Name	Place	Purpose	Cost	Source
WILLIAMS ANGELIA D	WASHINGTON, DC	HRSA HEALTH PROF ALL PROG MEETING	\$1,051.00	State
WILLIAMS KENNETH B	PORTLAND, OR	LIFESAVERS 2008	\$510.00	Federal
WILLIAMS SHERRY SUE	CLEARWATER, FL	BASIC HOME HEALTH MEETING	\$1,441.00	Federal
WILLIS CHRISTINA	ATLANTA, GA	ANALYSIS OF VOC'S BY GC/MSD	\$797.00	Federal
WINN LATANYA MARIA	NEW ORLEANS, LA	MS/LA/AL RESTAURANT FOOD SERVICES EXPO	\$99.00	State
WINTER AMY W	SAN DIEGO, CA	ILCA ANNUAL CONFERENCE	\$1,454.00	Federal
	ARLINGTON, VA	NATL SAFETY PLAYGROUND SAFETY INST CERT	\$204.00	Federal
WINTERS GWENDOLYN P	MONTGOMERY, AL	ALABAMA CAMPAIGN TO PREVENT TEEN PREGNANCY	\$528.00	Federal
WOMBLE DONNA B	HASBROUCK HEIGHTS, NJ	BASIC END REAGE RENAL DISEASE SURVEYPR TRAINING	\$1,564.00	Federal
	BALTIMORE, MD	ESRD/STAR TRAINING	\$1,552.00	Federal
WOODS JOHN A JR	BATON ROUGE, LA	DAIRY FARM SANITATION & INSPECTION COURSE	\$815.00	Other
WOODS JULIA S	ALBUQUERQUE, NM	NATIONAL NASCSA CONFERENCE	\$696.00	Other
	HOUSTON, TX	PCCA ASEPTIC TECHNIQUE COMPOUNDING COURSE	\$496.00	Other
	JERSEY CITY, NJ	PRO. HAART ADHERENCE PHARMACISTS ROLELOGY	\$1,111.00	Federal
WORTHAM CHERE LEVETTE	NEW ORLEANS, LA	MS/LA/AL RESTAURANT FOOD SERVICES EXPO	\$78.00	State
YOUNG TIFFANIE	ATLANTA, GA	NBCCEDP RECRUITMENT TRAINING MEETING	\$1,006.00	Federal
YOUNGBLOOD DELLA LENE	JACKSONVILLE, FL	CONFERENCE ON RADIATION CONTROL	\$1,140.00	Federal
	ATLANTA, GA	EPA REGION 4 RADON MEETING	\$1,270.00	Federal
	MURFREESBORO TN	RADON MITIGATION TRAINING	\$1,074.00	Federal
	ATLANTA,GA	REGION 4 SPRING RADON MEETING	\$1,126.00	Other
ZHANG LEI	WASHINGTON, DC	APHA ANNUAL MEETING	\$1,500.00	Federal
	ORLANDO, FL	BEHAVIORAL RISK FACTOR SURVEILLANCE CONFERENCE	\$1,558.00	Federal
	ATLANTA, GA	MCH EPI ANNUAL CONFERENCE	\$903.00	Federal
	ALEXANDRIA, VA	MCH FEDERAL/STATE PARTNERSHIP MEETING	\$1,373.00	Federal
	ATLANTA, GA	MCH TITLE V BLOCK GRANT REVIEW	\$580.00	Federal
ZUBER ROZLYN ANNE	NEW ORLEANS, LA	SOUTH CENTRAL PUBLIC HEALTH LEADERSHIP	\$407.00	Federal
	ORANGE BEACH, AL	SOUTH CENTRAL PUBLIC HEALTH LEADERSHIP	\$244.00	Federal
			<u>\$449,809.00</u>	

Vehicle Inventory as of June 30, 2008

Vehicle	Model Year	Model	Use	Tag Number	Mileage on 6/30/08	Average Miles Per Year
Truck (Chevy)	1989	Suburban Van	Rad Health	S-10795	97,233	5,400
Truck (Chevy)	1991	Suburban Van	Rad Health	S-12576	112,166	7,000
Truck (Ford)	1995	Bronco	Motor Pool	S-15493	111,739	8,600
Truck (Ford)	1995	Cargo van	Postal Service	S-15595	136,860	10,500
Truck (GMC)	1997	Jimmy	Water Supply	G-02714	97,240	8,850
Truck (GMC)	1997	Jimmy	Water Supply	G-02715	108,544	10,000
Truck (Ford)	2001	Passenger Van	Motor Pool	G-17775	64,745	10,000
Truck (Ford)	2001	Passenger Van	Motor Pool	G-17776	112,161	16,000
Other (Ford)	2001	Motor Home	STD	G-18672	51,513	7,500
Other (Ford)	2002	RV	EMS	G-23821	17,160	3,000
Truck (Ford)	2004	Cargo Van	Motor Pool	G-29683	53,125	13,300
Truck (GMC)	2004	Pickup 1/2 Ton	Maintenance	G-30526	8,311	2,100
Truck (Dodge)	2004	Dodge Truck	EMS	G-30527	72,305	18,000
Truck (Chevy)	2005	Van Suburban	Rad Health	G-27772	26,387	9,000
Truck (Dodge)	2005	Passenger Van	Motor Pool	G-28953	91,310	30,500
Truck (Dodge)	2005	Passenger Van	Motor Pool	G-28954	94,810	31,500
Truck (Dodge)	2005	Passenger Van	Motor Pool	G-28955	63,802	21,250
Crown Vic (Ford)	2005	Sedan	Health Officer	G-33757	15,860	5,500
Truck (Dodge)	2005	Passenger	Motor Pool	G-33835	66,571	22,200
Truck (Dodge)	2005	Passenger	Motor Pool	G-33836	67,152	22,500
Truck (Dodge)	2005	Passenger	Motor Pool	G-33837	76,689	25,500
Truck (Ford)	2006	Cargo Van	Motor Pool	G-33899	15,424	8,000
Truck (Ford)	2006	Cargo Van	Motor Pool	G-33900	37,539	19,000
Truck (Dodge)	2006	Ram Quad	EMS	G-35669	28,784	14,500
Truck (Nissan)	2006	Titan Truck	Emer. Plan & Response	G-41499	32,396	16,000
Truck (Nissan)	2006	Titan Truck	Emer. Plan & Response	G-41500	46,524	23,000
Truck (Nissan)	2006	Titan Truck	Emer. Plan & Response	G-41501	43,434	22,000
Truck (Nissan)	2006	Titan Truck	Emer. Plan & Response	G-41502	47,116	23,500
Truck (Nissan)	2006	Titan Truck	Emer. Plan & Response	G-41503	54,395	27,000
Truck (Nissan)	2006	Titan Truck	Emer. Plan & Response	G-41504	30,259	15,000
Truck (Nissan)	2006	Titan Truck	Emer. Plan & Response	G-41505	29,500	15,000
Truck (Nissan)	2006	Titan Truck	Emer. Plan & Response	no tag	30,899	15,500
Truck (Nissan)	2006	Titan Truck	Emer. Plan & Response	no tag	36,666	18,000
Truck (Ford)	2007	Ford Truck	Rad Health	G-41628	18,946	19,000



MISSISSIPPI STATE DEPARTMENT OF HEALTH

HealthyMS.com

1-866-HLTHY4U (1-866-458-4948)