



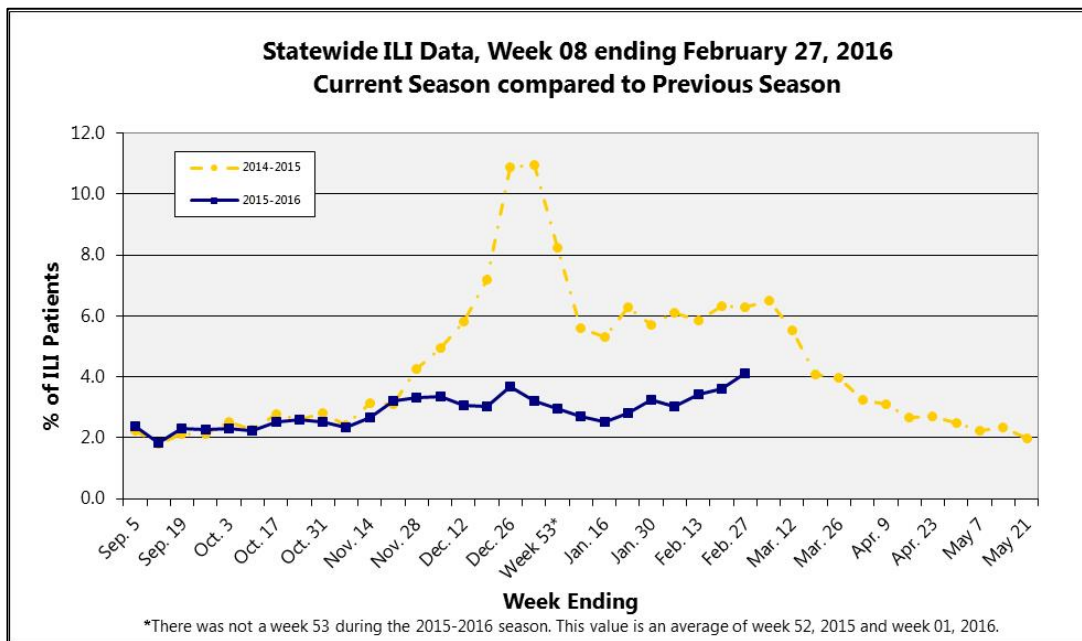
2015-2016 Influenza Report Week 08

February 21 – February 27, 2016

About our flu activity reporting

MSDH relies upon selected sentinel health practitioners across the state to report the percentage of total patient visits consistent with an influenza-like illness (ILI: fever of 100°F or higher AND cough and/or sore throat). Also, providers are supplied with specimen collection kits. Samples are submitted to the Mississippi Public Health Laboratory for influenza PCR testing. Reports are used to estimate the state's ILI rate and the magnitude of the state's influenza activity. Reports represent only the distribution of flu in the state, not an actual count of all flu cases statewide. **Information is provisional only and may change depending on additional reporting from sentinel providers.**

State ILI Surveillance



During week **08** (02/21/16-02/27/16), the overall state ILI rate (**4.1%**) **increased slightly** when compared to the previous week (**3.6%**), but was lower than this time

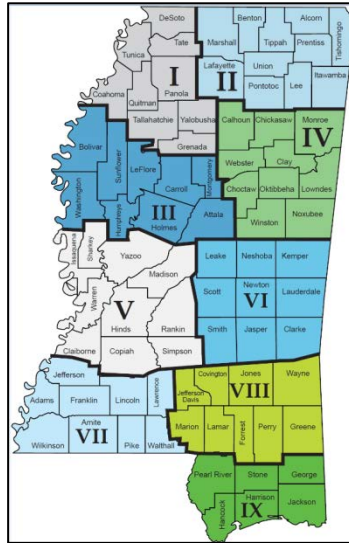
last year (**6.3%**). | [Figure 1](#)

Total number of patients treated by sentinel providers in the last three weeks. | **Table 1**

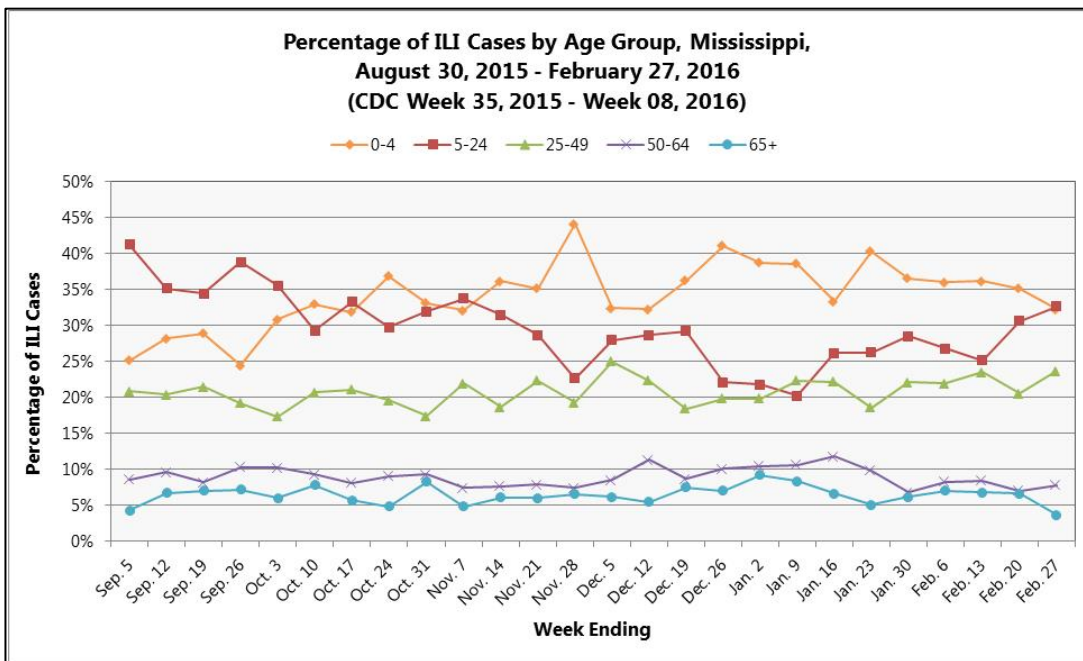
2015-2016 Influenza Season

CDC Week	Week Ending	Total patients	ILI symptoms	ILI Rate (%)
08	Feb. 27	19928	821	4.1%
07	Feb. 20	19609	711	3.6%
06	Feb. 13	19050	652	3.4%

During week **08**, **four** districts (1, 2, 4, and 8) had an increase in ILI activity, while **one** district (3) had a decrease. **Four** districts (5, 6, 7, and 9) remained about the same. *Information is provisional only and may change depending on additional reporting from sentinel providers.* | **Table 2**



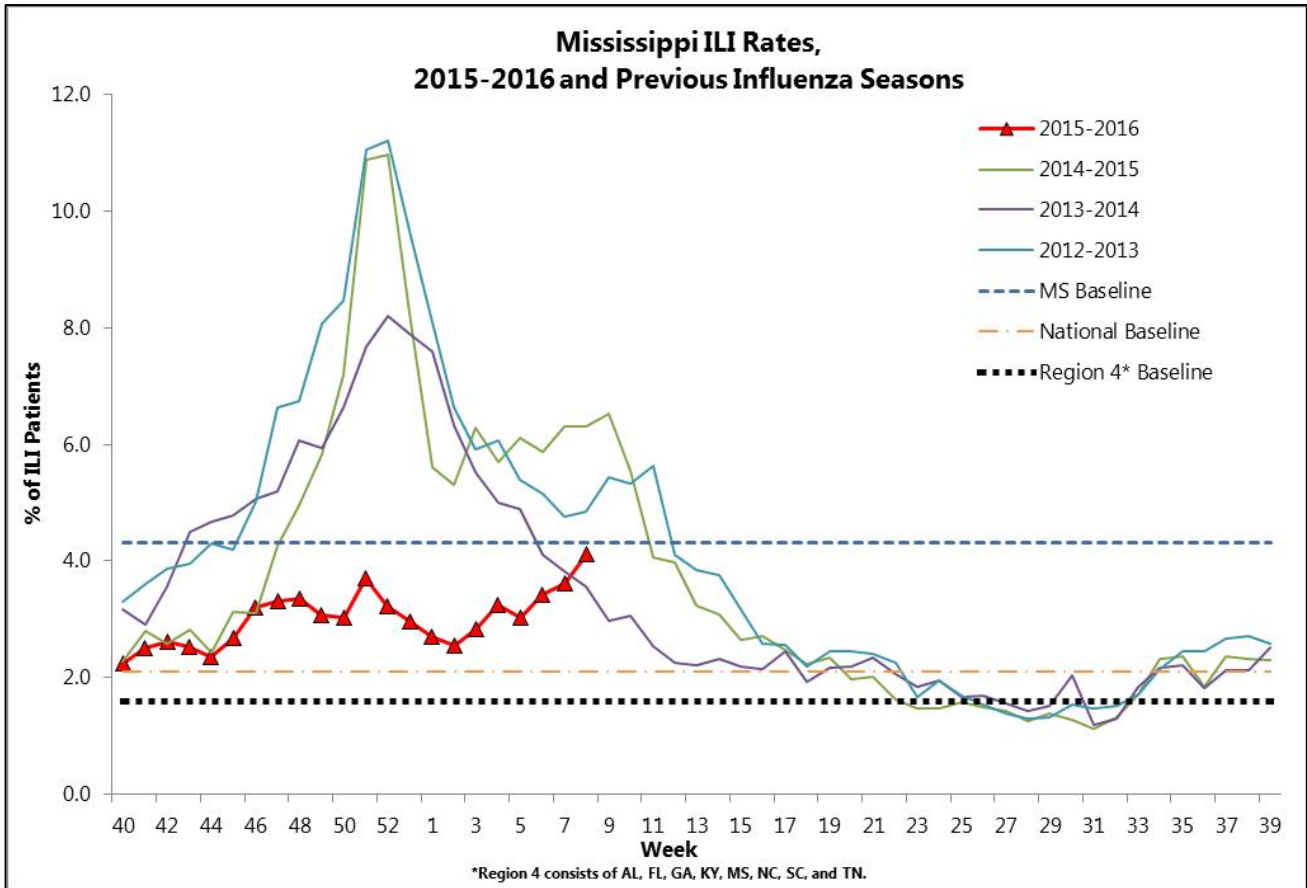
MSDH District ILI Rates (%) 2015-2016		
District	Week 07	Week 08
State	3.6	4.1
I	2.7	3.6
II	8.7	10.9
III	5.2	3.9
IV	3.2	4.3
V	3.0	3.5
VI	5.3	5.7
VII	3.7	3.7
VIII	2.4	3.0
IX	4.2	4.6



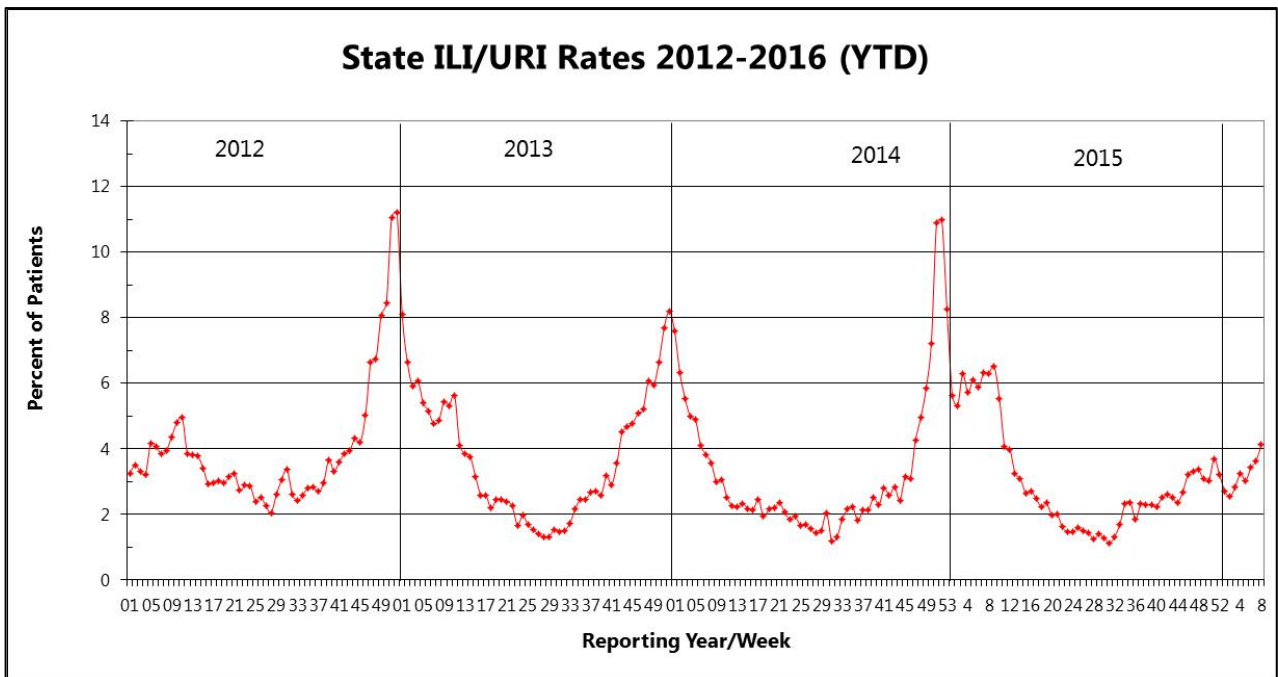
Overall, the percentage of reported ILI cases has been highest among those in the **0-4** and **5-24 years** of age groups. This trend continued during week **08**.

| [Figure 2](#)

The 2015-16 state ILI rate was **above** the national and Region 4 baselines, but was **comparable** to the state baseline for week 08. | [Figure 3](#)



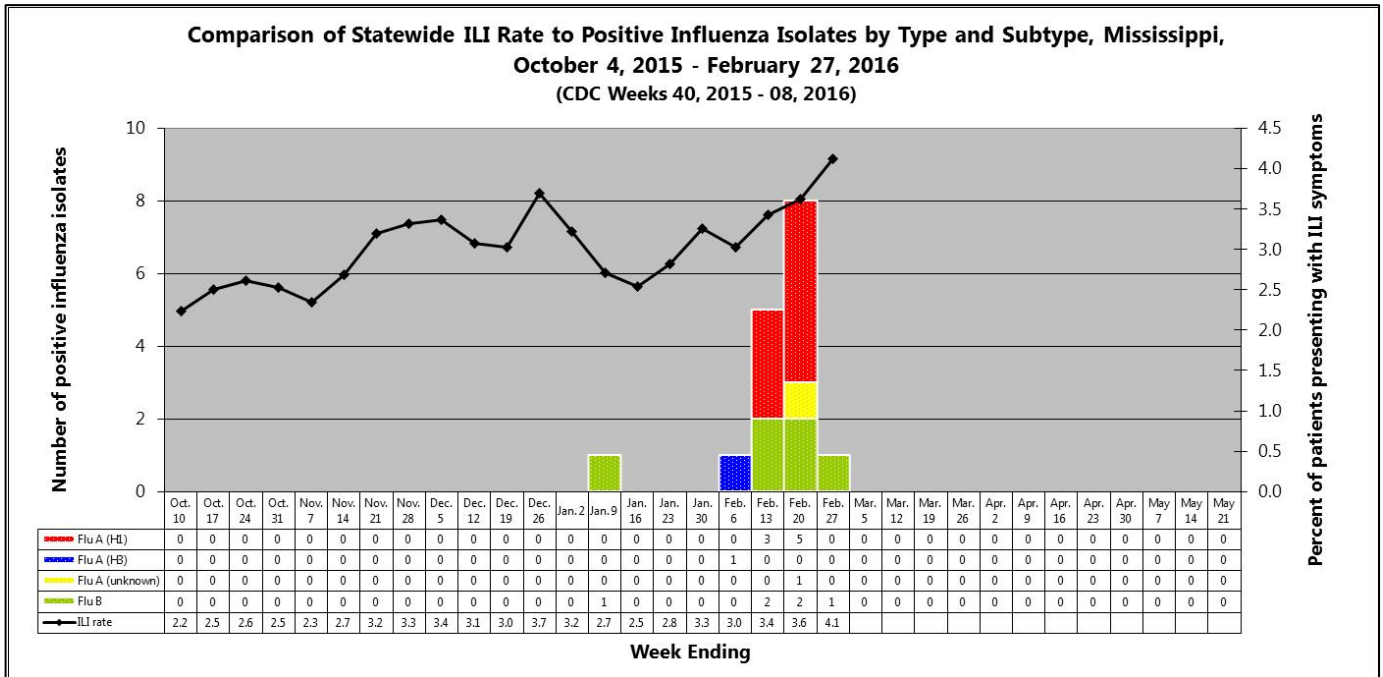
Mississippi ILI Rates 2012-2016 | [Figure 4](#)



Flu Testing Reports

From week **40** (week ending October 10th) through week **08** (week ending February 27th), 16 positive influenza samples were identified by MSDH. Eight (50%) samples were identified as influenza A (H1), one (6%) as influenza A (H3), one as influenza A (unknown) (6%), and six (38%) were identified as influenza B. | [Figure 5](#)

The influenza cases were identified from the following counties: Chickasaw (1), Covington (1), Forrest (1), Jones (1), Leake (1), Lee (1), Marshall (4), Monroe (2), Pontotoc (3), and Washington (1).



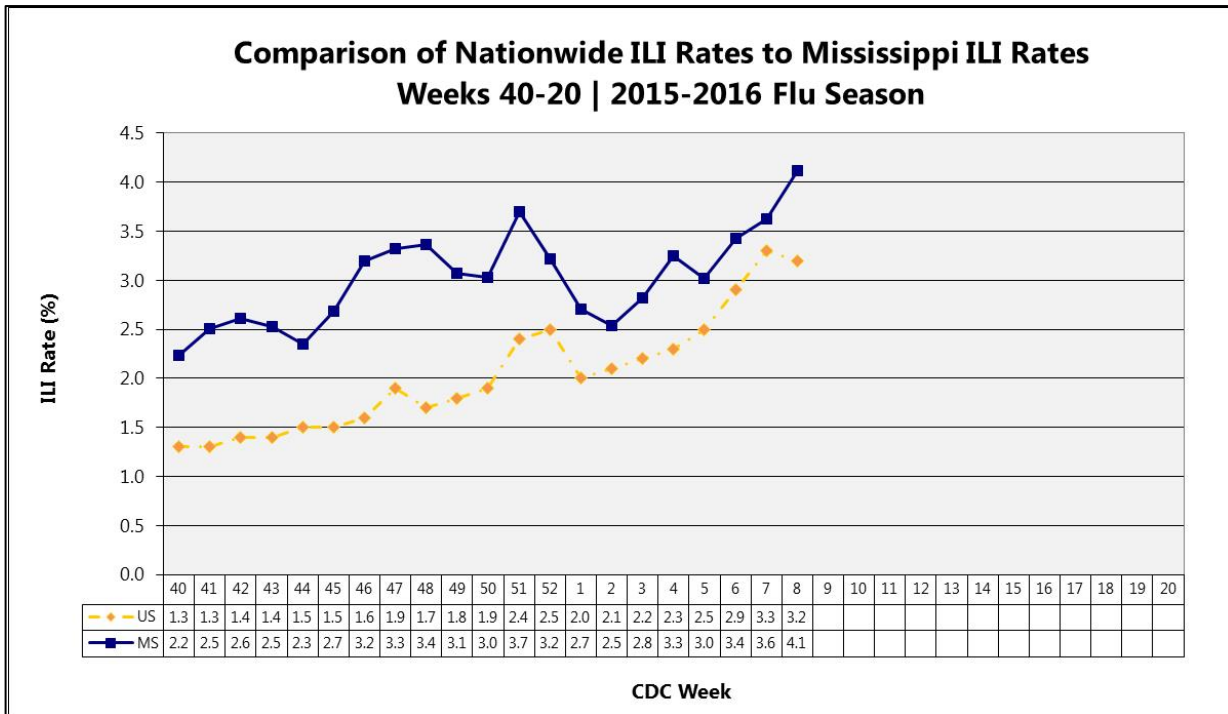
National and Mississippi Pediatric Mortality Surveillance

Nationally, **four** influenza-associated pediatric deaths were reported to CDC during week **08**. Two deaths were associated with an influenza A (H1N1)pdm09 virus and occurred during week 07 (week ending February 20th). One death was associated with an influenza A virus for which no subtyping was performed and occurred during week 08 (week ending February 27th) and one death was associated with an influenza B virus and occurred during week 07 (week ending February 20th). **Eighteen** influenza-associated pediatric deaths have been reported during the 2015-2016 season.

Mississippi has had **one** influenza-associated pediatric death reported during this influenza season. For additional information on influenza-associated pediatric deaths, please refer to the [CDC's FluView](#).

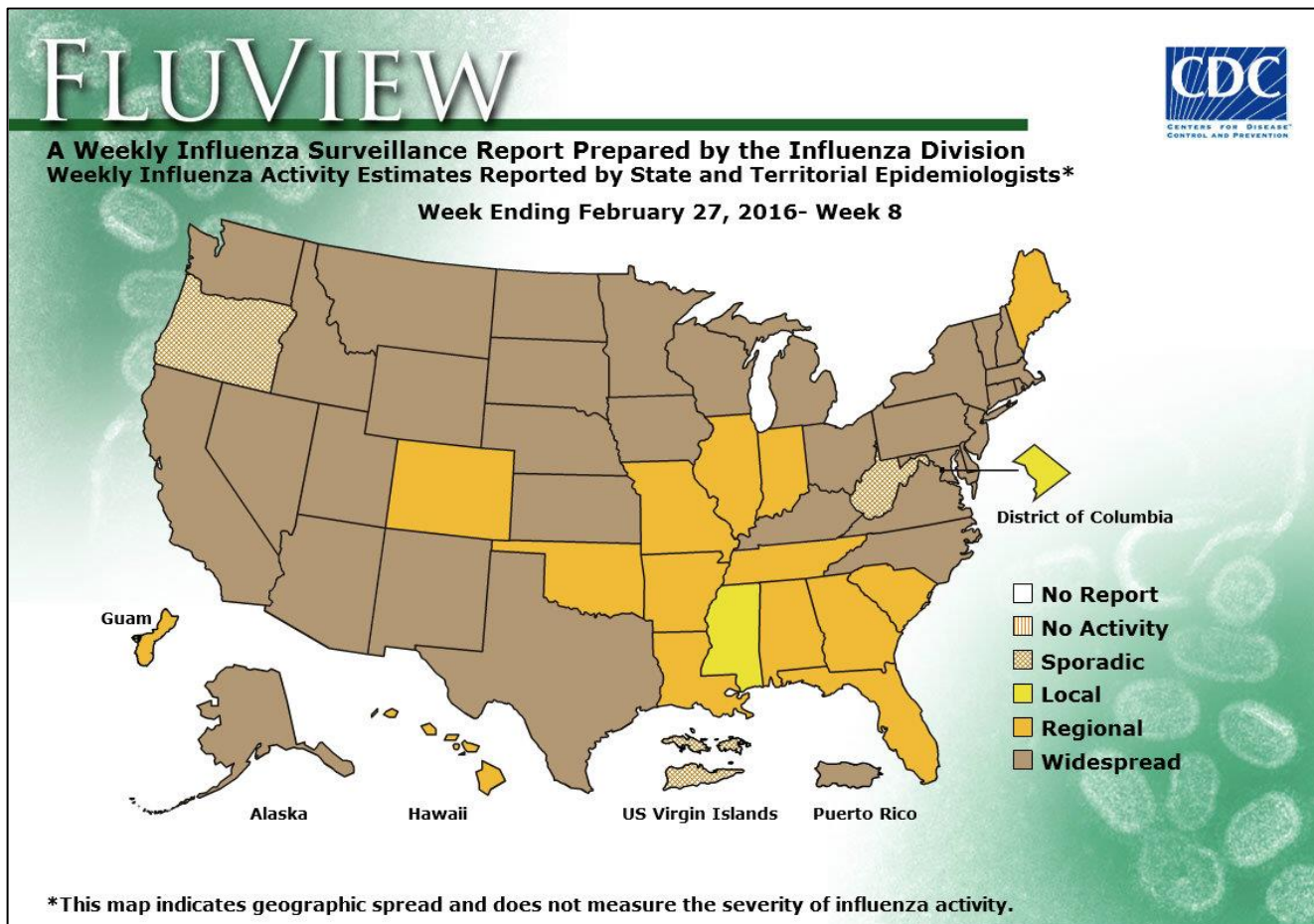
National ILI Surveillance

For week **08**, the MS ILI rate (4.1%) was **above** the national ILI rate (3.2%). | [Figure 6](#)



US ILI rates from the Centers for Disease Control and Prevention: <http://www.cdc.gov/flu/weekly/>.

During week **08**, influenza activity **remained elevated** in the United States.¹ | [Figure 7](#)



¹For up-to-date information on flu activity nationwide, please refer to the CDC’s website:
<http://www.cdc.gov/flu/weekly/fluactivitysurv.htm>.

Mississippi reported “**Local**” for the influenza activity during week **08**. | **Table 3**

Level of Flu Activity	Definition
No Activity	Overall clinical activity remains low and there are no lab confirmed cases.
Sporadic	Isolated cases of lab confirmed influenza in the state; ILI activity is not increased <u>OR</u> A lab-confirmed outbreak in a single institution in the state; ILI activity is not increased.
Local	Increased ILI within a single region AND recent (within the past 3 weeks) laboratory evidence of influenza in that region. ILI activity in other regions is not increased <u>OR</u> two of more institutional outbreaks (ILI or lab confirmed) within a single region AND recent (within the past 3 weeks) lab confirmed influenza in that region. Other regions do not have increased ILI and virus activity is no greater than sporadic in those regions
Regional	Increased ILI in at least 2 regions but fewer than half of the regions AND recent (within the past 3 weeks) lab confirmed influenza in the affected regions <u>OR</u> Institutional outbreaks (ILI or lab confirmed) in at least 2 regions but fewer than half of the regions AND recent lab confirmed influenza in the affected regions.
Widespread	Increased ILI and/or institutional outbreaks (ILI or lab confirmed) in at least half of the regions AND recent (within the past 3 weeks) lab confirmed influenza in the state.

Additional influenza information:

Centers for Disease Control and Prevention	http://cdc.gov/flu/
Centers for Disease Control and Prevention FluView	http://www.cdc.gov/flu/weekly/
Flu.gov	http://www.flu.gov/
MSDH Flu and Pneumonia	http://msdh.ms.gov/msdhsite/_static/14,0,199.html
World Health Organization FluNet	http://www.who.int/influenza/gisrs_laboratory/flunet/en/

Appendix

Figure 1

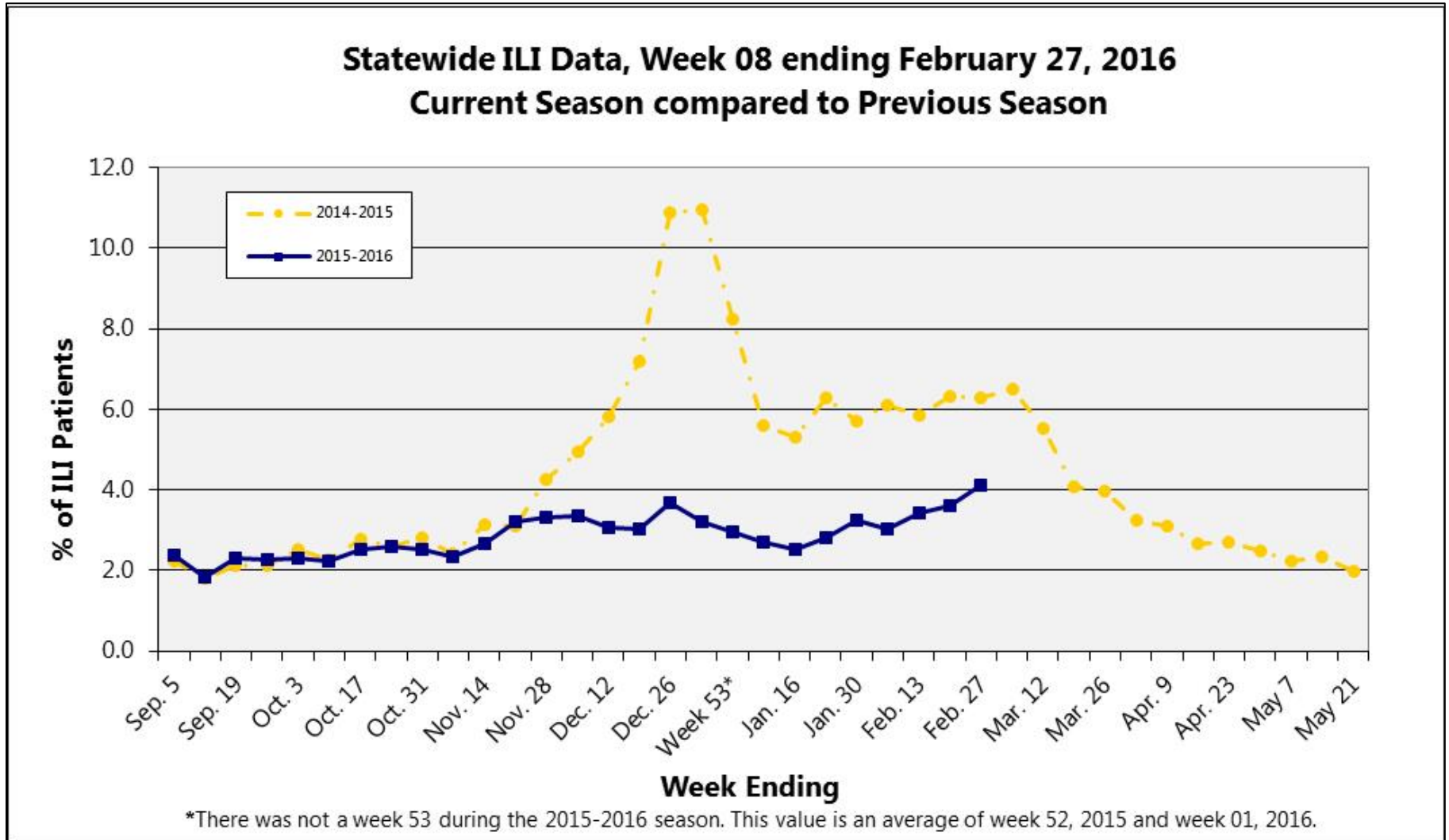


Figure 2

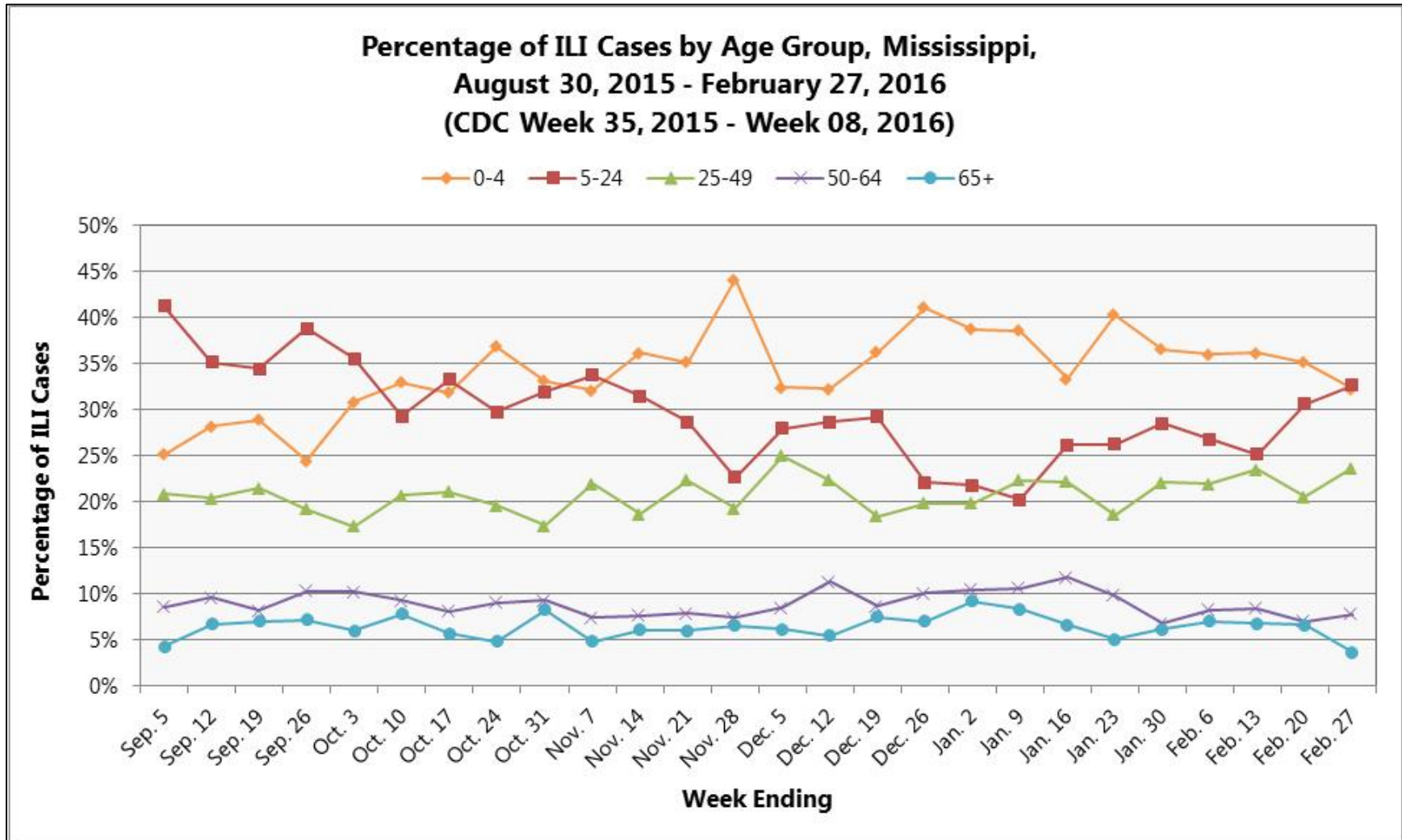


Figure 3

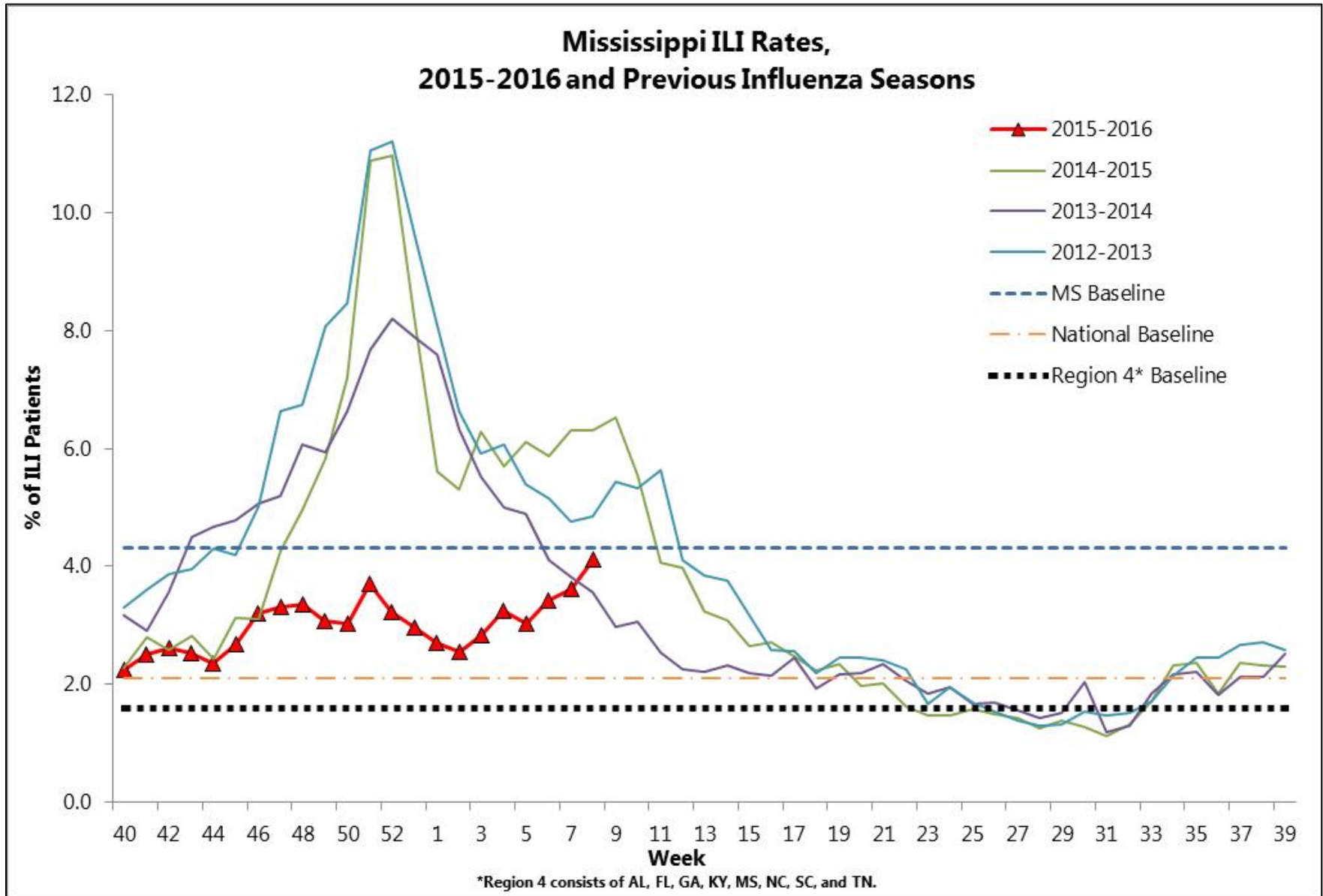


Figure 4

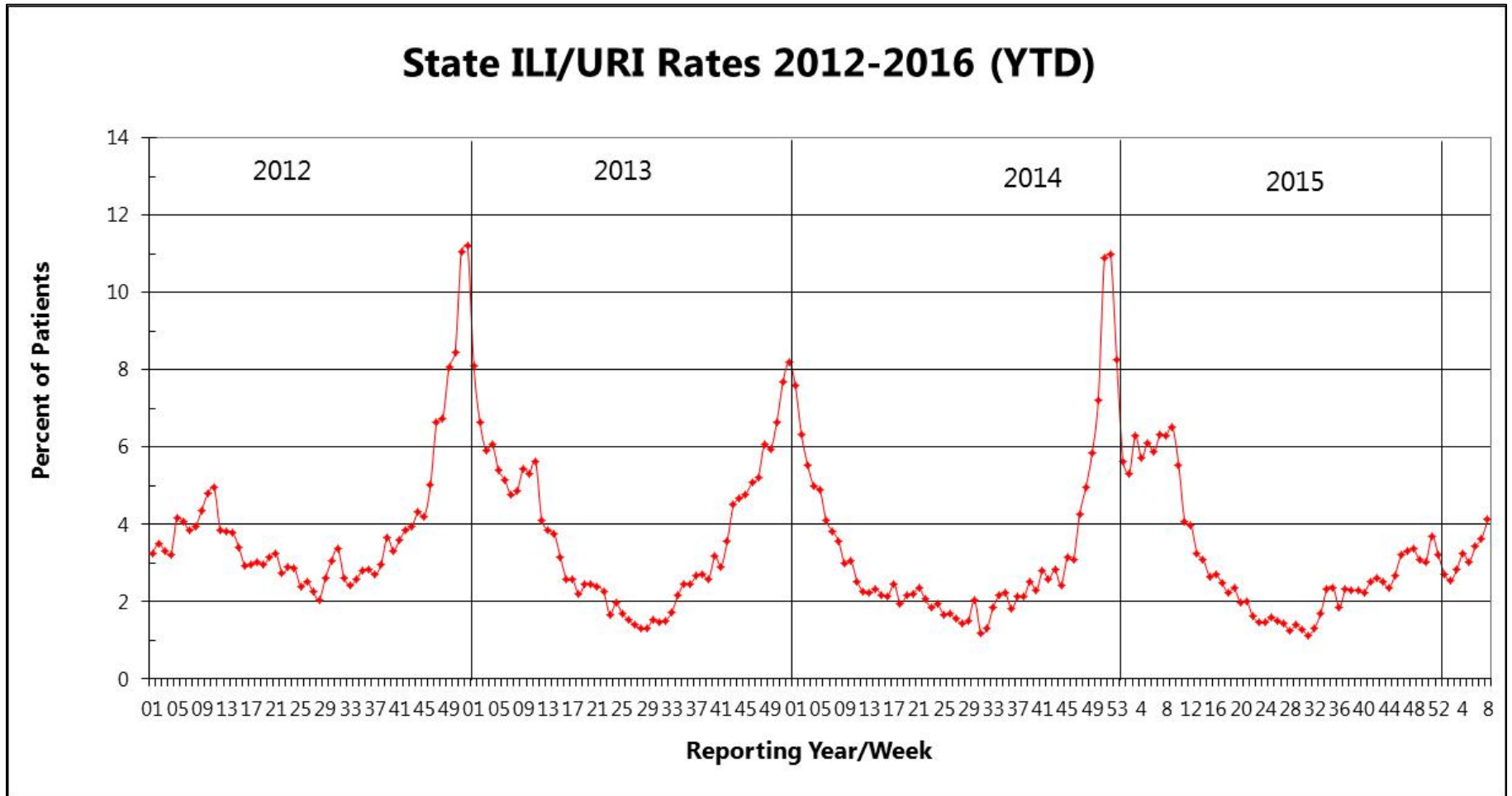


Figure 5

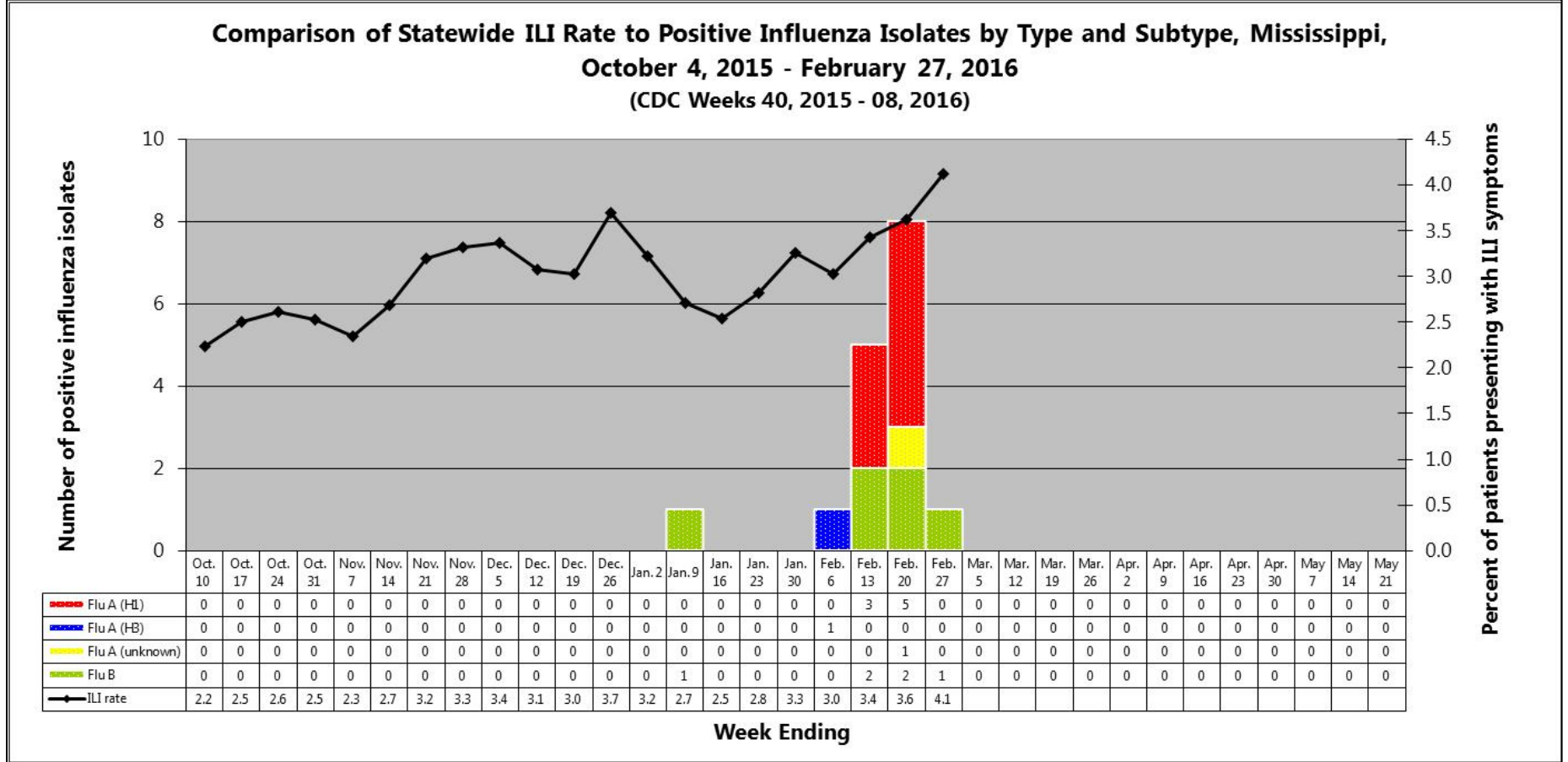


Figure 6

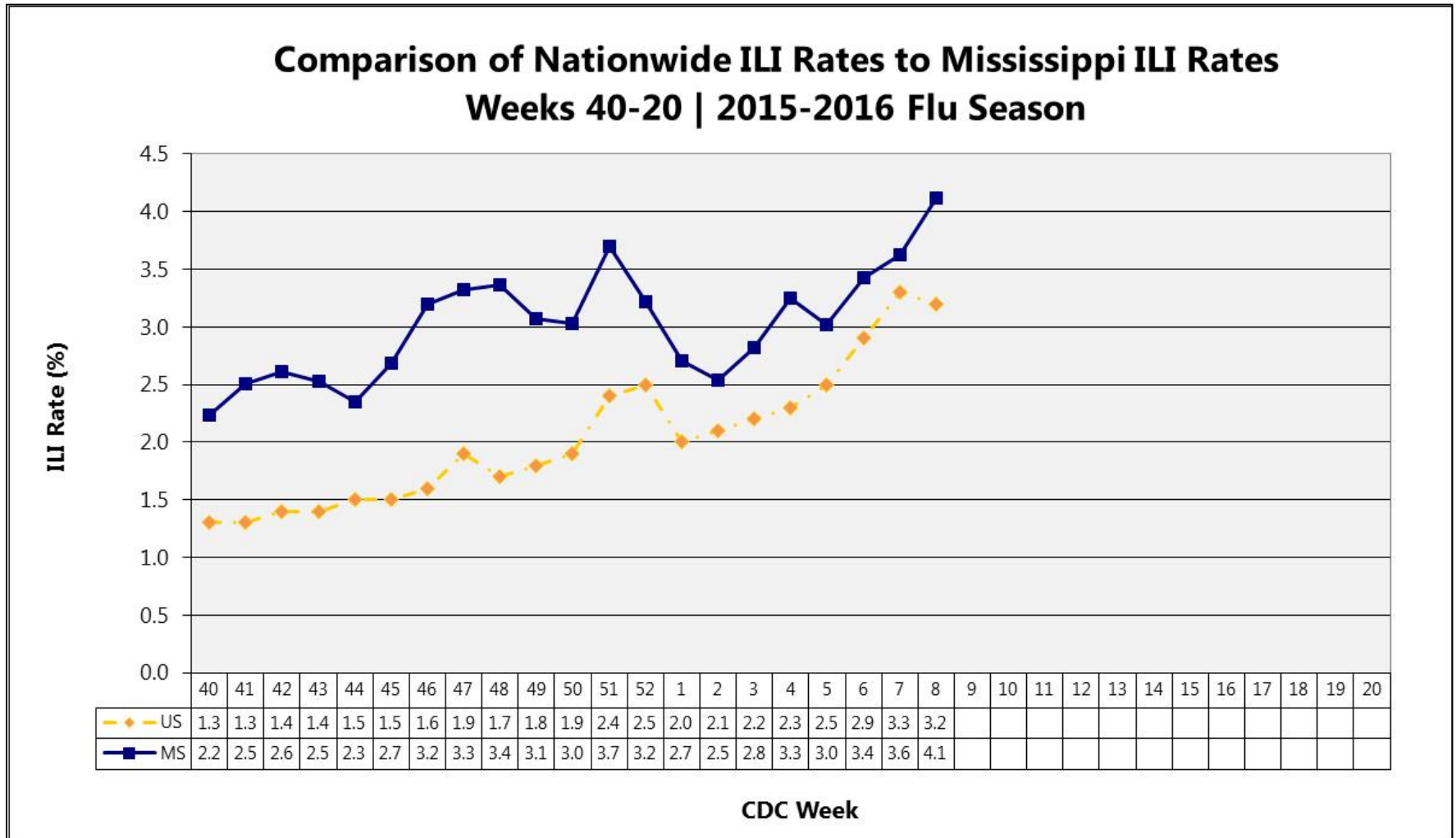


Figure 7

