



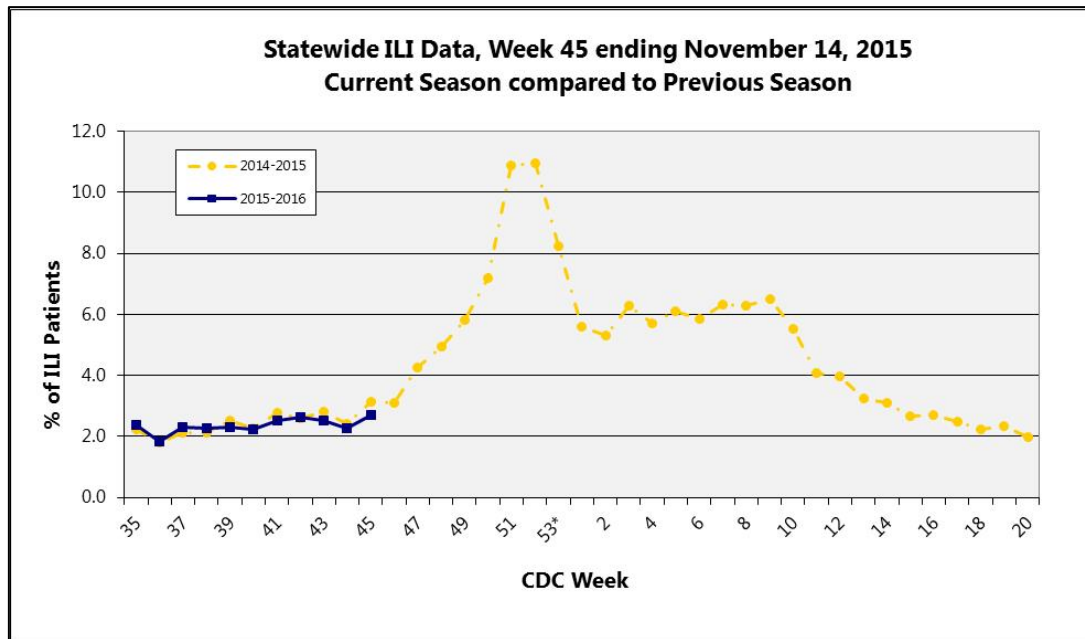
# 2015-2016 Influenza Report Week 45

November 8 – November 14, 2015

## About our flu activity reporting

MSDH relies upon selected sentinel health practitioners across the state to report the percentage of total patient visits consistent with an influenza-like illness (ILI: fever of 100°F or higher AND cough and/or sore throat). Also, providers are supplied with specimen collection kits. Samples are submitted to the Mississippi Public Health Laboratory for influenza PCR testing. Reports are used to estimate the state’s ILI rate and the magnitude of the state’s influenza activity. Reports represent only the distribution of flu in the state, not an actual count of all flu cases statewide. **Information is provisional only and may change depending on additional reporting from sentinel providers.**

## State ILI Surveillance



During week **45** (11/08/15-11/14/15), the overall state ILI rate (**2.7%**) was **comparable** to the previous week (**2.3%**), and to this time last year (**3.1%**).

| [Figure 1](#)

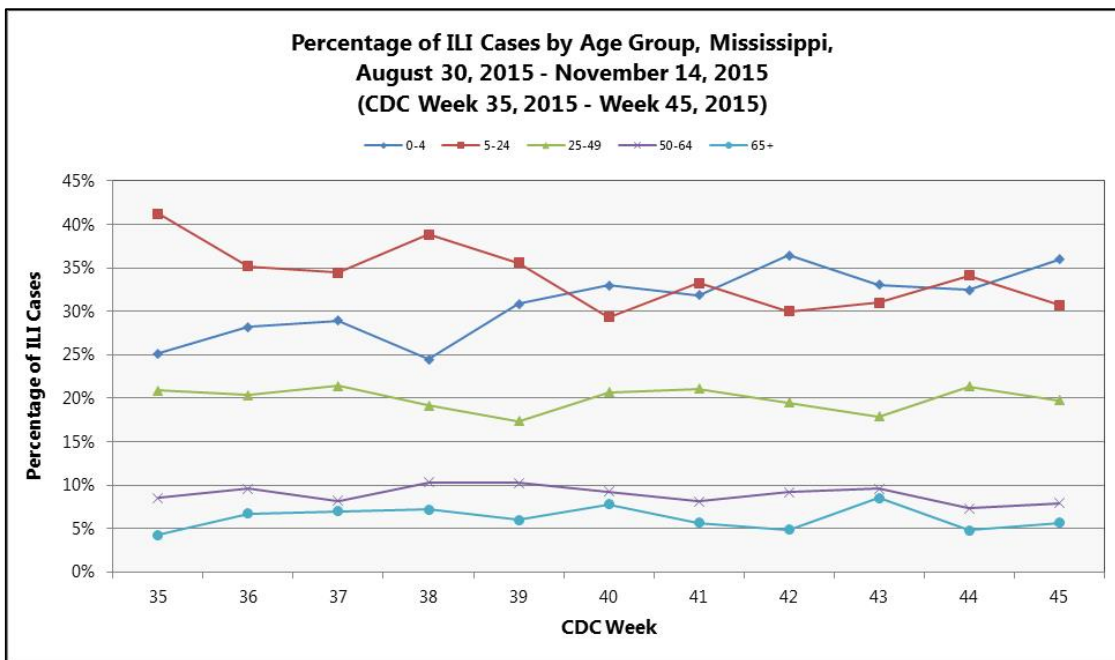
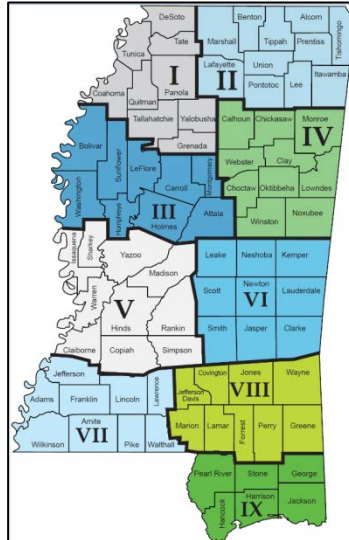
Total number of patients treated by sentinel providers in the last three weeks. | **Table 1**

### 2015-2016 Influenza Season

| CDC Week  | Week Ending    | Total patients | ILI symptoms | ILI Rate (%) |
|-----------|----------------|----------------|--------------|--------------|
| <b>45</b> | <b>Nov. 14</b> | <b>19,766</b>  | <b>531</b>   | <b>2.7%</b>  |
| 44        | Nov. 07        | 21,145         | 478          | 2.3%         |
| 43        | Oct. 31        | 19,153         | 481          | 2.5%         |

During week **45**, **four** districts (1, 3, 6, and 7) had an increase in ILI activity, while **two** districts (2 and 4) had a slight decrease. **Three** districts (5, 8, and 9) remained about the same. *Information is provisional only and may change depending on additional reporting from sentinel providers.* | **Table 2**

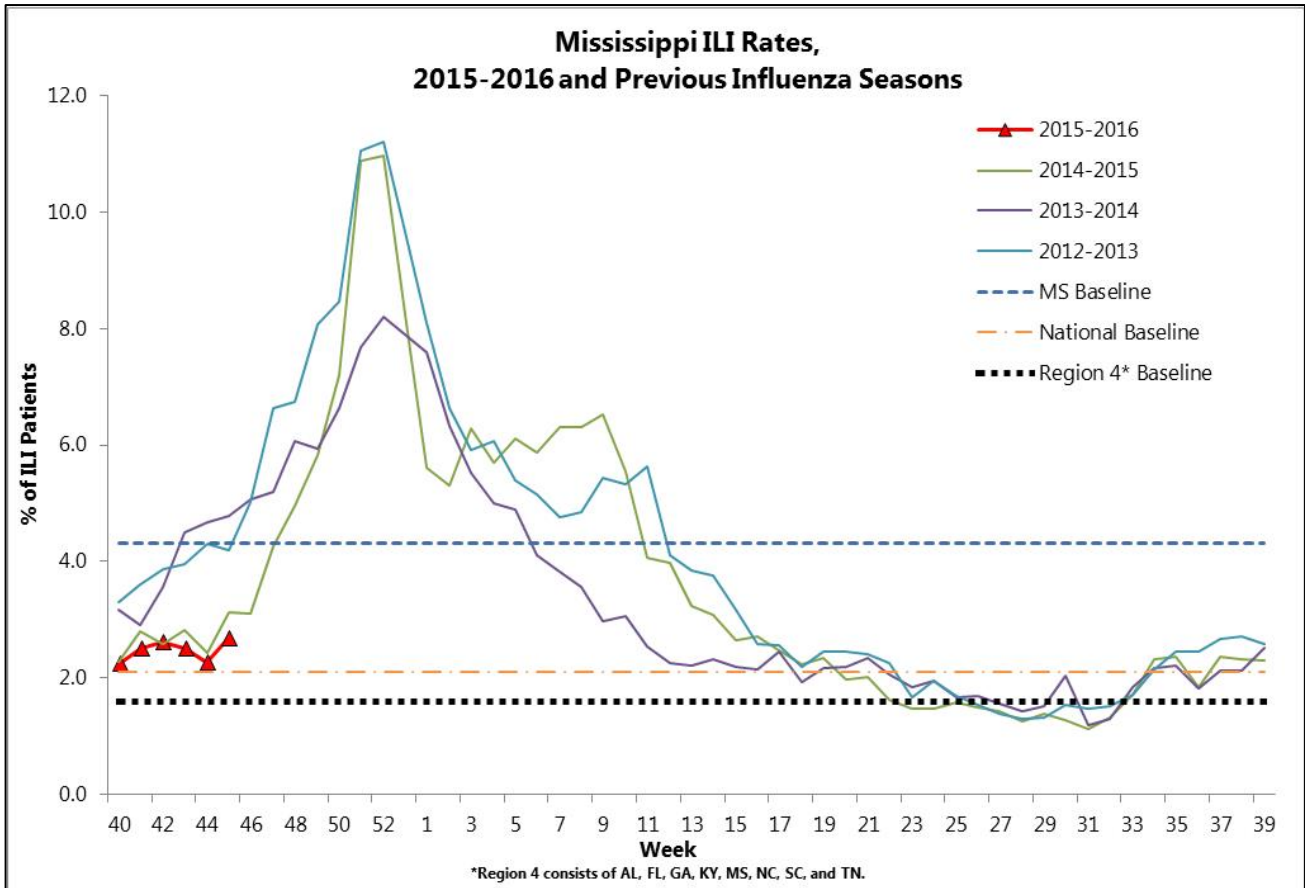
| MSDH District ILI Rates (%)<br>2015-2016 |         |         |
|--|---------|---------|
| District                                 | Week 44 | Week 45 |
| State                                    | 2.3     | 2.7     |
| I  | 1.8     | 3.1     |
| II                                       | 3.2     | 2.5     |
| III                                      | 2.6     | 4.5     |
| IV                                       | 1.9     | 1.3     |
| V  | 2.2     | 2.2     |
| VI                                       | 2.8     | 5.0     |
| VII                                      | 2.1     | 3.0     |
| VIII                                     | 1.1     | 1.3     |
| IX                                       | 3.2     | 3.6     |



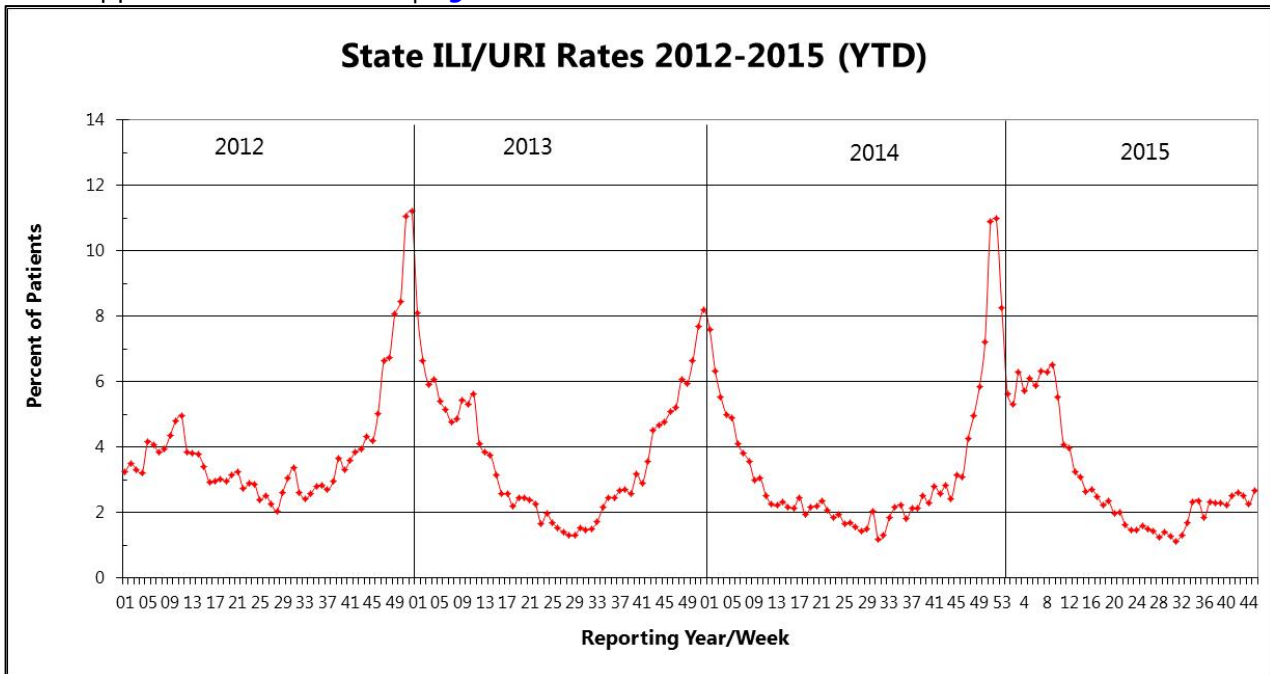
Overall, the percentage of reported ILI cases has been highest among those in the **5-24 years** of age group. However, during week **45**, the

percentage of cases was higher among those in the **0-4 years** of age group. | [Figure 2](#)

The 2015-16 state ILI rate was **above** the national and Region 4 baselines, but was **below** the state baseline for week 45. | [Figure 3](#)



Mississippi ILI Rates 2012-2015 | [Figure 4](#)



### Flu Testing Reports

During week **45** (week ending November 14<sup>th</sup>), there were no laboratory confirmed influenza cases identified by MSDH Public Health Laboratory.

### National and Mississippi Pediatric Mortality Surveillance

Nationally, **one** influenza-associated pediatric death was reported to CDC during week **45**. This death was associated with an influenza A virus for which no subtyping was performed and occurred during week 44 (week ending November 7<sup>th</sup>). **One** influenza-associated pediatric death has been reported during the 2015-2016 season.

Mississippi has had **no** influenza-associated pediatric deaths reported during this influenza season. For additional information on influenza-associated pediatric deaths, please refer to the [CDC's FluView](#).

### National ILI Surveillance

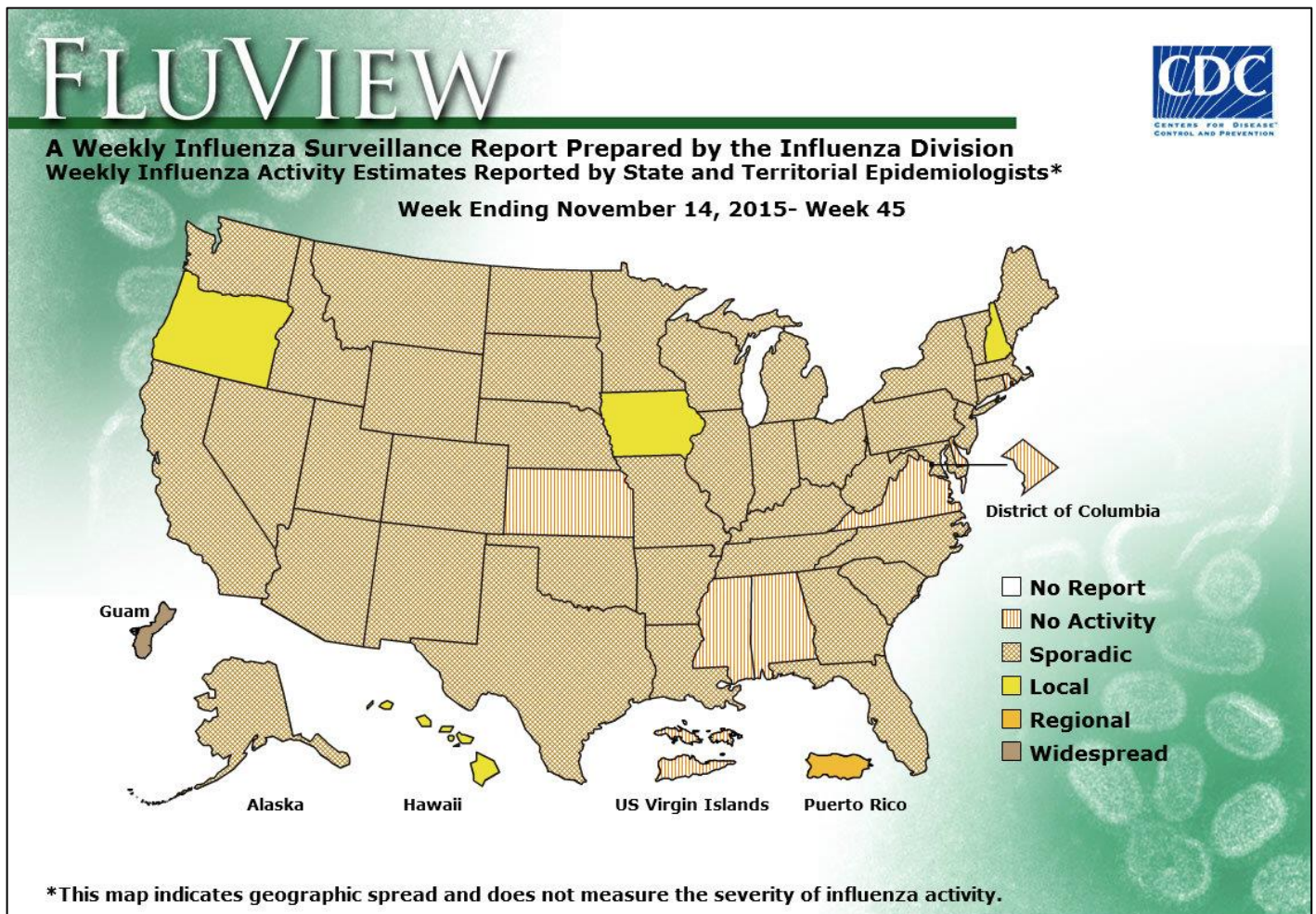
For week **45**, the MS ILI rate (2.7%) was **above** the national ILI rate (1.6%).

Mississippi reported **"No Activity"** flu activity for week **45**. | **Table 3**

| Level of Flu Activity | Definition   |
|-----------------------|--|
| <b>No Activity</b>    | Overall clinical activity remains low and there are no lab confirmed cases.  |
| <b>Sporadic</b>       | Isolated cases of lab confirmed influenza in the state; ILI activity is not increased <u>OR</u> A lab-confirmed outbreak in a single institution in the state; ILI activity is not increased.  |
| <b>Local</b>          | Increased ILI within a single region <b>AND</b> recent (within the past 3 weeks) laboratory evidence of influenza in that region. ILI activity in other regions is not increased <u>OR</u> two of more institutional outbreaks (ILI or lab confirmed) within a single region <b>AND</b> recent (within the past 3 weeks) lab confirmed influenza in that region. Other regions do not have increased ILI and virus activity is no greater than sporadic in those regions |
| <b>Regional</b>       | Increased ILI in at least 2 regions but fewer than half of the regions <b>AND</b> recent (within the past 3 weeks) lab confirmed influenza in the affected regions <u>OR</u> Institutional outbreaks (ILI or lab confirmed) in at least 2 regions but fewer than half of the regions <b>AND</b> recent lab confirmed influenza in the affected regions.  |
| <b>Widespread</b>     | Increased ILI and/or institutional outbreaks (ILI or lab confirmed) in at least half of the regions <b>AND</b> recent (within the past 3 weeks) lab confirmed influenza in the state.  |



During week **45**, influenza activity **increased slightly** in the United States.<sup>1</sup> | [Figure 5](#)



<sup>1</sup>For up-to-date information on flu activity nationwide, please refer to the CDC's website:  
<http://www.cdc.gov/flu/weekly/fluactivitysurv.htm>.

**Additional information:**

|  |   |
|--|---|
| Centers for Disease Control and Prevention         | <a href="http://cdc.gov/flu/">http://cdc.gov/flu/</a>   |
| Centers for Disease Control and Prevention FluView | <a href="http://www.cdc.gov/flu/weekly/">http://www.cdc.gov/flu/weekly/</a>   |
| Flu.gov  | <a href="http://www.flu.gov/">http://www.flu.gov/</a>   |
| MSDH Flu and Pneumonia                             | <a href="http://msdh.ms.gov/msdhsite/ static/14,0,199.html">http://msdh.ms.gov/msdhsite/ static/14,0,199.html</a>               |
| World Health Organization FluNet                   | <a href="http://www.who.int/influenza/gisrs_laboratory/flunet/en/">http://www.who.int/influenza/gisrs_laboratory/flunet/en/</a> |

## Appendix

Figure 1

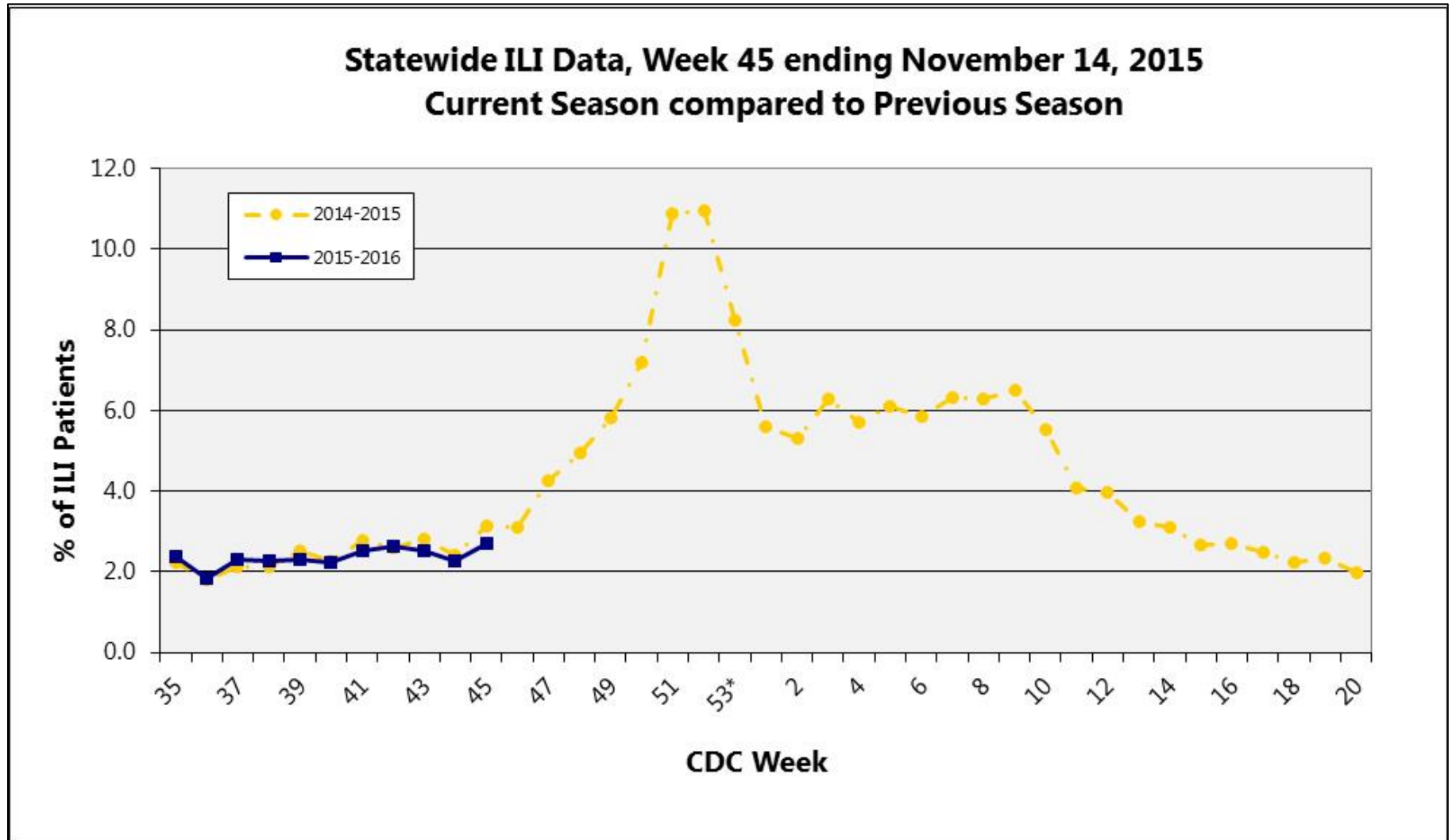
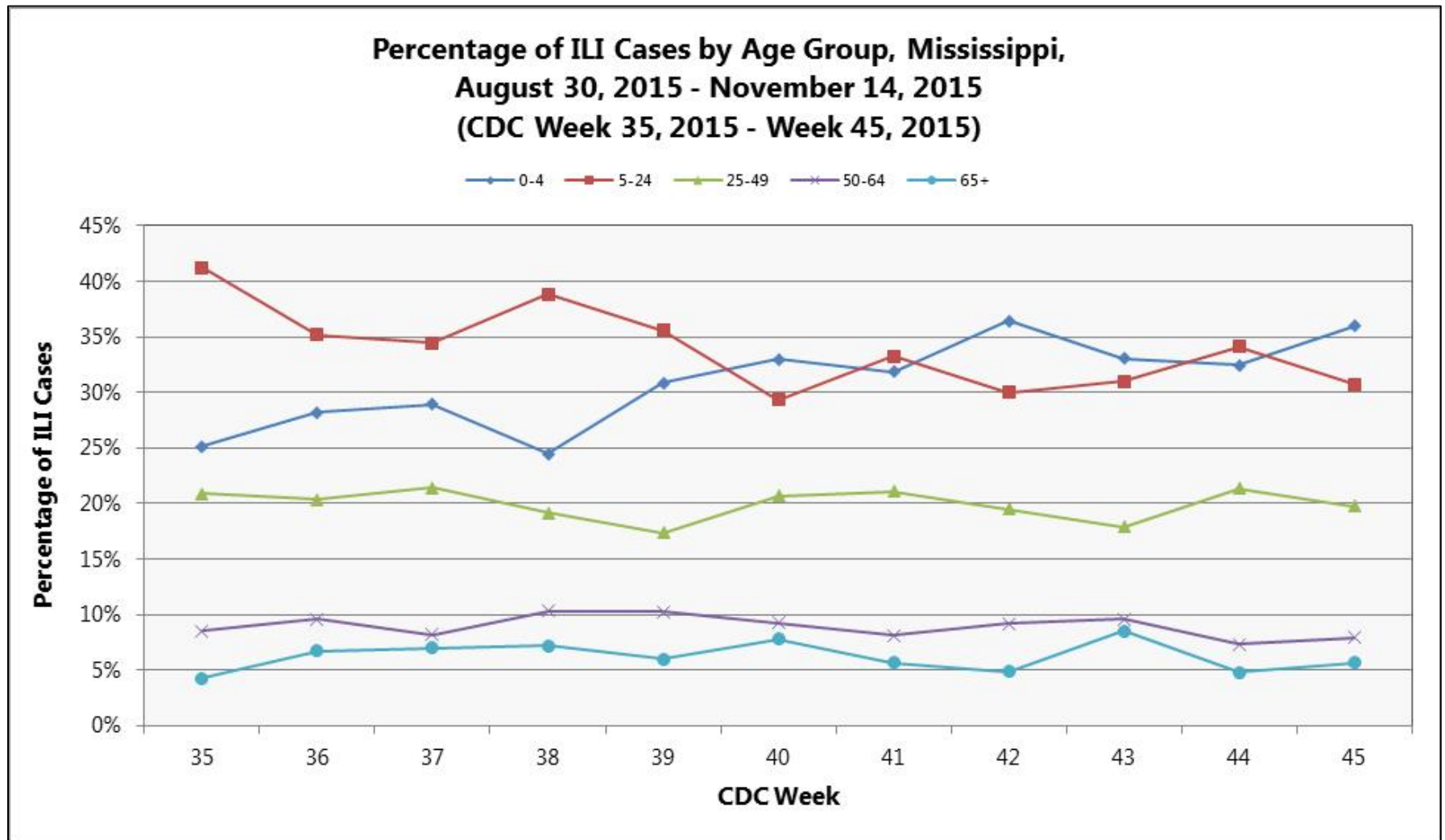
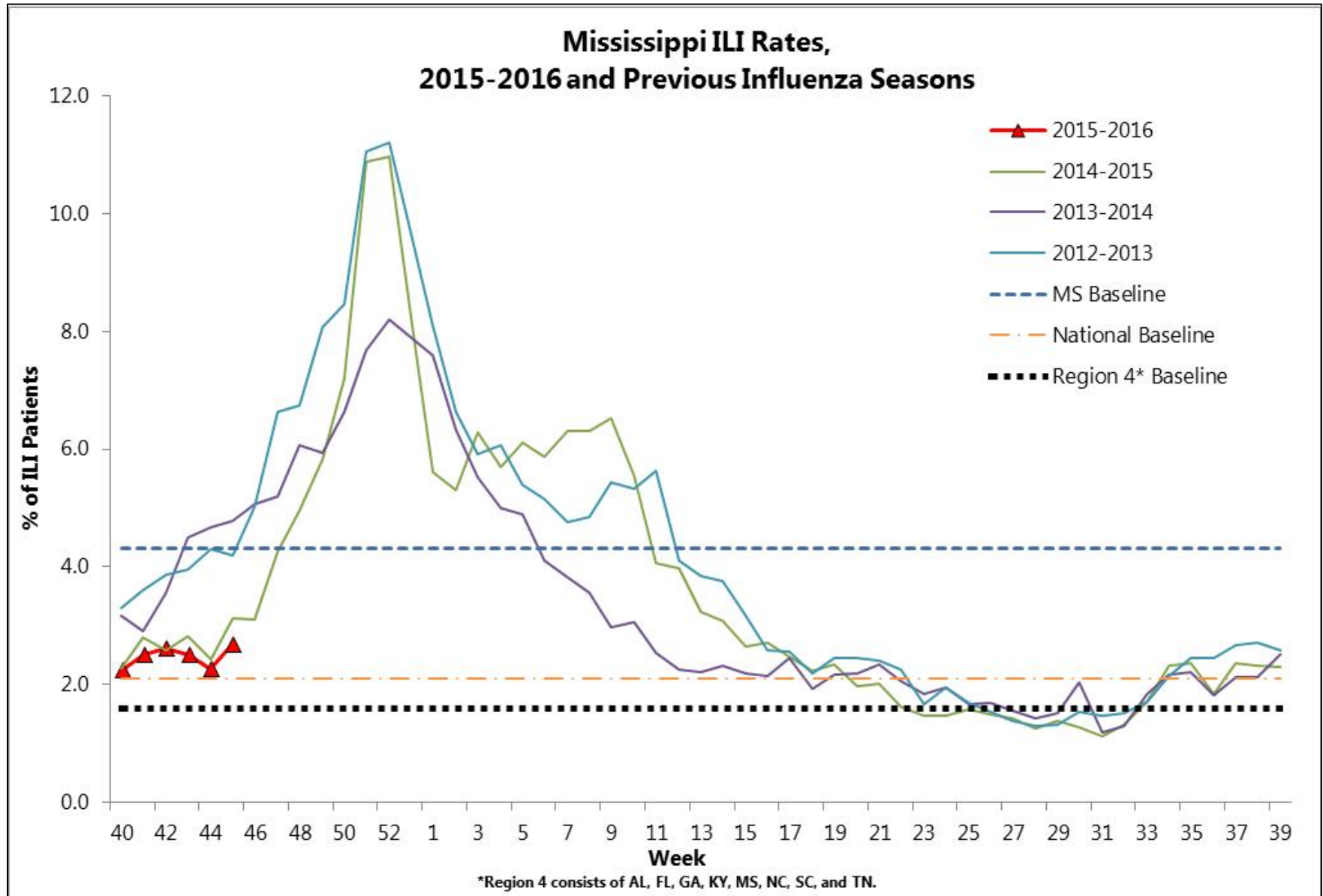


Figure 2



**Figure 3**





**Figure 4**

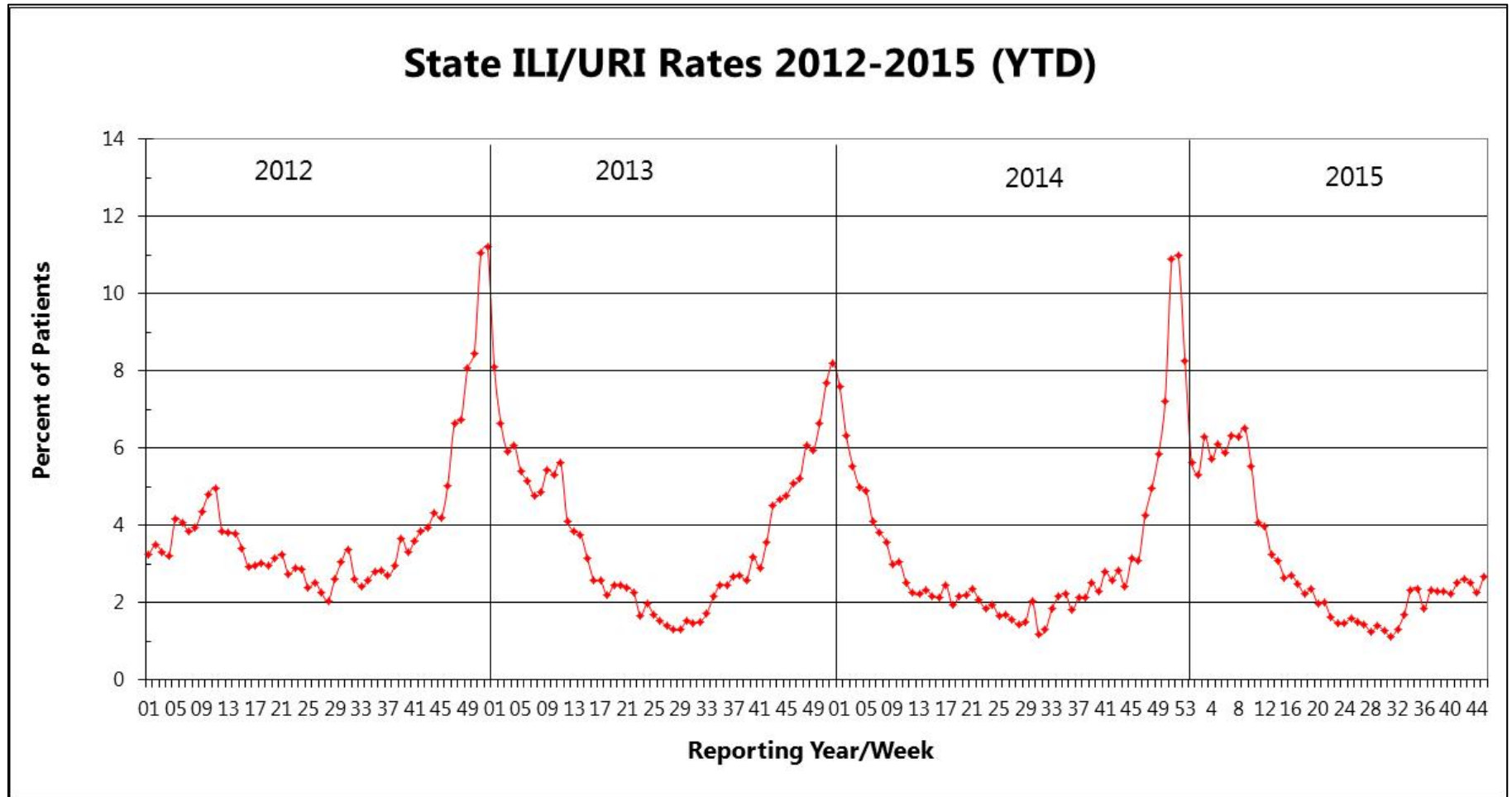


Figure 5

