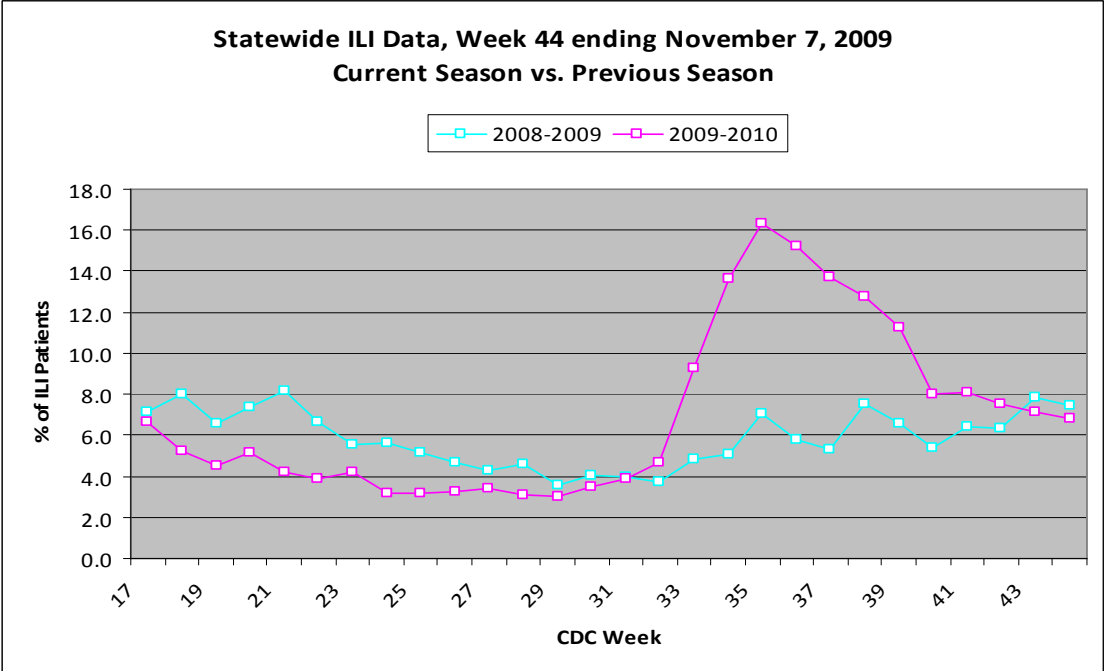
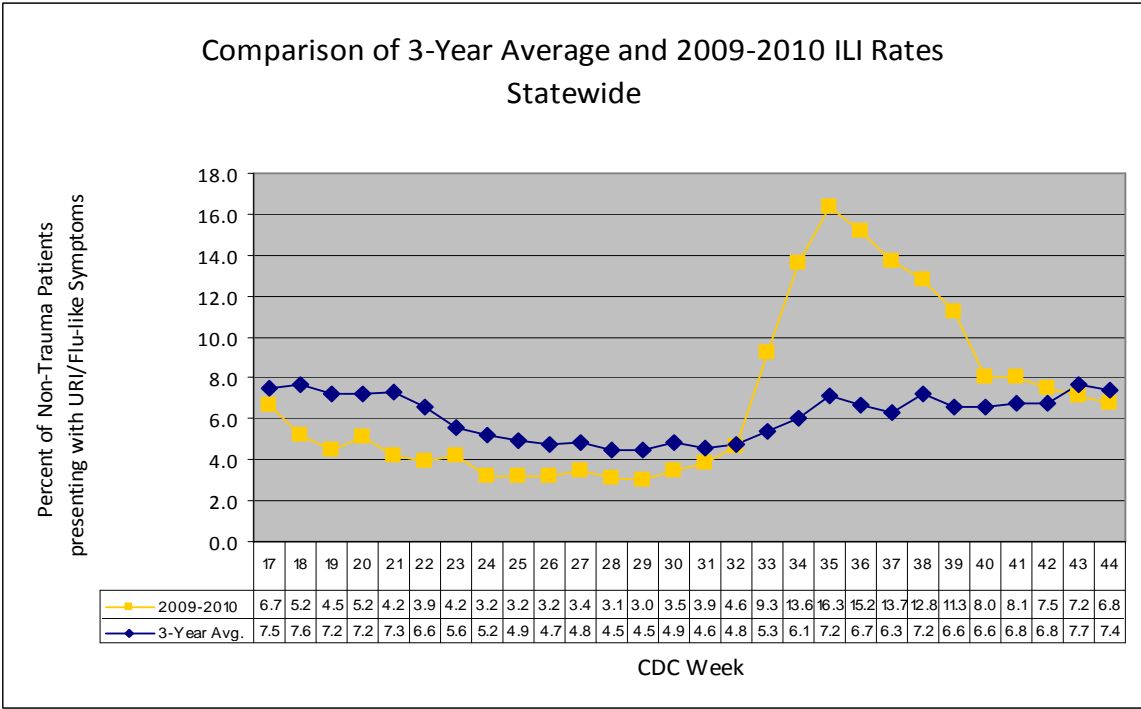


For week 44 (11/01/09- 11/07/09), the overall state ILI rate (6.8%) decreased slightly from last week (7.2%) and was lower than this time last year (7.4%).



New for the 2009-10 flu season is a comparison of 2009-10 ILI rates to the three-year average for each district and the state. The 2009-10 ILI rate for the state is below baseline for week 44.



During week 44, four districts (1, 3, 4, and 8) had a decrease in ILI activity, three districts (2, 6, and 9) had an increase, and two remained about the same (5 and 7).

To date, 2,632 flu specimens have been submitted for testing to the MSDH PHL since April 27th. 1,250 lab-confirmed novel H1N1 specimens have been reported to MSDH. This total includes 306 positives reported from outside labs. There have been a total of 17 reported flu deaths, 10 that were confirmed H1N1. The positive cases and deaths were from the following counties:

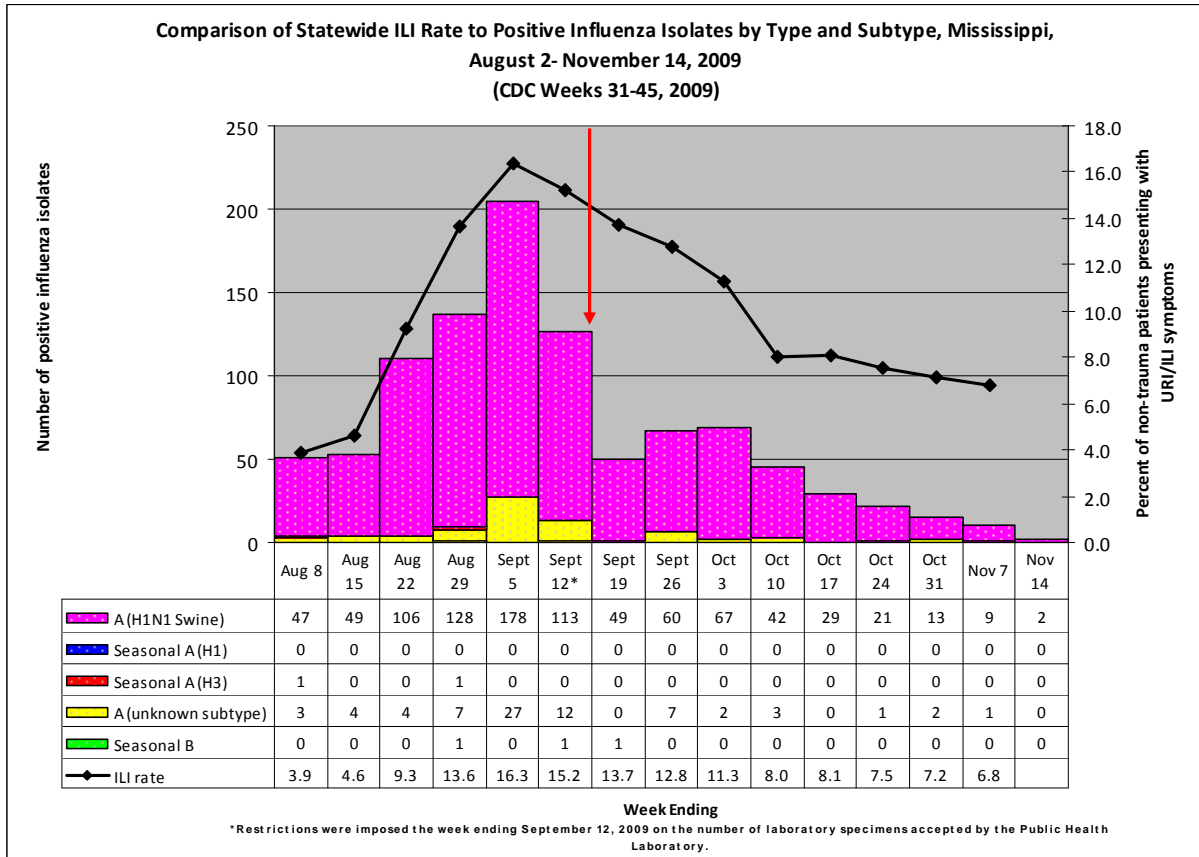
County	2009 H1N1	All Flu Deaths	2009 H1N1 Death	Other Flu Deaths
Total	1,250	17	10	7
Adams	7	0	0	0
Alcorn	7	1	0	1
Amite	0	0	0	0
Attala	6	0	0	0
Benton	1	0	0	0
Bolivar	12	0	0	0
Calhoun	16	0	0	0
Carroll	3	0	0	0
Chickasaw	12	0	0	0
Choctaw	6	0	0	0
Claiborne	1	0	0	0
Clarke	22	0	0	0
Clay	5	0	0	0
Coahoma	75	0	0	0
Copiah	8	0	0	0
Covington	10	1	1	0
DeSoto	69	0	0	0
Forrest	21	0	0	0
Franklin	3	0	0	0
George	6	0	0	0
Greene	4	0	0	0
Grenada	32	0	0	0
Hancock	15	2	2	0
Harrison	100	0	0	0
Hinds	62	1	0	1
Holmes	14	0	0	0
Humphreys	2	0	0	0
Issaquena	0	0	0	0
Itawamba	0	0	0	0
Jackson	93	2	1	1
Jasper	10	0	0	0
Jefferson	1	0	0	0
Jefferson Davis	2	0	0	0
Jones	16	4	3	1

Kemper	6	0	0	0
Lafayette	12	0	0	0
Lamar	21	0	0	0
Lauderdale	16	0	0	0
Lawrence	4	0	0	0
Leake	19	0	0	0
Lee	8	0	0	0
Leflore	7	0	0	0
Lincoln	11	0	0	0
Lowndes	12	0	0	0
Madison	46	0	0	0
Marion	47	0	0	0
Marshall	14	0	0	0
Monroe	17	0	0	0
Montgomery	8	0	0	0
Neshoba	17	0	0	0
Newton	6	0	0	0
Noxubee	3	0	0	0
Oktibbeha	24	0	0	0
Panola	34	0	0	0
Pearl River	9	0	0	0
Perry	2	0	0	0
Pike	11	0	0	0
Pontotoc	2	0	0	0
Prentiss	2	0	0	0
Quitman	11	0	0	0
Rankin	46	0	0	0
Scott	14	0	0	0
Sharkey	0	0	0	0
Simpson	2	1	0	1
Smith	5	0	0	0
Stone	3	0	0	0
Sunflower	4	0	0	0
Tallahatchie	3	0	0	0
Tate	26	1	0	1
Tippah	1	1	1	0
Tishomingo	2	0	0	0
Tunica	13	0	0	0
Union	4	0	0	0
Walthall	17	0	0	0
Warren	8	0	0	0
Washington	11	2	1	1
Wayne	1	0	0	0
Webster	10	1	1	0
Wilkinson	1	0	0	0
Winston	40	0	0	0
Yalobusha	9	0	0	0

Yazoo	15	0	0	0
Unknown	5	0	0	0

*Other flu types include any flu case not confirmed as H1N1 swine flu.

Below is a comparison of the state ILI rate to the number of positive influenza isolates since August 2nd. The predominant flu type identified continues to be novel H1N1 (swine) flu.



Mississippi reported “**regional**” (Outbreaks of influenza or increases in ILI and recent laboratory confirmed influenza in at least two but less than half the regions of the state with recent laboratory evidence of influenza in those regions) activity for week 44. For more information on flu activity nationwide, please refer to the CDC’s website at: <http://www.cdc.gov/flu/weekly/fluactivity.htm>.

