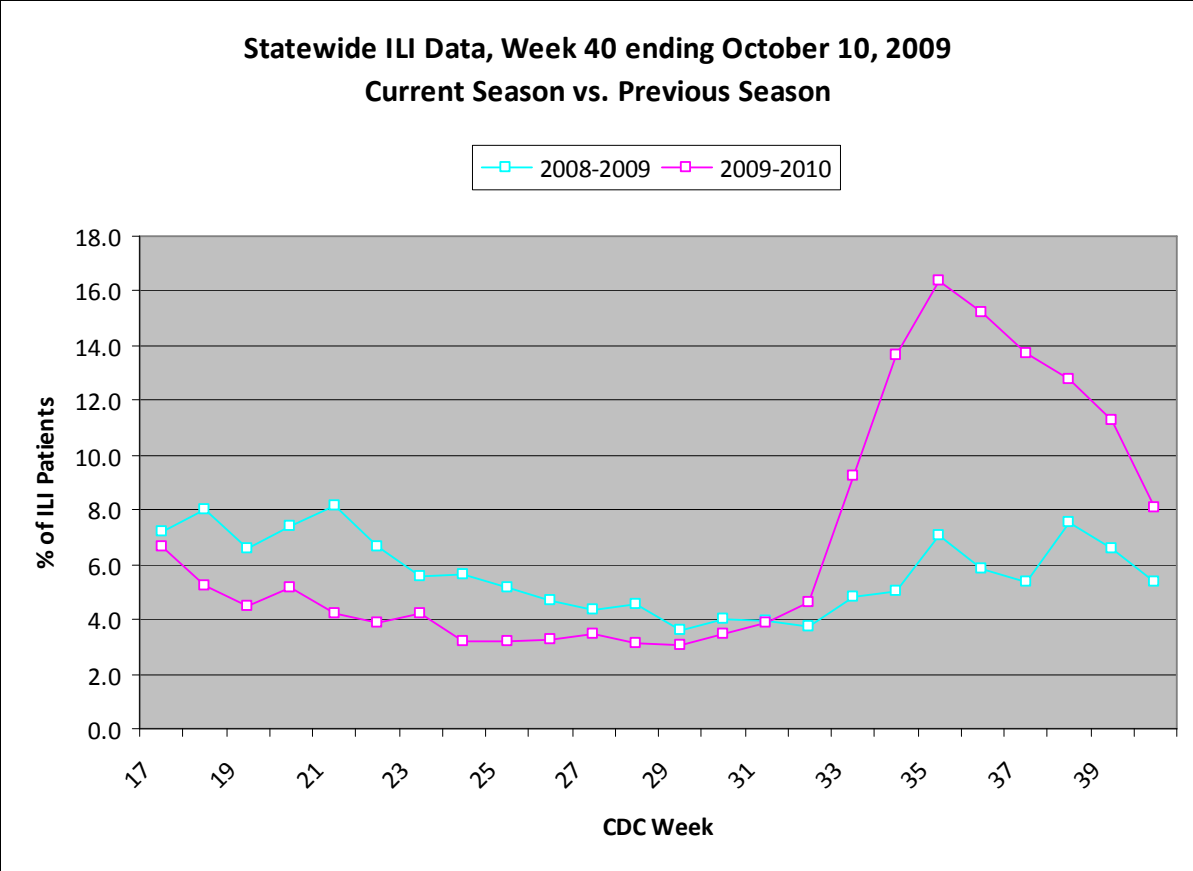
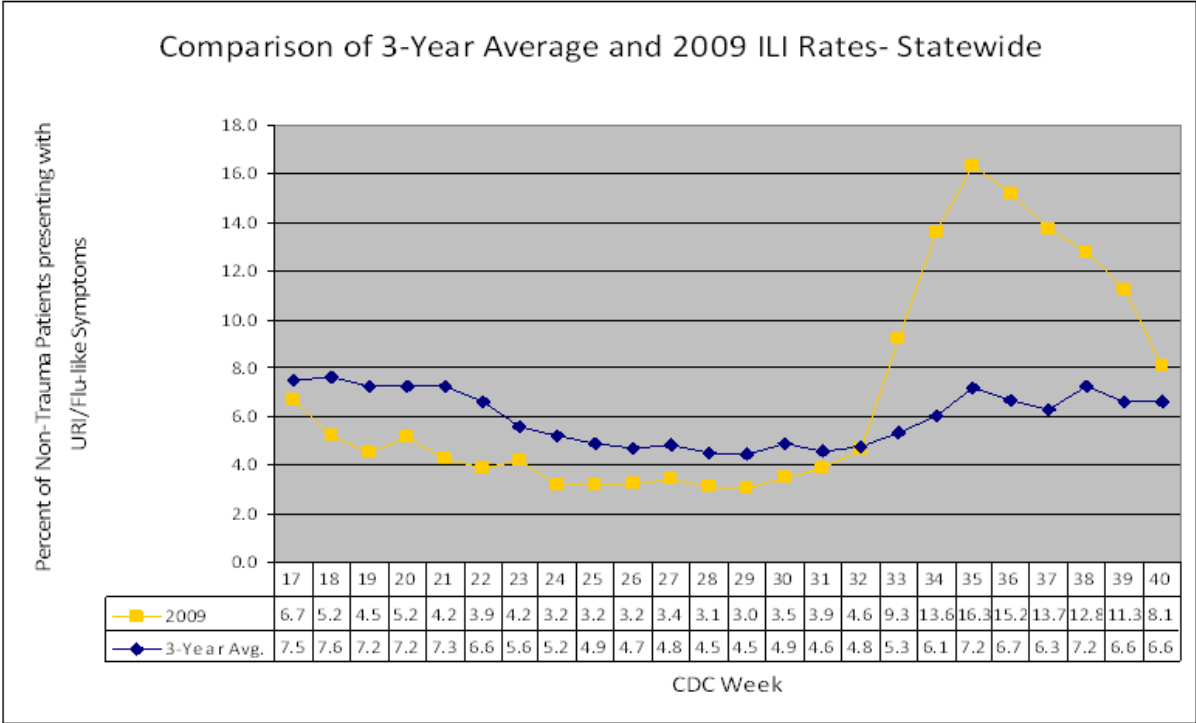


For week 40 (10/04/09- 10/10/09), the overall state ILI rate (8.1%) decreased from last week (11.3%), but was still higher than this time last year (5.4%).



New for this week's update is a file containing comparisons of 2009 ILI rates to the three-year average for each district and the state. Starting in week 33 (beginning 08/16/09), most districts and the state began to see an earlier than normal increase in ILI activity. This activity peaked in week 35 (beginning 08/30/09) for most of the districts and the state. And while the overall and district ILI rates continue to decrease each week, the ILI rates have been (since week 33) and continue to be above normal when compared to the three-year average.



During week 40, six districts (1, 4, 5, 6, 8, and 9) had a decrease in ILI activity, one district (3) had an increase, and two remained about the same (2 and 7).

*****To date, 2482 flu specimens have been submitted for testing to the MSDH PHL since April 27th. 1143 lab-confirmed novel H1N1 specimens have been reported to MSDH. This total includes 237 positives reported from outside labs. The positives were from the following counties:**

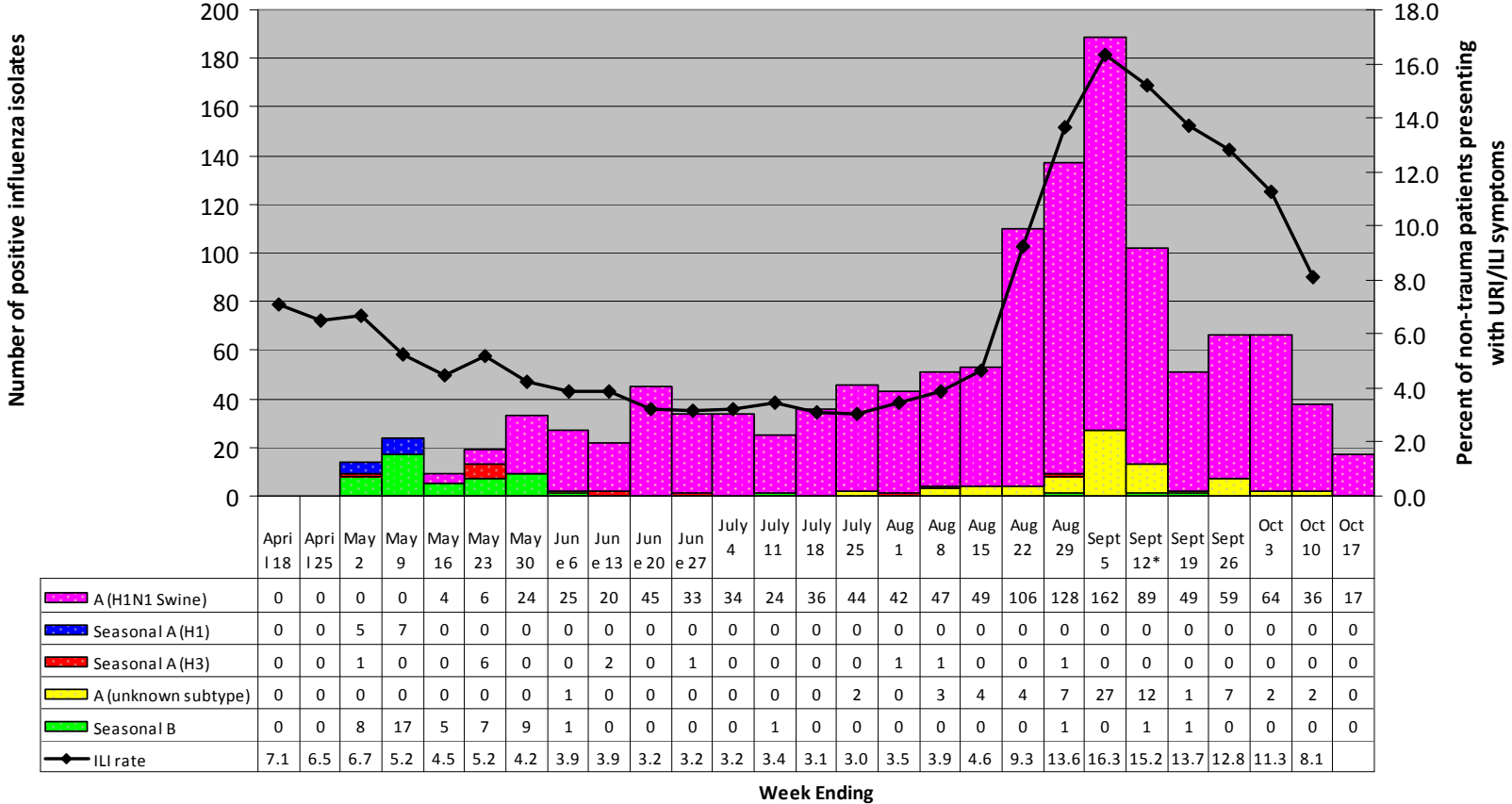
County	Total
Total	1,143
Adams	7
Alcorn	7
Amite	0
Attala	5
Benton	1
Bolivar	9
Calhoun	16
Carroll	3
Chickasaw	11
Choctaw	6
Claiborne	1
Clarke	22
Clay	5
Coahoma	67
Copiah	8
Covington	10
DeSoto	66
Forrest	20
Franklin	3
George	6
Greene	4
Grenada	31
Hancock	14
Harrison	94
Hinds	58
Holmes	6
Humphreys	2
Issaquena	0
Itawamba	0
Jackson	62
Jasper	10
Jefferson	1
Jefferson Davis	2
Jones	15
Kemper	6
Lafayette	10
Lamar	20
Lauderdale	15





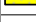

Lawrence	3
Leake	19
Lee	8
Leflore	6
Lincoln	9
Lowndes	12
Madison	35
Marion	45
Marshall	13
Monroe	17
Montgomery	8
Neshoba	17
Newton	6
Noxubee	3
Oktibbeha	24
Panola	34
Pearl River	7
Perry	2
Pike	11
Pontotoc	2
Prentiss	1
Quitman	11
Rankin	45
Scott	12
Sharkey	0
Simpson	2
Smith	5
Stone	2
Sunflower	4
Tallahatchie	3
Tate	25
Tippah	1
Tishomingo	2
Tunica	10
Union	4
Walthall	17
Warren	7
Washington	11
Wayne	1
Webster	8

Wilkinson	1
Winston	39
Yalobusha	9
Yazoo	14
Unknown	5

Below is a comparison of the state ILI rate to the number of positive influenza isolates since mid- April. Starting in late May and into October, the predominate flu type identified continues to be novel H1N1 (swine) flu.

Comparison of Statewide ILI Rate to Positive Influenza Isolates by Type and Subtype, Mississippi, April 12- October 16, 2009 (CDC Weeks 15-41, 2009)



 A (H1N1 Swine)	0	0	0	0	4	6	24	25	20	45	33	34	24	36	44	42	47	49	106	128	162	89	49	59	64	36	17
 Seasonal A (H1)	0	0	5	7	0	0	0	0	0	0	0	0	0	0	0	0	0	0	0	0	0	0	0	0	0	0	0
 Seasonal A (H3)	0	0	1	0	0	6	0	0	2	0	1	0	0	0	0	1	1	0	0	1	0	0	0	0	0	0	
 A (unknown subtype)	0	0	0	0	0	0	0	1	0	0	0	0	0	0	2	0	3	4	4	7	27	12	1	7	2	2	
 Seasonal B	0	0	8	17	5	7	9	1	0	0	0	0	1	0	0	0	0	0	0	1	0	1	1	0	0	0	
 ILI rate	7.1	6.5	6.7	5.2	4.5	5.2	4.2	3.9	3.9	3.2	3.2	3.2	3.4	3.1	3.0	3.5	3.9	4.6	9.3	13.6	16.3	15.2	13.7	12.8	11.3	8.1	

*Restrictions imposed the week ending September 12, 2009 on the number of laboratory specimens accepted by the Public Health Laboratory.

Mississippi reported “widespread” (Outbreaks of influenza or increases in ILI cases and recent laboratory-confirmed influenza in at least half the regions of the state with recent laboratory evidence of influenza in the state) activity for week 40. For more information on flu activity nationwide, please refer to the CDC’s website at: <http://www.cdc.gov/flu/weekly/fluactivity.htm>.

