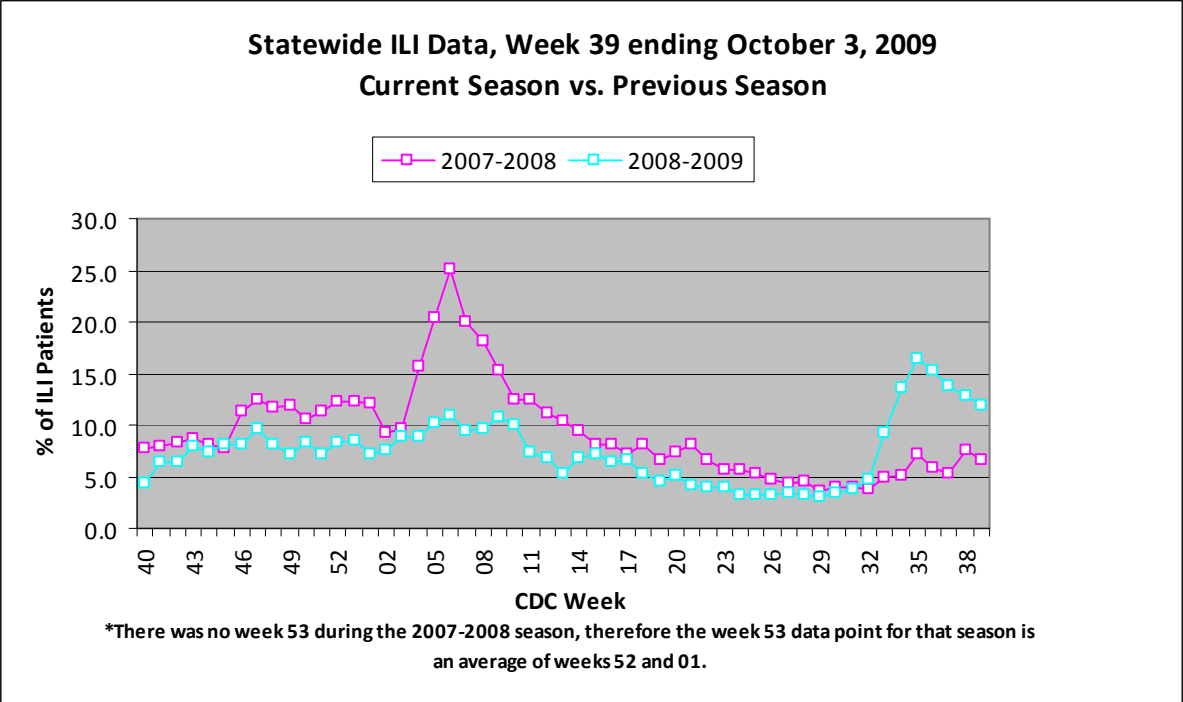


For week 39 (09/27/09- 10/03/09), the overall state ILI rate (11.8%) decreased from last week (12.8%), but was still higher than this time last year (6.6%).



During week 39, five districts (1, 2, 4, 7, and 9) had a decrease in ILI activity, while four districts (3, 5, 6, and 8) had an increase.

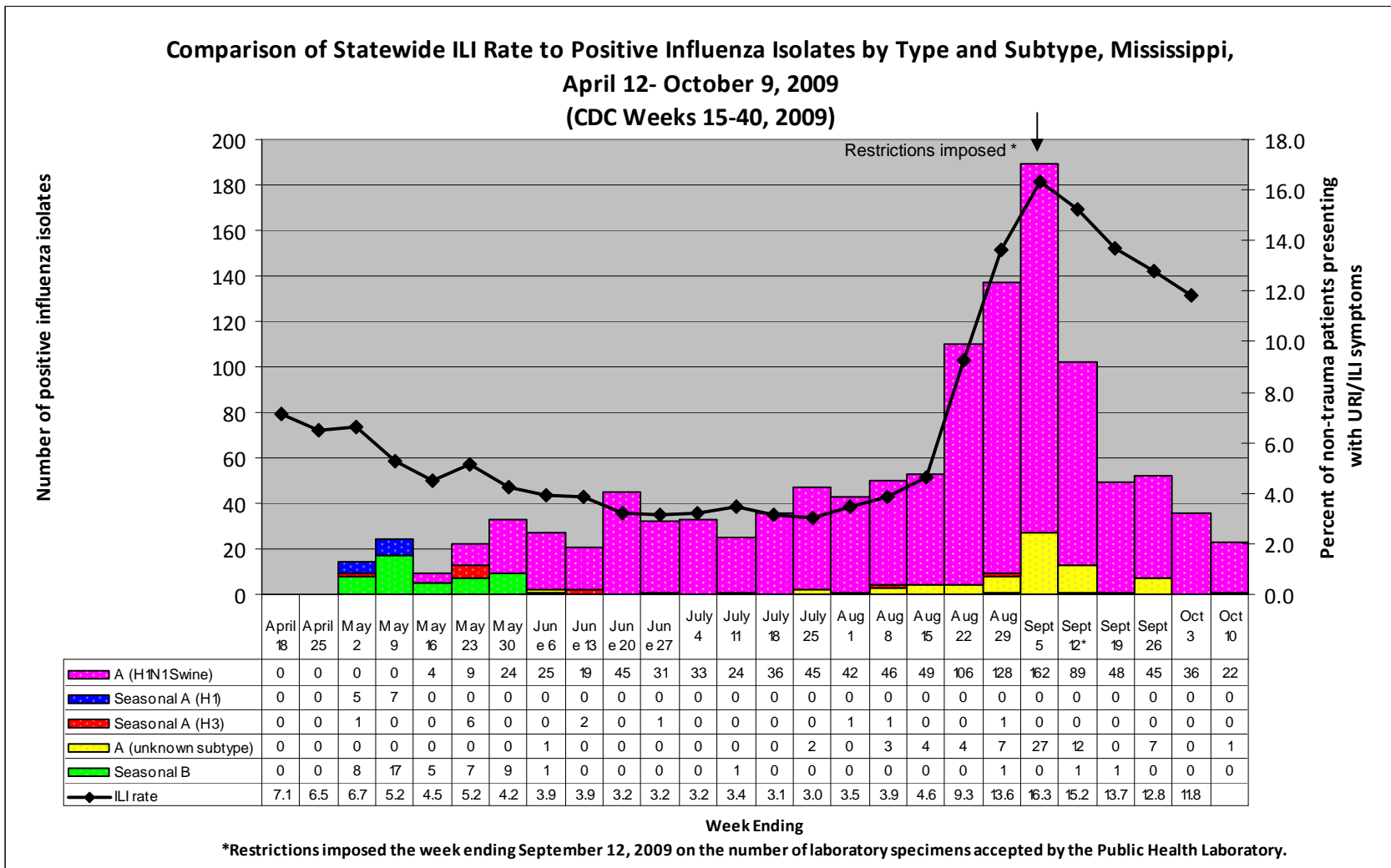
*****To date, 2524 flu specimens have been submitted for testing to the MSDH PHL since April 27th. 1066 lab-confirmed novel H1N1 specimens have been reported to MSDH. This total includes 199 positives reported from outside labs. The positives were from the following counties:**

County	Total
Total	1,066
Adams	6
Alcorn	5
Amite	0
Attala	4
Benton	1
Bolivar	8
Calhoun	16
Carroll	3
Chickasaw	11
Choctaw	6
Claiborne	1
Clarke	22
Clay	5
Coahoma	64
Copiah	7
Covington	9
DeSoto	63
Forrest	20
Franklin	3
George	6
Greene	4
Grenada	30
Hancock	14
Harrison	93
Hinds	51
Holmes	4
Humphreys	2
Issaquena	0
Itawamba	0
Jackson	58
Jasper	10
Jefferson	1
Jefferson Davis	2
Jones	15

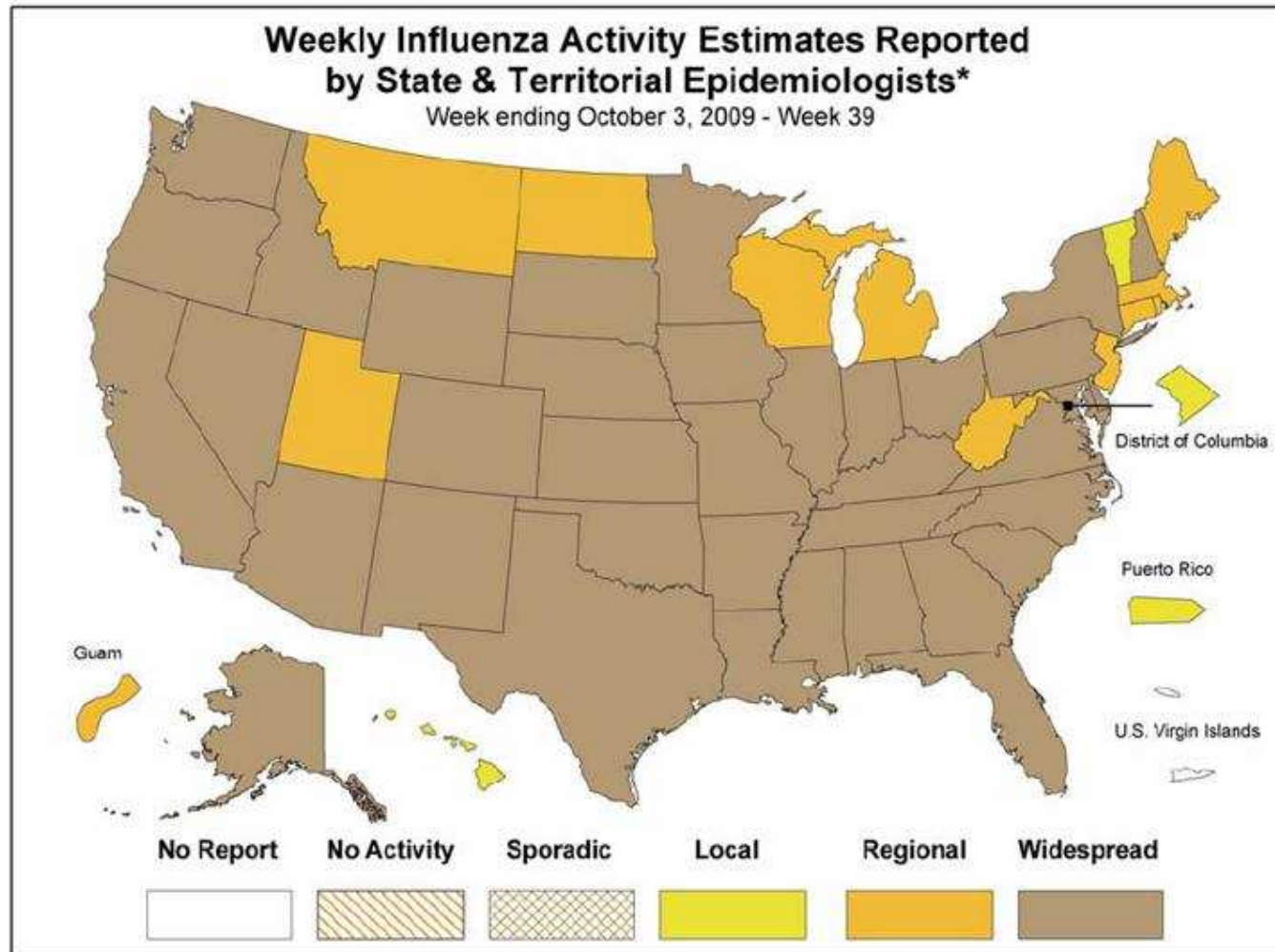
County	Total
Kemper	6
Lafayette	9
Lamar	19
Lauderdale	13
Lawrence	2
Leake	18
Lee	8
Leflore	3
Lincoln	9
Lowndes	12
Madison	31
Marion	41
Marshall	13
Monroe	18
Montgomery	8
Neshoba	16
Newton	6
Noxubee	3
Oktibbeha	22
Panola	27
Pearl River	6
Perry	2
Pike	11
Pontotoc	2
Prentiss	1
Quitman	9
Rankin	42
Scott	11
Sharkey	0
Simpson	2
Smith	5
Stone	2
Sunflower	3
Tallahatchie	2
Tate	21

County	Total
Tippah	1
Tishomingo	2
Tunica	8
Union	4
Walthall	17
Warren	7
Washington	10
Wayne	1
Webster	8
Wilkinson	1
Winston	39
Yalobusha	9
Yazoo	6
Unknown	6

Below is a comparison of the state ILI rate to the number of positive influenza isolates since mid- April. Starting in late May and into October, the predominate flu type identified continues to be novel H1N1 (swine) flu.



Mississippi reported “widespread” (Outbreaks of influenza or increases in ILI cases and recent laboratory-confirmed influenza in at least half the regions of the state with recent laboratory evidence of influenza in the state) activity for week 39. For more information on flu activity nationwide, please refer to the CDC’s website at: <http://www.cdc.gov/flu/weekly/fluactivity.htm>.



* This map indicates geographic spread & does not measure the severity of influenza activity