

SAVE THE DATE

Community Interpreter Training Spring 2025

DATES:

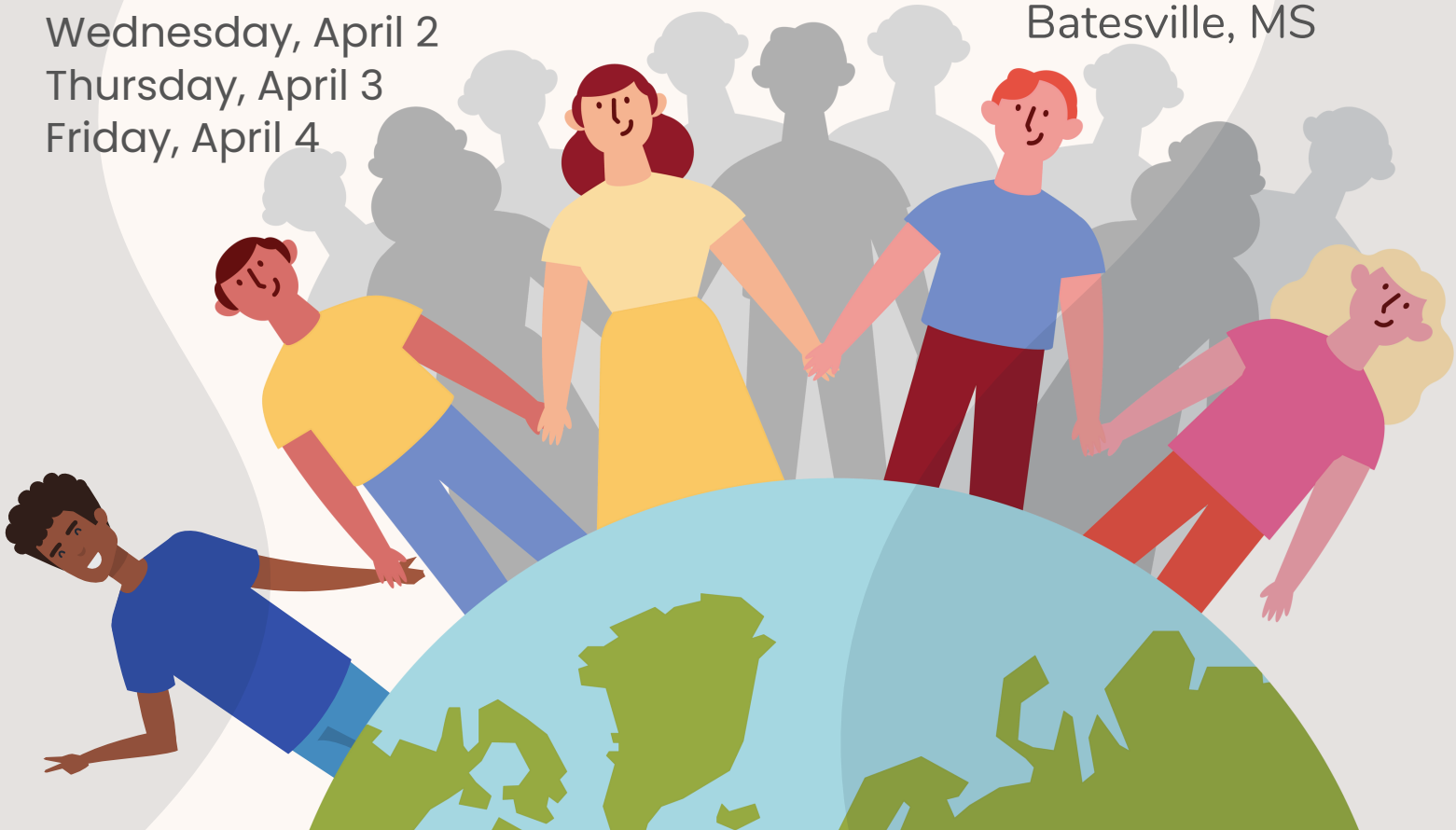
Monday, March 24
Tuesday, March 25
Wednesday, March 26
Thursday, March 27

Wednesday, April 2
Thursday, April 3
Friday, April 4

LOCATION:

Panola County Health
Department in
Batesville

510 US-51
Batesville, MS



ADDITIONAL INFO:

601-206-1050
language.access@msdh.ms.gov

