



2010-2011 Influenza Report Week 48

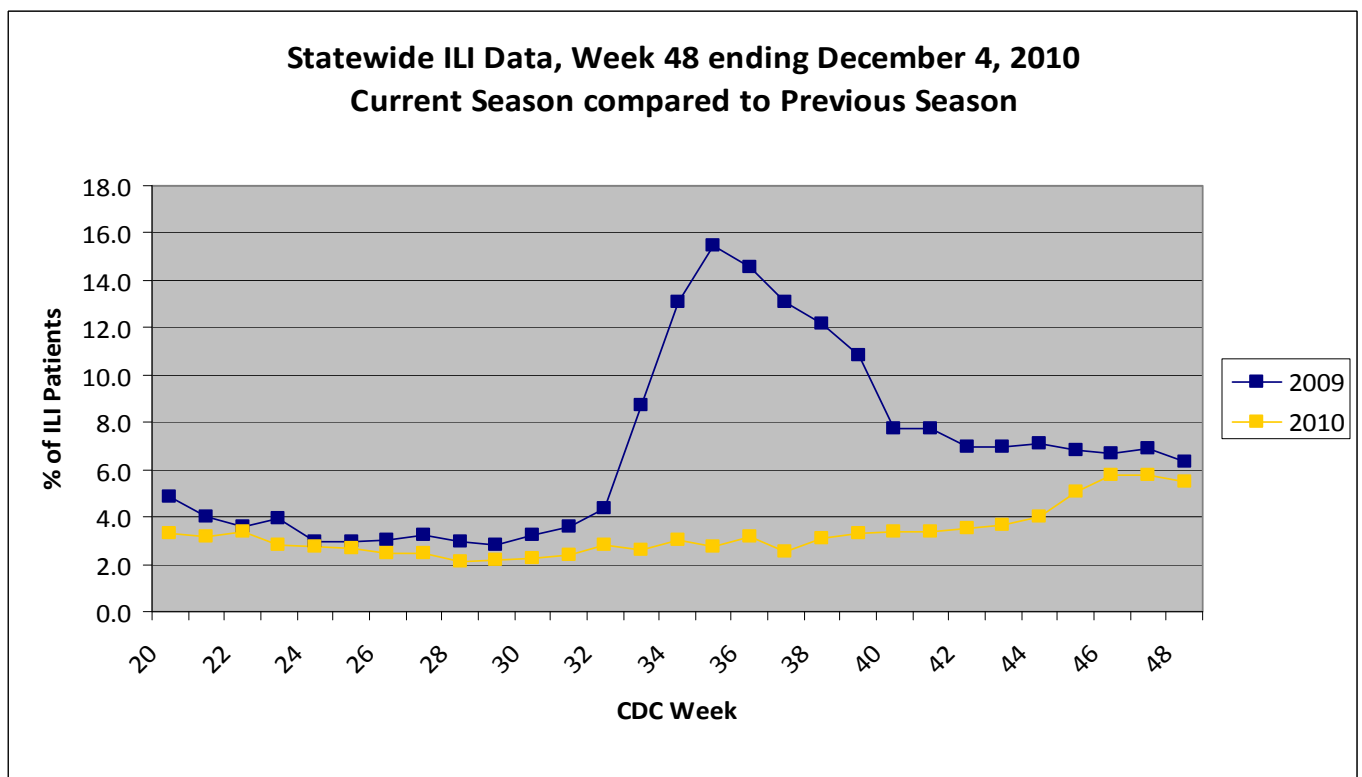
November 28, 2010 – December 4, 2010

About our flu activity reporting

MSDH relies upon selected health practitioners across the state to report possible flu cases (cases of influenza-like illness) for confirmation by laboratory testing. Our reports below show **only** cases confirmed as influenza by the MSDH Public Health Laboratory, and represent the distribution of flu in the state, not an actual count of all flu cases statewide.

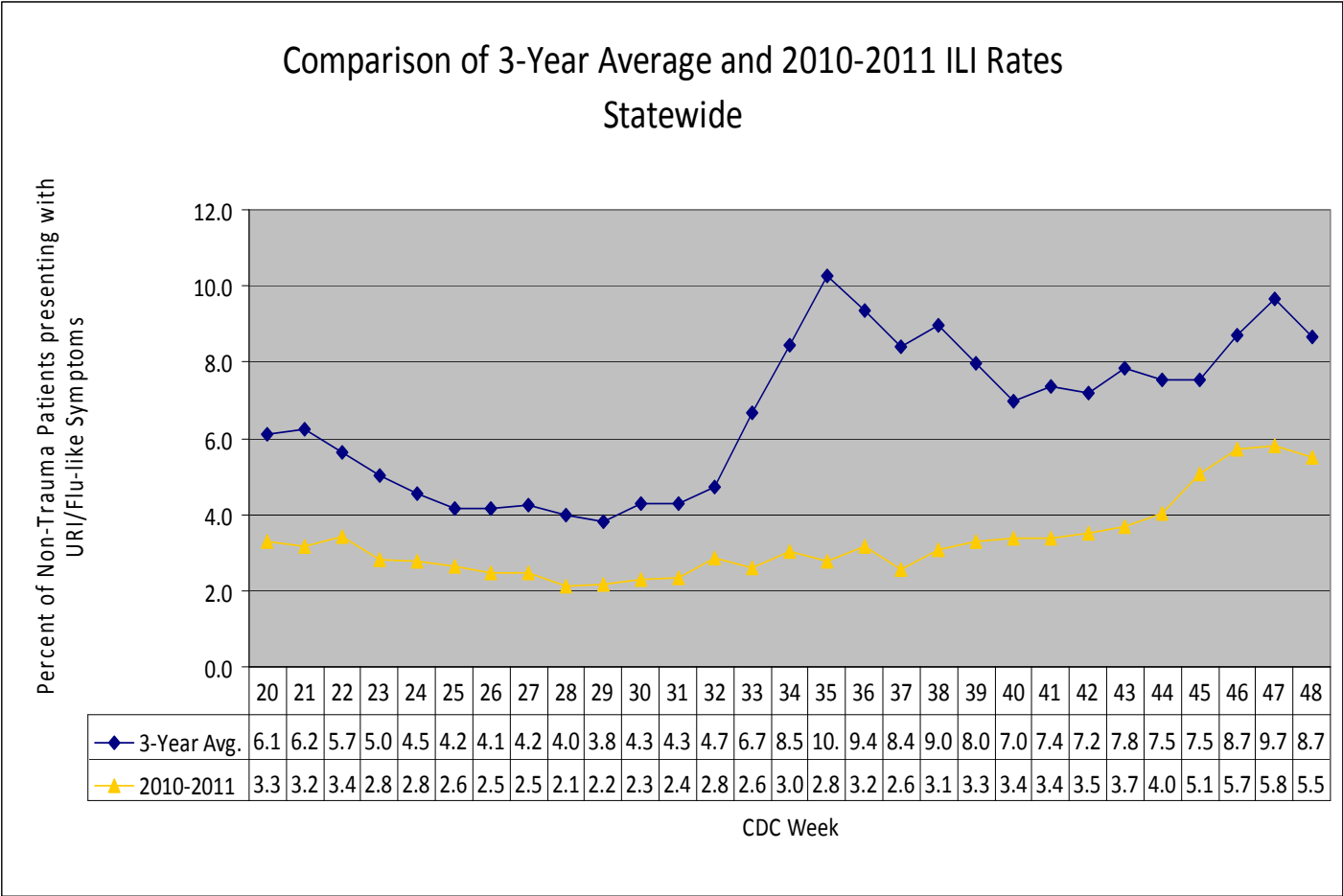
State URI/ILI Surveillance

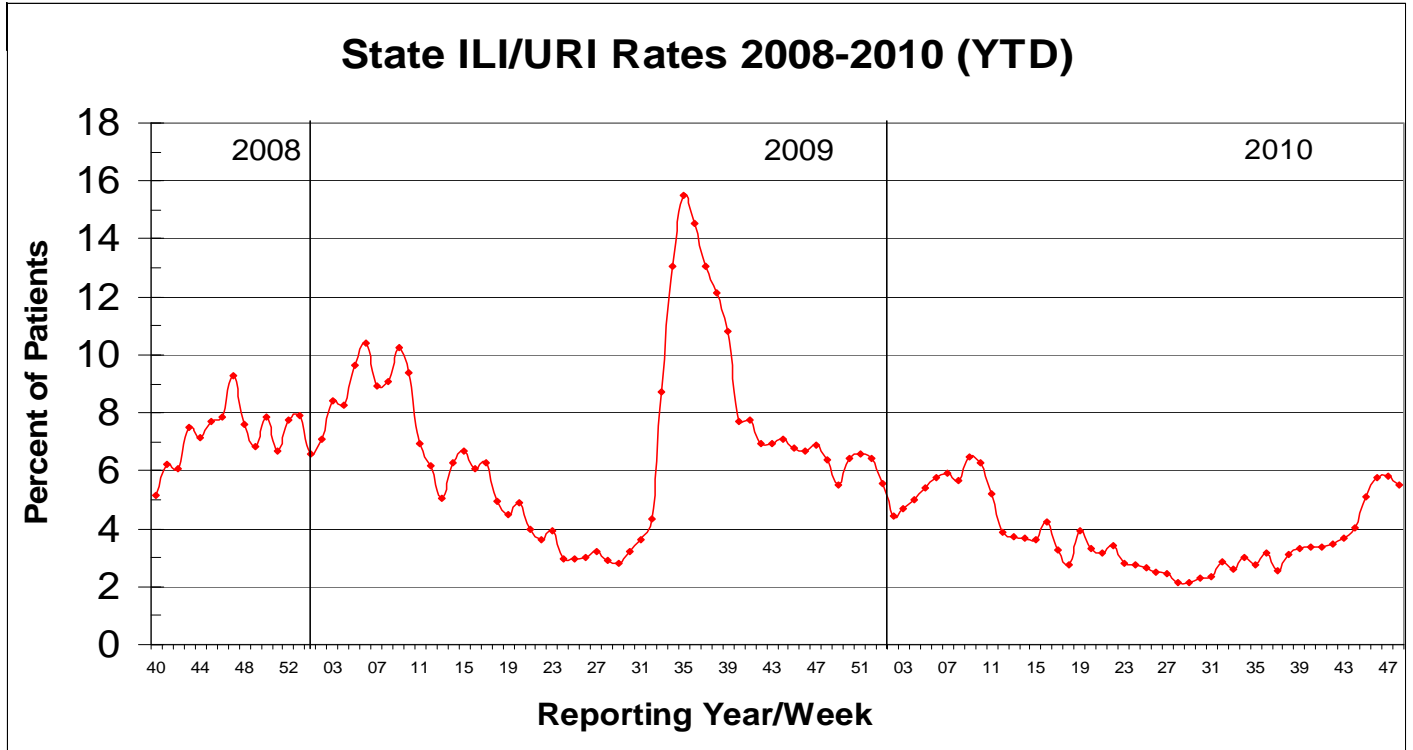
For week 48 (11/28/2010-12/04/2010), the overall state ILI rate (5.5%) was slightly lower compared to last week (5.8%), but was lower than this time last year (6.9%).



During week 48, four districts (1, 3, 6, and 7) had an increase in ILI activity; four districts (2, 4, 8, and 9) had a decrease, while the remaining district (5) remained about the same.

The 2010-11 state ILI rate was below baseline for week 48 and has been below baseline for the past six months.

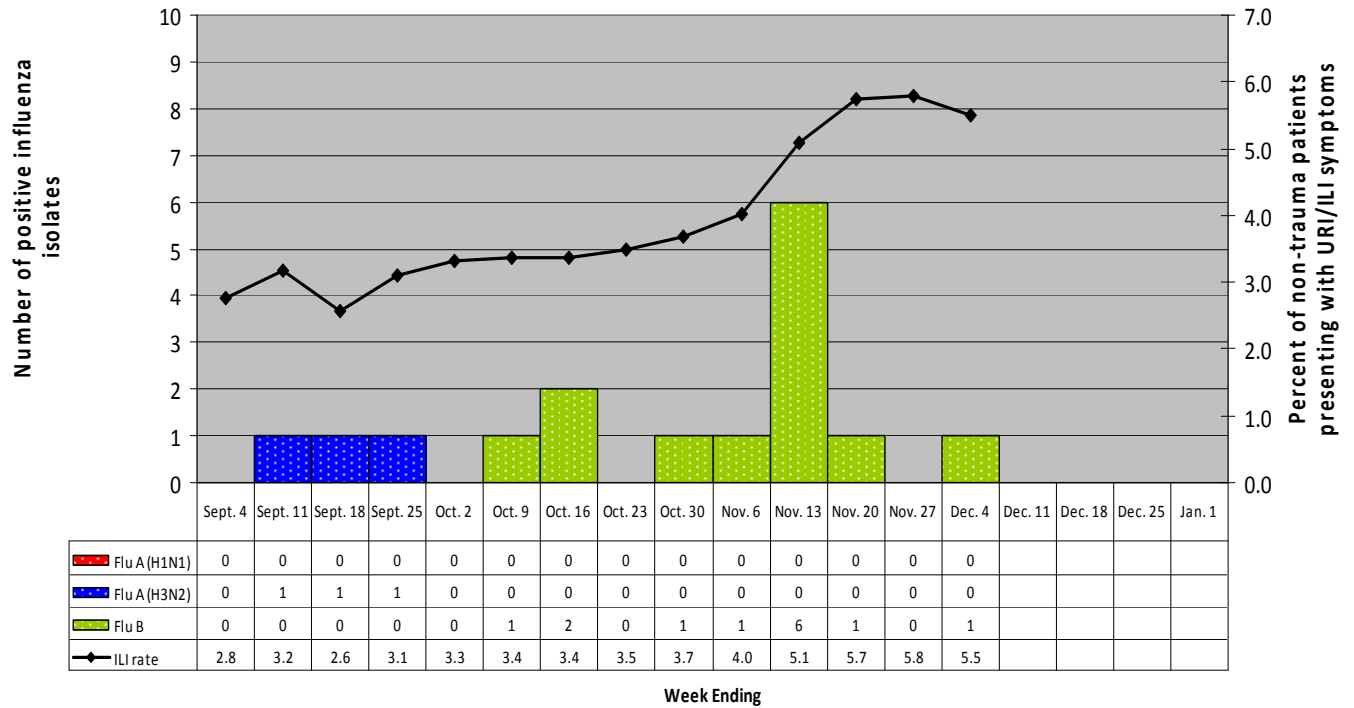




Flu testing Reports*

Since September, there have been **sixteen** respiratory samples that were positive by influenza PCR testing. Three were positive for influenza A (H3), one of which had a documented travel history to Florida prior to the onset of symptoms, and represented an imported case. The other twelve confirmed influenza cases were Flu B. The cases were identified from the following counties: Attala, Holmes, Jasper, Lamar, Oktibbeha, and Perry.

**Comparison of Statewide ILI Rate to Positive Influenza Isolates by Type and Subtype, Mississippi,
August 28, 2010- December 4, 2010
(CDC Week 35, 2010- Week 48, 2010)**



* See MS Confirmed Flu Cases 2010-2011 for county, flu type specifics.

National ILI Surveillance

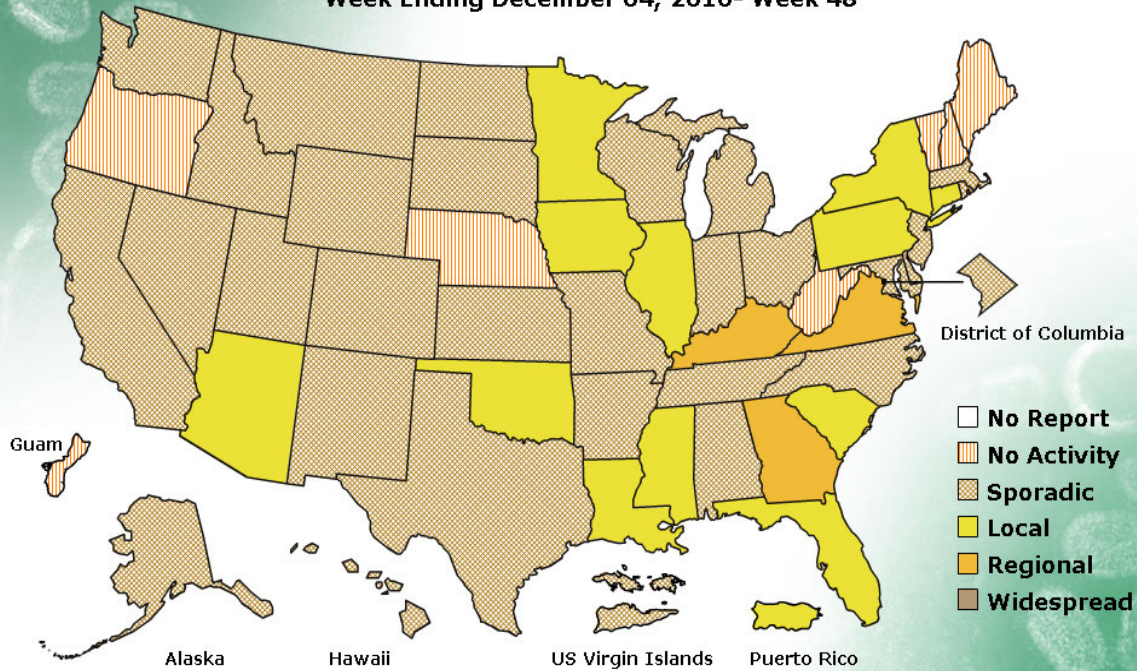
Mississippi reported **“local”** (increased ILI within a single region AND recent [within the past 3 weeks] laboratory evidence of influenza in the region) activity for week **48**.

FLUVIEW



A Weekly Influenza Surveillance Report Prepared by the Influenza Division
Weekly Influenza Activity Estimates Reported by State and Territorial Epidemiologists*

Week Ending December 04, 2010- Week 48



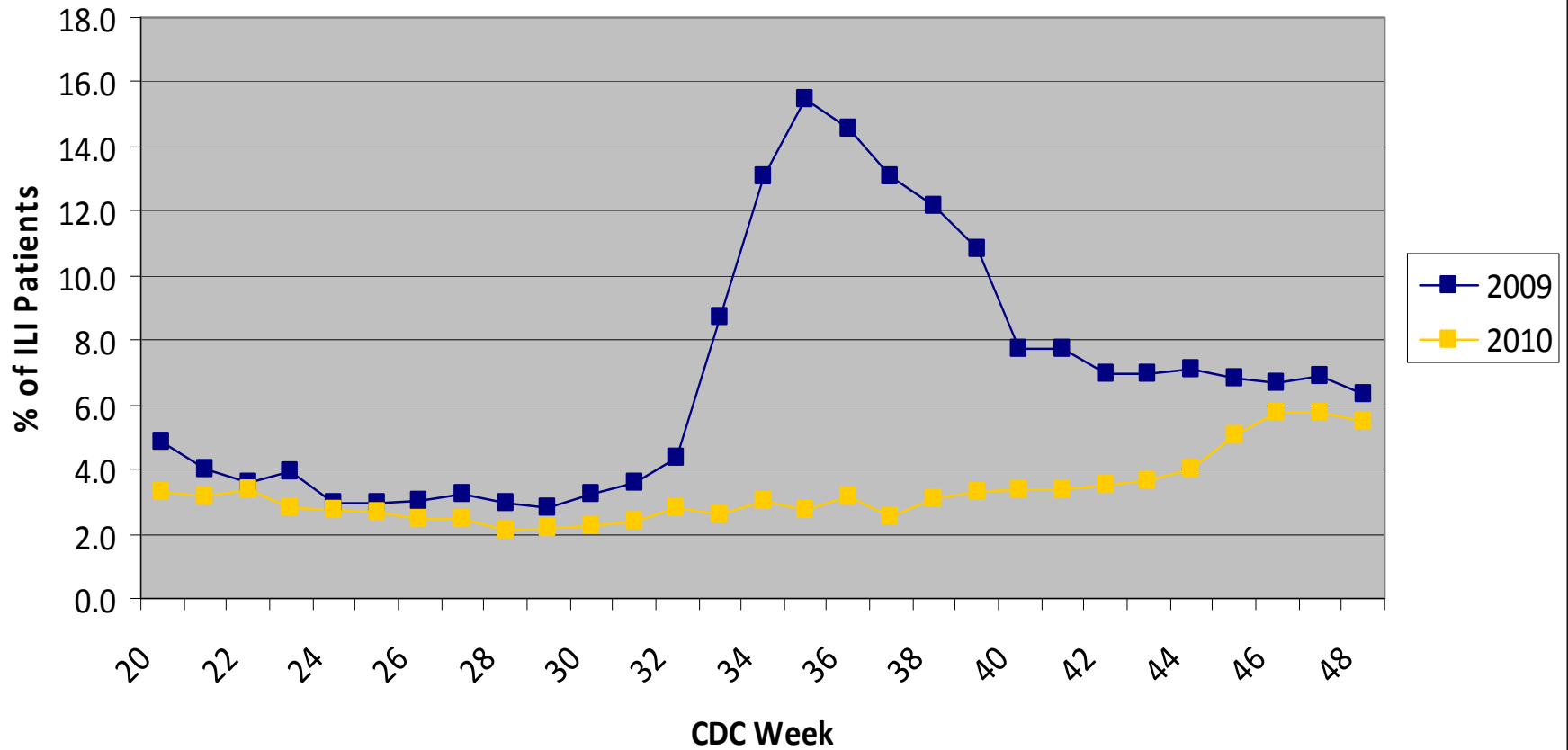
*This map indicates geographic spread and does not measure the severity of influenza activity.

For more information on flu activity nationwide, please refer to the CDC's website:
<http://www.cdc.gov/flu/weekly/fluactivity.htm>

Page intentionally blank

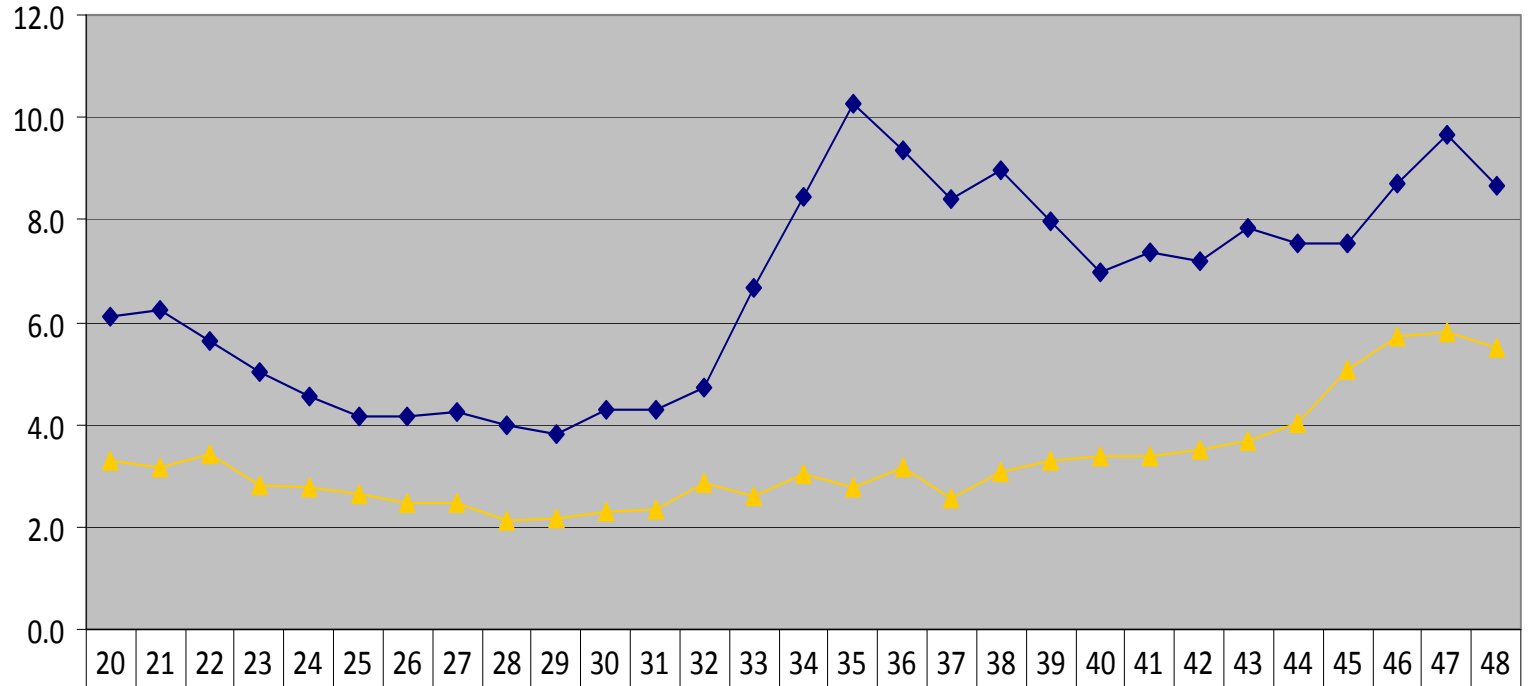
Appendix

Statewide ILI Data, Week 48 ending December 4, 2010
Current Season compared to Previous Season



Comparison of 3-Year Average and 2010-2011 ILI Rates Statewide

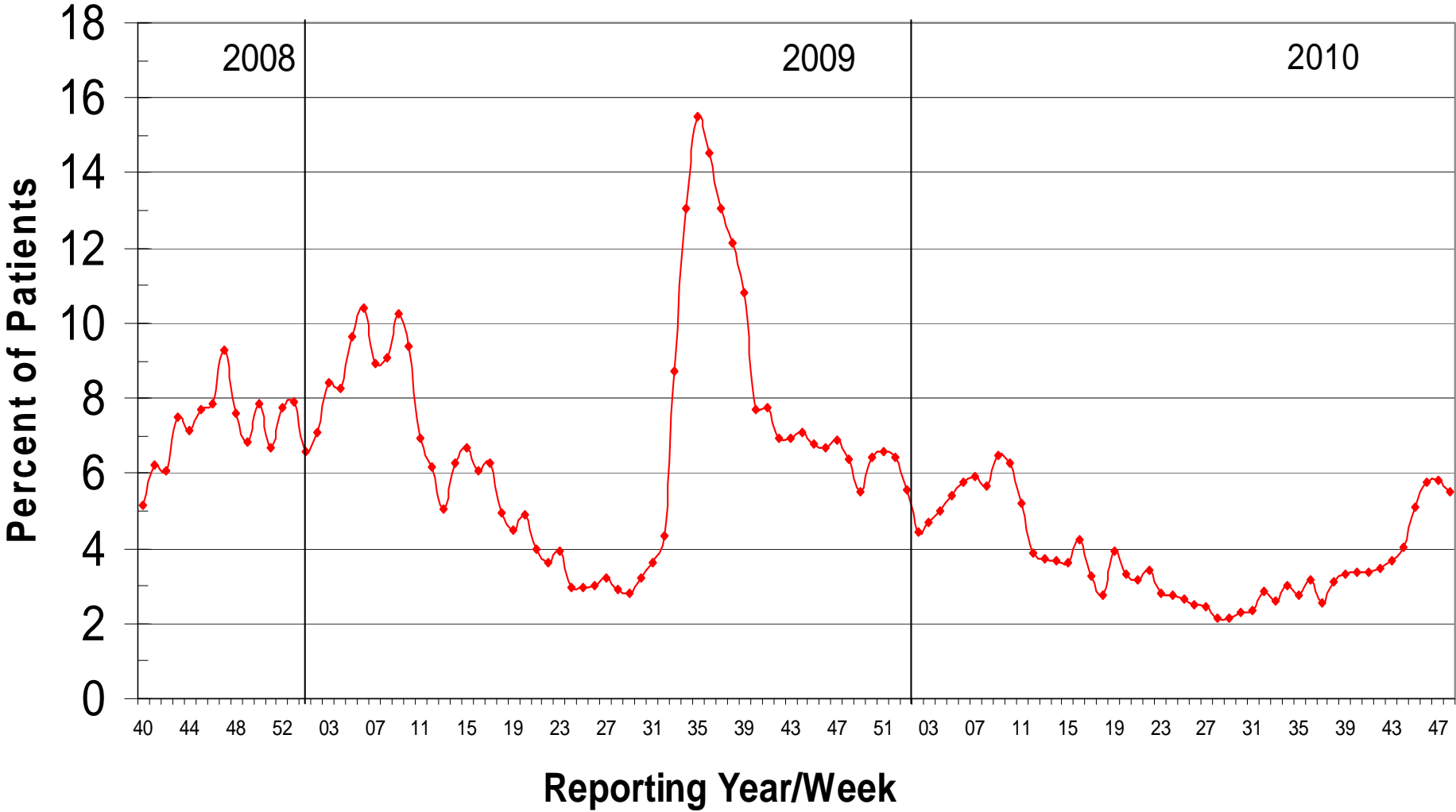
Percent of Non-Trauma Patients presenting with URI/Flu-like Symptoms



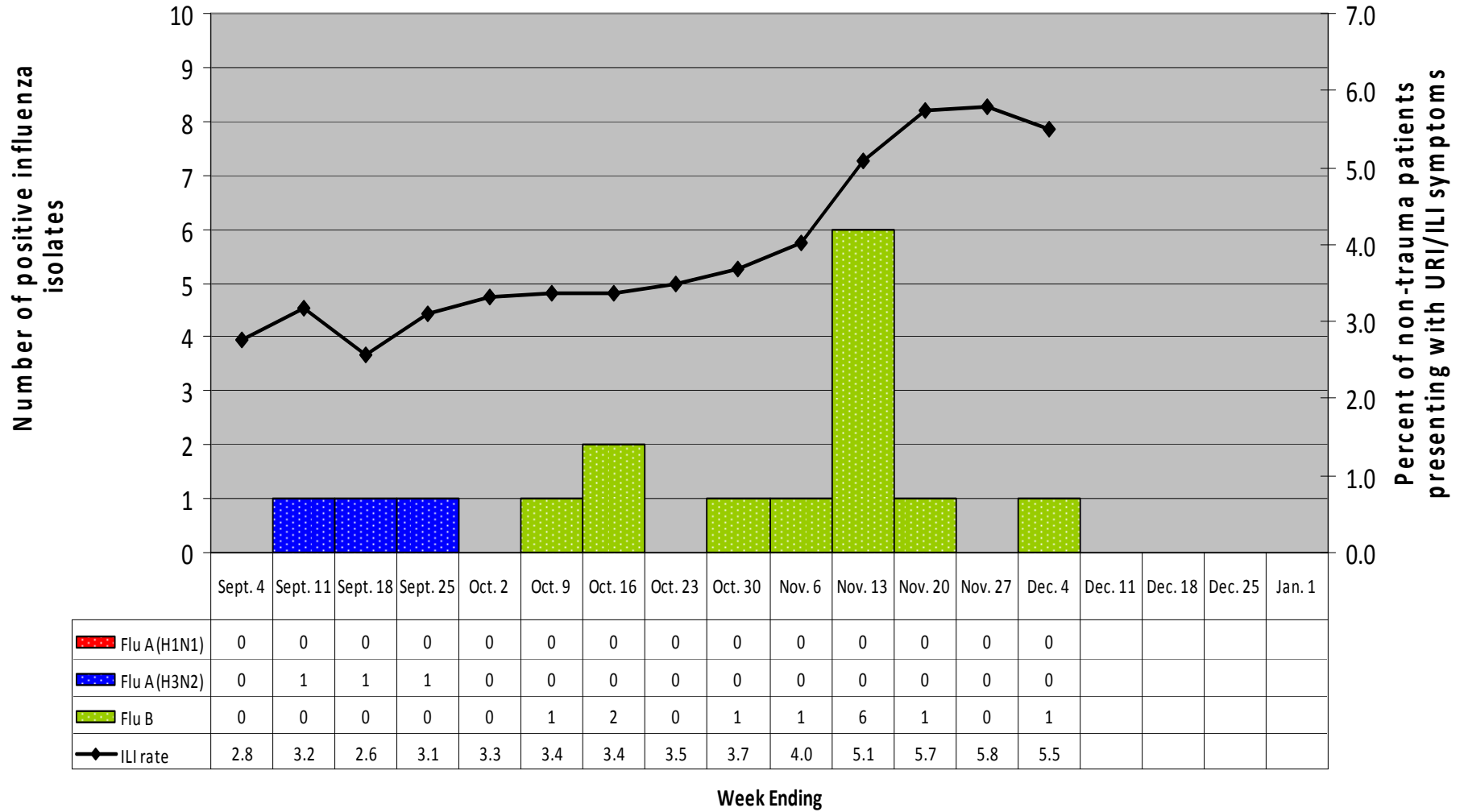
| | | | | | | | | | | | | | | | | | | | | | | | | | | | | | |
|---------------|-----|-----|-----|-----|-----|-----|-----|-----|-----|-----|-----|-----|-----|-----|-----|------|-----|-----|-----|-----|-----|-----|-----|-----|-----|-----|-----|-----|-----|
| ◆ 3-Year Avg. | 6.1 | 6.2 | 5.7 | 5.0 | 4.5 | 4.2 | 4.1 | 4.2 | 4.0 | 3.8 | 4.3 | 4.3 | 4.7 | 6.7 | 8.5 | 10.0 | 9.4 | 8.4 | 9.0 | 8.0 | 7.0 | 7.4 | 7.2 | 7.8 | 7.5 | 7.5 | 8.7 | 9.7 | 8.7 |
| ▲ 2010-2011 | 3.3 | 3.2 | 3.4 | 2.8 | 2.8 | 2.6 | 2.5 | 2.5 | 2.1 | 2.2 | 2.3 | 2.4 | 2.8 | 2.6 | 3.0 | 2.8 | 3.2 | 2.6 | 3.1 | 3.3 | 3.4 | 3.4 | 3.5 | 3.7 | 4.0 | 5.1 | 5.7 | 5.8 | 5.5 |

CDC Week

State ILI/URI Rates 2008-2010 (YTD)



**Comparison of Statewide ILI Rate to Positive Influenza Isolates by Type and Subtype, Mississippi,
August 28, 2010- December 4, 2010
(CDC Week 35, 2010- Week 48, 2010)**

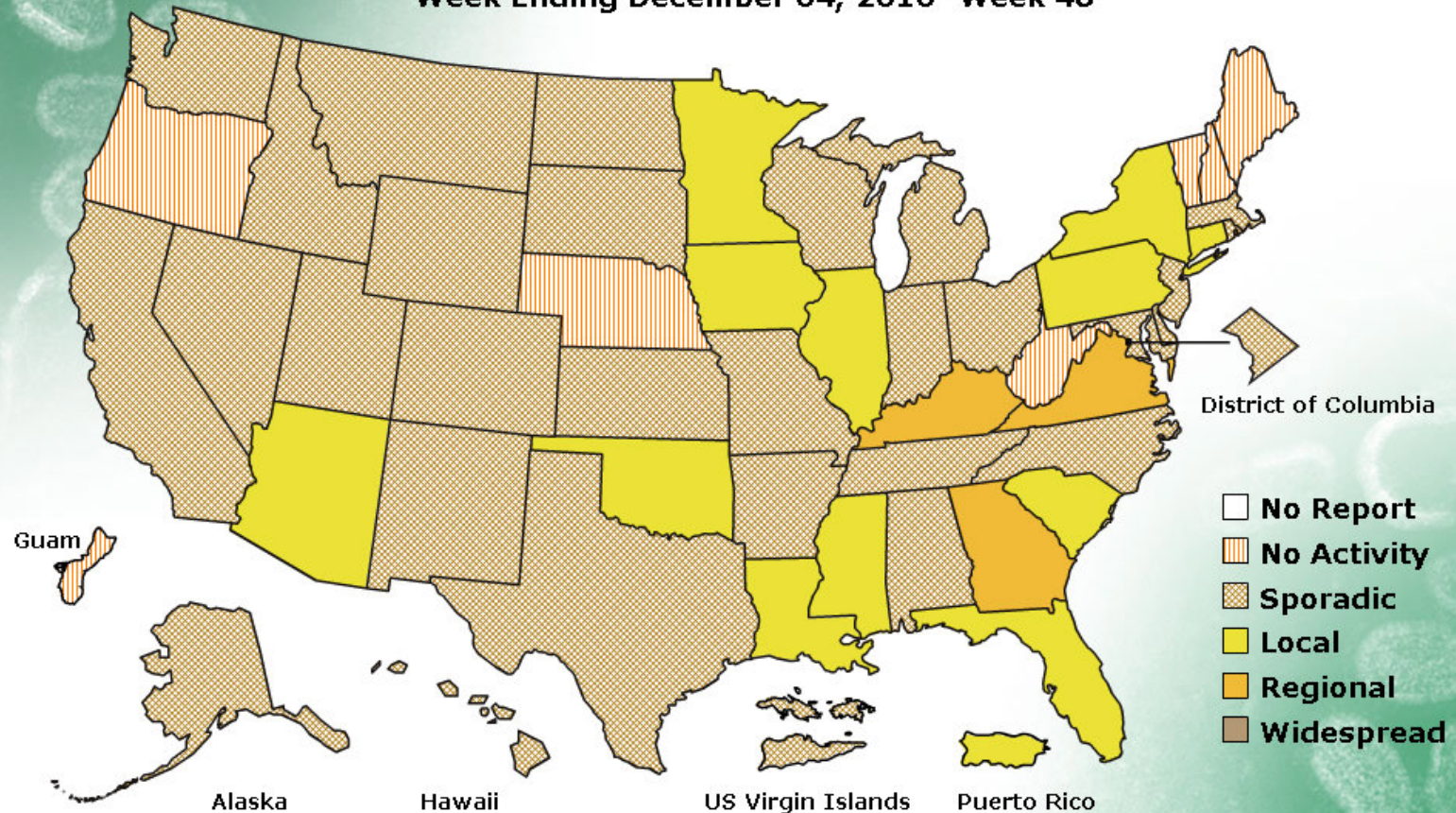


FLUVIEW



A Weekly Influenza Surveillance Report Prepared by the Influenza Division
Weekly Influenza Activity Estimates Reported by State and Territorial Epidemiologists*

Week Ending December 04, 2010- Week 48



*This map indicates geographic spread and does not measure the severity of influenza activity.