



MISSISSIPPI STATE DEPARTMENT OF HEALTH

**This is an official  
MS Health Alert Network (HAN) - Advisory**

**MESSAGE ID:** MSHAN-20221006-00587-ADV (Health Advisory)  
**RECIPIENTS:** All Physicians, Hospitals, ERs, ICPs, NPs, PAs, and  
Healthcare Providers – Statewide  
Thursday, October 6, 2022  
**SUBJECT:** Melioidosis in the United States: What Clinicians Need to Know  
Following Newly Discovered Endemicity

Dear Colleagues,

- Please join the CDC Clinician Outreach and Communication Activity (COCA Call) “**Melioidosis in the United States: What Clinicians Need to Know Following Newly Discovered Endemicity**” on Thursday October 13, 2022, at 1:00pm-2:00pm CT. *This call is particularly important to physicians and providers in Mississippi due to the recent discovery of the causative bacteria in environmental samples in the state, representing the first time this bacterium has been identified in environmental samples in the US.*
- The causative bacteria *Burkholderia pseudomallei* (*B. pseudomallei*) was recently found in soil and water in the Mississippi during a collaborative investigation between CDC and the Mississippi State Department of Health. Identified for the first time in environmental samples in the US, this bacterium causes a rare and serious disease called melioidosis.
- During this COCA Call, presenters will provide updates on the new and evolving epidemiology of melioidosis in the United States and discuss what clinicians need to know to prevent, diagnose, and treat melioidosis. They will also address what the Centers for Disease Control and Prevention (CDC) is doing to learn more about melioidosis in the United States.
- [Free Continuing Education \(CE\)](#) will be offered for this COCA Call. See below for full call details.

### Call Details

**Date:** Thursday, October 13, 2022

**Time:** 1:00 PM – 2:00 PM CT

**Webinar Link:**

<https://www.zoomgov.com/j/1604758867>

**Passcode:** 254552

Regards,

Paul Byers, MD  
State Epidemiologist



MISSISSIPPI STATE DEPARTMENT OF HEALTH

		<h1>COCA Call</h1> <h2>CDC Clinician Outreach and Communication Activity</h2>
		

### Melioidosis in the United States: What Clinicians Need to Know Following Newly Discovered Endemicity

#### Overview

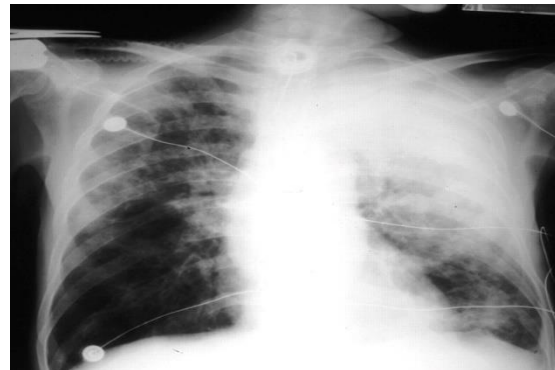
The causative bacteria *Burkholderia pseudomallei* (*B. pseudomallei*) was recently found in soil and water in the southern United States. This bacterium causes a rare and serious disease called melioidosis. During this COCA Call, presenters will provide updates on the new and evolving epidemiology of melioidosis in the United States and discuss what clinicians need to know to prevent, diagnose, and treat melioidosis. They will also address what the Centers for Disease Control and Prevention (CDC) is doing to learn more about melioidosis in the United States.

If you are unable to attend the live COCA Call, the recording will be available for viewing on the [COCA Call webpage](#) a few hours after the live event ends.

The slide set will be available on the day of the call on the [COCA Call webpage](#) under Call Materials.

[Free Continuing Education \(CE\)](#) will be offered for this COCA Call.

Registration is not required.



**Date:** Thursday, October 13, 2022

**Time:** 2:00 PM – 3:00 PM ET

**Webinar Link:**

<https://www.zoomgov.com/j/1604758867>

**Passcode:** 254552

**Dial In:**

US: +1 669 254 5252

or +1 646 828 7666

or +1 551 285 1373

or +1 669 216 1590

**One-tap mobile:**

+16692545252,,1604758867#,,,,\*254552#

or

+16468287666,,1604758867#,,,,\*254552#

**Webinar ID:** 160 475 8867

[International Numbers](#)



## Activity-specific Objectives

At the conclusion of the session, the participant will be able to accomplish the following:

1. Outline the evolving epidemiological risk factors and clinical characteristics of melioidosis, and when to consider melioidosis as a potential diagnosis.
2. Discuss best practices for preventing, diagnosing, and treating melioidosis, including how to address diagnostic challenges.
3. Describe what CDC is doing to learn more about melioidosis in the United States and how clinicians and public health officials can help.

## COCA Call Objectives

1. Cite background information on the topic covered during the presentation.
2. Discuss CDC's role in the topic covered during the presentation.
3. Describe the topic's implications for clinicians.
4. Discuss concerns and/or issues related to preparedness for and/or response to urgent public health threats.
5. Promote health improvement, wellness, and disease prevention in cooperation with patients, communities, at-risk populations, and other members of an interprofessional team of healthcare providers.

## Presenters

### **Julia Petras, MSPH, BSN, RN**

Epidemic Intelligence Service Officer  
Bacterial Special Pathogens Branch  
Division of High-Consequence Pathogens & Pathology  
National Center for Emerging and Zoonotic Infectious Diseases  
Centers for Disease Control and Prevention

### **Caroline A. Schrodt, MD, MSPH**

Lieutenant Commander, U.S. Public Health Service  
Bacterial Special Pathogens Branch  
Division of High-Consequence Pathogens & Pathology  
National Center for Emerging and Zoonotic Infectious Diseases  
Centers for Disease Control and Prevention

### **Mindy Elrod, BS**

Microbiologist  
Zoonoses and Select Agent Laboratory



Bacterial Special Pathogens Branch  
Division of High-Consequence Pathogens & Pathology  
National Center for Emerging and Zoonotic Infectious Diseases  
Centers for Disease Control and Prevention

## Instructions for Obtaining Continuing Education

To receive continuing education (CE) for **WC4520-101322 – Clinician Outreach and Communication Activity (COCA) Calls/Webinars – Melioidosis in the United States: What Clinicians Need to Know Following Newly Discovered Endemicity, Thursday, October 13, 2022**, please visit [TCEO](#) and follow these [9 Simple Steps](#) by **Monday, November 14, 2022**.

To receive continuing education (CE) for **WC4520-101322 – Clinician Outreach and Communication Activity (COCA) Calls/Webinars – Melioidosis in the United States: What Clinicians Need to Know Following Newly Discovered Endemicity, Thursday, October 13, 2022**, (Web on Demand), please visit [TCEO](#) and follow these [9 Simple Steps](#) between **Tuesday, November 15, 2022**, and **Friday, November 15, 2024**.

## Accreditation Statement



JOINTLY ACCREDITED PROVIDER™  
INTERPROFESSIONAL CONTINUING EDUCATION

In support of improving patient care, the Centers for Disease Control and Prevention is jointly accredited by the **Accreditation Council for Continuing Medical Education (ACCME)**, the **Accreditation Council for Pharmacy Education (ACPE)**, and the **American Nurses Credentialing Center (ANCC)**, to provide continuing education for the healthcare team.

**CME:** The Centers for Disease Control and Prevention designates this activity for a maximum of 1 AMA PRA Category 1 Credits™. Physicians should claim only the credit commensurate with the extent of their participation in the activity.

**AAPA CME:** The Centers for Disease Control and Prevention has been authorized by the American Academy of PAs (AAPA) to award AAPA Category 1 CME credit for activities planned in accordance with AAPA CME Criteria. This activity is designated for **1 AAPA Category 1 CME credits**. Approval is valid until **12/13/2023**. PAs should only claim credit commensurate with the extent of their participation.

**CNE:** The Centers for Disease Control and Prevention designates this activity for **1 nursing contact hours**.

**CPE:** The Centers for Disease Control and Prevention designated this **(Knowledge-based)** event for pharmacists to receive **0.1 CEUs** in pharmacy education. The Universal Activity Number is **JA4008229-0000-22-120-L04-P** and enduring **JA4008229-0000-22-121-H04-P**.



Once credit is claimed, an unofficial statement of credit is immediately available on TCEOnline. Official credit will be uploaded within 60 days on the NABP/CPE Monitor.

**CEU:** The Centers for Disease Control and Prevention is authorized by IACET to offer **0.1** CEU's for this program.

**CECH:** Sponsored by the Centers for Disease Control and Prevention, a designated provider of continuing education contact hours (CECH) in health education by the National Commission for Health Education Credentialing, Inc. This program is designated for Certified Health Education Specialists (CHES®) and/or Master Certified Health Education Specialists (MCHES®) to receive up to **1.0** total Category I continuing education contact hours. Maximum advanced level continuing education contact hours available are **1**. Continuing Competency credits available are **1**. CDC provider number **98614**.

**AAVSB/RACE:** This program was reviewed and approved by the AAVSB RACE program for **1.0** hours of continuing education. Participants should be aware that some boards have limitations on the number of hours accepted in certain categories and/or restrictions on certain methods of delivery of continuing education. Please contact the AAVSB RACE program at [race@aavsb.org](mailto:race@aavsb.org) if you have any comments/concerns regarding this program's validity or relevancy to the veterinary profession.

**For Certified Public Health Professionals (CPH):** The Centers for Disease Control and Prevention is a pre-approved provider of Certified in Public Health (CPH) recertification credits and is authorized to offer **1** CPH recertification credits for this program.

**DISCLOSURE:** In compliance with continuing education requirements, all planners and presenters must disclose all financial relationships, in any amount, with ineligible companies over the previous 24 months as well as any use of unlabeled product(s) or products under investigational use.

CDC, our planners, and presenters wish to disclose they have no financial relationship(s) with ineligible companies whose primary business is producing, marketing, selling, re-selling, or distributing healthcare products used by or on patients.

Presentations will not include any discussion of the unlabeled use of a product or a product under investigational use, except Dr. Caroline Schrodt, Julia Petras, and Misty Elrod's discussion of melioidosis as a rare disease in the United States with no FDA-approved drugs specifically for treating melioidosis; given this, the antimicrobials recommended for treatment are considered off-label.

CDC did not accept financial or in-kind support from ineligible companies for this continuing education activity.



**The Emergency Risk Communication Branch in the Division of Emergency Operations, Center for Preparedness and Response is responsible for the management of all COCA products.**

For information about this update or other clinical issues, or to send your feedback, please contact us at [coca@cdc.gov](mailto:coca@cdc.gov)

- [CDC Clinician Outreach and Communication Activity Facebook page](#)—connect with COCA on Facebook
- [Clinician Outreach and Communication Activity](#)—resources for healthcare providers
- [COCA RSS Feed](#)—subscribe to be notified of conference calls, updates, and CDC guidance for health providers
- [Crisis & Emergency Risk Communication Training](#)—training program that draws from lessons learned during public health emergencies, and incorporates best practices from the fields of risk and crisis communication
- [Health Alert Network](#)—CDC's primary method of sharing cleared information about urgent public health incidents with public information officers; federal, state, territorial, and local public health practitioners; clinicians; and public health laboratories



CDC and HHS logos are the exclusive property of the Department of Health and Human Services and may not be used for any purpose without prior express written permission. Use of trade names and commercial sources is for identification only and does not imply endorsement by the U.S. Department of Health and Human Services.

Links to non-federal organizations are provided solely as a service to our users. Links do not constitute an endorsement of any organization by CDC or the federal government, and none should be inferred. CDC is not responsible for the content of the individual organizations.



**Centers for Disease Control and Prevention**

1600 Clifton Rd Atlanta, GA 30329 1-800-CDC-INFO (800-232-4636) TTY: 888-232-6348

[Questions or Problems](#) | [Unsubscribe](#)



**Alerting Message Specification Settings**

**Originating Agency:** Mississippi State Department of Health  
**Alerting Program:** MS Health Alert Network (MS HAN)  
**Message Identifier:** MSHAN-20221006-00587-ADV  
**Program (HAN) Type:** Health Alert  
**Status (Type):** Actual ()  
**Message Type:** Alert  
**Reference:** MSHAN-00587  
**Severity:** Unknown  
**Acknowledgement:** No  
**Sensitive:** Not Sensitive  
**Message Expiration:** Undetermined  
**Urgency:** Undetermined  
**Delivery Time:** 600 minutes

**Definition of Alerting Vocabulary and Message Specification Settings**

**Originating Agency:** A unique identifier for the agency originating the alert.

**Alerting Program:** The program sending the alert or engaging in alerts and communications using PHIN Communication and Alerting (PCA) as a vehicle for their delivery.

**Message Identifier:** A unique alert identifier that is generated upon alert activation (MSHAN-yyymmdd-hhmm-TTT (**ALT=Health Alert**, **ADV=Health Advisory**, **UPD=Health Update**, **MSG/INFO=Message/Info Service**)).

**Program (HAN) Type:** Categories of Health Alert Messages.

**Health Alert:** Conveys the highest level of importance; warrants immediate action or attention.

**Health Advisory:** Provides important information for a specific incident or situation; may not require immediate action.

**Health Update:** Provides updated information regarding an incident or situation; unlikely to require immediate action.

**Health Info Service:** Provides Message / Notification of general public health information; unlikely to require immediate action.

**Status (Type):**

- Actual: Communication or alert refers to a live event
- Exercise: Designated recipients must respond to the communication or alert
- Test: Communication or alert is related to a technical, system test and should be disregarded

**Message Type:**

- Alert: Indicates an original Alert
- Update: Indicates prior alert has been Updated and/or superseded
- Cancel: Indicates prior alert has been cancelled
- Error: Indicates prior alert has been retracted



**Reference:** For a communication or alert with a Message Type of “Update” or “Cancel”, this attribute contains the unique Message Identifier of the original communication or alert being updated or cancelled. “n/a” = Not Applicable.

**Severity:**

Extreme:	Extraordinary threat to life or property
Severe:	Significant threat to life or property
Moderate:	Possible threat to life or property
Minor:	Minimal threat to life or property
Unknown:	Unknown threat to life or property

**Acknowledgement:** Indicates whether an acknowledgement on the part of the recipient is required to confirm that the alert was received, and the timeframe in which a response is required (Yes or No).

**Sensitive:**

Sensitive:	Indicates the alert contains sensitive content
Not Sensitive:	Indicates non-sensitive content

**Message Expiration:**

Undetermined.

**Urgency:**

Undetermined. Responsive action should be taken immediately.

**Delivery Time:**

Indicates the timeframe for delivery of the alert (15, 60, 1440, 4320 minutes (.25, 1, 24, 72 hours)).