

WHAT IS AFM?

A rare but serious condition affecting the nervous system, specifically the spinal cord. **Seek medical care right away if your child has any of these symptoms.**

It can cause sudden muscle weakness and loss of muscle tone.



SYMPTOMS

Sudden Onset – Starts with sudden weakness in one or more arms and legs.

Loss of Reflexes/Facial Drooping – Facial movements and swallowing may be affected.

Respiratory Difficulties – Only in severe cases

CAUSES

Causes – viral infections as well as environmental toxins and genetic factors.

How to Spot Symptoms of

Acute Flaccid Myelitis in Your Child

Acute flaccid myelitis, or AFM, is a rare but serious condition that affects the nervous system.

Symptoms of AFM



Difficulty moving the eyes or drooping eyelids



Facial droop or weakness

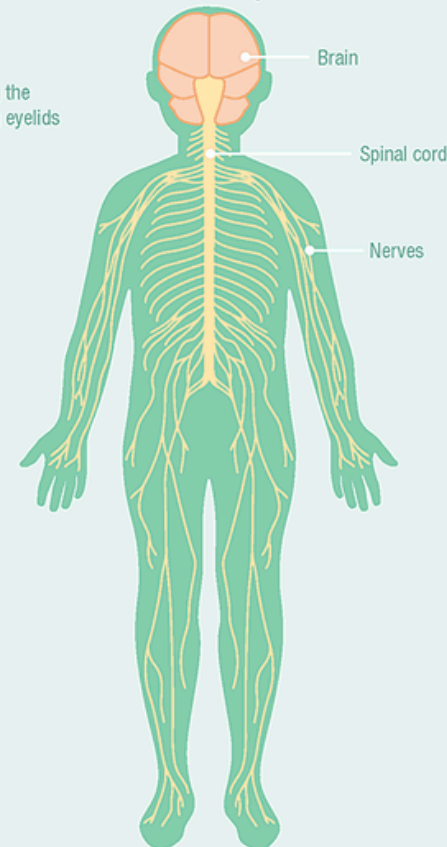


Difficulty with swallowing or slurred speech



Sudden arm or leg weakness

The Nervous System



Seek medical care right away if your child has any of these symptoms.



U.S. Department of
Health and Human Services
Centers for Disease
Control and Prevention

www.cdc.gov/acute-flaccid-myelitis

AFM

ACUTE FLACCID MYELITIS

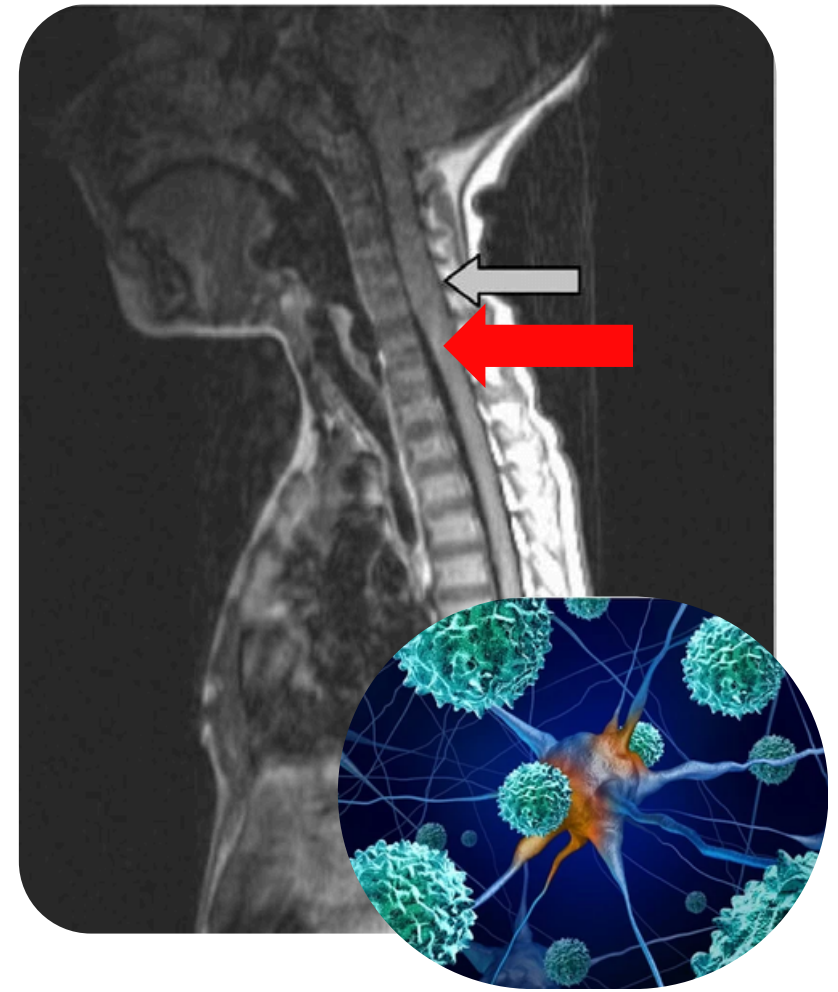
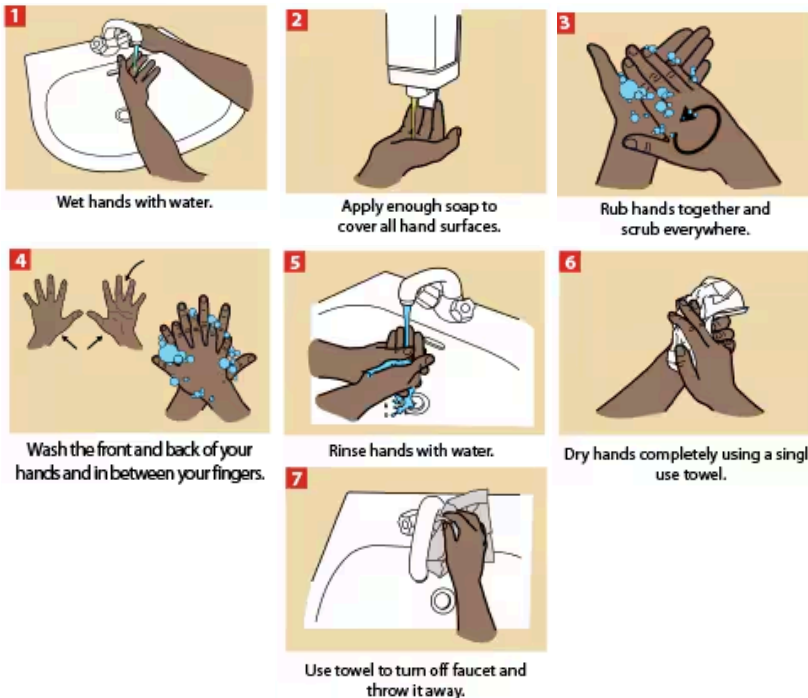
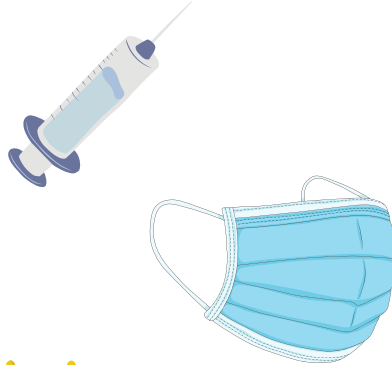
July 2025

TREATMENT

Physical therapy, occupational therapy, and pain management

PREVENTION

- Respiratory illness vaccinations
- Avoid sick individuals
- Clean surfaces
- Washing Hands



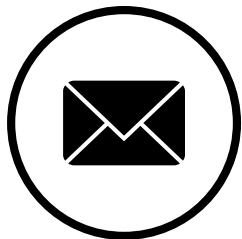
The MRI illustrates spinal cord swelling. Seek help from your healthcare professional with concerns.



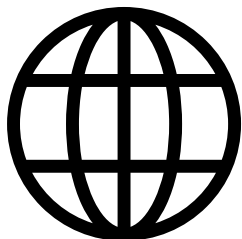
Contact



Office of Epidemiology:
601-576-7725



epidemiology.office@msdh.ms.gov



[CDC's webpage on AFM](#)

[MSDH's webpage on AFM](#)



Stay Informed About Health Issues

Look out for AFM signs and symptoms

**Limb weakness
and paralysis**

The most common symptom of AFM



Some people may experience



Recent or current
respiratory illness



Fever



Pain or numbness
in the limb(s)



Gait
difficulty



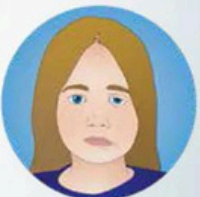
Headache



Back or
neck pain



Difficulty talking
or swallowing



Neck or facial
weakness