

HONOR ROLL PROGRAMS:

Transformation of Community Health with CHDs

The Center aims to transform public health services in Mississippi into a sustainable model that enhances wellness for all. By collaborating with leaders across programs, operations, clinical care, and health tech, we are reimagining how services are delivered to improve patient outcomes and clinical team experiences. Our focus is on four strategic priorities: 1) driving practice transformation; 2) fostering communication and community integration; 3) advancing an equity-centered public health data system; and 4) optimizing a comprehensive data and evaluation infrastructure.

Acute Care Systems

The MSDH designation of Trauma, STEMI, and Stroke Centers involves a rigorous process to ensure specialized care, staffing, equipment, and response times meet strict standards. Regular audits and adherence to clinical guidelines are required. Systems of Care help rural hospitals address crises by creating coordinated networks that improve access to specialized resources. By connecting rural hospitals with larger centers through telemedicine and standardized protocols, patient transfers are streamlined, ensuring timely treatment. This collaboration improves outcomes while supporting rural facilities with training, funding, and shared expertise.

Syphilis Task Force

The State Health Officer established the Syphilis Task Force to gather information on innovative practices and policies, expand communication efforts and further develop both community and clinical partnerships to address syphilis and congenital syphilis.

The effort has led to increased population education and increased testing and treatment in the state for syphilis and congenital syphilis.

Health Facilities Licensure

The Bureau of Health Facilities Licensure and Certification regulates and licenses hospitals, nursing homes, hospices, home health facilities, assisted living facilities and other specialized care facilities in Mississippi. It also certifies facilities for Medicare and Medicaid participation. By ensuring compliance with state and federal standards, the bureau continuously enhances quality of care, safeguarding patients and residents from abuse and neglect.

2024

PUBLIC HEALTH REPORT CARD



MISSISSIPPI STATE DEPARTMENT OF HEALTH



MISSISSIPPI STATE MEDICAL ASSOCIATION

#1 Killer

Heart Disease

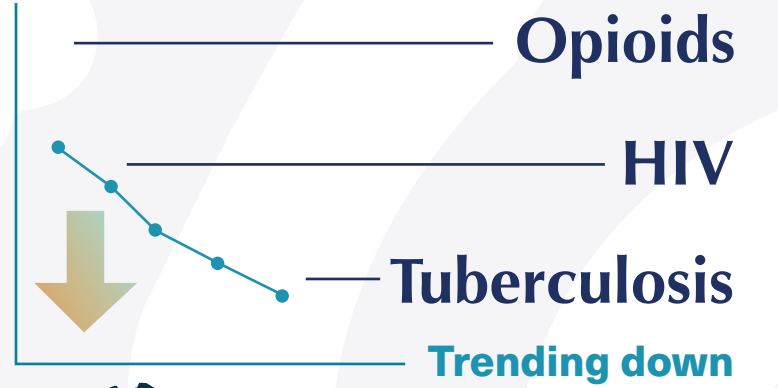
2024 Birth and Death Trends

Deaths outpaced births.

Deaths	34,040
Births	33,310

Potential years of life lost before age 75 due to preventable deaths:

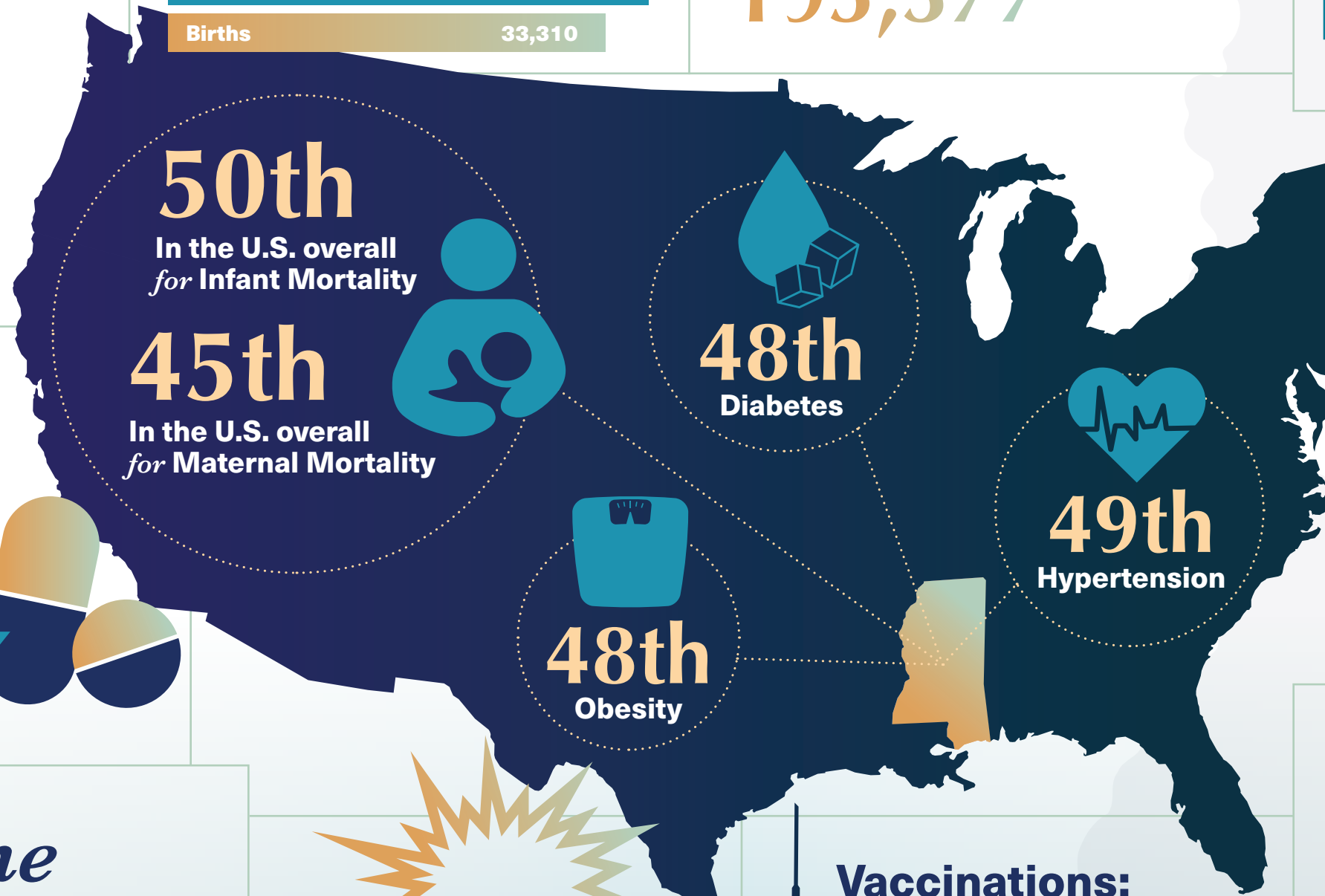
195,377



Opioid Deaths

continue to decline

A total of **496** opioid-related deaths occurred in 2023 with Mississippi having the **14th lowest** opioid related overdose death rate in the nation.



Family Violence Prevention and Domestic Violence Programs:

5,244 individuals served

VAWA Programs:

7,734 individuals served

VOCA:

18,428 individuals served

Total Individuals Served:

31,406

Leading the Nation in Firearm Deaths

In 2023, a total of **844** firearm-related deaths occurred among Mississippi residents, placing Mississippi with the **highest** firearm-related mortality rate of all 50 states.

Accidents !

Trending Down !



Vaccinations: Ranked 3rd Nationwide

Mississippi's 2023-2024 school-required vaccination rates are **greater than 97.5%** remaining well above the National Average of 91%.

Intimate Partner Violence

Among women who recently had a live birth, **4.6%** reported experiencing physical abuse—such as being pushed, hit, slapped, kicked, choked, or otherwise hurt in any way—by their current or former husband or partner **during the 12 months leading up to their pregnancy.**

Among women who recently had a live birth, **3.1%** reported being physically harmed—such as being hit, pushed, or otherwise hurt in any way—by their current or former husband or partner **during their most recent pregnancy.**



(2021 MS PRAMS)