

**Mississippi State Penitentiary**  
**Parchman, Mississippi**  
**2025 Sanitation Inspection Report**  
**October 06-10 2025**

**Conducted by:**



MISSISSIPPI STATE DEPARTMENT OF HEALTH

**Institutional Services**



## MISSISSIPPI STATE DEPARTMENT OF HEALTH

December 5, 2025

The Honorable Tate Reeves  
Governor of the State of Mississippi  
Walter Sillers State Office Building  
550 High Street – 19<sup>th</sup> Floor  
Jackson, Mississippi 39201

**RE:** The 2024 Mississippi State Penitentiary at Parchman Annual Sanitation Inspection Report  
October 6-10, 2025

Governor Reeves:

In compliance with Section 47-5-94, of the Mississippi Code of 1972, we are submitting the attached report regarding the inspection of the Mississippi State Penitentiary at Parchman, Mississippi.

The 2024 Sanitation Inspection was conducted by Rayford E. Horton, Public Health Officer, of the Mississippi Department of Health (MSDH), Division of Institutional Services.

The Mississippi State Department of Health is thankful for the opportunity to promote and protect the health of Mississippians. Please contact our Office of Environmental Health at (601) 364-5780 with any comments or concerns.

Sincerely,

*Daniel Edney, MD*

Daniel Edney, MD, FACP, FASAM  
State Health Officer

Attachment

pc: The Honorable Lynn Fitch, State Attorney General  
Bureau of Buildings, Grounds and Real Property Management  
State of Mississippi Fire Marshal  
Burl Cain, Commissioner, MS Department of Corrections  
Jeworski Mallet, Deputy Commissioner of Institutions  
Mark McClure, Superintendent, Mississippi State Penitentiary

**Mississippi State Penitentiary**  
**Hwy. 49 West**  
**Parchman, Mississippi**  
**2025 Sanitation Inspection Report**  
**(October 6-10, 2025)**

**Inspected By:**  
**Rayford Horton, Environmental Admin. I**  
**INSTITUTIONAL SERVICES**  
**P.O. BOX 1700**  
**JACKSON, MISSISSIPPI 39215-1700**  
**PHONE 601/576-7693**

**Environmental Sanitation Report**

**Area I**  
**(Unit 29 Gym/Barbershop, Kitchen)**

<b>Deficiency</b>	<b>Response</b>
<b>Unit 29 Bldg. A / Zone A</b>	
<b>Cell #3 Observed Oxygen in use with no warning signs</b>	
Cell #13 Lavatory sink hot water pressure is low	
Water fountain does not work	
Cell #18 and 19 Lavatory sink leaks from the bottom	
Floor drain is stopped up	
<b>Unit 29 Bldg. A / Zone B</b>	
Cell #50 and #55 light is out	
Water fountain does not work	
Cell #58 Lavatory sink cold water runs constantly	
Cell #61 Lavatory sink button is stuck	
Cell #63 Lavatory sink water pressure is high	
<b>TOP TIER</b>	
Cell #88 light is out	
Cell #87 Lavatory sink does not work	
Cell #80 Lavatory sink cold water runs constantly	
Cell #79 Lavatory sink cold water does not work	
Cell #76 has no light fixture	

Cell #9 light is out/Lavatory sink water pressure is low	
Cell #14 receptacle is missing from the socket	
Cell #16 Lavatory sink hot water pressure is low	
Cell #26 Lavatory sink cold water button missing	
Exit light missing from wall with exposed wires	
Cell #38 light is out	
<b>Unit 29 Bldg. H / Zone B</b>	
No discrepancies downstairs	
<b>TOP TIER</b>	
Cell #30 light is out	
Cell #29 Lavatory sink faucet is loose	
<b>Unit 29 Bldg. I</b>	
<b>CLOSED</b>	
<b>Unit 29 Bldg. J / Zone A</b>	
Cell #11 Lavatory sink water pressure is low	
Cell #19 Lavatory sink hot water runs constantly	
<b>Unit 29 Bldg. J / Zone B</b>	
Cell #39 Lavatory sink cold water pressure is low	
<b>Unit 29 Bldg. K</b>	
<b>CLOSED</b>	
<b>Unit 29 Bldg. L</b>	
Water is leaking from drainpipe in ceiling	
<b>Unit 29 Bldg. L / Zone A</b>	
Cell #2 Commode does not work	
Cell #5 light is out	
Cell #13 Commode leaks from the bottom	
Cell #36 light is out	
Cell #31 Lavatory sink water pressure is low	
Cell #26 light is out	
Water is leaking from pipe chase into the zone	
<b>Unit 29 Bldg. L / Zone B</b>	
Cell #15 Light is out	
Cell #36 Light is out	
Cell #32,33, and 34 Lights are out	
Cell #23 receptacle is torn out the socket	
<b>UNIT 29 Kitchen</b>	
No discrepancies were found during this inspection	
<b>Unit 29 Gym</b>	
Six (6) lights are out	
2 <sup>nd</sup> Lavatory sink cold water runs constantly	
Sign on door needs correcting from Women bathroom to Inmate Bathroom	
Barbershop no discrepancies were found	

## Area II

2 <sup>nd</sup> and 4 <sup>th</sup> Showers do not work	
<b>Unit 30 Library/ ABE School</b>	
No Discrepancies found	
<b>Unit 30 Multipurpose School</b>	
5 <sup>th</sup> and 6 <sup>th</sup> urinals are missing from the wall	
4 <sup>th</sup> Lavatory sink hot water does not work	
<b>FOOD SERVICE SANITATION-30 Kitchen</b>	
No discrepancies were found during this inspection	
<b>MSP Unit #30 Gym</b>	
One (1) light is out and observed birds flying around inside	
1 <sup>st</sup> and 6 <sup>th</sup> Lavatory sinks do not work in the inmate bathroom	
3 <sup>rd</sup> commode is stopped up	

### Area III, Unit 28

DEFICIENCY	RESPONSE
<b>MSP UNIT 28</b>	
<b>Unit 28 Kitchen</b>	
Three (3) Compartment sink sanitizer was being manually poured from mayonnaise jug and over-sanitizing the dishware	
<b>Unit 28/ Zone A</b>	
No discrepancies noted	
<b>Unit 28 / Zone B</b>	
Metal Cover for pipe chase was detached and propped against the wall	
<b>Unit 28 / Zone C</b>	
Ceiling leaks above beds in cube #97-144	
1 <sup>st</sup> and 2 <sup>nd</sup> showers do not work	
<b>Unit 28 / Zone D</b>	
1 <sup>st</sup> and 2 <sup>nd</sup> showers do not work	
Light out above beds in cube #181-185	
Ceiling leaks in rooms #31, 33, and 36	

### Area III, Unit 26

<b>Processing</b>	
No discrepancies noted	
<b>DEFICIENCY</b>	<b>RESPONSE</b>
<b>Front Vocational School Kitchen</b>	
No discrepancies were found during this inspection	
<b>DEFICIENCY</b>	<b>RESPONSE</b>
<b>Unit 33</b>	
Observed dogs living inside the building with the inmates	
<b>DEFICIENCY</b>	<b>RESPONSE</b>
<b>The Place</b>	
No discrepancies were found during this inspection	

### 32 Laundry

<b>DEFICIENCY</b>	<b>RESPONSE</b>
Dryer #1 is out of order	
Dryers #4 and #7 lint compartments needed cleaning	

### Unit 42 (Infirmary)

<b>DEFICIENCY</b>	<b>RESPONSE</b>
Three (3) compartment sink did not have chemicals for sanitizing any dishware	
Observed stacks of wooden pallets and debris at dock area where food is transported into building	
<b>Unit 42 Laundry Room</b>	
Observed melted plastic containers stored on top dryer while dryer was in use	
<b>South Ward</b>	
Observed a soiled diaper left beside tub in offender bathroom	
Observed a soiled bed pad left in the shower	
Room #202 Lavatory sink water pressure is low	
Room #212 Light does not work	
Room #211 Commode is stopped up and light does not work	
Room #210 light fixture hanging	
Room #208 Lavatory sink cold water does not work	
<b>West Ward</b>	
<b>Observed Oxygen in use with no warning signs</b>	
Bottom wall is deteriorating, and baseboard needs replacing around the wall	
<b>East Ward</b>	



<b>Unit 31 Bldg. / Zone A</b>	
No discrepancies noted	
<b>Unit 31 Bldg. / Zone B</b>	
No discrepancies noted	
<b>Unit 31 Bldg. / Zone C</b>	
One (1) light is out in the hall area	
<b>Unit 31 Bldg. / Zone D</b>	
2 <sup>nd</sup> commode is stopped up	

### Unit #17

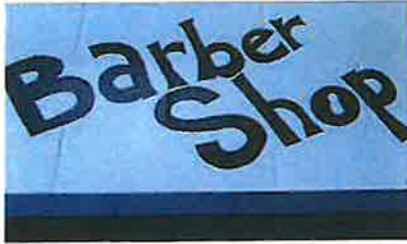
DEFICIENCY	RESPONSE
<b>Unit #17 Kitchen</b>	
No discrepancies were found during this inspection	
<b>Unit 17 Bldg. / Zone A</b>	
No discrepancies noted	
<b>Unit 17 Bldg. / Zone B</b>	
No discrepancies noted	
<b>Unit 17 Bldg. / Zone C</b>	
Cell #14 light is out	
<b>Unit 17 Bldg. / Zone D</b>	
Cell #10 Lavatory sink does not work	





Biannual Health Inspection for Area III/Unit 28  
October 6-10, 2025

**Unit 28 Barbershop**



**Unit 28 A-Zone Dayroom**



**Unit 28 B-Zone Dayroom**



Metal Wall Panel Detached

**Biannual Health Inspection for Area III/Unit 28  
October 6-10, 2025**



1<sup>st</sup> and 2<sup>nd</sup> showers are inoperable/Light out for rooms 181-185/Leaking from the ceiling for rooms 31-33-and 36/Wet Vacuums were present



Biannual Health Inspection for Area IV/Unit 33  
October 6-10, 2025

**Unit 33**



**Pre-Release**



Sink #1 is inoperable/Sink #4 no hot water knob/No hot water for sinks/1<sup>st</sup> Urinal is stopped up



Biannual Health Inspection for Area I/Unit 29  
October 6-10, 2025

**Unit 29A Building A-Zone**



Unit 29A Building Entry



Unit 29A Building Dayroom Area



Unit 29A Building Shower Area



A-Zone Cell #1 Oxygen Machine



A-Zone Inoperable Water Fountain



A-Zone Cell #18 and Cell #19 Leaking Water at the base



A-Zone Floor Drain was clogged

**Unit 29A Building B-Zone**



Biannual Health Inspection for Area I/Unit 29  
October 6-10, 2025

Bathroom and Shower Areas for Unit 29C A-Zone

Unit 29C Building B-Zone



Unit 29C B-Zone Dayroom Area



Unit 29C B-Zone Televisions



Unit 29C B-Zone Microwaves



Bathroom and Shower Areas Unit 29C Building B-Zone



Bed 116-117 Missing Light Fixture



Ceiling Panel Need Replacing On B-Zone



Sink by Bed 105 Inoperable



Biannual Health Inspection for Area I/Unit 29  
October 6-10, 2025

Unit 29F Building B-Zone



Unit 29F B-Zone Dayroom Area/Televisions and Microwaves



Shower and Bathroom Areas for Unit 29F B-Zone    Light Out in Shower    Exposed Wires for bed 97/98

Unit 29 Division I Yard



Food thrown on yard feeding birds

Unit 29 Gymnasium/Barbershop



2<sup>nd</sup> Sink Cold Water Won't Shut Off



Biannual Health Inspection for Area I/Unit 29  
October 6-10, 2025

Unit 29H Building A-Zone Dayroom and Shower Areas



Exit Light Missing by Showers

Unit 29H Building B-Zone



Unit 29H Building B-Zone Dayroom and Shower Areas



Cell #29 has a loose faucet

Unit 29J Building A-Zone



### Unit #42 Infirmary

#### Laundry Room



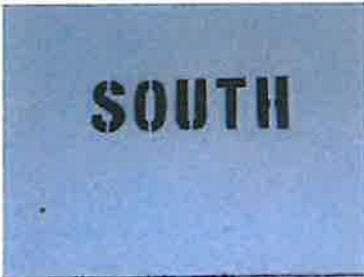
Personal items stored on dryer/Fire hazard

#### Back Dock



Pallets need to be removed/Outside area need cleaning

#### Southward



Inmate shower and bathroom need cleaning for soiled diaper near tub and bed pad in the shower



Unit 42 Westward Dayroom and Shower area



Room 229 has a water leak under the sink/ Unit 42 back desk water fountain is leaking

## **Unit 17**

### **Unit 17 Kitchen/Kitchen Bathroom**



Dining area for Unit 17

### **Visitation and Dayroom Areas for Unit 17**



### **A-D Zone Showers**





Biannual Health Inspection for Area II/Unit 30  
October 6-10, 2025

**Unit 30 Gymnasium/Barbershop**



1<sup>st</sup> sink is inoperable

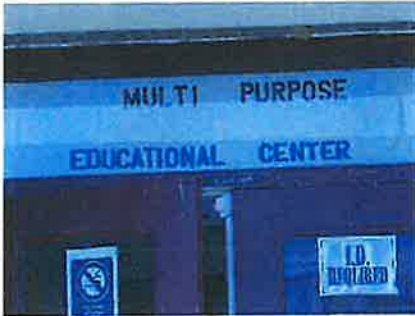
Unit 30 Gymnasium 3<sup>rd</sup> commode stopped up

**Unit 30 Kitchen**



Biannual Health Inspection for Area II/Unit 30  
October 6-10, 2025

**Unit 30 Education Center**



Hot water out in sink #4/Education Center Urinal 5 and 6 Missing

**Unit 30 Library**



Biannual Health Inspection for Area II/Unit 30  
October 6-10, 2025



Cold water not working for sink #6/Low water pressure for hot water

Sink #7 has low water pressure (hot)

**Unit 30B Building**



Unit 30B A-Zone 7<sup>th</sup> sink inoperable





Biannual Health Inspection for Area II/Unit 30  
October 6-10, 2025



1st sink hot water pressure is low/Shower #4 constantly runs



1<sup>st</sup> sink is inoperable/2<sup>nd</sup> sink water runs constantly

**Unit 30D Building**



### Unit 25



### Unit 25 Mechanical Room



Front door of mechanical room and inside boiler room needs cleaning

### Unit 25 Kitchen





Urinal is missing from the wall/Sink 1 and 3 faucet is broken/Sink 5 has a low water pressure

#### Unit 25 D-Zone



D-Zone dayroom area/Mold present in the ceiling (needs cleaning)/Sink 1 runs and Sink 2 low pressure



Unit 25 outside recreational area