



MISSISSIPPI STATE DEPARTMENT OF HEALTH

December 4, 2024

The Honorable Tate Reeves
Governor of the State of Mississippi
Walter Sillers State Office Building
550 High Street – 19th Floor
Jackson, Mississippi 39201

RE: The 2024 Mississippi State Penitentiary at Parchman Annual Sanitation Inspection Report
November 18-20, 2024

Governor Reeves:

In compliance with Section 47-5-94, of the Mississippi Code of 1972, we are submitting the attached report regarding the inspection of the Mississippi State Penitentiary at Parchman, Mississippi.

The 2024 Sanitation Inspection was conducted by Rayford E. Horton, Public Health Officer, of the Mississippi Department of Health (MSDH), Division of Institutional Services.

The Mississippi State Department of Health is thankful for the opportunity to promote and protect the health of Mississippians. Please contact our Office of Environmental Health at (601) 364-5780 with any comments or concerns.

Sincerely,

Daniel Edney, MD, FACP, FASAM
State Health Officer

Attachment

pc: The Honorable Lynn Fitch, State Attorney General
Bureau of Buildings, Grounds and Real Property Management
State of Mississippi Fire Marshal
Burl Cain, Commissioner, MS Department of Corrections
Jeworski Mallet, Deputy Commissioner of Institutions
Mark McClure, Superintendent, Mississippi State Penitentiary

Mississippi State Penitentiary
Parchman, Mississippi
2024 Sanitation Inspection Report
November 18-20, 2024

Conducted by:



MISSISSIPPI STATE DEPARTMENT OF HEALTH

Institutional Services

**Mississippi State Penitentiary
Parchman, Mississippi
2024 Biannual Health Inspection Report
(November 18-20, 2024)**

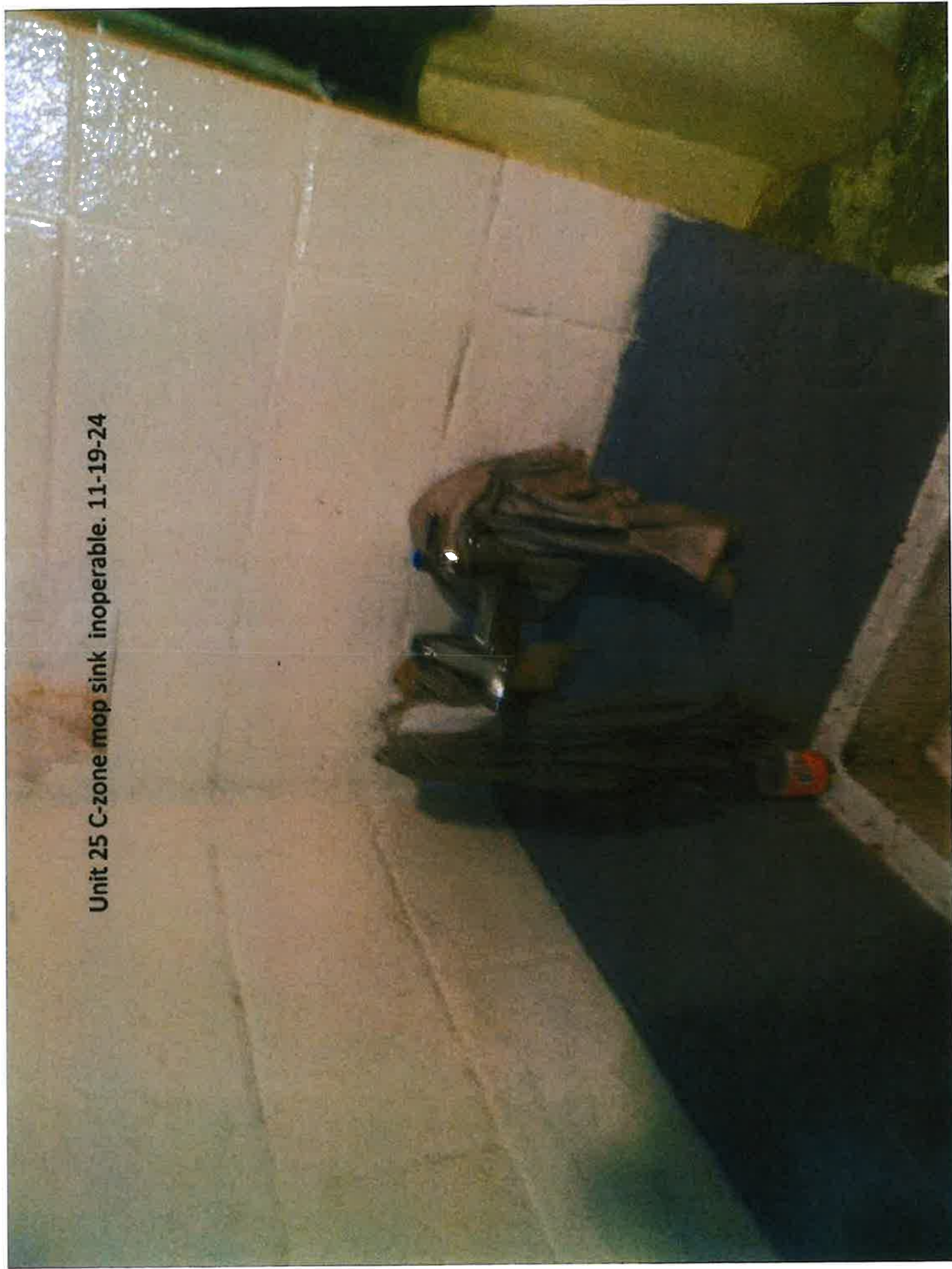
Facility Name & Address:		Inspected By:	
Mississippi State Penitentiary Hwy. 49 West Parchman, Mississippi 38768		Rayford Horton, Public Health Officer INSTITUTIONAL SERVICES P.O. BOX 1700 JACKSON, MISSISSIPPI 39215-1700 PHONE 601/576-7693	
Environmental Sanitation <div></div>		Inspection Date: November 18-20, 2024	
Area I & II (Units 29, 25, 26A-B & Kitchen, 28, 30A-D, 30 Gym, Education, 31, 42 and 33)			
Deficiency		Response	
Unit 28 (Zone A)			
No discrepancies.			
Unit 28 (Zone B)			
Shower floor needs replacing			
Unit 28 (Zone C)			
Beds 131-136 sink needs mounting			
Unit 28 (Zone D)			
No discrepancies.			
Deficiency			
Unit 28 Kitchen (Food Service/Sanitation)			
Dishwasher must be operated manually. WO#74431			
Steam warmer gas pilot does not work had to be manually ignited.			
No critical food violations were found.			
Unit 28 Barbershop			
No discrepancies.			
Unit 31 Zone A			
Shower #3 water constantly runs			
Shower #4 needs a shower head			
Window pane is cracked beside bed #12			
6 th sink has no hot water			
Sink beside the shower has no knobs			
Unit 31 Zone B			

Unit 30-C Bldg. A Zone	
Sinks 1-3 and 7 water runs constantly	
Handicap shower water runs constantly	
Handicap sink water runs constantly	
Zone is cluttered with excess debris	
Unit 30-C Bldg. B Zone	
2 nd sink is stopped up	
7 th sink water pressure is high and sprouts onto the floor	
Water fountain constantly runs	
Zone is cluttered with excess debris	
Water Leaks behind bed 206 when it rains	
Unit 30-D Bldg. A Zone	
Mold growing in the ceiling bathroom area	
Zone is cluttered with excess debris	
Unit 30-D Bldg. B Zone	
Mold growing in the ceiling in the bathroom area	
1 st sink water pressure is high and sprouts onto the floor	
1 st shower on the right, and 1 shower on the left do not work	
Zone is cluttered with excess debris	
Exit lights are inoperable at the back of the zone	
Water leaks over beds 127-128 when it rains	
Unit 30 Hallway	
No discrepancies were noted	
Unit 30 Barbershop	
No barbercide for sanitizing hair clippers.	
Unit 30 Library/ABE School	
No discrepancies were noted.	
Unit 30 Alcohol and Drug School	
5 th and 6 th urinals are missing from the wall	
No hot water in the inmate bathroom.	
Unit 30 GYM	
1 st and 6 th sinks do not work	
Low water pressure on 1st and 3rd inmate commode	
Unit 29 A	
Unit 29 Bldg. A / Zone A	
The back door exit sign light does not work.	
Unit 29 Bldg. A / Zone B	
No discrepancies were noted.	
Unit 29 Bldg. B / Zone A	
Building closed.	Building closed.
Unit 29 Bldg. B / Zone B	
Building closed	Building closed.
Unit 29 Bldg. C	

Cell #27 lavatory sink button is inoperable	
Cell #29 lavatory sink hot water button is inoperable	
Cell #37 lavatory sink hot water button is inoperable	
Unit 29 Bldg. I / Zone A	
Building Closed	Building Closed
Unit 29 Building I/Zone B	
Building Closed	Building Closed
Unit 29 Bldg. J / Zone A	
Bottom Tier	.
2 nd Exit light is inoperable	
Cell #9 water continues to run	
Top Tier	
No discrepancies were noted.	
Unit 29 Bldg. J / Zone B	
Bottom Tier	
No discrepancies were noted.	
Top Tier	
Cell #26 electrical receptacle does not work	
Cell #27 has one light out	
Exit light inoperable	
Unit 29 Bldg. K / Zone A	
Building Closed	Building Closed
Unit 29 Bldg. K / Zone B	
Building Closed	Building Closed
Unit 29 Bldg. L / Zone A	
Bottom Tier	
Cell #2 toilet will not flush	
Top Tier	
Cell #24 lights are inoperable	
Cell #26 lights are inoperable	
Cell #35 lavatory sink does not work	
Unit 29 Bldg. L / Zone B	
Bottom Tier	
Cell #15 water leaks in when it rains	
Top Tier	
No discrepancies were noted	
UNIT 29 Kitchen	
Three compartment sink sanitizer setup was wrong.	Note: Label compartments for the sink
Dead mouse found in closed cooler #3	
Dry storage food items were not dated	
Unit 29 Gym/Barbershop	
Charcoal and lighter fluid stored inside the barbershop	
A gallon of milk found stored in the ice machine	Corrected on the spot
Sink #1 is inoperable and Sink #2 has a low water pressure in the inmate bathroom	
Barbershop was using germicide(non-hair product) to sanitize clipper blades, No barbicide on-site of barbershop	

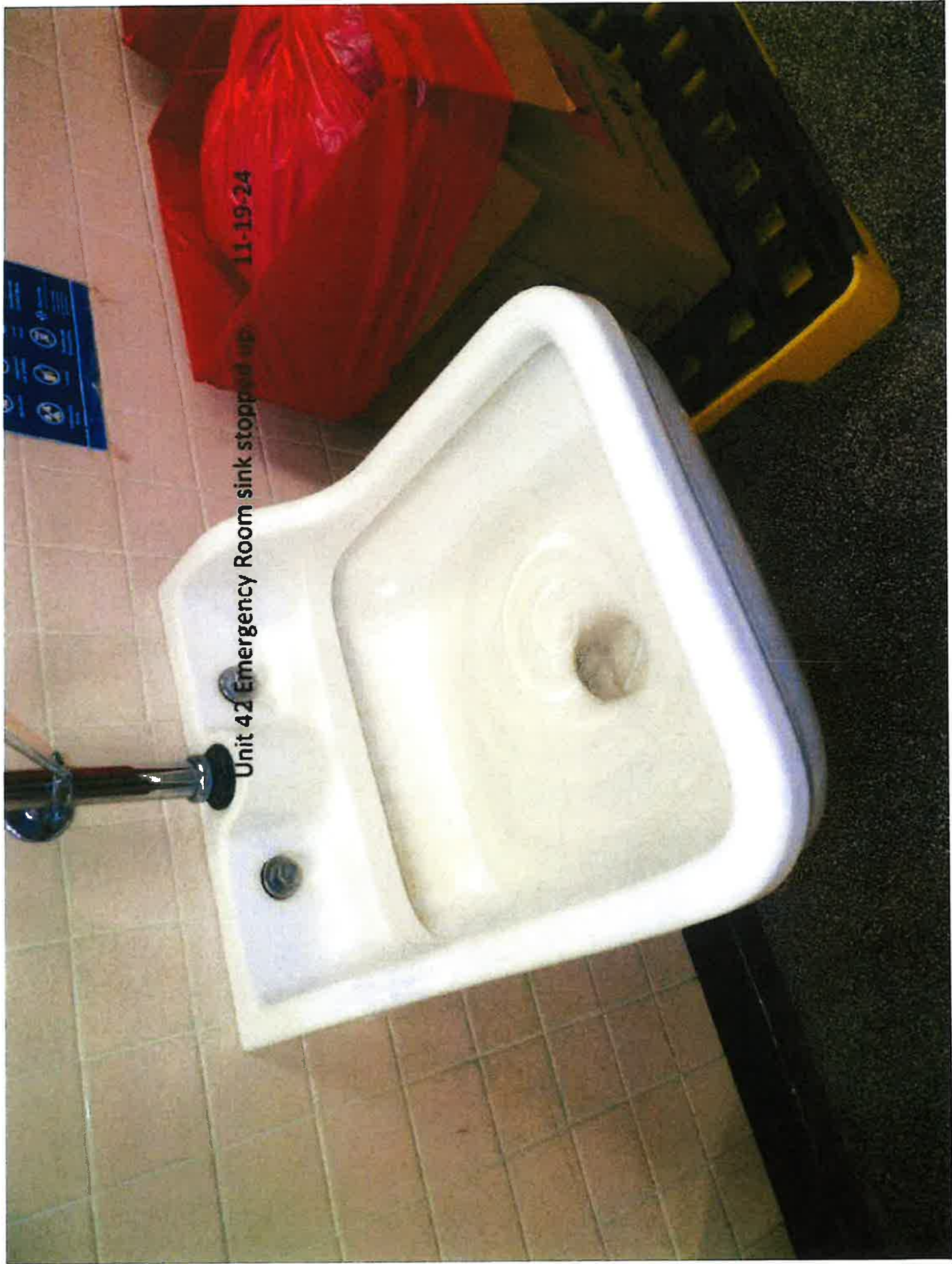
E-Zone	
Closed	
MSP Unit #26 B Building	All inmates who use wheelchairs need their own shower chair.
Zone-A	
B-Zone	
Need light near toilet area	
Cubicle 30-36 light is missing	
Water fountain missing cover	
C-Zone	
Turn HVAC to fan for ventilation.	
D-Zone	
Beds 201-202 light is out in the ceiling	
No shut off water in the showers	
E-Zone	
No discrepancies.	
Unit 26 Kitchen-FOOD SERVICE SANITATION	
No critical food service violations.	
Processing Kitchen	
No critical food violations were found	Note: Drain system needs to be cleaned/flushed periodically
Cold Storage	
Breakdown room needs cleaning	Corrected on the spot
Evidence of rodents being present in the breakdown room	Corrected on the spot
Keep clothes and food in the breakdown room separate	Corrected on the spot
Raw vegetables were found next to the butter (cross contamination)	Corrected on the spot
Several boxes of expired milk with the date of 11-12-2024 was delivered by food merchant	
Unit 33	
No discrepancies were found	
MPIC Kitchen	
No critical food violations were found.	
The Place	
No critical food violations were found.	

Unit 25 C-zone mop sink inoperable. 11-19-24





Unit 30D b-zone both exit lights inoperable at back of
the zone. 11-19-24

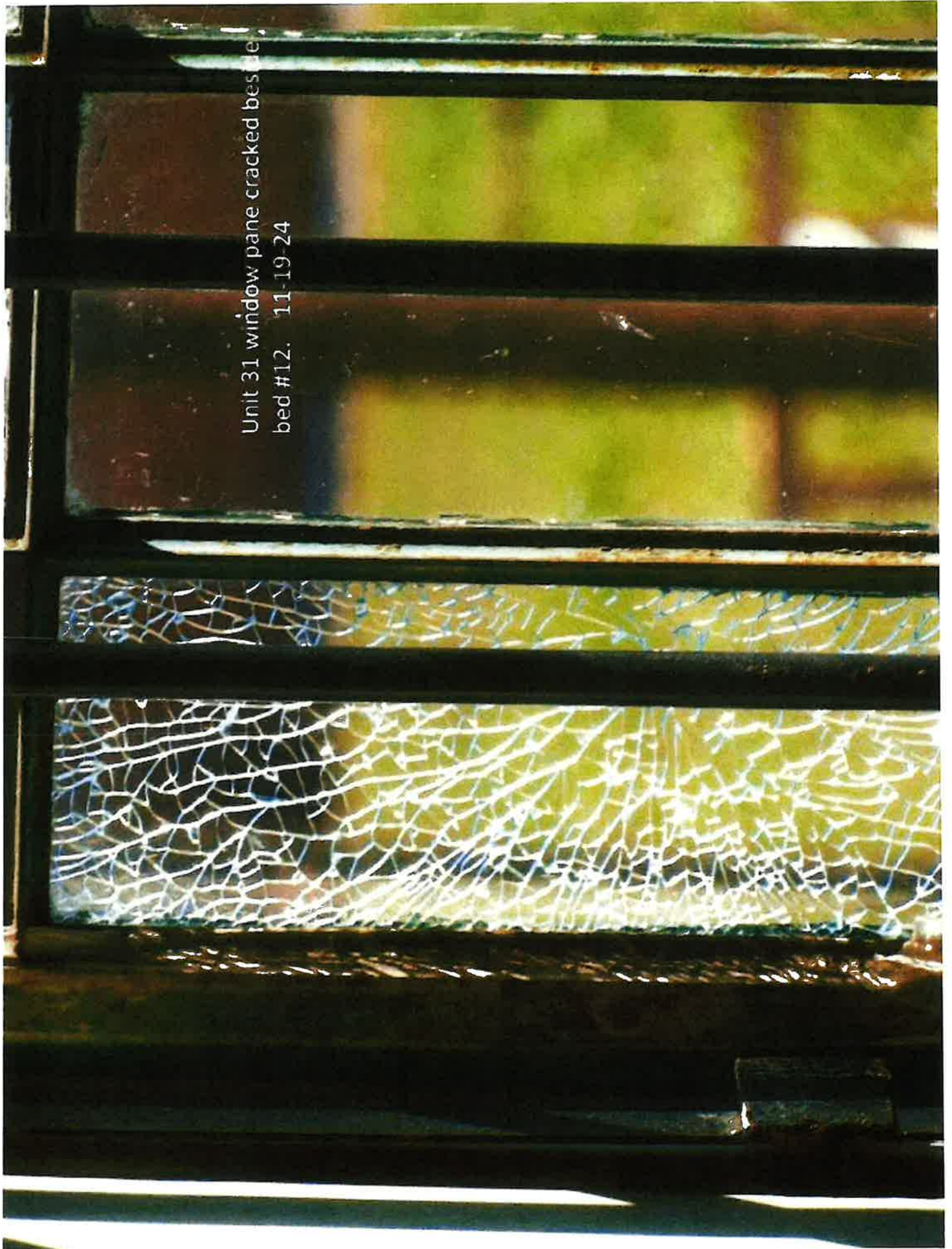


Unit 42 Emergency Room sink stopped up 11-19-24

Unit 42 lights need covers above doors with exposed wires in emergency room.
11-19-24



Unit 31 window pane cracked beside
bed #12. 11-19-24





Unit 29G A-zone both exit lights out. 11-19-24

Unit 29A a-zone exit light missing. 11-18-24

CAUTION
This equipment has more than one
grounding connection point. To
prevent fire or electric shock,
do not connect the ground circuit
to any other ground point.
See the instructions for
proper wiring.

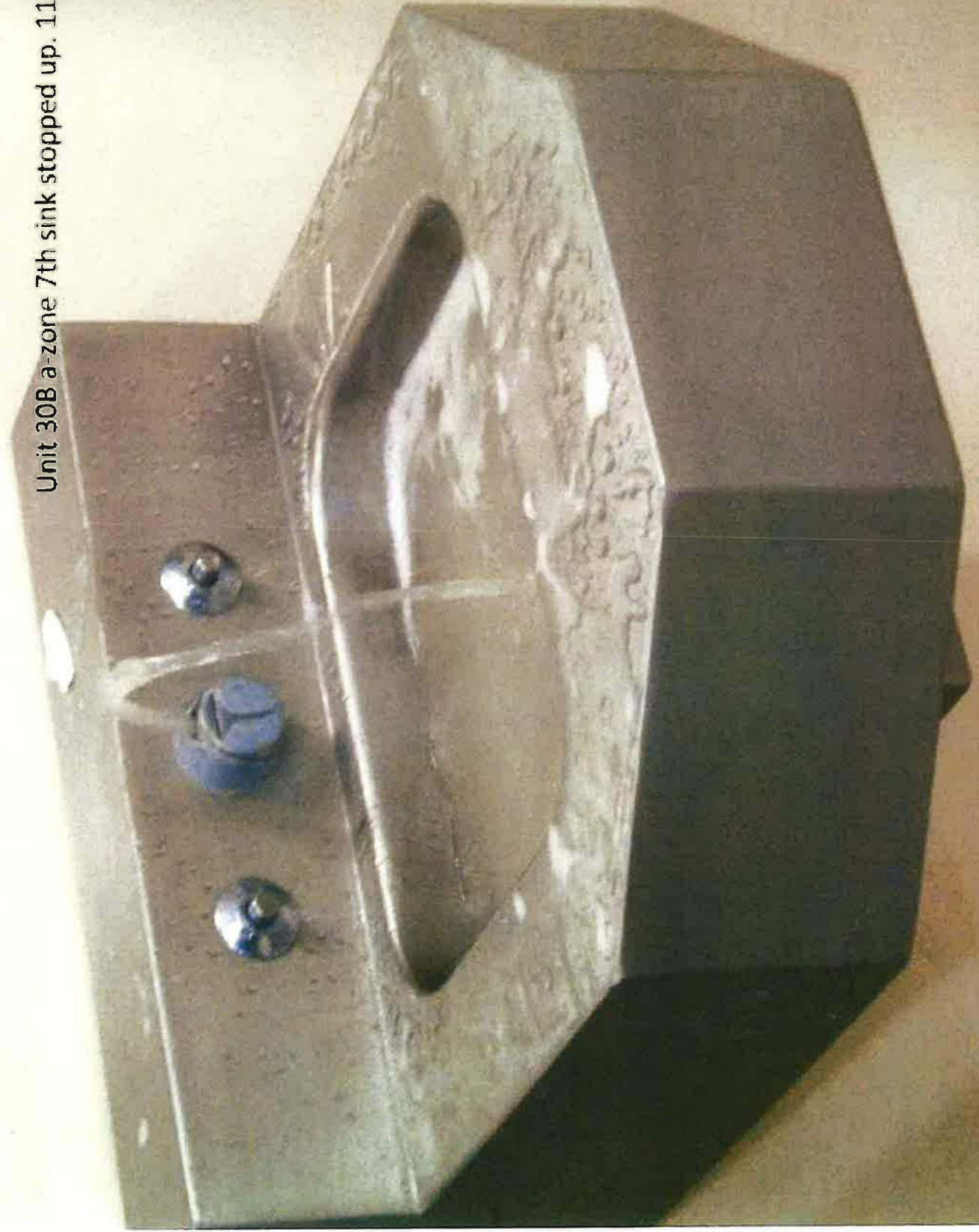
Unit 29F B-zone urinal on bottom inoperable.
11-18-24



Unit 30A a-zone 6th sink has no hot water. 11-19-24



Unit 30B a-zone 7th sink stopped up. 11-19-24



Unit 30B B-ZONE 2ND URINAL STOPPED UP.11-19-24



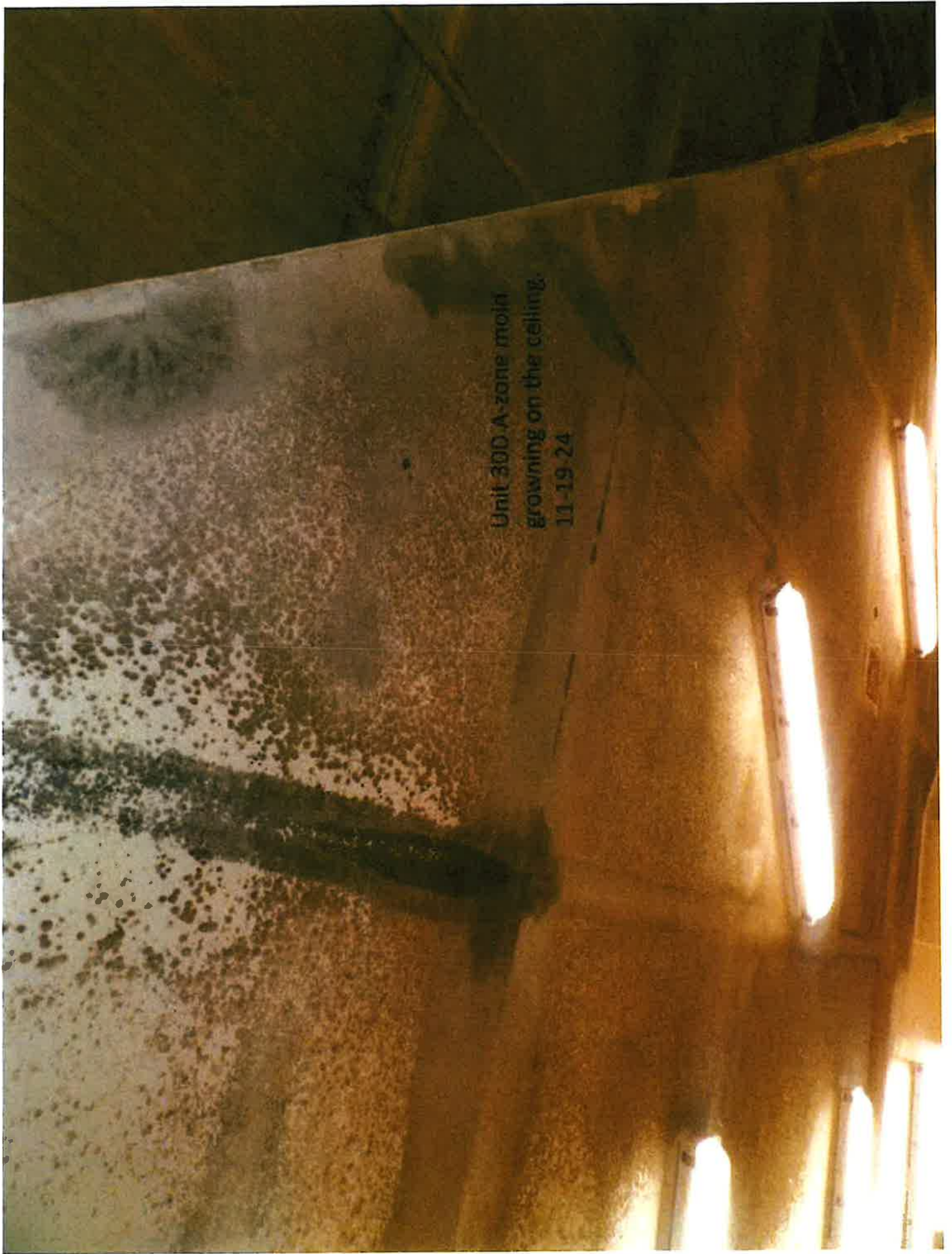
UNIT 308 B-zone behind beds 149 and 150 outlet burned out. 11-19-24



Unit 30C A-zone handicap shower contantly runs. 11-19-24



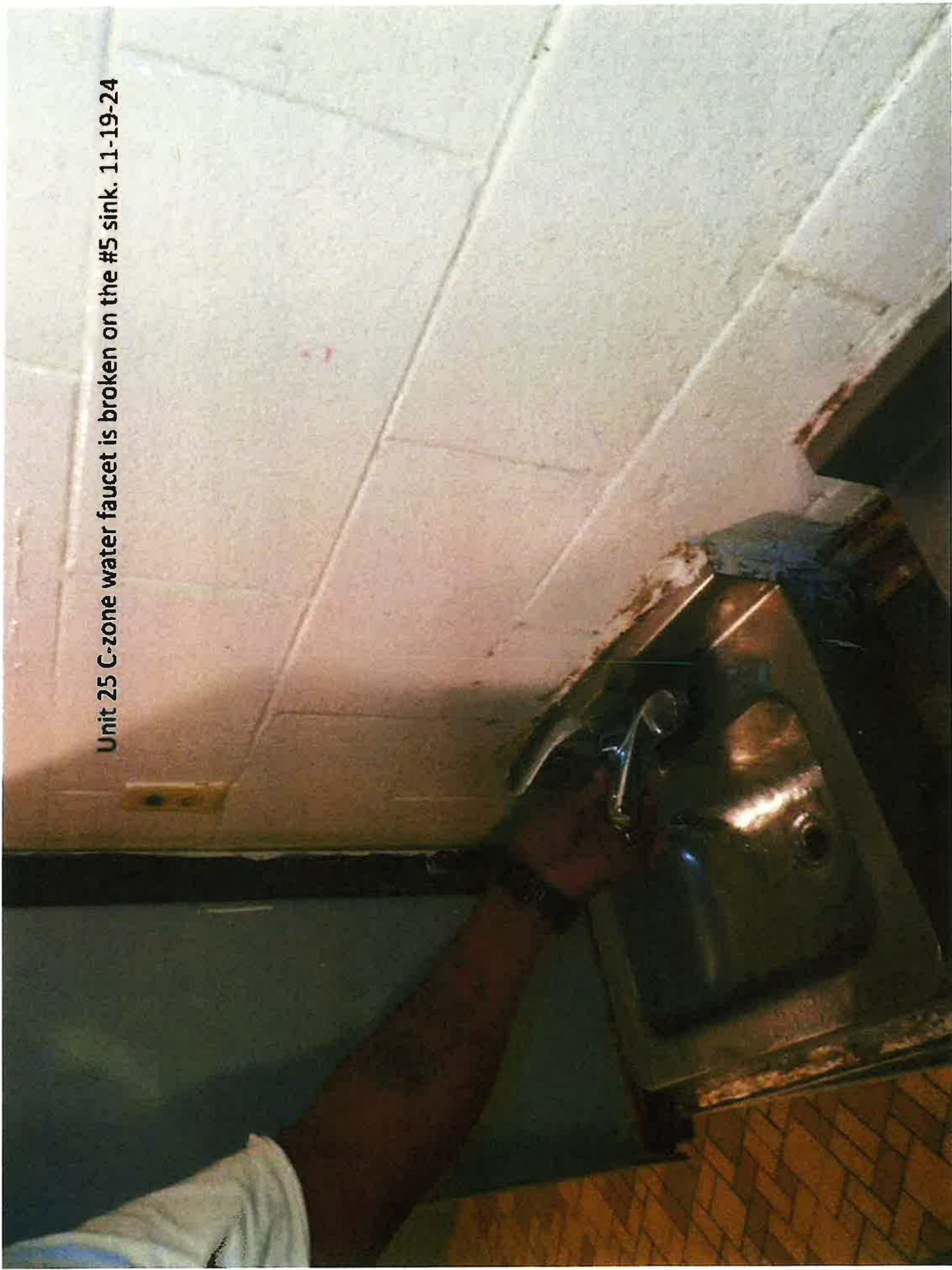
Unit 300 A-zone mold
growing on the ceiling.
11-19-24

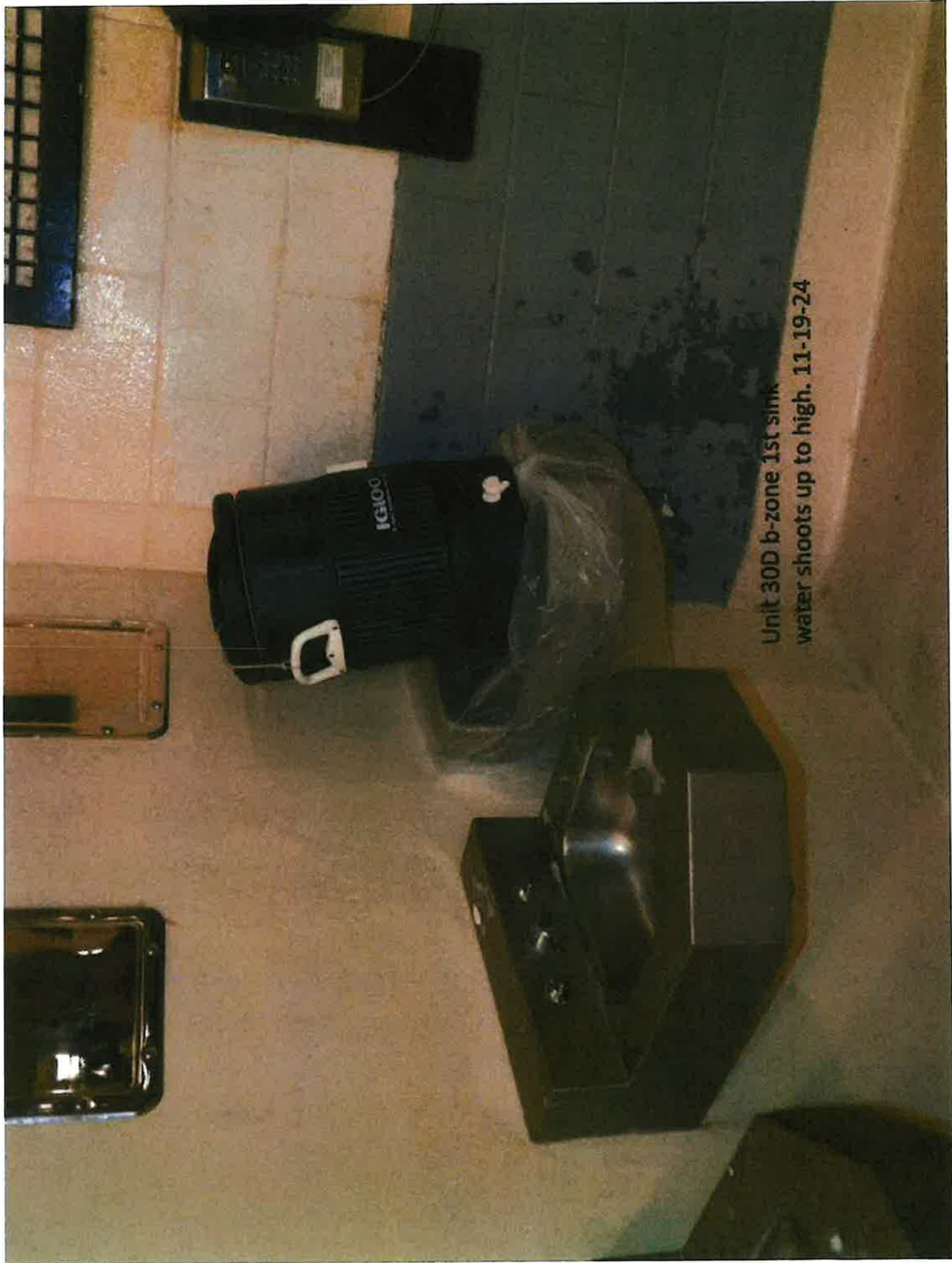




Unit 25 B-zone 2nd sink inoperable. 2nd sink runs constantly. 11-19-24

Unit 25 C-zone water faucet is broken on the #5 sink. 11-19-24



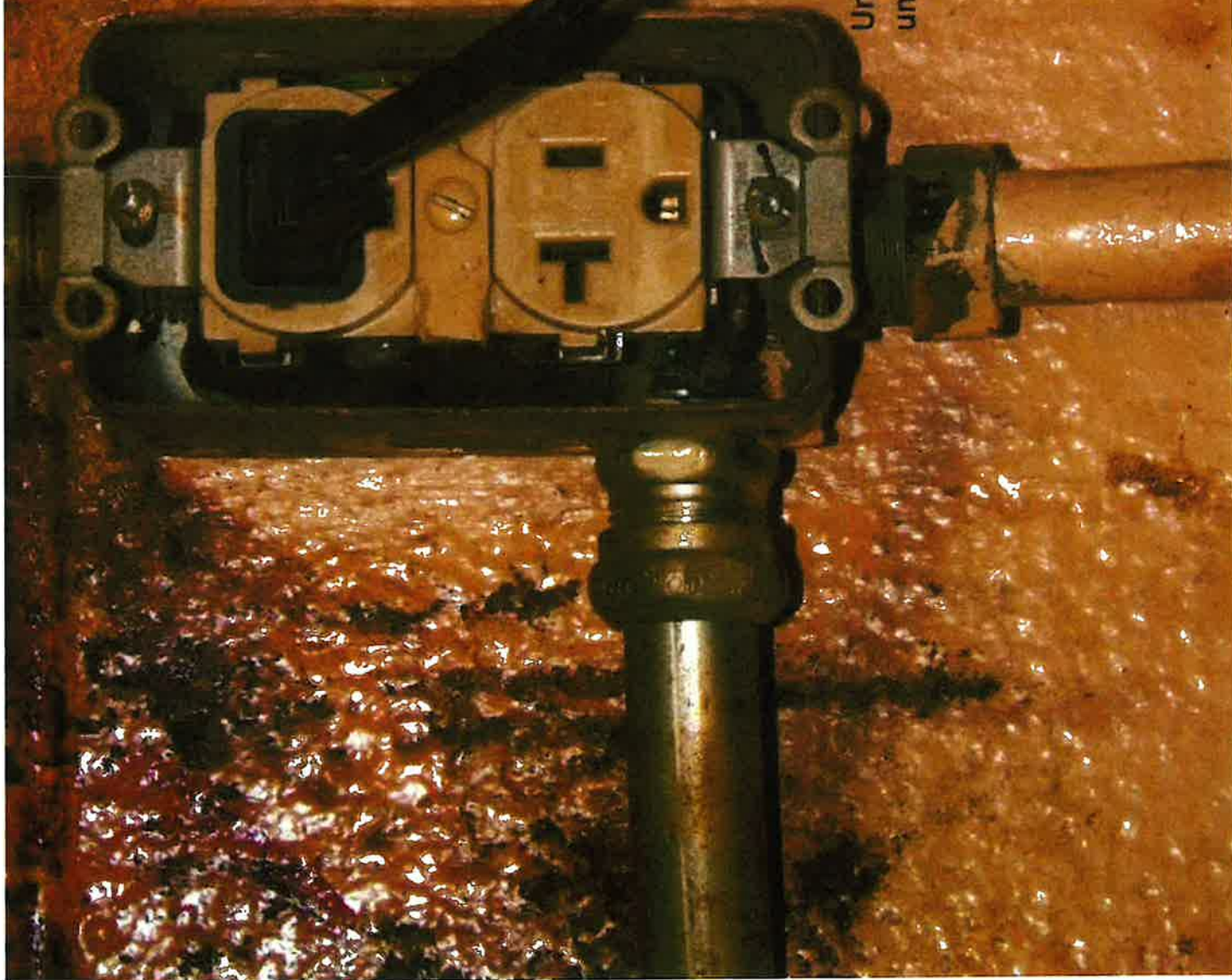


Unit 30D b-zone 1st sink
water shoots up to high. 11-19-24

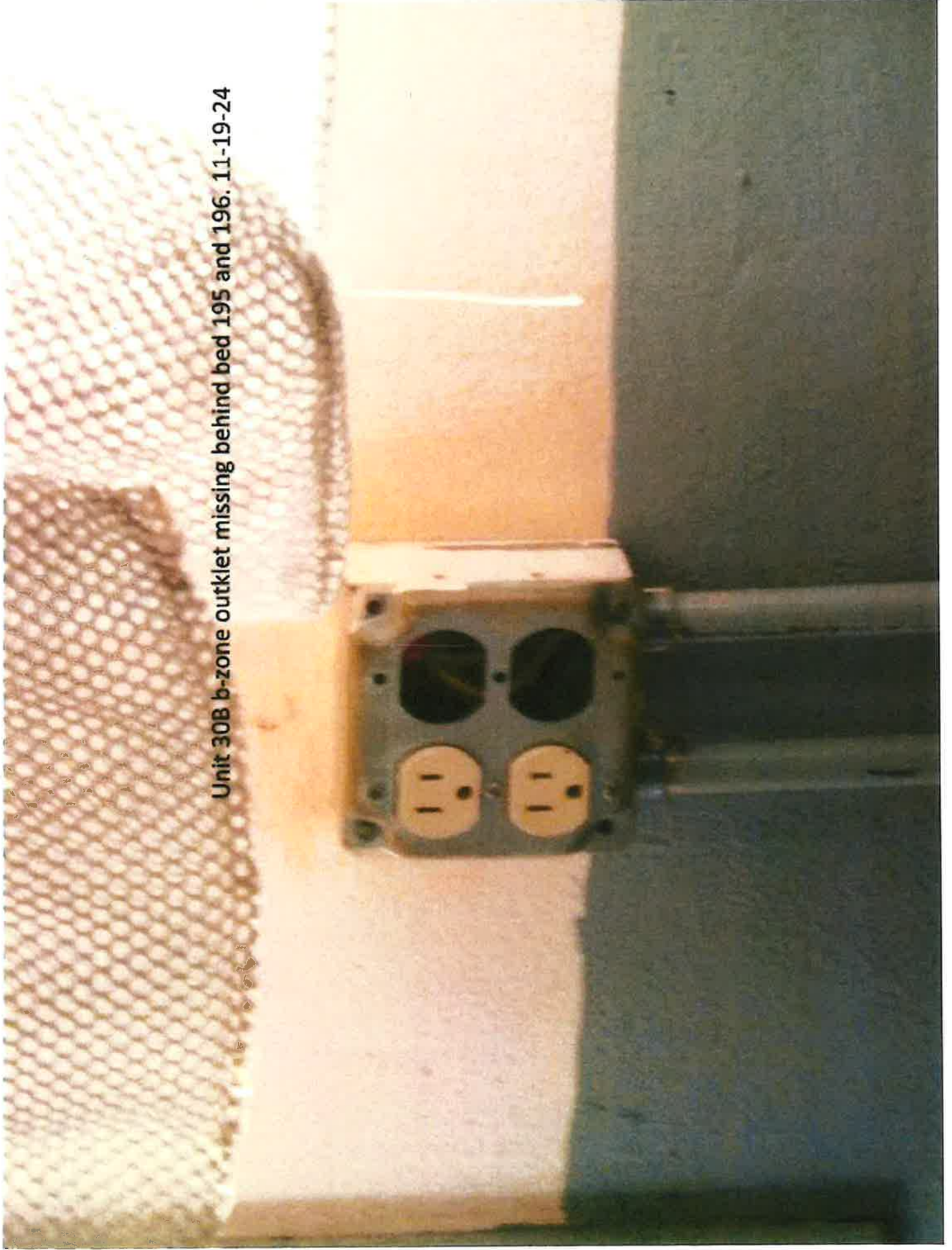
Unit 30C B-zone 2nd sink stopped up. 11-19-24

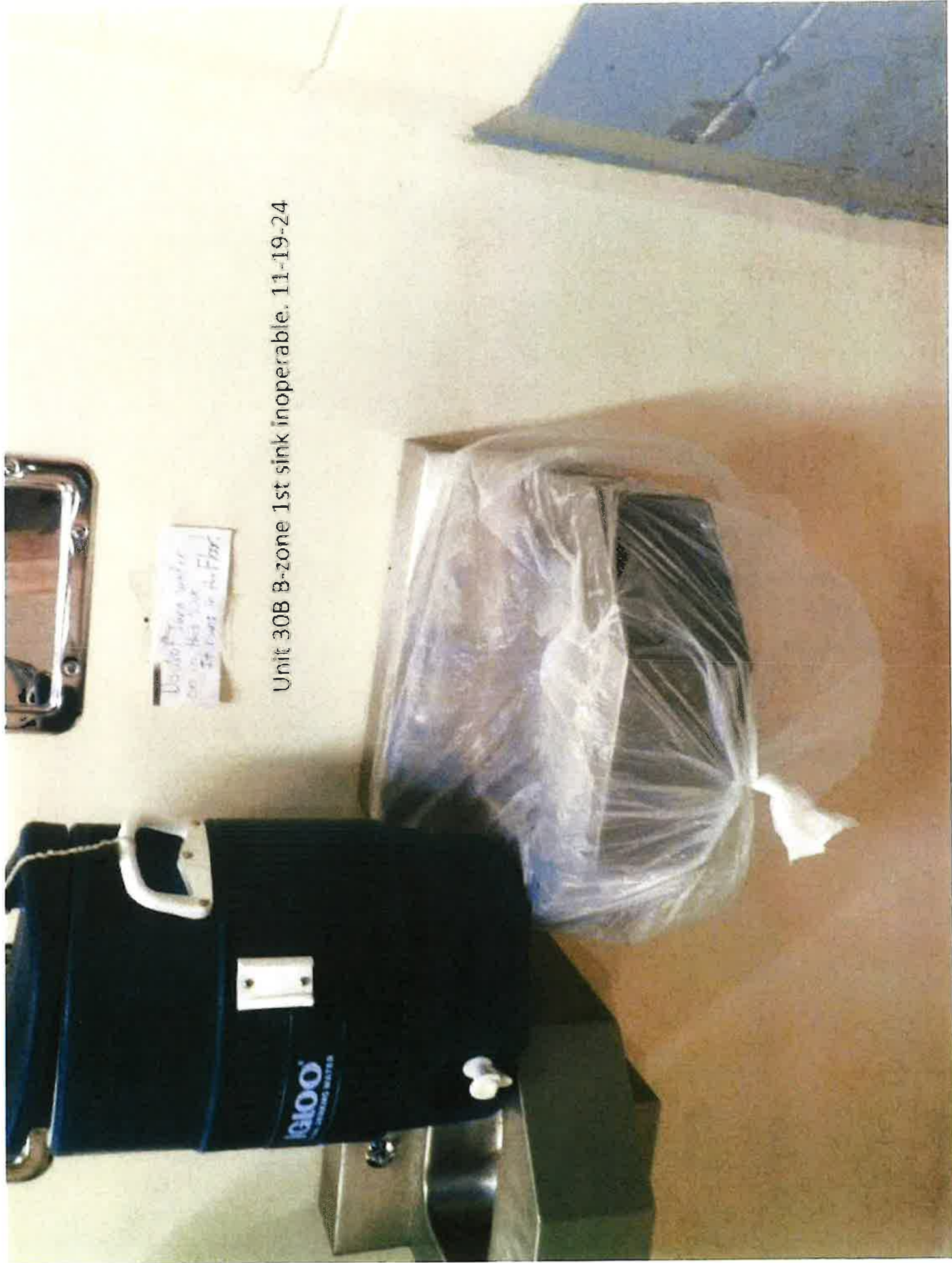


Unit 30B B-zone outlet cover need replacing
under tv. 11-19-24



Unit 30B b-zone outlet missing behind bed 195 and 196. 11-19-24



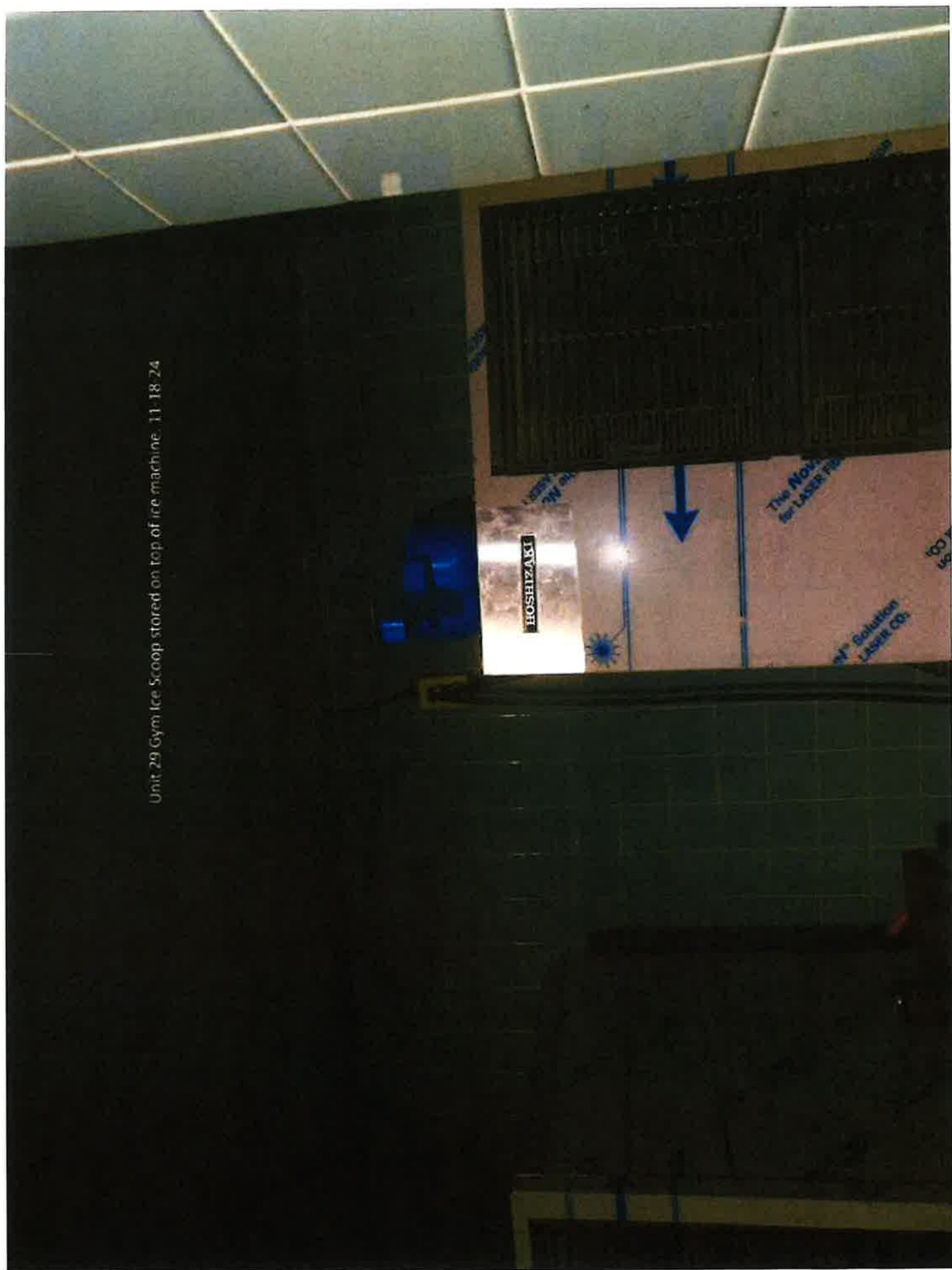


Unit 30B B-zone 1st sink inoperable. 11-19-24



Unit 30A A-zone handicap sink
inoperable. 11-19-24

Unit 29 Gym Ice Scoop stored on top of ice machine. 11-18-24



Unit 29F B-zone sink inoperable
11-19-24





Unit 29J a-zone exit light out. 11-18-24

Unit 29 Gym Milk stored in ice cooler 11-19-24



Unit 29 Gym wrong solution bring used in Barber Shop. 11-18-24



Unit 30D b-zone mold growing on the ceiling. 11-19-24



Unit 42 bird nest in holding cell window, 11-19-24



Unit 42 East Ward inmate bathroom door
need a knob. 11-19-24



Unit 29F B-7002 sink in rooming

11-19-24

