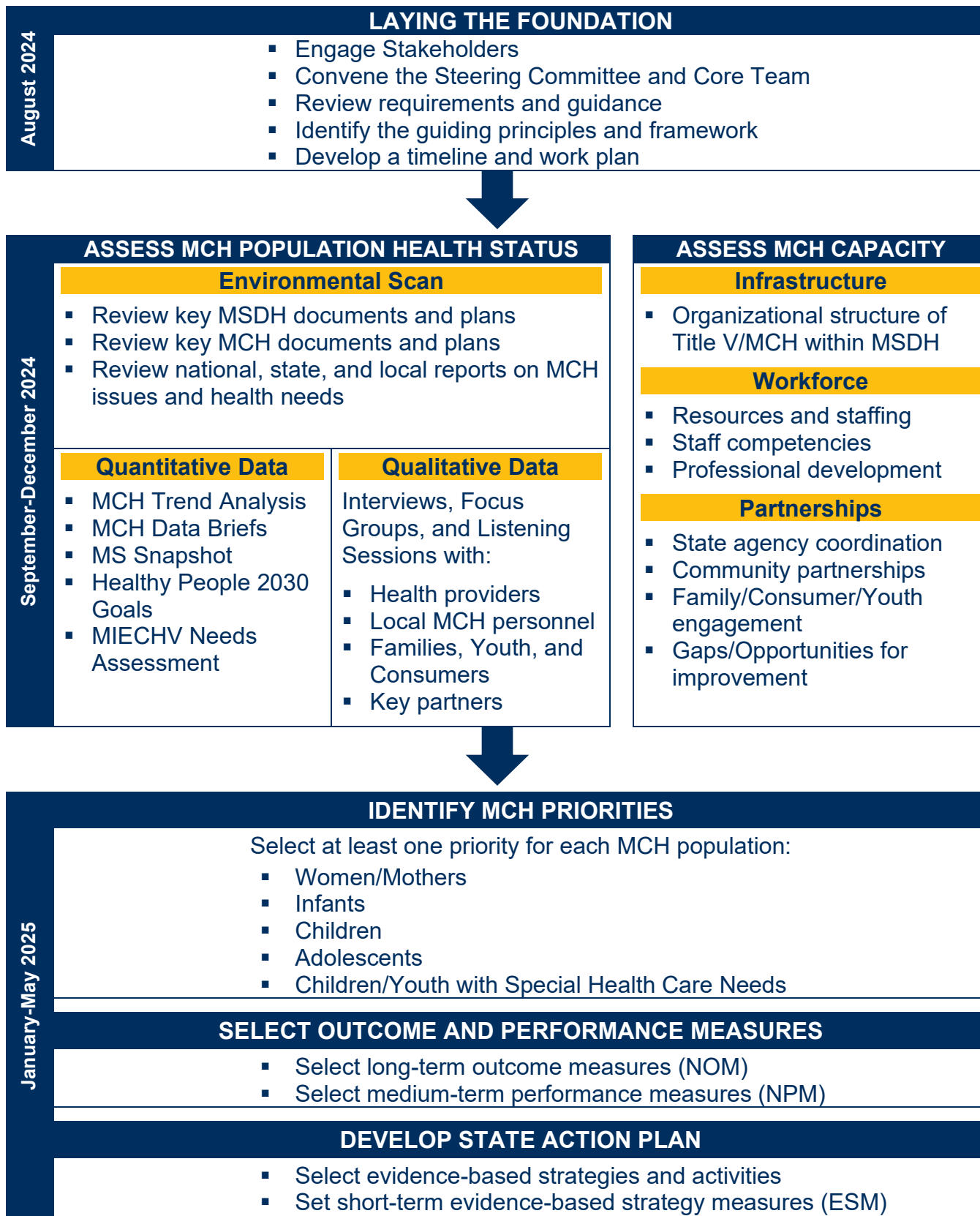


# MATERNAL & CHILD HEALTH (MCH) NEEDS ASSESSMENT 2025-2030



MISSISSIPPI STATE DEPARTMENT OF HEALTH



# MATERNAL & CHILD HEALTH (MCH) NEEDS ASSESSMENT 2025-2030



MISSISSIPPI STATE DEPARTMENT OF HEALTH

## What is the purpose of the Maternal & Child Health Needs Assessment?

Every five years, Mississippi's Title V Maternal and Child Health (MCH) Program conducts a statewide needs assessment of the health and wellbeing of MCH populations, such as women, mothers, infants, children and youth with and without special health care needs, and families. The MCH Needs Assessment process will help identify current health issues for MCH populations in the state and the capacity of the Title V/MCH Program to address their needs. The MCH Needs Assessment will help the Title V/MCH Program select seven to ten priorities. The Title V/MCH Program will then develop an action plan to address these priorities over the next five years.

## What are the components of our Maternal & Child Health Needs Assessment?

The MCH Needs Assessment will involve a multi-step process. The Needs Assessment will begin with a review of national, state, and local reports and plans on issues impacting MCH populations. The Needs Assessment will collect and analyze quantitative and qualitative data, including vital statistics, key indicators of population health, focus groups, listening sessions, interviews, and surveys. These data will be summarized into Data Briefs. These briefs will highlight health issues in Mississippi and contributing factors, including social determinants of health. The Needs Assessment will also assess the public health infrastructure, workforce, and partnerships to determine the Title V/MCH Program's capacity to address the identified needs of MCH populations. The Title V/MCH Program will use this information and stakeholder input—including perspectives of families and youth—to identify priorities for the next five years.

## How does the Maternal & Child Health Needs Assessment affect me?

The MCH Needs Assessment will determine the focus for the new MCH State Action Plan. The Title V/MCH Program will set goals, measures, and evidence-based strategies and activities to address the selected priorities over the next five years. This plan will guide MCH professionals to align resources, enhance the public health system, and design health programs to improve the health and wellbeing of MCH populations across Mississippi.

## How can I participate in the MCH Needs Assessment?

The MCH Needs Assessment will engage families, communities, and professionals through focus groups, listening sessions, interviews, and surveys. You can share your thoughts and experiences with the Title V/MCH Team to help identify barriers and opportunities to improve the health and wellbeing of MCH populations. You may also provide comments on the priorities, strategies, activities, and measures in the 2026-2030 MCH State Action Plan.

## For more information:

Get updates on the MCH Needs Assessment at <https://msdh.ms.gov/MCHBG>. If you have questions or comments, please email [MCHBG@msdh.ms.gov](mailto:MCHBG@msdh.ms.gov).