

VACCINE  
COVERAGE ↑ **14.3%**

TB ↓ **11**  
cases percent

tuberculosis  
rates down  
**12.9%**

MISSISSIPPI STATE  
DEPARTMENT OF HEALTH

**7.7**  
percent

ANNUAL  
REPORT  
2013

**HIV**  
reported cases  
**DOWN**  
**5%**

*teen pregnancy* ↓ **10.3**  
percent

## TABLE OF CONTENTS

<b>Administrative</b> .....	<b>2-11</b>
Mississippi State Board of Health Members .....	4
MSDH Organizational Chart .....	5
Public Health Districts .....	6
MSDH Administrative Staff .....	7
Changes in Regulations .....	8
Changes in State Law .....	11
<b>Public Health Indicators</b> .....	<b>12-21</b>
Vital Statistics .....	14
Infant Mortality .....	16
AIDS .....	16
Tuberculosis .....	17
West Nile Virus .....	18
Immunizations .....	19
Website Activity .....	20
<b>Program Activities and Statistics</b> .....	<b>22-27</b>
<b>Fiscal Year 2013: Expenditures, Travel and Vehicle Reports</b> .....	<b>28-44</b>
Expenditures .....	31-34
Travel Reports .....	35-44
Vehicle Reports .....	44



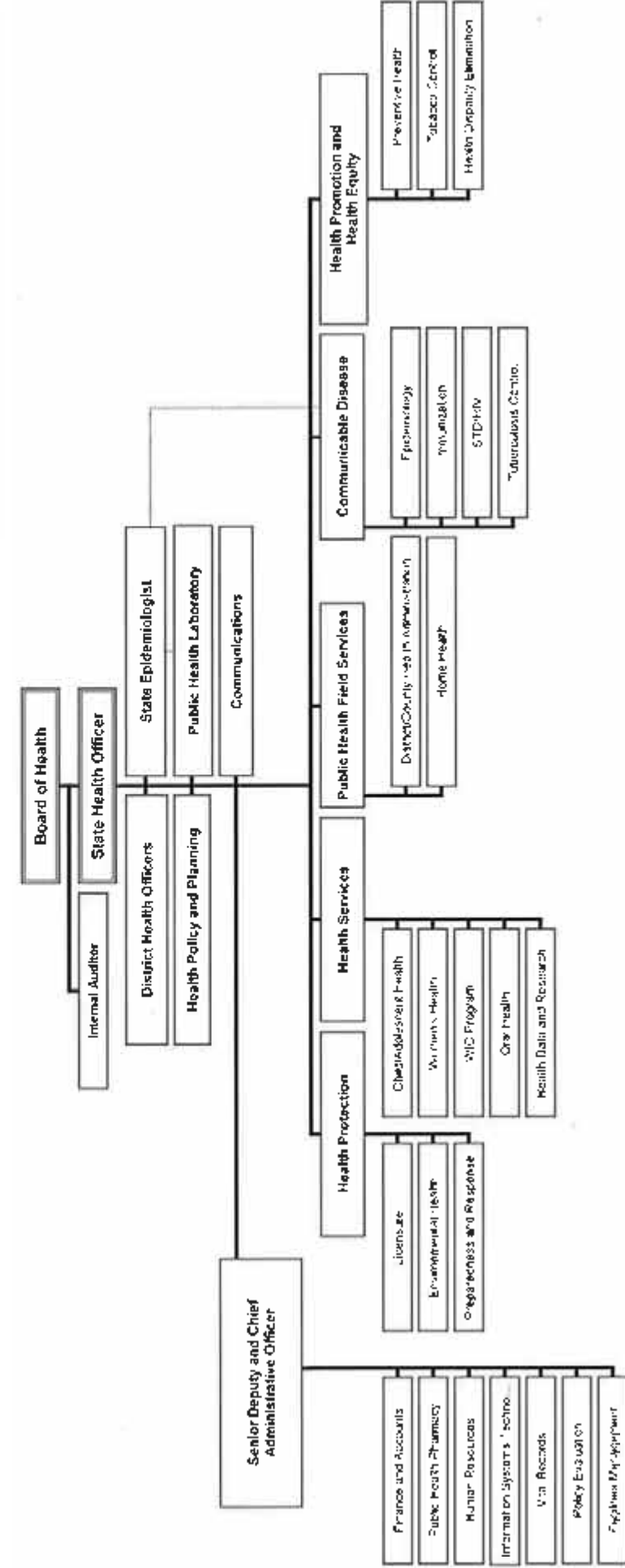
# MISSISSIPPI STATE BOARD OF HEALTH

NAME	TERM EXPIRES
Elizabeth "Beth" Ashley Harkins Aldridge Madison, MS	June 30, 2019
Elayne H. Anthony, PhD Madison, MS	June 30, 2019
Ed D. "Tad" Barham, MD, FACR Clinton, MS	June 30, 2017
J. Edward "Ed" Hill, MD Tupelo, MS	June 30, 2015
Lucius "Luke" M. Lampton, MD Magnolia, MS	June 30, 2019
Carl L. Nicholson, Jr., CPA Hattiesburg, MS	June 30, 2017
Sammie Ruth Rea, RN Brandon, MS	June 30, 2015
Ronald "Ronnie" W. Robertson, Sr. Greenwood, MS	June 30, 2017
Kelly S. Segars, Sr., MD Iuka, MS	June 30, 2015
Thad Fulton Waites, MD Hattiesburg, MS	June 30, 2015

## MISSISSIPPI STATE DEPARTMENT OF HEALTH FUNCTIONAL ORGANIZATIONAL CHART

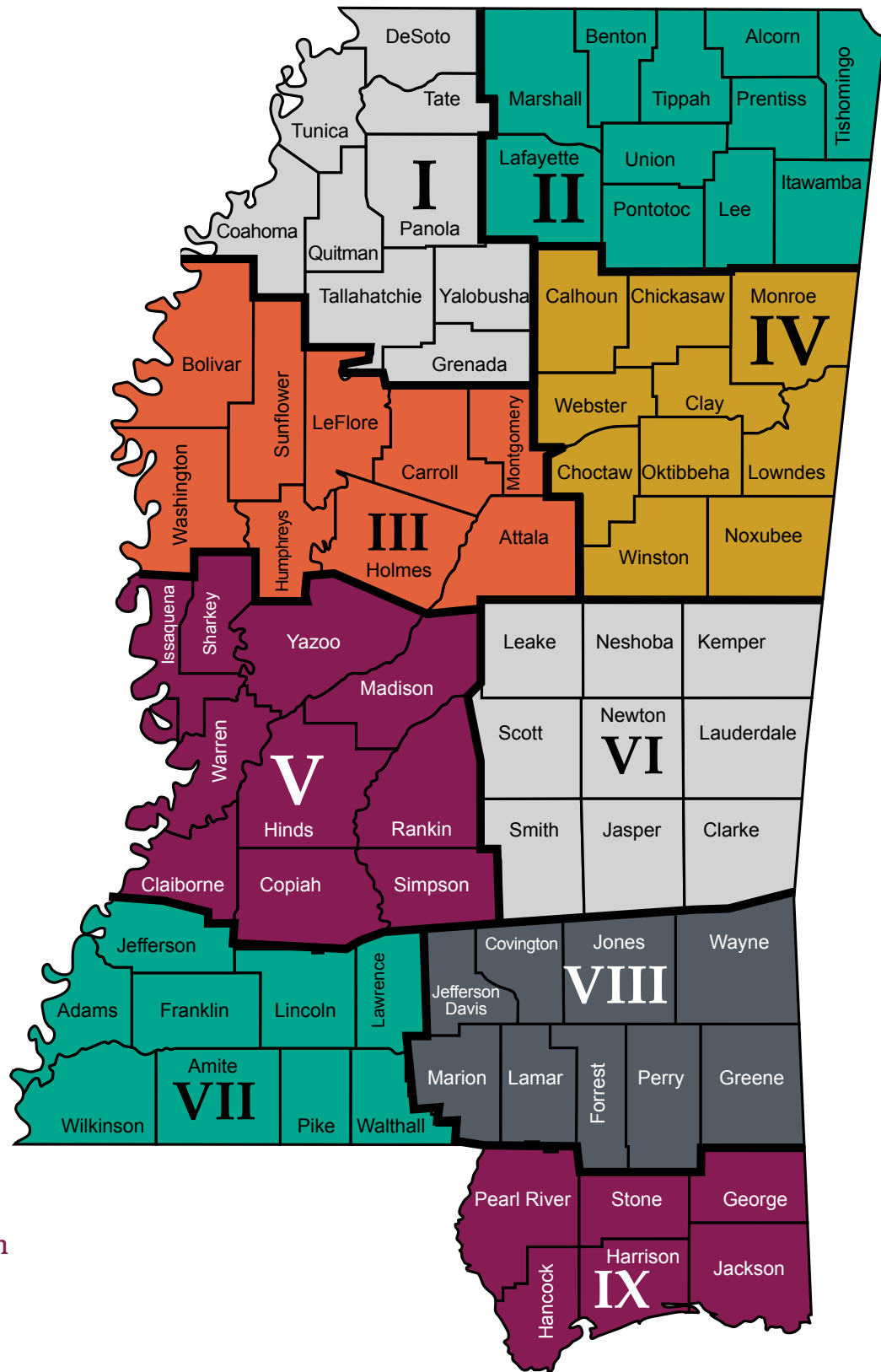
Agency: 0301  
FY 2014  
Prepared: July 1, 2013

*Mary Queen*  
State Health Officer



# PUBLIC HEALTH DISTRICTS

# MSDH ADMINISTRATION



**Northwest Public Health District I**  
662-563-5603

**Northeast Public Health District II**  
662-841-9015

**Delta/Hills Public Health District III**  
662-453-4563

**Tombigbee Public Health District IV**  
662-323-7313

**West Central Public Health District V**  
601-978-7864

**East Central Public Health District VI**  
601-482-3171

**Southwest Public Health District VII**  
601-684-9411

**Southeast Public Health District VIII**  
601-271-6099

**Coastal Plains Public Health District IX**  
228-436-6770

**State Health Officer**  
**State Epidemiologist**  
Deputy State Epidemiologist

**Communicable Disease**  
Immunization  
Tuberculosis  
STD/HIV

**Communications**  
**Health Policy and Planning**

**Legal Counsel**  
**Internal Audit**

**Health Promotion & Health Equity**  
Health Disparity Elimination  
Preventive Health  
Office of Tobacco Control

**District Health Officers & Deputies**  
District I & III  
District II  
  
District IV  
District V  
District VI  
District VII  
District VIII  
  
District IX

**Field Services**  
**District Health Administrators**  
District I  
District II  
District III  
District IV  
District V  
District VI  
District VII  
District VIII  
District IX

**Senior Deputy & Chief Administrative Officer**  
**Health Administration**  
Finance & Accounts  
Facilities & Property Management  
Human Resources  
Information Technology  
Public Health Pharmacy  
Policy Evaluation  
Vital Records

**Public Health Laboratory Director**  
**Health Protection**  
Emergency Planning & Response  
Emergency Medical Services/Trauma Services  
Environmental Services  
Licensure

**Health Services**  
Child & Adolescent Health  
Health Data & Research  
State Dental Director  
WIC  
Women's Health

Mary Currier, M.D., M.P.H. 601-576-7634  
Thomas E. Dobbs III, M.D., M.P.H. 601-576-7725  
Paul Byers, M.D. 601-576-7725

Joy Sennett, M.H.S., Director 601-576-7725  
Tammy Clark, R.N. 601-576-7751  
Mike Holcombe, M.P.P.A. 601-576-7700  
Nicholas Mosca, D.D.S. 601-576-7723

Liz Sharlot 601-576-7667  
Don Eicher, J.D. 601-576-7874

Bob Fagan, J.D. 601-576-7847  
Sharon Nasianceno, MAccy., CPA 601-576-7458

Evelyn Walker, M.D., M.P.H., Director 601-576-7266  
Tanya Funchess, D.H.A., M.P.H., M.S.M. 601-576-7266  
Victor Sutton, Ph.D, M.P.P.A. 601-576-7781  
Roy Hart, M.P.H. 601-991-6050

Alfio Rausa, M.D. 662-453-4563  
J. Roma Taylor, M.D. 662-841-9015  
Crystal L. Tate, M.D. (Deputy) 662-841-9015  
Robert H. Curry, M.D. 662-323-7313  
Rebecca James, M.D. 601-978-7864  
Rebecca James, M.D. (Acting) 601-482-3171  
Leslie England, M.D. 601-684-9411  
Thomas E. Dobbs III, M.D., M.P.H. (Acting) 601-271-0699  
Quenyatta Echols-Williams, M.D. (Deputy) 601-271-0699  
Paul Byers, M.D. (Acting) 228-436-6770

Tim Darnell, M.S. 601-576-7951

Diane W. Hargrove, M.R.P. 662-563-5603  
Roger Riley, M.S. 662-841-9015  
Diane W. Hargrove, M.R.P. 662-453-4563  
Karen McPherson 662-323-7313  
Kevin Pearson, M.P.P.A. 601-978-7864  
Kathy Posey, R.N. 601-482-3171  
Tracy Byas, M.H.S. 601-684-9411  
Chad Bridges 601-271-0699  
David Caulfield 228-436-6770

Mike Lucius 601-576-7635

Willie Thompson 601-576-7542  
Vacant 601-576-7635  
Ronald P. Davis, M.B.A. 601-576-7642  
Marc Wilson 601-576-8092  
Meg Pearson, Pharm.D. 601-713-3457  
Kathy Moon, M.P.P.A. 601-576-7428  
Judy Moulder, M.H.S. 601-576-7961

Daphne Ware, Ph.D., M.S. 601-576-7582

Jim Craig, C.P.M., Director 601-576-7680  
Wayne Vaughn 601-576-7680  
Alisa Williams 601-576-7380  
Leslie Royals, M.S., P.E., B.C.E.E. 601-576-7690  
Vickey Berryman, R.N. 601-364-1100

Kathy Burk, L.C.S.W., C.P.M., Director 601-576-7472  
Beryl Polk, Ph.D, C.P.M. 601-576-7464  
Lei Zhang, Ph.D, M.B.A., M.S. 601-576-8165  
Dionne Richardson, D.D.S., M.P.H. 601-576-7500  
Elvie Guthrie-Lewis, M.A., R.D. 601-991-6000  
Louisa Denson, M.P.P.A., L.C.S.W. 601-576-7856



## CHANGES IN REGULATIONS

The following regulatory actions were taken by the Mississippi State Board of Health in FY 2013:

### JULY 11, 2012

#### ***Changes made to the Minimum Standards for Institutions for the Aged or Infirm; to the Minimum Standards for Personal Care Homes, Assisted Living; and to the Minimum Standards for Personal Care Homes, Residential Living.***

- The Board defined Interferon-Gamma-Release Assay (IGRA) as an approved test for tuberculin testing and clarified previous language to include guidelines for both Mantoux test (TST) and IGRA methods of tuberculin testing.

#### ***Changes made to the Minimum Standards of Operation for Psychiatric Residential Treatment Facilities.***

- The Board voted to allow inclusion of the Psychiatric Mental Health Nurse Practitioner as part of the professional staff at such facilities.

#### ***Changes made to the Minimum Standards of Operation for Abortion Facilities and to the Minimum Standards of Operation for Ambulatory Surgical Facilities.***

- The Board amended both sets of these regulations to comply with House Bill 1390 (2012 Reg. Session), which required all physicians performing abortions in abortion facilities to have admitting privileges at a local hospital and to be board-certified in obstetrics and gynecology.

#### ***Changes made to the EMS Rules and Regulations.***

- An allowance for an 8-year EMS Driver certification was adopted.

#### ***Changes made to the Trauma Care System Regulations.***

- The amendment directed licensees to the new Essential and Desirable (E&D) Equipment List on the agency's website.
- The Board also voted to require Trauma Centers to have sufficient registry staff to ensure all registry submissions are accurate and on time.

#### ***Changes made to the Mississippi Primary Drinking Water Regulations.***

- Necessary updates were made to be consistent with Federal EPA requirements.

#### ***Changes made to the On-Site Wastewater Disposal System Regulations.***

- Necessary updates were made to comply with the statutory Wastewater Disposal System Law.

#### ***Changes made to the Regulations Governing the Issuance of Certificates of Public Advantage to Rural Hospitals that have Entered into Cooperative Agreement to Engage in Various Common Activities (COPA).***

- The Board adopted to increase the daily hearing fee from \$2,000.00 per day to \$3,000.00 per day and to increase hearing deposit requirement from \$2,000.00 to \$3,000.00.

#### ***Changes made to the Rules and Regulations Governing Reportable Diseases.***

- The Board added HIV viral load results and HIV related CD4+ (T4) lymphocyte results of any value to the list of Class 1 reportable diseases.
- The Board deleted the requirement for syphilis testing prior to application for a marriage license, in compliance with Senate Bill 2851 (2012 Reg. Session).

### OCTOBER 31, 2012

#### ***Changes made to the Regulations Governing the Licensure of Professional Art Therapists; to the Regulations Governing the Registration of Medical Radiation Technologists; and to the Regulations Governing the Licensure of Respiratory Care Practitioners.***

- The Board made modifications to these regulations to comply with statutory changes made by the legislature to the respective licensing laws.

#### ***Changes made to the Minimum Standards for Adult Foster Care Facilities.***

- The Board added an option for these facilities to use the IGRA (Interferon-Gamma-Release Assay) test for diagnosing M. Tuberculosis.

#### ***Adoption of the new Minimum Standards of Operation of Prescribed Pediatric Extended Care (PPEC) Centers.***

- The legislature established this new type of healthcare entity and charged the Department with adopting regulations for licensure and regulation of same.

#### ***Changes made to the EMS Rules and Regulations.***

- Amendments were adopted to allow for the Medical Control Plan to define priority for medical guidance during interfacility transfers; to remove the requirement for prehospital personnel to carry agency-issued identification while on duty; and to expand EMT scope of practice to include pulse oximetry.

#### ***Changes made to the Trauma Care System Regulations.***

- Amendments clarified that all levels of trauma centers must notify transferring hospital of the condition of the patient upon receipt at the referral hospital; in addition, updates were made to Consolidated Trauma Activation Criteria and Destination Guidelines with CDC changes and pediatric specific guidance.

#### ***Changes made to the Minimum Standards for the Operation of Ambulatory Surgery Facilities.***

- Changes were made to allow Certified Registered Nurse Anesthetists to work in collaboration with certain physicians on the premises and not to require physician supervision, consistent with state law.

#### ***Changes made to the Minimum Standards of Operation for Home Health Agencies.***

- Amendments require the supervising physical therapist to have a case conference with the physical therapist assistant to review the Plan of Care and to provide instructions for treatment before beginning to provide services to the patient, as per request from the Mississippi State Board of Physical Therapy.

#### ***Changes made to the Minimum Standards of Operation for Hospice; to the Minimum Standards of Operation for the Aged or Infirm; to the Minimum Standards of Operation for Personal Care Homes Assisted Living; to the Minimum Standards of Operation for Personal Care Homes Residential Living; and to the Minimum Standards of Operation for Alzheimer's Disease/Dementia Care Unit.***

- These regulations were amended to include "physician assistant" in each case where a nurse practitioner is mentioned.

#### ***Changes made to the Minimum Standards of Operation for Mississippi Hospitals.***

- These regulations were amended to include "physician assistant" in each case where a nurse practitioner is mentioned; a provision was inserted allowing for an off-campus emergency department pilot project; a rule was added requiring verbal orders be authenticated according to facility policy and, in the absence of facility policy, within 30 days after discharge.

#### ***Adoption of FY 2013 Mississippi State Health Plan.***

### JANUARY 9, 2013

#### ***Changes made to the Minimum Standards of Operation for Abortion Facilities.***

- The definition of "physician" was amended to be consistent with the statutory definition.

#### ***Changes made to the Minimum Standards for Institutions for the Aged or Infirm and to the Minimum Standards of Operation for Hospice.***

- These regulations were clarified to reflect that physician assistants are licensed by the Mississippi Board of Medical Licensure.

#### ***Changes made to the Minimum Standards of Operation for Birthing Centers.***

- These regulations were amended to replace the Mississippi Health Care Commission with the Mississippi State Department of Health as the licensing entity; also, the renewal fee was increased to \$300.00.

#### ***Changes made to the Minimum Standards for Utilization Review Agents.***

- These regulations were reformatted and renumbered to meet the requirements for filing with the Secretary of State under the Administrative Procedures Act.

#### ***Changes made to the Rules and Regulations Governing Reportable Diseases and Conditions.***

- HIV viral load results and HIV related CD4+ (T4) lymphocyte results of any value were changed from the list of Class 1 reportable disease and conditions to Class 3.
- The Board removed the "<15" age criteria for reporting of positive Tuberculin Skin Test or positive Interferon-Gamma-Release Assay, making the diagnosis of Myobacterium tuberculosis a Class 2 reportable condition regardless of age.
- The Board amended the value from >25 µg/dl to >10 µg/dl, making an elevated blood level >10 µg/dl in individuals >16 years of age a Class 2 reportable condition to better identify lead toxicity.

## CHANGES IN STATE LAW

APRIL 10, 2013

### ***Changes made to Regulations Governing Licensure of Child Care Facilities and to the Regulations Governing Licensure of Child Care Facilities for 12 or Fewer Children in the Operator's Home.***

- The Board made significant changes to the Nutritional Standards to improve nutrition and food safety in these facilities.

### ***Changes made to the EMS Rules and Regulations.***

- Amendments were made mandating EMS providers follow state system of care places and statewide triage and transport guidelines; to allow the option for EMS providers to submit certain patient reports electronically; addition of Consolidated Trauma Activation Criteria and Destination Guidelines.

### ***Changes made to the Trauma Care System Regulations.***

- Certain editorial corrections were made: the definition of State Trauma Plan was amended to include current regulations; references for Trauma Registry Inclusion Criteria were changed from the regulations to the website; Trauma Registrars were required to complete initial and recurring training; and neurosurgeons in Tertiary Pediatric Trauma Centers must meet the same response time as neurosurgeons in adult Trauma Centers.

### ***Changes made to the Appalachian Regional Commission "ARC" J-1 Visa Waiver Guidelines and to the Mississippi Conrad State 30 J-1 Visa Waiver Guidelines.***

- Major changes were made to this program to reduce application content and make the application process indicative of program criteria and evaluation.

### ***Adoption of the new Physician National Interest Waiver (NIW) Guidelines.***

- These regulations were removed from the Appalachian Regional Commission "ARC" J-1 Visa Waiver Guidelines and the Mississippi Conrad State 30 J-1 Visa Waiver Guidelines so that they could be adopted as a separate set of regulations.

Legislative Update for the 2013 Mississippi Legislative Session:

### **SENATE BILL 2202.** Signed 3/7/13. Effective 7/1/13.

- Revises § 41-60-11, Mississippi Code of 1972, to add the definition of "Emergency Medical Technician-Paramedic Critical Care." This additional level of care allows for the inter-facility transfer of patients to be created. Persons certified as EMT-Paramedic Critical Care could potentially provide inter-facility transfers that exceed the scope of the current EMT-Paramedic.

### **HOUSE BILL 719.** Signed 4/23/13. Effective 7/1/13.

- Revises § 41-67-1 - § 41-67-29 and § 41-67-33 - § 41-67-39, Mississippi Code of 1972, to make changes concerning the individual wastewater disposal law. Throughout the law, clerical changes were made to definitions, etc. Also, a two-acre exemption was included, which exempts homeowners with two acres or more from a soil/site evaluation unless required by a local ordinance.

### **HOUSE BILL 69.** Signed 3/21/13. Effective 7/1/13.

- Revises § 41-58-3 and § 41-58-5, Mississippi Code of 1972, to clarify changes of the makeup of the Medical Radiation Technologists Advisory Council. The law clarifies that fluoroscopic equipment includes Stationary and mobile C-arm machines and removes the "limited X-ray machine operator" from being a member of the MRT advisory council. In addition, the law requires a "limited X-ray machine operator" to report to the MS Board of Medical Licensure evidence of completing required training during the first 12 months of employment to apply ionizing radiation. Thereafter, a "limited X-ray machine operator" is required to provide the Board of Medical Licensure evidence of completing 12 hours of continuing education training every two years.

### **SENATE BILL 2193.** Signed 3/20/13. Effective 7/1/13.

- Adds the anabolic steroids methasterone and prostanazol to Schedule III of the Mississippi Uniform Controlled Substance Act. Also, revises Schedule V to include the depressant ezogabine.

### **HOUSE BILL 125.** Signed 4/1/13. Effective 7/1/13.

- Amends Section § 41-111-1, Mississippi Code of 1972, to add three new members of the Child Death Review Panel, including (1) the Mississippi Children's Justice Center, (2) Safe Kids Mississippi, and (3) Mississippi State Fire Marshal's Office. This law removed Compassionate Friends from the Panel.

### **SENATE BILL 2302.** Signed 4/16/13. Effective 7/1/13.

- Amends Section § 37-144-7, Mississippi Code of 1972, to remove the maximum limitation on the number of students who may be admitted to the Mississippi Rural Physicians Scholarship Program. The University of Mississippi Medical Center has been appropriated with \$1.76 million towards the program including \$100,000 through the rural dental scholarship program. The bill states that not fewer than 15 students will be admitted to the Mississippi Rural Physicians Scholarship Program each year, provided there are 15 or more qualified applicants for the program.

### **SENATE BILL 2553.** Signed 4/1/13. Effective upon passage.

- An act to exempt cottage food production operations from regulations from the Mississippi State Department of Health. The law uses the Department's definition that cottage food products are nonpotentially hazardous food products. A cottage food operation must comply with regulations, but is exempt from permitting requirements if it complies with the law and has annual gross sales of cottage food products that do not exceed \$20,000. All products must be clearly labeled with the (1) name and address of the cottage food operation, (2) name of the cottage food product, (3) ingredients in descending order by weight, and (4) allergen information. In addition, the Department may investigate any complaint.

### **HOUSE BILL 411.** Signed 4/25/13. Effective upon passage.

- Amends Section § 41-85-7, Mississippi Code of 1972, to prohibit the State Department of Health from processing any new applications for hospice licensure or issuing any new hospice licenses, except renewals, unless the application was pending March 1, 2013.







**STATUS OF SELECTED HEALTH INDICATORS  
FOR MISSISSIPPI, 2003-2012**

Year	Infant Mortality Rate <sup>1</sup>	Cardiovascular Disease Mortality Rate <sup>2</sup>	Teen Pregnancy Rate <sup>3</sup>
2003	10.7	300.6	36.3
2004	9.7	284.1	36.4
2005	11.4	293.9	35.5
2006	10.5	276.3	41.0
2007	10.1	274.8	43.0
2008	9.9	271.2	40.6
2009	10.0	253.6	39.0
2010	9.6	254.5	33.4
2011	9.4	245.9	30.1
2012	8.8	242.8	27.0
U.S. Rate (year)	6.2 (2010)	193.6 (2010)	Not Available
MS Rank <sup>4</sup>	50	49	

<sup>1</sup> Infant deaths per 1,000 live births

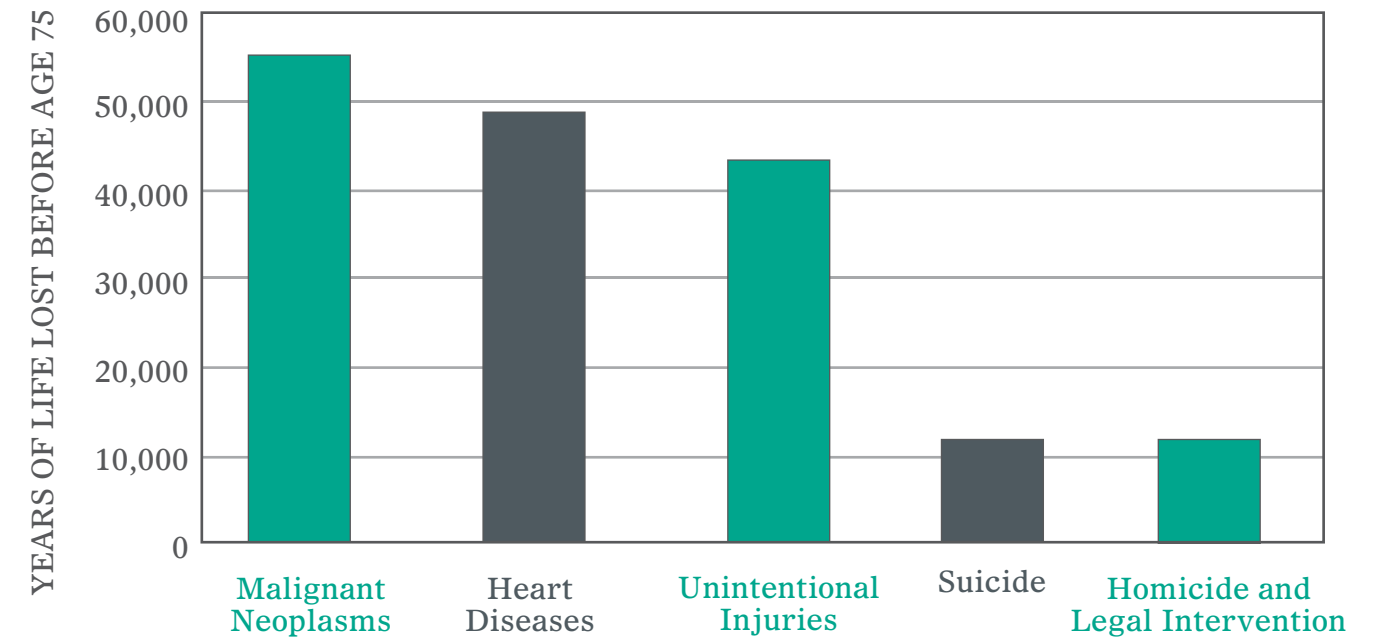
<sup>2</sup> Deaths per 100,000 population

<sup>3</sup> Births + fetal deaths + abortions per 1,000 females 10-19

<sup>4</sup> Rank: 1=best/50=worst

Source: Mississippi State Department of Health, Office of Public Health Statistics, Vital Statistics

**LEADING CAUSES OF YEARS OF POTENTIAL LIFE LOST  
BEFORE AGE 75, MISSISSIPPI RESIDENTS, 2012**



Source: Mississippi State Department of Health, Office of Public Health Statistics, Vital Statistics

**STATUS OF SELECTED PREVALENCE INDICATORS  
FOR MISSISSIPPI, 2003-2012**

Year	Obesity Prevalence Rate <sup>1</sup>	Diabetes Prevalence Rate <sup>1</sup>	Current Smoking Prevalence Rate <sup>1</sup>
2003	27.0	11.0	25.6
2004	29.5	9.6	24.6
2005	30.9	9.7	23.7
2006	31.5	10.9	25.1
2007	32.6	11.1	23.9
2008	33.4	11.3	22.7
2009	35.4	11.6	23.3
2010	34.5	12.4	22.9
2011	34.9	12.4	26.0
2012	34.6	12.5	24.0
U.S. Rate (year)	27.6 (2012)	9.7 (2012)	19.6 (2012)
MS Rank <sup>2</sup>	49	49	44

<sup>1</sup> Percent

<sup>2</sup> Rank: 1=best/50=worst

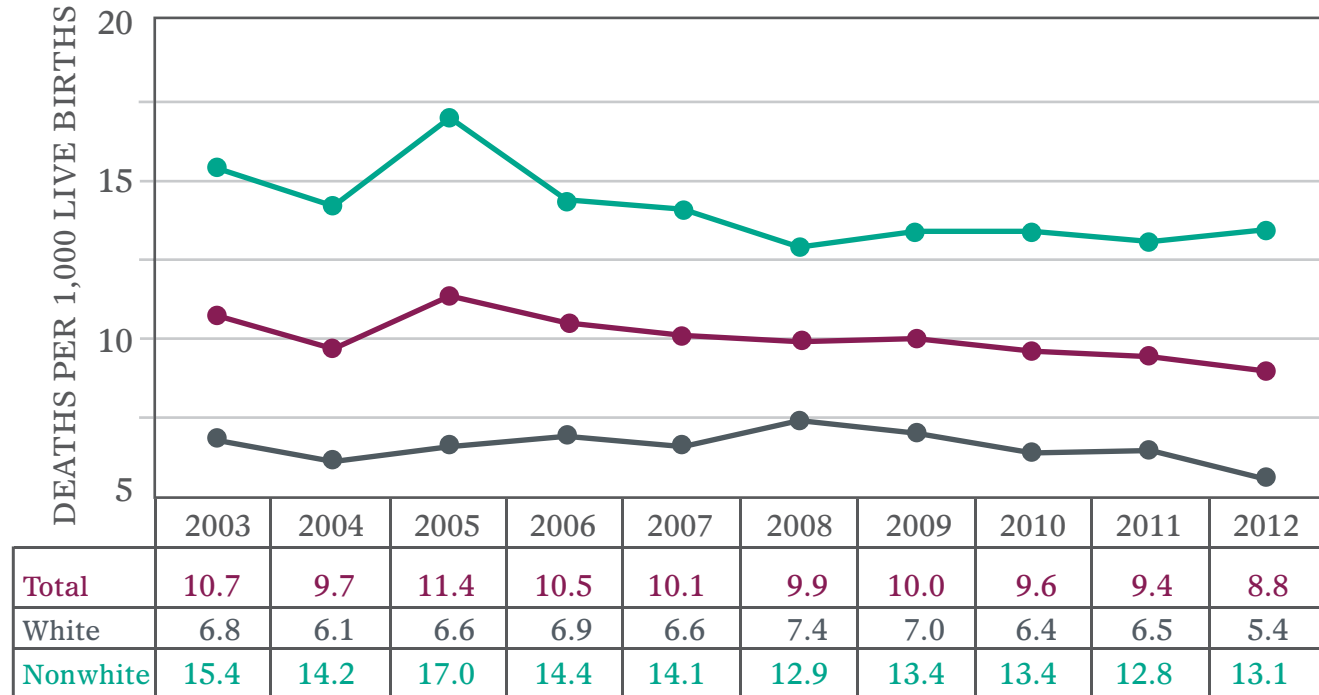
Source: Mississippi State Department of Health, Office of Public Health Statistics, Behavioral Risk Factor Surveillance System.

**LEADING CAUSES OF YEARS OF POTENTIAL LIFE LOST  
BEFORE AGE 75, MISSISSIPPI RESIDENTS, 2003-2012**

Year	Malignant Neoplasms	Heart Diseases	Unintentional Injuries	Suicide	Homicide and Legal Intervention
2003	52,980	52,386	48,940	9,971	11,946
2004	53,248	51,654	51,173	10,728	11,515
2005	53,876	54,376	55,156	11,550	9,514
2006	54,377	51,681	56,122	9,278	12,328
2007	52,427	52,930	55,342	11,721	11,400
2008	54,315	50,478	47,571	11,568	13,293
2009	52,071	48,098	47,324	10,724	10,358
2010	52,808	50,381	44,098	11,004	11,071
2011	55,702	48,878	44,945	10,835	12,356
2012	56,111	48,588	42,766	11,612	11,618

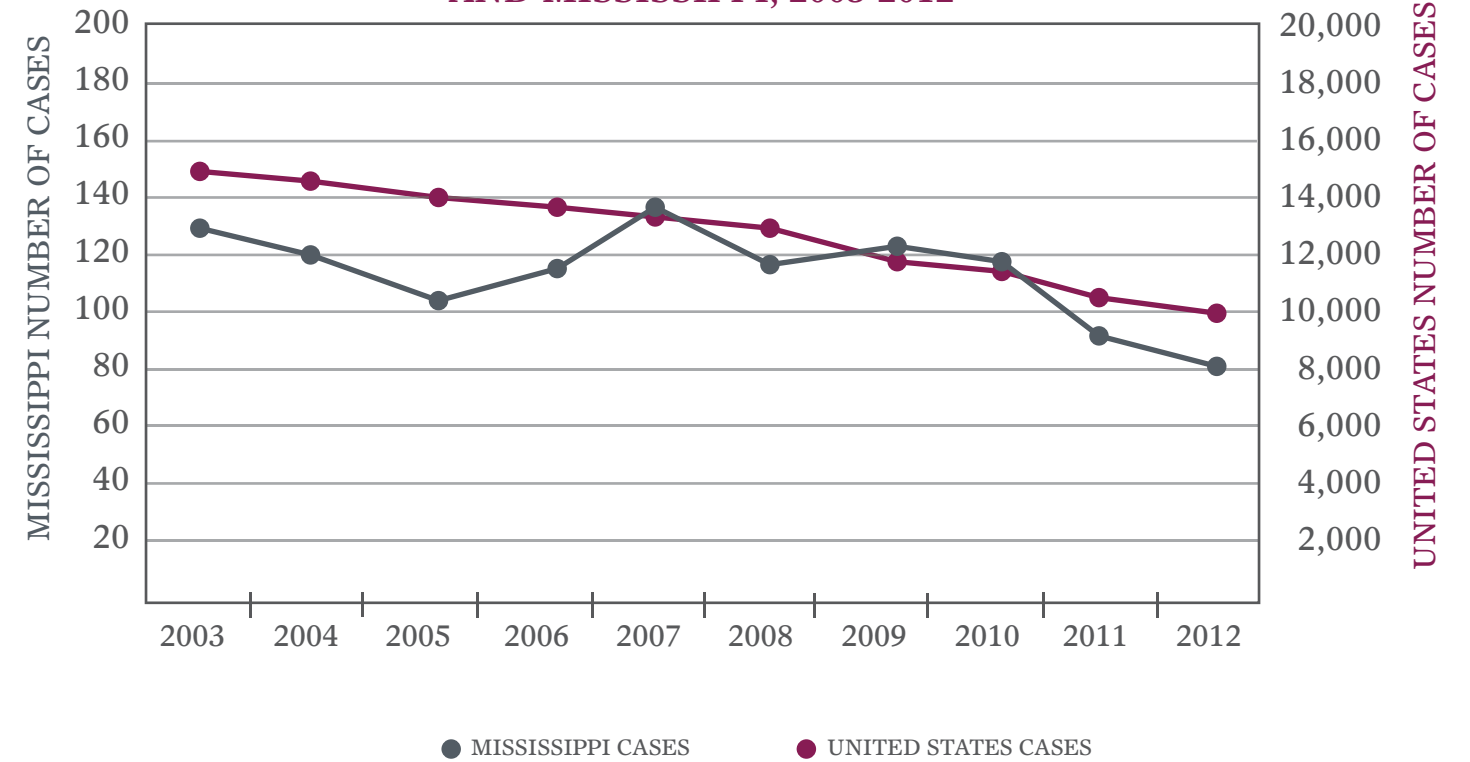
Source: Mississippi State Department of Health, Office of Public Health Statistics, Vital Statistics

### INFANT MORTALITY IN MISSISSIPPI, 2003-2012

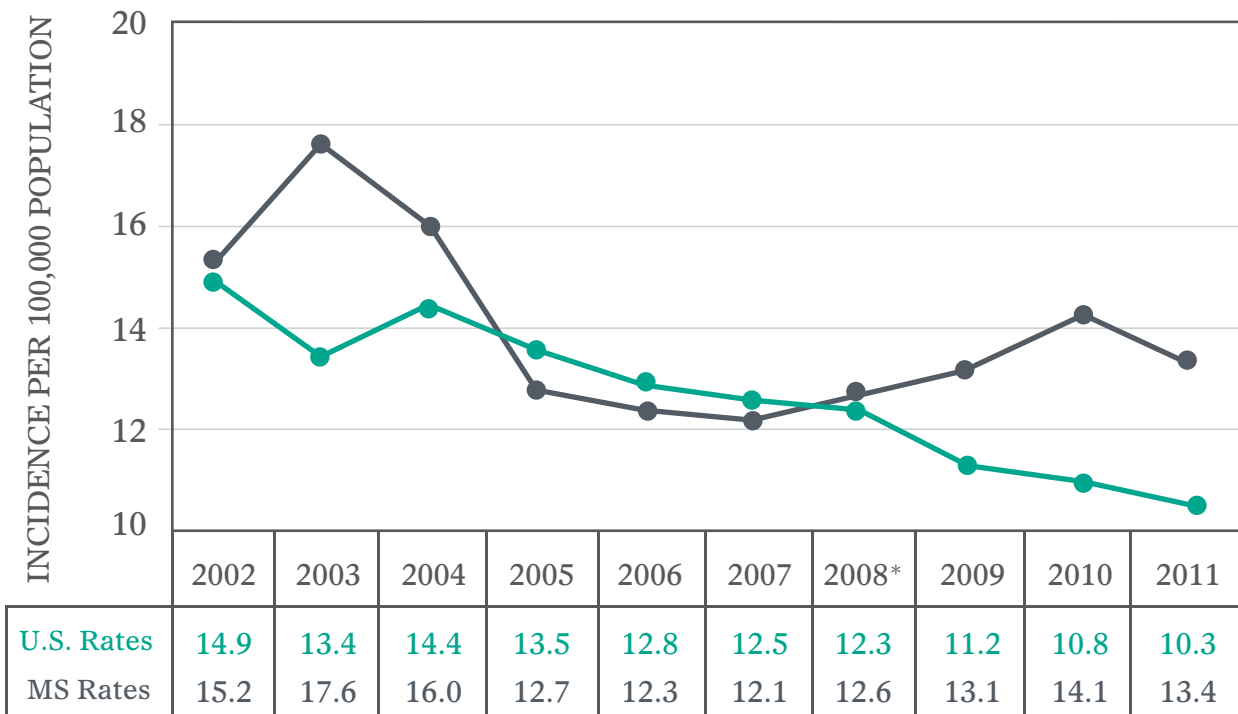


Infant Mortality Rate, Mississippi 2012: **Total 8.8 (down)**, **White 5.4 (down)**, **Nonwhite 13.1 (up)**

### TUBERCULOSIS CASES BY YEAR, UNITED STATES AND MISSISSIPPI, 2003-2012

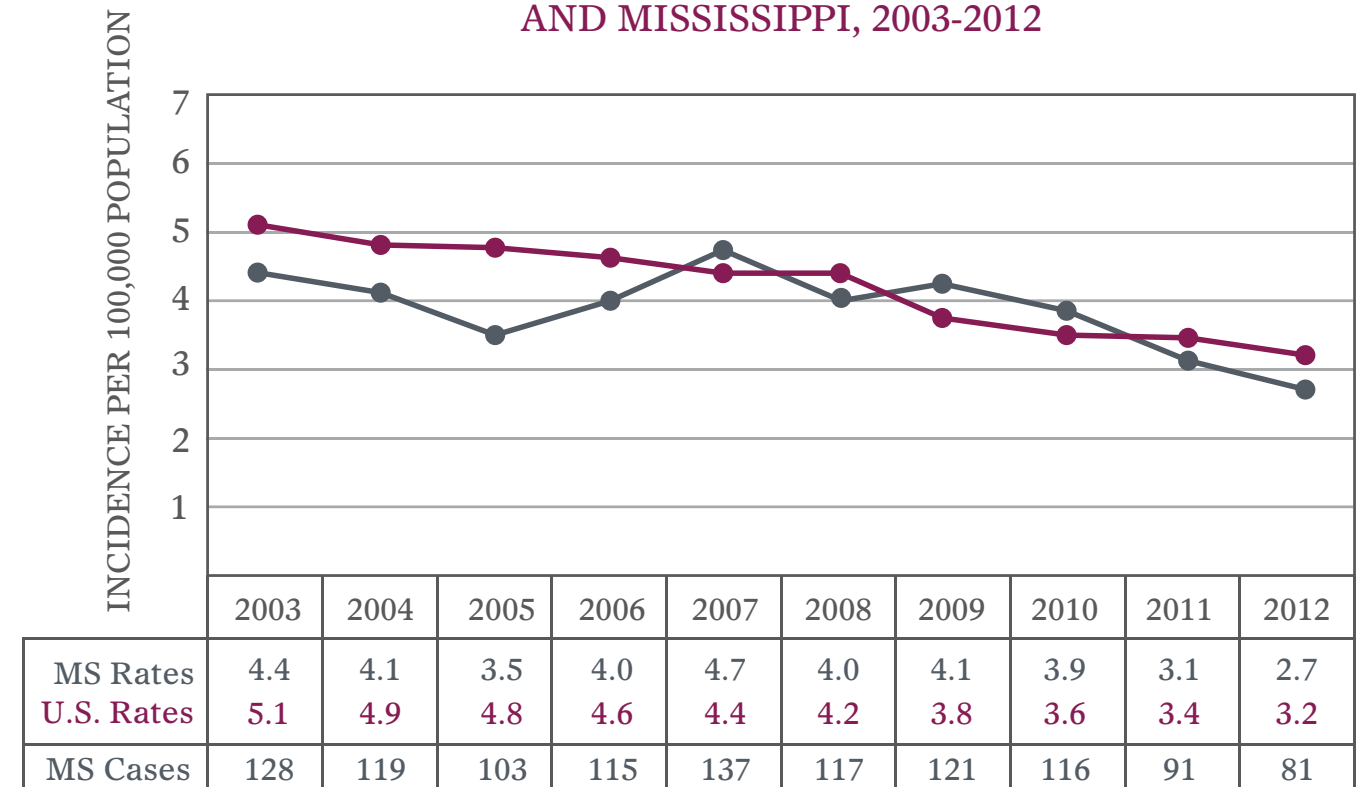


### AIDS RATES BY YEAR, UNITED STATES AND MISSISSIPPI, 2002-2011



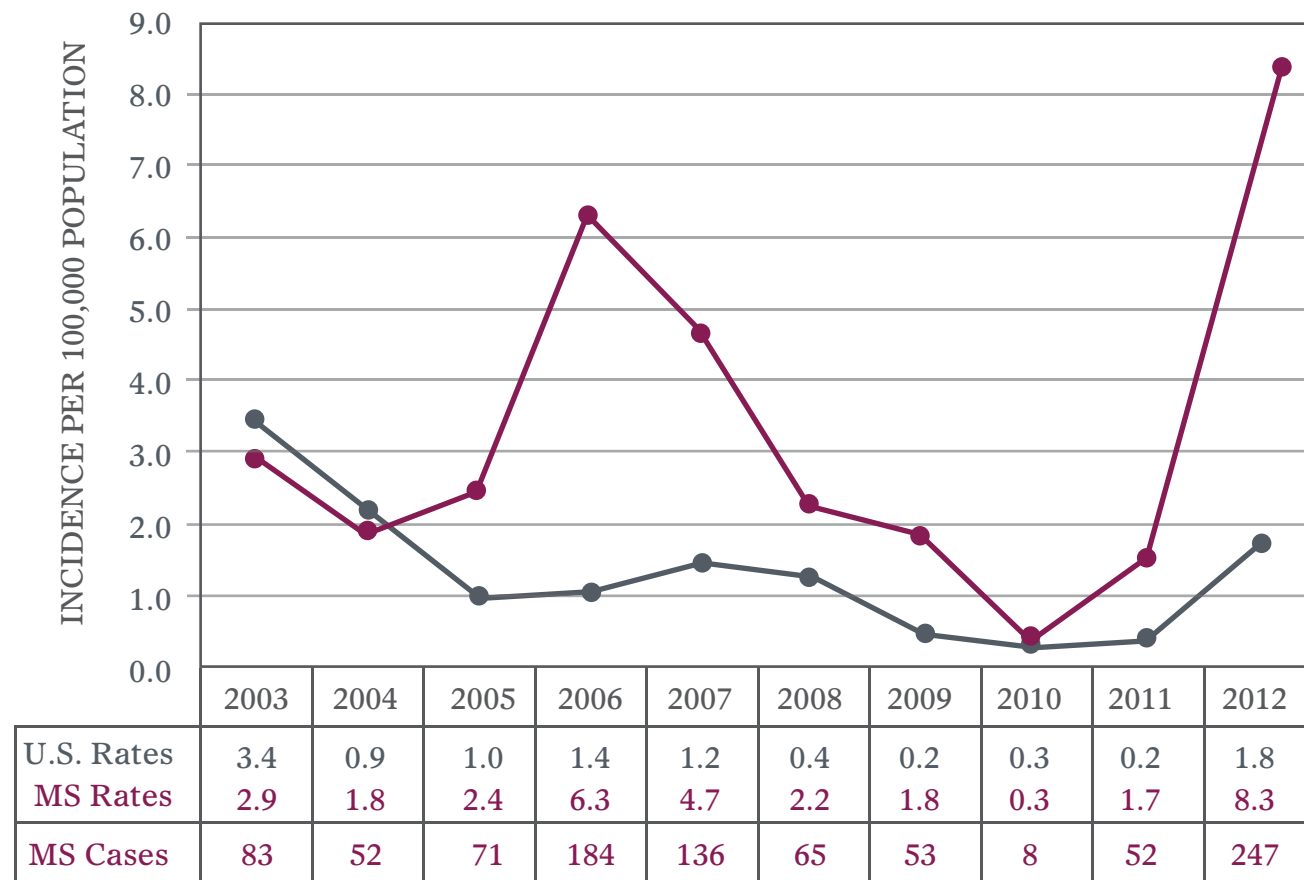
\*As of 2008, cases are no longer counted by year of report, but by year of AIDS diagnosis.

### TUBERCULOSIS RATES BY YEAR, UNITED STATES AND MISSISSIPPI, 2003-2012

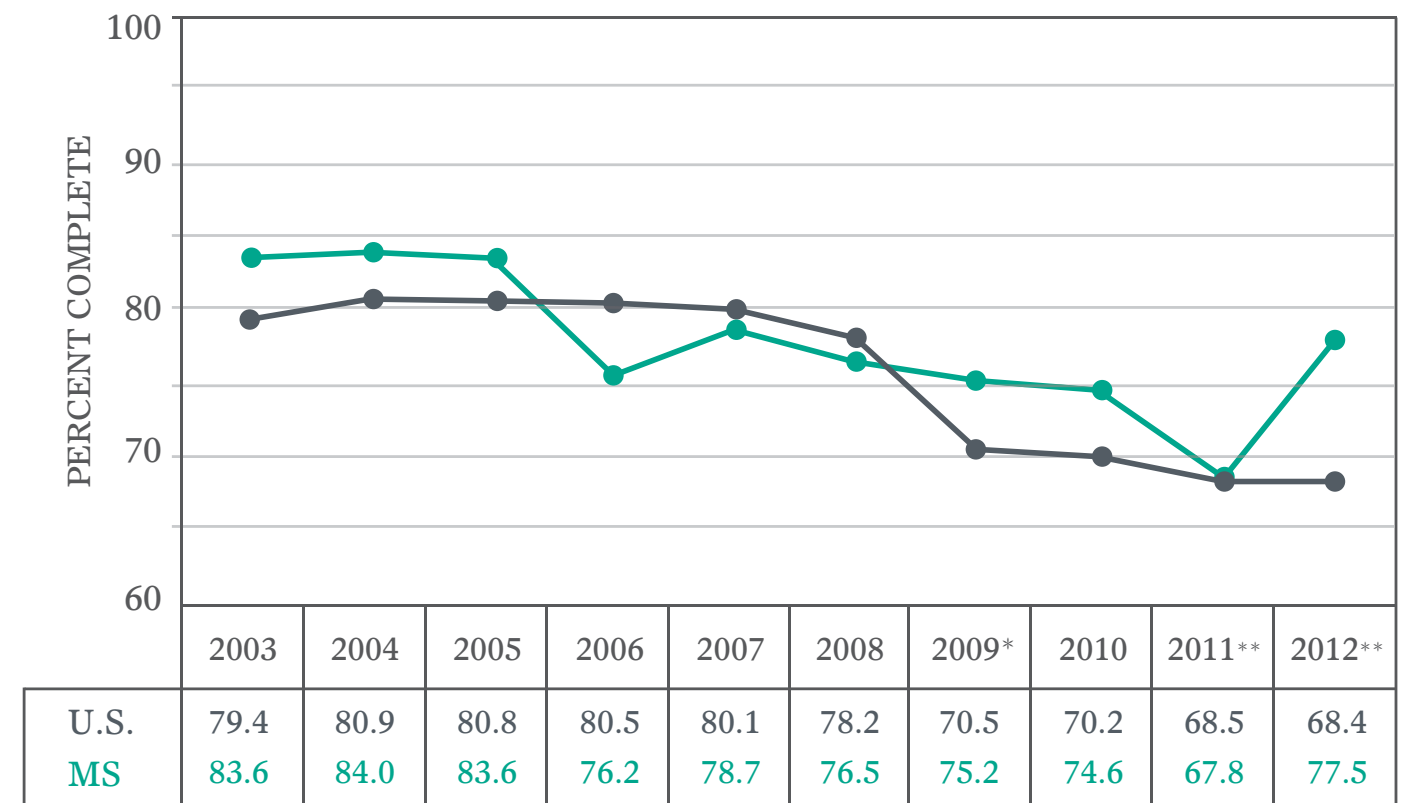




**WEST NILE VIRUS RATES BY YEAR,  
UNITED STATES AND MISSISSIPPI, 2003-2012**

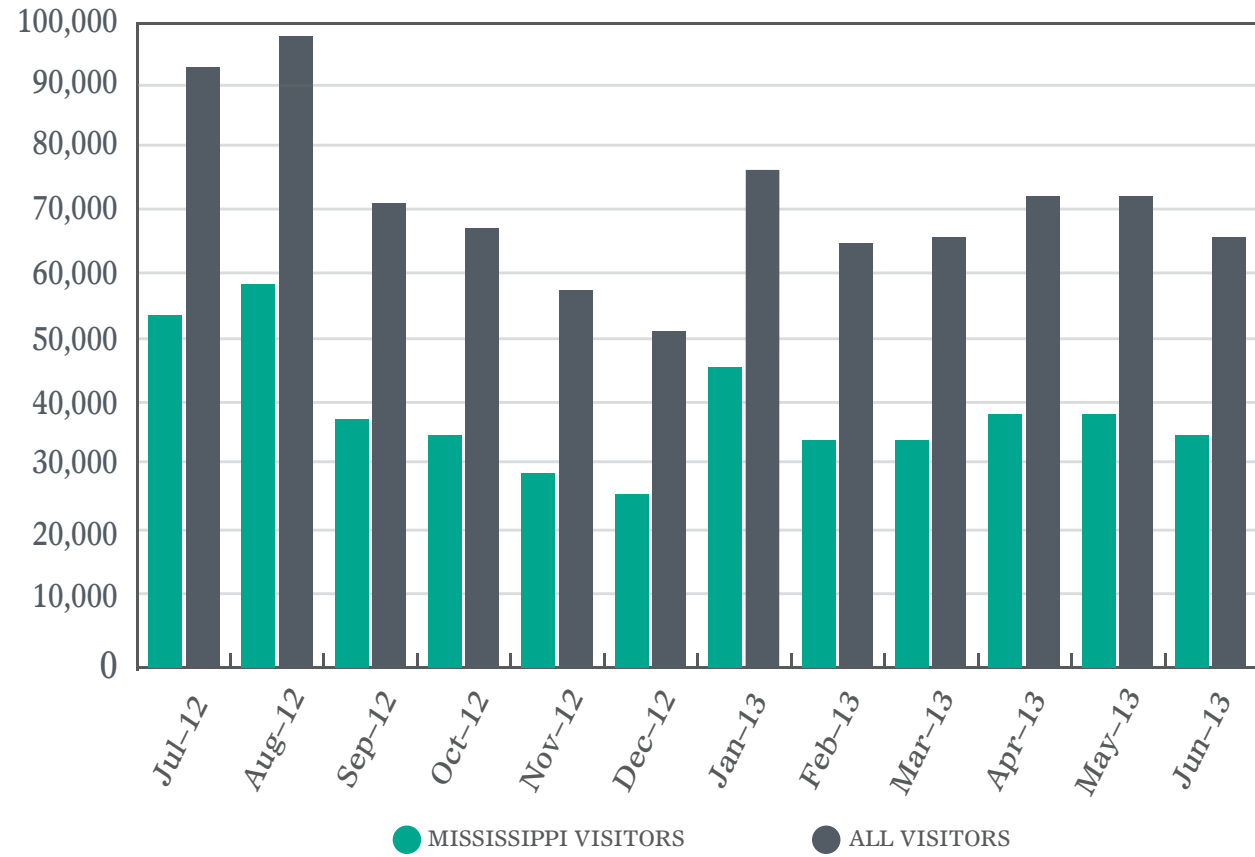


**VACCINATION COVERAGE AMONG CHILDREN 19-35 MONTHS,  
BY YEAR, MISSISSIPPI AND UNITED STATES**



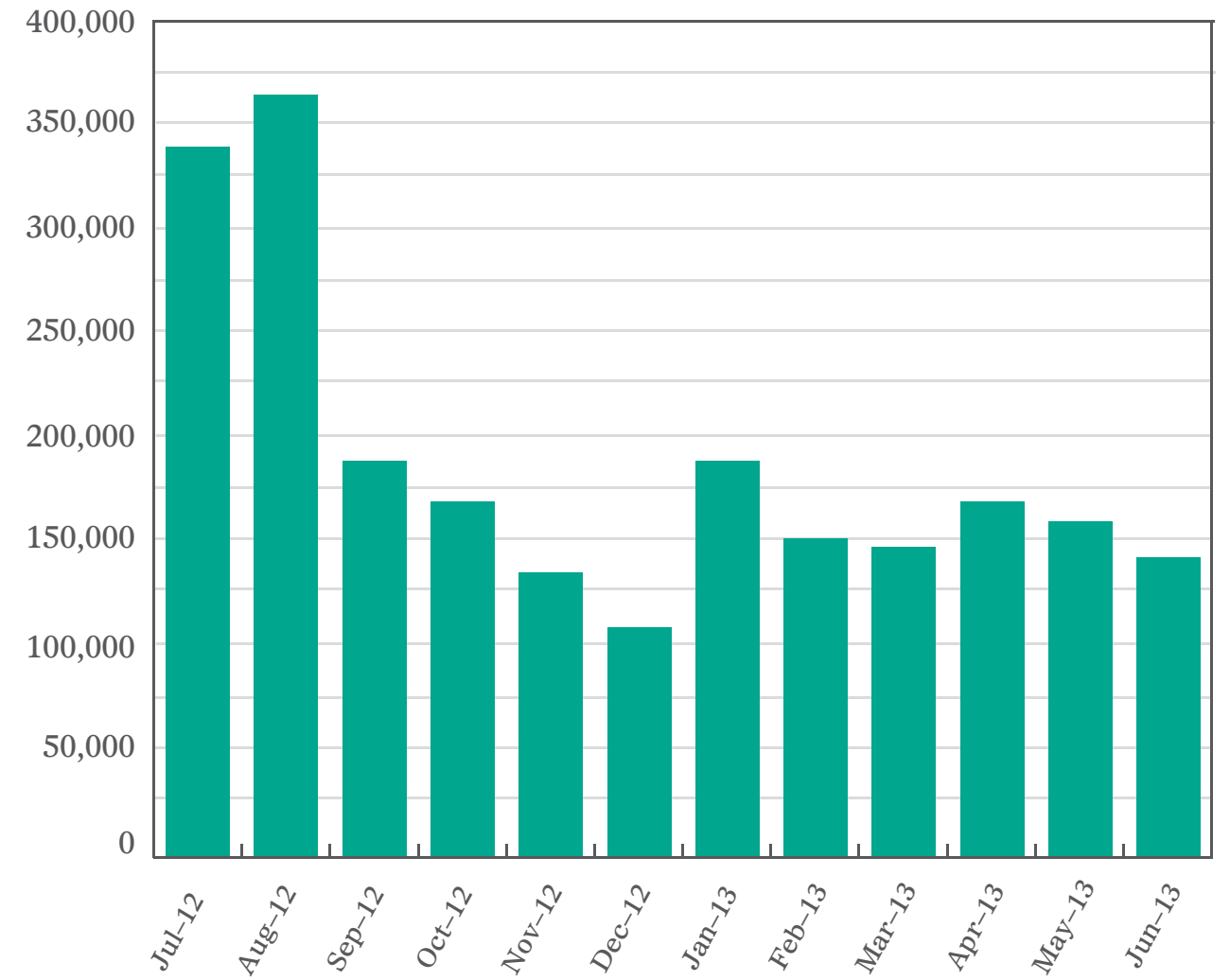
CDC - National Immunization Survey  
 4:3:1:3:3 (4 DTaP, 3 IPV, 1 MMR, 3 Hib, 3 HepB) for 2001-2008  
 4:3:1:0:3:1:4 (4 DTaP, 3 IPV, 1 MMR, 0 Hib, 3 HepB, 1 Var, 4 PCV) for 2009  
 \*Hib vaccine excluded due to shortage  
 4:3:1:3:3:1:4 (4 DTaP, 3 IPV, 1 MMR, 3 Hib, 3 HepB, 1 Var, 4 PCV) for 2010  
 4:3:1:3:3:1:4 (4 DTaP, 3 IPV, 1 MMR, 3 Hib, 3 HepB, 1 Var, 4 PCV) for 2011-2012  
 \*\*Full Series (FS) for Hib reported

**WEBSITE: TOTAL VISITORS, MISSISSIPPI AND WORLDWIDE**



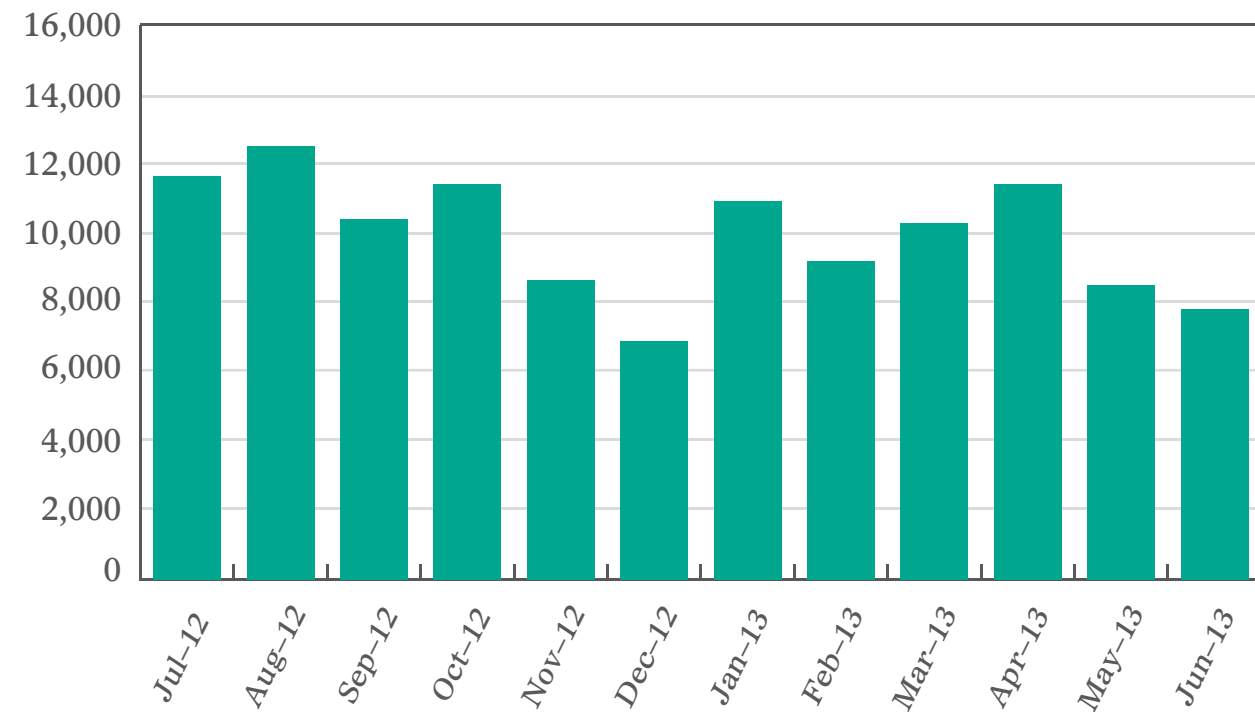
The MSDH website was visited by 458,437 Mississippi visitors and 852,871 total visitors in FY 2013, averaging about 1,760 Mississippi visitors per weekday.

**WEBSITE: TOTAL PAGE VIEWS**



2,239,686 MSDH web pages were viewed by Mississippi visitors in FY 2013, an average of about 8,600 per weekday.

**WEBSITE: TOTAL DOCUMENTS DOWNLOADED**



119,742 documents were downloaded by 35,958 Mississippi visitors in FY 2013, averaging about 460 documents per weekday.



## COMMUNICABLE DISEASES

HIV cases identified

547

YEAR

12

## HEALTH SERVICES



### CHILD HEALTH

Newborns screened for genetic disorders

37,613

## FAMILY PLANNING



Adult Patients Served

39,045

Teens Served

13,282

## Reproductive Health



Immunization doses administered

320,981

Tobacco Control



72

Cities in MS with smokefree air ordinances

## Dental Health



### ORAL HEALTH

Second-grade children served through dental sealant program

884

Primary Care Development



Food Establishments Permitted

13,734



AMBULATORY SURGICAL FACILITIES



## HEALTH PROTECTION

## COMMUNICATIONS



### WEB PAGE VISITS

715,010



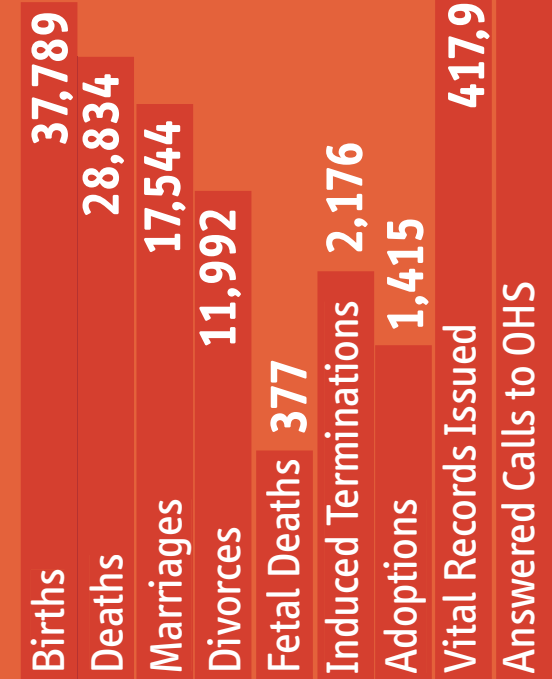
747

TELEVISION COVERAGE GENERATED

## INTERNET COVERAGE GENERATED



578



## VITAL STATISTICS

## PROGRAM ACTIVITIES AND STATISTICS

# MSDH PROGRAM ACTIVITIES AND STATISTICS

Clients, Facilities, Certificates and Inspections, Fiscal Year 2013 Report of Activities by Program

## COMMUNICABLE DISEASES

Immunization doses administered*	320,981
HIV cases identified**	547

\*Does not include VFC Provider immunizations

\*\*HIV cases are for calendar year 2012

## HEALTH SERVICES

### Child Health

Children (ages birth-21) encounters	35,079
Newborns screened for phenylketonuria, hypothyroidism, galactosemia, hemoglobinopathies, congenital adrenal hyperplasia, and other genetic disorders	37,613

### Children's Medical Program

Specialty/Clinic sessions per year	167
Patients enrolled in program	2,657

### WIC – Special Supplemental Nutrition Program for Women, Infants, and Children

#### (Average monthly participation)

Women	21,040
Infants	26,427
Children	48,137

### Women's Health

Pregnant women served	5,127
High-risk mothers and infants served through Perinatal High Risk Management/Infants Services System (PHRM)	23,038
Women screened for breast or cervical cancer (as of 6/30/13)	6,906

### Reproductive Health (Family Planning)

Adult patients served	39,045
Teens	13,282

### Oral Health

Population added through water fluoridation program	27,947
Population on recruited systems (pending activation)	14,937
Second-grade children served through dental sealant program	884

### Preventive Health

Child safety car seats distributed and installed	2,500
--	-------

### Tobacco Control

Number of unduplicated individuals who have completed the intake process for the MS Tobacco Quitline	7,390
Number of individuals participating in tobacco treatment programs through the MS ACT Centers	3,325
Number of counties with Tobacco-Free Coalitions implementing evidence-based programs consistent with CDC best practice guidelines	82
Number of cities in Mississippi with comprehensive smokefree air ordinances	72



## HEALTH PROTECTION

### Environmental Health

Boilers and pressure vessels inspected (including inspections done by insurance representatives, which are assured by MSDH)	16,354
Food establishments permitted	13,734
Inspections of food establishments	35,007
Wastewater complaints investigated	1,902
Water system inspections	1,238
Sewage disposal inspections and soil/site evaluations	8,552
Dairy farm inspections	416
Dairy samples collected for evaluation	1,419
Jail inspections performed	316

### Radiological Health and Safety

Radioactive materials licenses inspected	110
Healing Arts X-ray tubes inspected	2,504
Mammography units inspected	110
Environmental samples collected and analyzed for radioactivity around the Grand Gulf Nuclear Station and Salmon Test	665

### Emergency Medical Services/Trauma

Ambulance permits issued	673
Emergency medical technicians certified/recertified	1,966
EMS drivers certified/recertified	1,118
Emergency services licensed/relicensed	153
Designated trauma centers	83

### Licensure

Hospitals – accredited (licensed)	67
Hospitals – non-accredited (licensed)	49
Nursing facilities (licensed)	209
Home health agencies (licensed)	50
Intermediate care facilities for the mentally retarded (licensed)	16
Psychiatric Residential Treatment Facilities (licensed)	7
Personal Care Homes (licensed)	181
Hospices (licensed) (includes branches/satellites)	170
Ambulatory surgical facilities (licensed) (includes single specialty)	70
Community mental health centers (certified only)	8
Rural health clinics (certified only)	175
End-stage renal disease facilities (certified only)	75
Comprehensive outpatient rehabilitation facilities (certified only)	5
Portable X-ray (certified only)	7
Outpatient physical therapy facilities (certified only)	28
Abortion facilities (licensed)	1
CLIA laboratories (excluding VA labs) (certified only)	2,644
Utilization Review Agents	123
Health facilities surveyed	1,089
Health facility complaints investigated	840
Number of inspections of youth camps	87
Child residential care homes monitored per Notification Act X	12
Number of general/renewal inspections of daycare facilities	4,063
Daycare complaints investigated	495
Licenses issued for athletic trainers, audiologists, dietitians, hearing aid specialists, occupational therapists and occupational therapy assistants, respiratory care practitioners, speech-language pathologists, and professional art therapists	6,572
Total number of registered or certified radiation technologists, audiology aides, eye enucleators, speech language pathology aides, tattoo artists, body piercers, and hair braiders	5,418

### Planning and Resource Development

Certificate of Need (CON) applications reviewed	19
Declaratory rulings issued	61
Capital expenditures authorized through issued CONs and declaratory rulings	\$640,406,022

### Rural Health

Number of technical assistance/information requests processed	156
Number of critical access hospitals assisted	32

### Primary Care Development

Health Professional Shortage Area designation ratio reviews conducted:	
Primary Care	82
Dental	82
Mental Health (by catchment area)	15
Health Professional Shortage Area designations approved	453
J-1 physicians placed	5
Patients served through Mississippi Qualified Health Center grant program (FY 2012)	108,708

## COMMUNICATIONS\*

News releases produced	115
Web page visits	715,010
News release distribution – media outreach	1,370
Total number of media inquiries	604
Requests for public records (submittals and responses)	375
Agency forms created and revised	130
Original artwork designed and printed (public health campaigns)	348
Major news coverage	3,608
Television coverage generated	747
Newspaper coverage generated	2,283
Internet coverage generated	578

\*The Office of Communications does many public health campaigns generated through MSDH program areas, and this outreach is not reflected in the above figures.

## VITAL STATISTICS

### Calendar Year 2012

Births	37,789
Deaths	28,834
Marriages	17,544
Divorces	11,992
Fetal deaths	377
Induced terminations	2,176
Adoptions	1,415
Certified copies of vital records issued	417,918
Answered calls to the Office of Health Statistics	104,148

Federal FEDERAL federal

FEDERAL FEDERAL FEDERAL

FEES & OTHER FEES & OTHER FEES & OTHER

FEDERAL FEDERAL FEDERAL

General Funds GENERAL FUNDS LOCAL GOVERNMENT AND RURAL WATER

Tobacco Control TOBACCO CONTROL TOBACCO CONTROL

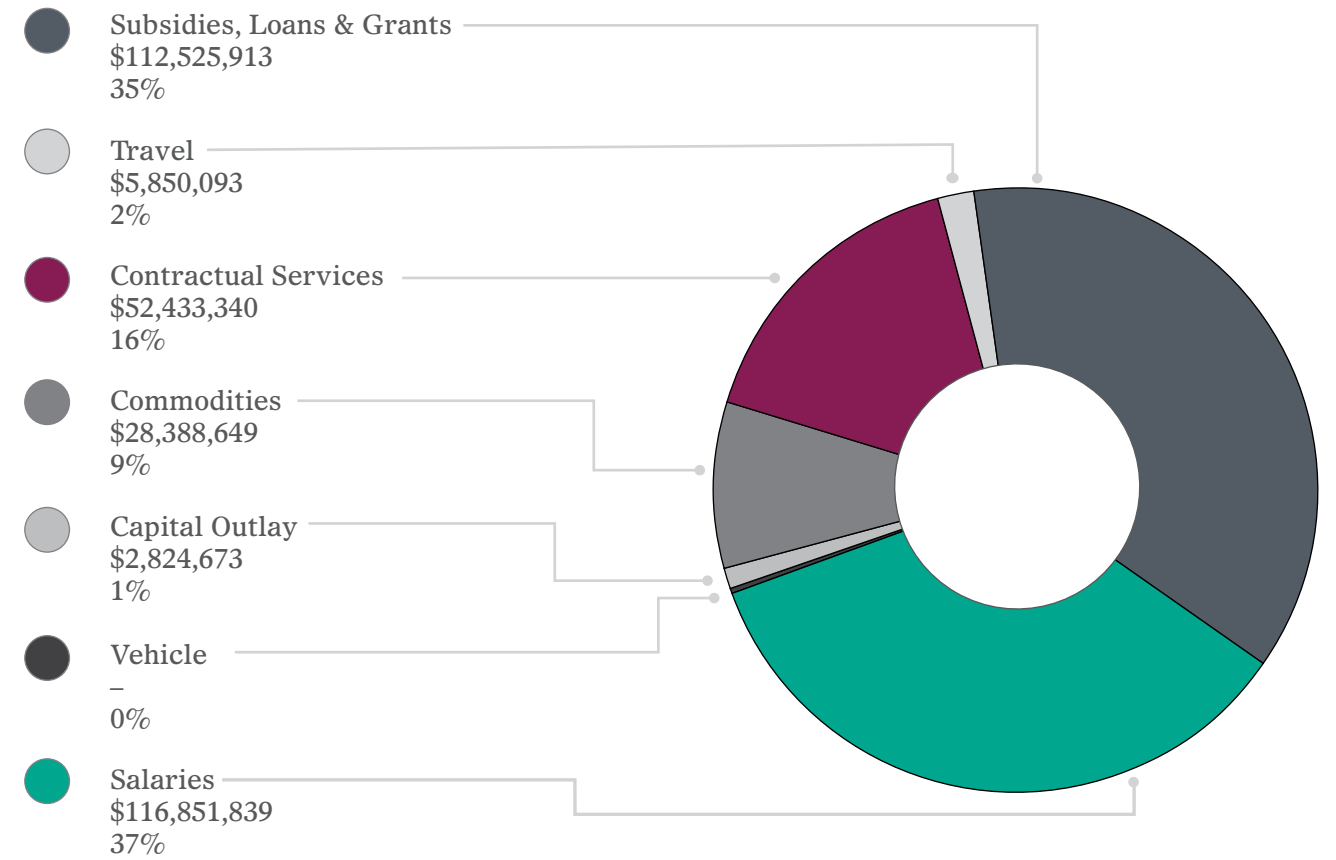
Contractual Services CONTRACTUAL SERVICES CONTRACTUAL SERVICES

Salaries SALARIES SALARIES SALARIES

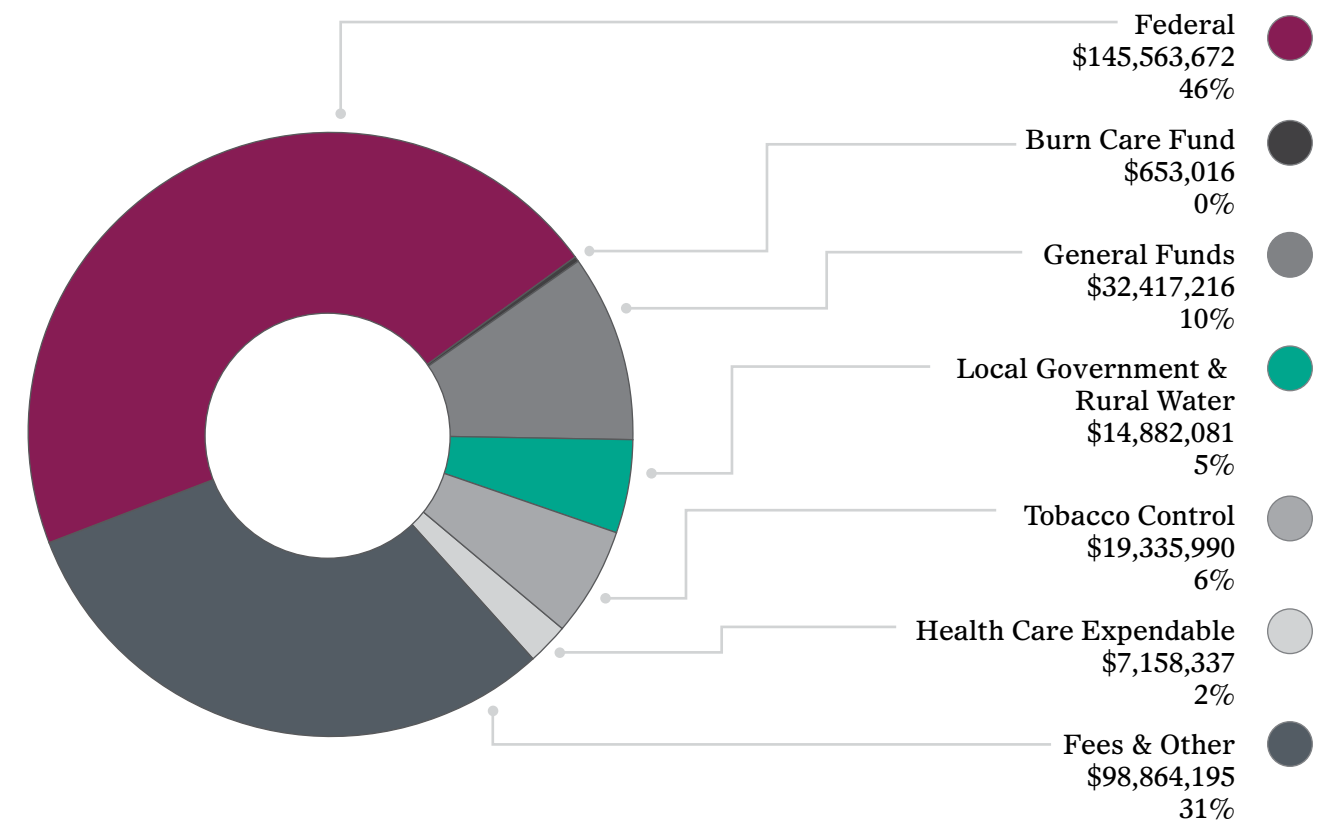
HEALTH CARE EXPENDABLES

FISCAL YEAR 2013: EXPENDITURES, TRAVEL AND VEHICLE REPORTS

## FISCAL YEAR 2013 EXPENDITURES BY MAJOR CATEGORY



## FUNDING SOURCES FOR FISCAL YEAR 2013 EXPENDITURES





## EXPENDITURE FUNDING SOURCES FOR FISCAL YEARS 2009–2013

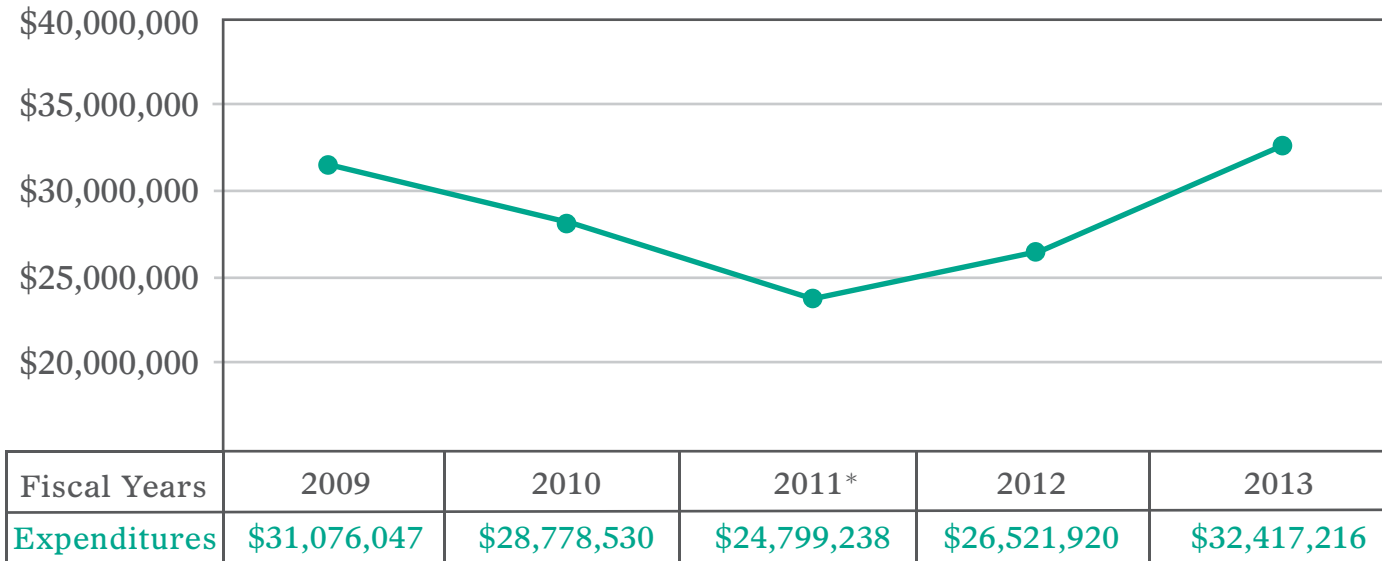
	2009	2010	2011	2012	2013
General Funds <sup>1</sup>	\$ 31,076,047	\$ 28,778,530	\$ 24,799,238	\$ 26,521,920	\$ 32,417,216
Federal	152,073,405	167,058,771	169,143,197	149,866,741	145,563,672
Fees and Other	112,225,242	109,871,007	94,925,415	111,165,211	98,864,195
Health Care Expendable <sup>2</sup>	7,158,337	7,158,337	6,578,070	10,282,501	7,158,337
Tobacco Control <sup>3</sup>	16,049,641	17,610,643	22,317,838	18,043,151	19,335,990
Local Government & Rural Water	14,009,178	36,088,067	31,713,613	20,716,657	14,882,081
Burn Care	478,500	1,088,997	1,159,432	1,892,173	653,016
<b>Total</b>	<b>\$333,070,350</b>	<b>\$367,654,352</b>	<b>\$350,636,803</b>	<b>\$338,488,354</b>	<b>\$318,874,507</b>

<sup>1</sup>In FY 2011, the general fund amount included \$959,891 in funds transferred by the Legislature to the Division of Medicaid to fund the federal government's extension in increased Federal Medical Assistance Percentage (FMAP) provided for in the American Recovery and Reinvestment Act of 2009.

<sup>2</sup>In FY 2012 and FY 2013, the Health Care Expendable fund amount includes expenditures for carry-forward funds authorized to be escalated and spent according to the corresponding fiscal year appropriation bill.

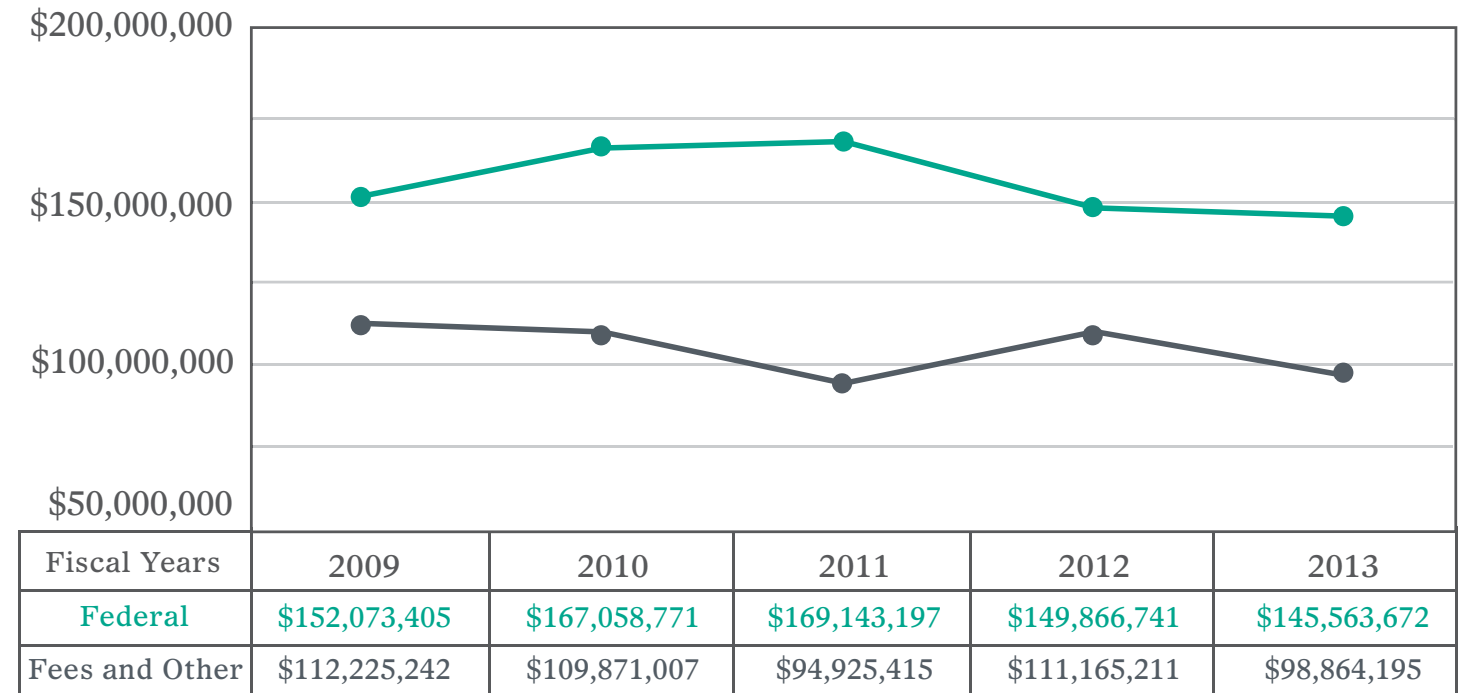
<sup>3</sup>In FY 2011, FY 2012, and FY 2013, the Tobacco Control fund amount includes expenditures for carry-forward funds authorized to be escalated and spent according to the corresponding fiscal year appropriation bill.

## GENERAL FUND EXPENDITURES



\*In FY 2011, the general fund amount included \$959,891 in funds transferred by the Legislature to the Division of Medicaid to fund the federal government's extension in increased Federal Medical Assistance Percentage (FMAP) provided for in the American Recovery and Reinvestment Act of 2009.

## SPECIAL FUND EXPENDITURES



## EXPENDITURES BY MAJOR CATEGORY FOR FISCAL YEARS 2009–2013

	2009	2010	2011	2012	2013
Salaries	\$111,647,064	\$115,586,622	\$115,680,331	\$114,399,699	\$116,851,839
Travel	5,631,587	6,042,745	5,349,311	5,462,098	5,850,093
Contractual Services	47,115,362	55,959,630	51,517,403	50,403,376	52,433,340
Commodities	30,910,820	30,563,161	29,567,124	28,560,447	28,388,649
Capital Outlay	4,025,159	4,213,579	5,677,693	4,781,057	2,824,673
Vehicles		166,827	93,899		
Wireless Comm. Devices					
Subsidies, Loans & Grants	133,740,358	155,121,788	142,751,042	134,881,677	112,525,913
<b>Total</b>	<b>\$333,070,350</b>	<b>\$367,654,352</b>	<b>\$350,636,803</b>	<b>\$338,488,354</b>	<b>\$318,874,507</b>

## OUT OF STATE TRAVEL REPORT

### EXPENDITURES BY PROGRAM FOR FISCAL YEARS 2009-2013

	2009	2010	2011	2012	2013
Chronic Illness	\$ 10,129,361	\$ 10,818,474	\$ 7,001,154	\$ 6,173,745	\$ 6,345,113
Disease Prevention	52,629,803	54,539,808	59,451,137	55,767,958	58,920,619
Environmental Health	17,967,789	18,203,929	16,477,222	15,054,604	16,552,178
Health Care Planning & Licensure	41,932,896	41,996,160	37,175,487	42,723,630	31,807,461
Maternal & Child Health	146,624,869	150,138,825	145,306,877	146,403,145	137,449,839
Support Services	19,305,801	21,575,888	24,324,862	26,295,491	26,854,376
Tobacco Control	16,053,878	17,610,643	22,317,838	18,043,151	19,335,990
Bioterrorism	13,938,275	15,593,561	5,709,181	5,417,800	6,073,834
Local Government & Rural Water	14,009,178	36,088,067	31,713,613	20,716,657	14,882,081
Burn Care	478,500	1,088,997	1,159,432	1,892,173	653,016
<b>Total</b>	<b>\$333,070,350</b>	<b>\$367,654,352</b>	<b>\$350,636,803</b>	<b>\$338,488,354</b>	<b>\$318,874,507</b>

Name	Place	Purpose	Cost Source
AINSWORTH, PAMELA J	DALLAS, TX	KNOWLEDGE IN OPERATIONALIZING THE NEW MEASURES & ASSOCIATED DATA ELEMENTS	\$447.00 Federal
AINSWORTH, PAMELA J	ATLANTA, GA	TO ENGAGE IN INTERACTIVE LEARNING SESSIONS AND BRIEFING ON NATIONAL PREPAREDNESS ISSUES	\$650.00 Federal
ALDRIDGE, KARA MICHELLE MAGEE	TOCOMA, WA	NATIONAL RURAL RECRUITMENT AND RETENTION NETWORK WILL PROVIDE STAFF ENRICHMENT OPPORTUNITIES	\$1,053.00 Federal
ALDRIDGE, KARA MICHELLE MAGEE	KANSAS CITY, MO	WILL PROVIDE STAFF OPPORTUNITIES FOR RECRUITMENT BY THE STATE FOR PRIMARY CARE PROVIDERS	\$1,798.00 Federal
ALDRIDGE, KARA MICHELLE MAGEE	ATLANTA, GA	REQUIRED TO ENGAGE IN HEALTHCARE PROFESSIONAL WORKSHOP TRAINING & RECRUITMENT TO RURAL AREAS	\$1,291.00 Federal
ALDRIDGE, KARA MICHELLE MAGEE	MEMPHIS, TN	TRAINING AND WORKFORCE DEVELOPMENT OF CONRAD STATE301 J-1 WAIVER PROGRAM TO INCREASE ACCESS TO CARE	\$706.00 Federal
ALDRIDGE, KARA MICHELLE MAGEE	WASHINGTON, DC	TO PROMOTE EMPLOYMENT FOR OUR STATE IN MEDICALLY UNDERSERVED AND RURAL AREAS	\$2,002.00 Federal
ALDRIDGE, KARA MICHELLE MAGEE	DESTIN, FL	INFORMATION ABOUT DENTAL FIELD, DENTAL PROGRAMS AND OFFICE OPERATION THAT WILL BE BENEFICIAL TO THE	\$1,874.00 Federal
ALDRIDGE, KARA MICHELLE MAGEE	ORLANDO, FL	TO IMPROVE THE SUPPLY OF A DISTRIBUTION OF QUALIFIED HEALTH PROFESSIONALS FOR THE UNDERSERVED AREAS	\$1,340.00 Federal
ALDRIDGE, KARA MICHELLE MAGEE	HUNTSVILLE, AL	TO PROVIDE ASSISTANCE IN RECRUITMENT TO MEDICALLY UNDERSERVED AND RURAL AREAS	\$685.00 Federal
ALDRIDGE, KARA MICHELLE MAGEE	GRAPEVINE, TX	HEALTHCARE PROFESSIONAL WORKSHOP, TRAINING AND RECRUITMENT ACTIVITIES	\$1,170.00 Federal
ALLEN, PERRY B	NEW ORLEANS, LA	CONFERENCE WILL ENHANCE/IMPROVE CLINICAL PROCEDURES SUCH AS UROGENITAL EXAMINATION	\$567.00 Federal
ALLEN, PERRY B	ALEXANDRIA, VA	IT WILL HELP MSDH WITH IMPLEMENTATION FAMILY PLANNING PROGRAM FOR AFFORDABLE CARE ACT CHANGES	\$1,238.00 Federal
ALLRED, WANDA	ATLANTA, GA	EDUCATIONAL UPDATES ON INNOVATIONS TO REDUCE FUTURE TB CASES, TB DIAGNOSIS	\$840.00 General
ANDERSON, CAROLYN J	WASHINGTON, DC	OVERVIEW OF CURRENT 340B PROGRAM AND DRUG PRICING IN GENERAL/STRATEGIES IMPILORED BY ADAP	\$923.00 Federal
ANDERSON, NAN	SAN ANTONIO, TX	REQUIRED COURSE FOR ALL HOSPITAL SURVEYORS FOR UPDATES, HOT TOPICS AND QUALITY ASSURANCE	\$2,375.00 Federal
ANDERSON, NAN	TALLAHASSEE, FL	TRAINING COURSE FOR ALL HEALTH FACILITY SURVEYORS WHO INVESTIGATE COMPLAINTS IN HEALTH FACILITIES.	\$599.00 Federal
ANTHONY, MICHAEL GLEN	BURLINGTON, VT	PROJECT TO REDUCE INSTANCES OF OBESITY THROUGH INCREASED ACCESS TO FRESH HEALTHY FOODS	\$309.00 Federal
ANTHONY, MICHAEL GLEN	LITTLE ROCK, AR	LEARN HOW TO ORGANIZE LOCAL PRODUCERS & BRING ACCESS TO HEALTHY FOODS THROUGH COMMUNITY FARM MARKET	\$176.00 Federal
ARMSTRONG, MARY GAYLE	SAN ANTONIO, TX	REQUIRED COURSE FOR ALL HOSPITAL SURVEYORS FOR UPDATES, HOT TOPICS AND QUALITY ASSURANCE	\$1,739.00 Federal
ARMSTRONG, MARY GAYLE	ATLANTA, GA	CMS STATE SURVEY AGENCY DIRECTOR MEETING & FALL COLLABORATIVE REQUIRED MEETING	\$808.00 Federal
AUSTIN, MICHELLE	MADISON, WI	CMS REQUIRED COURSE FOR CARE FACILITIES FOR INTELLECTUALLY DISABLED	\$1,912.00 Federal
AUSTIN, MICHELLE	DALLAS, TX	COURSE IS REQUIRED FOR LONG TERM CARE SURVEYORS FOR BASIC INFORMATION & TRAINING LTC NURSING HOMES	\$990.00 Federal
BAILEY, PATRICIA ANN	MONTGOMERY, AL	TO DISCUSS PROGRAMMATIC PROCESS OFFERING GUIDANCE TO BEST PRACTICES FOR CYSHCN DIRECTORS	\$515.00 Federal
BAILEY, PATRICIA ANN	WASHINGTON, DC	WILL PROVIDE STRATEGIC INSIGHT TO IMPROVING MCH OUTCOMES BY SHARING EFFECTIVE & BEST PRACTICES	\$1,692.00 Federal
BAILEY, PATRICIA ANN	ATLANTA, GA	REQUIRED MEETING FOR GRANT FUNDING TO DISCUSS COMPONENTS OF THE GRANTS	\$375.00 Federal
BASS, SUZETTE M	ORLANDO, FL	WORKSHOP FOCUSES ON FOOD SAFETY INSPECTION AND APPLICATION OF GMP REGULATIONS	\$1,986.00 General
BASS, SUZETTE M	ST. LOUIS, MO	WILL PROVIDE INFORMATION REGARDING MANUFACTURED FOOD PRODUCTS TO MEET GOALS FROM OUR RRI PROJECT	\$873.00 Federal
BATES, SUSAN A	ORLANDO, FL	WORKSHOP FOCUSED ON FOOD SAFETY INSPECTIONS AND APPLICATION OF GMP REGULATIONS	\$2,060.00 Federal
BATES, SUSAN A	ORLANDO, FL	REQUIREMENT OF THE FDA GRANT MEET WITH FLORIDA RAPID RESPONSE TEAM TO LEARN BEST PRACTICES	\$1,113.00 Federal
BISH, CONNIE L	ATLANTA, GA	REQUIRED MEETING FOR GRANT FUNDING TO DISCUSS COMPONENTS OF THE GRANTS	\$413.00 Federal
BLAIBLOCK, SHARI	BATON ROUGE, LA	COURSE WILL COVER VARIETY OF TOPICS, FOOD ALLERGIES, OBESITY & HOW FOOD/NUTRIENTS AFFECT THE BRAIN CELLS	\$38.00 Federal
BLAIBLOCK, SHARI	BATON ROUGE, LA	SKILLS TO INTERACT MORE EFFECTIVELY WITH HIGH CONFLICT PEOPLE AS NEEDED IN PUBLIC HEALTH SECTOR	\$94.00 Federal
BOLDEN, SUBRINA LYNN	NASHVILLE, TN	WILL PROVIDE TRAINING TO IMPROVE SKILL IN IMPLEMENTING EVIDENCE BASED STRATEGIES TO HELP COMMUNITIES	\$1,378.00 Other
BOMAR, SANDRA CAROL	ATLANTA, GA	TO ENGAGE IN INTERACTIVE LEARNING SESSIONS AND BRIEFING ON NATIONAL PREPAREDNESS ISSUES	\$942.00 Federal
BOOKER, DEGINA REDD	RALEIGH, NC	WILL PROVIDE VALUABLE INSIGHT FOR GRANT MANAGEMENT FOR UPCOMING CYCLE	\$1,710.00 Federal
BOONE, SUSAN	WASHINGTON, DC	DESIGNED FOR PART C COORDINATORS/ADMINISTRATORS & STAFF OF IDEA PROGRAMS	\$614.00 Fed/Other
BOONE, SUSAN	WASHINGTON, DC	TRAINING DESIGNED SPECIFICALLY FOR STATE ICC CHAIRS ASSISTING IN IMPLEMENTATION OF EARLY INTERVENTION	\$1,620.00 Federal
BOONE, SUSAN	ATLANTA, GA	WILL PROVIDE REQUIRED UPDATED IDEAS ON NEW PART C REGULATIONS FOR FIRST STEPS EI PROGRAM	\$67.00 Fed/Other
BOONE, SUSAN	TAMPA, FL	PROVIDE PART C COORDINATORS UPDATED INFORMATION ON OSEP SYSTEMS CHANGES	\$543.00 Fed/Other
BOWMAN, MELANIE JEAN	SAN FRANCISCO, CA	WILL PRESENT ABSTRACT SUBMITTED ON COMMUNITY HEALTH WORKER CERTIFICATION PROGRAM	\$2,015.00 Federal
BOYKIN, CHARLES E	NEW ORLEANS, LA	PROVIDE GOVERNMENT AGENCIES AND PRIVATE INDUSTRIES WITH DEMOS OF THE LATEST INFORMATION TECHNOLOGY	\$199.00 Federal
BRADLEY, DARLENE	ATLANTA, GA	OPPORTUNITIES TO NETWORK WITH LABORATORIES AND EPIDEMIOLOGISTS IN THE PULSENET NETWORK	\$1,387.00 Federal
BRANTLEY, CHRISTI C	FORT WORTH, TX	TO MAINTAIN DATA RELATED TO PUBLIC WATER SYSTEMS UP TO DATE SOFTWARE FEATURES	\$1,276.00 Federal
BRINSON, ALISHA MARQUITA	NEW ORLEANS, LA	TO DISCUSS WITH STAKEHOLDERS CURRENT REPORTS AVAILABLE IN SENTINEL IN AN EFFORT TO REVAMP THE REPORT	\$681.00 Federal
BRINSON, ALISHA MARQUITA	PASADENA, CA	INVITED TO PRESENT AT 2013 CSTE ANNUAL CONFERENCE ABSTRACT COMPARISON	\$2,806.00 Federal
BRITTON, ROMELLE	SAN DIEGO, CA	GAIN VALUABLE INFORMATION ON EXAMINATION PREPARATION PROCEDURES AS IT RELATES TO STANDARDIZED TESTING	\$1,324.00 Other
BROWN, JASON R	ATLANTA, GA	REVERSE SITE VISIT WITH MDHC TO DISCUSS STRATEGIES FOR EVALUATING CLINICAL INITIATIVES	\$1,912.00 Federal
BROWN, KIMALESHA TRAMAIN	ATLANTA, GA	WILL PRESENT AN ABSTRACT HIGHLIGHTING MS ACCOMPLISHMENTS IN REGARDS TO TOBACCO CESSATION EFFORTS	\$1,067.00 Other
BROWN, SHANEKA L	DALLAS, TX	COURSE IS REQUIRED FOR LONG TERM CARE SURVEYORS FOR BASIC INFORMATION & TRAINING LTC NURSING HOMES	\$1,003.00 Federal
BULLOCK, BRITNEY JORDONNA	BIRMINGHAM, AL	IMPROVE SKILLS & UPDATES IN NUTRITION STANDARDS OF INFANTS, CHILDREN & ADOLESCENTS, NETWORKING	\$1,121.00 Federal
BULLOCK, BRITNEY JORDONNA	LOS ANGELES, CA	CONFERENCE COVERS CURRENT & EMERGING NUTRITION & BREASTFEEDING SCIENCE, RESEARCH, POLICY AND PRACTICES	\$1,739.00 Federal
BURK, KATHY GIBSON	SAN ANTONIO, TX	WILL PROVIDE LEARNING ON HEALTH CARE REFORM, LIFE COURSE & ADOLESCENTS SESSION ADDRESSING MAH ISSUES	\$799.00 Federal
BURK, KATHY GIBSON	CHARLOTTE, NC	CURRENT ISSUE REGARDING OBESITY AND HEALTHCARE POLICY, SOLUTIONS, PREVENTION	\$1,197.00 Federal
BURK, KATHY GIBSON	SAN FRANCISCO, CA	PROVIDE CURRENT INFO ON PUBLIC HEALTH MATERNAL CHILD HEALTH RESEARCH, HEART DISEASE & STROKE PREV.	\$2,593.00 Federal
BURK, KATHY GIBSON	WASHINGTON, DC	WILL PROVIDE STRATEGIC INSIGHT TO IMPROVING MCH OUTCOMES BY SHARING EFFECTIVE & BEST PRACTICES	\$1,765.00 Federal
BURK, KATHY GIBSON	WASHINGTON, DC	TO DISCUSS FEDERAL INITIATIVES AFFECTING THE HEALTH & NUTRITIONAL WELL-BEING OF WIC MOTHERS & CHILDREN	\$1,925.00 Federal

# OUT OF STATE TRAVEL REPORT

Name	Place	Purpose	Cost	Source
BURK, KATHY GIBSON	CHAPEL HILL, NC	IMPROVING REPRODUCTIVE HEALTH PLANNING, LATEST FP POLICY OVERVIEWS AND STANDARDS	\$772.00	Federal
BURK, KATHY GIBSON	BIRMINGHAM, AL	TO KEEP ABREAST OF PUBLIC HEALTH ISSUES WITH OTHERSTATES, BRAINSTORMING & PROBLEM SOLVING	\$186.00	Federal
BURK, KATHY GIBSON	ATLANTA, GA	REQUIRED MEETING FOR GRANT FUNDING TO DISCUSS COMPONENTS OF THE GRANTS	\$412.00	Federal
BYERS, PAUL E	CHARLESTON, WV	TO LEARN ABOUT NEW TOPICS IN EPIDEMIOLOGY AS WELL AS NETWORK WITH EPIDEMIOLOGISTS	\$1,395.00	Other
BYERS, PAUL E	PASADENA, CA	INVITED TO PRESENT AT 2013 CSTE ANNUAL CONFERENCE ABSTRACT COMPARISON	\$2,465.00	General
CALVERT, MATTHEW J	SARASOTA, FL	MICROSOFT CERTIFIED SQL SERVER 2012 TRAINING TO LEARN NEW FEATURES AND SKILLS	\$196.00	Federal
CAMPBELL, JANE P	RALEIGH, NC	WILL PROVIDE VALUABLE INSIGHT FOR GRANT MANAGEMENT FOR UPCOMING CYCLE	\$1,545.00	Federal
CANNON, GENEVA	BALTIMORE, MD	PROVIDE VALUABLE INFORMATION ON THE MOST CURRENT SCIENTIFIC AND CLINICAL RESOURCES	\$1,175.00	Federal
CANNON, GENEVA	ATLANTA, GA	REQUIRED MEETING FOR GRANT FUNDING TO DISCUSS COMPONENTS OF THE GRANTS	\$381.00	Federal
CARMICHAEL, ROBIN	GLENDALE, CO	BASIC CONCEPT OF DISEASE INTERVENTION WITH EMPHASIS ON INTERVIEWING AND STD CASE MANAGEMENT	\$2,168.00	Federal
CARMICHAEL, ROBIN	BLOOMINGTON, IN	TRAINING OPTIONS TO DELIVER PARTNER SERVICES RECOMMEND BY CDC FOD HIV INFECTION, SYPHILLIS, GONORRHEA	\$90.00	Federal
CARTER, LELAA	WASHINGTON, DC	LEARN THE LATEST DEVELOPMENTS IN WIC EBT AND STEPS & PROCESSES NECESSARY TO PLAN AND IMPLEMENT WIC EBT	\$1,560.00	Federal
CHANAY, SAWIYYAH	WASHINGTON, DC	REQUIRED FOR GRANT AWARD/TRAINING IN POLICY, SYSTEM AND IMPROVING THE ROLE OF PUBLIC HEALTH IN CANCER PREV.	\$1,356.00	Federal
CHANAY, SAWIYYAH	ST. AUGUSTINE, FL	ALLOWS PROGRAM DIRECTORS TO DEVELOP COMPREHENSIVE MODEL TO ADDRESS BREAST & CERVICAL PREVENTION	\$156.00	Federal
CHANE, JONATHAN MAX	DALLAS, TX	KNOWLEDGE IN OPERATIONALIZING THE NEW MEASURES & ASSOCIATED DATA ELEMENTS	\$586.00	Federal
CHANE, JONATHAN MAX	CHARLOTTE, NC	TRAINING FOR FULL SALE EXERCISES WITH NC MOBILE FIELD HOSPITAL	\$138.00	Federal
CHINTHAKUNTLA, VIJAYAL	NEW ORLEANS, LA	PROVIDE THE LATEST EVIDENCE-BASED PRACTICES IN THE FIELD OF LACTATION TO BETTER SERVE BREASTFEEDING	\$751.00	Federal
CLARK, BRENDA R	GATLINBURG, TN	TRAINING CONFERENCE FOR UPDATE ON CURRENT FOOD SAFETY ISSUES FACING THE SOUTHERN STATES	\$568.00	Other
CLARK, BRENDA R	NASHVILLE, TN	DISCUSS THE TRENDS IN MARKET CONCERNING LOCALLY GROWN PRODUCTS, FOOD REGULATION AND SAFETY ISSUES	\$383.00	Federal
CLARK, TAMMY R	ATLANTA, GA	TO DISCUSS CONCERNS ON CURRENT IMMUNIZATION ISSUES WITH FORCUS ON IMPROVING VACCINATION LEVELS	\$2,101.00	Federal
CLARK, TAMMY R	SEATTLE, WA	CDC REQUIRED FOR ALL STATES TO REVIEW THE NEW IPOM & ASSIST IN VFC QUALITY ASSURANCE DOSE LEVEL	\$1,840.00	Federal
CLARK, TAMMY R	RICHMOND, CA	REQUIRED CDC TRAINING FOR UPDATES ON VFC POLICIES	\$1,888.00	Federal
COLEMAN, CYNTHIA W	MEMPHIS, TN	PROVIDE STRATEGIES TO ADDRESS BARRIERS TO BREASTFEEDING AMONG AFRICAN AMERICAN POPULATION	\$88.00	Federal
COLLIER, BILLIE F	TN/AL/GA/AR/LA	CONDUCT ROUTINE INSPECTIONS AND AUDITS OF AMBULANCES/TRAUMA CENTER	\$229.00	Other
COLLIER, BILLIE F	BETHESDA, MD	TO IMPROVE THE QUALITY OF PEDIATRIC EMERGENCY CARE IN MISSISSIPPI	\$1,606.00	Federal
COLLIER, BILLIE F	SAN DIEGO, CA	WILL PROVIDE ASSISTANCE IN THE AREAS OF IDENTIFICATION OF RESOURCES, PROGRAMS, GRANTS, MEASURES	\$1,618.00	Federal
COOPER, LAQUITA	MIAMI, FL	TO GAIN KNOWLEDGE IN AREAS DIRECTLY IMPACTING PATIENT CARE AND RESEARCH IN SICKLE CELL DISEASE	\$1,773.00	Federal
COOPER, MARGARET D	ATLANTA, GA	TO ENGAGE IN INTERACTIVE LEARNING SESSIONS AND BRIEFING ON NATIONAL PREPAREDNESS ISSUES	\$834.00	Federal
COWLEY, JANIS Y	OMAHA, NE	TRAINING ON BASIC CONCEPTS OF DISEASE INTERVENTION WITH AN EMPHASIS ON INTERVIEWING AND STD CASE MGMT	\$2,459.00	Federal
COX, LYNN T	BALTIMORE, MD	WILL PROVIDE STATE & REGIONAL OFFICE TRAINING COORDINATORS WITH INFORMATION NEEDED TO MANAGE TRAINING	\$967.00	Federal
CRAFT, CHRISTY LEIGH	ATLANTA, GA	BASIC COURSE IN EPIDEMIOLOGY FOR PUBLIC HEALTH PROFESSIONALS, HANDS ON COMPUTER TRAINING USING EPI-INFO 7	\$3,144.00	Federal
CRAIG, JAMES H III	PHILADELPHIA, PA	REQUIRED BY CDC FOR FUNDING OF PUBLIC HEALTH EMERGENCY PREPAREDNESS COOPERATIVE AGREEMENT	\$1,789.00	Fed/Other
CRAIG, JAMES H III	ATLANTA, GA	TO ENGAGE IN INTERACTIVE LEARNING SESSIONS AND BRIEFING ON NATIONAL PREPAREDNESS ISSUES	\$2,152.00	Federal
CRUMPTON, ELIZABETH Y	FT. LAUDERDALE, FL	EVALUATE AND LEARN NEW WAYS TO INCREASE WIC PARTICIPATION IN MS. SITE VISIT COLLIER & DADE COUNTY	\$951.00	Federal
CURRIER, MARY MARGARET	ATLANTA, GA	MEETING WITH ASTHO LEADER	\$673.00	General
CURRIER, MARY MARGARET	SCOTTSDALE, AZ	DISCUSS AND SHARE INFORMATION ABOUT HEALTH TRENDS & CHALLENGES THAT IMPACT THE FOCUS OF STATE HEALTH	\$59.00	General
DARNELL, TIMOTH R	ALEXANDRIA, VA	TRAINING TO LEARN ABOUT THE MAPP PROCESS AND HOW TO UTILIZE TI FOR COMMUNITY/STATE HEALTH ASSESSMENT	\$186.00	Federal
DAVIS, RONALD PRINCE	BIRMINGHAM, AL	TO KEEP ABREAST OF PUBLIC HEALTH ISSUES WITH OTHERSTATES, BRAINSTORMING & PROBLEM SOLVING	\$362.00	Federal
DENSON, LOUISA ETHELENE	NEW ORLEANS, LA	REQUIRED FOR ADMINSTRATORS TO OBTAIN UPDATE, GUIDELINE, BEST PRACTICES FOR FAMILY VIOLENCE PREVENTION	\$793.00	Federal
DENSON, LOUISA ETHELENE	CHICAGO, IL	REQUIRED TRAINING TO PROVIDE UPDATES FOR ADMINSTRATION ITEMS ON SEXUAL VIOLENCE PREVENTION	\$1,734.00	Federal
DENSON, LOUISA ETHELENE	ATLANTA, GA	REQUIRED MEETING FOR GRANT FUNDING TO DISCUSS COMPONENTS OF THE GRANTS	\$408.00	Federal
DICKENS, SANDY RENEE	BARTLETT, TN	INCREASE KNOWLEDGE ON COMPOUNDING STERILE PREPARATIONS USING A SEPTIC TECHNIQUE	\$562.00	General
DILLARD, MELANIE ANNE	LITTLE ROCK, AR	TO LEARN SKILLS & TO NETWORK WITH PEERS, HEALTH PROFESSIONALS, DISCOVERING THE TREASURES OF WIC	\$1,093.00	Federal
DILLON, LISA M	MONTERREY, CA	CORE RAPID RESPONSE TRAINING WILL PROVIDE UPDATES ON FOOD SAFETY	\$1,675.00	Federal
DILLON, LISA M	HAGERSTOWN, MD	REQUIRED DAIRY INSPECTOR TRAINING FOR MILK RATING OFFICER	\$1,654.00	Federal
DILLON, LISA M	BIRMINGHAM, AL	COURSE REQUIRED BY THE STATE FOR MILK RATING OFFICER & INCREASE SKILLS IN TESTING MILK	\$948.00	Federal
DOBBS, THOMAS E	PASADENA, CA	REQUIREMENT OF THE CSTE RESEARCH GRANT FOR PUBLIC HEALTH EPIDEMIOLOGISTS ACROSS THE COUNTRY	\$3,384.00	Federal
DOVE, CASSANDRA ANQUALA	CHARLOTTE, NC	CURRENT ISSUES REGARDING OBESITY AND HEALTHCARE POLICY, SOLUTIONS, PREVENTION	\$891.00	Federal
DOVE, CASSANDRA ANQUALA	ORLANDO, FL	WILL BE A PRESENTER AT THE CONFERENCE TO SHARE & RECEIVE INFORMATION FOR STROKE PREVENTION, CARE	\$464.00	Federal
DOVE, CASSANDRA ANQUALA	ATLANTA, GA	REVERSE SITE VISIT WITH MDHC TO DISCUSS STRATEGIES FOR EVALUATING CLINICAL INITIATIVES	\$1,729.00	Federal
DUCKSWORTH, GWENDOLYN D	WASHINGTON, DC	LEARN THE LATEST DEVELOPMENTS IN WIC EBT AND STEPS & PROCESSES NECESSARY TO PLAN AND IMPLEMENT WIC EBT	\$1,422.00	Federal
DUCKSWORTH, GWENDOLYN D	CHICAGO, IL	PROVIDES A MEAN OF NETWORKING WITH OTHERS STATE & SHARES WITH OUR STAFF INFORMATION ON CSFP PROGRAM	\$686.00	Federal
DUCKSWORTH, GWENDOLYN D	SAN FRANCISCO, CA	INFORMATION ON HOW TO EAT HEALTHY & INCORPORATE HEALTHY FRUITS & VEGETABLES IN THE WIC PROGRAMS	\$1,493.00	Federal
EDGIN, SETH COLLIN	SAN ANTONIO, TX	COURSE DESIGNED TO PROVIDE DETAILED TECHNICAL INFORMATION ON THE APPLICATION OF FSES/BC SURVEYING	\$712.00	Other
EDGIN, SETH COLLIN	DALLAS, TX	TRAINING COURSE FOR SURVEYORS WHO SURVEY HEALTH CARE FACILITIES USING DSES/HC	\$1,607.00	Other
EDGIN, SETH COLLIN	BALTIMORE, MD	CMS TRAINING ON CURRECNT FIRE PROTECTION HOT TOPICS	\$1,103.00	Federal
EDWARDS, APRIL H	MEMPHIS, TN	PROVIDE STRATEGIES TO ADDRESS BARRIERS TO BREASTFEEDING AMONG AFRICAN AMERICAN POPULATION	\$53.00	Federal
EICHER, DONALD ELLSWORTH III	WASHINGTON, DC	PROVIDE INFORMATION REGARDING CHANGING IN FEDERAL POLICIES AND PROGRAMS RELATED TO RURAL HEALTH	\$1,953.00	Other

# OUT OF STATE TRAVEL REPORT

Name	Place	Purpose	Cost	Source
EICHER, DONALD ELLSWORTH III	LOUISVILLE, KY	REQUIRED BY GRANT/PROVIDE STRATEGIES, MODELS AND TOOLS FOR RURAL HEALTH	\$1,032.00	Federal
EMERSON, MARSHA FORTNER	DALLAS, TX	COURSE IS REQUIRED FOR LONG TERM CARE SURVEYORS FOR BASIC INFORMATION & TRAINING LTC NURSING HOMES	\$881.00	Federal
EMPLAINCOURT, HEATHER F	BIRMINGHAM, AL	IMPROVE SKILLS & GET UPDATE IN NUTRITION STANDARDS OF INFANTS, CHILDREN & ADOLESCENTS, NETWORKING	\$940.00	Federal
FAGAN, ROBERT EMMETT JR	SAN DIEGO, CA	PROVIDES SESSIONS HELD BY LEADING HEALTH LAW PRACTITIONERS, IN-HOUSE COUNSEL RESPONSIBILITIES	\$978.00	Fed/Other
FAGAN, ROBERT EMMETT JR	ATLANTA, GA	EXAMINE PRACTICAL LEGAL APPROACHES TO ADDRESS PRIORITY PUBLIC HEALTH ISSUES	\$991.00	Federal
FAIR, FRANCES H	DALLAS, TX	COURSE IS REQUIRED FOR LONG TERM CARE SURVEYORS FOR BASIC INFORMATION & TRAINING LTC NURSING HOMES	\$947.00	Federal
FAIR, FRANCES H	TALLAHASSEE, FL	TRAINING COURSE FOR ALL HEALTH FACILITY SURVEYORS WHO INVESTIGATE COMPLAINTS IN HEALTH FACILITIES.	\$547.00	Federal
FAIR, FRANCES H	BALTIMORE, MD	REQUIRED CMS COURSE FOR LMS USING AND MANAGING TRAINING UPDATES & KEY TOPICS ON QUALITY ASSURANCE	\$1,491.00	Federal
FAIR, MAI	MEMPHIS, TN	PROVIDE STRATEGIES TO ADDRESS BARRIERS TO BREASTFEEDING AMONG AFRICAN AMERICAN POPULATION	\$92.00	Federal
FARRISH, DANIEL ASHLEY	BLOOMINGTON, MN	LEARN HOW TO MAXIMIZE DATA ACROSS ALL FIELDS OF EMERGENCY QUALITY DATA COLLECTION & REPORTING	\$1,891.00	Fed/Other
FARRISH, DANIEL ASHLEY	NEW ORLEANS, LA	REPRESENTING THE PROFESSIONAL INTERESTS OF ALL EMERGENCY MEDICAL TECHNICIANS SERVICES	\$1,169.00	Other
FARRISH, DANIEL ASHLEY	BOSIE, IDAHO	DESIGNED FOR EMS PROGRAM MANAGMENT, GRANT ADMINISTRATION NEEDS AT LOCAL, REGIONAL & STATEWIDE LEVELS	\$1,719.00	Other
FARRISH, DANIEL ASHLEY	WASHINGTON, DC	RESPONSIBLE FOR STATE LEVEL POLICY-MAKING EMS MANAGEMENT AND GRANT ADMINISTRATION	\$1,298.00	Other
FERRILL, WENDY R	BIRMINGHAM, AL	TRAINING WORKSHOP FOR PROFESSIONAL ENGINEERS AS REQUIRED TO KEEP CREDENTIALS FOR AGENCY ENGINEERS	\$666.00	Federal
FORTENBERRY, DEBORAH E	MOBILE, AL	TRAINING FOR ALL LABORATORY SURVEYORS, UPDATES OF CLIA, DRUG TESTING, CYTOGENETICS, MOLECULAR TESTING	\$885.00	Federal
FORTUNE, MELODY	WASHINGTON, DC	REQUIRED FOR GRANT AWARD/TRAINING IN POLICY, SYSTEM AND IMPROVING THE ROLE OF PUBLIC HEALTH IN CANCER PREV.	\$1,296.00	Federal
FORTUNE, MELODY	NASHVILLE, TN	STRENGTHEN CANCER & CHRONIC DISEASE PREVENTION EFFORTS AIMED AT AMERICAN INDIANS, INCREASING SCREENINGS	\$90.00	Federal
FOSTER, JACQUELINE	ATLANTA, GA	TRAINING WILL PROVIDE SKILLS NEEDED TO PROVIDE MSDH STAFF KNOWLEDGE & SKILLS TO CONDUCT ARTAS CARE	\$634.00	Federal
FOUNTAIN, MARY W	BETHESDA, MD	REQUIRED GRANTEEES MEETING WILL PROVIDE DIRECTIONS & UPDATES ON MINORITY HEALTH	\$971.00	Federal
FOX, ANTHONY EARL	ATLANTA, GA	TO ASSURE THE PROGRAMS ARE DEVELOPING AND IMPLEMENTING EFFECTIVE EVALUATION PLANS AND REPORTS	\$672.00	Federal
FOX, ANTHONY EARL	WASHINGTON, DC	REQUIRED FOR GRANT AWARD/TRAINING IN POLICY, SYSTEM AND IMPROVING THE ROLE OF PUBLIC HEALTH IN CANCER PREV.	\$1,376.00	Federal
FRIDAY, ISSAC TYRONE	WASHINGTON, DC	LEARN THE LATEST DEVELOPMENTS IN WIC EBT AND STEPS & PROCESSES NECESSARY TO PLAN AND IMPLEMENT WIC EBT	\$1,434.00	Federal
FRIDAY, VERONICA	TN/AL/GA/AR/LA	CONDUCT ROUTINE INSPECTIONS AND AUDITS OF AMBULANCES/TRAUMA CENTER	\$214.00	Other
FUNCHESS, TANYA, TOMEKIO	SAN FRANCISCO, CA	PROVIDE CURRENT INFO ON PUBLIC HEALTH MATERNAL CHILD HEALTH RESEARCH, HEART DISEASE & STROKE PREV.	\$1,880.00	Other
FUNCHESS, TANYA TOMEKIO	KANSAS CITY, MO	ALLOW STAFF TO LEARN THE LATEST SCIENCE & EVIDENCE IN TOBACCO CONTROL	\$1,951.00	Other
FUNCHESS, TANYA TOMEKIO	OAKLAND, CA	INFO ON PROPOSED POLICIES, PROJECTS AND PLANS, BRINGS TOGETHER A DIVERSE GROUP OF HEALTH PARTICIPANTS	\$2,020.00	Other
GAINEY, ANGELA J	ATLANTA, GA	TO GAIN INFORMATION FORM NPHII TO STRENGTHEN PUBLIC HEALTH SERVICE EXPANDING	\$1,005.00	Federal
GAINEY, ANGELA J	MILWAUKEE, WI	IMPROVE COMMUNITY PRACTICE AND BROADEN MY UNDERSTANDING OF PERFORMANCE IMPROVEMENT	\$463.00	Federal
GAMBLE, ABIGAIL	CHARLOTTE, NC	CURRENT ISSUES REGARDING OBESITY AND HEALTHCARE POLICY, SOLUTIONS, PREVENTION TO THE STRATEGIES	\$1,134.00	Federal
GAMBLE, ABIGAIL	ATLANTA, GA	REVERSE SITE VISIT WITH MDHC TO DISCUSS STRATEGIES FOR EVALUATING CLINICAL INITIATIVES	\$1,884.00	Federal
GAMBLE, ABIGAIL	OAKLAND, CA	INFO ON PROPOSED POLICIES, PROJECTS AND PLANS, BRINGS TOGETHER A DIVERSE GROUP OF HEALTH PARTICIPANTS	\$1,751.00	Federal
GARNER, ASHLEY MARIE	KANSAS CITY, MO	ALLOW STAFF TO LEARN THE LATEST SCIENCE & EVIDENCE IN TOBACCO CONTROL	\$1,934.00	Federal
GERVIN, MARY LAWRENCE	NEW ORLEANS, LA	LOUISIANA-MS HOSPICE & PALLIATIVE CARE LEADERSHIP AND MANAGEMENT	\$188.00	Federal
GERVIN, MARY LAWRENCE	ATLANTA, GA	REQUIRED CMS TRAINING UPDATES THE STATE DIRECTORS ON HOT TOPICS CMS UPDATES & EFFECTIVENESS	\$445.00	Federal
GERVIN, MARY LAWRENCE	TALLAHASSEE, FL	REQUIRED TO IDENTIFY/REVIEW HOT TOPICS, CMS UPDATES OTHER ITEMS SUBMITTED BY THE SA DIRECTORS	\$406.00	Federal
GERVIN, MARY LAWRENCE	ATLANTA, GA	CMS STATE SUREVY AGENCY DIRECTOR MEETING & FALL COLLABORATIVE REQUIRED MEETING	\$826.00	Federal
GERVIN, MARY LAWRENCE	ANNAPOLIS, MD	CMS UPDATE, QUALITY ASSURANCE TO IDENTIFY /REVIEW TOPICS FOR SA DIRECTORS	\$1,293.00	Federal
GONG, HARR D. JR	NEW ORLEANS, LA	DRINKING WATER SRF DIRECTOR REQUIRED MEETING FOR FEDERAL DWSRF PROGRAM FOR FUNDING	\$633.00	Other
GONG, HARR D. JR	MOBILE, AL	TO SHARE INFORMATION AND DEVELOP TECHNOLOGY FOR SAFE DRINKING WATER	\$910.00	Other
GRAHAM, JUANITA CAROL	RALEIGH, NC	TRAINING SPECIFIC TO PUBLIC HEALTH NURSING THROUGH THE USE OF INNOVATIVE, EFFECTIVE METHODOLOGIES	\$773.00	Federal
GRAHAM, JUANITA CAROL	SAN FRANCISCO, CA	PROVIDE CURRENT INFO ON PUBLIC HEALTH MATERNAL CHILD HEALTH RESEARCH, HEART DISEASE & STROKE PREV.	\$2,671.00	Federal
GRAHAM, JUANITA CAROL	WASHINGTON, DC	WILL PROVIDE STRATEGIC INSIGHT TO IMPROVING MCH OUTCOMES BY SHARING EFFECTIVE & BEST PRACTICES	\$610.00	Federal
GRAHAM, JUANITA CAROL	MOBILE, AL	OPPORTUNITY TO IMPLEMENT A FIRM AND PAMR RECORD ABSTRACTION AT USA- MOBILE	\$433.00	Federal
GRAHAM, JUANITA CAROL	NASHVILLE, TN	EPI TRAINING COURSE FOR SKILLS IN USING STATISTICAL & EPIDEMIOLOGIC METHODS IN MCH AND RELATED FIELDS	\$775.00	Federal
GRAHAM, JUANITA CAROL	JACKSON, TN	WILL PRESENT A TOOLKIT PILOTTED FOR CDC ASSESSING WOMEN'S POST DISASTER ACCESS TO REPRODUCTIVE HEALTH	\$415.00	Federal
GREEN, CANDICE E	SILVER SPRING, MD	DESIGNED TO SUPPORT COMMUNITY BASED EFFORTS TO ACCESS, ANALYZE AND USE EXISTING DATA	\$1,321.00	Federal
GRICE, JOSEPH ALAN	ATLANTA, GA	REQUIRED CDC MEETING FOR DATA COLLECTION, CYCLE ACTIVITIES, AND IMPLEMENTATION OF 2013 DATA	\$1,121.00	Fed/Other
GRICE, JOSEPH ALAN	ATLANTA, GA	REQUIRED GRANTEEES MEETING, DATA MANAGER TRAININGS AND PRINCIPAL INVESTIGATOR TRAINING	\$1,942.00	Federal
GUNNER, CJUAN A	MILWAUKEE, WI	IMPROVE COMMUNITY PRACTICE AND BROADEN MY UNDERSTANDING OF PERFORMANCE IMPROVEMENT	\$885.00	Federal
GUNNER, CJUAN A	ATLANTA, GA	TO GAIN INFORMATION FROM THE LEADERS & OFFICERS ON HOW NPHII FIT INTO PUBLIC HEALTH DISCUSSION	\$1,476.00	Federal
GUTHRIE-LEWIS, ELVIE P	WASHINGTON, DC	LEARN THE LATEST DEVELOPMENTS IN WIC EBT AND STEPS & PROCESSES NECESSARY TO PLAN AND IMPLEMENT WIC EBT	\$1,384.00	Federal
GUTHRIE-LEWIS, ELVIE P	CHICAGO, IL	PROVIDES A MEAN OF NETWORKING WITH OTHER STATES & SHARES WITH OUR STAFF INFORMATION ON CSFP PROGRAM	\$502.00	Federal
GUTHRIE-LEWIS, ELVIE P	ALBUQUERQUE, NM	IMPLEMENTATION OF THE EBT SYSTEM, LEARN ABOUT THE LATEST DEVELOPMENTS IN WIC EBT	\$1,217.00	Federal
GUTHRIE-LEWIS, ELVIE P	FT. LAUDERDALE, FL	EVALUATE AND LEARN NEW WAYS TO INCREASE WIC PARTICIPATION IN MS. SITE VISIT COLLIER & DADE COUNTY	\$2,393.00	Federal
GUTHRIE-LEWIS, ELVIE P	ATLANTA, GA	MANDATORY MEETING FOR NEW WIC PROGRAM DIRECTORS MEETING ON ALL FUNCTIONAL AREAS	\$1,391.00	Federal
GUTHRIE-LEWIS, ELVIE P	SAN FRANCISCO, CA	INFORMATION ON HOW TO EAT HEALTHY & INCORPORATE HEALTHY FRUITS & VEGETABLES IN THE WIC PROGRAMS	\$1,609.00	Federal
GUTHRIE-LEWIS, ELVIE P	LOS ANGELES, CA	CONFERENCE COVERS CURRENT & EMERGING NUTRITION & BREASTFEEDING SCIENCE, RESEARCH, POLICY AND PRACTICES	\$1,658.00	Federal
GUTHRIE-LEWIS, ELVIE P	LITTLE ROCK, AR	TO LEARN SKILLS & TO NETWORK WITH PEERS, HEALTH PROFESSIONALS, DISCOVERING THE TREASURES OF WIC	\$1,187.00	Federal



# OUT OF STATE TRAVEL REPORT

Name	Place	Purpose	Cost	Source
GUTHRIE-LEWIS, ELVIE P	WASHINGTON, DC	TO DISCUSS FEDERAL INITIATIVES AFFECTING THE HEALTH & NUTRITIONAL WELL-BEING OF WIC MOTHERS & CHILDREN	\$2,002.00	Federal
GUTHRIE-LEWIS, ELVIE P	BIRMINGHAM, AL	TO KEEP ABREAST OF PUBLIC HEALTH ISSUES WITH OTHER STATES, BRAINSTORMING & PROBLEM SOLVING	\$186.00	Federal
GUYNES, DENNIS H	SAYREVILLE, NJ	TO ASSIST THE STATE OF NEW JERSEY IN EMERGENCY INCIDENT FOR HURRICANE SANDY	\$560.00	Federal
HAMPTON, ASHLEY P	ALBUQUERQUE, NM	IMPLEMENTATION OF THE EBT SYSTEM, LEARN ABOUT THE LATEST DEVELOPMENTS IN WIC EBT	\$1,203.00	Federal
HAND, SHERYL OWEN	ORLANDO, FL	REQUIREMENT OF THE FDA GRANT MEET WITH FLORIDA RAPID RESPONSE TEAM TO LEARN BEST PRACTICES & CAPACITIES	\$803.00	Federal
HARGROVE, DIANE W	FT. LAUDERDALE, FL	EVALUATE AND LEARN NEW WAYS TO INCREASE WIC PARTICIPATION IN MS. SITE VISIT COLLIER & DADE COUNTY	\$1,945.00	Federal
HARGROVE, DIANE W	BIRMINGHAM, AL	TO KEEP ABREAST OF PUBLIC HEALTH ISSUES WITH OTHER STATES, BRAINSTORMING & PROBLEM SOLVING	\$313.00	General
HARPER, LYNNETTE S	NATIONAL HARBOR, MD	LEARN MORE ON THE VARIOUS COMPONENTS OF COMPLIANCE, ETHICS AND CORPORATE RESPONSIBILITY PLANS & PROGRAMS	\$2,373.00	Federal
HARPER, LYNNETTE S	MONTGOMERY, AL	EXCHANGE INFORMATION ON THE NEW HI-TECH LAWS AND OTHER RESOURCES FOUND	\$176.00	Federal
HARPER, LYNNETTE S	BIRMINGHAM, AL	TO KEEP ABREAST OF PUBLIC HEALTH ISSUES WITH OTHER STATES, BRAINSTORMING & PROBLEM SOLVING	\$325.00	Federal
HARRION, GENE A JR	TALLAHASSEE, FL	REQUIRED TO IDENTIFY/REVIEW HOT TOPICS, CMS UPDATES, OTHER ITEMS SUBMITTED BY THE SA DIRECTORS	\$384.00	Federal
HARRIS, ROZELIA	MEMPHIS, TN	TRAINING AND WORKFORCE DEVELOPMENT OF CONRAD STATE 301 J-1 WAVIER PROGRAM TO INCREASE ACCESS TO CARE	\$493.00	Federal
HARRIS, ROZELIA	DESTIN, FL	INFORMATION ABOUT DENTAL FIELD, DENTAL PROGRAMS AND OFFICE OPERATION THAT WILL BE BENEFICIAL	\$1,969.00	Federal
HARRIS, ROZELIA	ORLANDO, FL	EHANCE OFFICE ABILITY TO SUPPORT THE DELIVERY OF PRIMARY CARE SERVICES & DISTRIBUTION	\$2,530.00	Federal
HARRIS, ROZELIA	LOUISVILLE, KY	REQUIRED BY GRANT/PROVIDE STRATEGIES, MODELS AND TOOLS FOR RURAL HEALTH	\$1,333.00	Federal
HARRIS, ROZELIA	MADISON, WI	REQUIRED FOR OFFICE OF RURAL HEALTH GRANT FUNDING, PROVIDE INFORMATION ON PERFORMANCE MEASURES, ACTIVITIES	\$532.00	Federal
HARRIS, ROZELIA	BRANSON, MO	REQUIREMENT OF THE RURAL HEALTH GRANT AS RELATED TO THE FINANCIAL SESSIONS TO CRITICAL HOSPITALS	\$1,017.00	Federal
HARRIS, ROZELIA	SEATTLE, WA	PROVIDE INFORMATION TO ASSIST RURAL FACILITIES IN THE AREA OF QUALITY IMPROVEMENT	\$3,286.00	Federal
HART, WALTER R	SAN FRANCISCO, CA	PROVIDE CURRENT INFO ON PUBLIC HEALTH MATERNAL CHILD HEALTH RESEARCH, HEART DISEASE & STROKE PREV.	\$1,634.00	Other
HART, WALTER R	KANSAS CITY, MO	ALLOW STAFF TO LEARN THE LATEST SCIENCE & EVIDENCE IN TOBACCO CONTROL	\$1,924.00	Other
HART, WALTER R	ORLANDO, FL	PRESENT ABSTRACT IN COLLABORATION WITH CENTER FOR MS HEALTH POLICY AND SOCIAL SCIENCE RESEARCH	\$1,459.00	Federal
HARTLEY, REMONA CHERIE	DALLAS, TX	COURSE IS REQUIRED FOR LONG TERM CARE SURVEYORS FOR BASIC INFORMATION & TRAINING LTC NURSING HOMES	\$1,096.00	Federal
HAUGHTON, LINDA L	OKLAHOMA CITY, OK	REQUIRED PROFESSIONAL MEETING FOR THE CENSUS OF FATAL OCCUPATIONAL INJURIES SURVEY FOR MS	\$1,099.00	Federal
HAWKINS, JACKIE S	CHARLOTTE, NC	CURRENT ISSUES REGARDING OBESITY AND HEALTHCARE POLICY, SOLUTION, PREVENTION TO THE STRATEGIES	\$1,150.00	Federal
HAWKINS, JACKIE S	LITTLE ROCK, AR	TO MEET THE GOAL OF STATE RURAL HEALTH RELATED TO WORKFORCE DEVELOPMENT	\$785.00	Federal
HAYDEL, CARL LAWRENCE JR	SCOTTSDALE, AZ	UPDATE ON CURRENT RESEARCH ANALYSIS TECHNIQUES IN GIS	\$1,049.00	Other
HAYWARD, MARGARET SUE	BIRMINGHAM, AL	REQUIRED MEETING THAT FOCUSES ON MAINTAINING QUALITY & SAFETY FOR LONG TERM CARE	\$555.00	Federal
HAYWARD, MARGARET SUE	ORLANDO, FL	WILL PROVIDE SURVEYORS UPDATE ABOUT NEW DIALYSIS TECHNOLOGIES STANDARD, DATE REGULATORY OVERSIGHT	\$1,500.00	Federal
HAYWARD, MARGARET SUE	SAN ANTONIO, TX	REQUIRED CMS TRAINING UPDATES AND QUALITY ASSURANCE MEASURES	\$1,348.00	Federal
HEFLIN, PATRICIA D MARTIN	BIRMINGHAM, AL	IMPROVE SKILLS & UPDATE IN NUTRITION STANDARDS OF INFANTS, CHILDREN & ADOLESCENTS, NETWORKING	\$865.00	Other
HENRY, KAY G	CARY, NC	WILL PROVIDE OPPORTUNITY TO LEARN EVIDENCE-BASED STRATEGIES TO MEET PULBIC HEALTH PRIORITIES	\$1,261.00	Federal
HERRINGTON, KAREN	ALEXANDRIA, VA	TRAINING TO LEARN ABOUT THE MAPP PROCESS AND HOW TO UTILIZE IT FOR COMMUNITY/STATE HEALTH ASSESSMENT	\$175.00	Federal
HESS, STACI RENEE	ATLANTA, GA	TRAINING FOR NURSE PRACTITIONERS TO CONDUCT COLOSCOPY CLINICS FOR CERTIFICATION	\$1,456.00	General
HESTER, JOHN WILLIAM JR	KANSAS CITY, MO	ALLOW STAFF TO LEARN THE LATEST SCIENCE & EVIDENCE IN TOBACCO CONTROL	\$1,742.00	Federal
HEUP, VICKIE IGEHART	MEMPHIS, TN	PROVIDE STRATEGIES TO ADDRESS BARRIERS TO BREASTFEEDING AMONG AFRICAN AMERICAN POPULATION	\$10.00	Federal
HILL, JEREMY G	WASHINGTON, DC	WILL FOCUS ON TOPICS SUCH AS AUTOMATED ALERTING, SUPPORTING MU STAGE 2 PUBLIC HEALTH REQUIREMENTS	\$934.00	Federal
HOGGATT, PHILIS H	ATLANTA, GA	WILL PROVIDE INFORMATION FROM OTHER STATES ON NEWBORN SCREENING ISSUES & INFORMATION	\$2,539.00	Other
HOLCOMBE, JAMES M	ATLANTA, GA	EDUCATIONAL UPDATES ON INNOVATION TO REDUCE FUTURE TB CASES, TB DIAGNOSIS	\$1,081.00	Federal
HOLDINESS, ROY DALE	NEW ORLEANS, LA	REPRESENTING THE PROFESSIONAL INTERESTS OF ALL EMERGENCY MEDICAL TECHNICIANS SERVICES	\$1,199.00	Other
HOLDINESS, ROY DALE	BOSIE, IDAHO	DESIGNED FOR EMS PROGRAM MANAGMENT, GRANT ADMINISTRATION NEEDS AT LOCAL, REGIONAL & STATEWIDE LEVELS	\$1,787.00	Other
HOPKINS, JENNIFER A	WASHINGTON, DC	WILL PROVIDE STRATEGIC INSIGHT TO IMPROVING MCH OUTCOMES BY SHARING EFFECTIVE & BEST PRACTICES	\$1,815.00	Federal
HOPKINS, JENNIFER A	NEW ORLEANS, LA	CONFERENCE WILL ENHANCE/IMPROVE CLINICAL PROCEDURES SUCH AS UROGENITAL EXAMINATION	\$462.00	Federal
HUDSON, BRIEAH DOUGALE	ATLANTA, GA	CONFERENCE WILL ENHANCE KNOWLEDGE ON BEST PRACTICES AND PROCEDURES IN BREASTFEEDING	\$1,193.00	Federal
HUDSON, BRIEAH DOUGALE	MEMPHIS, TN	PROVIDE STRATEGIES TO ADDRESS BARRIERS TO BREASTFEEDING AMONG AFRICAN AMERICAN POPULATION	\$537.00	Federal
HUGHES, BRENDA G	SAN ANTONIO, TX	WILL PROVIDE LEARNING ON HEALTH CARE REFORM, LIFE COURSE & ADOLESCENTS SESSION ADDRESSING MAH ISSUES	\$901.00	Federal
IRWIN, THERESA ANN	MOBILE, AL	TRAINING FOR ALL LABORATORY SURVEYORS, UPDATES OF CLIA, DRUG TESTING, CYTOGENETICS, MOLECULAR TESTING	\$899.00	Federal
JACKSON, ANN H	ATLANTA, GA	FOCUS ON DISEASE ERADICATION EFFORTS; HOW TO APPLY TO TB ELIMINATION, HOW TO PRESENT TB DATA	\$1,797.00	Federal
JERNIGAN, CURTIS D	SAYREVILLE, NJ	TO ASSIST THE STATE OF NEW JERSEY IN EMERGENCY INCIDENT FOR HURRICANE SANDY	\$709.00	Federal
JOHNSON, KENDRA LAKITA	ATLANTA, GA	MEETING WILL DISCUSS CSBS DATA COLLECTION & DATA ANALYSIS	\$915.00	Federal
JOHNSON, KENDRA LAKITA	ATLANTA, GA	PROVIDE STAFF WITH DIRECTIVE REGARDING FISCAL, SCIENTIFIC & PROGRAMMATIC REQUIREMENTS BY CDC GRANT	\$2,101.00	Federal
JOHNSON, KINA L	WASHINGTON, DC	WILL IMPLEMENT EFFECTIVE SEX EDUCATION PROGRAMS & ENSURE ONGOING SUPPORT FOR COMPREHENSIVE EDUCATION	\$221.00	Federal
JOHNSON, KINA L	BALTIMORE, MD	TO STRENGTHEN THE EFFORTS IN REDUCING TEEN PREGNANCY THROUGH EVIDENCE-BASED INNOVATIVE PROGRAMMING	\$795.00	Federal
JOHNSON, KINA L	WASHINGTON, DC	GRANT TO WORK WITH SCHOOL DISTRICT & COMMUNITY BASED ORGANIZATION ADDRESSING TEEN PREGNANCY & STDS	\$801.00	Federal
JOHNSON, KINA L	ST LOUIS, MO	HELP SCHOOL DISTRICTS AND COMMUNITY BASED ORGANIZATIONS ADDRESS TEEN PREGNANCY & STDS	\$403.00	Federal
JOHNSON, RICHARD A	CHARLOTTE, NC	WILL PROVIDE EDUCATION, KNOWLEDGE & TOOLS TO IMPROVE THE HEALTH OUTCOMES & ELMINATES HEALTH DISPARITIES	\$1,619.00	Fed/Other
JOHNSON, RICHARD A	ATLANTA, GA	TO PROVIDE INPUT ON DECISIONS REGARDING THE FUTURE DIRECTION OF THE BRFSS PROGRAM	\$1,821.00	Federal
JOHNSON, RICHARD A	GREENVILLE, SC	ALLOW STATES TO DISCUSS VITAL RECORDS ISSUES, FRAUD, ELECTRONIC DEATH SYSTEM	\$910.00	Other
JOHNSON, RICHARD A	PHOENIX, AZ	TO ENHANCE MY KNOWLEDGE OF CHANGES IN STANDARDS FOR VITAL RECORDS & LEARN STRATEGIES	\$1,244.00	Other

# OUT OF STATE TRAVEL REPORT

Name	Place	Purpose	Cost	Source
JOHNSON, TIFFANY ONIECE	SAN FRANCISCO, CA	STRATEGIES TO INCREASE POLICY CHANGE, ASSIST WITH FUNCTION IN PROVIDING COMMUNITY COALITION	\$1,527.00	Federal
JOHNSON, TIFFANY ONIECE	NASHVILLE, TN	WILL PROVIDE TRAINING TO IMPROVE SKILL IN IMPLEMENTING EVIDENCE BASED STRATEGIES TO HELP COMMUNITIES	\$1,699.00	Federal
JOHNSON, TIFFANY ONIECE	KANSAS CITY, MO	ALLOW STAFF TO LEARN THE LATEST SCIENCE & EVIDENCE IN TOBACCO CONTROL	\$1,537.00	Federal
JOHNSON, TIFFANY ONIECE	BIRMINGHAM, AL	TO KEEP ABREAST OF PUBLIC HEALTH ISSUES WITH OTHER STATES, BRAINSTORMING & PROBLEM SOLVING	\$482.00	Federal
JOHNSON, TIFFANY ONIECE	ATLANTA, GA	TO DEVELOP COMMUNITY HEALTH LEADERS IN CHANGING HEALTH BEHAVIORS, IMPROVING ENVIRONMENTAL HEALTH	\$203.00	Federal
JOHNSON, XAVIER KATRICE	SAN FRANCISCO, CA	PROVIDE CURRENT INFO ON PUBLIC HEALTH MATERNAL CHILD HEALTH RESEARCH, HEART DISEASE & STROKE PREV.	\$2,311.00	Federal
JONES, JIMEKIA KENNITA	ATLANTA, GA	TRAINING TO COMPLY WITH CDC REQUIREMENTS FOR SEPND PLAN & CHARGING VACCINES	\$1,596.00	Federal
JONES, MICHAEL RANARD	TACOMA, WA	WILL PROVIDE ENRICHMENT OPPORTUNITIES & PROMOTE RECRUITMENT & RETENTION EMPLOYMENT	\$1,339.00	Federal
JONES, MICHAEL RANARD	KANSAS CITY, MO	WILL PROVIDE STAFF OPPORTUNITIES FOR RECURIUTMENT BY THE STATE FOR PRIMARY CARE PROVIDERS	\$1,313.00	Federal
JONES, MICHAEL RANARD	HUNTSVILLE, AL	RECEIVE CURRENT INFORMATION ON CURRENT TRENDS AND BEST PRACTICES IN ORAL HEALTH PROGRAMS	\$1,503.00	Federal
JONES, MICHAEL RANARD	GRAPEVINE, TX	HEALTHCARE PROFESSIONAL WORKSHOP TRAINING AND RECRUITMENT ACTIVITIES TO PROVIDE ASSISTANCE	\$1,376.00	Federal
JONES, ROSEMARY J	NEW ORLEANS, LA	TO ENGAGE IN IMMUNIZATION COMMUNITY CHALLENGES OF IMPLEMENTING 2 D BAR CODE RELATED TO VACCINE	\$936.00	General
JONES, ROSEMARY J	ATLANTA, GA	TO DISCUSS CONCERNS ON CURRENT IMMUNIZATION ISSUES WITH FOCUS ON IMPROVING VACCINATION	\$2,028.00	Federal
JONES, ROSEMARY J	ATLANTA, GA	TRAINING TO COMPLY WITH CDC REQUIREMENTS FOR SPEND PLAN & CHARGING VACCINES	\$1,600.00	Federal
JONES, ROSEMARY J	RICHMOND, CA	REQUIRED CDC TRAINING FOR UPDATES ON VFC POLICIES	\$1,537.00	Federal
JONES, SHERELDA DARLENE	WASHINGTON, DC	TO DISCUSS GENERAL KNOWLEDGE ON ORAL HEALTH ISSUES AND NETWORK WITH DIVERSE RANGES OF PARTICIPANTS	\$423.00	Other
JONES, SHERELDA DARLENE	HUNTSVILLE, AL	POSTER PRESENTATION AT THE CONFERENCE FOR PEER REVIEW/TRAINING WILL FOCUS ON RESEARCH, EDUCATION	\$677.00	Other
JUSTICE, JOHN DANIEL	WASHINGTON, DC	WILL PROVIDE STRATEGIC INSIGHT TO IMPROVING MCH OUTCOMES BY SHARING EFFECTIVE & BEST PRACTICES	\$1,236.00	Federal
JUSTICE, JOHN DANIEL	ATLANTA, GA	REQUIRED MEETING FOR GRANT FUNDING TO DISCUSS COMPONENTS OF THE GRANTS	\$421.00	Federal
KAVANAUGH, LAWANDA A	NEW ORLEANS, LA	LOUISIANA-MS HOSPICE & PALLIATIVE CARE LEADERSHIP AND MANAGEMENT	\$180.00	Federal
KAVANAUGH, LAWANDA A	SAN ANTONIO, TX	REQUIRED CMS TRAINING UPDATES AND QUALITY ASSURANCE MEASURES	\$1,360.00	Federal
KEE, BRENDA	GREENVILLE, SC	ALLOW STATES TO DISCUSS VITAL RECORDS ISSUES, FRAUD, ELECTRONIC DEATH SYSTEM	\$874.00	Other
KENDRICK, PAMELA	MINNEAPOLIS, MN	LEARN ABOUT STATE STRATEGIES FOR MEASURING & IMPROVING CHILD AND FAMILY SPECIAL NEEDS OUTCOMES	\$1,887.00	Federal
KENDRICK, PAMELA	WASHINGTON, DC	TRAINING DESIGNED SPECIFICALLY FOR STATE ICC CHAIRS, ASSIST IN IMPLEMENTATION OF EARLY INTERVENTION	\$1,731.00	Federal
KENDRICK, PAMELA	SAN ANTONIO, TX	TO GAIN INFORMATION ON SYSTEMS TO IMPROVE REPORTING OF IDEA AND OUTCOMES FOR CHILDREN & YOUTH	\$1,543.00	Federal
KENDRICK, TRACI GILL	TALLAHASSEE, FL	TRAINING COURSE FOR ALL HEALTH FACILITY SURVEYORS WHO INVESTIGATE COMPLAINTS IN HEALTH FACILITIES	\$549.00	Federal
KENT, DEBRA LYNN	ATLANTA, GA	TRAINING FOR LEVEL 2 METHOD, BLOOD METALS USING THE INDUCTIVELY COUPLED PLASMA MASS SPECTROMETRY	\$1,848.00	Federal
KENDRICK, PAMELA	ATLANTA, GA	TRAINING TO PROVIDE LRN-C CAPABILITY TO THREATS SUCH AS CHEMICAL WARFARE AGENTS	\$1,201.00	Federal
KENDRICK, PAMELA	ATLANTA, GA	COURSE ON LEVEL II CHEMICAL TERRORISM METHODOLOGIES PROVIDING COMPREHENSIVE UNDERSTANDING	\$1,808.00	Federal
KITTLE, THERESA	SCOTTSDALE, AZ	WILL PROVIDE NETWORKING WITH PUBLIC HEALTH EPIDMIOLOGISTS REGARDING THE LATEST DISEASE SURVEILLANCE	\$775.00	Fed/Other
KNOTT, JEROME	BETHESDA, MD	CONFERENCE WILL PROVIDE EDUCATION IN CAPACITY OF STATE FLEX PROGRAM ACCESS TO QUALITY HEALTHCARE	\$899.00	Federal
KNOTT, JEROME	LITTLE ROCK, AR	MEETING WILL STRENGTHEN LEADERSHIP AND CAPACITY, PROVIDE A FORUM FOR EXCHANGE OF RURAL HEALTH INFO	\$829.00	Federal
KNOTT, JEROME	KANSAS CITY, MO	PRACTICES, POLICIES & INFORMATION AND PROVIDE INSIGHTS OF QUALITY AND PATIENTS SAFETY ISSUES	\$1,497.00	Federal
KOIVA, ASHLEY W	BIRMINGHAM, AL	TRAINING WORKSHOP FOR PROFESSIONAL ENGINEERS AS REQUIRED TO KEEP CREDENTIALS FOR AGENCY ENGINEERS	\$442.00	Other
KURMANA, SAI	MINNEAPOLIS, MN	MEETING WILL FOCUS ON HELPING TO LEARN OR REFINE SKILLS RELATED TO EVALUATION METHODOLOGIES	\$458.00	Fed/Other
LAK, DEBORAH A	NEW ORLEANS, LA	REQUIRED FOR ADMINISTRATORS TO OBTAIN UPDATES, GUIDELINES, BEST PRACTICES FOR FAMILY VIOLENCE PREVENTION	\$469.00	Federal
LAKE, DEBORAH A	WASHINGTON, DC	WILL ASSIST IN TRAINING AND STRATEGIES THAT WILL BE UTILIZED IN THE DEVELOPMENT OF HOME VISITATION PROGRAM	\$971.00	Federal
LANE, LESLIE ALANE	LOS ANGELES, CA	CONFERENCE WILL COVER CURRENT & EMERGING NUTRITION & BREASTFEEDING SCIENCE, RESEARCH, POLICY AND PRACTICES	\$1,373.00	Federal
LEE, DEARBREYA D	GLENDALE, AZ	EFFECTIVE PRACTICES AND COMPONENTS OF COMPREHENSIVE EHDI PROGRAMS	\$1,515.00	Federal
LEWERS, DEBRA	MEMPHIS, TN	TRAINING WILL ENHANCE KNOWLEDGE IN DIASTER PLANNING, BUSINESS AND EMERGENCY MANAGEMENT	\$37.00	Federal
LEWIS, ALTHEA	ATLANTA, GA	TRAINING WILL PROVIDE SKILLS NEEDED TO PROVIDE MSDH STAFF KNOWLEDGE & SKILLS TO CONDUCT ARTAS CARE	\$752.00	Federal
LEWIS, CHRISTIE	ATLANTA, GA	PROVIDE STAFF WITH DIRECTIVE REGARDING FISCAL, SCIENTIFIC & PROGRAMMATIC REQUIREMENTS BY CDC GRANT	\$1,947.00	Federal
LEWIS, PEGGY B	ST. LOUIS, MO	TRAINING COURSE FOR NEW SURVEYORS CORE TOPICS ON HOW TO CORRECTLY APPLY AND INTERPRET FED REGULATIONS	\$1,741.00	Federal
LEWIS-SMITH, JEANETTE V	TALLAHASSEE, FL	TRAINING COURSE FOR ALL HEALTH FACILITY SURVEYORS WHO INVESTIGATE COMPLAINTS IN HEALTH FACILITIES	\$550.00	Federal
LIU, XIAOJIAN	GLENDALE, AZ	EFFECTIVE PRACTICES AND COMPONENTS OF COMPREHENSIVE EHDI PROGRAMS	\$1,640.00	Federal
LOFTON, SHEILA W	OMAHA, NE	TRAINING ON BASIC CONCEPTS OF DISEASE INTERVENTION WITH AN EMPHASIS ON INTERVIEWING AND STD CASE MGMT	\$2,517.00	Federal
LOTT, BAYARD L	NEW ORLEANS, LA	TO NETWORK WITH OTHER DEPTS OF PUBLIC HEALTH AND PUBLIC HEALTH UNIVERSITIES	\$390.00	Federal
LOTT, LATONYAA	SAN FRANCISCO, CA	PROVIDE CURRENT INFO ON PUBLIC HEALTH MATERNAL CHILD HEALTH RESEARCH, HEART DISEASE & STROKE PREV.	\$2,293.00	Federal
LOTT, LATONYAA	NEW ORLEANS, LA	POSTER PRESENTATION AT THE CONFERENCE OF PRACTICES USED TO SHAPE THE ASSESSMENT, TREATMENT & EVALUATION	\$82.00	Federal
LOTT, LATONYAA	ATLANTA, GA	PROVIDES TRAINING TO COMPREHNSIVE APPROACH TO EVALUATION, CASE STUDY METHODS FOR EVALUATORS, SYSTEM	\$1,454.00	Federal
LUKE, JOHN T	TAMPA, FL	REQUIRED MEETING FOR FDA RAPID RESPONSE TEAM DEVELOPMENT GRANT AWARD TO FOOD PROTECTION	\$833.00	Federal
LUKE, JOHN T	ORLANDO, FL	REQUIREMENT OF THE FDA GRANT MEET WITH FLORIDA RAPID RESPONSE TEAM TO LEARN BEST PRACTICES & CAPACITIES	\$691.00	Federal
LUTHER, SANDRA K	LITTLE ROCK, AR	TO LEARN SKILLS & TO NETWORK WITH PEERS, HEALTH PROFESSIONALS, DISCOVERING THE TREASURES OF WIC	\$1,018.00	Other
MABERRY, RANESSA O	ATLANTA, GA	REQUIRED CMS TRAINING UPDATES THE STATE DIRECTORS ON HOT TOPICS CMS UPDATES & EFFECTIVENESS	\$486.00	Federal
MAGEE CHELSEY R.	ATLANTA, GA	TRAINING TO PROVIDE LRN-C CAPABILITY TO THREATS SUCH AS CHEMICAL WARFARE AGENTS	\$1,290.00	Federal
MAGEE, PATRICIA COLLEEN	BIRMINGHAM, AL	REQUIRED MEETING THAT FOCUSES ON MAINTAINING QUALITY & SAFETY FOR LONG TERM CARE	\$557.00	Federal
MAGEE, PATRICIA COLLEEN	MINNEAPOLIS, MN	COURSE REQUIRED BY CMS FOR BASIC TRAINING IN END STAGE RENAL DISEASE IN LONG CARE FACILITIES	\$597.00	Federal
MAGEE, PATRICIA COLLEEN	ORLANDO, FL	WILL PROVIDE SURVEYORS UPDATE ABOUT NEW DIALYSIS TECHNOLOGIES STANDARD, DATE REGULATORY OVERSIGHT	\$1,609.00	Federal

# OUT OF STATE TRAVEL REPORT

Name	Place	Purpose	Cost	Source
MANNING, TERI D	MOBILE, AL	TRAINING FOR ALL LABORATORY SURVEYORS, UPDATES OF CLIA, DRUG TESTING, CYTOGENETICS, MOLECULAR TESTING	\$818.00	Federal
MARTIN, JAMES B	NASHVILLE, TN	WILL PROVIDE TRAINING TO IMPROVE SKILL IN IMPLEMENTING EVIDENCE BASED STRATEGIES TO HELP COMMUNITIES	\$1,364.00	Other
MARTIN, JAMES B	CHAPEL HILL, NC	INFORMATION ABOUT THE TACTICS OF TOBACCO INDUSTRIES' EFFORTS TO ATTRACT YOUTH TO USE VARIED TOBACCO	\$175.00	Other
MCANALLY, EDWARD R	ATLANTA, GA	TO PROVIDE INPUT ON DECISIONS REGARDING THE FUTURE DIRECTION OF THE BRFSS PROGRAM	\$1,447.00	Federal
MCCAIN, LALITAA	ATLANTA, GA	BASIC COURSE IN EPIDEMIOLOGY FOR PUBLIC HEALTH PROFESSIONALS, HANDS ON COMPUTER TRAINING USING EPH-INFO 7	\$3,338.00	Federal
MCCOY, JACQUELINE	MEMPHIS, TN	WORKSHOPS WILL FOCUSES ON EVALUTING THE EFFECTIVENESS OF BLOOD PRESSURE SCREENING AND EDUCATION	\$726.00	Federal
MCCOY, JACQUELINE	MEMPHIS, TN	LEARN SKILLS NEEDED TO DEVELOP, ORGANIZE & EVALUATE A NETWORK OF FCN MINISTRIES	\$186.00	Federal
MCCOY, JACQUELINE	MEMPHIS, TN	LEARN SKILLS NEEDED TO DEVELOP, ORGANIZE & EVALUATE A NETWORK OF FCN MINISTRIES	\$179.00	Federal
MCDONALD, TIFFANY	ATLANTA, GA	TRAININGTO PREPARE ABSTRACTORS FOR DATA COLLECTIONIN THE FIELD, DATA SECURITY & DISCUSS OTHER ISSUES	\$825.00	Federal
MCFARLAND, CARRIE M	TAMPA, FL	PROVIDE NEW INFORMATION REGARDING NEW INNOVATIVE SYSTEM ENHANCEMENTS FOR USERS	\$1,652.00	Other
MCFARLAND, CARRIE M	BIRMINGHAM, AL	TO KEEP ABREAST OF PUBLIC HEALTH ISSUES WITH OTHER STATES, BRAINSTORMING & PROBLEM SOLVING	\$464.00	Other
MCGLIVERY, IRMA FAYE	LONGMONT, CO	TRAINING ON CERTIFICATION, COMPLAINTS AND ENFORCEMENT CASES & NEW FEATURES IN ASPEN 10.1.3	\$1,355.00	Federal
MCGINNIS, BELINDA L	ST. LOUIS, MO	TRAINING COURSE FOR NEW SURVEYORS CORE TOPICS ON HOW TO CORRECTLY APPLY AND INTERPRET FED REGUALTIONS	\$1,715.00	Federal
MCKNIGHT, KUTHERIA	DALLAS, TX	KNOWLEDGE IN OPERATIONALIZING THE NEW MEASURES & ASSOCIATED DATA ELEMENTS	\$737.00	Federal
MCKNIGHT, PAMELA L	ST LOUIS, MO	HELP SCHOOL DISTRICTS AND COMMUNITY BASED ORGANIZATIONS ADDRESS TEEN PREGNANCY & STDS	\$605.00	Federal
MCPHERSON, KAREN DENISE	ALEXANDRIA, VA	TRAINING TO LEARN ABOUT THE MAPP PROCESS AND HOW TO UTILIZE TI FOR COMMUNITY/STATE HEALTH ASSESSMENT	\$161.00	Federal
MEEKS, LAVADA	ST. LOUIS, MO	WILL PROVIDE INFORMATION REGARDING MANUFACTURED FOOD PRODUCT TO MEET GOALS FROM OUR RRI PROJECT	\$632.00	Federal
MENDY, VINCENT L	ATLANTA, GA	REVERSE SITE VISIT WITH MDHC TO DISCUSS STRATEGIES FOR EVALUATING CLINICAL INITIATIVES	\$1,911.00	Federal
MILLER, JAMES P JR	BLOOMINGTON, IN	TRAINING OPTIONS TO DELIVER PARTNER SERVICES RECOMMEND BY CDC FOD HIV INFECTION, SYPHILLIS, GONORRHEA	\$1,363.00	Federal
MILLER, SHIRLEY J	WASHINGTON, DC	TRAINING DESIGNED SPECIFICALLY FOR STATE ICC CHAIRS ASSISTING IN IMPLEMENTATION OF EARLY INTERVENTION	\$1,300.00	Federal
MOHAMED, AMEL E	ATLANTA, GA	DESIGNED TO PROVIDE INFORMATION REGARDING EVALUATION FOR BEGINNER OR EXPERIENCE LEVEL PROFESSIONAL	\$2,172.00	Federal
MOHAMED, AMEL E	SAN FRANCISCO, CA	PROVIDE CURRENT INFO ON PUBLIC HEALTH MATERNAL CHILD HEALTH RESEARCH, HEART DISEASE & STROKE PREV.	\$2,286.00	Federal
MOHAMED, AMEL E	NEW ORLEANS, LA	POSTER PRESENTATION AT THE CONFERENCE OF PRACTICES USED TO SHAPE THE ASSESSMENT, TREATMENT & EVALUATION	\$532.00	Federal
MONTGOMERY, KRISTEN	LITTLE ROCK, AR	TO LEARN SKILLS & TO NETWORK WITH PEERS, HEALTH PROFESSIONALS, DISCOVERING THE TREASURES OF WIC	\$1,072.00	Federal
MOODY, WILLIAM F	NEW ORLEANS, LA	DRINKING WATER SRF DIRECTOR REQUIRED MEETING FOR FEDERAL DWSRF PROGRAM FOR FUNDING	\$853.00	Other
MOODY, WILLIAM F	ALEXANDRIA, VA	TO DISCUSS RANGE OF ISSUES & CHALLENGES FACING MS & LATES UPDATES FROM EPA DRINKING WATER PROGRAM	\$2,386.00	Federal
MOODY, WILLIAM F	LITTLE ROCK, AR	WILL AID IN THE GOAL OF PROTECTING PUBLIC HEALTH AS IT RELATES TO PUBLIC DRINKING WATER	\$1,171.00	Other
MOODY, WILLIAM F	WASHINGTON, DC	TO DISCUSS IMPLEMENTATION OF NEW & EXISTING REGULATION AS THEY PERTAIN TO DWSRF	\$2,065.00	Other
MOODY, WILLIAM F	CINCINNATI, OH	COMPLIANCE RELATED ISSUES AND PROBLEMS THAT FACE SMALL WATER SYSTEMS	\$1,303.00	Other
MOON, KATHY S	ALEXANDRIA, VA	TRAINING TO LEARN ABOUT THE MAPP PROCESS AND HOW TO UTILIZE IT FOR COMMUNITY/STATE HEALTH ASSESSMENT	\$641.00	Other
MOON, KATHY S	CHARLOTTE, NC	QUALITY IMPROVEMENT SKILLS IN PUBLIC HEATLH WORK FORCE GOALS SET FORTH	\$1,086.00	Federal
MOON, KATHY S	ATLANTA, GA	TO GAIN INFORMATION FROM NPHII TO STRENGHTEN PUBLIC HEALTH SERVICE EXPANDING	\$878.00	Other
MOONEY, BARBARA	MADISON, WI	CMS REQUIRED COURSE FOR CARE FACILITIES FOR INTELLECTUALLY DISABLED	\$1,848.00	Federal
MOONEY, BARBARA	TALLAHASSEE, FL	TRAINING COURSE FOR ALL HEALTH FACILITY SURVEYORS WHO INVESTIGATE COMPLAINTS IN HEALTH FACILITIES.	\$635.00	Federal
MOORE, DOROTHY MONIQUE	ATLANTA, GA	TRAINING TO COMPLY WITH CDC REQUIREMENTS FOR SPEND PLAN & CHARGING VACCINES	\$1,680.00	Federal
MORENO, DORA ADRIANA	MIAMI, FL	TO ENHANCE THEIR KNOWLEDGE & EXCHANGE INFORMATION ON BEST PRACTICES & NEW TRENDS IN LANGUAGE ACCESS	\$662.00	Federal
MORROW, YOLANDA DIANA	GLENDALE, AZ	TO DISCUSS ISSUES AFFECTING THE REGULATIONS OF HEARING AID SPECIALISTS	\$1,745.00	Other
MORROW, YOLANDA DIANA	ALEXANDRIA, VA	TO DISCUSS ISSUES AFFECTING THE REGULATION OF OCCUPATIONAL THERAPY AND ASSISTANCE LICENSURE	\$651.00	Other
MOSCA, NICHOLAS G	ATLANTA, GA	REQUIRED GRANTEE CAPUS MEETING	\$1,411.00	Federal
MOSCA, NICHOLAS G	WASHINGTON,DC	UPDATE ON NEW TECHNOLOGIES, THIRD PARTY BILLING AND PERFORMANCE MEASURES FOR THE STD PROGRAM	\$927.00	Federal
MOSCA, NICHOLAS G	WASHINGTON, DC	IMPROVED SYSTEM OF HIV/AIDS CARE AND TREATMENT AS WELL AS INCREASING KNOWLEDGE OF PROGRAMMATIC REQ.	\$1,285.00	Federal
MOULDER, JUDY T	CHICAGO, IL	WILL PROVIDE THE ABILITY TO KEEP CURRENT ON HEALTH INFORMATION TRENDS, TCD-10, PRIVACY & SECURITY ISSUES	\$898.00	Other
MOULDER, JUDY T	PHOENIX, AZ	TO ENHANCE MY KNOWLEDGE OF CHANGES IN STANDARDS FOR VITAL RECORDS & LEARN STRATEGIES	\$1,267.00	Other
NANNEY, KRISTIE LANE	LOS ANGELES, CA	CONFERENCE WILL COVER CURRENT & EMERGING NUTRITION & BREASTFEEDING SCIENCE, RESEARCH, POLICY AND PRACTICES	\$1,653.00	Federal
NEWSON, SHAQUEESHA S	ALEXANDRIA, VA	TRAINING TO LEARN ABOUT THE MAPP PROCESS AND HOW TO UTILIZE IT FOR COMMUNITY/STATE HEALTH ASSESSMENT	\$253.00	Federal
NICHOLS, LUCERSIA	ATLANTA, GA	WORKSHOP WILL BE INSTRUCTED ON HOW TO DETECT AND IDENTIFY MEDICALLY INTESTINAL HELMINTHS	\$939.00	Federal
NICHOLS, LUCERSIA	ATLANTA, GA	HOW TO DETECT AND IDENTIFY BLOOD & TISSUE ORGANISM AND HANDS-ON LABORATORY EXERCISE	\$1,104.00	Federal
ONEAL, ELLEN DALE	SAN DIEGO, CA	IDENTIFY WAYS TO BE MORE EFFICIENT AND EFFECTIVE, HOW TO IMPROVE BOARD RELATIONSHIP WITH LEGISLATIVE	\$1,219.00	Federal
OWENS, DAWN E	LONGMONT, CO	TRAINING FOR NEW ASPEN COORDINATOR/SURVEYOR/UNDERSTAND SYSTEM CONFIGURATION, ADMINISTRATION,DATA SEC.	\$2,036.00	Federal
OWENS, DAWN E	WEST DES MOINES, IA	TRAINING COURSE DESIGNED TO UPDATE ON DATA TECHINCIAL INFORMATION, IMPROVEMENT AND RUG SCORES	\$985.00	Federal
OWENS, DAWN E	ANNAPOLIS, MD	CMS UPDATE, QUALITY ASSURANCE TO INDENTIFY /REVIEW TOPICS FOR SA DIRECTORS	\$1,138.00	Federal
PACE, KEN	DALLAS, TX	COURSE IS REQUIRED FOR LONG TERM CARE SURVEYORS FOR BASIC INFORMATION & TRAINING LTC NURSING HOMES	\$964.00	Federal
PAGE, JUDY M	LAS VEGAS, NV	COURSE WILL DEVELOP SKILL INVOLVED IN EVALUATION OF TRAUMA CARE, STRATEGIES, PROCESSESS TO SUPPORT	\$1,797.00	Other
PARKER, KENYATTA S	BALTIMORE, MD	TO STRENGTHEN THE EFFORTS IN REDUCING TEEN PREGNANCY THROUGH EVIDENCE-BASED INNOVATIVE PROGRAMMING	\$666.00	Federal
PARKER, KENYATTA S	WASHINGTON, DC	GRANT TO WORK WITH SCHOOL DISTRICTS & COMMUNITY BASED ORGANIZATION ADDRESSING TEEN PREGNACY & STDS	\$797.00	Federal
PARKER, MELISSA L	ATLANTA, GA	TO SHARE IDEAS THAT ARE SPECIFICALLY RELATED TO PROBLEMS TODAY'S WATER SYSTEM FACE	\$435.00	Federal
PATE, LINDA FAY	BIRMINGHAM, AL	TO KEEP ABREAST OF PUBLIC HEALTH ISSUES WITH OTHER STATES, BRAINSTORMING & PROBLEM SOLVING	\$462.00	Federal
PENNINGTON, JUSTIN R	BETHESDA, MD	TO IMPROVE THE QUALITY OF PEDIATRIC EMERGENCY CARE IN MISSISSIPPI	\$1,673.00	Other

# OUT OF STATE TRAVEL REPORT

Name	Place	Purpose	Cost	Source
PENNINGTON, JUSTIN R	NEW ORLEANS, LA	REPRESENTING THE PROFESSIONAL INTERESTS OF ALL EMERGENCY MEDICAL TECHNICIAN SERVICES	\$1,158.00	Other
PEYTON, DAVID B	ATLANTA, GA	PROVIDE STAFF WITH DIRECTIVE REGARDING FISCAL, SCIENTIFIC & PROGRAMMATIC REQUIREMENTS BY CDC GRANT	\$1,994.00	Federal
PITTS, ANGELA DARLENE	MADISON, WI	CMS REQUIRED COURSE FOR CARE FACILITIES FOR INTELLECTUALLY DISABLED	\$2,071.00	Federal
PITTS, ANGELA DARLENE	ST. LOUIS, MO	COURSE IS DESIGNED TO TEACH CORE TOPICS ON HOW TO CORRECTLY APPLY & INTERPRET FEDERAL REGULATIONS	\$1,742.00	Federal
POLK, BERYL DENISE	SAN ANTONIO, TX	WILL PROVIDE LEARNING ON HEALTH CARE REFORM, LIFE COURSE & ADOLESCENTS SESSION ADDRESSING MAH ISSUES	\$1,166.00	Other
POLK, BERYL DENISE	MIAMI, FL	TO GAIN KNOWLEDGE IN AREAS DIRECTLY IMPACTING PATIENT CARE AND RESEARCH IN SICKLE CELL DISEASE	\$1,251.00	Other
POLK, BERYL DENISE	WASHINGTON, DC	WILL PROVIDE STRATEGIC INSIGHT TO IMPROVING MCH OUTCOMES BY SHARING EFFECTIVE & BEST PRACTICES	\$1,484.00	Other
POLK, BERYL DENISE	BIRMINGHAM, AL	TO KEEP ABREAST OF PUBLIC HEALTH ISSUES WITH OTHERSTATES, BRAINSTORMING & PROBLEM SOLVING	\$477.00	Other
POLK, BERYL DENISE	PONTE VEDRA BEACH, FL	PROVIDE CURRENT INFORMATION ON NEWBORN SCREENING PPROGRAMS IN THE SOUTHEAST REGIONS	\$1,517.00	Other
POPE, DENA	KANSAS CITY, MO	ALLOW STAFF TO LEARN THE LATEST SCIENCE & EVIDENCE IN TOBACCO CONTROL	\$1,672.00	Federal
PRATER, WESLEY F	SAN FRANCISCO, CA	COURSE BENEFITS CLINICIANS TO LEARN CHANGES BASED ON THE NCI ALTS DATA, HPV SCREENING & TRIAGE	\$1,803.00	Federal
PREACELY, NYKICONIA DONYALE	ATLANTA, GA	TO LEARN CURRENT PRACTICES OF APPLIES EPIDEMIOLOGY AND PUBLIC HEALTH RESPONSE	\$865.00	Federal
PREACELY, NYKICONIA DONYALE	ATLANTA, GA	TO ENGAGE IN INTERACTIVE LEARNING SESSIONS AND BRIEFING ON NATIONAL PREPAREDNESS ISSUES	\$1,309.00	Federal
PRICE, TIFFANY S	SAN ANTONIO, TX	TRAINING COURSE DESIGNED TO TEACH NEW STATE AND FEDERAL SURVEYORS CORE TOPICS ON REGULATION	\$2,596.00	Federal
PROFFITT, SALLY	NEW ORLEANS, LA	CONFERENCE WILL ENHANCE/IMPROVE CLINICAL PROCEDURE SUCH AS UROGENITAL EXAMINATION	\$342.00	Other
PURVIS, JEANNIE W	ALBUQUERQUE, NM	TO LEARN THE STANDARD BY WHICH WE ARE GOVERNED TO MAINTAIN VITAL RECORDS FROM CENTER OF HEALTH STATISTICS	\$1,359.00	Other
QUILTER, STEPHEN	ATLANTA, GA	EDUCATIONAL UPDATES ON INNOVATION TO REDUCE FUTURE TB CASES, TB DIAGNOSIS	\$1,303.00	Federal
QUILTER, STEPHEN M	LITTLE ROCK, AR	NEW CHALLENGES/INNOVATIONS IDENTIFIED FOR POPULATION ADDRESSING TB COOPERATIVE	\$946.00	Federal
REED, MARY ALICE	NEW ORLEANS, LA	CONFERENCE WILL ENHANCE/IMPROVE CLINICAL PROCEDURE SUCH AS UROGENITAL EXAMINATION	\$493.00	Federal
REED, MARY ALICE	ALEXANDRIA, VA	IT HELPS MSDH WITH IMPLEMENTATION OF FAMILY PLANNING PROGRAM FOR AFFORDABLE CARE ACT CHANGES	\$1,351.00	Federal
REED, MARY ALICE	CHAPEL HILL, NC	IMPROVING REPRODUCTIVE HEALTH PLANNING, LATEST FP POLICY OVERREVIEWS AND STANDARDS	\$840.00	Federal
RICHARDS, JANEEN F	ALBUQUERQUE, NM	TO LEARN THE STANDARD BY WHICH WE ARE GOVERNED TO MAINTAIN VITAL RECORDS FROM CENTER OF HEALTH STATISTICS	\$1,359.00	Other
RICHARDSON, DIONNE J	BOSTON, MA	TO DISCUSS PROGRESS MADE DURING THE PLANNING PHASE OF OUR ORAL HEALTH GRANT, MAP FOR ORAL HEALTH	\$1,137.00	Fed/Other
RICHARDSON, DIONNE J	HUNTSVILLE, AL	REQUIRED TRAINING FOR ORAL HEALTH PROGRAM'S GRANT	\$1,124.00	Federal
RICHARDSON, DIONNE J	WASHINGTON, DC	INPUT ON DEVELOPING A NATIONAL STRATEGY TO ADDRESS ORAL HEALTH OF VULNERABLE POPULATIONS	\$898.00	Federal
RICHARDSON, DIONNE J	NEW ORLEANS, LA	DENTAQUEST GRANT - HOW TO DRIVE PROGRESS FOR OPTIMAL ORAL HEALTH FOR ALL PEOPLE	\$48.00	Federal
RICHARDSON, DIONNE J	DESTIN, FL	INFORMATION ABOUT DENTAL FIELD, DENTAL PROGRAMS AND OFFICE OPERATION THAT WILL BE BENEFICIAL	\$1,542.00	Federal
RICHARDSON, DIONNE J	ORANGE BEACH, AL	TO PRESENT INFORMATION ON HEALTHCARE REFORM AND ITS IMPACT ON ORAL HEALTH AND PRACTICE OF DENTISTRY	\$360.00	Federal
RICHARDSON, DIONNE J	BOCA RATON, FL	ADDRESSING ORAL HEALTH ISSUES IN MINORITY POPULATIONS & SPECIAL SESSIONS	\$2,226.00	Federal
RICHARDSON, DIONNE J	ATLANTA, GA	GRANT WITH DENTAQUEST FOUNDATION REQUIRED MEETING AND WILL BE A PRESENTER IN THE FINANCING SESSIONS	\$1,136.00	Federal
RICHARDSON, DIONNE J	ORLANDO, FL	TRAINING TO MEET DELIVERABLES AND OBJECTIVES OF THE ORAL HEALTH 2014 GRANT	\$491.00	Federal
RICHARDSON, DIONNE J	BOSTON, MA	REQUIRED TRAINING TO SUPPORT THE IMPLEMENTATION PLAN OF ORAL HEALTH 2014 GRANT	\$179.00	Federal
RICHARDSON, MIRANDA DEMITA	PITTSBURGH, PA	ADDRESS ISSUES SURROUNDING THE IMPORTANCE OF EXPANDING INFANT SAFE SLEEP AWARENESS	\$886.00	Federal
RICHARDSON, RONALD D	NEW ORLEANS, LA	BEST PRACTICES FOR NEW AND EMERGING TECHNOLOGIES AND TRAINING IN THE FIELD OF EMERGENCY MANAGEMENT	\$681.00	Federal
RIELS TINA	ATLANTA, GA	TO ENGAGE IN INTERACTIVE LEARNING SESSIONS AND BRIEFING ON NATIONAL PREPAREDNESS ISSUES	\$841.00	Federal
RILEY, ROGER E	FT. LAUDERDALE, FL	EVALUATE AND LEARN NEW WAYS TO INCREASE WIC PARTICIPATION IN MS. SITE VISIT COLLIER & DADE COUNTY	\$1,996.00	Federal
RILEY, ROGER E	BIRMINGHAM, AL	TO KEEP ABREAST OF PUBLIC HEALTH ISSUES WITH OTHER STATES, BRAINSTORMING & PROBLEM SOLVING	\$393.00	General
RILEY, ROGER E	NEW ORLEANS, LA	TO NETWORK WITH OTHER DEPTS OF PUBLIC HEALTH AND PUBLIC HEALTH UNIVERSITIES	\$673.00	General
ROBINSON, JUDY LYNN	CHICAGO, IL	PROVIDES NETWORKING WITH OTHER STATES & SHARES WITH OUR STAFF INFORMATION ON CSFP PROGRAM	\$613.00	Federal
ROBINSON, JUDY LYNN	SAN FRANCISCO, CA	INFORMATION ON HOW TO EAT HEALTHY & INCORPORATE HEALTHY FRUITS & VEGETABLES IN THE WIC PROGRAMS	\$1,558.00	Federal
ROGERS, JOHNNA RENEE	NASHVILLE, TN	WILL PROVIDE TRAINING TO IMPROVE SKILL IN IMPLEMENTING EVIDENCE BASED STRATEGIES TO HELP COMMUNITIES	\$1,539.00	Other
ROGERS, JOHNNA RENEE	NATIONAL HARBOR, MD	WILL PROVIDE INTENSIVE COALITION SPECIFIC TRAINING, EXPAND KNOWLEDGE IN PREVENTION SCIENCE TO EMPOWER	\$1,636.00	Other
ROSAS-ALTIERI, WENDY	FT. LAUDERDALE, FL	EVALUATE AND LEARN NEW WAYS TO INCREASE WIC PARTICIPATION IN MS. SITE VISIT COLLIER & DADE COUNTY	\$1,759.00	Federal
ROSAS-ALTIERI, WENDY	BIRMINGHAM, AL	TO KEEP ABREAST OF PUBLIC HEALTH ISSUES WITH OTHER STATES, BRAINSTORMING & PROBLEM SOLVING	\$220.00	Federal
SANDERS, KAYLA CONRAD	ST. LOUIS, MO	TRAINING COURSE FOR NEW SURVEYORS, CORE TOPICS ON HOW TO CORRECTLY APPLY AND INTERPRET FED REGUALTIONS	\$1,671.00	Federal
SANFORD, BRANDI	NASHVILLE, TN	WILL PROVIDE TRAINING TO IMPROVE SKILL IN IMPLEMENTING EVIDENCE BASED STRATEGIES TO HELP COMMUNITIES	\$1,210.00	Other
SCOTT, TIMMY FITZGERALD	ROCKVILLE, MD	TRAINING FOR RYAN WHITE HIV/AIDS PART B PROGRAM LEGISLATIVE AND FISCAL RESPONSIBILITIES	\$1,188.00	Federal
SCOTT, TIMMY FITZGERALD	WASHINGTON, DC	IMPROVED SYSTEM OF HIV/AIDS CARE AND TREATMENT AS WELL AS INCREASING KNOWLEDGE OF PROGRAMMATIC REQ.	\$1,563.00	Federal
SEALE, DANIELLE C	NEW ORLEANS, LA	PRE CONFERNECE ADDRESS, SYSTEM CAPACITY OF URBAN PUBLIC HEALTH ADDRESSING MEDICAID	\$414.00	Federal
SEALE, DANIELLE C	WASHINGTON, DC	WILL ASSIST IN TRAINING AND STRATEGIES THAT WILL BE UTILIZED IN THE DEVELOPMENT OF HOME VISITATION PROGRAM	\$986.00	Federal
SEAWRIGHT, KENNETH C	PHILADELPHIA, PA	TO RECEIVE UPDATED INFORMATION ON CURRENT PUBLIC HEALTH PREPAREDNESS ISSUES	\$1,032.00	Federal
SEAWRIGHT, KENNETH C	ALBANY, NY	COURSE DESIGNED TO HELP ASSURE COST INCURRED BY MSDH IS DOCUMENTED FOR SUBMISSION TO FEMA	\$157.00	Federal
SHELBY, MILLICENT LOUISE	WASHINGTON, DC	REQUIRED FOR GRANT AWARD/TRAINING IN POLICY, SYSTEM AND IMPROVING THE ROLE OF PUBLIC HEALTH IN CANCER PREV.	\$1,118.00	Federal
SHELL, PAMELA ANN	MINNEAPOLIS, MN	REQUIRED COURSE FOR ALL END STAGE RENAL DISEASE FACILITY INSPECTORS	\$2,188.00	Federal
SHORT, EUNICE	GLENDALE, AZ	EFFECTIVE PRACTICES AND COMPONENTS OF COMPREHENSICE EHD PROGRAMS	\$1,564.00	Federal
SHORT, EUNICE	MINNEAPOLIS, MN	LEARN ABOUT STATES STRATEGIES FOR MEASURING & IMPROVING CHILD AND FAMILY SPECIAL NEEDS OUTCOMES	\$1,941.00	Federal
SHORT, EUNICE	NEW ORLEANS, LA	PROVIDE VALUABLE KNOWLEDGE IN QUALITY SERVICES TO FRIST STEPS EIP CHILDREN AND FAMILIES	\$342.00	Federal
SHOWS, KIMBERLY DENISE	CHICAGO, IL	WILL PROVIDE THE ABILITY TO KEEP CURRENT ON HEALTH INFORMATION TRENDS, TCD-10, PRIVACY & SECURITY ISSUES	\$898.00	Other



# OUT OF STATE TRAVEL REPORT

Name	Place	Purpose	Cost	Source
SIMMONS, DAVID	BIRMINGHAM, AL	IMPROVE SKILLS & UPDATES IN NUTRITION STANDARDS OF INFANTS, CHILDREN & ADOLESCENTS, NETWORKING	\$1,041.00	Federal
SIMPSON, JAMES C	SAYREVILLE, NJ	TO ASSIST THE STATE OF NEW JERSEY IN EMERGENCY INCIDENT FOR HURRICANE SANDY	\$797.00	Federal
SMITH, JAN P	MOBILE, AL	TRAINING FOR ALL LABORATORY SURVEYORS, UPDATES OF CLIA, DRUG TESTING, CYTOGENETICS, MOLECULAR TESTING	\$898.00	Federal
SMITH, MILDRED LOUISE	ATLANTA, GA	BASIC COURSE IN EPIDEMIOLOGY FOR PUBLIC HEALTH PROFESSIONALS, HANDS ON COMPUTER TRAINING USING EPI-INFO 7	\$3,352.00	Federal
SMITH, MILDRED LOUISE	ATLANTA, GA	TO ENGAGE IN INTERACTIVE LEARNING SESSIONS AND BRIEFING ON NATIONAL PREPAREDNESS ISSUES	\$843.00	Federal
SMITH, ROGER WILLIAM	NEW ORLEANS, LA	LOUISIANA-MS HOSPICE & PALLIATIVE CARE LEADERSHIP AND MANAGEMENT	\$183.00	Federal
SMITH, ROGER WILLIAM	ATLANTA, GA	REQUIRED CMS TRAINING UPDATES THE STATE DIRECTORS ON HOT TOPICS CMS UPDATES & EFFECTIVENESS	\$562.00	Federal
SMITH, ROGER WILLIAM	TALLAHASSEE, FL	REQUIRED TO IDENTIFY/REVIEW HOT TOPICS, CMS UPDATES, OTHER ITEMS SUBMITTED BY THE SA DIRECTORS	\$410.00	Federal
SMITH, ROGER WILLIAM	ATLANTA, GA	CMS STATE SURVEY AGENCY DIRECTOR MEETING & FALL COLLABORATIVE REQUIRED MEETING	\$952.00	Federal
SPEED, DONNA EVORA	KANSAS CITY, MO	TO LOOK AT FUNDING AFFORDABLE ACT POLICY EVALUATION	\$107.00	Federal
SPINKS, LATORIA T	OMAHA, NE	TRAINING ON BASIC CONCEPTS OF DISEASE INTERVENTION WITH AN EMPHASIS ON INTERVIEWING AND STD CASE MGMT	\$2,577.00	Federal
SPRINGER, MONICA ANN	TN/AL/GA/AR/LA	CONDUCT ROUTINE INSPECTIONS AND AUDITS OF AMBULANCES/ TRAUMA CENTER	\$246.00	Other
SPRINGER, MONICA ANN	NEW ORLEANS, LA	TRAUMA CONFERENCE FOR SOFTWARE PROGRAM USED FOR ON-LINE TRAUMA CENTER APPLICATION	\$467.00	Other
STALLINGS, NANCY C.	SANDESTIN, FL	DRINKING WATER ADMINISTRATOR WILL RECEIVE UPDATES FOR DRINKING WATER LOAN PROGRAM	\$1,545.00	Other
STALLINGS, NANCY C.	NEW ORLEANS, LA	TRAINING SESSION WILL PROVIDE INFO NECESSARY FOR THE FINANCIAL PORTION OF PROGRAM FEDERAL REGULATIONS	\$852.00	Other
STEWART, JAMES D	WASHINGTON, DC	MEETING FOCUSES ON THE FUTURE OF RYAN WHITE PROGRAM/STATE LEVEL TREATMENT CASCADES/ACTING TO END HIV	\$949.00	General
STEWART, JAMES D	ROCKVILLE, MD	TRAINING FOR RYAN WHITE HIV/AIDS PART B PROGRAM LEGISLATIVE AND FISCAL RESPONSIBILITIES	\$1,227.00	Federal
STINSON, MONICA L	ATLANTA, GA	TO SHARE INNOVATION AND LESSONS LEARNED IN DEVELOPING RESPECTIVE ASTHMA PROGRAM	\$1,249.00	Federal
STINSON, MONICA L	ATLANTA, GA	TO NETWORK WITH OTHER STATES & PROFESSIONALS, SHARE IDEAS ON WAYS TO KEEP COALITION ACTIVE IN COMMUNITY	\$1,744.00	Federal
STINSON, MONICA L	DESTIN, FL	PROVIDES LEARNING ADVANCES IN MEDICINES AND WAYS TO HELP MAKE MISSISSIPPI HEALTHIER	\$1,668.00	Federal
STRINGFELLOW, SANDRA	SACRAMENTO, CA	SUBMITTED AN ABSTRACT OF THE HEALTH PHYSICS SOCIETY ON RECRUIT & TRAIN NON-RADIATION PROFESSIONALS	\$2,183.00	Federal
STRINGFELLOW, SANDRA	ATLANTA, GA	TRAINING WILL COVER ALL ASPECTS OF RADIOCHEMICAL PROJECT PLANNING USING KEYS COMPONENT OF MARLAP	\$685.00	Federal
STRINGFELLOW, SANDRA	AUSTIN, TX	PROVIDE VALUABLE INSIGHT TO HELP IMPROVE LABORATORY SKILLS DURING A RADIOLOGICAL EMERGENCY	\$1,945.00	Federal
STRINGFELLOW, SANDRA	LAS VEGAS, NV	WILL HAVE HANDS ON EXPERIENCE WITH A VARIETY OF PORTABLE RADIATION DETECTION INSTRUMENTS & DETECTORS	\$1,024.00	Fed/Other
SURKIN, JOSEPH M	SEATTLE, WA	EXCHANGES, NETWORKING, DISCUSSING OUR PAST AND CURRENT IMPLENENTATION & LEARN HOW TO UTILIZE MICROSOFT	\$1,309.00	Federal
SUTTON, VICTOR D	CHARLOTTE, NC	CURRENT ISSUES REGARDING OBESITY AND HEALTHCARE POLICY, SOLUTIONS, PREVENTION TO THE STRATEGIES	\$901.00	Federal
SUTTON, VICTOR D	ATLANTA, GA	REVERSE SITE VISIT WITH MDHC TO DISCUSS STRATEGIES FOR EVALUATING CLINICAL INITIATIVES	\$1,843.00	Federal
SWAYZE, ELIZABETH S	ST. LOUIS, MO	WILL PROVIDE INFORMATION REGARDING MANUFACTURED FOOD PRODUCT TO MEET GOALS FROM OUR RRI PROJECT	\$741.00	Federal
SWAYZE, ELIZABETH S	TAMPA, FL	REQUIRED MEETING FPR FDA RAPID RESPONSE TEAM DEVELOPMENT GRANT AWARD TO FOOD PROTECTION	\$848.00	Federal
SWAYZE, ELIZABETH S	ORLANDO, FL	REQUIREMENT OF THE FDA GRANT MEET WITH FLORIDA RAPID RESPONSE TEAM TO LEARN BEST PRACTICES & CAPACITIES	\$889.00	Federal
TAYLOR, DIETRICH TERRYCE	INDIANAPOLIS, IN	TO EXPAND MY KNOWLEDGE ON DIABETES EDUCATION & ACQUAINT ME WITH CUTTING EDGE PRACTICES	\$1,376.00	Federal
TAYLOR, DIETRICH TERRYCE	WASHINGTON, DC	GUIDELINES & SESSIONS THAT ARE USED TO SHAPE THE SCOPE OF DIABETES TREATMENT	\$641.00	Federal
TAYLOR, DIETRICH TERRYCE	CHICAGO, IL	TO EXPAND MY KNOWLEDGE ON DIABETES EDUCATION, CUTTING EDGE EVIDENCE BASED PRACTICES	\$2,189.00	Federal
TAYLOR, DIETRICH TERRYCE	BIRMINGHAM, AL	TRAINING TO ASSIST THE COALITION IN THEIR OBJECTIVES AND DEVISING A STRATEGIC PLAN	\$351.00	Federal
TAYLOR, DIETRICH TERRYCE	ATLANTA, GA	SKILLS TO ORGANIZE A STRONG COALITION AND DEVELOP AN ACTION PLAN FOR DIABETES PREVENTION & CONTROL	\$1,592.00	Federal
TAYLOR, DIETRICH TERRYCE	MILPITAS, CA	FOCUSES ON EQUIPPING HEALTH PROFESSIONALS WITH THE KNOWLEDGE & SKILLS TO HELP INDIVIDUALS WITH DIABETES	\$250.00	Federal
TAYLOR, DIETRICH TERRYCE	NEW ORLEANS, LA	POSTER PRESENTATION AT THE CONFERENCE OF PRACTICES USED TO SHAPE THE ASSESSMENT, TREATMENT & EVAL.	\$923.00	Federal
TAYLOR, JESSIE ROMA	COUNCE, TN	YEARLY UPDATE ON CHRONIC ILLNESSES	\$188.00	General
TERRY, PATRICIA	WASHINGTON, DC	FACILITATE DISCUSSIONS ON CASE DEFINITIONS FOR CATEGORIES OF DISEASE DIAGNOSIS, NEWBORN SCREENING	\$1,474.00	Other
THOMAS, EVA G	ROCKVILLE, MD	TRAINING FOR RYAN WHITE HIV/AIDS PART B PROGRAM LEGISLATIVE AND FISCAL RESPONSIBILITIES	\$1,241.00	Federal
THOMAS, EVA G	WASHINGTON, DC	IMPROVED SYSTEM OF HIV/AIDS CARE AND TREATMENT AS WELL AS INCREASING KNOWLEDGE OF PROGRAMMATIC REQ.	\$1,531.00	Federal
THOMAS, LAVETA	WASHINGTON, DC	TO LEARN AND NETWORK WITH OTHER STATE MRC LEADERS ON LOCAL EMERGENCY RESPONSE PLANS & PUBLIC HEALTH	\$139.00	Federal
THOMAS, WILLIAM OSCAR	SAN FRANCISCO, CA	TRAINING ON THE LATEST ORACLE DATABASE OPERATIONS AND SECURITY TECHNIQUES FOR SUPPORT OF IMMUN. DATABASE	\$2,597.00	Federal
THOMPSON, EMILY DIANE	NEW ORLEANS, LA	CONFERENCE WILL ENHANCE/IMPROVE CLINICAL PROCEDURES SUCH AS UROGENITAL EXAMINATION	\$500.00	Other
THOMPSON, LAKEEFE T	WILLIAMSBURG, VA	TO INCREASE AWARENESS & UNDERSTANDING OF THE IMPACTS OF FEDERAL HEALTHCARE REFORM	\$1,350.00	Other
TIPPANI, SIRISHA REDDY	ATLANTA, GA	TO SHARE INNOVATION AND LESSONS LEARNED IN DEVELOPING RESPECTIVE ASTHMA PROGRAM	\$1,217.00	Federal
TRAVNICEK, ROBERT G	SCOTTSDALE, AZ	PROFESSIONAL MEETING	\$366.00	General
TRAVNICEK, ROBERT G	POINT CLEAR, AL	ANNUAL TRAINING FOR MEDICAL PROFESSIONALS	\$398.00	General
TUCKER, LAURA C	BIRMINGHAM, AL	TRAINING TO ASSIST THE COALITION IN THEIR OBJECTIVES AND DEVISING A STRATEGIC PLAN	\$260.00	Federal
TUCKER, VICKIE ANN	ATLANTA, GA	WILL PRESENT AN ABSTRACT HIGHLIGHTING MS ACCOMPLISHMENTS IN REGARDS TO TOBACCO CESSATION EFFORTS	\$1,083.00	Other
TUCKER, VICKIE ANN	WASHINGTON, DC	TRAINING HEALTH PROFESSIONALS TO PROMOTE, IMPLEMENT & EVALUATE THE SOMKING CESSATION & REDUCTION PROGRAM	\$918.00	Other
TURK, ANGELA RENEE	ATLANTA, GA	BASIC COURSE IN EPIDEMIOLOGY FOR PUBLIC HEALTH PROFESSIONALS, HANDS ON COMPUTER TRAINING USING EPI-INFO 7	\$3,054.00	Federal
VARDAMAN, JERRY WAYNE	ATLANTA, GA	ASSIST IN ALIGNMENT OF CDC'S HIV PREVENTION IN DEVELOPMENT OF STRATEGIES/HIV INTERVENTIONS	\$501.00	Federal
VARDAMAN, JERRY WAYNE	HOUSTON, TX	TRAINING WILL PROVIDE OPPORTUNITY TO DISCUSS REQUIREMENTS AND EXPECTATIONS UNDER REVISED HIV PLANNING	\$450.00	Federal
VARDAMAN, JERRY WAYNE	WASHINGTON, DC	TO SHARE IDEAS AND EXCHANGE STRATEGIES ASSOCIATED WITH IMPLEMENTATION OF PREVENTION & PS12-1201	\$132.00	Federal
VARNADO, WENDY CAROL	FORT COLLINS, CO	TRAINING COVERS SPECIFIC TECHNIQUES AND PROCEDURES FOR TESTING MOSQUITOES FOR ARBOVIRUSES	\$1,895.00	Other
VARNADO, WENDY CAROL	NASHVILLE, TN	MEETING WILL PROVIDE, ILLUSTRATE & HIGHLIGHT THE LATEST ADVANCES IN SCIENCE, TECHNOLOGY, EDUCATION	\$572.00	Federal
VAUGHN, RICHARD WAYNE	SAYREVILLE, NJ	TO ASSIST THE STATE OF NEW JERSEY IN EMERGENCY INCIDENT FOR HURRICANE SANDY	\$761.00	Federal

# OUT OF STATE TRAVEL REPORT

Name	Place	Purpose	Cost	Source
VAUGHN, RICHARD WAYNE	BALTIMORE, MD	WILL ALLOW ME TO TEACH THE LOGISTICS SECTION COURSE WHICH WILL EXPAND AGENCY ABILITY	\$126.00	Federal
VAUGHN, RICHARD WAYNE	WASHINGTON, DC	INSIGHT IN FEDERAL PERSPECTIVE ON DEVELOPMENT OF HEALTHCARE COALITIONS TO ASSIST TRAUMA REGION	\$1,853.00	Federal
VAUGHN, RICHARD WAYNE	ATLANTA, GA	TO ENGAGE IN INTERACTIVE LEARNING SESSIONS AND BRIEFING ON NATIONAL PREPAREDNESS ISSUES	\$833.00	Federal
VAUGHN, RICHARD WAYNE	CHARLOTTE, NC	TRAINING FOR FULL SALE EXERICES WITH NC MOBILE FIELD HOSPITAL	\$136.00	Federal
VEAZEY, CRYSTAL COVINGTON	PHILADELPHIA, PA	TO IMPROVE PROGRAMS TO PREVENT LEAD POISONING, ELIMINATE INDOOR ENVIRONMENTAL HAZARDS	\$1,217.00	Federal
WALKER, EVELY RICKS	CHARLOTTE, NC	CURRENT ISSUES REGARDING OBESITY AND HEALTHCARE POLICY, SOLUTIONS, PREVENTION TO THE STRATEGIES	\$796.00	Federal
WALKER, EVELY RICKS	ATLANTA, GA	REVERSE SITE VISIT WITH MDHC TO DISCUSS STRATEGIES FOR EVALUATING CLINICAL INITIATIVES	\$1,698.00	Federal
WALKER, EVELY RICKS	WASHINGTON, DC	PROVIDE EXPOSURE TO THE CHALLENGE OF VARIOUS RACIAL AND ETHNIC GROUPS	\$149.00	Federal
WALKER, EVELY RICKS	SAN FRANCISCO, CA	PROVIDE AN ORAL PRESENTATION ON THE PUBLISHED PAPER ON HTN MEDICATION USE TREATMENT OF HYPERTENSION	\$877.00	General
WALKER, EVELY RICKS	TOPEKA, KS	MEETING WITH KANSAS DEPT OF HEALTH BUREAU OF HEALTH PROMOTION. PROVIDE MENTORING OPPORTUNITY	\$1,466.00	Federal
WALKER, EVELY RICKS	WASHINGTON, DC	DISCUSS POLICY STRATEGIES THAT WILL HELP IMPROVE NEIGHBORHOOD SCHOOLS AND WORKPLACE CONDITIONS	\$902.00	Federal
WALKER, EVELY RICKS	BETHESDA, MD	REQUIRED GRANTEES MEETING WILL PROVIDE DIRECTIONS & UPDATES ON MINORITY HEALTH CURRENT & FUTURE PROJECTS	\$911.00	Federal
WALKER, EVELY RICKS	NATIONAL HARBOR, MD	CONFERENCE WILL ENHANCE MY KNOWLEDGE & SKILLS FOR ADDRESSING HEALTH DISPARITIES ISSUES, RESEARCH	\$365.00	Fed/Other
WALKER, EVELY RICKS	NATIONAL HARBOR, MD	CONFERENCE WILL ENHANCE MY KNOWLEDGE & SKILLS FOR ADDRESSING HEALTH DISPARITIES ISSUES, RESEARCH	\$577.00	Federal
WALKER, ROSALYN C	PHOENIX, AZ	COURSE REVIEW IN LUNG DISEASE IN CHILDREN	\$1,399.00	Federal
WALKER, THIA JASMINE	BATON ROUGE, LA	STAFF WILL PRESENT ABSTRACT ENTITLED THE MS HEMOGLOBINOPATHY SURVEILLANCE REGISTRY	\$1,218.00	Fed/Other
WALLS, TAMEKA L	MEMPHIS, TN	TRAINING ON DATA COLLECTION, INSTRUMENT USAGE AND DATA TRANSFER PROCEDURES	\$126.00	Federal
WALTERS, KAREN L	MOBILE, AL	EDUCATE/UPDATE OF PUBLIC WATER SUPPLY SECTION PLANNING COMMITTEE	\$253.00	Other
WALTERS, KAREN L	ATLANTA, GA	TO SHARE IDEAS THAT ARE SPECIFICALLY RELATED TO PROBLEMS TODAY'S WATER SYSTEM FACE	\$464.00	Other
WASHINGTON, DASHUNDA RASHELLE	HUNTSVILLE, AL	POSTER PRESENTATION AT THE CONFERENCE FOR PEER REVIEW/TRAINING WILL FOCUS ON RESEARCH, EDUCATION	\$650.00	Other
WASHINGTON, MCARTHUR	BIRMINGHAM, AL	TO KEEP ABREAST OF PUBLIC HEALTH ISSUES WITH OTHER STATES, BRAINSTORMING & PROBLEM SOLVING	\$503.00	General
WATSON, LATASHA CASANDRA	LAS VEGAS, NV	TRAINING WILL PROVIDE RESOURCES AND SKILLS TO HELP BETTER UNDERSTAND THE NEW HIV PLANNING PROCESS	\$139.00	Federal
WELCH, STANLEY RAY	INDIANAPOLIS, IN	UPDATES THAT WILL AFFECT REGULATION OF THE MILK PROGRAM FOR THE STATE OF MISSISSIPPI	\$1,260.00	Federal
WESLEY, MARY MELISSA	SAN ANTONIO, TX	WILL PROVIDE LEARNING ON HEALTH CARE REFORM, LIFE COURSE & ADOLESCENTS SESSION ADDRESSING MAH ISSUES	\$1,198.00	Federal
WESLEY, MARY MELISSA	CHICAGO, IL	FORUM FOR FORMER AND CURRENT MCN TRAINEES TO WORK TOGETHER TO ENHANCE LEADERSHIPS SKILLS, NETWORK	\$582.00	Federal
WHITE, DANA J	DENVER, CO	MEETING REQUIRED FOR SENTINEL LABS AND FIRST RESPONDERS TRAINING POLICIES, MODEL PRACTICES	\$1,979.00	Federal
WHITTEN, KELLI L	LITTLE ROCK, AR	TO LEARN SKILLS & TO NETWORK WITH PEERS, HEALTH PROFESSIONALS, DISCOVERING THE TREASURES OF WIC	\$851.00	Federal
WILLIAMS, ALISA DIANE	BLOOMINGTON, MN	LEARN HOW TO MAXIMIZE DATA ACROSS ALL FIELDS OF EMERGENCY QUALITY DATA COLLECTION & REPORTING	\$1,944.00	Fed/Other
WILLIAMS, ALISA DIANE	BETHESDA, MD	TO IMPROVE THE QUALITY OF PEDIATRIC EMERGENCY CARE IN MISSISSIPPI	\$1,669.00	Federal
WILLIAMS, ALISA DIANE	NEW ORLEANS, LA	REPRESENTING THE PROFESSIONAL INTERESTS OF ALL EMERGENCY MEDICAL TECHNICIANS SERVICES	\$1,401.00	Other
WILLIAMS, ALISA DIANE	BOSIE, IDAHO	DESIGNED FOR EMS PROGRAM MANAGMENT, GRANT ADMINISTRATION NEEDS AT LOCAL, REGIONAL & STATEWIDE LEVELS	\$1,833.00	Other
WILLIAMS, ALISA DIANE	WASHINGTON, DC	RESPONSIBLE FOR STATE LEVEL POLICY-MAKING EMS MANAGEMENT AND GRANT ADMINISTRATION	\$1,367.00	Other
WILLIAMS, ALISA DIANE	ATLANTA, GA	SHARE EXPERIENCE AND PREPAREDNESS EFFORTS WITH PARTNER STATES	\$1,269.00	Federal
WILLIAMS, ANGELIA D	SAN FRANCISCO, CA	TO ENGAGE IN HEALTHCARE PROFESSIONAL & RECRUITMENT ACTIVITIES TO PROVIDE MEDICAL ASSISTANCE IN RURAL AREAS	\$2,425.00	Federal
WILLIAMS, ANGELIA D	LITTLE ROCK, AR	TO MEET THE GOAL OF STATE RURAL HEALTH RELATED TO WORKFORCE DEVELOPMENT	\$816.00	Federal
WILLIAMS, CHRISTOPHER HEATH	SAYREVILLE, NJ	TO ASSIST THE STATE OF NEW JERSEY IN EMERGENCY INCIDENT FOR HURRICANE SANDY	\$797.00	Federal
WILLIAMS, EUREKA L	NEW ORLEANS, LA	CONFERENCE WILL ENHANCE/IMPROVE CLINICAL PROCEDURES SUCH AS UROGENITAL EXAMINATION	\$457.00	Federal
WILLIAMS, EUREKA L	ALEXANDRIA, VA	IT WILL HELP MSDH WITH IMPLEMENTATION OF FAMILY PLANNING PROGRAM FOR AFFORDABLE CARE ACT CHANGES	\$1,231.00	Federal
WILLIAMS, LASHUNDA LENA	ATLANTA, GA	WILL ADDRESS NATIONAL & STATE POLICY ISSUES IN CONDUCTING BIRTH DEFECTS SURVEILLANCE	\$1,207.00	Other
WILLIAMS, MELANIE KAY	ALEXANDRIA, VA	TRAINING TO LEARN ABOUT THE MAPP PROCESS AND HOW TO UTILIZE IT FOR COMMUNITY/STATE HEALTH ASSESSMENT	\$278.00	Other
WILLIAMS, STELLA MARIE	FT. LAUDERDALE, FL	EVALUATE AND LEARN NEW WAYS TO INCREASE WIC PARTICIPATION IN MS. SITE VISIT COLLIER & DADE COUNTY	\$1,930.00	Federal
WILSON, MARC D	SEATTLE, WA	EXCHANGES, NETWORKING, DISCUSSING OUR PAST AND CURRENT IMPLENENTATION & LEARN HOW TO UTILIZE MICROSOFT	\$1,268.00	Federal
WINBORNE, LUCY M	ANNAPOLIS, MD	CMS UPDATE, QUALITY ASSURANCE TO IDENTIFY /REVIEW TOPICS FOR SA DIRECTORS	\$1,272.00	Federal
WINSTEAD, ROBIN MARIE	MINNEAPOLIS, MN	COURSE REQUIRED BY CMS FOR BASIC TRAINING IN END STAGE RENAL DISEASE FACILITIES	\$2,007.00	Federal
WINSTEAD, ROBIN MARIE	TALLAHASSEE, FL	TRAINING COURSE FOR ALL HEALTH FACILITY SURVEYORS WHO INVESTIGATE COMPLAINTS IN HEALTH FACILITIES.	\$737.00	Federal
WINTER, AMY W	ARLINGTON, VA	FOCUS ON THE IMPLEMENTATION OF SURGEON GENERAL'S CALL TO ACTION TO SUPPORT BREASTFEEDING	\$496.00	Federal
WINTER, AMY W	LOS ANGELES, CA	CONFERENCE COVERS CURRENT & EMERGING NUTRITION & BREASTFEEDING SCIENCE, RESEARCH, POLICY AND PRACTICES	\$1,406.00	Federal
WINTER, AMY W	ARLINGTON, VA	LEARN ABOUT BREASTFEEDING ADVOCACY EFFORTS & WAYS TO INCREASE THE BREASTFEEDING RATES IN MS	\$247.00	Federal
WINTERS, GWENDOLYN P	WASHINGTON, DC	WILL PROVIDE STRATEGIC INSIGHT TO IMPROVING MCH OUTCOMES BY SHARING EFFECTIVE & BEST PRACTICES	\$932.00	Federal
WOODS, EVANDIA	SAN ANTONIO, TX	WILL PROVIDE LEARNING ON HEALTH CARE REFORM, LIFE COURSE & ADOLESCENTS SESSION ADDRESSING MAH ISSUES	\$898.00	Federal
WOODS, JULIA	SCOTTSDALE, AZ	UPDATE ON CURRENT ISSUES AND SCHEDULING ACTIONS FOR CONTROLLED SUBSTANCES	\$608.00	General
WRIGHT, CAMILLA DIANNE DENNEY	TALLAHASSEE, FL	TRAINING COURSE FOR ALL HEALTH FACILITY SURVEYORS WHO INVESTIGATE COMPLAINTS IN HEALTH FACILITIES	\$777.00	Federal
YAMAT, ROHANA	MOBILE, AL	TO SHARE INFORMATION AND DEVELOP TECHNOLOGY FOR SAFE DRINKING WATER	\$839.00	Other
YOUNG, ARTIS MARIE	WASHINGTON, DC	IMPROVED SYSTEM OF HIV/AIDS CARE AND TREATMENT AS WELL AS INCREASING KNOWLEDGE PROGRAMMATIC REQ.	\$1,586.00	Federal
YOUNGBLOOD, DELLA LENE	ASHEVILLE, NC	REQUIRED FOR GRANT CONDITIONS AND UPDATES ON SIRG BUDGET	\$1,463.00	Other
YOUNGBLOOD, DELLA LENE	DESTIN, FL	DISPLAY RADON BOOTH TO PROVIDE INFORMATION AT THE HOME BUILDER'S CONFERENCE, REQUIREMENT OF GRANTS	\$2,086.00	Other
YOUNGBLOOD, DELLA LENE	LAS VEGAS, NV	EDUCATION/TRAINING/BUILDING TECHNICAL CAPACITY IN STATE RADON PROGRAMS	\$2,503.00	Other
YOUNGBLOOD, DELLA LENE	ATLANTA, GA	RADON MEASUREMENT CLASS REQUIRED BY GRANT	\$687.00	Other



## OUT OF STATE TRAVEL REPORT


Name	Place	Purpose	Cost	Source
ZHANG, LEI	SAN ANTONIO, TX	WILL PROVIDE LEARNING ON HEALTH CARE REFORM, LIFE COURSE & ADOLESCENTS SESSION ADDRESSING MAH ISSUES	\$1,317.00	Federal
ZHANG, LEI	SAN FRANCISCO, CA	PROVIDE CURRENT INFO ON PUBLIC HEALTH MATERNAL CHILD HEALTH RESEARCH, HEART DISEASE & STROKE PREV.	\$2,405.00	Federal
ZHANG, LEI	LAWRENCE, KS	HELP TO ACQUIRE BASIC UNDERSTANDING OF HOW SEMS IS APPLIED IN THE PUBLIC HEALTH & IS ANALYZED	\$1,016.00	Other
ZHANG, LEI	KANSAS CITY, MO	ALLOW STAFF TO LEARN THE LATEST SCIENCE & EVIDENCE IN TOBACCO CONTROL	\$1,666.00	Federal
			<b>\$593,246.00</b>	

## VEHICLE MILEAGE REPORT

ASSET	DESCRIPTION	VIN	MAKE	MODEL	MILES	ODOMETER
301-0043525	1995 BRONCO UTILITY 4X4	1FMEU15H2SLB05697	FORD	BRONCO	8,694	156,496
301-0054790	2000 DRW SUPER DUTY MOTORIZED	1FCNF53S3Y0A14663	FORD	DRW SUPER DUTY	5,198	67,575
301-0057359	2000 DRW SUPER DUTY MOTORIZED	1FCNF53S5Y0A14275	FORD	DRW SUPER DUTY	1,439	18,702
301-0059097	2004 C2500 WAGON 4 DOOR	3GNGC26G34G141756	CHEV	C2500	5,099	45,893
301-0060381	2004 ECONOLINE VAN CARGO VAN	1FTRE14W24HB13128	FORD	ECONOLINE VAN	11,956	107,607
301-0060516	2004 RAM TRUCK CREW PICKUP 4X4	3D7MU48C44G233429	DODG	RAM TRUCK	12,432	111,891
301-0060555	2004 SIERRA PICKUP	1GTEC14V94Z335123	GMC	SIERRA	2,256	20,304
301-0062607	2005 CROWN VICTORIA SEDAN 4 DOOR	2FAPF74W85X167511	FORD	CROWN VICTORIA	5,298	42,386
301-0062749	2005 CARAVAN SPORT VAN FRONT	1D4GP24R15B428091	DODG	CARAVAN	17,667	141,339
301-0062907	2006 ECONOLINE VAN CARGO VAN	1FTNE24W96HA35857	FORD	ECONOLINE VAN	8,868	62,073
301-0062908	2006 ECONOLINE VAN CARGO VAN	1FTNE24W76HA35856	FORD	ECONOLINE VAN	5,324	37,266
301-0063889	2006 RAM TRUCK CREW PICKUP 4X4	1D7KS28C06J162815	DODG	RAM TRUCK	9,463	66,243
301-0064573	2006 TITAN CREW PICKUP 4X4	1N6BA07BX6N507090	NISS	TITAN	17,124	119,871
301-0064574	2006 TITAN CLUB CAB PICKUP 4X4	1N6BA06B76N504746	NISS	TITAN	24,050	168,350
301-0064575	2006 TITAN CLUB CAB PICKUP 4X4	1N6BA06B96N505283	NISS	TITAN	22,190	155,329
301-0064576	2004 TITAN CREW PICKUP	1N6AA07A94N547533	NISS	TITAN	17,751	159,758
301-0064577	2004 TITAN CREW PICKUP 4X4	1N6AA07B04N583071	NISS	TITAN	17,901	161,107
301-0064578	2006 TITAN CLUB CAB PICKUP 4X4	1N6BA06B86N504741	NISS	TITAN	18,917	132,420
301-0064579	2006 TITAN CREW PICKUP 4X4	1N6BA07B06N508605	NISS	TITAN	16,829	117,804
301-0064580	2004 TITAN CREW PICKUP	1N6AA07A84N561486	NISS	TITAN	17,072	153,644
301-0064605	2006 TITAN CLUB CAB PICKUP 4X4	1N6BA06B56N506883	NISS	TITAN	24,516	169,761
301-0065241	2007 EXPEDITION WAGON 4 DOOR 4X4	1FMFK16547LA69551	FORD	EXPEDITION	6,970	41,822
301-0070878	2010 DRW SUPER DUTY CREW CHASSIS	1FDAW5HR3AEA82602	FORD	DRW SUPER DUTY	5,335	16,004
301-0071221	2010 CARAVAN SPORT VAN FRONT	2D4RN4DE0AR390369	DODG	CARAVAN	19,858	59,573
301-0071222	2010 CARAVAN SPORT VAN FRONT	2D4RN4DE7AR390367	DODG	CARAVAN	23,842	71,527
301-0071223	2010 CARAVAN SPORT VAN FRONT	2D4RN4DE1AR390364	DODG	CARAVAN	24,619	73,857
301-0071224	2010 CARAVAN SPORT VAN FRONT	2D4RN4DE5AR390366	DODG	CARAVAN	20,311	60,933
301-0071306	2010 CARAVAN SPORT VAN FRONT	2D4RN4DE3AR390365	DODG	CARAVAN	21,074	63,221
301-0071418	2010 FORD LGT CONVTLN 'F'	1FTEX1EW0AFD19417	FORD	LGT CONVTLN 'F'	9,125	27,375
301-0071835	2011 FORE ECONOLINE VAN	FTNE1EW5BDA12540	FORD	ECONOLINE VAN	24,355	48,710
301-0072414	2011 FORD FUSION	3FAHP0GA2BR298623	FORD	FUSION	11,352	22,703
301-0072415	2011 FORD FUSION	3FAHP0GA4BR298624	FORD	FUSION	3,591	7,182
301-0073131	2011 FORD FUSION	3FAHP0GA2BR331426	FORD	FUSION	17,511	35,021
301-0073132	2011 FORD FUSION	3FAHP0GA4BR33788	FORD	FUSION	4,822	9,644

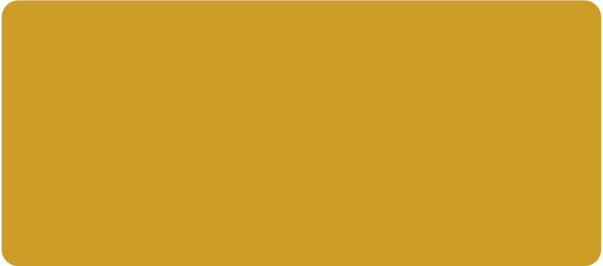
TOTAL VEHICLES (301): 34

TOTAL VEHICLES (ALL AGENCIES): 34



infant  
mortality  
rate  
6.4% ↓

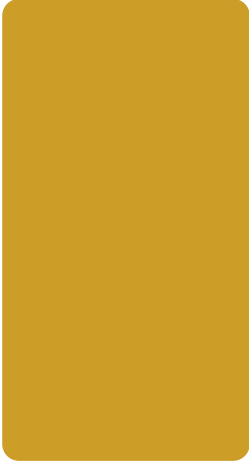
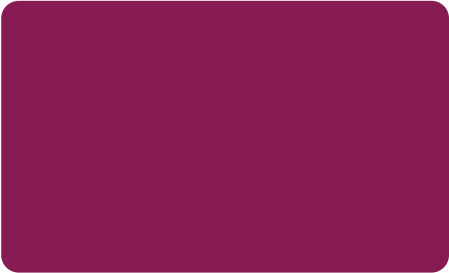
**OBESITY**  
PREVALENCE  
RATE DOWN BY .9%



current smoking  
prevalence rate



per



cardiovascular disease  
mortality rate

♥♥♥ down 1.3% ♥

