

MISSISSIPPI
STATE DEPARTMENT OF HEALTH
ANNUAL REPORT 2010

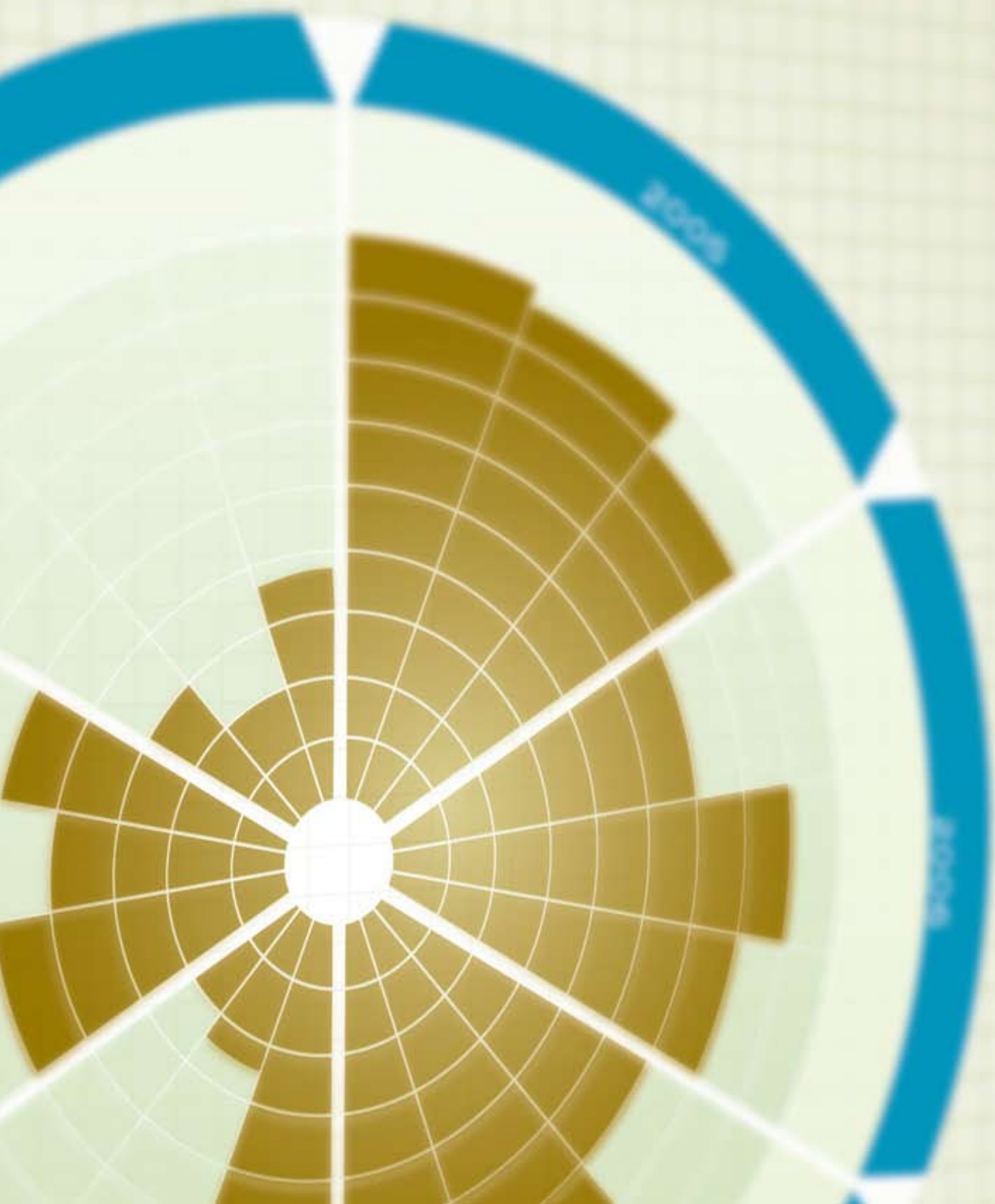
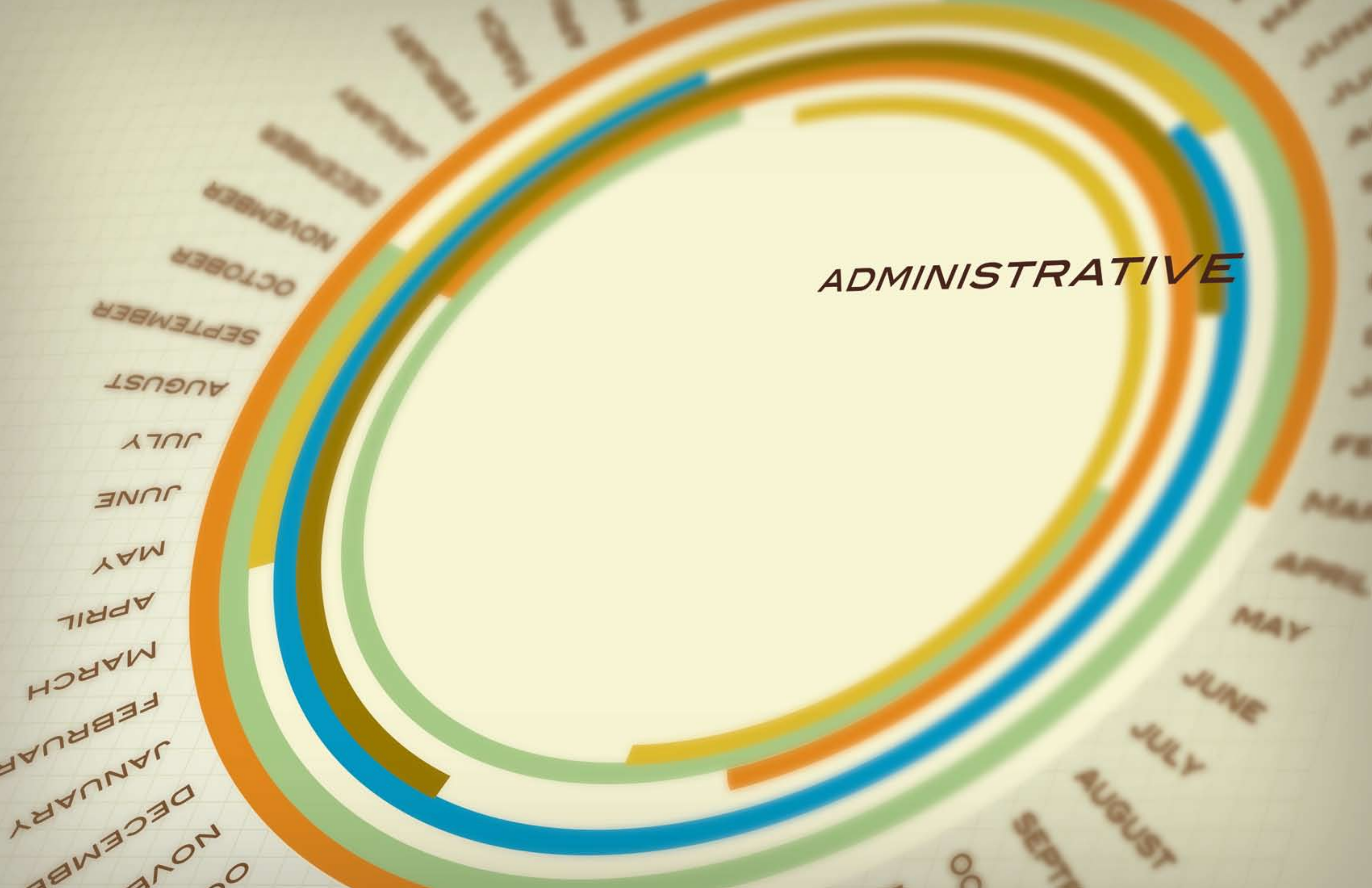


TABLE OF CONTENTS

Administrative.....	2-11
Mississippi State Board of Health Members	5
MSDH Organizational Chart.....	6
Public Health Districts.....	7
MSDH Administrative Staff.....	8
Changes in Regulations	9
Changes in State Law.....	10
Public Health Indicators	12-21
Vital Statistics.....	14
Infant Mortality.....	16
Immunizations	16
AIDS	17
Tuberculosis.....	18
West Nile Virus	19
Website Activity.....	20
Program Activities and Statistics.....	22-27
Fiscal Year 2010: Expenditures, Travel and Vehicle Reports	28-44

ADMINISTRATIVE

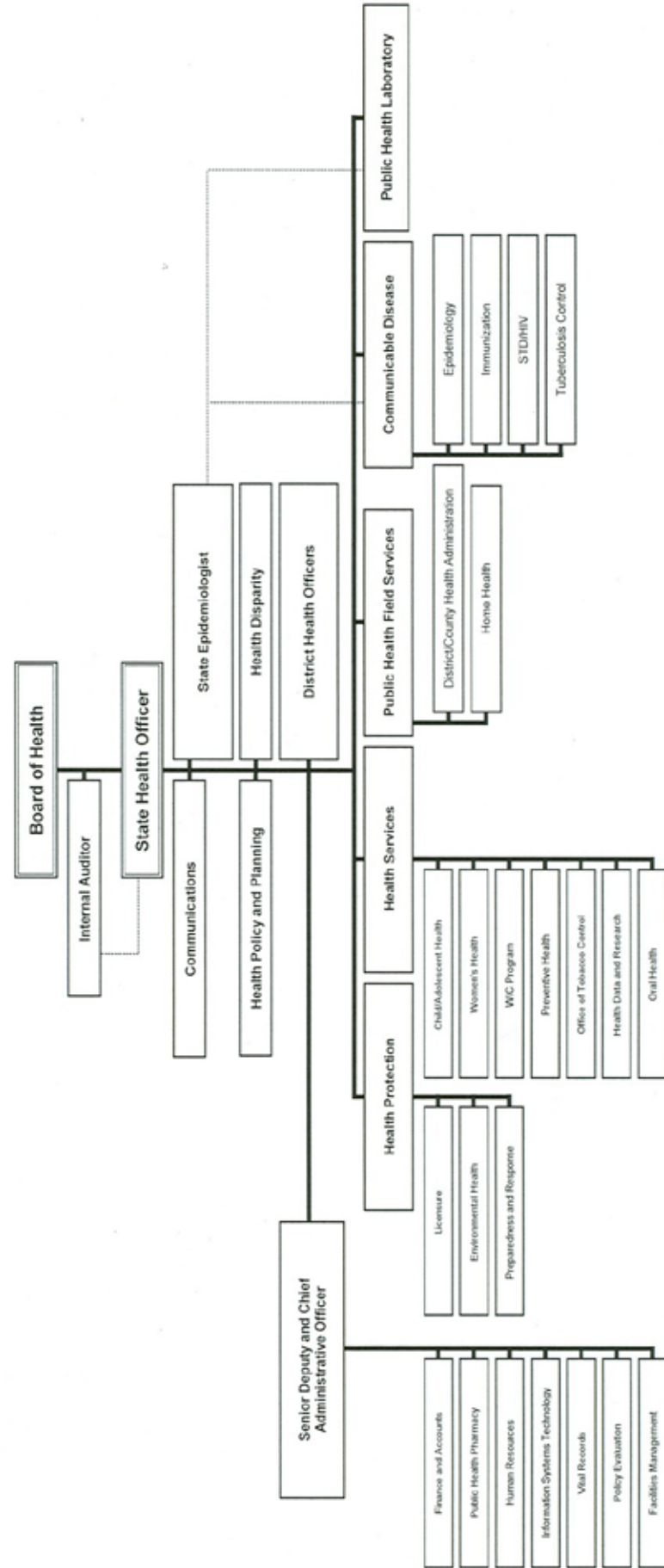


MISSISSIPPI STATE BOARD OF HEALTH

NAME	TERM EXPIRES
Elayne H. Anthony, PhD Madison, MS	June 30, 2013
Albert Randel "Randy" Hendrix, Sr., PhD Ovett, MS	June 30, 2013
J. Edward "Ed" Hill, MD, FAAFP Tupelo, MS	June 30, 2015
Lucius "Luke" M. Lampton, MD, FAAFP Magnolia, MS	June 30, 2013
Carl L. Nicholson, Jr., CPA Hattiesburg, MS	June 30, 2011
Sammie Ruth Rea, RN Brandon, MS	June 30, 2016
Ronald "Ronnie" W. Robertson, Sr. Greenwood, MS	June 30, 2011
Kelly S. Segars, Sr., MD, FAAFP, ABFP Iuka, MS	June 30, 2015
Thad Fulton Waites, MD Hattiesburg, MS	June 30, 2016
David C. Williams, MD Jackson, MS	June 30, 2011
Ellen P. Williams, RN, MSN Senatobia, MS	June 30, 2013

Agency: 0301
 FY-2011
 July 1, 2010

Mary Cleary, MD MPH
 State Health Officer



PUBLIC HEALTH DISTRICTS

Northwest Public Health District I
 Alfio Rausa, MD
 662-563-5603

Northeast Public Health District II
 Roma Taylor, MD
 662-841-9015

Delta/Hills Public Health District III
 Alfio Rausa, MD
 662-453-4563

Tombigbee Public Health District IV
 Roma Taylor, MD
 662-323-7313

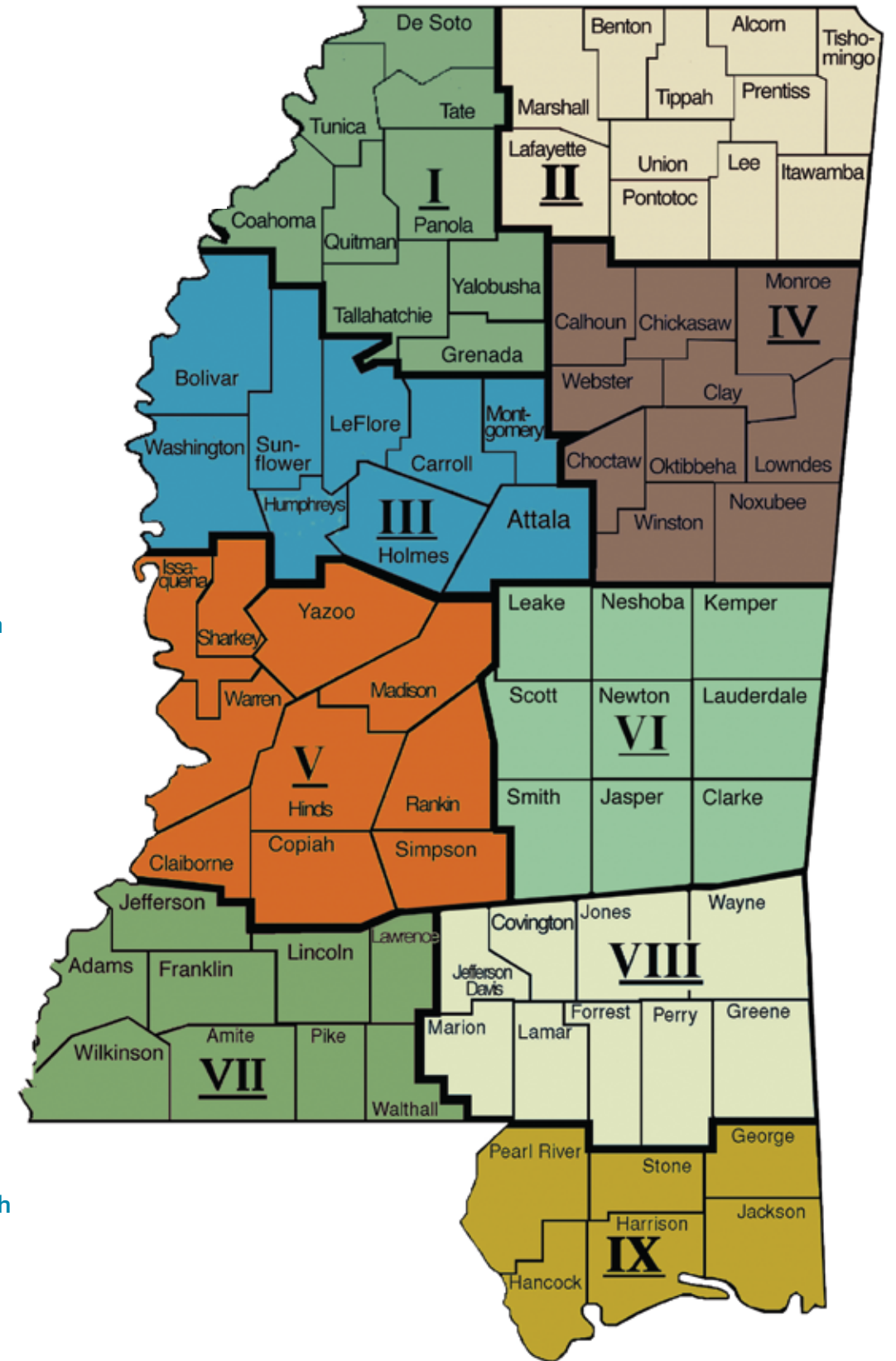
West Central Public Health District V
 Mary Gayle Armstrong, MD
 601-978-7864

East Central Public Health District VI
 Rebecca James, MD
 601-482-3171

Southwest Public Health District VII
 Thomas Dobbs, MD
 601-684-9411

Southeast Public Health District VIII
 Thomas Dobbs, MD
 601-544-6766

Coastal Plains Public Health District IX
 Robert Travnicek, MD
 228-831-5151



MSDH ADMINISTRATION

State Health Officer	Mary Currier, M.D., M.P.H.	601-576-7634
Acting State Epidemiologist	Paul E. Byers, M.D.	601-576-7725
Communicable Disease	Joy Sennett, M.H.S., Director	601-576-8012
Immunization	Vacant	601-576-7751
Tuberculosis	Mike Holcombe, M.P.P.A.	601-576-7700
STD/HIV	Vacant	601-576-7723
Communications	Liz Sharlot	601-576-7667
Health Policy and Planning	Don Eicher, J.D.	601-576-7874
Legal Counsel	Bob Fagan, J.D.	601-576-7458
Internal Audit	Sharon Nasianceno, MAccy., CPA	601-576-7458
Medical and Dental Officers		
Health Disparity Elimination	Lovetta Brown, M.D., M.P.H.	601-576-8102
District Health Officers		
District I & III	Alfio Rausa, M.D.	662-453-4563
District II & IV	J. Roma Taylor, M.D.	662-841-9015
District V	Mary Gayle Armstrong, M.D.	601-978-7864
District VI	Rebecca James, M.D.	601-482-3171
District VII & VIII	Thomas Dobbs, M.D., M.P.H.	601-544-6766
District IX	Robert Travnicek, M.D., M.P.H.	228-831-5151
Field Services	Margaret Morton, M.S.N., R.N., Director	601-576-7428
District Health Administrators		
District I	Diane W. Hargrove, M.R.P.	662-563-5603
District II	Roger Riley, M.S.	662-841-9015
District III	Diane W. Hargrove, M.R.P.	662-453-4563
District IV	Karen McPherson	662-323-7313
District V	Kevin Pearson, M.P.P.A.	601-978-7864
District VI	Kathy Posey, R.N.	601-482-3171
District VII	Tracy Byas, M.H.S.	601-684-9411
District VIII	David Caulfield	601-544-6766
District IX	Kathy Beam, M.S.	228-831-5151
Health Administration	Mike Lucius, Senior Deputy & Chief Administrative Officer	601-576-7635
Finance & Accounts	Willie Thompson	601-576-7542
Facilities & Property Management	Vacant	601-576-7635
Human Resources	Ronald P. Davis, M.B.A.	601-576-7642
Information Technology	Marc Wilson	601-576-8092
Public Health Pharmacy	Meg Pearson, Pharm.D.	601-713-3457
Policy Evaluation	Kathy Moon, M.P.P.A.	601-576-7428
Vital Records	Judy Moulder, M.H.S.	601-576-7961
Public Health Laboratory Director	Daphne Ware, Ph.D., M.S.	601-576-7582
Health Protection	Jim Craig, Director	601-576-7680
Emergency Planning & Response	Art Sharpe, J.D.	601-576-7680
Emergency Medical Services/Trauma Services	Alisa Williams	601-576-7380
Environmental Services	Tim Darnell, M.S.	601-576-7690
Licensure	Vickey Maddox, R.N.	601-364-1100
Health Services	Daniel R. Bender, M.S., Director	601-576-7472
Child & Adolescent Health	Geneva Cannon, M.H.S, R.N.	601-576-7464
Health Data & Research	Lei Zhang, Ph.D, M.B.A., M.S.	601-576-8165
Office of Tobacco Control	Roy Hart, M.P.H.	601-364-5790
Oral Health	Nicholas Mosca, D.D.S.	601-576-7500
Preventive Health	Victor Sutton, Ph.D, M.P.P.A.	601-576-7781
WIC	Kathy Burk, M.S.W., L.C.S.W.	601-987-4680
Women's Health	Louisa Denson, M.P.P.A., L.C.S.W.	601-576-7856

CHANGES IN REGULATIONS

The regulatory actions taken by the State Board of Health in FY 2010 are as follows:

July 8, 2009

Adopted changes to the Minimum Standards of Operation for Hospice.

This change was made to bring the definition of "Governing Body" in compliance with House Bill 453, 2009 Legislative Session.

Adopted changes to the Regulations Governing Individual On-Site Wastewater Disposal: Chapters 1, 16 & 17.

These changes were made to comply with changes made in State law. Specific requirements were added requiring final approval for all on-site wastewater systems prior to permanent water connection, maintenance requirements for Alternative Systems, creation of certification requirements for Professional Evaluators and Maintenance Providers, and fees for new certification programs and for certain services.

Adopted changes to the Mississippi Trauma Care Regulations.

These changes concern financial support for the trauma system, amend criteria for Level I trauma care center, Level II trauma care center, Level III trauma care center, Level IV trauma care center, ATLS requirement for physicians providing trauma care, trauma care center designation process, Mississippi Burn Care Fund, and modification to the trauma care trust fund distribution process.

Adopted the FY 2010 Mississippi State Health Plan.

Adopted changes to the Certificate of Need Review Manual.

These changes were made to clarify when a CON application is available for public inspection, to allow greater archive of records, clarify the definition of "Determination of Reviewability," clarify statutory exemption of veterans homes from CON process, clarify that Notices of Intent are valid for 180 days, clarify incomplete application and define "shell application" as not meeting requirement, and clarify requirement of Determination of Reviewability.

October 21, 2009

Adopted changes to the Certificate of Need Review Manual.

These changes were made to revise and clarify the Single Specialty Ambulatory Surgery Facility Application for Determination of Non-Reviewability.

January 13, 2010

Adopted changes to the Regulations Governing Licensure Speech-Language Pathologists and Audiologists.

This change would allow 100% of continuing education credit to be earned through online and/or home study courses.

Adopted changes to the Mississippi EMS: The Law, Rules and Regulations.

These changes require all licensed ambulance services, medical control plans mandated to follow entire state trauma plan instead of certain sections to enhance effectiveness of statewide trauma care system. Additionally, certain glossary changes were made to reflect expansion of terms to include those contained in the statewide trauma care system documents.

April 14, 2010

Adopted changes to the Regulations Governing Licensure of Professional Art Therapists.

This change removed the maximum number of times a provisional license can be renewed.

Adopted changes to the Mississippi Trauma Care Regulations.

These changes address a change in Trauma Care Trust Fund distribution model to include distribution to Burn Centers, review of hospital pre-assessment survey by Trauma Care Regions, procedure to collect delinquent payments to Trauma Care Trust Fund, procedure to change designation of Trauma Centers, incorporate Essential and Desirable Chart in applicable chapters, and update MTAC members.

Adopted changes to the Boiler and Pressure Vessel Safety Regulations.

These changes were necessary due to changes in State law that raised certificate fees and exempted certain types of air tanks from inspection.

[Adopted changes to the Mississippi Primary Drinking Water Regulation.](#)

These various changes were made to obtain primacy for the Ground Water Rule, the Long Term 2 (LT2) Enhances Surface Water Treatment Rule, Stage 2 Disinfection Byproducts Rule, and the Short Term Revisions to the Lead & Copper Rule as required by the Environmental Protection Agency (EPA). Also, clarifications and redundant sections were removed and/or relocated in Regulation as requested by EPA.

[Adopted changes to the Rules and Regulations Governing the Newborn Screening Program and Birth Defects Registry.](#)

These changes were made to allow Department the right to determine cost for infants screened and increase the number of advisory committee members not to exceed 13 members.

CHANGES IN STATE LAW

[Legislative Updates: 2010 Regular Session](#)

House Bill 211

This bill reenacts the sections of law that create the reconstituted State Board of Health and establish the position, powers and duties of the Executive Officer of the State Department of Health. It extends the date of the repealer of these sections to July 1, 2014.

In addition, the bill provides the Mississippi State Department of Health (MSDH) with the following additional powers and duties:

Authorizes MSDH to issue a license to the Alexander Milne Home for Women, Inc.;

Authorizes MSDH to issue a license to an existing home health agency for the transfer of a county from that agency to another existing home health agency; and assess a fee for the application review;

Authorizes MSDH to assess an additional fee for reviewing applications for certificates of need;

Authorizes MSDH to extend and renew any certificate of need that has expired, and assess a fee for the application review;

Authorizes MSDH to contract with any party for the purpose of providing needed medical services at no charge to persons who have no form of health insurance and are unable to pay for services;

Authorizes MSDH to immediately revoke the license and require closure of any institution for the aged or infirm to protect the health and safety of the residents of the institution;

Authorizes MSDH to require the temporary detainment of individuals for disease control purposes based upon violation of any order of the State Health Officer;

Authorizes MSDH to establish the WISEWOMAN/WISEMAN pilot program if funds become available;

Requires MSDH to make a report to the Legislature with recommendations for definitions and standards relating to the licensure of a "personal care home," "assisted living facility," "adult day care facility" and "psychiatric supervised housing facility."

Renames the "Mary D. Osborne Building" the "Dr. Alton B. Cobb – Mary D. Osborne State Public Health Building."

House Bill 1192

This bill directs the State Board of Health to adopt guidelines applicable to physician, nurse practitioner and physician assistant practices in Mississippi that incorporate the principles of the patient-centered medical home.

Senate Bill 2646

This bill creates a state employee wellness program and charges MSDH with the responsibility of creating and developing a model statewide wellness program to improve the health and wellness of state employees. State agencies are required to designate an employee to serve as the wellness liaison between the agency and the statewide wellness coordinator. The statewide wellness coordinator is authorized to assist a state agency in establishing employee wellness demonstration projects that incorporate best practices for encouraging employee participation and the achievement of wellness benefits.

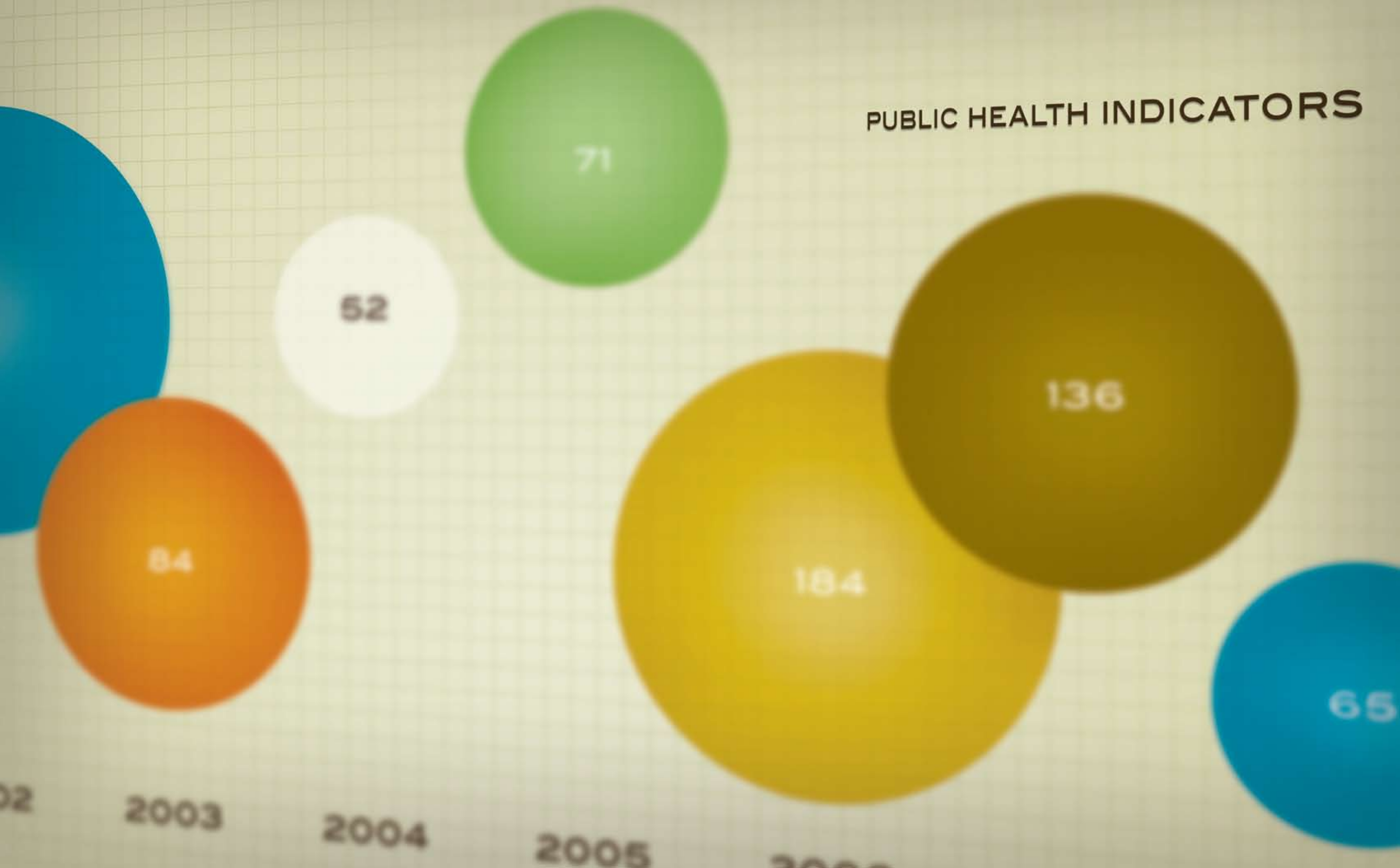
Senate Bill 2524

This bill names the Public Health Laboratory currently under construction in Jackson the "Dr. F.E. 'Ed' Thompson, Jr. Mississippi State Public Health Laboratory."

Senate Bill 2644

This bill prohibits smoking in any indoor public facility and within 100 feet of any outdoor facility during any time persons less than 18 years of age are engaged in an organized athletic event at the facility, except in a designated area separate from the fields of activity.

PUBLIC HEALTH INDICATORS



STATUS OF SELECTED HEALTH INDICATORS FOR MISSISSIPPI, 2000-2009			
Year	Infant Mortality Rate ¹	Cardiovascular Disease Mortality Rate ²	Teen Pregnancy Rate ³
2000	10.6	324.4	42.9
2001	10.5	315.1	38.9
2002	10.3	314.1	38.2
2003	10.7	300.6	36.3
2004	9.7	284.1	36.4
2005	11.4	293.9	35.5
2006	10.5	276.3	41.0
2007	10.1	274.8	43.0
2008	9.9	271.2	40.6
2009	10.0	253.6	39.0
U.S. Rate (year)	6.8 (2007)	204.3 (2007)	Not Available
MS Rank ⁴	50	50	

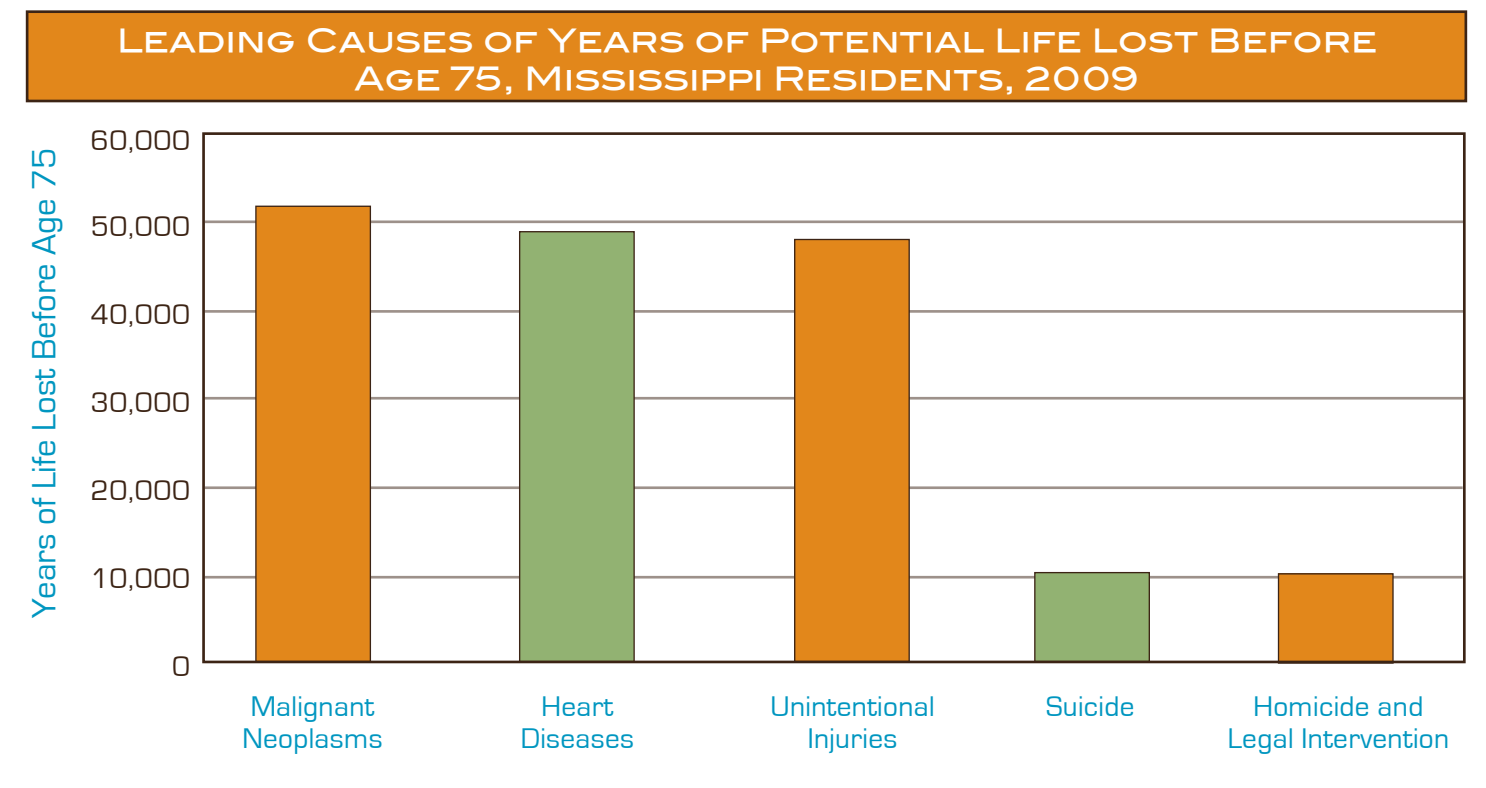
¹Infant deaths per 1,000 live births

²Deaths per 100,000 population

³Births + fetal deaths + abortions per 1,000 population 10-19

⁴Rank: 1=best/50=worst

Source: Mississippi State Department of Health, Bureau of Public Health Statistics, Vital Statistics



Source: Mississippi State Department of Health, Bureau of Public Health Statistics, Vital Statistics

STATUS OF SELECTED PREVALENCE INDICATORS FOR MISSISSIPPI, 2000-2009			
Year	Obesity Prevalence Rate ¹	Diabetes Prevalence Rate ¹	Current Smoking Prevalence Rate ¹
2000	25.0	7.6	23.5
2001	25.4	9.3	25.4
2002	26.8	8.6	27.4
2003	27.0	11.0	25.6
2004	29.5	9.6	24.6
2005	30.9	9.7	23.7
2006	31.5	10.9	25.1
2007	32.6	11.1	23.9
2008	33.4	11.3	22.7
2009	35.4	11.6	23.3
U.S. Rate (year)	26.9 (2009)	8.3 (2009)	17.9 (2009)
MS Rank ²	50	49	48

¹Percent

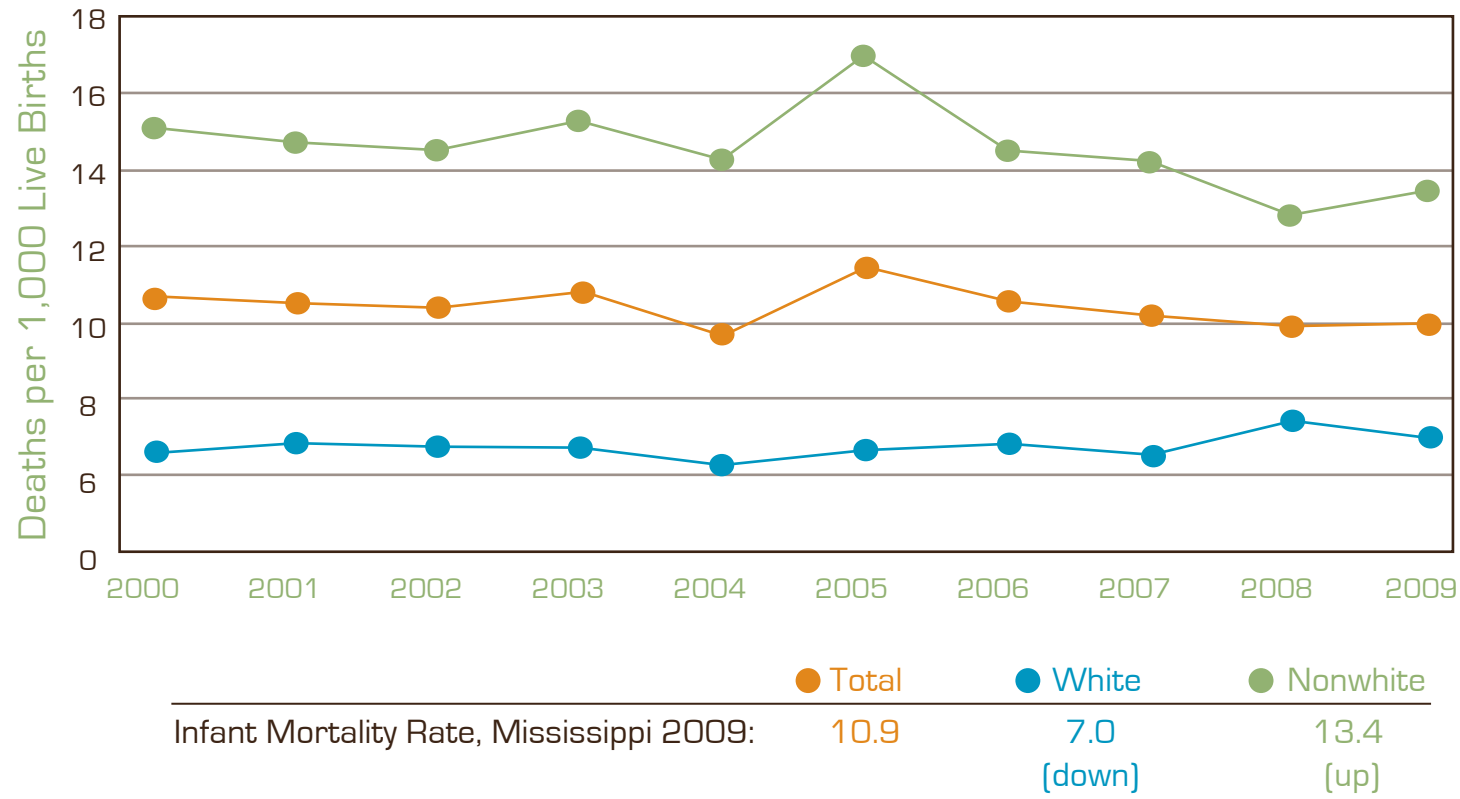
²Rank: 1=best/50=worst

Source: Mississippi State Department of Health, Bureau of Public Health Statistics, Behavioral Risk Factor Surveillance System

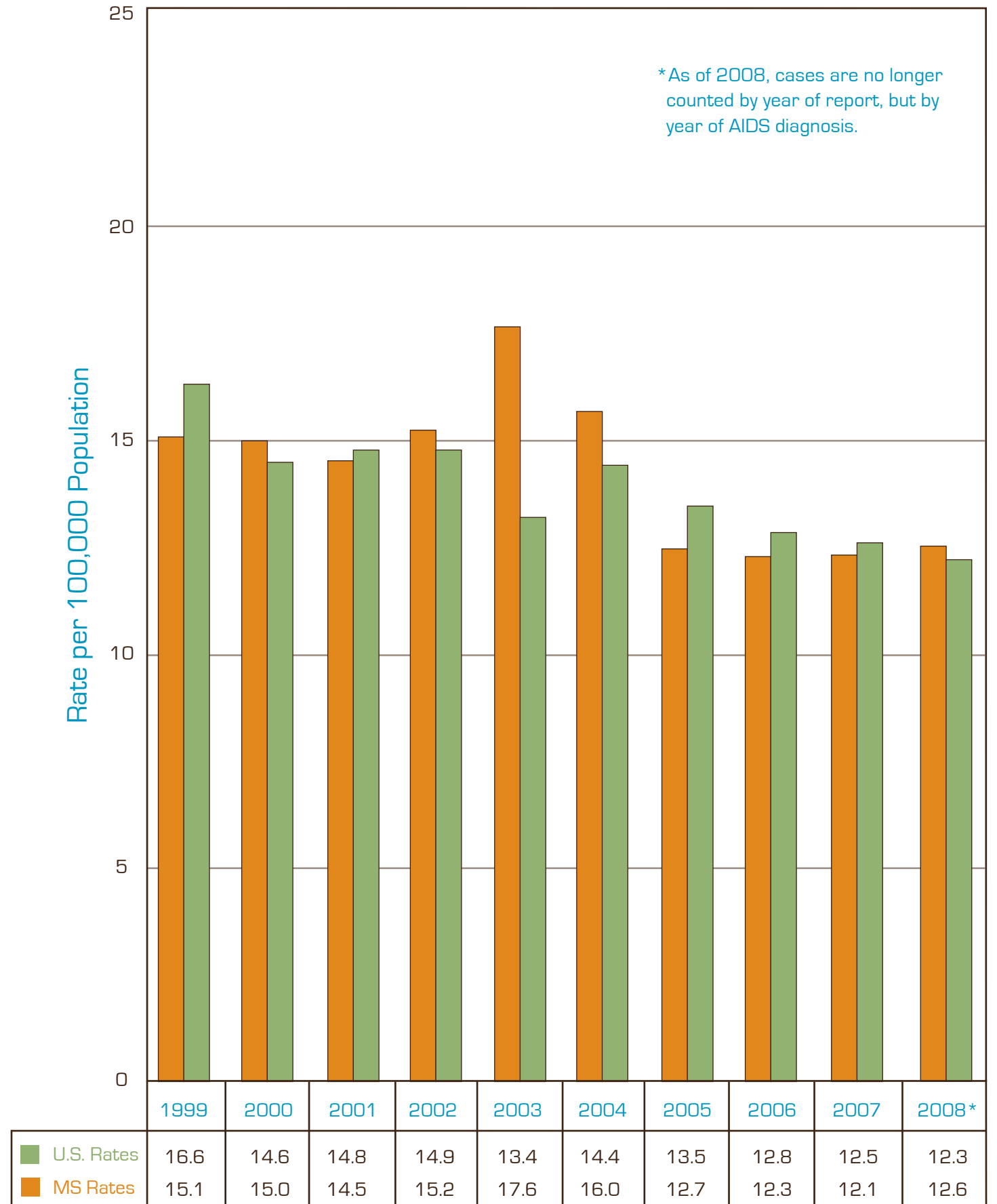
LEADING CAUSES OF YEARS OF POTENTIAL LIFE LOST BEFORE AGE 75, MISSISSIPPI RESIDENTS, 2000-2009					
Year	Malignant Neoplasms	Heart Diseases	Unintentional Injuries	Suicide	Homicide and Legal Intervention
2000	50,532	51,909	50,565	9,482	13,322
2001	51,709	50,474	48,135	10,337	13,473
2002	52,180	53,160	49,985	11,166	12,124
2003	52,980	52,386	48,940	9,971	11,946
2004	53,248	51,654	51,173	10,728	11,515
2005	53,876	54,376	55,156	11,550	9,514
2006	54,377	51,681	56,122	9,278	12,328
2007	52,427	52,930	55,342	11,721	11,400
2008	54,315	50,478	47,571	11,568	13,293
2009	52,071	48,098	47,324	10,724	10,358

Source: Mississippi State Department of Health, Bureau of Public Health Statistics, Vital Statistics

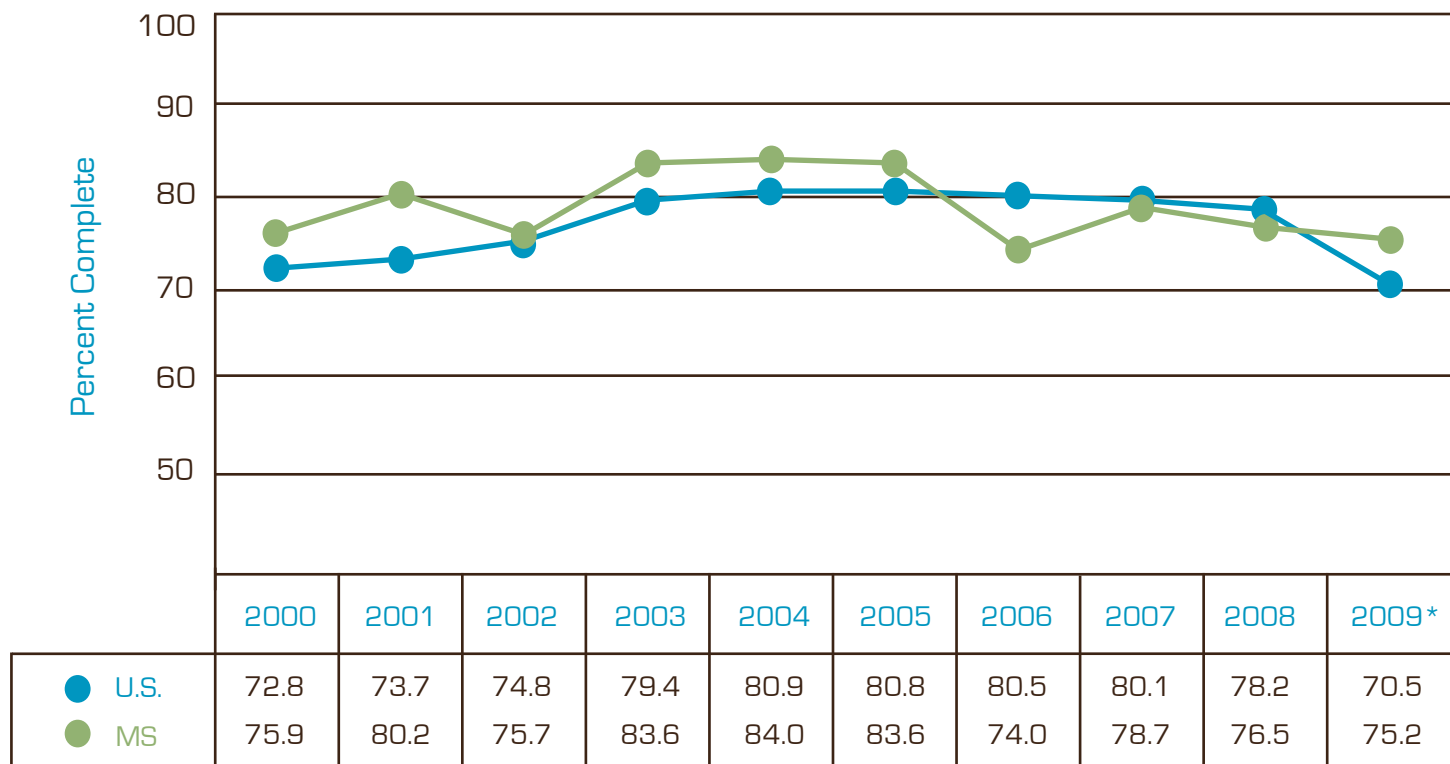
INFANT MORTALITY IN MISSISSIPPI, 2000-2009



AIDS RATES BY YEAR UNITED STATES AND MISSISSIPPI, 1999-2008

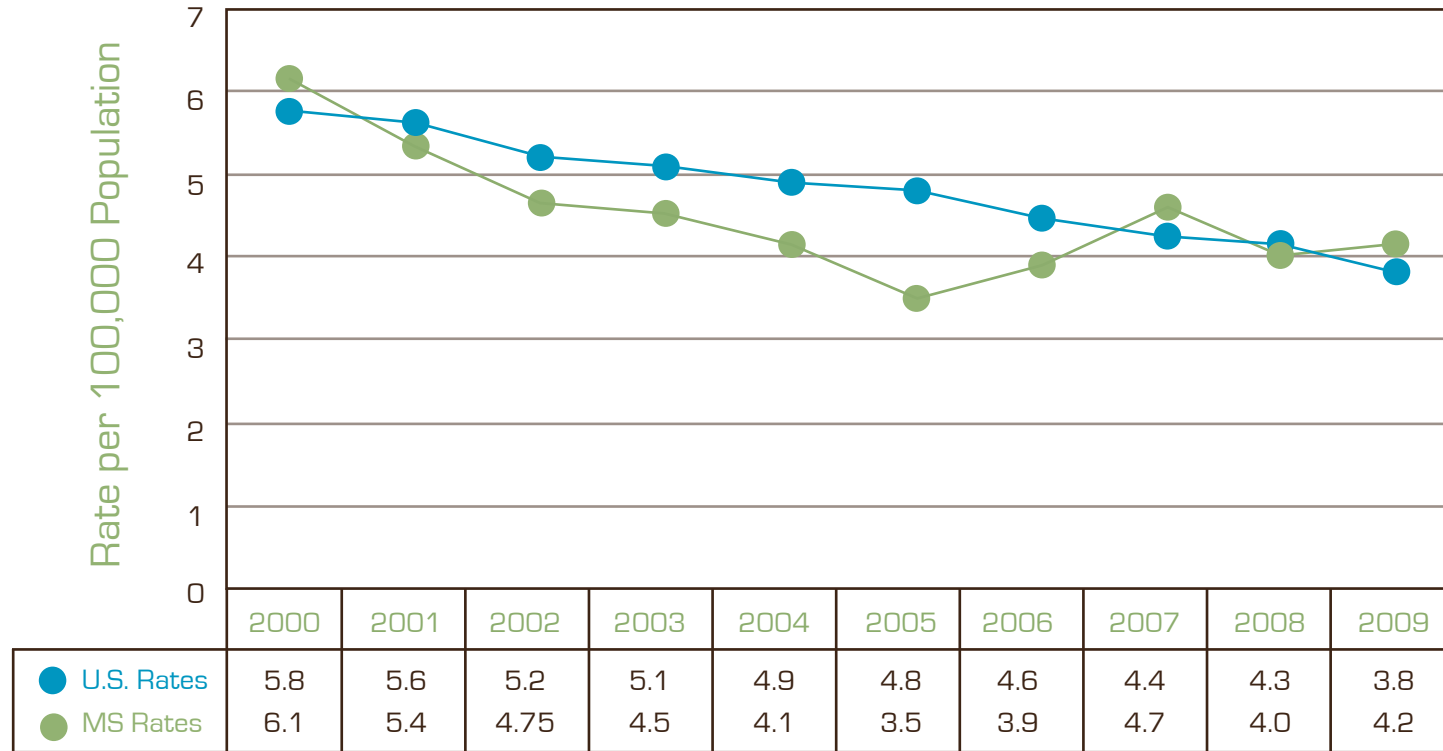


VACCINATION COVERAGE AMONG CHILDREN 19-35 MONTHS, BY YEAR, MISSISSIPPI AND UNITED STATES

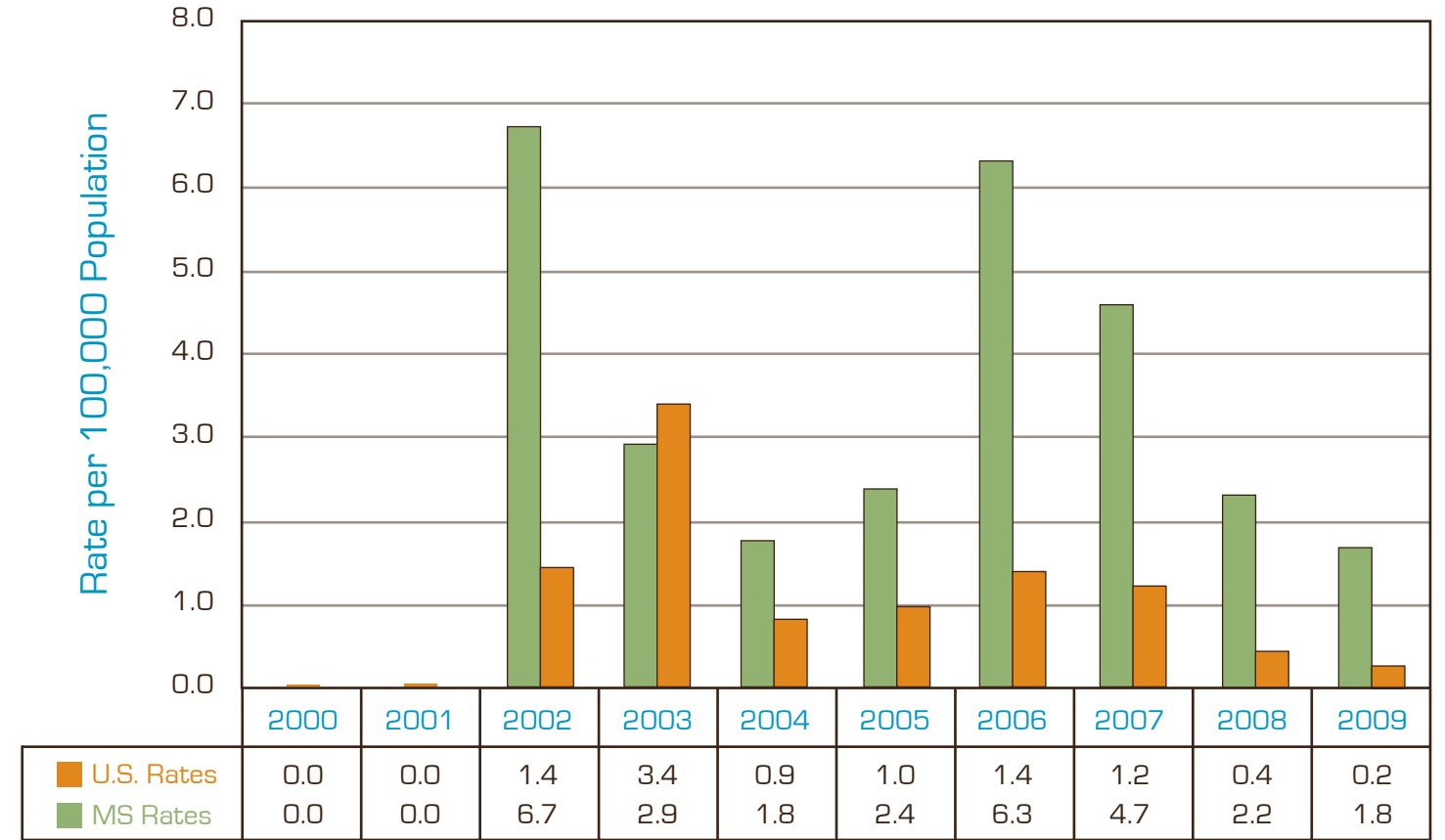


CDC - National Immunization Survey
 4:3:1:3:3 (4 DTaP, 3 IPV, 1 MMR, 3 Hib, 3 HepB) for 2000-2008 • 4:3:1:0:3:1:4 (4 DTaP, 3 IPV, 1 MMR, 0 Hib, 3 HepB, 1 Var, 4 PCV) for 2009
 *Hib vaccine excluded due to shortage

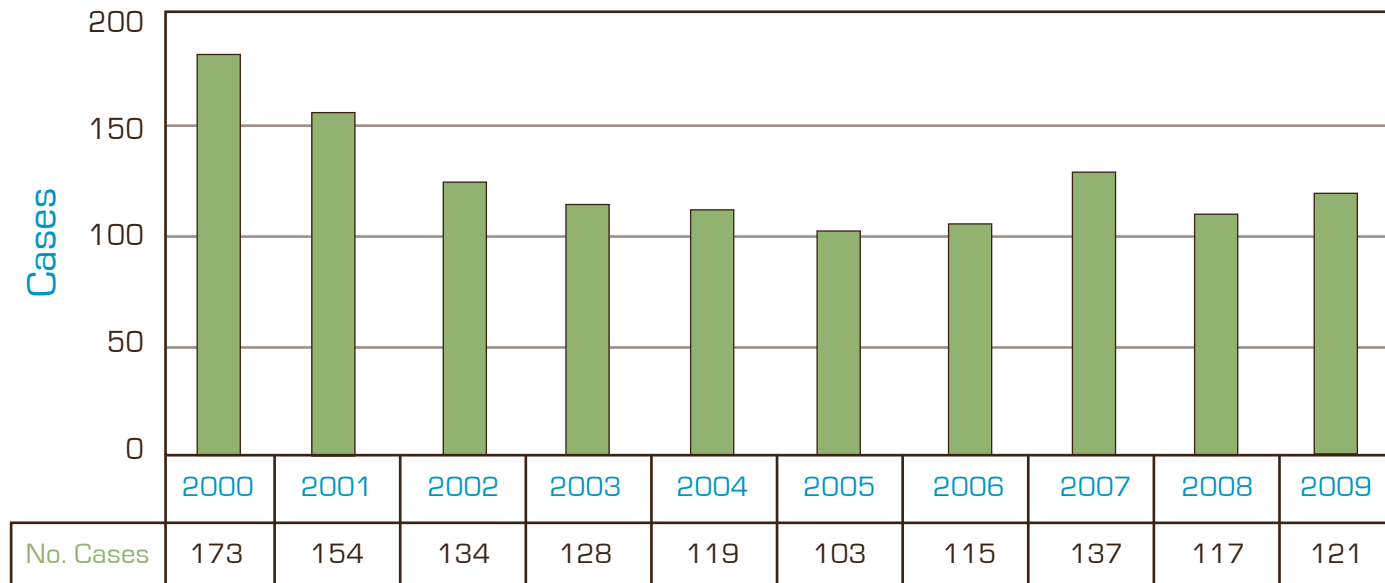
TUBERCULOSIS CASE RATES BY YEAR, UNITED STATES AND MISSISSIPPI, 2000-2009



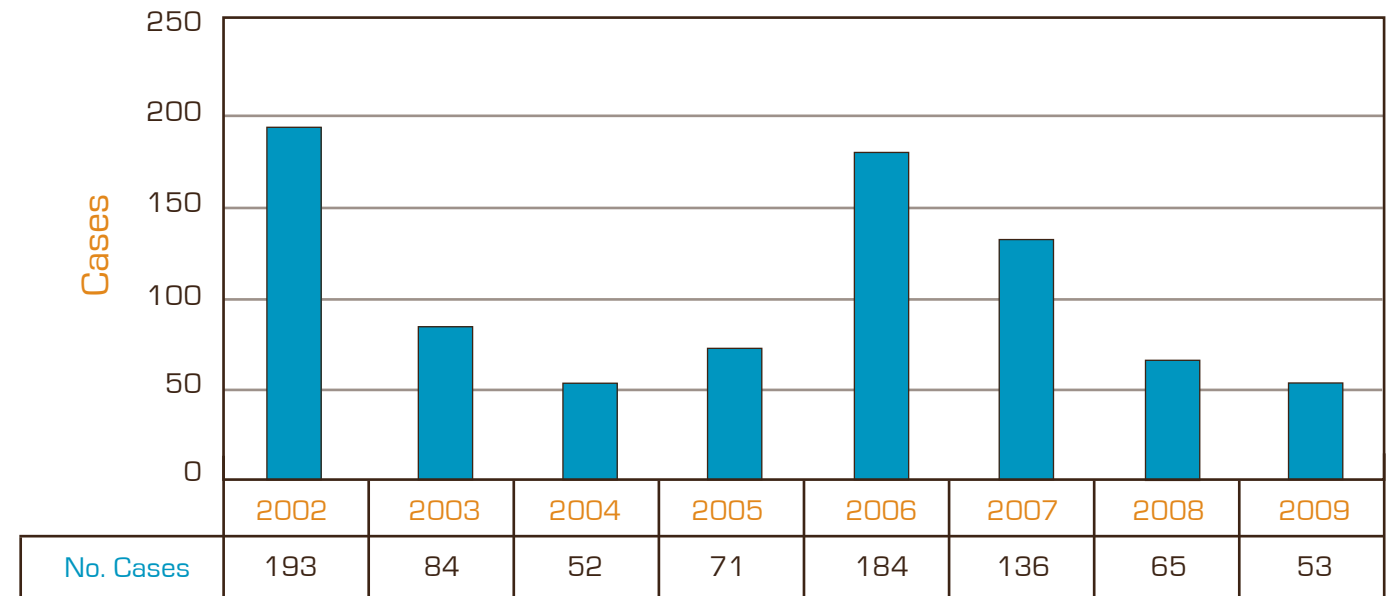
WEST NILE VIRUS CASE RATES, UNITED STATES AND MISSISSIPPI, 2000-2009



TUBERCULOSIS CASES BY YEAR, MISSISSIPPI, 2000-2009

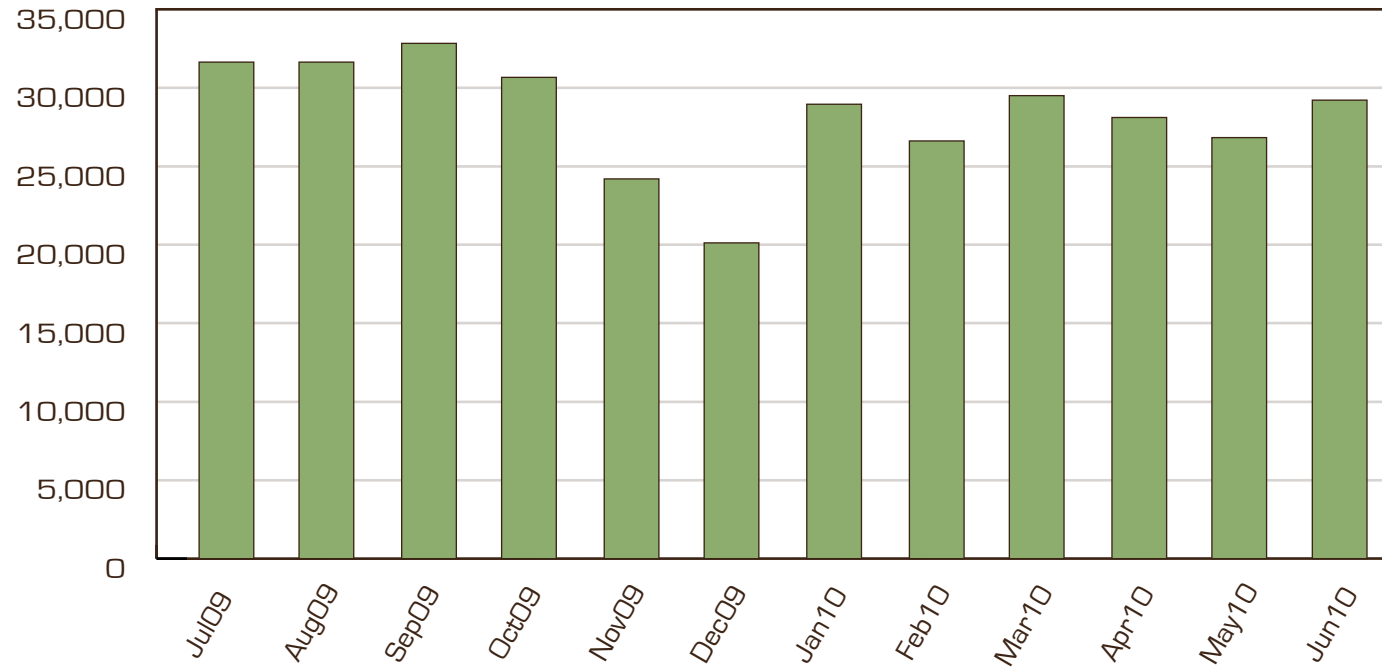


WEST NILE VIRUS CASES, MISSISSIPPI, 2002-2009



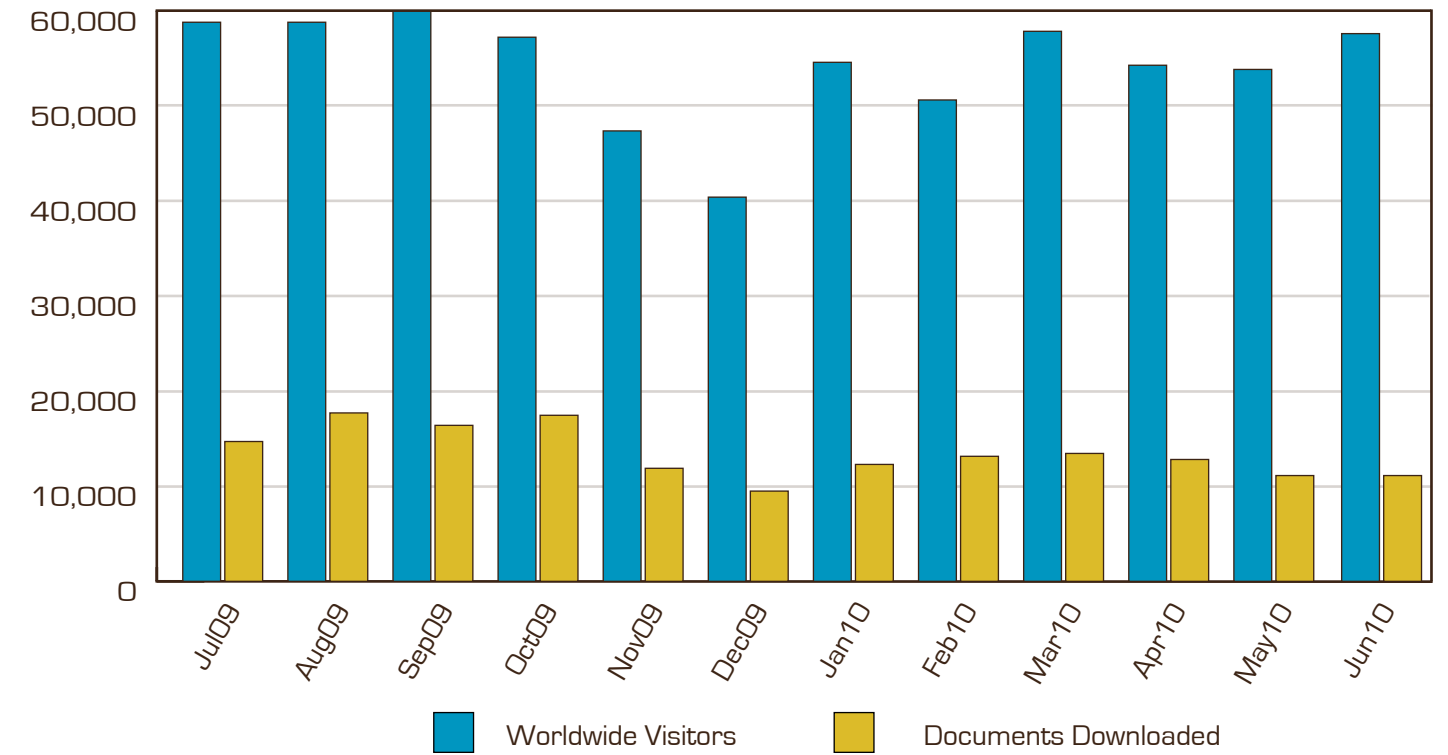
MSDH WEBSITE: IN-STATE VISITORS

September had Record Number of Website Visitors: 32,831
 Website Averages 28,358 In-State Visitors Monthly
 Total 340,301 In-State Website Visitors for Year



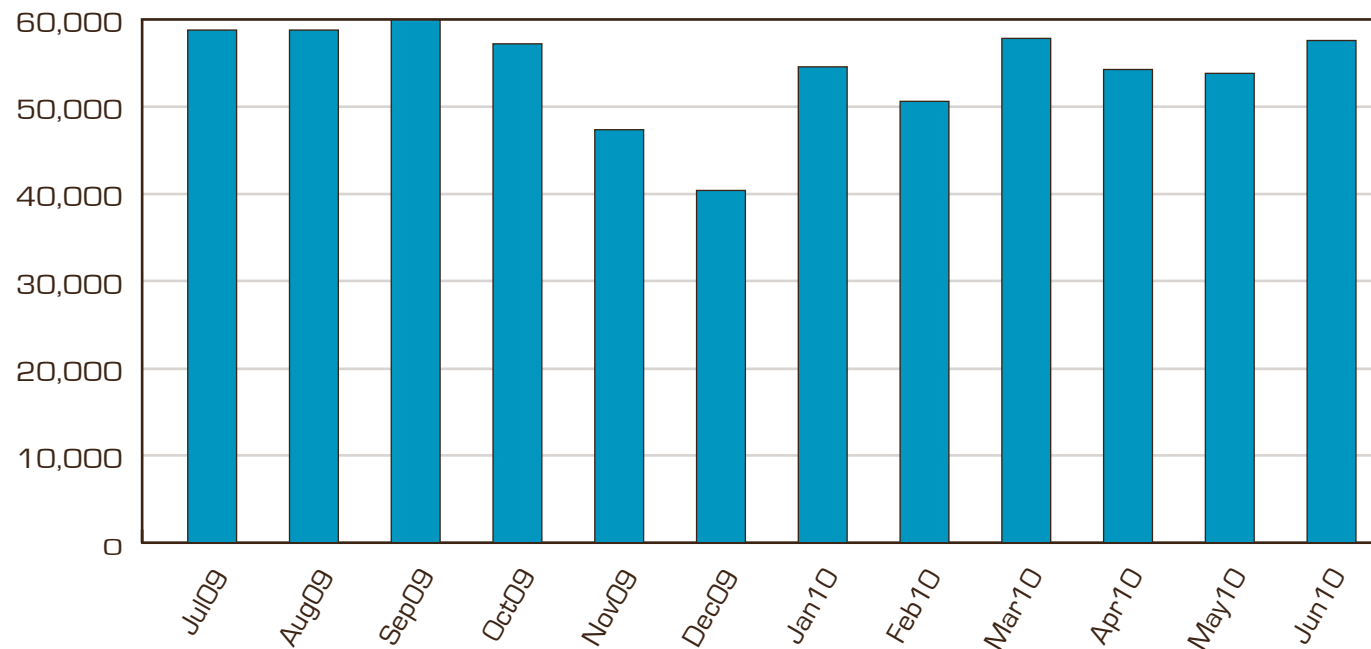
MSDH WEBSITE: DOCUMENTS DOWNLOADED

For the Year: 161,568 Documents were Downloaded from MSDH Website
 Average 13,464 Documents per Month

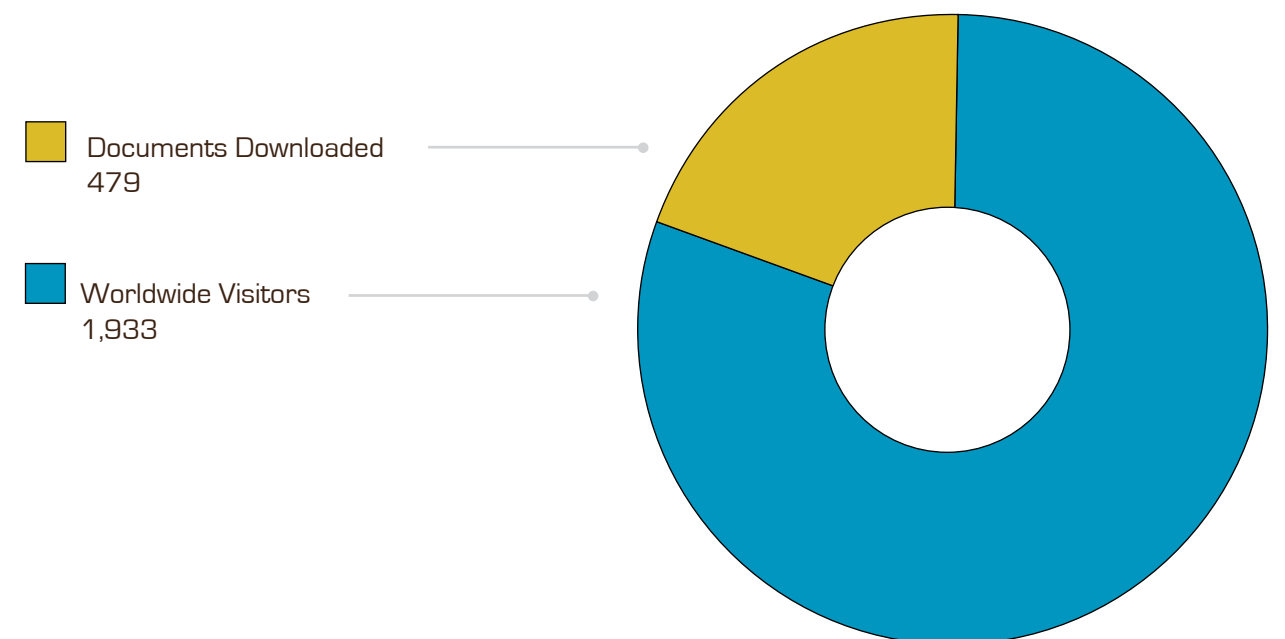


MSDH WEBSITE: WORLDWIDE VISITORS

MSDH Website had 651,131 Worldwide Visitors During Year
 Average: 54,261 Worldwide Visitors per Month
 Highest Month: September 2009 with 59,932 Visitors due to H1N1 Swine Flu



MSDH WEBSITE: DAILY AVERAGES FY2010





PROGRAM ACTIVITIES AND STATISTICS

MSDH PROGRAM ACTIVITIES AND STATISTICS

Clients, Facilities, Certificates and Inspections
Fiscal Year 2010 Report of Activities by Program

Community Health Services

Diabetic patients served	16
Diabetic monitoring visits	48
Hypertensive patients served.....	455
Hypertensive treatment visits	829
Immunization doses administered*	453,064
HIV cases identified**	610
*Does not include VFC Provider immunization	
**HIV cases are for calendar year 2008	

Personal Health Services

Child Health

Children (ages birth-21) encounters	51,267
Newborns screened for phenylketonuria, hypothyroidism, galactosemia, hemoglobinopathies, congenital adrenal hyperplasia, and other genetic disorders.....	40,376

Children's Medical Program

Specialty/Clinic sessions per year	255
Patients enrolled in program	3,058

Home Health

Patients served	636
Registered nurse visits	5,339
Other visits	64,251

WIC – Special Supplemental Nutrition Program for Women, Infants and Children

(Average monthly participation)

Women	20,450
Infants	29,288
Children	54,190

Women's Health

Pregnant women served	7,344
High-risk mothers and infants served through Perinatal High Risk Management /Infants Services System (PHRM)	27,869
Women screened for breast or cervical cancer (as of 6/30/10)	7,118
Women and men screened for osteoporosis (CY 2009)	1,585

Reproductive Health (Family Planning)

Adult patients served	61,652
Teens	17,476

Oral Health

Population added through water fluoridation program	25,565
Population on recruited systems (pending activation)	51,083
Second-grade children served through dental sealant program	283

Preventive Health

Child safety car seats distributed and installed	4,031
Residential smoke detector alarms installed	2,331

Tobacco Control

Number of unduplicated individuals who have completed all the necessary steps to participate in OTC-funded tobacco cessation interventions:	
Tobacco Quitline	3,922
ACT Centers	3,582
Number of counties with Tobacco-Free Coalitions implementing evidence-based programs consistent with CDC best practice guidelines:	82

Health Protection

Environmental Health

Boilers and pressure vessels inspected	15,117
Food establishments permitted	12,307
Inspections of food establishments	39,748
Wastewater complaints investigated	5,169
Sewage disposal inspections and soil/site evaluations	14,271
Dairy farm inspections	783
Dairy samples collected for evaluation	2,112

Radiological Health and Safety

Radioactive materials licenses inspected	163
Healing Arts X-ray tubes inspected	2,025
Mammography units inspected	110
Environmental samples collected and analyzed for radioactivity around the Grand Gulf Nuclear Station	968
Evaluations and/or screenings for Radon (indoor)	2,619

Emergency Medical Services

Ambulance permits issued	584
Emergency medical technicians certified/recertified	2,135
EMS drivers certified/recertified	2,534
Emergency services licensed/relicensed	110

Licensure

Hospitals – accredited (licensed)	72
Hospitals – non-accredited (licensed)	48
Nursing facilities (licensed)	202
Home health agencies (licensed)	54
Intermediate care facilities for the mentally retarded (licensed)	14
Psychiatric Residential Treatment Facilities (licensed)	7
Personal Care Homes (licensed)	175
Hospices (licensed) (includes branches/satellites)	165
Ambulatory surgical facilities (licensed) (includes single specialty)	65
Community mental health centers (certified only)	9
Rural health clinics (certified only)	164
End-stage renal disease facilities (certified only)	73
Comprehensive outpatient rehabilitation facilities (certified only)	3
Portable x-ray (certified only)	7
Outpatient physical therapy facilities (certified only)	32
Abortion facilities (licensed)	1
CLIA laboratories (excluding VA labs) (certified only)	2,366
Utilization Review Agents	121
Health facilities surveyed	921
Health facility complaints investigated	600
Number of inspections of youth camps	84
Child residential care homes monitored per Notification Act X	12
Number of general/renewal inspections of daycare facilities	4,281
Daycare complaints investigated	639
Licenses issued for athletic trainers, audiologists, dietitians, hearing aid specialists, occupational therapists and occupational therapy assistants, respiratory care practitioners, speech-language pathologists and professional art therapists	5,411
Total number of registered or certified radiation technologists, audiology aides, eye enucleators, speech language pathology aides, tattoo artists, body piercers and hair braiders	4,633

Planning and Resource Development

Certificate of Need (CON) applications reviewed	33
Declaratory rulings issued	118
Capital Expenditures Authorized through Issued CONs	\$289,439,543

Rural Health

Number of technical assistance/information requests processed	245
Number of critical access hospitals assisted	29

Primary Care Development

Health Professional Shortage Area designation ratio reviews conducted:	
Primary Care	84
Dental	84
Mental Health (by catchment area)	16
Health Professional Shortage Areas designations approved	443
J-1 physicians placed	69
Patients served through Mississippi Qualified Health Center grant program	67,896

Communications

News releases produced	114
Web page visits	517,877
News release distribution – media outreach	12,832
Total number of media inquiries	785
Requests for public records (submittals and responses)	151
Agency forms created and revised	290
Tobacco control coverage (TV and newspaper)	199
Major news coverage	4,042
Major news coverage generated (TV)	2,320
Major news coverage generated (newspaper)	1,722

Vital Statistics

Calendar Year 2009

Births	41,978
Deaths	27,710
Marriages	14,201
Divorces	12,541
Fetal deaths	402
Induced terminations	2,438
Adoptions	1,130

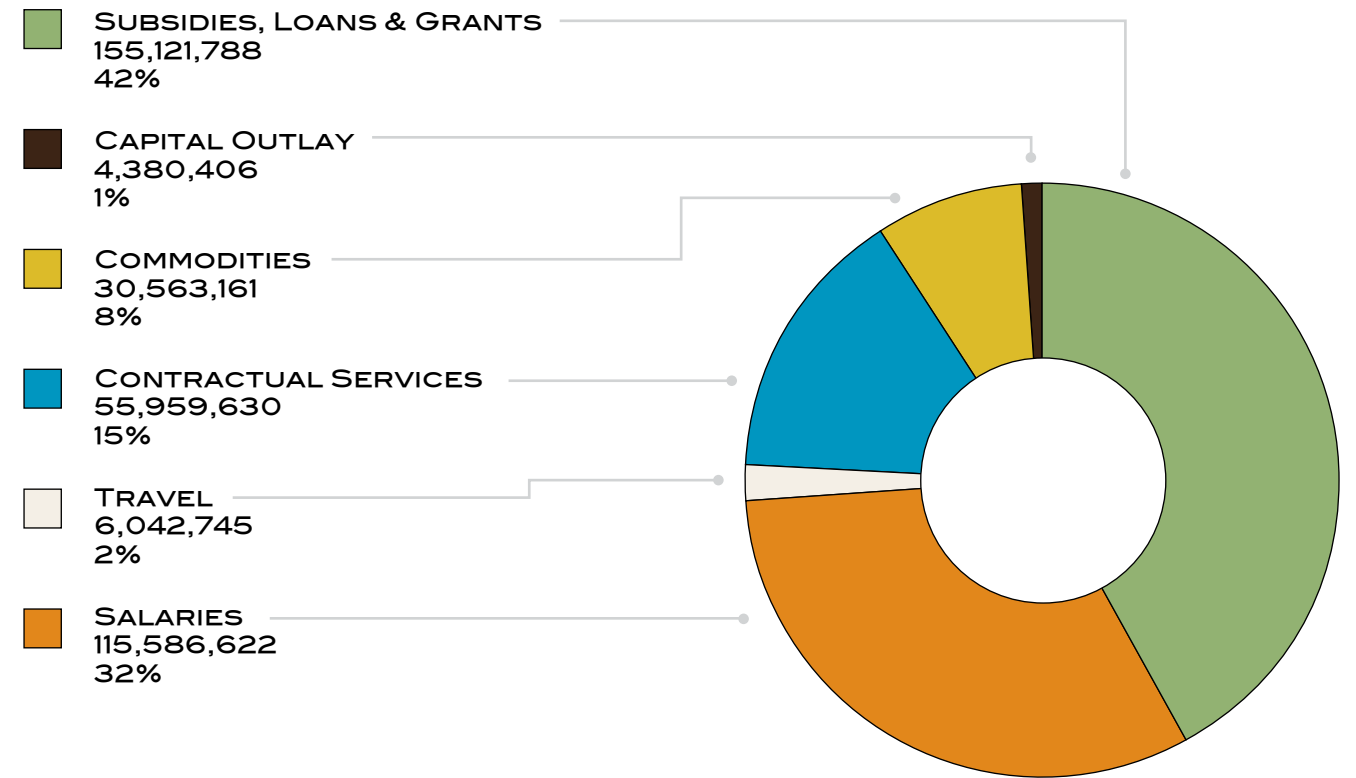
Fiscal Year 2010

Certified copies of vital records issued	425,225
Answered calls to the Office of Health Statistics	105,766

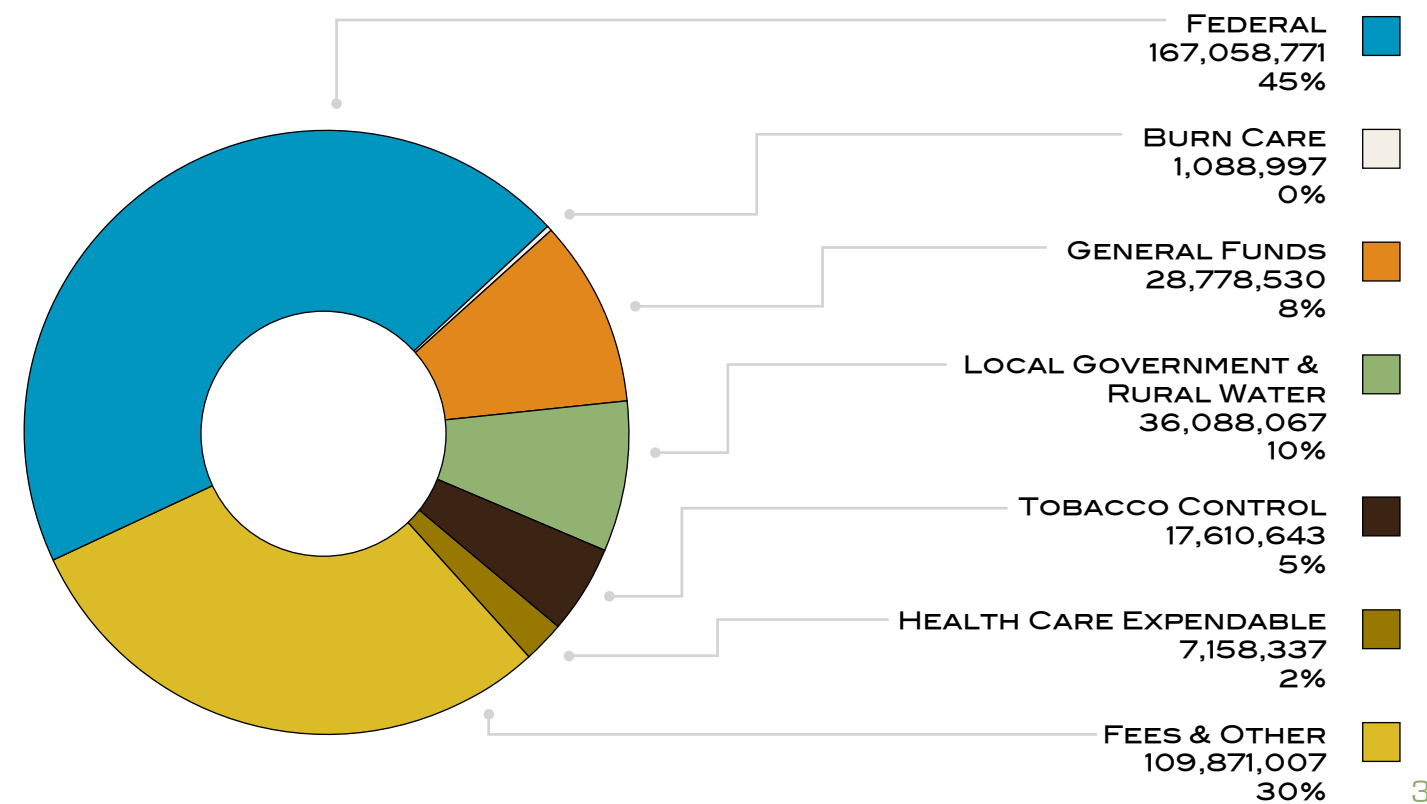


**FISCAL YEAR 2010:
TRAVEL AND VEHICLE REPORTS**

FISCAL YEAR 2010 EXPENDITURES BY MAJOR CATEGORY



FUNDING SOURCES FOR FISCAL YEAR 2010 EXPENDITURES



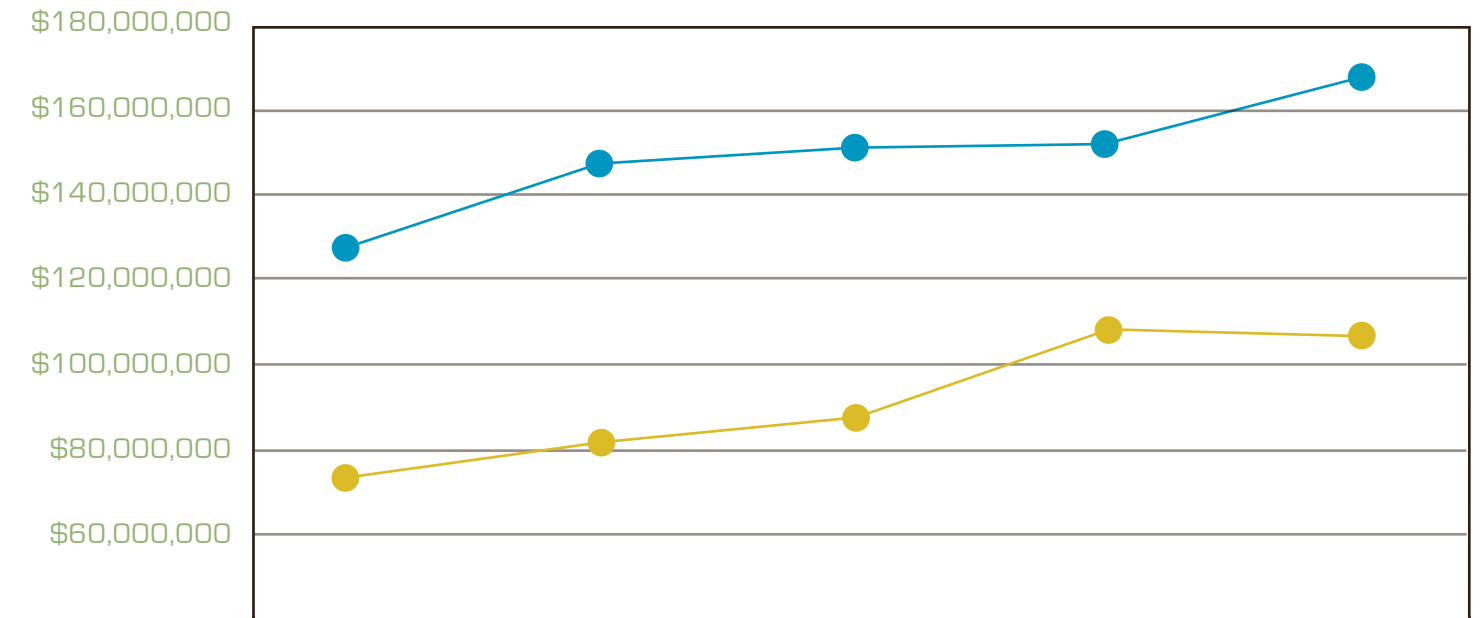
EXPENDITURE FUNDING SOURCES FOR FISCAL YEARS 2006–2010

	2006	2007	2008	2009	2010
General Funds ¹	\$ 26,963,010	\$ 32,664,735	\$ 41,833,515	\$ 31,076,047	\$ 28,778,530
Federal	126,363,074	146,943,065	149,328,041	152,073,405	167,058,771
Fees and Other	71,079,496	80,111,063	84,778,231	112,225,242	109,871,007
Health Care Expendable	11,506,417	9,859,513	7,158,337	7,158,337	7,158,337
Tobacco Control ²	2,567,386	1,258,331	17,217,711	16,049,641	17,610,643
Local Government & Rural Water	8,666,536	10,163,303	9,739,423	14,009,178	36,088,067
Burn Care	12,563			478,500	1,088,997
Total	\$247,158,482	\$281,000,010	\$300,315,835	\$333,070,350	\$367,654,352

¹In FY 2008 the general fund amount included \$4,930,201 from a deficit appropriation awarded by the Legislature to fund the purchase of antiviral drugs.

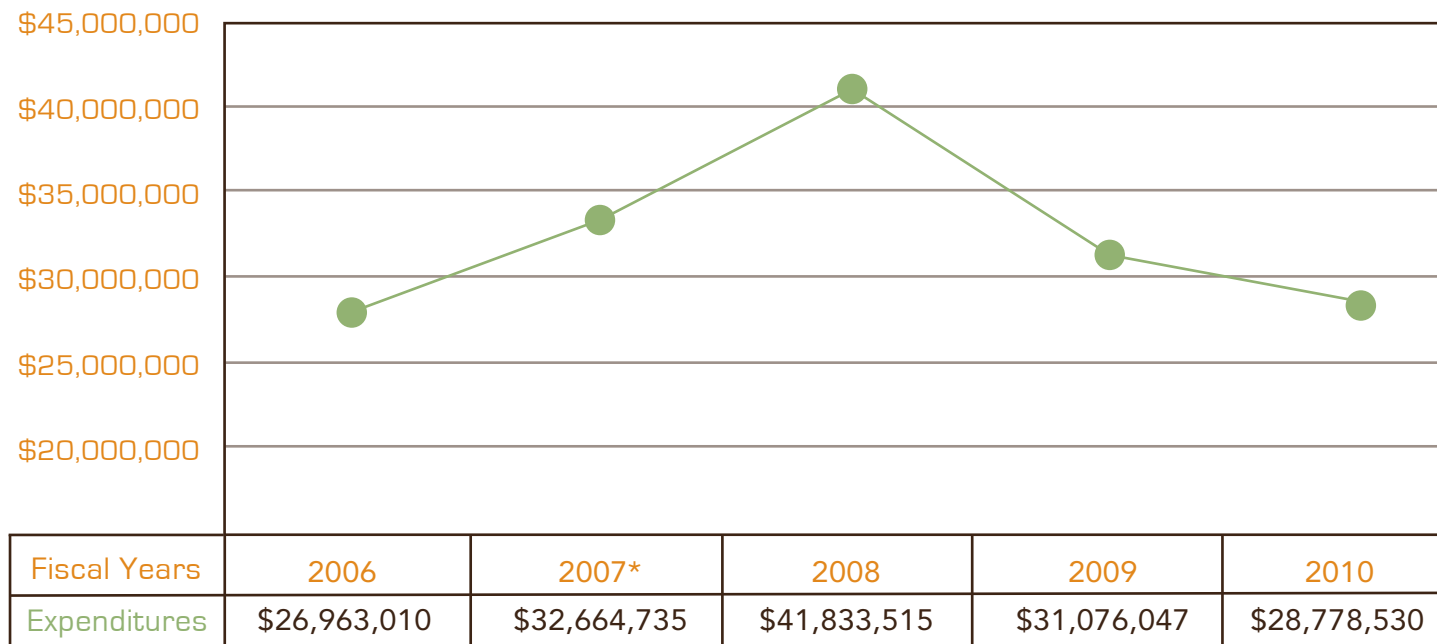
²Prior to FY 2008 this funding source was known as "Tobacco Pilot." In FY 2007 the amount was funded with a deficit appropriation awarded by the Legislature to fund the school nurse program.

SPECIAL FUND EXPENDITURES



Fiscal Years	2006	2007	2008	2009	2010
Federal	\$126,363,074	\$146,943,065	\$149,328,041	\$152,073,405	\$167,058,771
Fees and Other	\$71,079,496	\$80,111,063	\$84,778,231	\$112,225,242	\$109,871,007

GENERAL FUND EXPENDITURES



*The fiscal year 2007 amount was revised to include \$1,258,331 from a general fund deficit appropriation approved by the Legislature to fund the school nurse program.

EXPENDITURES BY MAJOR CATEGORY FOR FISCAL YEARS 2006–2010

	2006	2007	2008	2009	2010
Salaries	\$ 92,682,882	\$ 97,500,563	\$105,011,221	\$111,647,064	\$115,586,622
Travel	4,840,344	4,952,239	5,730,593	5,631,587	6,042,745
Contractual Services	43,978,407	43,754,984	45,266,418	47,115,362	55,959,630
Commodities	56,790,001	61,519,736	76,311,980	30,910,820	30,563,161
Capital Outlay	2,814,403	2,387,534	6,400,373	4,025,159	4,213,579
Vehicles		26,306			166,827
Wireless Comm. Devices		1,850			
Subsidies, Loans & Grants	46,052,445	70,856,798	71,334,673	133,740,358	155,121,788
Total	\$247,158,482	\$281,000,010	\$310,055,258	\$333,070,350	\$367,654,352

EXPENDITURES BY PROGRAM FOR FISCAL YEARS 2006-2010					
	2006	2007	2008	2009	2010
Chronic Illness	\$ 7,978,888	\$ 8,526,187	\$ 8,715,758	\$ 10,129,361	\$ 10,818,474
Disease Prevention	37,713,652	43,979,893	46,977,664	52,629,803	54,539,808
Environmental Health	14,213,666	15,610,890	17,881,253	17,967,789	18,203,929
Health Care Planning & Licensure	32,918,185	46,909,537	28,329,504	41,932,896	41,996,160
Maternal & Child Health	111,080,601	121,946,988	140,419,736	146,624,869	150,138,825
Support Services	19,215,812	22,453,498	19,057,250	19,305,801	21,575,888
Tobacco Control	2,567,386	1,258,331	17,217,711	16,053,878	17,610,643
Bioterrorism	12,791,193	10,151,383	16,786,758	13,938,275	15,593,561
Local Government & Rural Water	8,666,536	10,163,303	9,739,423	14,009,178	36,088,067
Burn Care	12,563			478,500	1,088,997
Pandemic Flu Antiviral Drugs			4,930,201		
Total	\$247,158,482	\$281,000,010	\$310,055,258	\$333,070,350	\$367,654,352

Name	Place	Purpose	Cost	Source
ADCOX ASHLEY	BETHESDA, MD	ANNUAL EMSC PROGRAM MEETING	\$1,988.00	Federal
ADCOX ASHLEY	CHICAGO, IL	IMPROVING EMSC PERFORMANCE MEASURE SURVEY RESPONSE	\$1,282.00	Federal
AINSWORTH PAMELA J	ATLANTA, GA	PUBLIC HEALTH PREPAREDNESS SUMMIT 2010	\$772.00	Federal
AINSWORTH PAMELA J	MONTGOMERY, AL	PATIENT TRACKING TABLE TOP EXERCISE	\$133.00	Federal
ALDRIDGE KARA MICHELLE MAGEE	ALBUQUERQUE, NM	NATL RURAL RECURITMENT & RETENTION NETWORK CONF	\$1,425.00	Federal
ALDRIDGE KARA MICHELLE MAGEE	ATLANTA, GA	NATIONAL HEALTH SERVICE CORPS FORUM	\$723.00	St Support Spec
ALDRIDGE KARA MICHELLE MAGEE	ROCKVILLE, MD	STATE PRIMARY CARE OFFICES ANNUAL MEETING	\$1,589.00	St Support Spec
ALDRIDGE KARA MICHELLE MAGEE	TAMPA, FL	NATL HEALTH SERVICE ANNUAL SCHOLAR CONFERENCE	\$1,236.00	Federal
ALDRIDGE KARA MICHELLE MAGEE	TAMPA, FL	NATL SERVICE, HEALTH CORPS LOANS REPAYMENT CONF	\$931.00	St Support Spec
ALLARD CYNTHIA	ATLANTA, GA	DECENNIAL INTERNATIONAL CONFERENCE ON HAI 2010	\$1,307.00	St Support Spec
ALLEN HARVEY KEITH	ALEXANDRIA, VA	ASSN OF STATE DRINKING WATER ADMIN MEETING	\$1,226.00	Federal
ALLEN HARVEY KEITH	ATLANTA, GA	EPA/STATE WATER DIRECTORS MEETING	\$930.00	Federal
ALLEN HARVEY KEITH	GUNTERVILLE, AL	EPA STATE WATER DIRECTOR'S MEETING	\$300.00	Federal
ALLEN HARVEY KEITH	PORTLAND, OR	ASDWA ANNUAL CONFERENCE	\$1,587.00	Federal
BARBER KARL	BATON ROUGE, LA	FRMAC TECHNICAL TRAINING	\$135.00	Other
BARNER SONYA D	ATLANTA, GA	HPLC TRAINING	\$510.00	Federal
BASSETT CARLA	ATLANTA, GA	REGION IV HEAD START ASSN ANNUAL TRAINING CONFEREN	\$1,262.00	Federal
BASSETT CARLA	MURFREESBORO, TN	CDC WATER FLUORIDATION:PRINCIPLE & PRACTICE COURSE	\$353.00	Federal
BASSETT CARLA	ST, LOUIS, MO	NATIONAL ORAL HEALTH CONFERENCE 2010	\$1,330.00	Federal
BATEASTE-SUTTON ZUNDRAD	ATLANTA, GA	AEA/CDC SUMMER EVAL INSTITUTE	\$1,306.00	Federal
BATEASTE-SUTTON ZUNDRAD	CHICAGO, IL	ASTHMA PARTNERS MEETING- CDC	\$1,325.00	Federal
BEEMAN STEPHEN KENN	CLANTON, AL	SE PEDIATRIC DISASTER SURGE RESPONSE NETWORK	\$319.00	Federal
BEEMAN STEPHEN KENN	CLANTON, AL	SE REIONAL PEDIATRIC DISASTER SURGE NETWORK	\$302.00	Federal
BEEMAN STEPHEN KENN	MONTGOMERY, AL	SOUTH CENTRAL FOR PUBLIC HEALTH PREPAREDNESS	\$350.00	Federal
BEEMAN STEPHEN KENN	NASHVILLE, TN	PLANNING WORKSHOP FOR SE REGIONAL PEDIATRIC DIS	\$409.00	Federal
BENDER DANIEL R	ATLANTA, GA	CDC REVERSE SITE VISIT	\$691.00	Federal
BENDER DANIEL R	ATLANTA, GA	ANNUAL MCH BLOCK GRANT REVIEW	\$556.00	Federal
BENDER DANIEL R	PHILADELPHIA, PA	ANNUAL APHA CONFERENCE	\$1,576.00	Federal
BENDER DANIEL R	WASHINGTON, DC	MATERNAL/CHILD HEALTH CONF	\$1,526.00	Federal
BENDER DANIEL R	WASHINGTON, DC	MCH PARTNERSHIP MEETING	\$858.00	Federal
BILBRO AUGUSTA N	WASHINGTON, DC	NATIONAL FORUM FOR HEART DISEASE & STROKE PREVENTI	\$1,598.00	Federal
BISH CONNIE L	ATLANTA, GA	EIS ANNUAL CONFERENCE	\$1,213.00	St Support Spec
BISH CONNIE L	CHAPEL HILL, NC	RNDMU WORKSHOP AND FAMILY PLANNING MEETING	\$689.00	Federal
BISH CONNIE L	CHICAGO, IL	MCH EPI TRAINING	\$1,606.00	Federal
BISH CONNIE L	PHILADELPHIA, PA	ANNUAL APHA CONFERENCE	\$1,515.00	Federal
BISH CONNIE L	WASHINGTON, DC	MCH SECTION MID YEAR MEETING OF APHA	\$1,358.00	Federal
BISH CONNIE L	WASHINGTON, DC	MATERNAL/CHILD HEALTH CONF	\$1,526.00	Federal
BISH CONNIE L	WASHINGTON, DC	OBESITY SOCIETY ANNUAL SCIENTIFIC MEETING	\$1,347.00	Federal
BOMAR SANDRA CAROL	ATLANTA, GA	PUBLIC HEALTH PREPAREDNESS SUMMIT 2010	\$622.00	Federal
BOMAR SANDRA CAROL	MEMPHIS, TN	MEMPHIS SNS CRI TECHNICAL ASSISTANCE	\$373.00	Federal
BRADLEY DARLENE	ATLANTA, GA	MOLECULAR METHODS FOR PUBLIC HEALTH LABORATORY	\$1,299.00	Federal
BRANTLEY CHRISTI C	INDIANAPOLIS, IN	ASDWA/EPA DATA MANG USER CONF	\$1,965.00	Other
BRANTLEY DANIEL MILLER	BATON ROUGE, LA	RIVER BEND STATION INGESTION PHASE EXERCISE	\$230.00	Other
BRENSON MICHELLDA LATRICE	TAMPA, FL	ACHIEVE ACTION INSTITUTE	\$675.00	Federal
BRITTON ROMELLE	JACKSONVILLE, FL	ASSN OF BD OF CERT ANNUAL CONF	\$1,614.00	Federal
BROWN ANTHONY	JEFFERSON CITY, MO	WIC SPIRIT SYSTEM	\$1,551.00	Federal
BROWN KIMALESHA TRAMAIN	SOUTH LAKE TAHOE, CA	CLEARING THE AIR:INSTITUTE FOR POLICY ADV	\$1,213.00	Other
BROWN LOVETTA	NEW ORLEANS, LA	COMMUNITY CATALYST HEALTH EQUITY CONFERENCE	\$550.00	Other
BROWN LOVETTA	WASHINGTON, DC	PUB HEALTH ASOC ANNUAL MEETING	\$2,841.00	Other
BRUCE CHARLENE W	GATLINBURG, TN	ADDOSS FALL ED CONF	\$1,149.00	State
BRYANT CEDRIC GEREALD	PHILADELPHIA, PA	NATL MALE FAMILY PLANNING & REPRODUCTIVE HLTH SER	\$679.00	Federal
BURK KATHY GIBSON	ATLANTIC CITY, NJ	NATL ASS OF FARMER'S MARKET NUTRITION PROGRAMS	\$1,289.00	Federal
BURK KATHY GIBSON	MILWAUKEE, WI	NATL WIC ASSN EDUCATION & NETWORKING CONFERENCE	\$1,541.00	Federal
BYAS TRACY CARLTON	NEW ORLEANS, LA	SOUTH CENTRAL PUBLIC HEALTH LEADERSHIP INSTITUTE	\$511.00	State

Name	Place	Purpose	Cost	Source
BYAS TRACY CARLTON	ORANGE BEACH, AL	SOUTH CENTRAL PUBLIC HEALTH LEADERSHIP INSTITUTE	\$320.00	State
CALVERT MATTHEW J	BOSTON, MA	ORION RHAPSODY USER GROUP NORTH AMERICA	\$1,266.00	Other
CALVERT MATTHEW J	SAN FRANCISCO, CA	ORION RHAPSODY USER GROUP	\$1,075.00	Federal
CANNON GENEVA	ATLANTA, GA	ANNUAL MCH BLOCK GRANT REVIEW	\$432.00	Federal
CANNON GENEVA	WASHINGTON, DC	MCH PARTNERSHIP MEETING	\$1,235.00	Federal
CARLISLE KATHY L	SAN DIEGO, CA	END STAGE RENAL DISEASE BASIC TECHNICAL TRNG	\$1,758.00	Federal
CARRENA NICHOLAS SR	ATLANTA, GA	VACCINE UNIVERSITY 2010	\$2,008.00	Federal
CARSON JIMMY L	NEWPORT, RI	NAT CONF ON RADIATION CONTROL	\$2,196.00	Other
CARSON THOMAS SCOTT	WASHINGTON, DC	SAC ACCESS ADVOCATES LEADERSHIP COUNCIL	\$523.00	Federal
CARTER JASMINE N	CHICAGO, IL	EARLY HEARING DETECTION & INTERVENTION CONFERENCE	\$1,035.00	Federal
CARTER LELA A	ATLANTA, GA	USDA FOOD & NUTRITION SERVICES APD TRAINING	\$426.00	Federal
CARTER LELA A	JEFFERSON CITY, MO	WIC SPIRIT SYSTEM	\$945.00	Federal
CARTER LELA A	LITTLE ROCK, AR	TEAM VISIT WIC SPIRIT	\$464.00	Federal
CASTLE ANGELA S	NEW ORLEANS, LA	SOUTH CENTRAL PUBLIC HEALTH LEADERSHIP INSTITUTE	\$527.00	Other
CASTLE ANGELA S	ORANGE BEACH, AL	SOUTH CENTRAL PUBLIC HEALTH LEADERSHIP INSTITUTE	\$383.00	Other
CHAMBLEE TAMMY B	ARLINGTON, VA	ASTHO H1NI AFTER ACTION WORKSHOP	\$998.00	Federal
CHANEY JONATHAN MAX	CLANTON, AL	SE REGIONAL PEDIATRIC DISASTER SURGE RESPONSE	\$435.00	Federal
CHANEY JONATHAN MAX	CLANTON, AL	SE REGIONAL PEDIATRIC DISASTER SURGE NETWORK	\$508.00	Federal
CHANEY JONATHAN MAX	NASHVILLE, TN	PLANNING WORKSHOP FOR SE REGIONAL PEDIATRIC DIS	\$835.00	Federal
CHASE LAUREE MCDONALD	MADISON WI	CMS BASIC ICF/MR SURVEYOR TRAINING COURSE	\$1,456.00	Federal
CLARK BRENDA R	MYRTLE BEACH, SC	FDA SE REGION RETAIL FOOD SAFETY SEMINAR	\$668.00	Other
CLARK DUANE LEROY	COLUMBUS, OH	NATIONAL BOARD INSURANCE COMMISSION	\$365.00	Other
CLARK TAMMY R	SANDESTIN, FL	MS ACADEMY OF FAMILY PHYSICIANS 2009 MEETING	\$1,710.00	Other
COKER DONALD L JR	LAFAYETTE, LA	HSEEP L-146	\$547.00	Federal
COKER DONALD L JR	WASHINGTON, DC	HEALTH AND HUMAN SERVICE SOC TRAINING	\$2,603.00	Federal
COLEMAN CONSTANCE	BIRMINGHAM, AL	AL EARLY INTERVENTION CONF	\$310.00	St Support Spec
COOK CHARITY KILSPINIA	PORTLAND, OR	ASDWA ANNUAL CONFERNECE	\$1,685.00	Other
COOLEY JERMAINE D	ATLANTA, GA	TETRAMINE IN URINE BY GC/MS	\$692.00	Federal
COOPER LAQUITA	ATLANTA, GA	NATIONAL ENVIRONMENTAL PUBLIC HEALTH CONFERENCE	\$1,583.00	Federal
COOPER LAQUITA	CHICAGO, IL	CDC NATIONAL LEAD POISONING PREVENTION TRAINING	\$322.00	Federal
COOPER LAQUITA	PHILADELPHIA, PA	NATIONAL MID YEAR CONFERENCE	\$781.00	Federal
COOPER LAQUITA NICHELLE	CHICAGO, IL	CDC NATIONAL LEAD POISONING PREVENTION TRAINING	\$346.00	Federal
COOPER LAQUITA NICHELLE	FLORENCE, AL	MID SOUTH CAH CONFERENCE	\$639.00	Federal
COOPER MARGARET D	SANDESTIN, FL	MS ACADEMY OF FAMILY PHYSICIANS 2009 MEETING	\$774.00	Federal
COURTNEY CLAUDE	TAMPA, FL	ACHIEVE ACTION INSTITUTE	\$706.00	Federal
COX LYNN T	BALTIMORE, MD	OASIS COORDINATOR'S CONFERENCE	\$1,253.00	Federal
COX LYNN T	BALTIMORE, MD	SKILLED NURSING FACILITY MDS CONFERENCES	\$1,699.00	Federal
COX LYNN T	TIMONIUM, MD	CMS INFECTION PREVENTION & CONTROL IN NURSING HOME	\$1,058.00	Federal
CRAFT CHRISTY LEIGH	FLORENCE, AL	MNA DISASTER PREPAREDNESS CONFERENCE	\$711.00	Federal
CRAFT CHRISTY LEIGH	ORLANDA, FL	NATIONAL HURRICANE CONFERENCE	\$1,842.00	Federal
CRAIG JAMES H III	ATLANTA, GA	PUBLIC HEALTH PREPAREDNESS SUMMIT 2010	\$916.00	Federal
CRAIG JAMES H III	HUNTSVILLE, AL	HOMELAND SECURITY SUMMIT	\$730.00	Federal
CRAIG JAMES H III	SCOTTSDALE, AZ	DIR OF PUBLIC HEALTH PREP	\$1,123.00	Federal
CREEL NICHOLAS S	ATLANTA, GA	NATIONAL BREAST & CERVICAL CANCER MEETING	\$1,079.00	Federal
CRUTHIRD MICHAEL B	WASHINGTON, DC	OSEP NATL EARLY CHILDHOOD CONFERENCE	\$1,793.00	St Support Spec
CURRIER MARY MARGARET	ATLANTA, GA	CDC REVERSE SITE VISIT	\$699.00	State
CURRIER MARY MARGARET	CHICAGO, IL	MLC OPEN FORUM/MULT-STATE LEARNING	\$1,589.00	State
DALE AIMEE	WASHINGTON, DC	E975: NIMS CIS ALL HAZ FIN/ADMIN UNIT LEADER	\$180.00	Federal
DANIEL BETTYE	ATLANTA, GA	CDC REGIONAL INTERGRATION WORKSHOP	\$1,585.00	Federal
DANIEL BETTYE	ATLANTA, GA	DIABETES PROGRAMS DIRECTORS' MEETING	\$1,412.00	Federal
DANIEL BETTYE	KANSAS CITY, MO	CDC DIABETES TRANSLATION CONFERENCE	\$2,261.00	Federal
DAVIS LORRIE ELAINE	ATLANTA, GA	COMMUNITIES PUTTING TO WORK:STATE & TERRITORY INIT	\$1,806.00	St Support Spec
DEAVER ANTHONY WARREN	WASHINGTON, DC	OSEP NATL EARLY CHILDHOOD CONFERENCE	\$1,439.00	St Support Spec
DEDEAUX WANDA JANE	SALT LAKE CITY, UT	COMP COLPOSCOPY COURSE	\$1,451.00	Federal

Name	Place	Purpose	Cost	Source
DENSON LOUISA ETHELENE	ATLANTA, GA	ANNUAL MCH BLOCK GRANT REVIEW	\$440.00	Federal
DENSON LOUISA ETHELENE	CHICAGO, IL	FAMILY VIOLENCE PREVENTION AND SERVICES	\$1,222.00	Federal
DENSON LOUISA ETHELENE	WASHINGTON, DC	GRANTEE SEXUAL ASSAULT CONF	\$2,138.00	Federal
DENSON LOUISA ETHELENE	WASHINGTON, DC	FAMILY VIOLENCE PREVENTION AND SERVICES GRANTEE_MT	\$799.00	Federal
DENSON LOUISA ETHELENE	WASHINGTON, DC	MATERNAL/CHILD HEALTH CONF	\$1,526.00	Federal
DENSON LOUISA ETHELENE	WASHINGTON, DC	MCH PARTNERSHIP MEETING	\$1,253.00	Federal
DENT VICKY L	ATLANTA, GA	NATL IMMUNIZATION CONFERENCE	\$1,586.00	Federal
DENT VICKY L	ATLANTA, GA	VACCINE UNIVERSITY 2010	\$2,001.00	Federal
DILLON LISA M	ALBANY, NY	FDA JUICE HACCP, FD319	\$1,473.00	State
DOVE CASSANDRA ANQUALA	ATLANTA, GA	CDC REVERSE SITE VISIT	\$694.00	Federal
DOVE CASSANDRA ANQUALA	TAMPA, FL	ACHIEVE ACTION INSTITUTE	\$563.00	Federal
DOVE CASSANDRA ANQUALA	WASHINGTON, DC	WEIGHT OF THE NATION CONF	\$1,415.00	Federal
EGGER STEPHEN	BALTIMORE, MD	BASIC AMBULATORY SURGICAL CENTER SURVEYOR TRNG	\$1,212.00	Federal
EGGER STEPHEN	BALTIMORE, MD	OASIS COORDINATOR'S CONFERENCE	\$1,312.00	Federal
EGGER STEPHEN G	ATLANTA, GA	CMS REGIONAL IV STATE DIRECTOR'S MEETING	\$527.00	Federal
EICHER DONALD ELLSWORTH III	AUSTIN, TX	NATL ORGANIZATION OF STATE OFFICES OF RURAL HLTH	\$572.00	Federal
EICHER DONALD ELLSWORTH III	WASHINGTON, DC	NRHA POLICY INSTITUTE	\$956.00	Federal
EMFINGER REBECCA R	JEFFERSON CITY, MO	WIC SPIRIT SYSTEM	\$1,007.00	Federal
FAGAN ROBERT EMMETT JR	BIRMINGHAM, AL	BALCH & BINGHAM LABOR LAW SEMINAR	\$638.00	Other
FIELDER CARRIE ELLEN	ANN ARBOR, MI	STIPDA & CDC JOINT MEETING 2010	\$1,138.00	Federal
FIELDER CARRIE ELLEN	PORTLAND, OR	NATIONAL SAFE ROUTES TO SCHOOL CONFERENCE	\$940.00	Federal
FORD ELEANOR A	ATLANTA, GA	CONTRACEPTIVE TECHNOLOGY QUEST FOR KNOWLEDGE	\$675.00	Federal
FORTENBERRY DEBORAH E	BALTIMORE, MD	CLIA BASIC TRAINING COURSE	\$1,499.00	Federal
FORTENBERRY DEBORAH E	LONGMONT, CO	CLIA PHASE III ASPEN TRAINING	\$1,101.00	Federal
FORTENBERRY DEBORAH E	OKLAHOMA CITY, OK	CMS SOUTHERN CONSORTIUM ANNUAL MEETING	\$1,428.00	Federal
FORTUNE MELODY	ATLANTA, GA	NATIONAL BREAST & CERVICAL CANCER MEETING	\$1,247.00	Federal
FRAISER BRANDY KATHERINE	ST. ROSE, LA	SAFETY ASPECTS OF INDUSTRIAL RADIOGRAPHY	\$1,094.00	Other
FRANKEL HARDIE H	NEW ORLEANS, LA	SOUTH CENTRAL PUBLIC HEALTH LEADERSHIP INSTITUTE	\$112.00	Federal
FRANKEL HARDIE H	ORANGE BEACH, AL	SOUTH CENTRAL PUBLIC HEALTH LEADERSHIP INSTITUTE	\$99.00	Federal
FRANKLIN FUNMI F	CHICAGO, IL	UNLICENSED NURSING ASST PERS	\$700.00	Federal
FRIDAY ISSAC TYRONE	LITTLE ROCK, AR	TEAM VISIT WIC SPIRIT	\$470.00	Federal
FULLER MIKE A	SCOTTSDALE, AZ	H1N1 IMMUNIZATION REGISTRY MEETING	\$1,156.00	Federal
FUNCHESS TANYA T	AUSTIN, TX	SOUTHERN OBESITY SUMMIT	\$852.00	Federal
FUNCHESS TANYA TOMEKIO	AUSTIN, TX	SOUTHERN OBESITY SUMMIT	\$866.00	Federal
FUNCHESS TANYA TOMEKIO	WASHINGTON, DC	NATIONAL FORUM FOR HEART DISEASE & STROKE PREVENTI	\$1,900.00	Federal
GARNER ASHLEY MARIE	ATLANTA, GA	COMMUNITIES PUTTING PREVENTION TO WORK	\$744.00	Federal
GARRETTE-OLUADE PATRICIA A	NEW ORLEANS, LA	SOUTH CENTRAL PUBLIC HEALTH LEADERSHIP INSTITUTE	\$433.00	Other
GARRETTE-OLUADE PATRICIA A	ORANGE BEACH, AL	SOUTH CENTRAL PUBLIC HEALTH LEADERSHIP INSTITUTE	\$285.00	Other
GIBBS ONA SYKES	LITTLE ROCK, AR	TEAM VISIT WIC SPIRIT	\$466.00	Federal
GIBBS ONA SYKES	SAN DIEGO, CA	NATL WIC ASSN TECHNOLOGY CONFERENCE	\$1,314.00	Federal
GIBBS ONA SYKES	WHITEFISH, MT	MOVING SPIRIT TO THE NEXT LEVEL	\$864.00	Federal
GIVENS PHYLLIS A	MONTGOMERY, AL	COURSE FOR RADIOANALYTICAL LAB	\$727.00	Other
GONG WILLIAM	ATLANTA, GA	PUBLIC HEALTH INFORMATION NETWORK CONFERENCE	\$2,347.00	Federal
GRAHAM JUANITA CAROL	NEW ORLEANS, LA	CITYMATCH URBAN MATERNL & CHILD HEALTH CONF	\$967.00	Federal
GRAHAM JUANITA CAROL	PHILADELPHIA, PA	ANNUAL APHA CONFERENCE	\$1,519.00	Federal
GRAHAM JUANITA CAROL	WASHINGTON, DC	MATERNAL/CHILD HEALTH CONF	\$1,529.00	Federal
GRAHAM JUANITA CAROL	WASHINGTON, DC	2010 ACHNE & ASTDN JOINT MEETING	\$1,153.00	St Support Spec
GRANT TIFFANI L	ATLANTA, GA	CDC NATL PROF DEVELOPMENT TRNG_-DASH FUNDED	\$1,512.00	Federal
GRANT TIFFANI L	FAYETTEVILLE, AR	PE 4 LIFE TRAINING	\$325.00	Federal
GRANT TIFFANI L	LITTLE ROCK, AK	SOUTHERN STATE COLLABORATIVE MEETING	\$295.00	Federal
GRANT TIFFANI L	MIAMI, FL	CDC NATL PROFESSIONAL DEVELOPMENT TRAINING	\$308.00	Federal
GREEN CANDICE ELOISE	ATLANTA, GA	2010 SUMMER EVALUATION INSTITUTE	\$1,433.00	Federal
GRIFFIN RICKY	ALEXANDRIA, VA	ASSN OF STATE DRINKING WATER ADMIN MEETING	\$1,269.00	Federal
GRUBBS CHERYL K	ATLANTA, GA	COMMUNITIES PUTTING TO WORK:STATE & TERRITORY INIT	\$1,845.00	St Support Spec

Name	Place	Purpose	Cost	Source
GUTHRIE-LEWIS ELVIE P	FORT LAUDERDALE, FL	NATIONAL WIC ASSN WINTER BOARD MEETING	\$1,607.00	Federal
GUTHRIE-LEWIS ELVIE P	MILWAUKEE, WI	NATL WIC ASSN EDUCATION & NETWORKING CONFERENCE	\$1,540.00	Federal
GUTHRIE-LEWIS ELVIE P	SAN FRANCISCO, CA	NATL WIC ASSN FALL BOARD MEETING	\$1,850.00	Federal
GUTHRIE-LEWIS ELVIE P	WASHINGTON, DC	NATL WIC ASSN BOARD OF DIRECTORS MTG	\$1,281.00	Federal
HAN NINGLONG	NASHVILLE, TN	ESRI HEALTH GIS CONFERENCE	\$781.00	Federal
HAN NINGLONG	NATIONAL HARBOR, MD	NATIONAL BIRTH DEFECTS PREVENTION NETWORK MEETING	\$1,259.00	Other
HAND SHERYL OWEN	SALT LAKE CITY, UT	ANNUAL PULSENET UPDATE MEETING	\$1,502.00	Federal
HANNA ISABEL	BALTIMORE, MD	BASIC AMBULATORY SURGICAL CENTER SURVEYOR TRNG	\$1,195.00	Federal
HARGROVE DIANE W	ATLANTIC CITY, NJ	NATL ASS OF FARMER'S MARKET NUTRITION PROGRAMS	\$1,102.00	Federal
HARPER LYNNETTE S	AUSTIN, TX	NATIONAL CERTIFIED INVESTIGATOR/INSPECTOR TRAINING	\$1,087.00	Other
HARPER LYNNETTE S	MONTGOMERY, AL	AL DEPT OF HEALTH UPDAT MEETING	\$324.00	Other
HARPER LYNNETTE S	WASHINGTON, DC	NATIONAL HIPAA SUMMIT/HEALTHCARE TRAINING	\$1,535.00	Other
HARPER LYNNETTE S	WASHINGTON, DC	18TH NATIONAL HIPAA SUMMIT	\$2,188.00	Other
HARRISON ROGER D	DALLAS, TX	BASIC LIFE SAFETY COURSE	\$1,457.00	Federal
HART WALTER R	ATLANTA, GA	COMMUNITIES PUTTING TO WORK:STATE & TERRITORY INIT	\$1,812.00	Federal
HATCHER LAQUITA S	ATLANTA, GA	MEDICAL MONITORING PROJECT (MMP) MEETING	\$1,078.00	Federal
HATCHER LAQUITA S	ATLANTA, GA	DATA MANAGEMENT TRAINING	\$1,087.00	Federal
HAUGHTON LINDA L	SAN ANTONIO, TX	OCCUPATIONAL SAFETY & HEALTH STATISTICS TRAINING	\$1,096.00	Federal
HAWKINS JACKIE S	COLUMBUS, OH	COMMUNITY HEALTH WORKERS: THE HEART OF IT ALL	\$578.00	Federal
HAWKINS JACKIE S	ORLANDO, FL	2010 NACDD CHRONIC DISEASE	\$1,205.00	Federal
HAWKINS JACKIE S	TAMPA, FL	ACHIEVE ACTION INSTITUTE	\$573.00	Federal
HAYDEL CARL LAWRENCE JR	NASHVILLE, TN	ESRI HEALTH GIS CONFERENCE	\$732.00	Federal
HAYNES KASHONDA	ATLANTA, GA	NATIONAL STD PREVENTION CONFERENCE	\$1,398.00	Federal
HAYNES LINDA ANN	ATLANTA, GA	2009 NATIONAL HIV CONFERENCE	\$1,460.00	Federal
HAYNES LINDA ANN	AUSTIN, TX	NATIONAL QUALITY CENTER TOT	\$1,097.00	Federal
HAYNES LINDA ANN	JACKSONVILLE, FL	ANAC 22ND ANNUAL CONFERENCE	\$1,745.00	Federal
HAYNES LINDA ANN	NEW ORLEANS, LA	RYAN WHITE DATA REPORT & SERVICES REPORT TRAINING	\$1,502.00	Federal
HENRY KAY G	ARLINGTON, VA	ACHNE AND ASTDN JOINT MEETING	\$1,079.00	Other
HESTER JOHN WILLIAM JR	ATLANTA, GA	COMMUNITIES PUTTING PREVENTION TO WORK	\$840.00	St Support Spec
HOGGATT PHILIS H	ASHEVILLE, NC	SERRG ANNUAL MEETING PHYSICIANS 2009 MEETING	\$1,661.00	Other
HOGGATT PHILIS H	ORLANDO, FL	NEWBORN SCREENING & GENETIC TESTING SYMPOSIUM	\$1,000.00	Other
HOLIDAY WILLIE E	ATLANTA, GA	NATIONAL CSFP ASSN ANNUAL CONFERENCE	\$575.00	Federal
HOLIDAY WILLIE E	ATLANTA, GA	WEB-BASED SUPPLY CHAIN MANAGEMENT USER TRAINING	\$2,251.00	Federal
HOUSTON ISABEL HANNA	BALTIMORE, MD	BASIC AMBULATORY SURGICAL CENTER SURVEYOR TRNG	\$1,185.00	Federal
HOWZE WARKIE ORDENIA	BALTIMORE, MD	ICF/MR SURVEYOR FOCUSED TRAINING	\$1,242.00	Federal
HUGHES ISABELLA	JACKSONVILLE, FL	ANAC 22ND ANNUAL CONFERENCE	\$1,779.00	Federal
HURSSSEY LISA DANIELLE	BIRMINGHAM, AL	AL EARLY INTERVENTION CONF	\$305.00	St Support Spec
IRVIN REGINA L	ATLANTA, GA	NATL IMMUNIZATION CONFERENCE	\$1,636.00	Federal
IRVIN REGINA L	ATLANTA,GA	ANNUAL PROG MANAGER MEETING	\$1,547.00	Federal
IRWIN THERESA ANN	LONGMONT, CO	CLIA PHASE III ASPEN TRAINING	\$1,060.00	Federal
IRWIN THERESA ANN	OKLAHOMA CITY, OK	CMS SOUTHERN CONSORTIUM ANNUAL MEETING	\$1,428.00	Federal
JAMES KELLI	LONGMONT, CO	ASPEN BASIC TRAINING	\$1,106.00	Federal
JEFFERSON DOROTHY D	ATLANTA, GA	WEB-BASED SUPPLY CHAIN MANAGEMENT USER TRAINING	\$2,282.00	Federal
JOHNSON COLBY LIDAL	PHOENIX, AZ	INTRODUCTION TO STD INTERVENTION CE	\$3,654.00	Federal
JOHNSON KENDRA LAKITA	ATLANTA, GA	NATIONAL STD PREVENTION CONFERENCE	\$1,397.00	Federal
JOHNSON KENDRA LAKITA	CHARLESTON, SC	REGION IV ADVISORY BOARD MEETING	\$1,351.00	Federal
JOHNSON KENDRA LAKITA	PHILADELPHIA, PA	AMERICAN PUBLIC HEALTH ASSN	\$1,505.00	Federal
JOHNSON NIKKI GIOVANNI	LAS VEGAS, NV	NFPA WORLD SAFETY CONFERENCE & EXPOSITION	\$1,106.00	Federal
JOHNSON NIKKI GIOVANNI	SEATTLE, WA	SMOKE ALARM GRANTEE MEETING	\$876.00	Federal
JOHNSON RICHARD A	JACKSONVILLE, FL	SITE VISIT FLORIDA VITAL RECORDS OFFICE	\$726.00	Other
JOHNSON RICHARD A	SAN DIEGO, CA	BEHAVIORAL RISK FACTOR SURV	\$1,189.00	Federal
JOHNSON RICHARD A	ST. LOUIS, MO	NAPHISI/NCHS JOINT MEETING	\$1,664.00	Other
JOHNSON TIFFANY ONIECE	LOUISVILLE, KY	CADCA'S 2009 MID YEAR TRAINING CAMP	\$1,738.00	Federal
JONES MICHAEL RANARD	ROCKVILLE, MD	STATE PRIMARY CARE OFFICES ANNUAL MEETING	\$1,468.00	Federal

Name	Place	Purpose	Cost	Source
JONES MICHAEL RANARD	TAMPA, FL	NATL HEALTH SERVICE COPRS ANNUAL SCHOLAR CONFERENC	\$1,282.00	Federal
JONES MICHAEL RANARD	WASHINGTON, DC	RURAL HEALTH POLICY GRANTEE PARTNERSHIP MTG	\$1,105.00	Federal
JONES SHERELDA DARLENE	MURFREESBORO, TN	CDC WATER FLUORIDATION:PRINCIPLE & PRACTICE COURSE	\$464.00	Federal
JORDAN MARY L	FORT LAUDERDALE, FL	NATIONAL WIC ASSN WINTER BOARD MEETING	\$1,546.00	Federal
JORDAN MARY L	MILWAUKEE, WI	NATL WIC ASSN EDUCATION & NETWORKING CONFERENCE	\$1,687.00	Federal
JORDAN MARY L	SAN FRANCISCO, CA	NATL WIC ASSN FALL BOARD MEETING	\$1,791.00	Federal
JORDAN MARY L	WASHINGTON, DC	NATL WIC ASSN BOARD OF DIRECTORS MTG	\$1,295.00	Federal
JUSTICE JOHN DANIEL	ATLANTA, GA	ANNUAL MCH BLOCK GRANT REVIEW	\$444.00	Federal
JUSTICE JOHN DANIEL	WASHINGTON, DC	MCH PARTNERSHIP MEETING	\$1,491.00	Federal
KING FELECIA D	ATLANTA, GA	QUALITY SER SUP TEAM MEETING	\$1,395.00	Federal
KING LOSONDRA S	ATLANTA, GA	USDA FINANCIAL TRAINING	\$1,678.00	Federal
KITCHENS CHRISTOPHER CHAD	BALTIMORE, MD	NFPA 99 HEALTH CARE FACILITIES	\$1,376.00	Other
KNOTT JEROME	SAVANNAH, GA	ANNUAL RURAL HEALTH CONF	\$1,584.00	Federal
KNOTT JEROME	WASHINGTON, DC	NRHA POLICY INSTITUTE	\$1,032.00	Federal
KOWALUK NICHOLAS MATTHEW	RICHMOND, VA	TRAIN THE TRAINER SENTINEL LABORATORY TRAINING	\$1,649.00	Federal
KWELLER DAVID B	OLATHE, KS	RESPIRATORY STATE LICENSURE LIASON GROUP	\$89.00	Other
LAKES RODNEY LEE	WASHINGTON, DC	OSEP NATL EARLY CHILDHOOD CONFERENCE	\$1,980.00	St Support Spec
LAMBERT RICHARD SAMUEL	MONTGOMERY, AL	PATIENT TRACKING TABLE TOP EXERCISE	\$203.00	Federal
LAMMONS KELLY N	RICHMOND, VA	LRN CONVENTIONAL TRAINING	\$1,289.00	Federal
LANGSTON LEDON	LEXINGTON, KY	TITLE X PRECEPTORSHIP TRAINING	\$1,089.00	Federal
LATHAM TEKEMIA O	ATLANTA, GA	NATIONAL ENVIRONMENTAL PUBLIC HEALTH CONFERENCE	\$1,582.00	Federal
LATHAM TEKEMIA O	PHILADELPHIA, PA	NATIONAL MID YEAR CONFERENCE	\$881.00	Federal
LEVY CHRISTIE	NEW ORLEANS, LA	SOUTHEAST REGIONAL FORUM	\$394.00	Federal
LEVY CHRISTIE	SCOTTSDALE, AZ	STC'S 8TH ANNUAL USER GROUP MEETING(SENTINEL USER)	\$732.00	Federal
LEWIS ALTHEA	ATLANTA, GA	NATIONAL HIV PREVENTION CONFERENCE	\$860.00	Federal
LEWIS-SMITH JEANETTE V	MADISON WI	CMS BASIC ICF/MR SURVEYOR TRAINING COURSE	\$1,499.00	Federal
LI MINA	ATLANTA, GA	CDC/ACS CCC RESOURCES WORKSHOP	\$1,525.00	Federal
LI MINA	BALTIMORE, MD	ACTION ON COLORECTAL CANCER	\$1,153.00	Federal
LI MINA	LAS VEGAS, NV	AM CANCER SOCIETY HEALTH EQUITY	\$1,176.00	Federal
LLOYD TIMOTHY L.	BATON ROUGE, LA	RADIOLOGICAL ASSESSMENT SYSTEM FOR CONSEQUENCE ANA	\$167.00	Other
LOTT BAYARD L	BIRMINGHAM, AL	SOUTH CENTRAL PARTNERSHIP ADVISORY BOARD	\$502.00	Other
LUCKETT VERONICA J	ATLANTA, GA	USDA FOOD & NUTRITION SERVICES APD TRAINING	\$506.00	Federal
LUCKETT VERONICA J	JEFFERSON CITY, MO	WIC SPIRIT SYSTEM	\$1,016.00	Federal
LUCKETT VERONICA J	LITTLE ROCK, AR	TEAM VISIT WIC SPIRIT	\$460.00	Federal
LUCKETT VERONICA J	MILWAUKEE, WI	NATL WIC ASSN EDUCATION & NETWORKING CONFERENCE	\$1,654.00	Federal
LUCKETT VERONICA J	SAN DIEGO, CA	NATL WIC ASSN TECHNOLOGY CONFERENCE	\$1,314.00	Federal
LUKE JOHN T	MYRTLE BEACH, SC	FDA SE REGION RETAIL FOOD SAFETY SEMINAR	\$400.00	State
LUKE JOHN T	PROVIDENCE, RI	CONFERENCE FOR FOOD PROTECTION	\$1,283.00	Other
MABERRY RANESSA O	LOUISVILLE, KY	CMS REGION IV STATE AGENCY DIRECTORS MTG	\$876.00	Federal
MADISON DWAYNE A	LONGMONT, CO	ASPEN BASIC TRAINING	\$1,105.00	Federal
MAGEE PATRICIA COLLEEN	BIRMINGHAM, AL	NETWORK 8 ANNUAL COUNCIL MEETING	\$710.00	Federal
MAGEE PATRICIA COLLEEN	SAN ANTONIO, TX	END STAGE RENAL DISEASE ANNUAL UPDATE	\$1,245.00	Federal
MALONE SAMMIE DEAN	CINCINNATI, OH	APHL EPA WATER ALLIANCE MEETING	\$1,954.00	Other
MANNERY CHANIKA	ATLANTA, GA	VACCINE UNIVERSITY 2010	\$1,997.00	Federal
MANNING TERESA C	BALTIMORE, MD	BASIC AMBULATORY SURGICAL CENTER SURVEYOR TRNG	\$1,192.00	Federal
MANNING TERESA C	BALTIMORE, MD	EMERGENCY MEDICAL TREATMENT & LABOR ACT	\$940.00	Federal
MANNING TERESA C	BIRMINGHAM, AL	NETWORK 8 ANNUAL COUNCIL MEETING	\$695.00	Federal
MANNING TERESA C	NEW ORLEANS, LA	LAMS HSOPICE AND PALLIATIVE CARE ORGN	\$499.00	Other
MANNING TERESA C	SAN ANTONIO, TX	END STAGE RENAL DISEASE ANNUAL UPDATE	\$1,241.00	Federal
MANNING TERI D	OKLAHOMA CITY, OK	CMS SOUTHERN CONSORTIUM ANNUAL MEETING	\$1,428.00	Federal
MAY ANN PARKER	JEFFERSON CITY, MO	WIC SPIRIT SYSTEM	\$1,048.00	Federal
MAY ANN PARKER	LITTLE ROCK, AR	TEAM VISIT WIC SPIRIT	\$552.00	Federal
MCANALLY EDWARD R	ATLANTA, GA	ANNUAL BRFS TRAINING WORKSHOP	\$1,090.00	Federal
MCANALLY EDWARD R	SAN DIEGO, CA	BEHAVIORAL RISK FACTOR SURV	\$1,207.00	Federal

Name	Place	Purpose	Cost	Source
MCEWEN MELANIE J	WASHINGTON, DC	NATIONAL HIPPA SUMMIT/HEALTHCARE TRAINING	\$1,801.00	Other
MCFARLAND CARRIE M	ARLINGTON, VA	TRAUMA REGISTER COURSE	\$1,562.00	Other
MCFARLAND CARRIE M	BALTIMORE, MD	DIGITAL INNOVATION USER CONF	\$1,313.00	Other
MCFARLAND CARRIE M	ORLANDO, FL	STN CONF TRAUMA OUTCOMES PERF	\$1,415.00	Other
MCGILVER Y IRMA FAYE	LONGMONT, CO	ASPEN ADVANCE TRAINING	\$221.00	Federal
MCKNIGHT KUTHERIA	ARLINGTON, VA	NATIONAL HEALTH CARE CONF	\$1,556.00	Federal
MCLEOD AMY L	HUNTSVILLE, AL	AL/MS AWWA PLANNING MEETING	\$255.00	Federal
MCLEOD AMY L	HUNTSVILLE, AL	AL/MS SECTION OF AWWA CONF	\$288.00	Federal
MCLEOD AMY L	SANDESTIN, FL	AM COUNCIL OF ENGINEERING COMP	\$537.00	Federal
MCMINN SHARON D	ATLANTA, GA	PUBLIC HEALTH PREPAREDNESS SUMMIT 2010	\$710.00	Federal
MCPHERSON KAREN DENISE	NEW ORLEANS, LA	SOUTH CENTRAL PUBLIC HEALTH LEADERSHIP INSTITUTE	\$395.00	State
MCPHERSON KAREN DENISE	ORANGE BEACH, AL	SOUTH CENTRAL PUBLIC HEALTH LEADERSHIP INSTITUTE	\$245.00	State
MOAK JAYSON DANIEL	BATON ROUGE, LA	RAAC RADIOLOGIACL ACCIDENT ASSESSMENT CONCEPTS	\$947.00	Other
MOAK JAYSON DANIEL	BATON ROUGE, LA	RADIOLOGICAL ASSESSMENT SYSTEM FOR CONSEQUENCE ANA	\$147.00	Other
MOAK JAYSON DANIEL	CHATTANOGA, TN	H-308 TRANSPORTATION OF RADIOACTIVE MATERIALS	\$1,150.00	Other
MOODY FRANCES D	ATLANTA, GA	QUALITY SER SUP TEAM MEETING	\$1,296.00	Federal
MOORMAN GARY L	ASHVILLE, NC	FD577 SPECIAL PROBLEMS IN MILK PROTECTION	\$755.00	State
MORAN LISA MARIE	NEW ORLEANS, LA	LOUISIANA MISSISSIPPI FOOD SERVICES EXPO	\$87.00	Other
MORENO DORA ADRIANA	NEW ORLEANS, LA	EFFECTIVE COMMUNICATION IN HEALTHCARE /NON ENGLISH	\$309.00	Federal
MORGAN CEDRIC ORLANDO	ATLANTA, GA	ANNUAL MCH BLOCK GRANT REVIEW	\$444.00	Federal
MORROW YOLANDA DIANA	BALTIMORE, MD	NBCOT CONF ON OCC THERAPY	\$779.00	Other
MORROW YOLANDA DIANA	NEW ORLEANS, LA	NATL COUNCIL ST BD OF EXAMINERS	\$857.00	Other
MORTON MARGARET O	CHICAGO,IL	MLC OPEN FORUM/MULT-STATE LEARNING	\$1,386.00	Other
MORTON MARGARET O	WASHINGTON, DC	TRAINING FOR HEALTH DEPT BETA TEST SITES	\$573.00	Other
MOSCA NICHOLAS G.	ST, LOUIS, MO	NATIONAL ORAL HEALTH CONFERENCE 2010	\$1,515.00	Federal
MOSCA NICHOLAS G.	WASHINGTON, DC	AMER ASSN FOR DENTAL RESEARCH	\$1,483.00	Other
MOULDER JUDY T	JACKSONVILLE, FL	SITE VISIT FLORIDA VITAL RECORDS OFFICE	\$941.00	Other
NEAL CASONDRA M	STATEWIDE	DISEASE PREVENTION - RYAN WHITE	\$242.00	Federal
NICHOLS CHIQUITA Y	NEW ORLEANS, LA	SOUTH CENTRAL PUBLIC HEALTH LEADERSHIP INSTITUTE	\$389.00	Other
NICHOLS CHIQUITA Y	ORANGE BEACH, AL	SOUTH CENTRAL PUBLIC HEALTH LEADERSHIP INSTITUTE	\$265.00	Other
NIELSEN MINDY C	ATLANTA, GA	CONTRACEPTIVE TECHNOLOGY QUEST FOR KNOWLEDGE	\$971.00	Federal
NIX CHARLES RAY	SAN DIEGO, CA	NATL ASSN OF STATE CONTROLLED SUBSTANCES CONFERENC	\$1,258.00	Other
NUTT LISA	TIMONIUM, MD	CMS INFECTION PREVENTION & CONTROL IN NURSING HOME	\$1,056.00	Federal
NUTT LISA KAY	BALTIMORE, MD	HOSPITAL CERTIFICATION & ADVANCED HOSPITAL SURVEY	\$1,295.00	Federal
NUTT LISA KAY	BALTIMORE, MD	SKILLED NURSING FACILITY MDS CONFERENCES	\$1,754.00	Federal
NUTT PAMELA RISHER	ARLINGTON, VA	ASTHO H1NI AFTER ACTION WORKSHOP	\$881.00	Federal
NUTT PAMELA RISHER	ATLANTA, GA	PUBLIC HEALTH PREPAREDNESS SUMMIT 2010	\$710.00	Federal
O'DWYER GILLIAN BRID	ATLANTA, GA	HPLC TRAINING	\$964.00	Federal
OWENS KENYATA J	ATLANTA, GA	ASP NET 2.0 PROG USING C#	\$935.00	Federal
PALMER RAMONA J	SAN DIEGO, CA	END STAGE RENAL DISEASE BASIC TECHNICAL TRNG	\$1,654.00	Federal
PARKER CAROLYN G	ATHENS, GA	REGION ST /EPA LAB MEETING	\$819.00	Other
PARKER CAROLYN G	RICHMOND, CA	DRINK WATER LABORATORY CERTIFICATION COURSE	\$905.00	Other
PARKER MELISSA L	ALEXANDRIA, VA	ASSN OF STATE DRINKING WATER ADMIN MEETING	\$1,269.00	Federal
PARKER MELISSA L	ATLANTA, GA	EPA/STATE WATER DIRECTORS MEETING	\$511.00	Federal
PARKER MELISSA L	GUNTERSVILLE, AL	EPA STATE WATER DIRECTOR'S MEETING	\$621.00	Federal
PARKER MELISSA L	PORTLAND, OR	ASDWA ANNUAL CONFERENCE	\$1,790.00	Federal
PARKS BERNADETTE	ATLANTA, GA	CDC REGIONAL INTEGRATION WORKSHOP	\$1,507.00	Federal
PARKS BERNADETTE	ATLANTA, GA	DIABETES PROGRAMS DIRECTORS' MEETING	\$1,499.00	Federal
PATE LINDA FAY	BALTIMORE, MD	HOSPITAL CERTIFICATION & ADVANCED HOSPITAL SURVEY	\$1,342.00	Federal
PATE LINDA FAY	BALTIMORE, MD	SURVEY & CERTIFICATION LEADERSHIP SUMMIT 2010	\$1,623.00	Federal
PATE LINDA FAY	LONGMONT, CO	ASPEN ADVANCE TRAINING	\$220.00	Federal
PATE LINDA FAY	SAN ANTONIO, TX	ASSN HEALTH FAC SURVEY AGENCIES	\$1,384.00	Other
PEARSON KEVIN E	JEFFERSON CITY, MO	WIC SPIRIT SYSTEM	\$961.00	Federal
PHILLIPS HUGH W	HOUSTON, TX	HAZ INCIDENT MGT TEAM TRAIN	\$381.00	Federal

Name	Place	Purpose	Cost	Source
POLK BERYL DENISE	NEW ORLEANS, LA	CITYMATCH URBAN MATERNAL & CHILD HEALTH CONF	\$810.00	Other
POPE DENA	ATLANTA, GA	REGION IV HEAD START ASSN 2010 TRAINING	\$906.00	Other
POYNOR LYNDAL	WASHINGTON, DC	OSEP NATL EARLY CHILDHOOD CONFERENCE	\$1,489.00	Federal
QUINN JAMES ROBERT	SALT LAKE CITY, UT	ANNUAL PULSENET UPDATE MEETING	\$1,502.00	Federal
RAMSEY KIMBERLY	ARLINGTON, VA	STATE BREASTFEEDING COALITIONS EMPOWERING	\$519.00	Federal
RAMSEY KIMBERLY LYNETTE	ARLINGTON, VA	STATE BREASTFEEDING COALITIONS EMPOWERING	\$498.00	Federal
RANKIN JODI LUANN	ATLANTA, GA	CDC NATL PROF DEVELOPMENT TRNG_-DASH FUNDED	\$1,513.00	Federal
RANKIN JODI LUANN	ATLANTA, GA	COMMUNITIES PUTTING TO WORK:STATE & TERRITORY INIT	\$1,825.00	St Support Spec
RANKIN JODI LUANN	AUSTIN, TX	SOUTHERN OBESITY SUMMIT	\$1,620.00	Federal
RANKIN JODI LUANN	LITTLE ROCK, AK	SOUTHERN STATE COLLABORATIVE MEETING	\$396.00	Federal
RANKIN JODI LUANN	MIAMI, FL	CDC NATL PROFESSIONAL DEVELOPMENT TRAINING	\$569.00	Federal
RANKIN JODI LUANN	WASHINGTON, DC	WEIGHT OF THE NATION CONF	\$1,421.00	Federal
RAUSA ALFIO	ATLANTA, GA	CDC REVERSE SITE VISIT	\$690.00	Federal
RAUSA ALFIO	PHILADELPHIA, PA	NATL ASSN OF LOCAL BOARD OF HEALTH CONFERENCE	\$1,294.00	State
RAUSA ALFIO	WASHINGTON, DC	PREVENTION 2010 ASSN OF PUBLIC HEALTH PHYSICIANS	\$840.00	Other
REED MARY ALICE	ATLANTA, GA	REGION IV - TITLE X FAMILY PLANNING	\$300.00	Federal
REED MARY ALICE	CHAPEL HILL, NC	RNDMU WORKSHOP AND FAMILY PLANNING MEETING	\$692.00	Federal
REED MARY ALICE	CHICAGO, IL	TITLE X FAMILY PLANNING NATIONAL GRANTEE MTG	\$1,316.00	Federal
REED MARY ALICE	PHILADELPHIA, PA	NATL MALE FAMILY PLANNING & REPRODUCTIVE HLTH SER	\$679.00	Federal
RIDDLE KAREY JEWEL	ORLANDO, FL	NATIONAL HURRICANE CONFERENCE	\$1,846.00	Federal
RILEY ROGER E	BIRMINGHAM, AL	SOUTH CENTRAL PARTNERSHIP ADVISORY BOARD	\$333.00	State
RILEY ROGER E	LITTLE ROCK, AR	TEAM VISIT WIC SPIRIT	\$309.00	Federal
ROBINSON JUDY LYNN	ATLANTA, GA	NATIONAL CSFP ASSN CONFERENCE	\$710.00	Federal
ROBINSON SEBRENIA C	WASHINGTON, DC	NATL COUNCIL ON AGING CDSMP GRANTEE MEETING	\$1,020.00	Federal
ROSAS-ALTIERI WENDY	NEW ORLEANS, LA	EFFECTIVE COMMUNICATION IN HEALTHCARE /NON ENGLISH	\$309.00	Federal
ROYALS LESLIE	ALEXANDRIA, VA	ASSN OF STATE DRINKING WATER ADMIN MEETING	\$1,269.00	Federal
ROYALS LESLIE	ATLANTA, GA	EPA/STATE WATER DIRECTORS MEETING	\$423.00	Federal
RUTLAND RITA HAMIL	JEFFERSON CITY, MO	WIC SPIRIT SYSTEM	\$950.00	Federal
SAUCIER CINDY L	NEW ORLEANS, LA	SOUTH CENTRAL PUBLIC HEALTH LEADERSHIP INSTITUTE	\$291.00	Other
SAUCIER CINDY L	ORANGE BEACH, AL	SOUTH CENTRAL PUBLIC HEALTH LEADERSHIP INSTITUTE	\$156.00	State
SEALE DANIELLE C	NEW ORLEANS, LA	SOUTH CENTRAL PUBLIC HEALTH LEADERSHIP INSTITUTE	\$433.00	Other
SEALE DANIELLE C	ORANGE BEACH, AL	SOUTH CENTRAL PUBLIC HEALTH LEADERSHIP INSTITUTE	\$266.00	State
SEAWRIGHT KENNETH C	ATLANTA, GA	PUBLIC HEALTH PREPAREDNESS SUMMIT 2010	\$743.00	Federal
SEAWRIGHT KENNETH C	SCOTTSDALE, AZ	DIR OF PUBLIC HEALTH PREP	\$1,035.00	Federal
SENNETT DEBORAH J	SCOTTSDALE , AZ	H1N1 IMMUNIZATION REGISTRY MEETING	\$1,202.00	Federal
SETTLES LISA ANTONIA	TEMPLE, TX	ASTDI ADVANCED STD INSTRUCTOR COURSE	\$1,249.00	Federal
SHANKS LAQUITA	PHILADELPHIA, PA	NATIONAL MID YEAR CONFERENCE	\$873.00	Federal
SHELBY MILLICENT LOUISE	ATLANTA, GA	CDC/ACS CCC RESOURCES WORKSHOP	\$1,482.00	Federal
SHELBY MILLICENT LOUISE	ATLANTA, GA	PUBLIC EDUCATION RECRUITMENT BREAST & CERVICAL	\$1,389.00	Federal
SHELBY MILLICENT LOUISE	HOOVER, AL	DEEP SOUTH NETWORK CANCER INST	\$416.00	Federal
SHORT EUNICE	CHICAGO, IL	EARLY HEARING DETECTION & INTERVENTION CONFERENCE	\$1,435.00	Federal
SHOWS KIMBERLY DENISE	JACKSONVILLE, FL	SITE VISIT FLORIDA VITAL RECORDS OFFICE	\$943.00	Other
SIMS SHARON D	LEXINGTON, KY	AM MOSQUITO CONTROL ASSN	\$1,758.00	Federal
SIMS SHARON D	SAN DESTIN, FL	MS ACADEMY OF FAMILY PHYSICIANS	\$1,438.00	Federal
SMITH ALFRED E	ATLANTA, GA	REGION IV STATE SURVEY DIRECTOR'S MTG	\$432.00	Federal
SMITH JAN P	NEW ORLEANS, LA	SIEMENS HEALTH CARE DIAGNOSTICS 2010	\$379.00	Federal
SMITH JAN P	OKLAHOMA CITY, OK	CMS SOUTHERN CONSORTIUM ANNUAL MEETING	\$1,432.00	Federal
SMITH KENNETH V	ATHENS, GA	REGION ST /EPA LAB MEETING	\$321.00	Other
SMITH KENNETH V	CINCINNATI, OH	APHL EPA WATER ALLIANCE MEETING	\$1,900.00	Other
SMITH LARRY	ATLANTA, GA	ANNUAL MCH BLOCK GRANT REVIEW	\$444.00	Federal
SMITH LARRY	TAMPA, FL	MATERNAL CHILD HEALTH EPI CONF	\$1,357.00	Federal
SMITH LARRY L	CHAPEL HILL, NC	RNDMU WORKSHOP AND FAMILY PLANNING MEETING	\$545.00	Federal
SMITH LARRY L	NASHVILLE, TN	ESRI HEALTH GIS CONFERENCE	\$829.00	Federal
SMITH ROGER WILLIAM	ATLANTA, GA	CMS REGIONAL IV STATE DIRECTOR'S MEETING	\$447.00	Federal

Name	Place	Purpose	Cost	Source
SMITHERS JACK R	ATLANTA, GA	USDA FINANCIAL TRAINING	\$1,656.00	Federal
SMITH-SILAS VALERIE L	BIRMINGHAM, AL	AL EARLY INTERVENTION CONF	\$644.00	St Support Spec
SNAZELLE TERI	MONTGOMERY, AL	COURSE FOR RADIOANALYTICAL LAB	\$687.00	Other
SOWELL PAULA H	CLEARWATER FL	CMS BASIC HOSPITAL SURVEYOR TRAINING COURSE	\$2,191.00	Federal
SOWELL PAULA H	NEW ORLEANS, LA	LA/MS HOSPICE AND PALLIATIVE CARE ORGN	\$687.00	Other
SPEIGHTS TRACI	PROVIDENCE, RI	COMPREHENSIVE COLOSCOPY	\$1,618.00	Federal
STINSON MONICA L	CHICAGO, IL	ASTHMA PARTNERS MEETING- CDC	\$1,362.00	Federal
STINSON SCOTT A	ALEXANDRIA, VA	NATL ASSN OF STATE EMS OFFICIALS GRANTEE MEETING	\$1,932.00	Other
STRINGFELLOW SANDRA	LITTLE ROCK, AR	R A S CA L	\$400.00	Other
STRINGFELLOW SANDRA	SAN ANTONIO, TX	RADIOBIOASSAY & RADIOCHEMICAL CONFERENCE	\$1,748.00	Other
SURKIN JOSEPH M	ATLANTA, GA	PUBLIC HEALTH INFORMATION NETWORK CONFERENCE	\$2,312.00	Federal
SURKIN JOSEPH M	BOSTON, MA	ORION RHAPSODY USER GROUP NORTH AMERICA	\$936.00	Other
SURKIN JOSEPH M	SAN FRANCISCO, CA	ORION RHAPSODY USER GROUP	\$1,090.00	Federal
SURKIN JOSEPH M	WASHINGTON, DC	NATL ASSN OF HEALTH DATA CONFERENCE	\$728.00	Federal
SUTTON VICTOR D	ATLANTA, GA	CDC REVERSE SITE VISIT	\$681.00	Federal
SUTTON VICTOR D	LAS VEGAS, NV	NFPA WORLD SAFETY CONFERENCE & EXPOSITION	\$1,106.00	Federal
SWAYZE ELIZABETH S	LANSING, MI	FD152- FOOD PROCESSING & TECHNOLOGY	\$1,116.00	Other
SWAYZE ELIZABETH S	MYRTLE BEACH, SC	FDA SE REGION RETAIL FOOD SAFETY SEMINAR	\$400.00	Other
TAYLOR DIETRICK TERRYCE	ATLANTA, GA	CONTRACEPTIVE TECHNOLOGY QUEST FOR KNOWLEDGE	\$863.00	Federal
TAYLOR DIETRICK TERRYCE	CHICAGO, IL	TITLE X FAMILY PLANNING NATIONAL GRANTEE MTG	\$1,282.00	Federal
TAYLOR DIETRICK TERRYCE	CHICAGO, IL	TITLE X FAMILY PLANNING NATIONAL GRANTEE MTG	\$1,350.00	Federal
TAYLOR JANICE	TEMPLE, TX	ASTDI ADVANCED STD INSTRUCTOR COURSE	\$800.00	Federal
TERRY SHARESSA HILL	BRIMINGHAM, AL	MONITORING SITE VISIT UNIVERSITY ALABAMA	\$403.00	Federal
THOMAS EVA G	NEW ORLEANS, LA	RYAN WHITE DATA REPORT & SERVICES REPORT TRAINING	\$1,600.00	Federal
THOMAS LAVETA	BIRMINGHAM, AL	2010 NRC REGION CONFERENCE	\$106.00	Federal
THOMAS LAVETA	SANDESTIN, FL	MS ACADEMY OF FAMILY PHYSICIANS 2009 MEETING	\$1,115.00	Federal
THOMPSON LAWANA WADE	LITTLE ROCK, AR	TEAM VISIT WIC SPIRIT	\$697.00	Federal
THOMPSON WILLIE R	ATLANTA, GA	USDA FINANCIAL TRAINING	\$1,617.00	Federal
TILLOTSON DIANA S	CAMBRIDGE, MA	CERTIFICATE OF TRAINING IN CHILDHOOD & ADOLESCENT	\$1,445.00	Federal
TOLSDORF BEATRYCE MCCROSKY	SAN ANTONIA, TX	ASSN HEALTH FAC SURVEY AGENCIES	\$1,099.00	Other
TRAVNICEK ROBERT G	NEW ORLEANS, LA	TULANE PUBLIC HEALTH TROPICAL MEDICINE	\$67.00	State
TRAVNICEK ROBERT G	NEW ORLEANS, LA	LOUISIANA MISSISSIPPI FOOD SERVICES EXPO	\$98.00	State
TRAVNICEK ROBERT G	WASHINGTON, DC	ACPM PREVENTIVE MEDICINE	\$636.00	State
TURNAGE SHERRYL	NEW ORLEANS, LA	BREASTFEEDING:THE GOLD STAND	\$232.00	Federal
UNDERWOOD RAMONA F	BOSTON, MA	ORION RHAPSODY USER GROUP NORTH AMERICA	\$1,206.00	Other
UNDERWOOD RAMONA F	SAN FRANCISCO, CA	ORION RHAPSODY USER GROUP	\$1,061.00	Federal
VALVI NIMISH R	CHICAGO, IL	ASTHMA PARTNERS MEETING- CDC	\$1,145.00	Federal
VARDAMAN JERRY WAYNE	ATLANTA, GA	NATIONAL HIV PREVENTION CONFERENCE	\$931.00	Federal
VARGAS-BODAS RODOLFO L	NASHVILLE, TN	2009 ESRI HEALTH GIS CONFERENCE	\$785.00	Other
VARNADO WENDY CAROL	LEXINGTON, KY	AM MOSQUITO CONTROL ASSN	\$1,771.00	Federal
VEAZEY CRYSTAL	ATLANTA, GA	NATIONAL ENVIRONMENTAL PUBLIC HEALTH CONFERENCE	\$1,585.00	Federal
VEAZEY CRYSTAL COVINGTON	CHICAGO, IL	CDC NATIONAL LEAD POISONING PREVENTION TRAINING	\$280.00	Federal
WARD CHARLES JOSEPH	WASHINGTON, DC	NAT'L CONGRESS ON HEALTH SYSTEM READINESS	\$1,725.00	Federal
WARD LINDA RENE	BALTIMORE, MD	NFPA 99 HEALTH CARE FACILITIES	\$1,363.00	Federal
WASHINGTON MCARTHUR	WASHINGTON, DC	U S CONSUMER PRODUCT SAFETY COMMISSION STATE MTG	\$180.00	State
WELLS JACQUELYN E	LITTLE ROCK, AR	TEAM VISIT WIC SPIRIT	\$467.00	Federal
WELLS JACQUELYN E	NEW ORLEANS, LA	SOUTH CENTRAL PUBLIC HEALTH LEADERSHIP INSTITUTE	\$444.00	Federal
WELLS JACQUELYN E	ORANGE BEACH, AL	SOUTH CENTRAL PUBLIC HEALTH LEADERSHIP INSTITUTE	\$267.00	Federal
WELLS JACQUELYN E	SAN DIEGO, CA	NATL WIC ASSN TECHNOLOGY CONFERENCE	\$1,287.00	Federal
WEST LYDIA HALEY	ATLANTA, GA	COMMUNITIES PUTTING TO WORK:STATE & TERRITORY INIT	\$1,740.00	St Support Spec
WHITE SHARON E	WASHINGTON, DC	E975: NIMS CIS ALL HAZ FIN/ADMIN UNIT LEADER	\$112.00	Federal
WHITFIELD JAMES ALVIN	HOUSTON, TX	HAZ INCIDENT MGT TEAM TRAIN	\$386.00	Federal
WILLIAMS ALISA DIANE	BETHESDA, MD	ANNUAL EMSC PROGRAM MEETING	\$2,007.00	Federal
WILLIAMS ALISA DIANE	LITTLE ROCK, AR	NAEMSO ANNUAL MEETING	\$1,518.00	Other

Name	Place	Purpose	Cost	Source
WILLIAMS CHARLOTTE LYNN	DENVER, CO	ACHIEVE ACTION INSTITUTE	\$2,169.00	Federal
WILLIAMS CHARLOTTE LYNN	HOUSTON, TX	STRATEGIC ALLIANCE FOR HEALTH ACTION INSTITUTE	\$1,110.00	Federal
WILLIAMS REBA	PROVIDENCE, RI	CMC BASIC LONG TERM CARE HEALTH FACILITY SURVEYOR	\$1,855.00	Federal
WILLIAMS STELLA MARIE	NEW ORLEANS, LA	SOUTH CENTRAL PUBLIC HEALTH LEADERSHIP INSTITUTE	\$449.00	State
WILLIAMS STELLA MARIE	ORANGE BEACH, AL	SOUTH CENTRAL PUBLIC HEALTH LEADERSHIP INSTITUTE	\$221.00	Other
WILSON FRANKIE WINN	JACKSON, TN	SNAP SUGAR IS NOT A POISON DIABETES WORKSHOP	\$100.00	Federal
WILSON FRANKIE WINN	NEW ORLEANS, LA	SOCIETY FOR NUTRITION EDUCATION FOOD SECURITY	\$201.00	Federal
WINBORNE LUCY M	LOUISVILLE, KY	CMS REGION IV STATE AGENCY DIRECTORS MTG	\$895.00	Federal
WINN LATANYA MARIA	NEW ORLEANS, LA	LOUISIANA MISSISSIPPI FOOD SERVICES EXPO	\$106.00	Other
WINTER AMY W	ARLINGTON, VA	STATE BREASTFEEDING COALITIONS EMPOWERING	\$521.00	Federal
WOMBLE DONNA B	BIRMINGHAM, AL	NETWORK 8 ANNUAL COUNCIL MEETING	\$779.00	Federal
WOODS JULIA S	SAN DIEGO, CA	NATL ASSN OF STATE CONTROLLED SUBSTANCES CONFERENC	\$1,243.00	State
WOODS JULIA S	ST. LOUIS, MO	NATL CONFERENCE ON PHARMACEUTICAL & CHEMICAL	\$2,542.00	Other
YOUNG TIFFANIE	ATLANTA, GA	JOINT PUBLIC EDUCATION AND OUTREACH TRAINING	\$1,228.00	Federal
YOUNG TIFFANIE	BIRMINGHAM, AL	DEEP SOUTH NETWORK INSTITUTE	\$507.00	State
YOUNGBLOOD DELLA LENE	ATLANTA, GA	RADON GRANTS/PLANNING MEETING	\$1,134.00	Other
YOUNGBLOOD DELLA LENE	DESTIN, FL	HOME BUILDERS ASSN OF MS STATE CONVENTION	\$1,909.00	Federal
YOUNGBLOOD DELLA LENE	LEXINGTON, KY	REGION 4 STATE MEETING MEDICAL FORUM	\$1,056.00	Federal
YOUNGBLOOD DELLA LENE	NASHVILLE, TN	RADON MEASUREMENT & MITIGATION IN KARST AREAS	\$992.00	Federal
YOUNGBLOOD DELLA LENE	ST. LOUIS, MO	NATIONAL RADON CONFERENCE	\$1,704.00	Federal
YOUNGBLOOD DELLA LENE	WASHINGTON, DC	INDOOR AIR QTY TOOLS SCHOOLS	\$1,719.00	Federal
ZHANG LEI	PHILADELPHIA, PA	AMERICAN PUBLIC HEALTH ASSN	\$1,804.00	Federal
ZHANG LEI	SAN DIEGO, CA	BEHAVIORAL RISK FACTOR SURV	\$1,485.00	Federal
ZHANG LEI	TAMPA, FL	MATERNAL CHILD HEALTH EPI CONF	\$1,198.00	Federal
ZHANG LEI	WASHINGTON, DC	AM STATISTICAL ASSN ANNUAL CONF	\$1,116.00	Federal

\$483,815.00

VEHICLE MILEAGE REPORT

ASSET	DESCRIPTION	VIN	MAKE	MODEL	YEAR	MILES	ODOMETER
301-0034187	1989 R1500 WAGON 4 DOOR	1GNER16K5KF150672	CHEV	R1500	1989		97,215
301-0036286	1991 V2500 WAGON 4 DOOR 4x4	1GNV26K6MF125521	CHEV	V2500	1991		112,181
301-0043525	1995 BRONCO UTILITY 4x4	1FMEU15H2SLB05697	FORD	BRONCO	1995	27,507	133,779
301-0044968	1995 ECONOLINE VAN CARGO VAN	1FTEE14Y7SH833923	FORD	ECONOLINE VAN	1995		338,577
301-0050200	1997 JIMMY WAGON 4 DOOR	1GKCS13W5V2546919	GMC	JIMMY	1997	10,914	106,574
301-0050205	1997 JIMMY WAGON 4 DOOR	1GKCS13W0V2546908	GMC	JIMMY	1997	227	92,547
301-0054514	2001 WINDSTAR EXTENDED SPORT VAN	2FMDA51431BB18956	FORD	WINDSTAR	2001		597,179
301-0054515	2001 WINDSTAR EXTENDED SPORT VAN	2FMDA51451BB18957	FORD	WINDSTAR	2001	27,850	137,393
301-0054790	2000 DRW SUPER DUTY MOTORIZED	1FCNF53S3Y0A14663	FORD	DRW SUPER DUTY	2000	13,529	62,141
301-0057359	2000 DRW SUPER DUTY MOTORIZED	1FCNF53S5Y0A14275	FORD	DRW SUPER DUTY	2000	956	18,035
301-0059097	2004 C2500 WAGON 4 DOOR	3GNGC26G34G141756	CHEV	C2500	2004	15,324	37,109
301-0059851	2005 CARAVAN SPORT VAN Front	1D4GP24R75B138390	DODG	CARAVAN	2005	51,976	131,597
301-0059852	2005 CARAVAN SPORT VAN Front	1D4GP24R05B138392	DODG	CARAVAN	2005	59,076	140,189
301-0059853	2005 CARAVAN SPORT VAN Front	1D4GP24R95B138391	DODG	CARAVAN	2005	49,051	98,998
301-0060381	2004 ECONOLINE VAN CARGO VAN	1FTRE14W24HB13128	FORD	ECONOLINE VAN	2004	33,507	80,758
301-0060516	2004 RAM TRUCK CREW PICKUP 4x4	3D7MU48C44G233429	DODG	RAM TRUCK	2004	25,705	93,185
301-0060555	2004 SIERRA PICKUP	1GTEC14V94Z335123	GMC	SIERRA	2004	6,810	13,605
301-0062607	2005 CROWN VICTORIA SEDAN 4 DOOR	2FAFP74W85X167511	FORD	CROWN VICTORIA	2005	17,852	28,935
301-0062748	2005 CARAVAN SPORT VAN Front	1D4GP24R55B428093	DODG	CARAVAN	2005	53,192	114,515
301-0062749	2005 CARAVAN SPORT VAN Front	1D4GP24R15B428091	DODG	CARAVAN	2005	54,337	109,340
301-0062750	2005 CARAVAN SPORT VAN Front	1D4GP24R35B428092	DODG	CARAVAN	2005	58,410	113,447
301-0062907	2006 ECONOLINE VAN CARGO VAN	1FTNE24W96HA35857	FORD	ECONOLINE VAN	2006	13,754	48,059
301-0062908	2006 ECONOLINE VAN CARGO VAN	1FTNE24W76HA35856	FORD	ECONOLINE VAN	2006	8,271	22,603
301-0063889	2006 RAM TRUCK CREW PICKUP 4x4	1D7KS28C06J162815	DODG	RAM TRUCK	2006	31,610	50,730
301-0064573	2006 TITAN CREW PICKUP 4x4	1N6BA07BX6N507090	NISS	TITAN	2006	48,387	75,852
301-0064574	2006 TITAN CLUB CAB PICKUP 4x4	1N6BA06B76N504746	NISS	TITAN	2006	11,026	28,053
301-0064575	2006 TITAN CLUB CAB PICKUP 4x4	1N6BA06B96N505283	NISS	TITAN	2006	65,385	81,620
301-0064576	2004 TITAN CREW PICKUP	1N6AA07A94N547533	NISS	TITAN	2004	52,332	95,371
301-0064577	2004 TITAN CREW PICKUP 4x4	1N6AA07B04N583071	NISS	TITAN	2004	57,901	96,364
301-0064578	2006 TITAN CLUB CAB PICKUP 4x4	1N6BA06B86N504741	NISS	TITAN	2006	57,541	76,179
301-0064579	2006 TITAN CREW PICKUP 4x4	1N6BA07B06N508605	NISS	TITAN	2006	50,327	69,636
301-0064580	2004 TITAN CREW PICKUP	1N6AA07A84N561486	NISS	TITAN	2004	61,188	95,571
301-0064605	2006 TITAN CLUB CAB PICKUP 4x4	1N6BA06B56N506883	NISS	TITAN	2006	69,440	98,951
301-0065241	2007 EXPEDITION WAGON 4 DOOR 4x4	1FMFK16547LA69551	FORD	EXPEDITION	2007	24,827	30,146
301-0070878	2010 DRW SUPER DUTY CREW CHASSIS	1FDAW5HR3AEA82602	FORD	DRW SUPER DUTY	2010		
301-0071221	2010 CARAVAN SPORT VAN Front	2D4RN4DE0AR390369	DODG	CARAVAN	2010		
301-0071222	2010 CARAVAN SPORT VAN Front	2D4RN4DE7AR390367	DODG	CARAVAN	2010		
301-0071223	2010 CARAVAN SPORT VAN Front	2D4RN4DE1AR390364	DODG	CARAVAN	2010		
301-0071224	2010 CARAVAN SPORT VAN Front	2D4RN4DE5AR390366	DODG	CARAVAN	2010		

