

2017 JUN 29 PM 3:59

# CERTIFICATION

## Consumer Confidence Report (CCR)

CITY OF FLOWOOD

Public Water Supply Name

0610044 and 0610075

List PWS ID #s for all Community Water Systems included in this CCR

The Federal Safe Drinking Water Act (SDWA) requires each Community public water system to develop and distribute a Consumer Confidence Report (CCR) to its customers each year. Depending on the population served by the public water system, this CCR must be mailed or delivered to the customers, published in a newspaper of local circulation, or provided to the customers upon request. Make sure you follow the proper procedures when distributing the CCR. **You must mail, fax or email a copy of the CCR and Certification to MSDH. Please check all boxes that apply.**

Customers were informed of availability of CCR by: (*Attach copy of publication, water bill or other*) Advertisement in local paper (attach copy of advertisement) On water bills (attach copy of bill) Email message (MUST Email the message to the address below) Other \_\_\_\_\_

Date(s) customers were informed: \_\_\_\_ / \_\_\_\_ / \_\_\_\_ , \_\_\_\_ / \_\_\_\_ / \_\_\_\_

CCR was distributed by U.S. Postal Service or other direct delivery. Must specify other direct delivery methods used mailoutDate Mailed/Distributed: 6 / 27 / 2017

CCR was distributed by Email (MUST Email MSDH a copy)

Date Emailed: \_\_\_\_ / \_\_\_\_ / \_\_\_\_

 As a URL (Provide URL \_\_\_\_\_) As an attachment As text within the body of the email messageCCR was published in local newspaper. (*Attach copy of published CCR or proof of publication*)Name of Newspaper: Rankin County NewsDate Published: 6 / 21 / 2017 6/28/2017CCR was posted in public places. (*Attach list of locations*)

Date Posted: \_\_\_\_ / \_\_\_\_ / \_\_\_\_

CCR was posted on a publicly accessible internet site at the following address (**DIRECT URL REQUIRED**):**CERTIFICATION**

I hereby certify that the Consumer Confidence Report (CCR) has been distributed to the customers of this public water system in the form and manner identified above and that I used distribution methods allowed by the SDWA. I further certify that the information included in this CCR is true and correct and is consistent with the water quality monitoring data provided to the public water system officials by the Mississippi State Department of Health, Bureau of Public Water Supply

Larry Rhoads, Mayor  
Name/Title (President, Mayor, Owner, etc.)

6-28-17  
Date

**Submission options (Select one method ONLY)**

**Mail:** (U.S. Postal Service)  
MSDH, Bureau of Public Water Supply  
P.O. Box 1700  
Jackson, MS 39215

**Fax:** (601) 576 - 7800**Email:** [water.reports@msdh.ms.gov](mailto:water.reports@msdh.ms.gov)

## **CCR Deadline to MSDH & Customers by July 1, 2017!**

2016 Annual Drinking Water Quality Report  
 City of Flowood  
 PWS#: 0610044 & 0610075  
 June 2017

We're pleased to present to you this year's Annual Quality Water Report. This report is designed to inform you about the quality water and services we deliver to you every day. Our constant goal is to provide you with a safe and dependable supply of drinking water. We want you to understand the efforts we make to continually improve the water treatment process and protect our water resources. We are committed to ensuring the quality of your water. Our water source is from wells drawing from the Cockfield Formation and Sparta Sand Aquifer.

The source water assessment has been completed for our public water system to determine the overall susceptibility of its drinking water supply to identified potential sources of contamination. A report containing detailed information on how the susceptibility determinations were made has been furnished to our public water system and is available for viewing upon request. The wells for the City of Flowood have received lower to moderate susceptibility rankings to contamination.

If you have any questions about this report or concerning your water utility, please contact Ken Tucker at 601.939.3186. We want our valued customers to be informed about their water utility. If you want to learn more, please attend any of our regularly scheduled meetings. They are held on the first and third Monday of each month at 6:30 PM at the Flowood City Hall located at 2101 Airport Road, Flowood, MS.

We routinely monitor for contaminants in your drinking water according to Federal and State laws. This table below lists all of the drinking water contaminants that were detected during the period of January 1<sup>st</sup> to December 31<sup>st</sup>, 2016. In cases where monitoring wasn't required in 2016, the table reflects the most recent results. As water travels over the surface of land or underground, it dissolves naturally occurring minerals and, in some cases, radioactive materials and can pick up substances or contaminants from the presence of animals or from human activity; microbial contaminants, such as viruses and bacteria, that may come from sewage treatment plants, septic systems, agricultural livestock operations, and wildlife; inorganic contaminants, such as salts and metals, which can be naturally occurring or result from urban storm-water runoff, industrial, or domestic wastewater discharges, oil and gas production, mining, or farming; pesticides and herbicides, which may come from a variety of sources such as agriculture, urban storm-water runoff, and residential uses; organic chemical contaminants, including synthetic and volatile organic chemicals, which are by-products of industrial processes and petroleum production, and can also come from gas stations and septic systems; radioactive contaminants, which can be naturally occurring or be the result of oil and gas production and mining activities. In order to ensure that tap water is safe to drink, EPA prescribes regulations that limit the amount of certain contaminants in water provided by public water systems. All drinking water, including bottled drinking water, may be reasonably expected to contain at least small amounts of some contaminants. It's important to remember that the presence of these contaminants does not necessarily indicate that the water poses a health risk.

In this table you will find many terms and abbreviations you might not be familiar with. To help you better understand these terms we've provided the following definitions:

**Action Level** - the concentration of a contaminant which, if exceeded, triggers treatment or other requirements which a water system must follow.

**Maximum Contaminant Level (MCL)** - The "Maximum Allowed" (MCL) is the highest level of a contaminant that is allowed in drinking water. MCLs are set as close to the MCLGs as feasible using the best available treatment technology.

**Maximum Contaminant Level Goal (MCLG)** - The "Goal"(MCLG) is the level of a contaminant in drinking water below which there is no known or expected risk to health. MCLGs allow for a margin of safety.

**Maximum Residual Disinfectant Level (MRDL)** - The highest level of a disinfectant allowed in drinking water. There is convincing evidence that addition of a disinfectant is necessary to control microbial contaminants.

**Maximum Residual Disinfectant Level Goal (MRDLG)** - The level of a drinking water disinfectant below which there is no known or expected risk of health. MRDLGs do not reflect the benefits of the use of disinfectants to control microbial contaminants.

**Parts per million (ppm) or Milligrams per liter (mg/l)** - one part per million corresponds to one minute in two years or a single penny in \$10,000.

**Parts per billion (ppb) or Micrograms per liter** - one part per billion corresponds to one minute in 2,000 years, or a single penny in \$10,000,000.

PWS ID # 0610044		TEST RESULTS						
Contaminant	Violation Y/N	Date Collected	Level Detected	Range of Detects or # of Samples Exceeding MCL/ACL	Unit Measure -ment	MCLG	MCL	Likely Source of Contamination
<b>Inorganic Contaminants</b>								
10. Barium	N	2016	.0055	.005 - .0055	ppm	2	2	Discharge of drilling wastes; discharge from metal refineries; erosion of natural deposits
14. Copper	N	2014/16	.8	0	ppm	1.3	AL=1.3	Corrosion of household plumbing systems; erosion of natural deposits; leaching from wood preservatives
16. Fluoride	N	2016	.258	.232 - .258	ppm	4	4	Erosion of natural deposits; water additive which promotes strong teeth; discharge from fertilizer and aluminum factories
17. Lead	N	2014/16	2	0	ppb	0	AL=15	Corrosion of household plumbing systems, erosion of natural deposits
<b>Disinfection By-Products</b>								

81. HAA5	N	2016	27	5 - 27	ppb	0	60	By-Product of drinking water disinfection.
Chlorine	N	2016	2	.8 - 3.9	mg/l	0	MDRL = 4	Water additive used to control microbes

PWS ID # 0610075		TEST RESULTS						
Contaminant	Violation Y/N	Date Collected	Level Detected	Range of Detects or # of Samples Exceeding MCL/ACL	Unit Measure -ment	MCLG	MCL	Likely Source of Contamination
<b>Inorganic Contaminants</b>								
10. Barium	N	2016	.0062	.0011 - .0062	ppm	2	2	Discharge of drilling wastes; discharge from metal refineries; erosion of natural deposits
13. Chromium	N	2016	1.2	.5 - 1.2	ppb	100	100	Discharge from steel and pulp mills; erosion of natural deposits
14. Copper	N	2014/16	.2	0	ppm	1.3	AL=1.3	Corrosion of household plumbing systems; erosion of natural deposits; leaching from wood preservatives
15. Cyanide	N	2016	39	No Range	ppb	200	200	Discharge from steel/metal factories; discharge from plastic and fertilizer factories
16. Fluoride	N	2016	1.12	.111 - 1.12	ppm	4	4	Erosion of natural deposits; water additive which promotes strong teeth; discharge from fertilizer and aluminum factories
17. Lead	N	2014/16	1	0	ppb	0	AL=15	Corrosion of household plumbing systems; erosion of natural deposits
<b>Disinfection By-Products</b>								
81. HAA5	N	2016	35	3 - 40	ppb	0	60	By-Product of drinking water disinfection.
82. TTHM [Total trihalomethanes]	N	2016	44	3.96 - 56.4	ppb	0	80	By-product of drinking water chlorination.
Chlorine	N	2016	1.6	.3 - 3.8	mg/l	0	MRDL = 4	Water additive used to control microbes

\* Most recent sample. No sample required for 2016.

\*\* Fluoride level is routinely adjusted to the MS State Dept of Health's recommended level of 0.7 - 1.3 mg/l.

As you can see by the table, our system had no violations. We're proud that your drinking water meets or exceeds all Federal and State requirements. We have learned through our monitoring and testing that some contaminants have been detected however the EPA has determined that your water IS SAFE at these levels.

We are required to monitor your drinking water for specific contaminants on a monthly basis. Results of regular monitoring are an indicator of whether or not our drinking water meets health standards. We did complete the monitoring requirements for bacteriological sampling that showed no coliform present. In an effort to ensure systems complete all monitoring requirements, MSDH now notifies systems of any missing samples prior to the end of the compliance period.

#### Significant Deficiencies

During a sanitary survey conducted on 9/20/13, the Mississippi State Department of Health cited the following significant deficiency:

Inadequate application of treatment chemical and techniques (primary MCLs)

Corrective actions: MSDH is currently working with this system to return them to compliance since the expiration of the compliance deadline. We anticipate the system being returned to compliance by 6/30/2017.

If present, elevated levels of lead can cause serious health problems, especially for pregnant women and young children. Lead in drinking water is primarily from materials and components associated with service lines and home plumbing. Our water system is responsible for providing high quality drinking water, but cannot control the variety of materials used in plumbing components. When your water has been sitting for several hours, you can minimize the potential for lead exposure by flushing your tap for 30 seconds to 2 minutes before using water for drinking or cooking. If you are concerned about lead in your water, you may wish to have your water tested. Information on lead in drinking water, testing methods, and steps you can take to minimize exposure is available from the Safe Drinking Water Hotline or at <http://www.epa.gov/safewater/lead>. The Mississippi State Department of Health Public Health Laboratory offers lead testing. Please contact 601.576.7582 if you wish to have your water tested.

To comply with the "Regulation Governing Fluoridation of Community Water Supplies", our system #0610044 is required to report certain results pertaining to fluoridation of our water system. The number of months in the previous calendar year in which average fluoride sample results were within the optimal range of 0.7-1.3 ppm was 0. The percentage of fluoride samples collected in the previous calendar year that was within the optimal range of 0.7-1.3 ppm was 0%.

To comply with the "Regulation Governing Fluoridation of Community Water Supplies", our system #0610075 is required to report certain results pertaining to fluoridation of our water system. The number of months in the previous calendar year in which average fluoride sample results were within

the optimal range of 0.7-1.3 ppm was 8. The percentage of fluoride samples collected in the previous calendar year that was within the optimal range of 0.7-1.3 ppm was 39%.

All sources of drinking water are subject to potential contamination by substances that are naturally occurring or man made. These substances can be microbes, inorganic or organic chemicals and radioactive substances. All drinking water, including bottled water, may reasonably be expected to contain at least small amounts of some contaminants. The presence of contaminants does not necessarily indicate that the water poses a health risk. More information about contaminants and potential health effects can be obtained by calling the Environmental Protection Agency's Safe Drinking Water Hotline at 1-800-426-4791.

Some people may be more vulnerable to contaminants in drinking water than the general population. Immuno-compromised persons such as persons with cancer undergoing chemotherapy, persons who have undergone organ transplants, people with HIV/AIDS or other immune system disorders, some elderly, and infants can be particularly at risk from infections. These people should seek advice about drinking water from their health care providers. EPA/CDC guidelines on appropriate means to lessen the risk of infection by cryptosporidium and other microbiological contaminants are available from the Safe Drinking Water Hotline 1-800-426-4791.

The City of Flowood works around the clock to provide top quality water to every tap. We ask that all our customers help us protect our water sources, which are the heart of our community, our way of life and our children's future.

Georgia Jones, Cortez Oliver, Jonathan Allgood Jr and Tamia Lipsey.

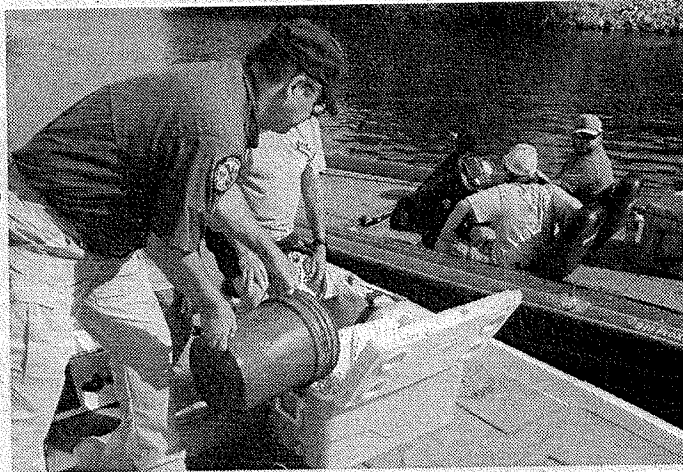
miss a 2017 game, season passes and chair-back seat tickets are now available. The 2017 Cougar Varsity Football season passes are \$40. To enjoy Cougar Football in comfort, chair-back seats are

two separate checks for the seat/passes, one to NWR and one to NWR Cougar Club.

Chair-back seats are limited. The Vine Street Office is open daily from 8 a.m.-2 p.m.

# mouth Reservoir

For more information regarding fishing in Mississippi, visit [www.mdwfp.com](http://www.mdwfp.com) or call (601) 432-2200. Follow us on Facebook at [facebook.com/mdwfp](https://www.facebook.com/mdwfp) or on Twitter at [www.twitter.com/MDWFPonline](https://www.twitter.com/MDWFPonline).



## 2016 Annual Drinking Water Quality Report City of Flowood PWS#: 0610044 & 0610075 June 2017

We're pleased to present to you this year's Annual Quality Water Report. This report is designed to inform you about the quality water and services we deliver to you every day. Our constant goal is to provide you with a safe and dependable supply of drinking water. We want you to understand the efforts we make to continually improve the water treatment process and protect our water resources. We are committed to ensuring the quality of your water. Our water source is from wells drawing from the Cockfield Formation and Sparta Sand Aquifer.

The source water assessment has been completed for our public water system to determine the overall susceptibility of its drinking water supply to identified potential sources of contamination. A report containing detailed information on how the susceptibility determinations were made has been furnished to our public water system and is available for viewing upon request. The wells for the City of Flowood have received lower to moderate susceptibility rankings to contamination.

If you have any questions about this report or concerning your water utility, please contact Ken Tucker at 601.939.3186. We want our valued customers to be informed about their water utility. If you want to learn more, please attend any of our regularly scheduled meetings. They are held on the first and third Monday of each month at 6:30 PM at the Flowood City Hall located at 2101 Airport Road, Flowood, MS.

We routinely monitor for contaminants in your drinking water according to Federal and State laws. This table below lists all of the drinking water contaminants that were detected during the period of January 1<sup>st</sup> to December 31<sup>st</sup>, 2016. In cases where monitoring wasn't required in 2016, the table reflects the most recent results. As water travels over the surface of land or underground, it dissolves naturally occurring minerals and, in some cases, radioactive materials and can pick up substances or contaminants from the presence of animals or from human activity; microbial contaminants, such as viruses and bacteria, that may come from sewage treatment plants, septic systems, agricultural livestock operations, and wildlife; inorganic contaminants, such as salts and metals, which can be naturally occurring or result from urban storm-water runoff, industrial, or domestic wastewater discharges, oil and gas production, mining, or farming; pesticides and herbicides, which may come from a variety of sources such as agriculture, urban storm-water runoff, and residential uses; organic chemical contaminants, including synthetic and volatile organic chemicals, which are by-products of industrial processes and petroleum production, and can also come from gas stations and septic systems; radioactive contaminants, which can be naturally occurring or be the result of oil and gas production and mining activities. In order to ensure that tap water is safe to drink, EPA prescribes regulations that limit the amount of certain contaminants in water provided by public water systems. All drinking water, including bottled drinking water, may be reasonably expected to contain at least small amounts of some contaminants. It's important to remember that the presence of these contaminants does not necessarily indicate that the water poses a health risk.

In this table you will find many terms and abbreviations you might not be familiar with. To help you better understand these terms we've provided the following definitions:

**Action Level** - the concentration of a contaminant which, if exceeded, triggers treatment or other requirements which a water system must follow.

**Maximum Contaminant Level (MCL)** - The "Maximum Allowed" (MCL) is the highest level of a contaminant that is allowed in drinking water. MCLs are set as close to the MCLGs as feasible using the best available treatment technology.

**Maximum Contaminant Level Goal (MCLG)** - The "Goal" (MCLG) is the level of a contaminant in drinking water below which there is no known or expected risk to health. MCLGs allow for a margin of safety.

**Maximum Residual Disinfectant Level (MRDL)** - The highest level of a disinfectant allowed in drinking water. There is convincing evidence that addition of a disinfectant is necessary to control microbial contaminants.

**Maximum Residual Disinfectant Level Goal (MRDLG)** - The level of a drinking water disinfectant below which there is no known or expected risk of health. MRDLGs do not reflect the benefits of the use of disinfectants to control microbial contaminants.

**Parts per million (ppm) or Milligrams per liter (mg/l)** - one part per million corresponds to one minute in two years or a single penny in \$10,000.

**Parts per billion (ppb) or Micrograms per liter** - one part per billion corresponds to one minute in 2,000 years, or a single penny in \$10,000,000.

**PWS ID # 0610044**

**TEST RESULTS**

Contaminant	Violation Y/N	Date Collected	Level Detected	Range of Defects or # of Samples Exceeding MCL/ACL	Unit Measurement	MCLG	MCL	Likely Source of Contamination
<b>Inorganic Contaminants</b>								
10. Barium	N	2016	.0056	.005 - .0085	ppm	2	2	Discharge of drilling wastes; discharge from metal refineries; erosion of natural deposits
14. Copper	N	2014/16	0	0	ppm	1.3	AL=1.3	Corrosion of household plumbing systems; erosion of natural deposits; leaching from wood preservatives
16. Fluoride	N	2016	.268	.232 - .268	ppm	4	4	Erosion of natural deposits; water additive which promotes strong teeth; discharge from fertilizer and aluminum factories
17. Lead	N	2014/16	2	0	ppb	0	AL=15	Corrosion of household plumbing systems; erosion of natural deposits
<b>Disinfection By-Products</b>								
B1. HAA5	N	2016	27	5 - 27	ppb	0	60	By-Product of drinking water disinfection.
Chlorine	N	2016	2	.8 - 3.9	mg/l	0	MDRL = 4	Water additive used to control microbes

**PWS ID # 0610075**

**TEST RESULTS**

Contaminant	Violation Y/N	Date Collected	Level Detected	Range of Defects or # of Samples Exceeding MCL/ACL	Unit Measurement	MCLG	MCL	Likely Source of Contamination
<b>Inorganic Contaminants</b>								
10. Barium	N	2016	.0092	.0011 - .0062	ppm	2	2	Discharge of drilling wastes; discharge from metal refineries; erosion of natural deposits
13. Chromium	N	2016	1.2	.5 - 1.2	ppb	100	100	Discharge from steel and pulp mills; erosion of natural deposits
14. Copper	N	2014/16	.2	0	ppm	1.3	AL=1.3	Corrosion of household plumbing systems; erosion of natural deposits; leaching from wood preservatives
15. Cyanide	N	2016	39	No Range	ppb	200	200	Discharge from steel/metal factories; discharge from plastic and fertilizer factories
16. Fluoride	N	2016	1.12	.111 - 1.12	ppm	4	4	Erosion of natural deposits; water additive which promotes strong teeth; discharge from fertilizer and aluminum factories
17. Lead	N	2014/16	1	0	ppb	0	AL=15	Corrosion of household plumbing systems; erosion of natural deposits
<b>Disinfection By-Products</b>								
B1. HAA5	N	2016	35	3 - 40	ppb	0	60	By-Product of drinking water disinfection.
B2. THM (Total trihalomethanes)	N	2016	44	3.86 - 58.4	ppb	0	80	By-product of drinking water chlorination.
Chlorine	N	2016	1.6	.3 - 3.9	mg/l	0	MDRL = 4	Water additive used to control microbes

\* Most recent sample. No sample required for 2016.

\*\* Fluoride level is routinely adjusted to the MS State Dept of Health's recommended level of 0.7 - 1.3 mg/l.

As you can see by the table, our system had no violations. We're proud that your drinking water meets or exceeds all Federal and State requirements. We have learned through our monitoring and testing that some contaminants have been detected however the EPA has determined that your water IS SAFE at these levels.

We are required to monitor your drinking water for specific contaminants on a monthly basis. Results of regular monitoring are an indicator of whether or not our drinking water meets health standards. We did complete the monitoring requirements for bacteriological sampling that showed no coliform present. In an effort to ensure systems complete all monitoring requirements, MSDH now notifies systems of any missing samples prior to the end of the compliance period.

**Significant Deficiencies**

During a sanitary survey conducted on 9/20/13, the Mississippi State Department of Health cited the following significant deficiency:

Inadequate application of treatment chemical and techniques (primary MCLs).

**Corrective actions:** MSDH is currently working with this system to return them to compliance since the expiration of the compliance deadline. We anticipate the system being returned to compliance by 6/30/2017.

If present, elevated levels of lead can cause serious health problems, especially for pregnant women and young children. Lead in drinking water is primarily from materials and components associated with service lines and home plumbing. Our water system is responsible for providing high quality drinking water, but cannot control the variety of materials used in plumbing components. When your water has been sitting for several hours, you can minimize the potential for lead exposure by flushing your tap for 30 seconds to 2 minutes before using water for drinking or cooking. If you are concerned about lead in your water, you may wish to have your water tested. Information on lead in drinking water, testing methods, and steps you can take to minimize exposure is available from the Safe Drinking Water Hotline or at <http://www.epa.gov/safewater/lead>. The Mississippi State Department of Health Public Health Laboratory offers lead testing. Please contact 601.576.7562 if you wish to have your water tested.

To comply with the "Regulation Governing Fluoridation of Community Water Supplies", our system #0610044 is required to report certain results pertaining to fluoridation of our water system. The number of months in the previous calendar year in which average fluoride sample results were within the optimal range of 0.7-1.3 ppm was 0. The percentage of fluoride samples collected in the previous calendar year that was within the optimal range of 0.7-1.3 ppm was 0%.

To comply with the "Regulation Governing Fluoridation of Community Water Supplies", our system #0610075 is required to report certain results pertaining to fluoridation of our water system. The number of months in the previous calendar year in which average fluoride sample results were within the optimal range of 0.7-1.3 ppm was 8. The percentage of fluoride samples collected in the previous calendar year that was within the optimal range of 0.7-1.3 ppm was 39%.

All sources of drinking water are subject to potential contamination by substances that are naturally occurring or man made. These substances can be microbes, inorganic or organic chemicals and radioactive substances. All drinking water, including bottled water, may reasonably be expected to contain at least small amounts of some contaminants. The presence of contaminants does not necessarily indicate that the water poses a health risk. More information about contaminants and potential health effects can be obtained by calling the Environmental Protection Agency's Safe Drinking Water Hotline at 1-800-426-4791.

Some people may be more vulnerable to contaminants in drinking water than the general population. Immuno-compromised persons such as persons with cancer, undergoing chemotherapy, persons who have undergone organ transplants, people with HIV/AIDS or other immune system disorders, some elderly, and infants can be particularly at risk from infections. These people should seek advice about drinking water from their health care providers. EPA/CDC guidelines on appropriate means to lessen the risk of infection by cryptosporidium and other microbiological contaminants are available from the Safe Drinking Water Hotline 1-800-426-4791.

The City of Flowood works around the clock to provide top quality water to every tap. We ask that all our customers help us protect our water sources, which are the heart of our community, our way of life and our children's future.



# Local anglers assist with large bass stocking at Ross Barnett

JACKSON – The Mississippi Department of Wildlife, Fisheries, and Parks (MDWFP) recently stocked Florida-strain largemouth bass into Ross Barnett Reservoir. In cooperation with Pearl River Valley Water Supply District and local bass anglers, the fish were transported

and released into backwater areas to improve survival. Volunteers using the Hwy 43 ramps near Tommy's Trading Post stocked approximately 90,000 fingerling bass.

"Largemouth bass are a popular sport fish on Ross Barnett Reservoir," said

MDWFP Fisheries Biologist Ryan Jones. According to Jones, the goal is to produce more trophy-sized bass. The fish were reared at MDWFP's Turcotte Fish Hatchery, located near Canton. MDWFP's hatcheries produce fish for stocking in public waters throughout Mississippi.

**ADVERTISE IN THE RCN! CALL US AT 601-825-8333**

2016 Annual Drinking Water Quality Report  
Central Rankin Water Association, Inc.  
PWS#: 0610081  
May 2017

We're pleased to present to you this year's Annual Quality Water Report. This report is designed to inform you about the quality water and services we deliver to you every day. Our constant goal is to provide you with a safe and dependable supply of drinking water. We want you to understand the efforts we make to continually improve the water treatment process and protect our water resources. We are committed to ensuring the quality of your water. Our water source is from wells drawing from the Sparta Sand Aquifer.

The source water assessment has been completed for our public water system to determine the overall susceptibility of its drinking water supply to identify potential sources of contamination. A report containing detailed information on how the susceptibility determinations were made has been furnished to our public water system and is available for viewing upon request. The wells for the Central Rankin Water Association have received a lower to moderate susceptibility ranking to contamination.

If you have any questions about this report or concerning your water utility, please contact Roland Walker at 601.940.1179. We want our valued customers to be informed about their water utility. If you want to learn more, please attend the meeting scheduled for the third Thursday of the month at 6:00 PM at the CRWA Office.

We routinely monitor for contaminants in your drinking water according to Federal and State laws. This table below lists all of the drinking water contaminants that we detected during the period of January 1<sup>st</sup> to December 31<sup>st</sup>, 2016. In cases where monitoring wasn't required in 2016, the table reflects the most recent results. As water travels over the surface of land or underground, it dissolves naturally occurring minerals and, in some cases, radioactive materials and can pick up substances or contaminants from the presence of animals or from human activity; microbial contaminants, such as viruses and bacteria, that may come from sewage treatment plants, septic systems, agricultural livestock operations, and wildlife; inorganic contaminants, such as salts and metals, which can be naturally occurring or result from urban storm-water runoff, industrial, or domestic wastewater discharges, oil and gas production, mining, or farming; pesticides and herbicides, which may come from a variety of sources such as agriculture, urban storm-water runoff, and residential uses; organic chemical contaminants, including synthetic and volatile organic chemicals, which are by-products of industrial processes and petroleum production, and can also come from gas stations and septic systems; radioactive contaminants, which can be naturally occurring or be the result of oil and gas production and mining activities. In order to ensure that tap water is safe to drink, EPA prescribes regulations that limit the amount of certain contaminants in water provided by public water systems. All drinking water, including bottled drinking water, may be reasonably expected to contain at least small amounts of some contaminants. It's important to remember that the presence of these contaminants does not necessarily indicate that the water poses a health risk.

In this table you will find many terms and abbreviations you might not be familiar with. To help you better understand these terms we've provided the following definitions:

**Action Level** - the concentration of a contaminant which, if exceeded, triggers treatment or other requirements which a water system must follow.

**Treatment Technique (TT)** - A treatment technique is a required process intended to reduce the level of a contaminant in drinking water.

**Maximum Contaminant Level (MCL)** - The "Maximum Allowed" (MCL) is the highest level of a contaminant that is allowed in drinking water. MCLs are set as close to the MCLGs as feasible using the best available treatment technology.

**Maximum Contaminant Level Goal (MCLG)** - The "Goal" (MCLG) is the level of a contaminant in drinking water below which there is no known or expected risk to health. MCLGs allow for a margin of safety.

**Maximum Residual Disinfectant Level (MRDL)** - The highest level of a disinfectant allowed in drinking water. There is convincing evidence that addition of a disinfectant is necessary to control microbial contaminants.

**Maximum Residual Disinfectant Level Goal (MRDLG)** - The level of a drinking water disinfectant below which there is no known or expected risk of health. MRDLGs do not reflect the benefits of the use of disinfectants to control microbial contaminants.

**Level 1 Assessment:** A study of the water system to identify potential problems and determine (if possible) why total coliform bacteria have been found in our water system.

**TEST RESULTS**

Contaminant	Violation Y/N	Date Collected	Level Detected	Range of Detects or # of Samples Exceeding MCL/AQL	Unit Measurement	MCLG	MCL	Likely Source of Contamination
<b>Microbiological Contaminants</b>								
1. Total Coliform Bacteria	N	December	Positive	1	NA	0	0	presence of coliform bacteria in 5% of monthly samples
<b>Inorganic Contaminants</b>								
10. Barium	N	2016	.0059	.0058 - .0059	ppm	2	2	Discharge of drilling wastes; discharge from metal refineries; erosion of natural deposits
13. Chromium	N	2016	2.5	.7 - 2.5	ppb	100	100	Discharge from steel and pulp mills; erosion of natural deposits
14. Copper	N	2012/14*	1	0	ppm	1.3	AL=1.3	Corrosion of household plumbing systems; erosion of natural deposits; leaching from wood preservatives
16. Fluoride	N	2016	.184	.177 - .184	ppm	4	4	Erosion of natural deposits; water additive which promotes strong teeth; discharge from fertilizer and aluminum factories
17. Lead	N	2012/14*	0	0	ppb	0	AL=15	Corrosion of household plumbing systems; erosion of natural deposits
<b>Volatile Organic Contaminants</b>								
76. Xylenes	N	2016	00249	No Range	ppm	10	10	Discharge from petroleum factories; discharge from chemical factories

**Disinfection By-Products**

81. HAA5	N	2015*	26	No Range	ppb	0	60	By-product of drinking water disinfection.
82. TTHM (Total trihalomethanes)	N	2016	.46	No Range	ppb	0	80	By-product of drinking water chlorination.
Chlorine	N	2016	1	.8 - 2.2	mg/l	0	MDRL = 4	Water additive used to control microbes

\* Most recent sample. No sample required for 2016.

**Microbiological Contaminants:**

(1) Total Coliform. Coliforms are bacteria that are naturally present in the environment and are used as an indicator that other, potentially harmful, waterborne pathogens may be present or that a potential pathway exists through which contamination may enter the drinking water distribution system. We found coliform, indicating the need to look for potential problems in water treatment or distribution. When this occurs, we are required to conduct assessments (s) to identify problems and to correct any problems that were found during these assessments.

During the past year we were required to conduct 1 (one) Level 1 assessment. The assessment was completed. In addition, we were required to take and complete the necessary corrective actions. All have been completed.

As you can see by the table, our system had no contaminant violations. We're proud that your drinking water meets or exceeds all Federal and State requirements. We have learned through our monitoring and testing that some constituents have been detected however the EPA has determined that your water IS SAFE at these levels.

We are required to monitor your drinking water for specific contaminants on a monthly basis. Results of regular monitoring are an indicator of whether or not our drinking water meets health standards. We did complete the monitoring requirements for bacteriological sampling that showed no coliform present. In an effort to ensure systems complete all monitoring requirements, MSDH now notifies systems of any missing samples prior to the end of the compliance period.

If present, elevated levels of lead can cause serious health problems, especially for pregnant women and young children. Lead in drinking water is primarily from materials and components associated with service lines and home plumbing. Our water system is responsible for providing high quality drinking water, but cannot control the variety of materials used in plumbing components. When your water has been sitting for several hours, you can minimize the potential for lead exposure by flushing your tap for 30 seconds to 2 minutes before using water for drinking or cooking. If you are concerned about lead in your water, you may wish to have your water tested. Information on lead in drinking water, testing methods, and steps you can take to minimize exposure is available from the Safe Drinking Water Hotline or at <http://www.epa.gov/safewater/lead>. The Mississippi State Department of Health Public Health Laboratory offers lead testing. Please contact 601.576.7662 if you wish to have your water tested.

All sources of drinking water are subject to potential contamination by substances that are naturally occurring or man made. These substances can be microbes, inorganic or organic chemicals and radioactive substances. All drinking water, including bottled water,

may reasonably be expected to contain at least small amounts of some contaminants. The presence of contaminants does not necessarily indicate that the water poses a health risk. More information about contaminants and potential health effects can be obtained by calling the Environmental Protection Agency's Safe Drinking Water Hotline at 1-800-426-4761.

Some people may be more vulnerable to contaminants in drinking water than the general population. Immuno-compromised persons such as persons with cancer undergoing chemotherapy, persons who have undergone organ transplants, people with HIV/AIDS or other immune system disorders, some elderly, and infants can be particularly at risk from infections. These people should seek advice about drinking water from their health care providers. EPA/CDC guidelines on appropriate means to lessen the risk of infection by cryptosporidium and other microbial contaminants are available from the Safe Drinking Water Hotline 1-800-426-4761.

The Central Renkin Water Association, Inc. works around the clock to provide top quality water to every tap. We ask that all our customers help us protect our water sources, which are the heart of our community, our way of life and our children's future.

**Season passes on sale**  
**NWR Cougar football**

FLOWOOD - School has available for \$40. Fans may stop by the NWR Office to purchase 2017 season passes and chat back seats for a total of \$80, or simply \$40 for season passes. Purchasers need to write Rankin Cougar fans never miss a 2017 game, season two separate checks for the

BRANDON HIGH SCHOOL FOOTBALL  
JINGING - Brandon High School student Lakendrick Jones signs with MS Gulf Coast Community College. Family pictured are Georgia Jones, Cor- Oliver, Jonathan