

CALENDAR YEAR 2013 CONSUMER CONFIDENCE REPORT
CERTIFICATION REPORT
WHEELER-FRANKSTOWN WATER ASSOCIATION
PWS ID # ('s): 0590014

2014 JUN -3 AM 11:12

The Federal Safe Drinking Water Act requires each *community* public water system to develop and distribute a consumer confidence report (CCR) to its customers each year. Depending on the population served by the public water system, this CCR must be mailed to the customers, published in a newspaper of local circulation, or provided to the customers upon request.

Please Answer the Following Questions Regarding the Consumer Confidence Report

- Customers were informed of availability of CCR by: *(Attach copy of publication, water bill, or other)*
-
- Advertisement in local paper
- On water bills
- Other _____

Date customers were informed: 5-8-14, 5-29-14

- CCR was distributed by mail or other direct delivery. Specify other direct delivery methods:

Date mailed/distributed: _____

- CCR was published in local newspaper. *(Attach copy of published CCR and proof of publication)*
- Name of Newspaper: BANNER-INDEPENDENT
- Date Published: 5-8-14


- CCR was posted in public places. *(Attach list of locations)*

Date posted: 5-8-14

- CCR was posted on a publicly accessible internet site at the address: www: _____

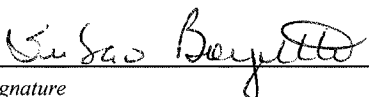
CERTIFICATION:

I hereby certify that a Consumer Confidence Report (CCR) has been distributed to the customers of this public water system in the form and manner identified above. I further certify that the information included in this CCR is true and correct and is consistent with the water quality monitoring data provided to the public water system officials by the Mississippi State Department of Health, Bureau of Public Water Supply.


Name/Title (President, Mayor, Owner, etc.)

5-7-14
Date

This Consumer Confidence Report (CCR) was completed by MS Cross Connection, LLC with information provided by the above Public Water System and is certified only to be as true & correct as the information provided.


Signature

5-1-14
Date

Mail completed form along with a copy of your CCR Report(s) before JULY 1, 2014 to:

**MS State Department of Health
Division of Public Water Supply
P O Box 1700
Jackson, MS 39215
Phone: 601-576-7518**

*Annual Drinking Water Quality Report
Wheeler-Frankstown Water Association
PWS ID # 0590014
May, 2014*

We're pleased to present to you this year's Annual Water Quality Report. This report is designed to inform you about the quality water and services we deliver to you every day. Our constant goal is to provide you with a safe and dependable supply of drinking water. We want you to understand the efforts we make to continually improve the water treatment process and protect our water resources. We are committed to ensuring the quality of your water. Our water source consists of five wells that draw from the Eutaw Formation Aquifer.

A source water assessment has been completed for the water supply to determine the overall susceptibility of its drinking water to identify potential sources of contamination.. The water supply for Wheeler-Frankstown Water Association received a moderate susceptibility ranking to contamination.

We're pleased to report that our drinking water meets all federal and state requirements.

If you have any questions about this report or concerning your water utility, please contact Jimmy Glover at 662-365-8750. We want our valued customers to be informed about their water utility. If you want to learn more, please attend any of our regularly scheduled meetings. They are held on the second Thursday of each month at the Wheeler-Frankstown Water Association office at 6:00 p.m.

Wheeler-Frankstown Water Association routinely monitors for constituents in your drinking water according to Federal and State laws. This table shows the results of our monitoring for the period of January 1st to December 31st, 2013. As water travels over the land or underground, it can pick up substances or contaminants such as microbes, inorganic and organic chemicals, and radioactive substances. All drinking water, including bottled drinking water, may be reasonably expected to contain at least small amounts of some constituents. It's important to remember that the presence of these constituents does not necessarily pose a health risk.

In this table you will find many terms and abbreviations you might not be familiar with. To help you better understand these terms we've provided the following definitions:

Action Level - the concentration of a contaminant which, if exceeded, triggers treatment or other requirements which a water system must follow.

Treatment Technique (TT) - A treatment technique is a required process intended to reduce the level of a contaminant in drinking water.

Maximum Contaminant Level - The "Maximum Allowed" (MCL) is the highest level of a contaminant that is allowed in drinking water. MCLs are set as close to the MCLGs as feasible using the best available treatment technology.

Maximum Contaminant Level Goal - The "Goal"(MCLG) is the level of a contaminant in drinking water below which there is no known or expected risk to health. MCLGs allow for a margin of safety.

TEST RESULTS

Contaminant	Violation Y/N	Date Collected	Level Detected	Range of Detects or # of Samples Exceeding MCL/ACL	Unit Measurement	MCLG	MCL	Likely Source of Contamination
Radioactive Contaminants								
6. Combined radium	N	2011*	.630	None	PCI/1	0	5	Erosion of natural deposits
Inorganic Contaminants								
10. Barium	N		0.1142	No Range	Ppm	2	2	Discharge of drilling wastes; discharge from metal refineries; erosion of natural deposits
13. Chromium	N		1.2	No Range	Ppb	100	100	Discharge from steel and pulp mills; erosion of natural deposits
14. Copper	N	1/1/10 to 12/31/12*	0.1	None	ppm	1.3	AL=1.3	Corrosion of household plumbing systems; erosion of natural deposits; leaching from wood preservatives
17. Lead	N	1/1/10 to 12/31/12*	1	None	ppb	0	AL=15	Corrosion of household plumbing systems, erosion of natural deposits
Nickel**	N		.0033	No Range	ppm	0.1	0.1	Discharge from chemical factories, metal refineries and petroleum refineries
Volatile Organic Contaminants								
66. Ethylbenzene	N		1.34	None	ppb	700	700	Discharge from petroleum refineries
76. Xylenes	N		3.54	None	ppm	10	10	Discharge from petroleum factories; discharge from chemical factories
Disinfectants & Disinfectant By-Products								
Chlorine (as Cl ₂)	N	1/1/13 to 12/31/13	0.90	0.50 to 1.40	ppm	4	4	Water additive used to control microbes
73. TTHM [Total tri-halomethanes]	N		1.11	None	ppb	0	80	\By-product of drinking water chlorination

* Most recent sample results available

** Unregulated Contaminant

Additional Information for Lead

If present, elevated levels of lead can cause serious health problems, especially for pregnant women and young children. Lead in drinking water is primarily from materials and components associated with service lines and home plumbing. Wheeler-Frankstown Water Association is responsible for providing high quality drinking water, but cannot control the variety of materials used in plumbing components. When your water has been sitting for several hours, you can minimize the potential for lead exposure by flushing your tap for 30 seconds to 2 minutes before using water for drinking or cooking. If you are concerned about lead in your water, you may wish to have your water tested. Information on lead in drinking water, testing methods, and steps you can take to minimize exposure is available from the Safe Drinking Water Hotline or at <http://www.epa.gov/safewater/lead>. The Mississippi State Department of Health Public Health Laboratory offers lead testing for \$10 per sample. Please contact 601.576.7582 if you wish to have your water tested..

All sources of drinking water are subject to potential contamination by substances that are naturally occurring or man made. These substances can be microbes, inorganic or organic chemicals and radioactive substances. All drinking water, including bottled water, may reasonably be expected to contain at least small amounts of some contaminants. The presence of contaminants does not necessarily indicate that the water poses a health risk. More information about contaminants and potential health effects can be obtained by calling the Environmental Protection Agency's Safe Drinking Water Hotline at 1-800-426-4791.

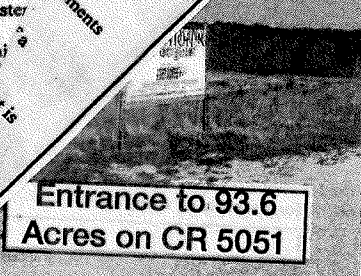
Some people may be more vulnerable to contaminants in drinking water than the general population. Immuno-compromised persons such as persons with cancer undergoing chemotherapy, persons who have undergone organ transplants, people with HIV/AIDS or other immune system disorders, some elderly, and infants can be particularly at risk from infections. These people should seek advice about drinking water from their health care providers. EPA/CDC guidelines on appropriate means to lessen the risk of infection by cryptosporidium and other microbiological contaminants are available from the Safe Drinking Water Hotline (800-426-4791).

This report being published in the paper will not be mailed. Please call our office if you would like a copy or you have questions. 662-365-8750

\$ 305⁴⁰ .xx

Annual Drinking Water Quality Report
Wheeler-Frankstown Water Association
PWS ID #
May

We're pleased to present to you this year's Annual Drinking Water Quality Report. This report is designed to inform you about the quality water and services we deliver to you and our goal is to provide you with a safe and dependable supply of drinking water. We want you to know that we make it our priority to continually improve the water treatment process and protect our water resources. Our water source consists of five wells that draw from the...
A source water assessment has been completed to identify potential sources of contamination for Wheeler-Frankstown Water Association received a moderate susceptibility...
We're pleased to report that our drinking water is safe to drink. Our water is safe to drink because we have...
If you have any questions about this report, please contact Jiminy Glover at 662-365-8750. We want our valued customers to know that we are here to help. Please attend to each month at the Wheeler-Frankstown Water Association office...
Wheeler-Frankstown Water Association is committed to providing you with the highest quality water possible. We are committed to providing you with the highest quality water possible...
In this table you will find information that will help you better understand these terms...



SELLING
Locate

Tract 1 - 5.56 Acres
North College St.
Tract 2 -
North C

SELLING
NORTH COLLEGE ST.
OFFERING IN 5 TRACTS A
REAL ESTATE TERMS: Cash, personal or corporate
delivery of deed in 20 days

PROOF OF PUBLICATION

STATE OF MISSISSIPPI
COUNTY OF PRENTISS

BEFORE ME, Jessica Brown
a Notary Public in and for said county, or other official qualified to administer oaths, this day personally came the undersigned official of The Banner-Independent, a newspaper published weekly in the City of Booneville, in Prentiss County, State of Mississippi, who, being duly sworn, states that the notice, a true copy of which is hereto attached, was published in the aforesaid newspaper for one consecutive weeks to-wit

- Vol. 117, Number 13, May 08, 2014
- Vol. _____, Number _____, _____, 20____
- Vol. _____, Number _____, _____, 20____
- Vol. _____, Number _____, _____, 20____
- Vol. _____, Number _____, _____, 20____
- Vol. _____, Number _____, _____, 20____
- Vol. _____, Number _____, _____, 20____

Brent Sapp
Editor

Witness my signature this 8th day of May, 2014



Jessica Brown
Notary Public
Dec-24-2017
My Commission Expires

Filed this the _____ day of _____, 20____

2014 JUN -3 AM 11: 12

WATER BILL

06-10-14	05-29-14	06-10-14	05-05-14	2065200
WATER	15.00	WATER	15.00	2065200

SEWER	1.00	SEWER	1.00
-------	------	-------	------

003160	15.00	003160	16.00	800
06-10-14	17.50	PAID FOR BY BANK DRAFT 06-10-14 COPY OF 2014 CCR REPORT AVAILABLE UPON REQUEST AT WATER OFFICE.		

KEITH WALLIS
 5981 CURRY FORD RD APT 324
 ORLANDO FL 32822

Wheeler-Frankstown Water Association

(662) 365-8750

WHEELER WATER SUPPLY

2014 JUN -3 AM 11:12

P.O. Box 157
Wheeler, Mississippi 38880

GEORGE E. ALLEN LIBRARY, BOONEVILLE MS

WHEELER WATER OFFICE, WHEELER, MS

WHEELER, POST OFFICE, WHEELER, MS