

2013 JUN -4 AM 9: 02

MISSISSIPPI STATE DEPARTMENT OF HEALTH  
BUREAU OF PUBLIC WATER SUPPLY  
CCR CERTIFICATION FORM  
CALENDAR YEAR 2012

City of Magnolia  
Public Water Supply Name

0570005  
List PWS ID #s for all Community Water Systems included in this CCR

The Federal Safe Drinking Water Act (SDWA) requires each Community public water system to develop and distribute a Consumer Confidence Report (CCR) to its customers each year. Depending on the population served by the public water system, this CCR must be mailed or delivered to the customers, published in a newspaper of local circulation, or provided to the customers upon request. Make sure you follow the proper procedures when distributing the CCR. Since this is the first year of electronic delivery, we request you mail or fax a hard copy of the CCR and Certification Form to MSDH. Please check all boxes that apply.

- Customers were informed of availability of CCR by: (*Attach copy of publication, water bill or other*)
  - Advertisement in local paper (attach copy of advertisement)
  - On water bills (attach copy of bill)
  - Email message (MUST Email the message to the address below)
  - Other \_\_\_\_\_

Date(s) customers were informed: \_\_\_ / \_\_\_ / \_\_\_ , \_\_\_ / \_\_\_ / \_\_\_ , \_\_\_ / \_\_\_ / \_\_\_

- CCR was distributed by U.S. Postal Service or other direct delivery. Must specify other direct delivery methods used \_\_\_\_\_

Date Mailed/Distributed: \_\_\_ / \_\_\_ / \_\_\_

- CCR was distributed by Email (MUST Email MSDH a copy) Date Emailed: \_\_\_ / \_\_\_ / \_\_\_
  - As a URL (Provide URL \_\_\_\_\_)
  - As an attachment
  - As text within the body of the email message

- CCR was published in local newspaper. (*Attach copy of published CCR or proof of publication*)

Name of Newspaper: Magnolia Gazette

Date Published: 5/16/2013 & 5/23/2013

- CCR was posted in public places. (*Attach list of locations*) Date Posted: \_\_\_ / \_\_\_ / \_\_\_

- CCR was posted on a publicly accessible internet site at the following address (DIRECT URL REQUIRED): \_\_\_\_\_

**CERTIFICATION**

I hereby certify that the 2012 Consumer Confidence Report (CCR) has been distributed to the customers of this public water system in the form and manner identified above and that I used distribution methods allowed by the SDWA. I further certify that the information included in this CCR is true and correct and is consistent with the water quality monitoring data provided to the public water system officials by the Mississippi State Department of Health, Bureau of Public Water Supply.

Melanie D. Yankowski  
Name/Title (President, Mayor, Owner, etc.)

6/2/13  
Date

Deliver or send via U.S. Postal Service:  
Bureau of Public Water Supply  
P.O. Box 1700  
Jackson, MS 39215

May be faxed to:  
(601)576-7800

May be emailed to:  
Melanie.Yankowski@msdh.state.ms.us

2012 Annual Drinking Water Quality Report  
 City of Magnolia  
 PWS#: 0570005  
 May 2013

We're pleased to present to you this year's Annual Quality Water Report. This report is designed to inform you about the quality water and services we deliver to you every day. Our constant goal is to provide you with a safe and dependable supply of drinking water. We want you to understand the efforts we make to continually improve the water treatment process and protect our water resources. We are committed to ensuring the quality of your water. Our water source is from wells drawing from the Miocene Series Aquifer.

The source water assessment has been completed for our public water system to determine the overall susceptibility of its drinking water supply to identified potential sources of contamination. A report containing detailed information on how the susceptibility determinations were made has been furnished to our public water system and is available for viewing upon request. The wells for the City of Magnolia have received moderate susceptibility rankings to contamination.

If you have any questions about this report or concerning your water utility, please contact Alice Barnes at 601.248.7458. We want our valued customers to be informed about their water utility. If you want to learn more, please attend any of our regularly scheduled meetings. They are held on the first Tuesday of the month at 5:30 PM at City Hall.

We routinely monitor for constituents in your drinking water according to Federal and State laws. This table below lists all of the drinking water contaminants that were detected during the period of January 1<sup>st</sup> to December 31<sup>st</sup>, 2012. In cases where monitoring wasn't required in 2012, the table reflects the most recent results. As water travels over the surface of land or underground, it dissolves naturally occurring minerals and, in some cases, radioactive materials and can pick up substances or contaminants from the presence of animals or from human activity; microbial contaminants, such as viruses and bacteria, that may come from sewage treatment plants, septic systems, agricultural livestock operations, and wildlife; inorganic contaminants, such as salts and metals, which can be naturally occurring or result from urban storm-water runoff, industrial, or domestic wastewater discharges, oil and gas production, mining, or farming; pesticides and herbicides, which may come from a variety of sources such as agriculture, urban storm-water runoff, and residential uses; organic chemical contaminants, including synthetic and volatile organic chemicals, which are by-products of industrial processes and petroleum production, and can also come from gas stations and septic systems; radioactive contaminants, which can be naturally occurring or be the result of oil and gas production and mining activities. In order to ensure that tap water is safe to drink, EPA prescribes regulations that limit the amount of certain contaminants in water provided by public water systems. All drinking water, including bottled drinking water, may be reasonably expected to contain at least small amounts of some constituents. It's important to remember that the presence of these constituents does not necessarily indicate that the water poses a health risk.

In this table you will find many terms and abbreviations you might not be familiar with. To help you better understand these terms we've provided the following definitions:

**Action Level** - the concentration of a contaminant which, if exceeded, triggers treatment or other requirements which a water system must follow.

**Maximum Contaminant Level (MCL)** - The "Maximum Allowed" (MCL) is the highest level of a contaminant that is allowed in drinking water. MCLs are set as close to the MCLGs as feasible using the best available treatment technology.

**Maximum Contaminant Level Goal (MCLG)** - The "Goal"(MCLG) is the level of a contaminant in drinking water below which there is no known or expected risk to health. MCLGs allow for a margin of safety.

**Maximum Residual Disinfectant Level (MRDL)** - The highest level of a disinfectant allowed in drinking water. There is convincing evidence that addition of a disinfectant is necessary for control microbial contaminants.

**Maximum Residual Disinfectant Level Goal (MRDLG)** - The level of a drinking water disinfectant below which there is no known or expected risk of health. MRDLGs do not reflect the benefits of the use of disinfectants to control microbial contaminants.

**Parts per million (ppm) or Milligrams per liter (mg/l)** - one part per million corresponds to one minute in two years or a single penny in \$10,000.

**Parts per billion (ppb) or Micrograms per liter** - one part per billion corresponds to one minute in 2,000 years, or a single penny in \$10,000,000.

TEST RESULTS								
Contaminant	Violation Y/N	Date Collected	Level Detected	Range of Detects or # of Samples Exceeding MCL/ACL	Unit Measure-ment	MCLG	MCL	Likely Source of Contamination
<b>Inorganic Contaminants</b>								
8. Arsenic	N	2010*	1.3	1.5 - 1.3	ppm	n/a	10	Erosion of natural deposits; runoff from orchards; runoff from glass and electronics production wastes

10. Barium	N	2010*	.028	.016 - .028	ppm	2	2	Discharge of drilling wastes; discharge from metal refineries; erosion of natural deposits
14. Copper	N	2009/11*	.2	0	ppm	1.3	AL=1.3	Corrosion of household plumbing systems; erosion of natural deposits; leaching from wood preservatives
16. Fluoride**	N	2010*	1.16	.234 – 1.16	ppm	4	4	Erosion of natural deposits; water additive which promotes strong teeth; discharge from fertilizer and aluminum factories
17. Lead	N	2009/11*	1	0	ppb	0	AL=15	Corrosion of household plumbing systems, erosion of natural deposits
<b>Disinfection By-Products</b>								
Chlorine	N	2012	1.5	.8 – 1.5	mg/l	0	MDRL = 4	Water additive used to control microbes

\* Most recent sample. No sample required for 2012.

\*\* Fluoride level is routinely adjusted to the MS State Dept of Health's recommended level of 0.7 - 1.3 mg/l.

Our system received a CCR Report violation for not submitting this report in 2012 by the July 1<sup>st</sup> deadline.

We are required to monitor your drinking water for specific constituents on a monthly basis. Results of regular monitoring are an indicator of whether or not our drinking water meets health standards. We did complete the monitoring requirements for bacteriological sampling that showed no coliform present. In an effort to ensure systems complete all monitoring requirements, MSDH now notifies systems of any missing samples prior to the end of the compliance period.

If present, elevated levels of lead can cause serious health problems, especially for pregnant women and young children. Lead in drinking water is primarily from materials and components associated with service lines and home plumbing. Our Water Association is responsible for providing high quality drinking water, but cannot control the variety of materials used in plumbing components. When your water has been sitting for several hours, you can minimize the potential for lead exposure by flushing your tap for 30 seconds to 2 minutes before using water for drinking or cooking. If you are concerned about lead in your water, you may wish to have your water tested. Information on lead in drinking water, testing methods, and steps you can take to minimize exposure is available from the Safe Drinking Water Hotline or at <http://www.epa.gov/safewater/lead>.

To comply with the "Regulation Governing Fluoridation of Community Water Supplies", our system is required to report certain results pertaining to fluoridation of our water system. The number of months in the previous calendar year in which average fluoride sample results were within the optimal range of 0.7-1.3 ppm was 3. The percentage of fluoride samples collected in the previous calendar year that was within the optimal range of 0.7-1.3 ppm was 44%.

All sources of drinking water are subject to potential contamination by substances that are naturally occurring or man made. These substances can be microbes, inorganic or organic chemicals and radioactive substances. All drinking water, including bottled water, may reasonably be expected to contain at least small amounts of some contaminants. The presence of contaminants does not necessarily indicate that the water poses a health risk. More information about contaminants and potential health effects can be obtained by calling the Environmental Protection Agency's Safe Drinking Water Hotline at 1-800-426-4791.

Some people may be more vulnerable to contaminants in drinking water than the general population. Immuno-compromised persons such as persons with cancer undergoing chemotherapy, persons who have undergone organ transplants, people with HIV/AIDS or other immune system disorders, some elderly, and infants can be particularly at risk from infections. These people should seek advice about drinking water from their health care providers. EPA/CDC guidelines on appropriate means to lessen the risk of infection by cryptosporidium and other microbiological contaminants are available from the Safe Drinking Water Hotline 1-800-426-4791.

**\*\*\*\*\*April 1, 2013 MESSAGE FROM MSDH CONCERNING RADIOLOGICAL SAMPLING\*\*\*\*\***

In accordance with the Radionuclides Rule, all community public water supplies were required to sample quarterly for radionuclides beginning January 2007 – December 2007. Your public water supply completed sampling by the scheduled deadline; however, during an audit of the Mississippi State Department of Health Radiological Health Laboratory, the Environmental Protection Agency (EPA) suspended analyses and reporting of radiological compliance samples and results until further notice. Although this was not the result of inaction by the public water supply, MSDH was required to issue a violation. This is to notify you that as of this date, your water system has completed the monitoring requirements and is now in compliance with the Radionuclides Rule. If you have any questions, please contact Karen Walters, Director of Compliance & Enforcement, Bureau of Public Water Supply, at 601.576.7518.

The City of Magnolia works around the clock to provide top quality water to every tap. We ask that all our customers help us protect our water sources, which are the heart of our community, our way of life and our children's future.

2013 JUN -4 AM 9: 02

**PROOF OF PUBLICATION**

**STATE OF MISSISSIPPI  
PIKE COUNTY**

PERSONALLY appeared before me, the undersigned notary public in and for Pike County, Mississippi, Nancy Morris, An authorized clerk of **THE MAGNOLIA GAZETTE**, a weekly newspaper as defined and prescribed in Sections 13-3-31 and 13-3-32, of the Mississippi Code of 1972, as amended, who, being duly sworn, states that the notice, a true copy of which is hereto attached, appeared in the issues of said newspaper as follows.

Date 5/16, 2013  
Date 5/23, 2013  
Date \_\_\_\_\_, 20\_\_\_\_  
Date \_\_\_\_\_, 20\_\_\_\_  
Date \_\_\_\_\_, 20\_\_\_\_

Number of Lines/Words by size  
Published 2 Times

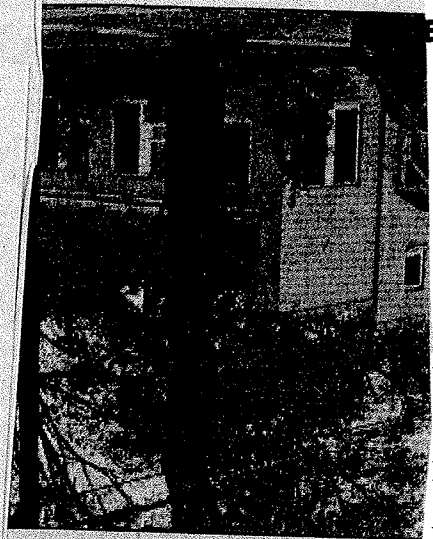
Total \$ \$216.00 + \$3.00 proof charge (\$219.00 total)

Signed Nancy Morris  
Authorized Clerk of  
*The Magnolia Gazette*

30th day of May, 2013

Louise L. Langston  
Notary Public

My Commission Expires:



Time Spec  
05 North Cherry Street  
Mem  
[Logo]

601-783-244

5/16 and  
The  
en by God, The  
mmate Giver, and  
s us to become  
f the solution to  
d not part of the  
ny of it. If we trust,  
ps us reconciled  
ommitted to live  
hat is in our lives.  
oly One is con-  
taking our own  
in the midst of an  
dictable world,  
ke a Generous  
ist, is turning it  
mos: something  
iously miracu-  
d meant to teach  
e there reasons  
rust this? I think  
ink not.

ass@aol.com

orm

or more infor-  
sell 601-783

We're pleased to present to you this year's Annual Quality Water Report. This report is designed to inform you about the quality water and services we deliver to you every day. Our constant goal is to provide you with a safe and dependable supply of drinking water. We want you to understand the efforts we make to continually improve the water treatment process and protect our water resources. We are committed to ensuring the quality of your water. Our water source is from wells drawing from the Micoone Series Aquifer.

The source water assessment has been completed for our public water system to determine the overall susceptibility of its drinking water supply to identified potential sources of contamination. A report containing detailed information on how the susceptibility determinations were made has been furnished to our public water system and is available for viewing upon request. The wells for the City of Magnolia have received moderate susceptibility rankings to contamination.

If you have any questions about this report or concerning your water utility, please contact Alice Barnes at 601.246.7456. We want our valued customers to be informed about their water utility. If you want to learn more, please attend any of our regularly scheduled meetings. They are held on the first Tuesday of the month at 5:30 PM at City Hall.

We routinely monitor for contaminants in your drinking water according to Federal and State laws. This table below lists all of the drinking water contaminants that were detected during the period of January 1<sup>st</sup> to December 31<sup>st</sup>, 2012. In cases where monitoring wasn't required in 2012, this table reflects the most recent results. As water travels over the surface of land or underground, it dissolves naturally occurring minerals and, in some cases, radioactive materials and can pick up substances or contaminants from the presence of animals or from human activity, microbial contaminants, such as viruses and bacteria, that may come from septic treatment plants, septic systems, agricultural livestock operations, and wildlife; inorganic contaminants, such as salts and metals, which can be naturally occurring or result from urban storm-water runoff, industrial, or domestic wastewater discharges, oil and gas production, mining, and residential uses; agricultural pesticides and herbicides, which may come from a variety of sources such as agriculture, urban storm-water runoff, and residential uses; organic chemical contaminants, including synthetic and volatile organic chemicals, which are by-products of industrial processes and petroleum production, and can also come from gas stations and auto-repair systems; radioactive contaminants, which can be naturally occurring or be the result of oil and gas production and mining activities. In order to ensure that tap water is safe to drink, EPA prescribes regulations that limit the amount of certain contaminants in water provided by public water systems. All drinking water, including bottled drinking water, may be reasonably expected to contain at least small amounts of some contaminants. It is important to remember that the presence of these constituents does not necessarily indicate that the water poses a health risk.

In this table you will find many terms and abbreviations you might not be familiar with. To help you better understand these terms we've provided the following definitions:

**Action Level** - the concentration of a contaminant which, if exceeded, triggers treatment or other requirements which a water system must follow.

**Maximum Contaminant Level (MCL)** - The "Maximum Allowed" (MCL) is the highest level of a contaminant that is allowed in drinking water. MCLs are set as close to the MCLGs as feasible using the best available treatment technology.

**Maximum Contaminant Level Goal (MCLG)** - The "Goal" (MCLG) is the level of a contaminant in drinking water below which there is no known or expected risk to health. MCLGs allow for a margin of safety.

**Maximum Residual Disinfectant Level (MRDL)** - The highest level of a disinfectant allowed in drinking water. There is convincing evidence that addition of a disinfectant is necessary for control microbial contaminants.

**Maximum Residual Disinfectant Level Goal (MRDLG)** - The level of a drinking water disinfectant below which there is no known or expected risk of health. MRDLGs do not reflect the benefits of the use of disinfectants to control microbial contaminants.

**Parts per million (ppm) or Milligrams per liter (mg/L)** - one part per million corresponds to one minute in two years or a single penny in \$10,000.

**Parts per billion (ppb) or Micrograms per liter (µg/L)** - one part per billion corresponds to one minute in 2,000 years, or a single penny in \$10,000,000.

**TEST RESULTS**

Contaminant	Violation Y/N	Date Collected	Level Detected	Range of Detects or # of Samples Exceeding MCL/AEL	Unit Measure	MCLG	MCL	Likely Source of Contamination
<b>Inorganic Contaminants</b>								
8. Arsenic	N	2012*	1.3	1.5 - 1.3	ppm	n/a	10	Erosion of natural deposits; runoff from orchards; runoff from glass and electronics production wastes.
10. Barium	N	2012*	628	016 - 628	ppm	2	1	Discharge of drilling wastes; discharge from metal refineries; erosion of natural deposits.
14. Copper	N	2008/11**	2	0	ppm	1.3	AL=1.3	Corrosion of household plumbing systems; erosion of natural deposits; leaching from wood preservatives.
16. Fluoride**	N	2012*	1.16	234 - 1.16	ppm	4	4	Erosion of natural deposits; water additive which promotes strong teeth; discharge from fertilizer and aluminum factories.
17. Lead	N	2008/11**	1	0	ppb	0	AL=15	Corrosion of household plumbing systems; erosion of natural deposits.
<b>Disinfection By-Products</b>								
Chlorine	N	2012	1.8	1 - 1.8	mg/L	0	MRDL=4	Water additive used to control microbes.

\* Most recent sample. No sample required for 2012.  
 \*\* Fluoride level is routinely adjusted to the MS State Dept of Health's recommended level of 0.7 - 1.3 mg/L.

Our system received a CCR Report violation for not submitting this report in 2012 by the July 1<sup>st</sup> deadline.

We are required to monitor your drinking water for specific constituents on a monthly basis. Results of regular monitoring are an indicator of whether or not our drinking water meets health standards. We did complete the monitoring requirements for bacteriological sampling that showed no coliforms present. In an effort to ensure systems complete all monitoring requirements, MSDH now notifies systems of any missing samples prior to the end of the compliance period.

If present, elevated levels of lead can cause serious health problems, especially for pregnant women and young children. Lead in drinking water is primarily from materials and components associated with service lines and home plumbing. Our Water Association is responsible for providing high quality drinking water, but cannot control the variety of materials used in plumbing components. When your water has been sitting for several hours, you can minimize the potential for lead exposure by flushing your tap for 30 seconds to 2 minutes before using water for drinking or cooking. If you are concerned about lead in your water, you may wish to have your water tested. Information on lead in drinking water, testing methods, and steps you can take to minimize exposure is available from the Safe Drinking Water Hotline or at <http://www.epa.gov/lead>.

To comply with the "Regulation Governing Fluoridation of Community Water Supplies", our system is required to report certain results pertaining to fluoridation of our water system. The number of months in the previous calendar year in which average fluoride sample results were within the optimal range of 0.7-1.3 ppm was 3. The percentage of fluoride samples collected in the previous calendar year that was within the optimal range of 0.7-1.3 ppm was 44%.

All sources of drinking water are subject to potential contamination by substances that are naturally occurring or man made. These substances can be microbes, inorganic or organic chemicals and radioactive substances. All drinking water, including bottled water, may reasonably be expected to contain at least small amounts of some contaminants. The presence of contaminants does not necessarily indicate that the water poses a health risk. More information about contaminants and potential health effects can be obtained by calling the Environmental Protection Agency's Safe Drinking Water Hotline at 1-800-426-4791.

Some people may be more vulnerable to contaminants in drinking water than the general population. Immunocompromised persons such as persons with cancer undergoing chemotherapy, persons who have undergone organ transplants, people with HIV/AIDS or other immune system disorders, some elderly, and infants can be particularly at risk from infections. These people should seek advice about drinking water from their health care providers. EPA/CDC guidelines on appropriate means to lessen the risk of infection by cryptosporidium and other microbiological contaminants are available from the Safe Drinking Water Hotline 1-800-426-4791.

**April 1, 2013 MESSAGE FROM MSDH CONCERNING RADIOLOGICAL SAMPLING**

In accordance with the Radon/uranium rule, all community public water supplies were required to sample quarterly for radionuclides beginning January 2007 - December 2007. Your public water supply completed sampling by the scheduled deadline; however, during an audit of the Mississippi State Department of Health Radiological Health Laboratory, the Environmental Protection Agency (EPA) suspended analysis and reporting of radiological compliance samples and results until further notice. Although this was not the result of inaction by the public water supply, MSDH was required to issue a violation. This is to notify you that as of this date, your water system has completed the monitoring requirements and is now in compliance with the Radionuclides Rule. If you have any questions, please contact Karen Walters, Director of Compliance & Enforcement, Bureau of Public Water Supply, at 601.578.7518.

The City of Magnolia works around the clock to provide top quality water to every tap. We ask that all our customers help us protect our water sources, which are the heart of our community, our way of life and our children's future.

PERSONALLY appeared before me, the undersigned notary public in and for Pike County, Mississippi, Nancy Morris An authorized clerk of THE MAGNOLIA GAZETTE, a weekly newspaper as defined prescribed in Sections 13-3-31 and 13-3-32, Mississippi Code of 1972, as amended, who duly sworn, states that the notice, a true copy which is hereto attached, appeared in the is of said newspaper as follows.

Date 5/16  
 Date 5/23  
 Date \_\_\_\_\_  
 Date \_\_\_\_\_  
 Date \_\_\_\_\_  
 Number of Lines/Words by size  
 Published 2  
 Total \$ \$216.00 + \$3.00 print  
 Signed Nancy Morris  
 Authorized Clerk of  
The Magnolia Gazette  
 on 30th day of May

James L. Lyle  
 Notary Public