

2012 JUN 26 AM 9: 12

**BUREAU OF PUBLIC WATER SUPPLY**  
**CALENDAR YEAR 2011 CONSUMER CONFIDENCE REPORT**  
**CERTIFICATION FORM**

South Central Water Association, Inc.  
 Public Water Supply Name

0250022  
 List PWS ID #s for all Water Systems Covered by this CCR

The Federal Safe Drinking Water Act requires each *community* public water system to develop and distribute a consumer confidence report (CCR) to its customers each year. Depending on the population served by the public water system, this CCR must be mailed to the customers, published in a newspaper of local circulation, or provided to the customers upon request.

***Please Answer the Following Questions Regarding the Consumer Confidence Report***

- Customers were informed of availability of CCR by: *(Attach copy of publication, water bill or other)*
- Advertisement in local paper  
 On water bills  
 Other Sent with monthly water bills

Date customers were informed: 6 / 29 / 12

- CCR was distributed by mail or other direct delivery. Specify other direct delivery methods:

Date Mailed/Distributed: 6 / 26 / 12

- CCR was published in local newspaper. *(Attach copy of published CCR or proof of publication)*

Name of Newspaper: \_\_\_\_\_

Date Published:    /   /   

- CCR was posted in public places. *(Attach list of locations)*

Date Posted:    /   /   

- CCR was posted on a publicly accessible internet site at the address: www. \_\_\_\_\_

**CERTIFICATION**

I hereby certify that a consumer confidence report (CCR) has been distributed to the customers of this public water system in the form and manner identified above. I further certify that the information included in this CCR is true and correct and is consistent with the water quality monitoring data provided to the public water system officials by the Mississippi State Department of Health, Bureau of Public Water Supply.

 General Manager  
 Name/Title (President, Mayor, Owner, etc.)

June 26, 2012  
 Date

*Mail Completed Form to: Bureau of Public Water Supply/P.O. Box 1700/Jackson, MS 39215*  
*Phone: 601-576-7518*

# Annual Water Quality Report

South Central Water Association, Inc.

CORRECTED

June 26, 2012

PWN ID: 0250022

We are pleased to present to you this year's Annual Quality Water Report. This report is designed to inform you about the quality water and services we deliver to you each day. Included are details about where your water comes from, what it contains, and how it compares to Environmental Protection Agency (EPA) and state standards. Our constant goal is to provide you with a safe and dependable supply of drinking water. We want you to understand the efforts we make to continually improve the water treatment process and protect our water resources. We are committed to ensuring the quality of your water.

Last year, as in years past, we test for many inorganic contaminants and organic chemical contaminants. We detected SCWA had a higher level than the state allows in HAA5 for the third quarter of 2011. The amount was 0.087 and the allowance is 0.050. For more information, see the paragraph on the back marked HAA5 Violation.

If you have any questions about this report or concerning your water utility, please contact Louis C. "Buddy" Hand, General Manager, at 601-878-9639 during regular business hours from 8:00 am to 4:30 pm. If you want to learn more about the system, please attend our Annual Meeting on Tuesday, September 25, 2012, at 7:30 pm at the Mississippi Rural Water Association office; 5400 Midway Road at Highway 18.

Our water is drawn from the Forest Hill Sand Aquifer and Sparta Aquifer. SCWA routinely monitors for constituents in your drinking water according to Federal and State laws. As water travels over the land or underground, it may pick up substances or contaminants such as microbes, inorganic or organic chemicals, and radioactive substances. All sources of drinking water are subject to potential contamination by substances that are naturally occurring or man made. Drinking water, including bottled water, may reasonably be expected to contain at least small amounts of some contaminants. It is important to remember that the presence of these constituents does not necessarily indicate that water poses a health risk. Your water is treated with chlorine, a disinfectant to kill dangerous bacteria and microorganisms that may be in the water. More information about contaminants and potential health effects can be obtained by calling the Environmental Protection Agency's Safe Drinking Water Hotline at 1-800-426-4791.

Our source water assessment has been completed and our wells were ranked from Lower to Moderate in terms of susceptibility to contamination. To see a copy of the report please contact our office at 601-878-9639.

In the following table you will find many terms and abbreviations you might not be familiar with. To help you better understand these terms we have provided the following definitions.

## Contaminants that may be present in source water before we treat it include:

- **Microbial contaminants**, such as viruses and bacteria which may come from sewage treatment plants, septic systems, agricultural livestock operations and wildlife.
- **Inorganic contaminants**, such as salts and metals, which can be naturally-occurring or result from urban storm-water runoff, industrial or domestic wastewater discharges, oil and gas production, mining or farming.
- **Pesticides and herbicides**, which may come from a variety of sources such as agriculture, urban storm-water runoff, and residential uses.
- **Radioactive contaminants**, which are naturally occurring or be the result of oil and gas production and mining activities.
- **Organic chemical contaminants**, including synthetic and volatile organic chemicals, which are by-products of industrial processes and petroleum production, and can also come from gas stations, urban storm-water runoff, and septic systems.

## Terms & Abbreviations Used Below:

- **MCLG**-Maximum Contaminant Level Goal: the level of a contaminant in drinking water below which there is no known or expected risk to health. MCLGs allow for a margin of safety.
- **MCL**-Maximum Contaminant Level: the highest level of a contaminant that is allowed in drinking water. MCLs are set as close to the MCLGs as feasible using the best available treatment technology.
- **AL**-Action Level: the concentration of a contaminant which, when exceeded, triggers treatment or other requirements which a water system must follow.
- **MRDLG**-Maximum Residual Disinfection Level Goal: The level of a drinking water disinfectant below which there is no known or expected risk to health. MRDLGs do not reflect the benefits of the use of disinfectants to control microbial contaminants.
- **MRDL**-Maximum Residual Disinfectant Level: The highest level of a disinfectant allowed in drinking water. There is convincing evidence that addition of a disinfectant is necessary for control of microbial contaminants.
- **NA**: not applicable
- **ppb**: parts per billion or micrograms per liter
- **ppm**: parts per million or milligrams per liter
- **pCi/L**: picocuries per liter is a measure of the radioactivity in water
- **ug/L**: Number of micrograms of substance in one liter of water

The following table lists all of the drinking water contaminants that we detected during the calendar year of this report. The presence of contaminants in the water does not necessarily indicate that the water poses a health risk. Unless otherwise noted, the data presented in this table is from testing done in the calendar year of the report. The EPA or the State requires us to monitor for certain contaminants less than once per year because the concentrations of these contaminants do not vary significantly from year to year, or the system is not considered vulnerable to this type of contamination. As such, some of our data, though representative, may be more than one year old.

Contaminants(units)	MCLG or MRDLG	MCL, TT, or MRDL	Your Water	Range Low High	Sample Date	Violation	Typical Source
<b>Disinfection By-Products</b>							
Chlorine (as C12)(ppm)	4	4	1.51	0.95 - 1.91	2011	No	Water additive used to control microbes
TTHMs [Total Trihalomethanes](ppb)	NA	0.060	0.048	NA	Average for year 2011	No	By product of drinking water chlorination
HAA5 [Haloacetic Acids](ppb)	NA	0.080	0.057	NA		No	By product of drinking water disinfection
<b>Inorganic Contaminants</b>							
Barium (ppm)	2	2	0.0026	NA	2011	No	Discharge of drilling wastes; discharge from metal refineries; erosion of natural deposits
Chromium [total] (ppm)	0.1	0.1	.0005	NA	2011	No	Discharge from steel and pulp mills; Erosion of natural deposits
Copper (ppm)	1.3	AL=1.3	0.7 mg/L	NA	2010	No	Corrosion of household plumbing systems; erosion of natural deposits, leaching from wood preservatives
Fluoride (ppm)	4	4	0.192	NA	2011	No	Erosion of natural deposits; Water additive which promotes strong teeth; discharge from fertilizer and aluminum factories
Lead(ppb)	0	AL=.015	0.004 mg/L	NA	2010	No	Corrosion of household plumbing systems; erosion of natural deposits
Nitrate(ppm)	10	10	<0.08	N/A	2011	No	Runoff from fertilizer use; Leaching from septic tanks, sewage; Erosion of natural deposits
Nitrite (ppm)	1	1	<0.02	N/A	2011	No	Runoff from fertilizer use; Leaching from septic tanks, sewage; Erosion of natural deposits
Selenium(ppm)	0.05	0.05	0.0025	NA	2011	No	Discharge from petroleum metal refineries; Erosion of natural deposits; Discharge from mines

If present, elevated levels of lead can cause serious health problems, especially for pregnant women and young children. Lead in drinking water is primarily from materials and components associated with service lines and home plumbing. SCWA Water Association is responsible for providing high quality drinking water, but cannot control the variety of materials used in plumbing components. When your water has been sitting for several hours, you can minimize the potential for lead exposure by flushing your tap for 30 seconds to 2 minutes before using water for drinking or cooking. If you are concerned about lead in your water, you may wish to have your water tested. Information on lead in drinking water, testing methods, and steps you can take to minimize exposure is available from the Safe Drinking Water Hotline or at <http://www.epa.gov/safewater/lead>. The Mississippi State Department of Health Public Health Laboratory offers lead testing for \$10.00 per sample. Please contact 601-576-7582 if you wish to have your water tested.

Some people may be more vulnerable to contaminants in drinking water than the general population. Immuno-compromised persons such as persons with cancer undergoing chemotherapy, persons who have undergone organ transplants, people with HIV/AIDS or other immune system disorders, some elderly, and infants can be particularly at risk from infections. These people should seek advice about drinking water from their health care providers. EPA/CDC guidelines on appropriate means to lessen the risk of infection by Cryptosporidium and other microbiological contaminants are available from the Safe Drinking Water Hotline 800-426-4791.

South Central Water Association, Inc. works around the clock to provide top quality water to every customer. SCWA has received an excellent score with MS State Department of Health for capacity development. We ask that all our customers help us protect our water sources, which are the heart of our community, our way of life and our children's future.

# Annual Water Quality Report 2012 JUN 26 AM 9: 12

## South Central Water Association, Inc.

June 26, 2012  
PWN ID: 0250022

We are pleased to present to you this year's Annual Quality Water Report. This report is designed to inform you about the quality water and services we deliver to you each day. Included are details about where your water comes from, what it contains, and how it compares to Environmental Protection Agency (EPA) and state standards. Our constant goal is to provide you with a safe and dependable supply of drinking water. We want you to understand the efforts we make to continually improve the water treatment process and protect our water resources. We are committed to ensuring the quality of your water.

If you have any questions about this report or concerning your water utility, please contact Louis C. "Buddy" Hand, General Manager, at 601-878-9639 during regular business hours from 8:00 am to 4:30 pm. If you want to learn more about the system, please attend our Annual Meeting on Tuesday, September 25, 2012, at 7:30 pm at the Mississippi Rural Water Association office; 5400 Midway Road at Highway 18.

Our water is drawn from the Forest Hill Sand Aquifer and Sparta Aquifer. SCWA routinely monitors for constituents in your drinking water according to Federal and State laws. As water travels over the land or underground, it may pick up substances or contaminants such as microbes, inorganic or organic chemicals, and radioactive substances. All sources of drinking water are subject to potential contamination by substances that are naturally occurring or man made. Drinking water, including bottled water, may reasonably be expected to contain at least small amounts of some contaminants. It is important to remember that the presence of these constituents does not necessarily indicate that water poses a health risk. Your water is treated with chlorine, a disinfectant to kill dangerous bacteria and microorganisms that may be in the water. More information about contaminants and potential health effects can be obtained by calling the Environmental Protection Agency's Safe Drinking Water Hotline at 1-800-426-4791.

Our source water assessment has been completed and our wells were ranked from Lower to Moderate in terms of susceptibility to contamination. To see a copy of the report please contact our office at 601-878-9639.

In the following table you will find many terms and abbreviations you might not be familiar with. To help you better understand these terms we have provided the following definitions.

### Contaminants that may be present in source water before we treat it include:

- **Microbial contaminants**, such as viruses and bacteria which may come from sewage treatment plants, septic systems, agricultural livestock operations and wildlife.
- **Inorganic contaminants**, such as salts and metals, which can be naturally-occurring or result from urban storm-water runoff, industrial or domestic wastewater discharges, oil and gas production, mining or farming.
- **Pesticides and herbicides**, which may come from a variety of sources such as agriculture, urban storm-water runoff, and residential uses.
- **Radioactive contaminants**, which are naturally occurring or be the result of oil and gas production and mining activities.
- **Organic chemical contaminants**, including synthetic and volatile organic chemicals, which are by-products of industrial processes and petroleum production, and can also come from gas stations, urban storm-water runoff, and septic systems.

### Terms & Abbreviations Used Below:

- **MCLG**-Maximum Contaminant Level Goal: the level of a contaminant in drinking water below which there is no known or expected risk to health. MCLGs allow for a margin of safety.
- **MCL**-Maximum Contaminant Level: the highest level of a contaminant that is allowed in drinking water. MCLs are set as close to the MCLGs as feasible using the best available treatment technology.
- **AL**-Action Level: the concentration of a contaminant which, when exceeded, triggers treatment or other requirements which a water system must follow.
- **MRDLG**-Maximum Residual Disinfection Level Goal: The level of a drinking water disinfectant below which there is no known or expected risk to health. MRDLGs do not reflect the benefits of the use of disinfectants to control microbial contaminants.
- **MRDL**-Maximum Residual Disinfectant Level: The highest level of a disinfectant allowed in drinking water. There is convincing evidence that addition of a disinfectant is necessary for control of microbial contaminants.
- **NA**: not applicable
- **ppb**: parts per billion or micrograms per liter
- **ppm**: parts per million or milligrams per liter
- **pCi/L**: picocuries per liter is a measure of the radioactivity in water
- **ug/L**: Number of micrograms of substance in one liter of water

The following table lists all of the drinking water contaminants that we detected during the calendar year of this report. The presence of contaminants in the water does not necessarily indicate that the water poses a health risk. Unless otherwise noted, the data presented in this table is from testing done in the calendar year of the report. The EPA or the State requires us to monitor for certain contaminants less than once per year because the concentrations of these contaminants do not vary significantly from year to year, or the system is not considered vulnerable to this type of contamination. As such, some of our data, though representative, may be more than one year old.

Contaminants(units)	MCLG or MRDLG	MCL, TT, or MRDL	Your Water	Range Low High	Sample Date	Violation	Typical Source
<b>Disinfection By-Products</b>							
Chlorine (as C12)(ppm)	4	4	1.51	0.95 - 1.91	2011	No	Water additive used to control microbes
TTHMs [Total Trihalomethanes](ppb)	NA	0.060	0.048	NA	Average for year 2011	No	By product of drinking water chlorination
HAA5 [Haloacetic Acids](ppb)	NA	0.080	0.057	NA		No	By product of drinking water disinfection
<b>Inorganic Contaminants</b>							
Barium (ppm)	2	2	0.0026	NA	2011	No	Discharge of drilling wastes, discharge from metal refineries; erosion of natural deposits
Chromium [total] (ppm)	0.1	0.1	.0005	NA	2011	No	Discharge from steel and pulp mills; Erosion of natural deposits
Copper (ppm)	1.3	AL=1.3	0.7 mg/L	NA	2010	No	Corrosion of household plumbing systems; erosion of natural deposits, leaching from wood preservations
Fluoride (ppm)	4	4	0.192	NA	2011	No	Erosion of natural deposits; Water additive which promotes strong teeth; discharge from fertilizer and aluminum factories
Lead(ppb)	0	AL=.015	0.004 mg/L	NA	2010	No	Corrosion of household plumbing systems, erosion of natural deposits
Nitrate(ppm)	10	10	<0.08	N/A	2011	No	Runoff from fertilizer use; Leaching from septic tanks, sewage; Erosion of natural deposits
Nitrite (ppm)	1	1	<0.02	N/A	2011	No	Runoff from fertilizer use; Leaching from septic tanks, sewage; Erosion of natural deposits
Selenium(ppm)	0.05	0.05	0.0025	NA	2011	No	Discharge from petroleum metal refineries; Erosion of natural deposits; Discharge from mines

If present, elevated levels of lead can cause serious health problems, especially for pregnant women and young children. Lead in drinking water is primarily from materials and components associated with service lines and home plumbing. SCWA Water Association is responsible for providing high quality drinking water, but cannot control the variety of materials used in plumbing components. When your water has been sitting for several hours, you can minimize the potential for lead exposure by flushing your tap for 30 seconds to 2 minutes before using water for drinking or cooking. If you are concerned about lead in your water, you may wish to have your water tested. Information on lead in drinking water, testing methods, and steps you can take to minimize exposure is available from the Safe Drinking Water Hotline or at <http://www.epa.gov/safewater/lead>. The Mississippi State Department of Health Public Health Laboratory offers lead testing for \$10.00 per sample. Please contact 601-576-7582 if you wish to have your water tested.

Some people may be more vulnerable to contaminants in drinking water than the general population. Immuno-compromised persons such as persons with cancer undergoing chemotherapy, persons who have undergone organ transplants, people with HIV/AIDS or other immune system disorders, some elderly, and infants can be particularly at risk from infections. These people should seek advice about drinking water from their health care providers. EPA/CDC guidelines on appropriate means to lessen the risk of infection by Cryptosporidium and other microbiological contaminants are available from the Safe Drinking Water Hotline 800-426-4791.

South Central Water Association, Inc. works around the clock to provide top quality water to every customer. SCWA has received an excellent score with MS State Department of Health for capacity development. We ask that all our customers help us protect our water sources, which are the heart of our community, our way of life and our children's future.



# SOUTH CENTRAL WATER ASSOCIATION

14525 MIDWAY ROAD  
(601) 878.9639

OFFICE HOURS:  
8:00 A.M. - 4:30 P.M.  
Monday - Friday

PO BOX 1228  
RAYMOND, MS 39154

2468  
1585

SERVICE PERIOD	ACCOUNT NUMBER	CUSTOMER NAME	SERVICE ADDRESS	
07/09/2012 TO 08/07/2012	077700	L C HAND	6108 PARSONS ROAD	
SERVICE	PREVIOUS READING	PRESENT READING	USAGE	CHARGES
PREVIOUS AMOUNT				18.06
THANK YOU - PAYMENT				-18.06
WATER	96210	99600	3390	17.28

### DELINQUENT CHARGE

- \$30.00 reconnect charge - weekdays from 8:00 am to 4:30 pm
- Reconnection for delinquent accounts will not be performed after hours
- \$50.00 tampering fee

Your Account is Paid Via Automatic Bank Draft:  
This statement is for Informational Purposes Only.  
\*\*\*\*\* Please Do Not Pay \*\*\*\*

### NO OTHER NOTICE WILL BE SENT

- Allow ample time for delivery before the due date when mailing your payment
- Outside depository is available after hours for your convenience
- No adjustment for water leaks or large usage
- Payments must be in the office by 4:30 the 15th to avoid a late fee
- Non-payment of this account may result in interruption of water service after the 19th of the month

### TOTAL AMOUNT DUE

17.28

### DUE DATE

09/10/2012

### AFTER

09/15/2012

### PAY

22.28

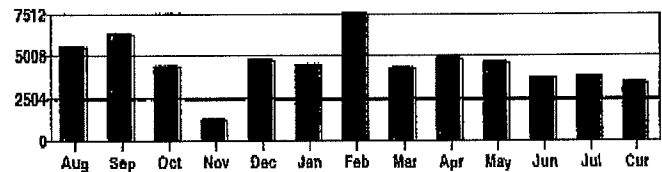
### Account History

Your Water Use this Period: 3390 Gallons  
Water Usage Same Period Last Year: 5470 Gallons  
Average Water Usage: 4740 Gallons

THE 2012 REGULAR ANNUAL MEETING OF THE MEMBERS OF SOUTH CENTRAL WATER WILL BE HELD ON TUESDAY, SEPT. 25, 2012 AT 7:30PM AT MS RURAL WATER, 5400 N MIDWAY ROAD.

CORRECTED CCR AVAILABLE UPON REQUEST

### Your Water Usage During Previous 12 Months



PLEASE BRING ENTIRE BILL IF PAYING IN PERSON. PLEASE DETACH AND RETURN BOTTOM PORTION IF PAYING BY MAIL.



SOUTH CENTRAL WATER ASSOC  
PO BOX 1228  
RAYMOND, MS 39154

Return Service Requested

ACCOUNT #	BILLING DATE	08/26/2012
077700	CURRENT BILL	17.28
DUE DATE	PREV. BALANCE	0.00
09/10/2012	<b>TOTAL DUE</b>	17.28
AFTER	09/15/2012	PAY
		22.28
PLEASE ENTER AMOUNT PAID		\$

\*AUTO \*\*\*AUTO\*\*5-DIGIT 39170



L C HAND  
6185 PARSONS ROAD  
TERRY MS 39170-7154

2468 10

SOUTH CENTRAL WATER ASSOC  
PO BOX 1228  
RAYMOND, MS 39154-1228

