



2011 JUN 27 AM 9:51

45/13

MISSISSIPPI STATE DEPARTMENT OF HEALTH

BUREAU OF PUBLIC WATER SUPPLY
CALENDAR YEAR 2010 CONSUMER CONFIDENCE REPORT
CERTIFICATION FORM

City of Ridgeland
Public Water Supply Name

450013
List PWS ID #s for all Water Systems Covered by this CCR

The Federal Safe Drinking Water Act requires each community public water system to develop and distribute a consumer confidence report (CCR) to its customers each year.

Please Answer the Following Questions Regarding the Consumer Confidence Report

- Customers were informed of availability of CCR by: (Attach copy of publication, water bill or other)
Advertisement in local paper
On water bills
Other

Date customers were informed: / /

- CCR was distributed by mail or other direct delivery. Specify other direct delivery methods:

Date Mailed/Distributed: 6/23/11

- CCR was published in local newspaper. (Attach copy of published CCR or proof of publication)

Name of Newspaper:

Date Published: / /

- CCR was posted in public places. (Attach list of locations) City Hall, Library, Apartment Complexes

Date Posted: 6/20/11

- CCR was posted on a publicly accessible internet site at the address: www.ridgelandms.org

CERTIFICATION

I hereby certify that a consumer confidence report (CCR) has been distributed to the customers of this public water system in the form and manner identified above.

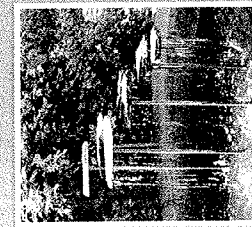
Name/Title (President, Mayor, Owner, etc.)

Date

Mail Completed Form to: Bureau of Public Water Supply/P.O. Box 1700/Jackson, MS 39215
Phone: 601-576-7518

CITY OF RIDGELAND

PWSID 450013 – Date 2010



Ridgeland's Public Works Department is pleased to present to you the 2010 Annual Water Quality Report to inform you about the quality of water and services we deliver to you every day. Our constant goal is to provide a safe and dependable supply of drinking water, and we work consistently to improve the water treatment process and protect our water resources. Ridgeland's water source is two deep-water supply wells in the Cockfield Aquifer and four deep-water supply wells in the Sparta Aquifer.

To comply with the "Regulation Governing Fluoridation of Community Water Supplies," the CITY OF RIDGELAND is required to report certain results pertaining to fluoridation of our water system. The number of months in the previous calendar year that average fluoride sample results were within the optimal range of 0.7-1.3 ppm was 11. The percentage of fluoride samples collected in the previous calendar year that was within the optimal range of 0.7-1.3 ppm was 86%.

The City of Ridgeland routinely tests for contaminants in your drinking water, according to Federal and State laws. The following table shows the results of our monitoring for the period of January 1 to December 31, 2010. As water travels over the land or underground, it can pick up substances or contaminants such as microbes, inorganic and organic chemicals, and radioactive substances. All drinking water, including bottled drinking water, may be reasonably expected to contain at least small amounts of some contaminants. It is important to recognize that the presence of these elements does not necessarily pose a health risk.

If present, elevated levels of lead can cause serious health problems, especially for pregnant women and young children. Lead in drinking water is primarily from materials and components associated with service lines and home plumbing. City of Ridgeland is responsible for providing high quality drinking water, but cannot control the variety of materials used in plumbing components. When your water has been sitting for several hours, you can minimize the potential for lead exposure by flushing your tap for 30 seconds to 2 minutes before using water for drinking or cooking. If you are concerned about lead in your water, you may wish to have your water tested. Information on lead in drinking water, testing methods, and steps you can take to minimize exposure is available from the Safe Drinking Water Hotline or at <http://www.epa.gov/safewater/lead>.

DEFINITIONS:

Unless otherwise noted, the data presented in this table is from testing done in the calendar year of the report. The EPA and the Mississippi State Department of Health requires the City to monitor for certain contaminants less than once per year because the concentrations of these contaminants do not change frequently. Some of the data, though representative of the water quality, may be more than one year old. In the following table you will find several terms and abbreviations with which you may not be familiar. To help you better understand these terms, we've provided the following definitions:

NON-DETECTS (ND) - laboratory analysis indicates that the constituent is not present.
PARTS PER MILLION (ppm) OR MILLIGRAMS PER LITER (mg/l) - one part per million corresponds to one minute in two years or a single penny in \$10,000.
PARTS PER BILLION (ppb) OR MICROGRAMS PER LITER - one part per billion corresponds to one minute in 2,000 years, or a single penny in \$10,000,000.

ACTION LEVEL - the concentration of a contaminant which, if exceeded, triggers treatment or other requirements which a water system must follow.

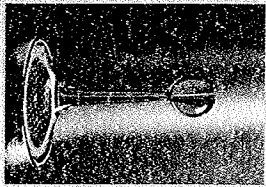
TREATMENT TECHNIQUE (TT) - A treatment technique is a required process intended to reduce the level of a contaminant in drinking water.

MAXIMUM CONTAMINANT LEVEL - The "Maximum Allowed" (MCL) is the highest level of a contaminant that is allowed in drinking water. MCLs are set as close to the MCLGs as feasible using the best available treatment technology.
MAXIMUM CONTAMINANT LEVEL GOAL - The "Goal" (MCLG) is the level of a contaminant in drinking water below which there is no known or expected risk to health. MCLGs allow for a margin of safety.

TEST RESULTS

Contaminant	Violation Y/N	Date Collected	Level Detected	Range of Detects or No. of Samples Exceeding MCL/AL	Unit Measurement	MCLG	MCL	Likely source of contamination:
MICROBIAL CONTAMINANTS:								
Total Coliform	N	2010	0.0	No Range	#	0	>1	Naturally present in the environment
HALOACETIC ACIDS:								
(HAA5)	N	2010	.048	No Range	ppb	NA	60	By-product of drinking water disinfection
INORGANIC CONTAMINANTS:								
Nitrate	N	2010	0.2	No Range	ppm	10	10	Runoff from fertilizer;
Nitrite	N	2010	0.05	No Range	ppm	1	1	leaching from septic tanks;
Nitrate Nitrite	N	2010	0.25	No Range	ppm	10	10	sewage; erosion of natural deposits
VOLATILE ORGANIC CONTAMINANTS:								
THM (total trihalomethanes)	N	2010	57	No Range	ppb	0	80	Chlorine By-Product
RADIOLOGICAL CONTAMINANTS:								
Radium 228	N	2010	1.15	.087-1.15	pCi/L	1.15	80	Naturally present in the environment
DISINFECTANTS & DISINFECTION BY-PRODUCTS:								
Chlorine ppm	N	2010	1.12	.87 - 1.34	ppm	4	4	Water additive to control microbes
INORGANIC CONTAMINANTS								
Lead-action level at consumer taps (ppb)	N	2008	15	No Range	ppb	0	15	Corrosion of household plumbing systems;
Cooper-action level at consumer-taps (ppm)	N	2008	1.3	No Range	ppm	1.3	1.3	erosion of natural deposits

All sources of drinking water are subject to potential contamination by substances that are naturally occurring or man-made. Remember that the presence of contaminants in small amounts does not necessarily indicate a health risk. More information about contaminants and potential health effects can be obtained by calling the Environmental Protection Agency's Safe Drinking Water Hotline at 1-800-426-4791.



Some people may be more vulnerable to contaminants in drinking water than the general population. Immuno-compromised persons such as persons with cancer undergoing chemotherapy, persons who have undergone organ transplants, people with HIV/AIDS or other immune system disorders, some elderly, and infants can be particularly at risk from infections. These people should seek advice about drinking water from their health care providers. EPA/CDC guidelines on appropriate ways to lessen the risk of infection by cryptosporidium and other microbiological contaminants are available from the Safe Drinking Water Hotline (1-800-426-4791).

The City of Ridgeland asks all our customers to help us protect our water sources, which are the heart of our community, our way of life and our children's future. Citizens can report water leaks and contamination of the system by contacting the Public Works Department at 601-853-2627.

If you would like additional information about your drinking water, you may contact our certified waterworks operator or you may prefer to log on to the Internet and obtain specific information about your system and its compliance history at the following address: <http://www.msdh.state.us/watersupply/index.htm>.

Information including current and past boil water notices, compliance and reporting violations, and other information pertaining to your water supply including "Why, When, and How to Boil Your Drinking Water" and "Flooding and Safe Drinking Water" may be obtained.

If you have any questions about this report or concerning your water supply utility, please contact Mark McManus - Water/Sewer System Superintendent at 601-853-2027. We want our customers to be informed about their water supply utility.

Presorted
Standard
U.S. Postage
PAID
Jackson, MS
Permit No. 80



CITY OF RIDGELAND
PUBLIC WORKS DEPARTMENT
P.O. BOX 217
RIDGELAND, MS 39158

PWYSID-450013
DATE 2010

CITY OF RIDGELAND WATER QUALITY REPORT