

RECEIVED-WATER SUPPLY
2009 JUN 30 AM 8:55

APPROVED

BUREAU OF PUBLIC WATER SUPPLY

**CALENDAR YEAR 2008 CONSUMER CONFIDENCE REPORT
CERTIFICATION FORM**

CITY OF NATTIESBURG
Public Water Supply Name

180008

List PWS ID #s for all Water Systems Covered by this CCR

The Federal Safe Drinking Water Act requires each *community* public water system to develop and distribute a consumer confidence report (CCR) to its customers each year. Depending on the population served by the public water system, this CCR must be mailed to the customers, published in a newspaper of local circulation, or provided to the customers upon request.

Please Answer the Following Questions Regarding the Consumer Confidence Report

- Customers were informed of availability of CCR by: *(Attach copy of publication, water bill or other)*
- Advertisement in local paper
 - On water bills
 - Other _____

Date customers were informed: ___ / ___ / ___

- CCR was distributed by mail or other direct delivery. Specify other direct delivery methods:

Date Mailed/Distributed: 6/16/09

- CCR was published in local newspaper. *(Attach copy of published CCR or proof of publication)*

Name of Newspaper: _____

Date Published: ___ / ___ / ___

- CCR was posted in public places. *(Attach list of locations)*

Date Posted: ___ / ___ / ___

- CCR was posted on a publicly accessible internet site at the address: www. _____

CERTIFICATION

I hereby certify that a consumer confidence report (CCR) has been distributed to the customers of this public water system in the form and manner identified above. I further certify that the information included in this CCR is true and correct and is consistent with the water quality monitoring data provided to the public water system officials by the Mississippi State Department of Health, Bureau of Public Water Supply.

John J. Stanford, Gen. Mgr.
Name/Title (President, Mayor, Owner, etc.)

6-26-09
Date

Mail Completed Form to: Bureau of Public Water Supply/P.O. Box 1700/Jackson, MS 39215
Phone: 601-576-7518

PRSRRT STD
U.S. Postage
PAID
Hattiesburg Ms 39402
Permit No. 4

Frequently Called Phone Numbers

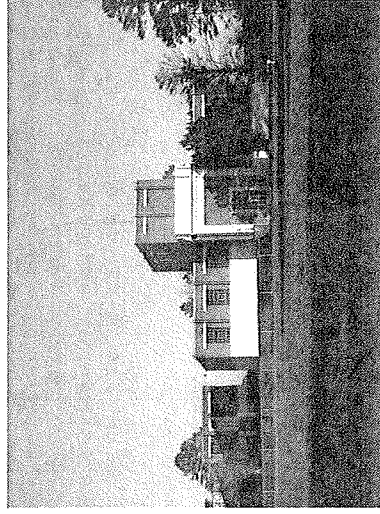
Billing Inquiries, Turn ons, Cut offs:	545-4533
Requests For Service	545-4500
After Hour Problems	545-4635
Water Plant #1	545-4636
Water Plant #2	545-4635
General Managers Office	545-4530

RECEIVED - WATER SUPPLY
2009 JUN 30 AM 10:55
HATTIESBURG

PWS ID# 180008

2008 Annual Drinking Water Quality Report

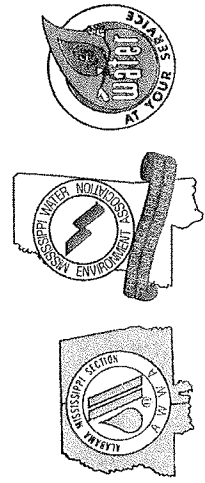
Report prepared May 31, 2009



Hattiesburg Water & Sewer Dept. Phone: (601) 545-4530
Water Plant #2 Fax: (601) 545-4689
900 James Street www.hattiesburgms.com
Hattiesburg, Mississippi 39401

Office hours: 7:00 a.m. to 3:30 p.m. Monday thru Friday

Hattiesburg Water & Sewer Dept.
900 James Street
Hattiesburg, MS 39401



We're very pleased to provide you with this year's Annual Water Quality Report. We want to keep you informed about the excellent water and services we have delivered to you over the past year. Our goal is and always has been, to provide to you a safe and dependable supply of drinking water. Our water source is groundwater from fourteen (14) wells using water from the Middle Catahoula Formation and the Upper Catahoula Formation aquifers.

We are pleased to report that our drinking water meets all federal and state requirements. If you have any questions about this report or concerning your water utility, please contact Teresa Williams at Water Plant #2 - 900 James Street, Hattiesburg, Mississippi 39401. Her phone number is 545-4530. We want our valued customers to be informed about their water utility. If you want to learn more, please attend any of our regularly scheduled city council meetings. They are held on the first and third Tuesday of each month at 4:00 pm in the council room at City Hall. City Hall is located at 200 Forrest St., downtown Hattiesburg.

The City of Hattiesburg routinely monitors for up to 154 constituents in your drinking water according to Federal and State laws. This table shows the results of our monitoring for the period of January 1st to December 31st, 2008. As water travels over the land or underground, it can pick up substances or contaminants such as microbes, inorganic and organic chemicals, and radioactive substances. All drinking water, including bottled drinking water, may be reasonably expected to contain at least small amounts of some constituents. It's important to remember that the presence of these constituents does not necessarily pose a health risk.

In this table you will find many terms and abbreviations you might not be familiar with. To help you better understand these terms we've provided the following definitions:

Action Level (AL) - The concentration of a contaminant which, if exceeded, triggers treatment or other requirements which a water system must follow.

Treatment Technique (TT) - A treatment technique is a required process intended to reduce the level of a contaminant in drinking water.

Maximum Contaminant Level - The "Maximum Allowed" (MCL) is the highest level of a contaminant that is allowed in drinking water. MCLs are set as close to the MCLGs as feasible using the best available treatment technology.

Maximum Contaminant Level Goal - The "Goal" (MCLG) is the level of a contaminant in drinking water below which there is no known or expected risk to health. MCLGs allow for a margin of safety.

WATER QUALITY TEST RESULTS

Contaminant	Violation Y/N	Date Collected	Level Detected	Range of Detects or # of Samples Exceeding MCL/AL	Unit of Measurement	MCLG	MCL	Likely Source of Contamination
Radioactive Contaminants								
4. Beta/photon emitters	N	2002	3.60	No Range	PC/l	0	50	Decay of natural and man-made deposits
Inorganic Contaminants								
10. Barium	N	2008	.041	No Range	ppm	2	2	Discharge of drilling wastes; discharge from metal refineries; erosion of natural deposits
12. Cadmium	N	2008	.0001	No Range	ppb	5	5	Corrosion of galvanized pipes; erosion of natural deposits; discharge from metal refineries; runoff from waste batteries and paints
14. Copper	N	2008	.0182	0	ppm	1.3	AL=1.3	Corrosion of household plumbing systems; erosion of natural deposits; leaching from wood preservatives
16. Fluoride	N	2008	.157	*	ppm	4	4	Erosion of natural deposits; water additive which promotes strong teeth; discharge from fertilizer and aluminum factories
17. Lead	N	2008	.0006	0	ppb	0	AL=15	Corrosion of household plumbing systems; erosion of natural deposits
73. TTHM [Total trihalomethanes]	N	2008	10.46	1.5 - 7.1	ppb	0	100	By-product of drinking water chlorination

* The City of Hattiesburg routinely adjusts the fluoride level in the finished water to 0.8 - 1.2 mg/l.

All sources of drinking water are subject to potential contamination by substances that are naturally occurring or man made. These substances can be microbes, inorganic or organic chemicals and radioactive substances. All drinking water, including bottled water, may reasonably be expected to contain at least small amounts of some contaminants. The presence of contaminants does not necessarily indicate that the water poses a health risk. More information about contaminants and potential health effects can be obtained by calling the Environmental Protection Agency's Safe Drinking Water Hotline at 1-800-426-4791.

Some people may be more vulnerable to contaminants in drinking water than the general population. Immuno-compromised persons such as persons with cancer undergoing chemotherapy, persons who have undergone organ transplants, people with HIV/AIDS or other immune system disorders, some elderly, and infants can be particularly at risk from infections. These people should seek advice about drinking water from their health care providers. EPA/CDC guidelines on appropriate means to lessen the risk of infection by cryptosporidium and other microbiological contaminants are available from the Safe Drinking Water Hotline (800-426-4791). Please call our office if you have questions.

Please be assured that those of us, who work with the City of Hattiesburg Water System, work hard every day to provide quality drinking water to every customer. We ask that all our customers help us protect our water sources, which are the heart of our community, our way of life and our children's future.

Monitoring and reporting of compliance data violations: We are required to monitor your drinking water for specific constituents on a monthly basis. Results of regular monitoring are an indicator of whether or not our drinking water meets health standards. Beginning Jan. 1, 2004, the Mississippi State Department of Health required public water systems that use chlorine as a primary disinfectant to monitor test for chlorine residuals as required by the Stage 1 Disinfection By-Products Rule. Our water system failed to complete these monitoring requirements; therefore, we cannot be sure of your water quality during this particular time. The samples were cleared by the health dept. We failed to log the chlorine residual on the form. This occurred Feb. 2006.

Frequently Called Phone Numbers

- Billing Inquiries, Turn ons, Out offs: 545-4533
- Requests For Service 545-4500
- After Hour Problems 545-4635
- Water Plant #1 545-4636
- Water Plant #2 545-4635
- Genera: Managers Office 545-4530

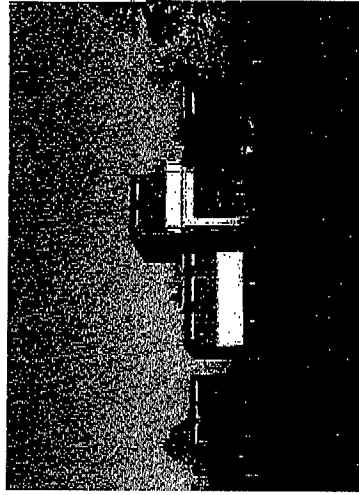
PRSAT STD
U.S. Postage
PAID
Hattiesburg, MS 39401
Permit No. 1

CITY OF HATTIESBURG

PWS ID# 180008

2008 Annual Drinking Water Quality Report

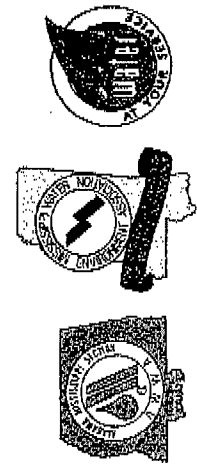
Report prepared May 31, 2009



Hattiesburg Water & Sewer Dept. Phone: (601) 545-4530
 Water Plant #2 Fax: (601) 545-4689
 900 James Street www.hattiesburgms.com
 Hattiesburg, Mississippi 39401

Office hours: 7:00 a.m. to 3:30 p.m. Monday thru Friday

Hattiesburg Water & Sewer Dept.
 900 James Street
 Hattiesburg, MS 39401



We're very pleased to provide you with this year's Annual Water Quality Report. We want to keep you informed about the excellent water and services we have delivered to you over the past year. Our goal is and always has been, to provide to you a safe and dependable supply of drinking water. Our water source is groundwater from fourteen (14) wells using water from the Middle Catahoula Formation and the Upper Catahoula Formation aquifers.

We are pleased to report that our drinking water meets all federal and state requirements. If you have any questions about this report or concerning your water utility, please contact Teresa Williams at Water Plant #2 - 900 James Street, Hattiesburg, Mississippi 39401. Her phone number is 545-4530. We want our valued customers to be informed about their water utility. If you want to learn more, please attend any of our regularly scheduled city council meetings. They are held on the first and third Tuesday of each month at 4:00 pm in the council room at City Hall. City Hall is located at 200 Forrest St., downtown Hattiesburg.

The City of Hattiesburg routinely monitors for up to 154 constituents in your drinking water according to Federal and State laws. This table shows the results of our monitoring for the period of January 1st to December 31st, 2008. As water travels over the land or underground, it can pick up substances or contaminants such as microbes, inorganic and organic chemicals, and radioactive substances. All drinking water, including bottled drinking water, may be reasonably expected to contain at least small amounts of some constituents. It's important to remember that the presence of these constituents does not necessarily pose a health risk.

In this table you will find many terms and abbreviations you might not be familiar with. To help you better understand these terms we've provided the following definitions:

Action Level (AL) - The concentration of a contaminant which, if exceeded, triggers treatment or other requirements which a water system must follow.

Treatment Technique (TT) - A treatment technique is a required process intended to reduce the level of a contaminant in drinking water.

Maximum Contaminant Level - The "Maximum Allowed" (MCL) is the highest level of a contaminant that is allowed in drinking water. MCLs are set as close to the MCLGs as feasible using the best available treatment technology.

Maximum Contaminant Level Goal - The "Goal" (MCLG) is the level of a contaminant in drinking water below which there is no known or expected risk to health. MCLGs allow for a margin of safety.

WATER QUALITY TEST RESULTS

Contaminant	Violation Y/N	Date Collected	Level Detected	Range of Detects or # of Samples Exceeding MCL/AL	Unit of Measurement	MCLG	MCL	Likely Source of Contamination
Radioactive Contaminants								
4. Beta/Photon emitters	N	2002	3.60	No Range	PCII	0	50	Decay of natural and man-made deposits
Inorganic Contaminants								
10. Barium	N	2008	.041	No Range	ppm	2	2	Discharge of drilling wastes; discharge from metal refineries; erosion of natural deposits
12. Cadmium	N	2008	.0001	No Range	ppb	5	5	Corrosion of galvanized pipes; erosion of natural deposits; discharge from metal refineries; runoff from waste batteries and paints
14. Copper	N	2008	.0182	0	ppm	1.3	AL=1.3	Corrosion of household plumbing systems; erosion of natural deposits; leaching from wood preservatives
16. Fluoride	N	2008	.157	*	ppm	4	4	Erosion of natural deposits; water additive which promotes strong teeth; discharge from fertilizer and aluminum factories
17. Lead	N	2008	.0006	0	ppb	0	AL=15	Corrosion of household plumbing systems; erosion of natural deposits
73. THM (Total Trihalomethanes)	N	2008	10.46	1.5 - 7.1	ppb	0	400	By-product of drinking water disinfection

* The City of Hattiesburg routinely adjusts the fluoride level in the finished water to 0.8 - 1.2 mg/L.

All sources of drinking water are subject to potential contamination by substances that are naturally occurring or man made. These substances can be microbes, inorganic or organic chemicals and radioactive substances. All drinking water, including bottled water, may reasonably be expected to contain at least small amounts of some contaminants. The presence of contaminants does not necessarily indicate that the water poses a health risk. More information about contaminants and potential health effects can be obtained by calling the Environmental Protection Agency's Safe Drinking Water Hotline at 1-800-426-4791.

Some people may be more vulnerable to contaminants in drinking water than the general population. Immuno-compromised persons such as persons with cancer undergoing chemotherapy, persons who have undergone organ transplants, people with HIV/AIDS or other immune system disorders, some elderly, and infants can be particularly at risk from infections. These people should seek advice about drinking water from their health care providers. EPA/CDC guidelines on appropriate means to lessen the risk of infection by cryptosporidium and other microbiological contaminants are available from the Safe Drinking Water Hotline (800-426-4791).

Please call our office if you have questions. Please be assured that those of us, who work with the City of Hattiesburg Water System, work hard every day to provide quality drinking water to every customer. We ask that all our customers help us protect our water sources, which are the heart of our community, our way of life and our children's future.

Monitoring and reporting of compliance data violations: We are required to monitor your drinking water for specific constituents on a monthly basis. Results of regular monitoring are an indicator of whether or not our drinking water meets health standards. Beginning Jan. 1, 2004, the Mississippi State Department of Health required public water systems that use chlorine as a primary disinfectant to monitor test for chlorine residuals as required by the Stage 1 Disinfection By-Products Rule. Our water system failed to complete these monitoring requirements; therefore, we cannot be sure of your water quality during this particular time. The samples were cleared by the health dept. We failed to log the chlorine residual on the form. This occurred Feb. 2006.

RECEIVED - WATER SUPPLY

2009 SEP -9 PM 12: 54

Frequently Called Phone Numbers

Billing Inquiries, Turn ons, Cut offs:	545-4533
Requests For Service	545-4500
After Hour Problems	545-4635
Water Plant #1	545-4636
Water Plant #2	545-4635
General Managers Office	545-4530

Hattiesburg Water & Sewer Dept.
900 James Street
Hattiesburg, MS 39401

CITY OF HATTIESBURG

PWS ID# 180008

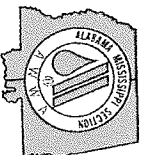
2008 Annual Drinking Water Quality Report

Report prepared May 31, 2009



Hattiesburg Water & Sewer Dept. Phone: (601) 545-4530
Water Plant #2 Fax: (601) 545-4689
900 James Street www.hattiesburgms.com
Hattiesburg, Mississippi 39401

Office hours: 7:00 a.m. to 3:30 p.m. Monday thru Friday



We're very pleased to provide you with this year's Annual Water Quality Report. We want to keep you informed about the excellent water and services we have delivered to you over the past year. Our goal is and always has been, to provide to you a safe and dependable supply of drinking water. Our water source is groundwater from fourteen (14) wells using water from the Middle Catahoula Formation and the Upper Catahoula Formation aquifers.

We are pleased to report that our drinking water meets all federal and state requirements. If you have any questions about this report or concerning your water utility, please contact Teresa Williams at Water Plant #2 - 900 James Street, Hattiesburg, Mississippi 39401. Her phone number is 545-4530. We want our valued customers to be informed about their water utility. If you want to learn more, please attend any of our regularly scheduled city council meetings. They are held on the first and third Tuesday of each month at 4:00 pm in the council room at City Hall. City Hall is located at 200 Forrest St., downtown Hattiesburg.

The City of Hattiesburg routinely monitors for up to 154 constituents in your drinking water according to Federal and State laws. This table shows the results of our monitoring for the period of January 1st to December 31st, 2008. As water travels over the land or underground, it can pick up substances or contaminants such as microbes, inorganic and organic chemicals, and radioactive substances. All drinking water, including bottled drinking water, may be reasonably expected to contain at least small amounts of some constituents. It's important to remember that the presence of these constituents does not necessarily pose a health risk.

In this table you will find many terms and abbreviations you might not be familiar with. To help you better understand these terms we've provided the following definitions:

Action Level (AL) - The concentration of a contaminant which, if exceeded, triggers treatment or other requirements which a water system must follow.

Treatment Technique (TT) - A treatment technique is a required process intended to reduce the level of a contaminant in drinking water.

Maximum Contaminant Level - The "Maximum Allowed" (MCL) is the highest level of a contaminant that is allowed in drinking water. MCLs are set as close to the MCLGs as feasible using the best available treatment technology.

Maximum Contaminant Level Goal - The "Goal"(MCLG) is the level of a contaminant in drinking water below which there is no known or expected risk to health. MCLGs allow for a margin of safety.

Contaminant	Violation Y/N	Date Collected	Level Detected	Range of Detects or # of Samples Exceeding MCL/AL	Unit of Measurement	MCLG	MCL	Likely Source of Contamination
Radioactive Contaminants								
4. Beta/photon emitters	N	2002	3.60	No Range	PC/II	0	50	Decay of natural and man-made deposits
Inorganic Contaminants								
10. Barium	N	2008	.041	No Range	ppm	2	2	Discharge of drilling wastes; discharge from metal refineries; erosion of natural deposits
12. Cadmium	N	2008	.0001	No Range	ppb	5	5	Corrosion of galvanized pipes; erosion of natural deposits; discharge from metal refineries; runoff from waste batteries and paints
14. Copper	N	2008	.0182	0	ppm	1.3	AL=1.3	Corrosion of household plumbing systems; erosion of natural deposits; leaching from wood preservatives
16. Fluoride	N	2008	.157	*	ppm	4	4	Erosion of natural deposits; water additive which promotes strong teeth; discharge from fertilizer and aluminum factories
17. Lead	N	2008	.0006	0	ppb	0	AL=15	Corrosion of household plumbing systems; erosion of natural deposits
73. TTHM (Total trihalomethanes)	N	2008	10.46	1.5 - 7.1	ppb	0	100	By-product of drinking water chlorination
Disinfection & Disinfection By-Products	Violation	Date Sampled	Average Residual	Low Residual	High Residual	MCLG	MCL	
Chlorine (as CL2)	N	2008	1.28	1.00	1.28	4	4	Water additive used to control microbes

* The City of Hattiesburg routinely adjusts the fluoride level in the finished water to 0.8 - 1.2 mg/l.

Additional information for lead

If present, elevated levels of lead can cause serious health problems, especially for pregnant women and young children. Lead in drinking water is primarily from materials and components associated with service lines and home plumbing. The City of Hattiesburg Water Dept. is responsible for providing high quality drinking water, but cannot control the variety of materials used in plumbing components. When your water has been sitting for several hours, you can minimize the potential for lead exposure by flushing your tap for 30 seconds to 2 minutes before using water for drinking or cooking. If you are concerned about lead in your water, you may wish to have your water tested. Information on lead in drinking water, testing methods, and steps you can take to minimize exposure is available from the Safe Drinking Water Hotline or at <http://www.epa.gov/safewater/lead>. The Mississippi State Department of Health Public Health Laboratory offers lead testing for \$10 per sample. Please contact 601-576-7582 if you wish to have your water tested.

****** A Message from MSDH**

Concerning Radiology Sampling**** In accordance with the Radionuclides Rule, all community public water supplies were required to sample quarterly for radionuclides beginning January 2007-December 2007. Your public water supply completed sampling by the scheduled deadline; however, during an audit of the Mississippi State Department of Health Radiological Health Laboratory, the Environmental Protection Agency (EPA) suspended analyses and reporting of radiological compliance samples and results until further notice. Although this was not the result of inaction by the public water supply, MSDH was required to issue a violation. The Bureau of Public Water Supply is taking action to resolve this issue as quickly as possible. If you have any questions, please contact Melissa Parker, Deputy Director, Bureau of Public Water Supply, at 601-576-7518. All sources of drinking water are subject to potential contamination by substances that are naturally occurring or man made. These substances can be microbes, inorganic or organic chemicals and radioactive substances. All drinking water, including bottled water, may reasonably be expected to contain at least small amounts of some contaminants. The presence of contaminants does not necessarily indicate that the water is unsafe to drink.

not necessarily indicate that the water poses a health risk. More information about contaminants and potential health effects can be obtained by calling the Environmental Protection Agency's Safe Drinking Water Hotline at 1-800-426-4791.

Some people may be more vulnerable to contaminants in drinking water than the general population. Immuno-compromised persons such as persons with cancer undergoing chemotherapy, persons who have undergone organ transplants, people with HIV/AIDS or other immune system disorders, some elderly, and infants can be particularly at risk from infections. These people should seek advice about drinking water from their health care providers. EPA/CDC guidelines on appropriate means to lessen the risk of infection by cryptosporidium and other microbiological contaminants are available from the Safe Drinking Water Hotline (800-426-4791).

Please call our office if you have questions.

Please be assured that those of us, who work with the City of Hattiesburg Water System, work hard every day to provide quality drinking water to every customer. We ask that all our customers help us protect our water sources, which are the heart of our community, our way of life and our children's future.

Monitoring and reporting of compliance data violations: We are required to monitor your drinking water for specific constituents on a monthly basis. Results of regular monitoring are an indicator of whether or not our drinking water meets health standards. Beginning Jan. 1, 2004, the Mississippi State Department of Health required public water systems that use chlorine as a primary disinfectant to monitor/ test for chlorine residuals as required by the Stage 1 Disinfection By-Products Rule. Our water system failed to complete these monitoring requirements; therefore, we cannot be sure of your water quality during this particular time. The samples were cleared by the health dept. We failed to log the chlorine residual on the form. This occurred Feb. 2006.

411-1-04-10000
 HATTIESBURG, MS
 HATTIESBURG, MS 39402

CITY OF HATTIESBURG
 WATER BILLING OFFICE
 PO BOX 1897
 HATTIESBURG, MS 39408-1897
 (601) 342-4034

FIRST-CLASS MAIL
 US POSTAGE PAID
 PRE-SORTED RATE
 PERMIT NO. 213
 HATTIESBURG, MS

NO. 003
BENNIE J SELLERS

NOTE:
 ALL LAST DUE ACCOUNTS
 MUST BE PAID BY
 DELINQUENT SERVICE TO
 AVOID CURFEW / NO SHOW
 FEE FROM C. TEL

ACCOUNT # 00039236
 PREVIOUS 142.92
 LAST DUE 08/06/09
 DELINQUENT 08/21/09
 CURRENT 81942425
 TOTAL 199

SEE REVERSE FOR
 DISPUTE PROCEDURES

DESCRIPTION AMOUNT

WTR	60.48
SEM	48.44
GAR	34.00
Current Bill	142.92
Past Due	142.92
Total	285.84
/Account #	00039236
Previous	Present
Delinquent Date	08/21/09
Services Address	125 40TH PL
Services DTD	07/13/09
Return Service Requested	

BENNIE J SELLERS
 125 40TH PL
 HATTIESBURG MS 39402

2008 CCR Contact Information

Date: 7/21/09 Time: 1:42

PWSID: 180008

System Name: Hattiesburg

Lead/Copper Language

MRDL Violation

MSDH Message re: Radiological Lab

Chlorine Residual (MRDL) RAA

Other Violation(s) _____

Will correct report & mail copy marked "**corrected copy**" to MSDH.

Will notify customers of availability of corrected report on next monthly bill.

WILL DO CORRECTED COPY AND NOTIFY CUSTOMERS OF AVAILABLE CORRECTED REPORT ON WATER BILL OR LETTER AND SEND US A COPY.

Spoke with John Stanford 601 549-7411 call
(Operator, Owner, Secretary)

9/3/09 1:55pm
Mr Stanford will bring correct copy
in the office 9/4/09

9/3/09
SECOND ATTEMPT