

**Mississippi State Penitentiary
Parchman, Mississippi**

**2022 Sanitation Inspection Report
September 26-29, 2022**

Conducted by



**MISSISSIPPI STATE DEPARTMENT OF HEALTH
Institutional Services**



MISSISSIPPI STATE DEPARTMENT OF HEALTH

January 10, 2023

The Honorable Tate Reeves
Governor of the State of Mississippi
Walter Sillers State Office Building
550 High Street – 19th Floor
Jackson, Mississippi 39201

RE: The 2022 Mississippi State Penitentiary at Parchman Annual Sanitation Report
September 26 – 29, 2022

Governor Reeves:

In compliance with Section 47-5-94, of the Mississippi Code of 1972, we are submitting the attached report regarding the inspection of the Mississippi State Penitentiary at Parchman, Mississippi.

The 2022 Sanitation Inspection was conducted by Rayford E. Horton, Environmental Administrator I, of the Mississippi State Department of Health (MSDH), Division of Institutional Services.

The Mississippi State Department of Health is thankful for the opportunity to promote and protect the health of Mississippians. Please contact our Office of Environmental Health at (601) 576-7690 with any comments or concerns.

Sincerely,

A handwritten signature in blue ink, appearing to read 'Daniel Edney', with a long horizontal flourish extending to the right.

Daniel Edney, MD, FACP, FASAM
State Health Officer

Attachment

pc: The Honorable Lynn Fitch, State Attorney General
Bureau of Buildings, Grounds and Real Property Management
State of Mississippi Fire Marshal
Burl Cain, Commissioner, MS Department of Corrections
Jeworski Mallett, Deputy Commissioner of Institutions
Mark McClure, Superintendent, Mississippi State Penitentiary

570 East Woodrow Wilson • Post Office Box 1700 • Jackson, MS 39215-1700
601-576-8090 • 1-866-HLTHY4U • www.HealthyMS.com

Equal Opportunity in Employment/Services

**Mississippi State Penitentiary
Parchman, Mississippi
2022 Sanitation Inspection Report
(September 26-29, 2022)**

Facility Name & Address: Mississippi State Penitentiary Hwy. 49 West Parchman, Mississippi 38768	Inspected By: Rayford Horton, Public Health Officer <hr/> INSTITUTIONAL SERVICES P.O. BOX 1700 JACKSON, MISSISSIPPI 39215-1700 PHONE 601/576-7693
Environmental Sanitation	Inspection Date: September 29-29, 2022
Area II (Units 25, 26A-B & Kitchen, 28, 30A-D, 30 Gym, Education, 31, 42)	
Deficiency	Response
Unit 28 (Zone A)	
Shower drain is backed up and holding water	
Vent missing in ceiling	
One () light out above bed #2	
Light out at entry to zone	
Exit light out at back door	
One (1) light out in cell #18-22	
One (1) light out in cell #29-34	
Toilet runs water continuously in cell #35-40	
Unit 28 (Zone B)	
Toilet will not flush in room #80-84	
When toilet is flushed in Cell #51-56, it backs up into Cell #57-62	
Cell #57-62 cinder blocks removed above sink	
Pipe chase between Room 57-62 and 51-56 needs to be re-anchored	
Exit light out at entry to zone	
Unit 28 (Zone C)	
Knob missing on showers 2 and 3 on the left	
Cell #114-118 light inoperable above sink	
Cell #125-130 one (1) light is out	
Unit 28 (Zone D)	
Shower floor holding water	
1 st shower on the right hot water runs continuously	
Cell #153-156 one (1) light is out	

Deficiency	
Unit 28 Kitchen (Food Service/Sanitation)	
No critical food violations were found	
Shattered glass in window behind serving line	
Hot water handle missing on three (3) compartment sink	
Sink runs water continuously	
Boiler in mechanical room has a break in the exhaust line possibly exposing carbon monoxide	
Unit 28 Barbershop	
No deficiencies noted this inspection	
Unit 31 Zone A	
Bed #2 sink is stopped up	
Bed #1 toilet button leaking	
1 st urinal water runs continuously	
Shower drain is backed up and holding water	
Handicapped railing loose on the bathtub	
Bed #2 lavatory sink is stopped up	
Bed #1 toilet button leaking	
Unit 31 Zone B	
No discrepancies noted this inspection	
Unit 31 Zone C	
Exit light out at back door	
1 st urinal not draining	
Paint peeling in all bathtubs	
Unit 31 Zone D	
Observed a gray cat sitting in the window of Room #7-10	
1 st urinal stopped up-pressure low	
Bed #1 lavatory sink is stopped up	
Unit 31 Food Service/Sanitation	
Rainwater drains under wall beside ice machine	
No critical food violations were found	
UNIT 42 (Hospital/infirmary) Kitchen	
Observed a pan of gravy on counter no date/label	
Observed Mosquitos in the food pantry	
Observed dirty gloves, scrub brush and garbage bags in kitchen sink	
No temperature log on cooler	
Cooler has a leak with standing water inside	
Observed a bag of opened chips and a honey bun in kitchen cooler	
Observed bars of bath soap being used to wash dishes	

Unit 42 (Laundry Room)	
Observed dryer Lint Filter needed cleaning	

Laundry ceiling need replacing	
Observed an abundance of paper towels stored behind dryer and gloves on top of the dryer while in use (Flammable)	
Unit 42 West Hall	
Toilet Seat missing in Inmate bathroom	
Bathtub runs water continuously	
Room #216 light out above toilet	
Room #217 light switch broken and not mounted on the wall	
Room #218 A & B has no lights	
Isolation Room #2 light hanging	
Room #219 lavatory sink water pressure low	
Unit 42 Offender Holding Area	
Lavatory sink cold water does not work	
Observed exposed wires hanging from ceiling	
Unit 42 South Hall	
Room #202 – no running water and no bed	
Low water pressure on bathtub	
Observed two (2) offenders sleeping on the floor (No Bed)	
Observed a bed mat in the shower	
No lights in the shower	
Drain cover missing in shower	
Toilet seat missing from toilet	
Shower missing the shower head	
FOOD SERVICE/SANITATION-Unit 30 Kitchen	
No critical food violations were found	
Kitchen floor need resurfacing	
Freezer out of order with no work order	
Dish room has five (5) lights out	
Panel on wall loose in dish room	
Sanitizer line on three (3) compartment sink not long enough to reach	
Tilt skillet is out of order	
Unit 30-A Bldg. A- Zone	
1 st and 3 rd lavatory sink hot water does not work	
5 th lavatory sink cold water does not work	
Exhaust fan above toilets do not work	
Unit 30-A Bldg. B Zone	
3 rd shower water runs continuously	
4 th shower does not work	
2 nd shower water runs continuously	
Unit 30-B Bldg. A Zone	
2 nd and 5 th lavatory sinks are stopped up	
3 rd , 4 th and 5 th lavatory sink hot water does not work	
2 nd and 6 th lavatory sink cold water does not work	
Mop sink at the shower is stopped up	
Unit 30-B Bldg. B Zone	

5 th lavatory sink does not work	
Zone Exit lights do not work	
Unit 30-C Bldg. A Zone	
2 nd and 4 th lavatory sink water pressure is low	
1 st urinal does not work	
5 th toilet does not work	
2 nd lavatory sink water pressure is low	
Water fountain stopped up	
Shower knob is pushed in	
Unit 30-C Bldg. B Zone	
3 rd and 4 th lavatory sinks are stopped up	
1 st , 2 nd , 3 rd , 4 th and 6 th lavatory sink hot water does not work	
1 st and 3 rd toilets do not work	
5 th urinal does not work	
Exit light at the back door does not work	
Unit 30-D Bldg. A Zone	
2 nd lavatory sink water runs continuously	
5 th and 6 th lavatory sink hot water does not work	
Unit 30-D Bldg. B Zone	
1 st lavatory sink hot water does not work	
2 nd lavatory sink does not work	
6 th lavatory sink cold water does not work	
6 th commode does not work	
1 st shower on right water runs continuously	
Exit lights at entrance and back door do not work	
Unit 30 Hallway	
Observed light cover hanging	
Unit 30 Concession Trailer	
Observed rat droppings on top of freezer	
Trailer has no running water for sanitizing	
Unit 30 Library/ABE School	
No discrepancies noted during this inspection	
Unit 30 Alcohol and Drug School	
1 st and 5 th urinals do not work	
6 th urinal is missing from the wall	
2 nd lavatory sink does not work	
Room #45-46 lavatory sink hot water knob is broken	
Unit 30 GYM	
Five (5) lights are out in the restroom	
4 th toilet does not work	
1 st lavatory sink cold water does not work	
4 th and 5 th lavatory sink handles are missing	

Exit lights in GYM are out	
Lavatory sink in visitation restroom is leaking	
Unit 29	
Unit 29 Bldg. A	
Observed Food tray on bench in front of building	
Unit 29 Bldg. A	
Zone Closed	
Unit 29 Bldg. A / Zone B	
2 nd shower has no showerhead, no knobs, and has mold	
Cell # 57 light fixture missing	
Cell # 60 light fixture missing and toilet leaking	
Cell #62 lavatory sink hot water does not work, window broken and light fixture is missing	
Cell #64 lights out	
Cell #88 electrical outlet not working	
Cell #81 toilet does not work	
Cell #80 light out	
Cell #79 has no electrical power	
Cell #78 has no window	
Cell #76 has no electrical power	
Cell #75 has no electrical power	
Unit 29 Bldg. A Zone B Top Tier	
2 nd shower has no showerhead	
Observed Mold on the shower floor	
1 st and 2 nd shower runs water continuously and light does not work	
Cell #68 has no window and lavatory sink runs water continuously	
Cell #66 has no electrical power, lights out and lavatory sink runs water continuously	
Unit 29 Bldg. C	
Hall Area	
Ceiling tile needs to be replaced	
Observed a ceiling leak in tele-health room	
Unit 29 Bldg. C / A Zone	
Cell #19 toilet button leaking; water pressure high on sink	
Cell #20 lavatory sink hot water does not work and toilet button leaks	
Window will not close above bed #22	
Leaking in corner behind bed #24	
1 st and 2 nd lavatory sink do not work and the shower has mold in ceiling	
1 st urinal stopped up	
Unit 29 Bldg. C / Zone A Upstairs	
Access panels hanging in front of cell #70	

2 nd lavatory sink pipes are missing	
Observed Paint peeling off the walls in shower	
Sink #2 stopped up in restroom	
1 st and 2 nd urinals stopped up	
Four (4) lights out in the dayroom	
Observed a hole in the wall above beds 40;42; and 48	
Observed exposed electrical wires from socket beside bed #39	
Unit 29 Bldg. C / Zone B	
Access panel hanging at entry to zone	
1 st urinal stopped up	
Mold on ceiling in shower	
Shower floor has a hole in concrete	
Ceiling leaking above Bed #82	
Cell #85 lavatory sink hot water button stuck and cold water does not work	
Cell #86 lavatory sink cold water does not work and hot water pressure low	
Observed Bird nest /bird in window above bed #90	
Observed Bird nest in window above bed #94	
Cell #95 lavatory sink water pressure low (hot and cold)	
Cell #96 lavatory sink does not work	
Hole in wall above bed #100	
Hanging socket above bed #99	
Hole in wall above bed #98; window is out and stored on the floor	
Top Tier	
Cell #95 lavatory sink does not work	
Observed Bird nest in window behind bed #138,134 and 128	
Observed exposed electrical wires in ceiling in front of cell #120	
Window screen has holes behind bed #116	
Lights out above bed #114	
2 nd sink in bathroom has no knobs	
Shower has mold	
Observed Bird nest in window over bed #108 and 106	
Unit 29 Bldg. G / Zone A	
Food trays sitting at gate on entry to G/H section	
Hole in ceiling in the hall	
Food tray sitting on garbage can in hall	
Cell #2 lavatory sink has low hot water pressure	
Cell #4 lavatory sink missing the knobs	
Top Tier	
Cell #37 toilet will not flush	
Shower #1 runs water continuously	
Cell #25 lavatory sink water runs continuously	
Unit 29 Bldg. G / Zone B	
Exit light in front of exit door	

Cell #1 leak in cell, window will not close	
Cell #6 bed #91 has no mattress	
Cell #4 window screen is missing	
Cell #5 window will not close	
Top Tier	
Cell #36 and #35 windows are broken	
Cell #27 window broken and lavatory sink stopped up	
Cell #26 lights out	
Cell #25 toilet leaks and lavatory sink is clogged up	
Cell #23 window will not close	
Cell #40 window will not close	
Unit 29 Bldg. H / Zone A	
Food trays sitting on bench at front door	
Observed Rug at front door full of bird feces (corrected on site)	
Showers hot water does not work	
Cell #2 ceiling has a leak	
Cell #3 lavatory sink hot water does not work	
Cell #4 lavatory sink cold water does not work	
Cell #5 lavatory sink cold water does not work	
Cell #20 lavatory sink knobs are missing	
Top Tier	
Seven (7) Lights out throughout zone	
Cell #34 lavatory sink hot water does not work	
Cell #32 lavatory sink hot water runs continuously	
Cell #40 lavatory sink does not work	
Cell #30 window will not close	
Cell #31 lavatory sink cold water does not work	
Cell #26 lavatory sink has a leak and knobs are missing/Window will not close	
Cell #24 light switch is broken	
Cell #20 lavatory sink hot water does not work	
Unit 29 Bldg. H / Zone B	
Zone has no hot water and 1st, 2nd, 3rd showers water pressure is low	
Cell #19 lights out and lavatory sink hot water does not work	
Cell #16 lights out	
Cell #11 toilet leaking and observed commissary (noodles) eaten by mice	
Cell #9 needs a mattress and ceiling has a leak	
Cell #8 leaking in cell	
Cell #4 lavatory sink does not work	
Cell #2 lavatory sink water pressure low	
Cell #1 window will not close	
Top Tier	
Cell #39 lavatory sink draining slow	
Cell #38 lavatory sink hot water pressure low	
Cell #33 toilet leaks	

Cell #31 lavatory sink hot water does not work	
Cell #22 lavatory sink water pressure is high	
Cell #23 lavatory sink hot water does not work	
Six (6) lights out in dayroom area	
Unit 29 Bldg. I / Zone A	
Building Closed	
Unit 29 Building I/Zone B	
Building Closed	
Unit 29 Bldg. J / Zone A	
Cell #13 paint peeling in ceiling	
Cell #18 lavatory sink cold water pressure is high	
Cell #36 toilet leaks and window will not open	
Cell #23 lights out	
Cell #26 window will not close	
Cell #20 toilet does not work	
Cell #22 lavatory sink hot water does not work	
Dayroom has three (3) lights out	
Unit 29 Bldg. J / Zone B	
Exit light out to exit door to yard	
Cell #5 ceiling leaks and wall has paint puckering up	
Cell #4 lavatory sink water pressure low	
Top Tier	
#4 shower does not work	
Cell #38 toilet leaks	
Unit 29 Bldg. K / Zone A	
Building Closed	
Unit 29 Bldg. K / Zone B	
Building Closed	
Unit 29 Bldg. L / Zone A	
Window cracked at entry to building	
Exit door to yard needs to add a weather strip	
Cell #2 lavatory sink cold water does not work	
Cell #3 toilet does not work	
Cell #11 has smoke damage	
Cell #12 Offender has no mattress and no clothes	
Cell #13 Offender has no mattress and no clothes	
Stair to top tier has sharp metal that needs removing	
Top Tier	
Cell #40, 38, and 34 lights are out	
Cell #33 lights will not turn off	
6 th shower door will not open	
Cell #31 lavatory sink hot water pressure low	
Dayroom has five (5) lights out	
Unit 29 Bldg. L / Zone B	
3 rd shower does not work	
Cell #17 toilet stopped up and observed a fan hooked up with spliced wires	
Cell #5 toilet water pressure is low	
UNIT 29 Kitchen	

No critical food violations were found	
Observed an open gas line in kitchen	
Observed oven draining water onto the floor	
Inmate Restroom	
Two (2) lights out	
3 rd urinal does not work	
Unit 29 Gym	
Barbershop did not have barbicide for sanitizing clippers	
Rest room need labeling offender restroom	
MSP Unit #32-Laundry	
Lint compartment on 3rd dryer needed cleaning (Corrected on site)	
Dryer #1 out of order (W/O # 44702)	
1 st urinal in offender restroom has a leak	
2 nd toilet is missing	
Unit 25	
A-zone	
Tile need replacing in shower	
Observed a handicapped offender housed in area with no handicapped accessible showers	
Shower floor holding water	
3 rd Shower handle is missing	
Cubicle #1-6 three (3) lights are out	
Cubicle #7-4 three (3) lights are out	
Cubicle #19-34 two (2) lights are out	
Cubicle #35-40 all lights are out	
Observed exposed wires in cube #47-52	
Water Fountain not working	
B-zone	
Shower not draining holding water	
#4 Toilet will not flush	
Tile on floor need replacing	
Observed exposed wires in cube #61-66	
Lights out throughout the zone	
No exit light	
Observed exposed wires cube #113-120	
Observed a Bird flying around on the zone	
C-zone	
1 st lavatory sink leaks	
Shower floor need replacing	
1 st shower knob is missing	
2 nd shower does not work	
Cubicle #121-126 lights are out	
Cubicle #127-132 one (1) light is out	
Cubicle #133-138 lights are out	

Cubicle #139-154 lights are out	
Cubicle #155-160 lights are out	
Cubicle #161-166 lights are out	
Cubicle #167-172 three (3) lights are out	
Cubicle #173-180 No lights are working	
Electrical Outlet by TV burned out	
D-Zone	
2 nd Shower on left side knob is missing	
3 rd shower on left showerhead is missing	
Observed a Metal towel rack with sharp points near shower	
Cubicle #187-192 one (1) light is out	
Cubicle #193-198 three (3) lights are out	
Cubicle #199-214 three (3) lights are out	
Cubicle #221-226 exposed electrical wires	
Cubicle #227-232 three (3) lights are out	
Zone exit light is missing	
Observed exposed electrical wires above door	
Mechanical Room/Boiler Room	
Observed paint and cleaning supplies stored with boiler	
Observed room infested with bird droppings	
Observed a leak from toilet into boiler room	
FOOD SERVICE SANITATION-Unit 25 Kitchen	
Observed kitchen floor drain holding rotten foods	
Observed garbage disposal holding breakfast foods	
Observed standing water at back door near outside walk-in cooler	
Barber Shop	
No discrepancies found during this inspection	
MSP Unit #26 A Building	
A-Zone	
Entrance and back Exit lights are not working	
Observed Holes in wall above urinals	
4 th and 5 th showers do not work	
5 th shower knob is missing	
Observed Mold on shower floor	
Cubicle #19-32 two (2) lights are out	
Cubicle #33-38 one (1) light is out	
B-Zone	
2 nd , 4 th , 5 th and 6 th showers are not working	
Observed a metal towel rack near shower with sharp points	
1 st urinal leaking	
Hole above 1 st urinal	
#75-88 one light out	

#107-112 exposed wires	
#107-112 One light out	
Observed an electrical outlet with no cover under water fountain	
C-Zone	
Observed a metal towel rack near shower with sharp points	
Observed Hole in wall between urinals	
4 th shower no knob	
Cubicle #157-162 one (1) light is out	
D-Zone	
4 th toilet stopped up	
Floor in shower need replacing	
Cubicle #187-200 two (2) lights are out	
Cubicle #219-224 one (1) light is out	
Observed handicapped offender housed with no Handicapped Accessible Shower	
E-Zone	
CLOSED	
MSP Unit #26 B Building	
Hall Area	
Observed a water leak in Pipe Chase Room	
Zone-A	
Knobs and shower heads missing from all showers	
Flood light not working on front and rear exit lights	
Cubicle #8-14 one (1) light is out	
Observed Bird nests in windows at beds #1-7	
B-Zone	
2 nd sink stopped up	
1 st urinal does not work	
2 nd urinal missing	
3 rd urinal stopped up	
1 st toilet low water pressure	
4 th toilet handle is missing	
All showers are missing the knobs	
Back exit light out	
Cubicle #76-83 one (1) light is out	
Cubicle #91-97 one (1) light is out	
Cubicle #91-97 observed a bird nest in window	
Cubicle #104-108 one (1) light is out	
BAGGO Game used for ash tray	
Water Fountain cover is missing	
C-Zone	
1 st and 2 nd urinals do not work	
3 rd urinal has a leak	

Lights above the toilets are out	
Access Panel in ceiling above showers is hanging down	
All showers are missing the knobs	
Cubicle #109-115 one (1) light is out	
Cubicle #130-137 one (1) light is out	
Cubicle #145-151 Observed a Bird Nest in window	
Cubicle #158-162 two (2) lights are out	
D-Zone	
1 st , 2 nd and 3 rd urinals do not work	
1 st and 3 rd shower on right has no shower head or knobs	
Observed a metal towel rack near shower with sharp points	
Cubicle #163-169 observed a bird nest in window	
Cubicle #170-176 observed a bird nest in window	
Cubicle #177-183 one (1) light is out	
Cubicle #184- 191 one (1) light is out	
Cubicle #184-191 observed a bird nest in window	
E-Zone	
CLOSED	
Unit 26 Kitchen-FOOD SERVICE SANITATION	
No critical food violations were found	
1 st Furnace Unit vent cover is missing	
2 nd Furnace Unit vent cover is missing	
Ceiling has chipped paint in Freezer	
Three (3) compartment sink needs labeling	
No thermometer inside freezer/cooler (corrected on site)	
Processing Kitchen	
No critical food violations were found	
1 st urinal in offender restroom has a leak	
Cold Storage	
Observed cans of food shelved with no date markings	
Observed wall near dock with broken concrete center blocks	
Canteen	
Tables needed for sorting commissary foods to avoid use of floor	



Front School kitchen rat droppin under table 9/26/2022

Front School kitchen rat droppings under the table



Front School kitchen rat droppings underneath the table on floor

Front School Ice machine need
cleaning 9/26/2022

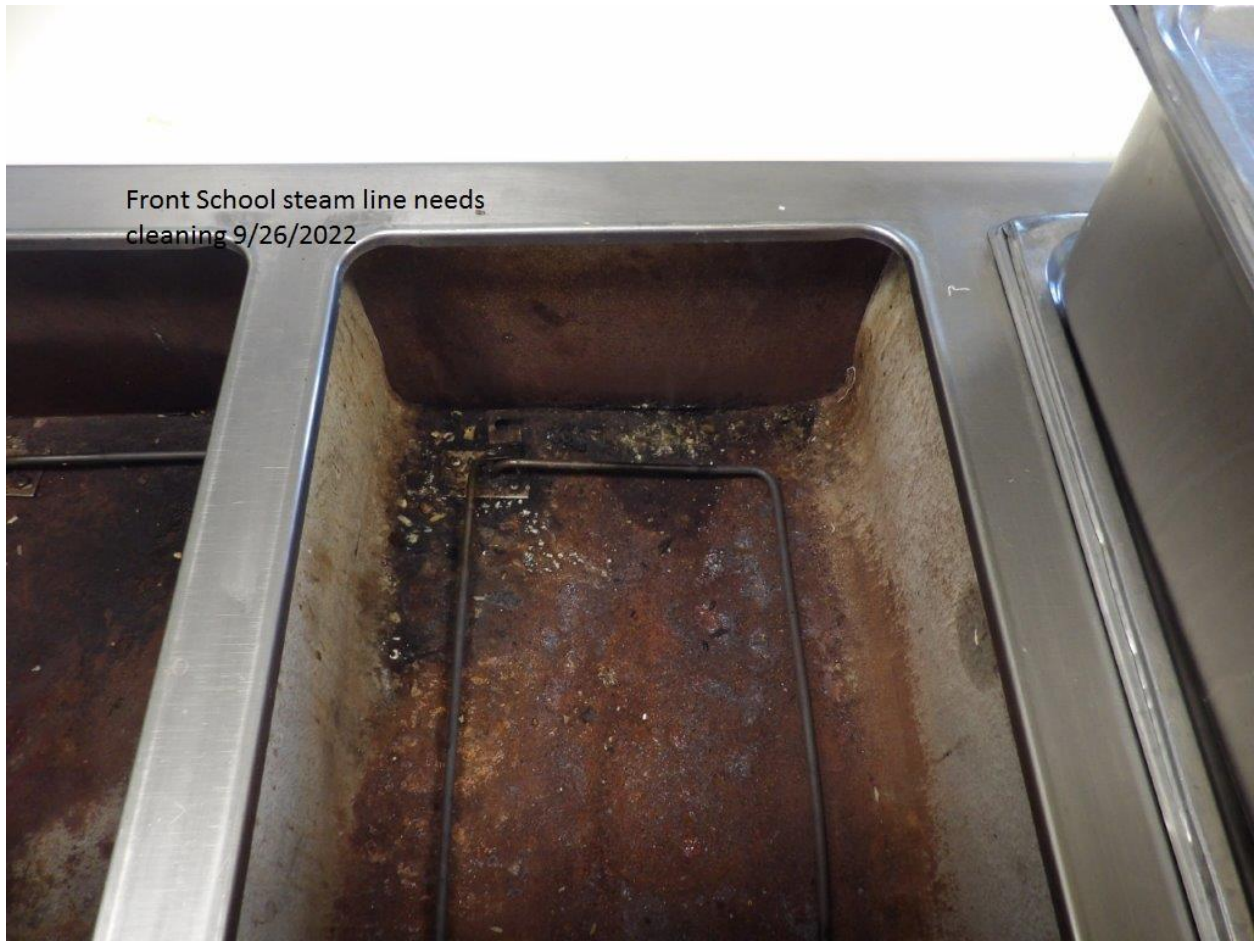


Front School ice machine needs cleaning

Front School Warmer has
cigarette butts/ash on side of
warmer 9/26/2022



Front School warmer has cigarette butts on the outside of the warmer



Front School kitchen serving steam table needs cleaning

Front School School storage room #
3 need rat repellent trap 9/26/2022



Front School storage room #3 needs rat repellent traps

Front School need new line
ran from air conditioner unit
9/26/2022



**Front School drain line needs replacing in front of the kitchen
storage room door**

Unit 31 area by ice machine need
floor board repair 9/26/2022



**Housing Unit #31 wall near the ice machine damaged by
outside flood water**



Unit 31 room #2 sink
inoperable 9/26/2022

Housing Unit #31 lavatory sink is stopped up



Housing #31 sink leaking



Housing Unit #31 inmate bathroom urinal will not flush



Unit 31 A zone Inmate shower
area drain stopped up 9/26/2022

Housing Unit #31 inmate bathroom shower drain is stopped up

Unit 31 A zone rail needs to be secured
9/26/2022



Housing Unit #31 A-Zone handicap handle is loose from the bathtub



Housing Unit #31 a cat outside an inmate's window seal



Unit #28 Kitchen window shattered



Unit 28 Kitchen shattered glass in
dinning hall 9/26/2022

Unit #28 Kitchen window shattered in dining hall



Unit 28 D zone shower floor need repair/holding
water 9/26/2022

Unit #28 D-Zone - Shower is missing tiles and holding water



Unit #28 - D-Zone shower is missing tiles and holding water



Unit 28 A zone room #29-34 light
inoperable 9/26/2022

Unit #28 - A-Zone light does not work in cubicles #29-34



Unit #28 - A-Zone toilet runs water continuously



Unit 28 B zone bed 57-62 cinder block
removed above sink 9/26/2022

**Unit #28 - B-Zone - Cinder blocks are loose from the ceiling above beds
#57-62**

Unit 28 C zone 3rd shower knob missing
9/26/2022



Unit #28 - C-Zone shower handle is missing



Unit 28 Mechanical room
stack pipe exposing carbon
monoxide 9/26/2022

Unit #28 - Mechanical Room boiler exhaust pipe is broken and possibly exposing carbon monoxide

Unit 28 Mechanical room exposed
wires 9/26/2022



Unit #28 - Mechanical Room has exposed wires

Unit 28 Mechanical room pipes
need repair 9/26/2022



Unit #28 - Mechanical Room boiler has corrosive exhaust pipes



Unit #28 - Mechanical Room furnace door cover missing and has spider webs



Unit 28 Mechanical Room electrical box
need cover 9/26/2022

Unit #28 - Mechanical Room electrical box door cover missing

Unit 42 laundry ceiling need repair
9/26/2022



Unit #42 - Laundry Room has hole in the ceiling



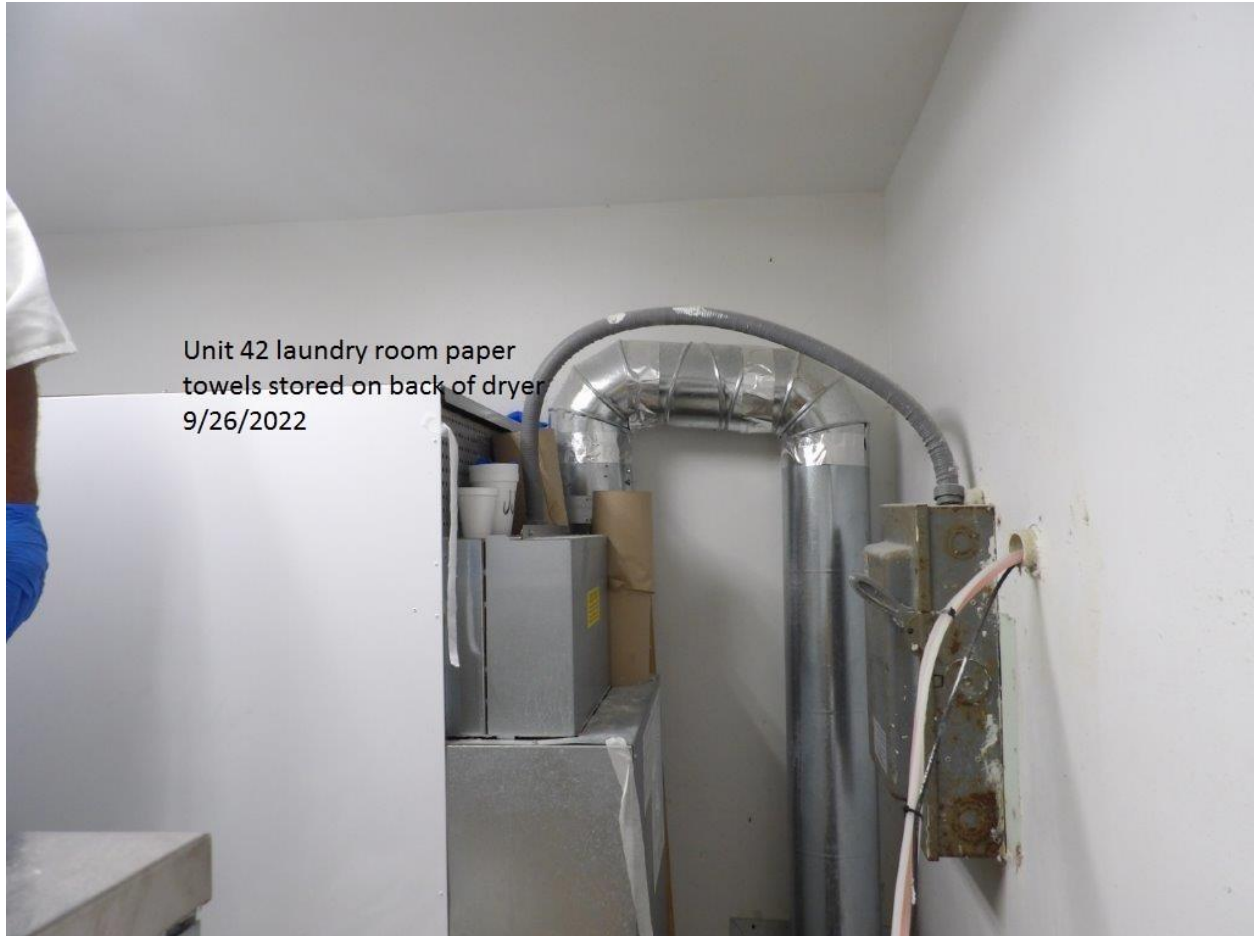
Unit 42 laundry room lint filter
need cleaning 9/26/2022

Unit #42 - Laundry Room dryer lint compartment needs cleaning



Unit 42 laundry room
garbage bag on line of
washer machine 9/26/2022

Unit #42 - Laundry Room washer line has a garbage bag tied around for leakage



Unit 42 laundry room paper
towels stored on back of dryer
9/26/2022

Unit #42 - Laundry Room dryer has paper towels and styrofoam cups stored near dryer flames



Unit #42 - South wing bathroom water pressure low



Unit 42 Southward toilet seat
missing 9/26/2022

Unit #42 - South wing bathroom toilet seat is missing

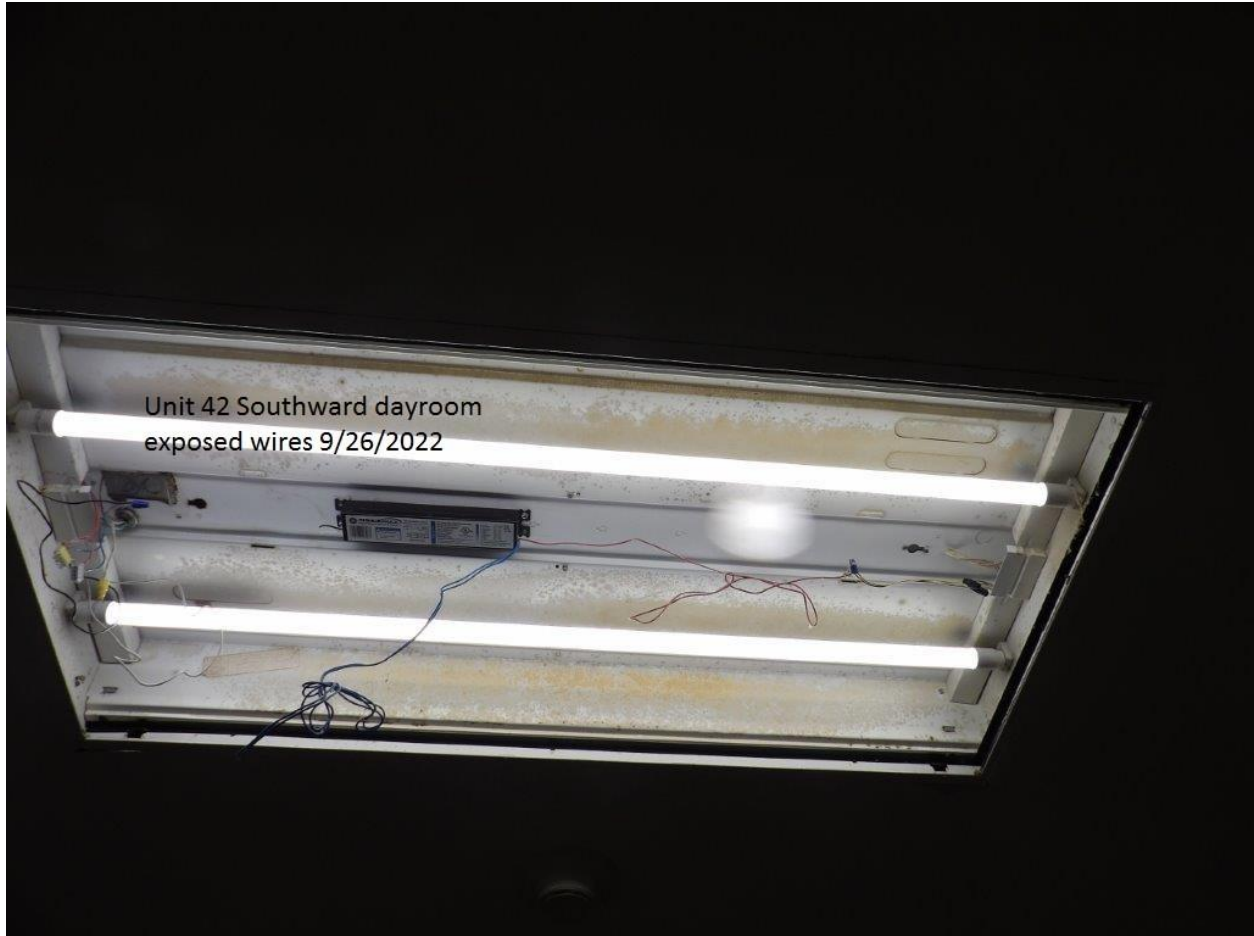


Unit #42 - South wing shower floor has paint peeling and drain cover is missing

Unit 42 Southward shower head
missing 9/26/2022



Unit #42 - South wing shower head is missing



Unit #42 - South wing dayroom light fixture cover is missing and has exposed electrical wires

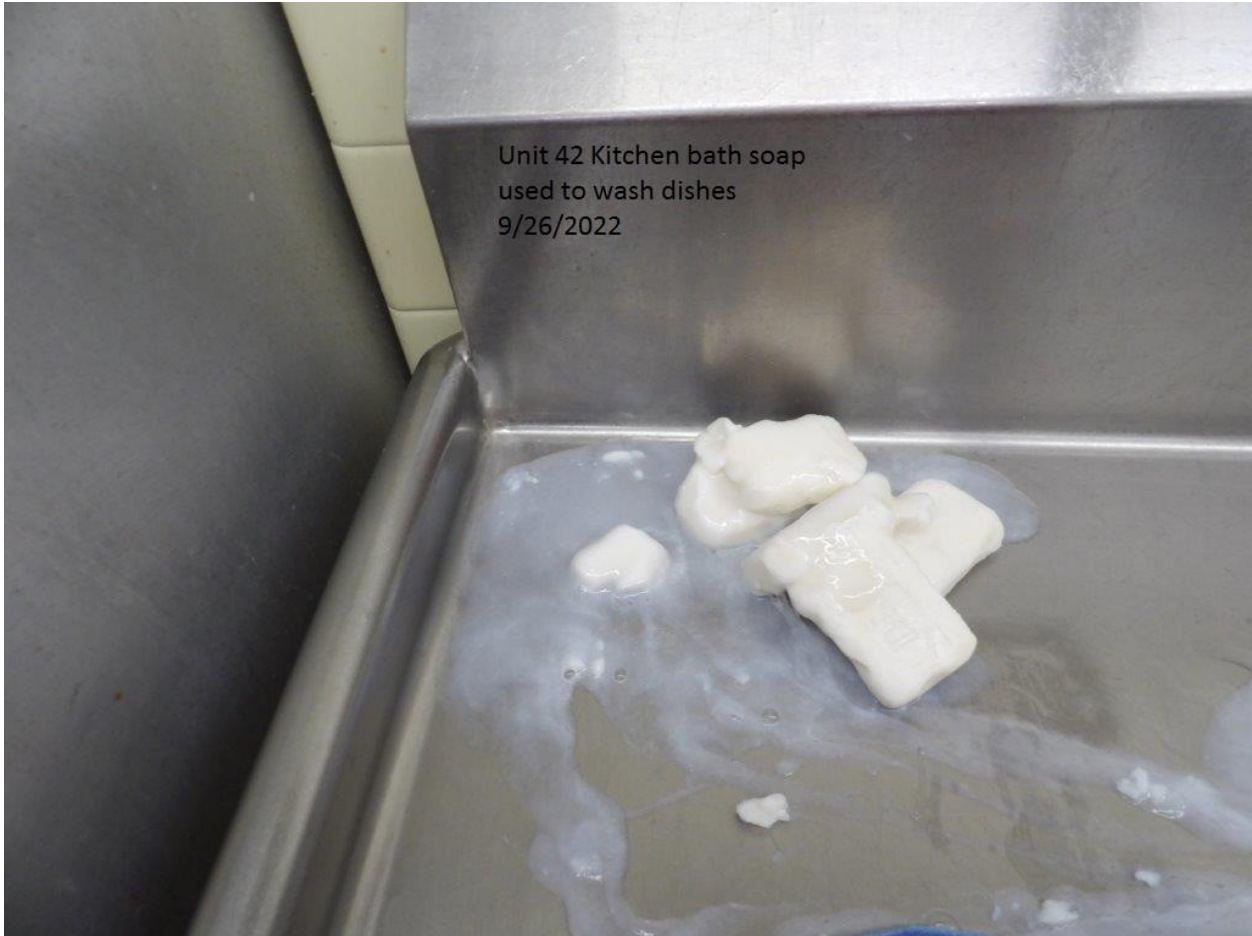


Unit 31 D zone Inmate urinal
inoperable 9/26/2022

Unit #31 - D-Zone bathroom urinal is stopped up



Unit #42 - Kitchen cooler is leaking water in the bottom



Unit #42 - Kitchen utilizing bath soap in a three (3) compartment sink to wash dishes with no sanitizer



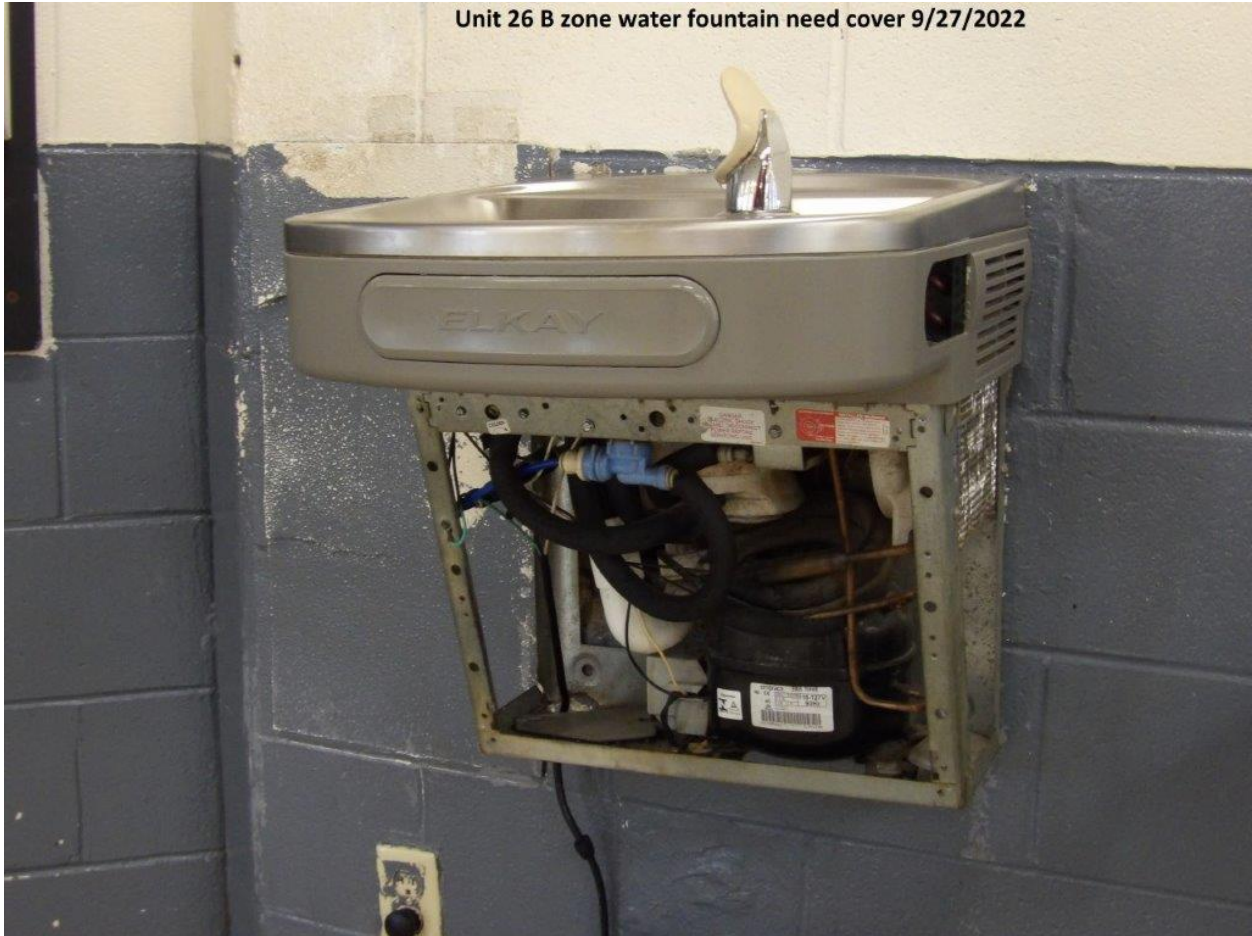
Unit #42 - West wing bathroom toilet seat is missing

Unit 26 kitchen paint peeling inside freezer 9/27/2022



Unit #26 - Kitchen freezer has paint peeling from the top

Unit 26 B zone water fountain need cover 9/27/2022



Unit #26 - B-Zone water fountain is missing the front cover



Unit 26 A bldg B zone shower floor need repair 9/27/2022

Unit #26 - A-Bldg B-Zone shower is missing tiles and holding water

Unit 26 A bldg bathroom hole in wall by urinals 9/27/2022



Unit #26 - A-Bldg. B-Zone bathroom wall has holes between the urinals



Unit #26 - A-Bldg. C-Zone bathroom wall has a hole between the urinals

Unit 26 A bldg D zone rth toilet inoperable 9/27/2022



Unit #26 - A Bldg. D-Zone right toilet will not flush

Unit 26 A zone all showers missing shower heads 9/27/2022



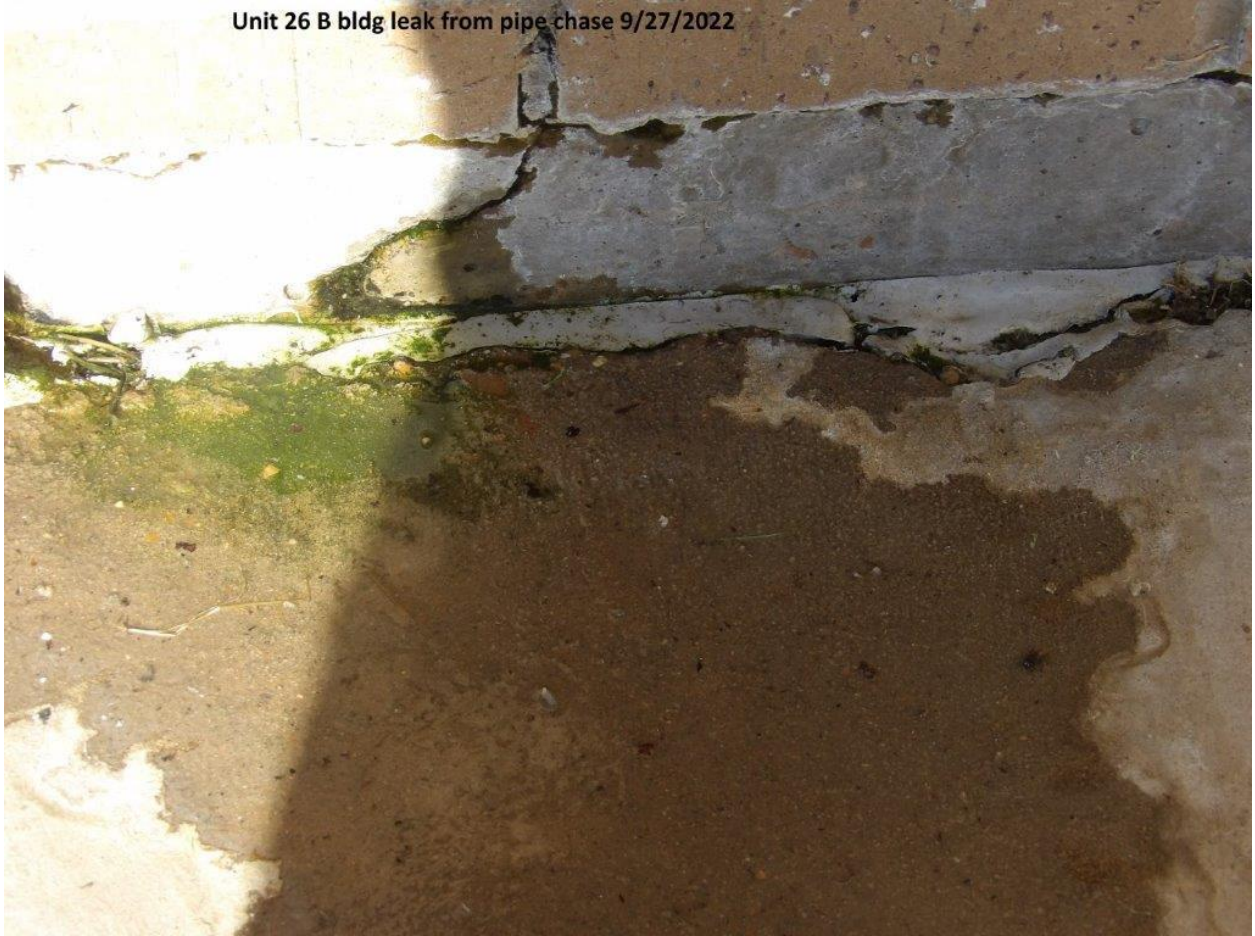
Unit #26 - A-Zone showers are missing handles

Unit 26 A zone bird nest in window in cube 1-7 9/27/2022



Unit #26 - A-Zone cubicles #1-7 has a bird nest in the window

Unit 26 B bldg leak from pipe chase 9/27/2022



Unit #26 - B-Bldg, The pipe chase leaks water from inside the building



Unit #26 - B-Zone 1st urinal does not work



Unit 26 B zone
2nd urinal
missing
9/27/2022

Unit #26 - B-Zone 2nd urinal is missing and has a hole in the wall

Unit 26 B zone 4th toilet missing flush handle 9/27/2022



Unit #26 - B-Zone 4th toilet is missing the flush handle

Unit 26 B zone cube 91-97 bird nest in window 9/27/2022



Unit #26 - B-Zone Cubicles #91-97 has a bird nest in the window



Unit 25 Kitchen back dock need gravel 9/27/2022

Unit #25 – The kitchen loading dock has standing water



Unit 25 Kitchen drain, not draining 9/27/2022

Unit #25 - The kitchen floor drain is backing up with food



Unit #25 - Mechanical room has paint and chemicals stored in the boiler room



Unit 25 Mechanical room pipe
leaking from inamte bathroom
9/27/2022

**Unit #25 - Mechanical room has water leaking in from the A-Zone
toilet**

Unit 26 Dining Hall air
conditioner need doors
9/27/2022



Unit #26 – The kitchen dining hall furnace room doors are missing



Unit 26 Dining Hall air conditioner need vent cover 9/27/2022

Unit #26 – The dining hall air conditioner vent cover is missing



Unit 26 Inmate bathroom water leak from toilet 9/27/2022

Unit #26 - The bathroom toilet is leaking



Unit #29 - H-Bldg. The entrance floor mat is covered with bird feces



Unit 29 H Azone cell 2 leaking from ceiling . 9-28-22

Unit #29 - H-Bldg. A-zone ceiling has a leak

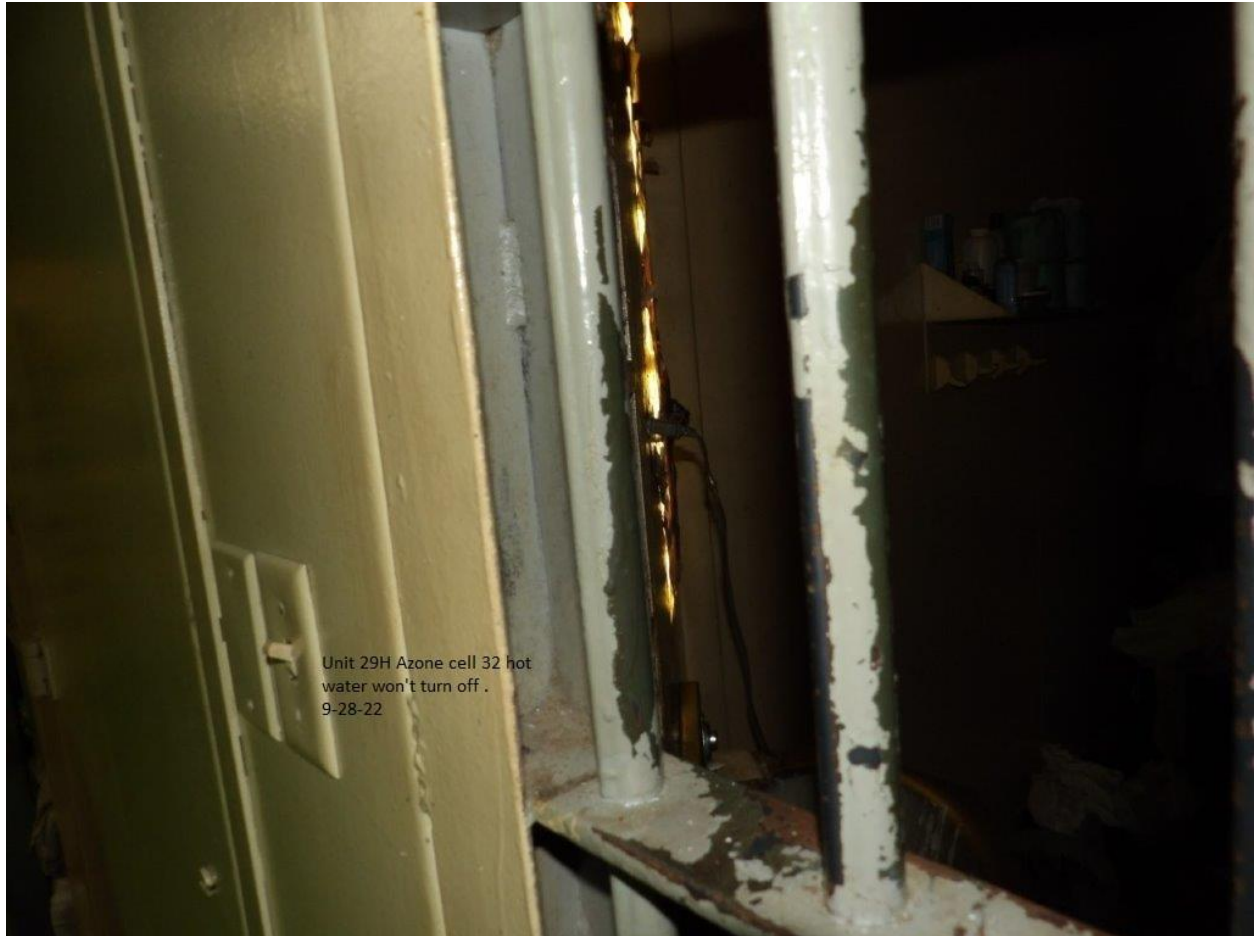


Unit #29 - H-Bldg. A-Zone cell lavatory cold water does not work



Unit 29H Azone cell 34 hot water
inoperable. 9-28-22

Unit #29 - H-Bldg. A-Zone cell lavatory hot water does not work



Unit 29H Azone cell 32 hot
water won't turn off .
9-28-22

Unit #29 - H-Bldg. A-Zone cell hot water runs continuously

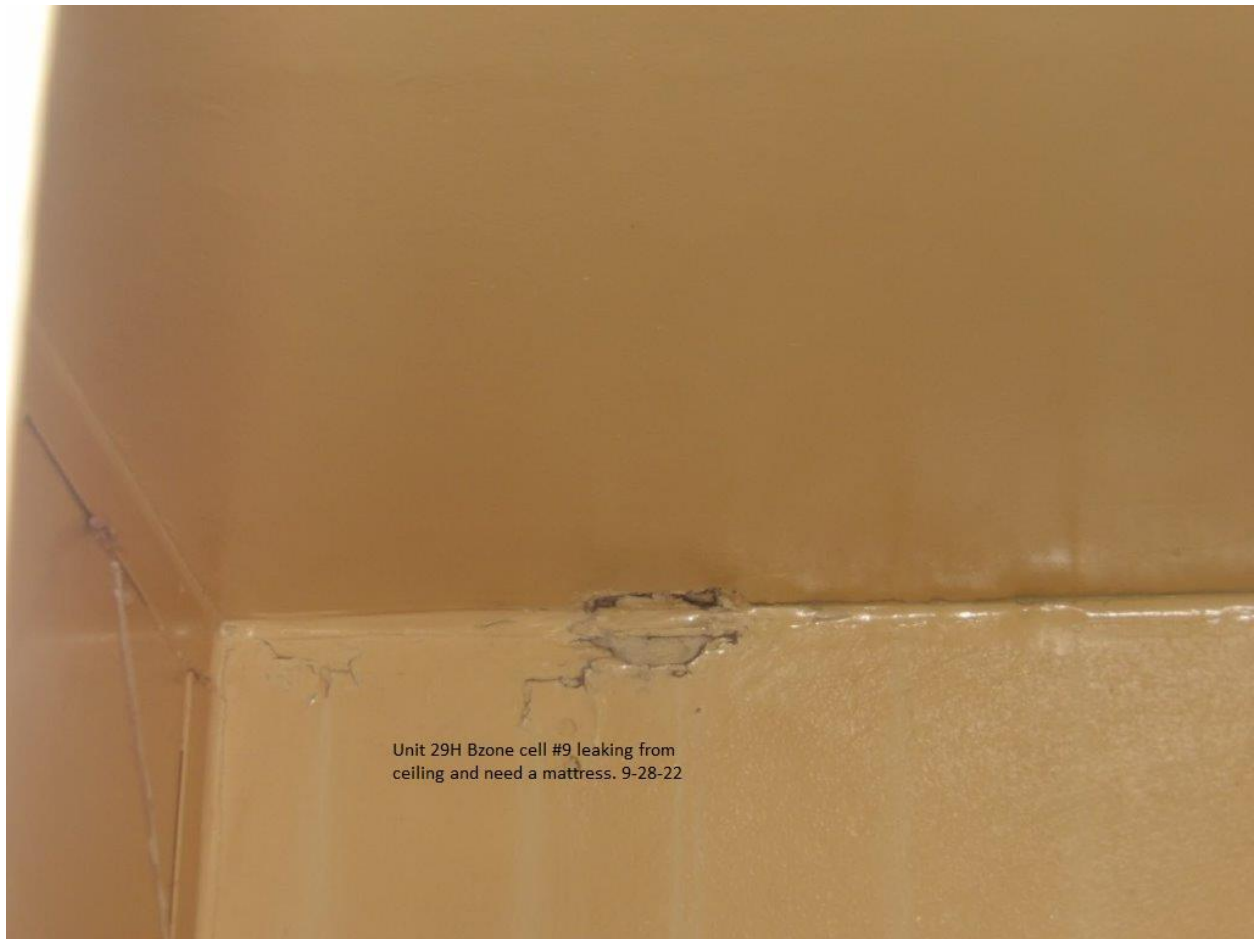
Unit 29H Azone- cell 40 window won't close. 9-28-22



Unit #29 - H-Bldg. A-Zone cell window will not close



Unit #29 - H-Bldg. A-Zone cell lavatory cold water does not work



Unit 29H Bzone cell #9 leaking from
ceiling and need a mattress. 9-28-22

Unit #29 - H-Bldg. A-Zone ceiling has a leak



Unit 29H azone cell #24 light switch broke .
9-28-22

Unit #29 - H-Bldg. A-Zone cell light switch is broken



Unit #29 - G-Bldg. toilet will not flush



Unit 29H Azona Cell 20
hot water
Inoperable, 9-28-22

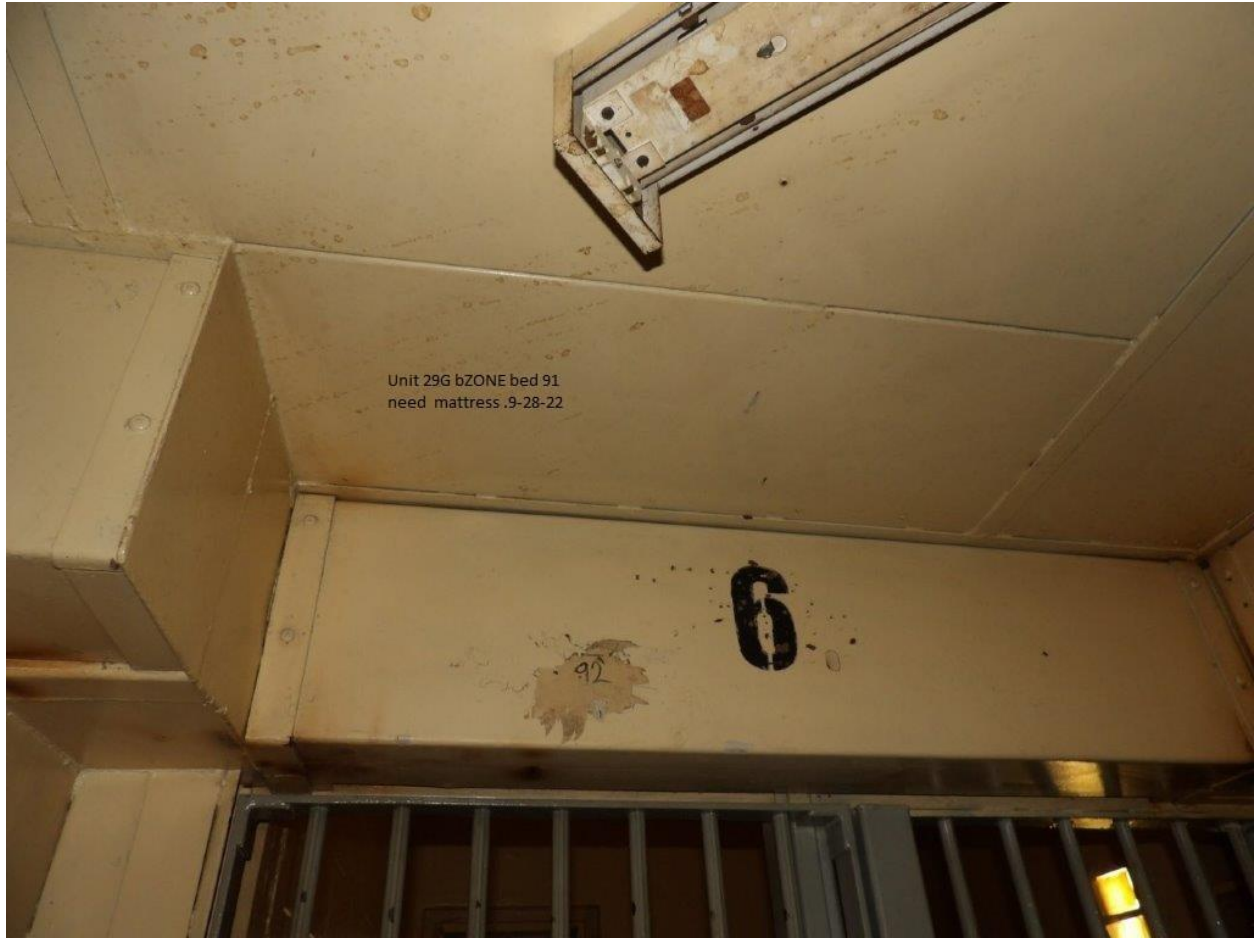
Unit #29 - G-Bldg. ceiling has a leak



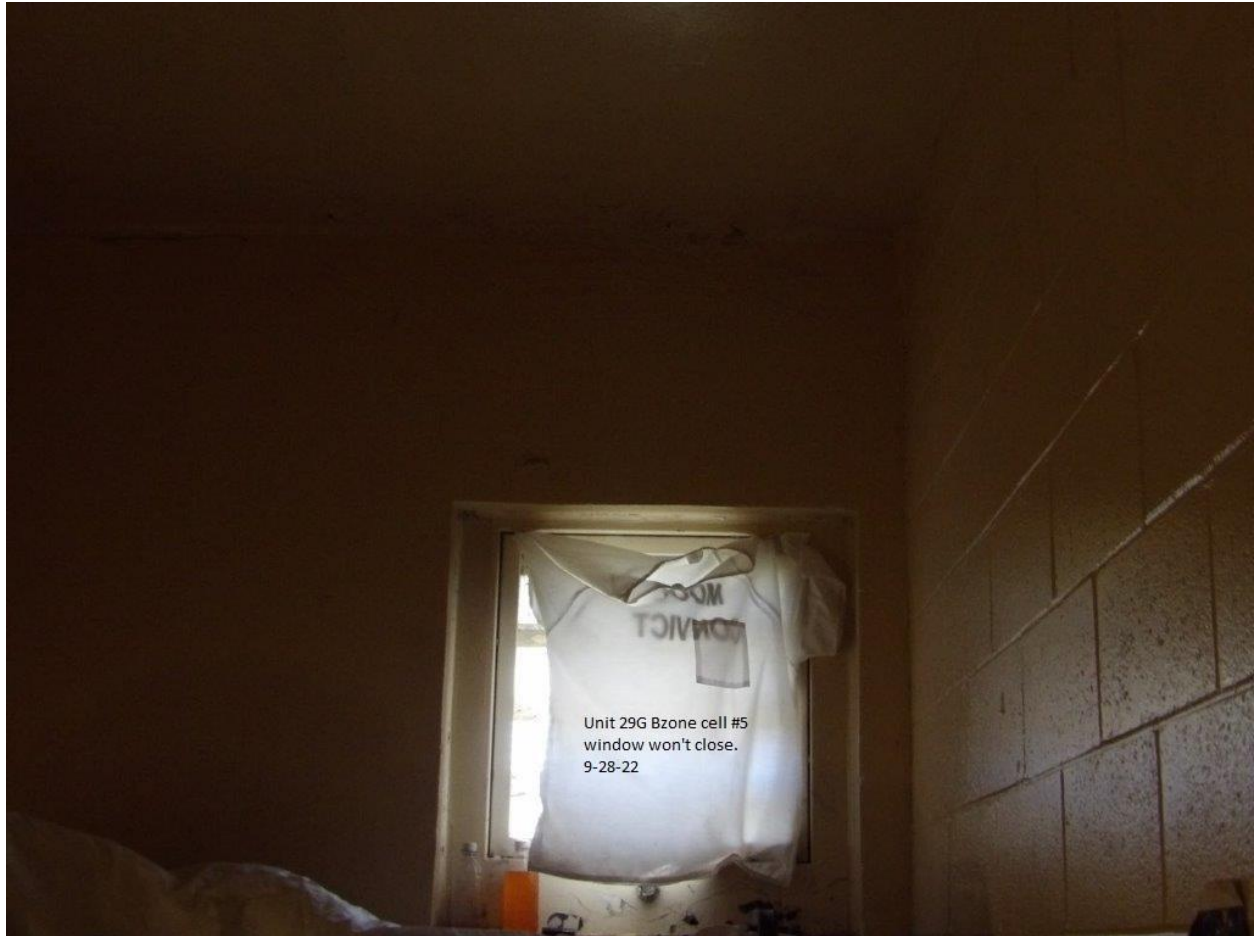
Unit #29 - H-Bldg. B-Zone cell light does not work



Unit #29 - G-Bldg. hall ceiling has a hole



Unit #29 - G-Bldg. B-Zone, Bed #91 has no bed mattress



Unit #29 - G-Bldg. B-Zone cell window will not close

Unit 29G bzone cell 36 window
broke. 9-28-22



Unit #29 - G-Bldg. B-Zone cell #36 window is broken



Unit 29G Bzone cell 35 window
broke.9-28-22

Unit #29 - G-Bldg. B-Zone cell #35 window is broken



Unit 29G Bzone cell # 27 window broke and sink
not draining . 9-28-22

**Unit #29 - G-Bldg. B-Zone cell #36 window is broken and lavatory sink
is stopped up**

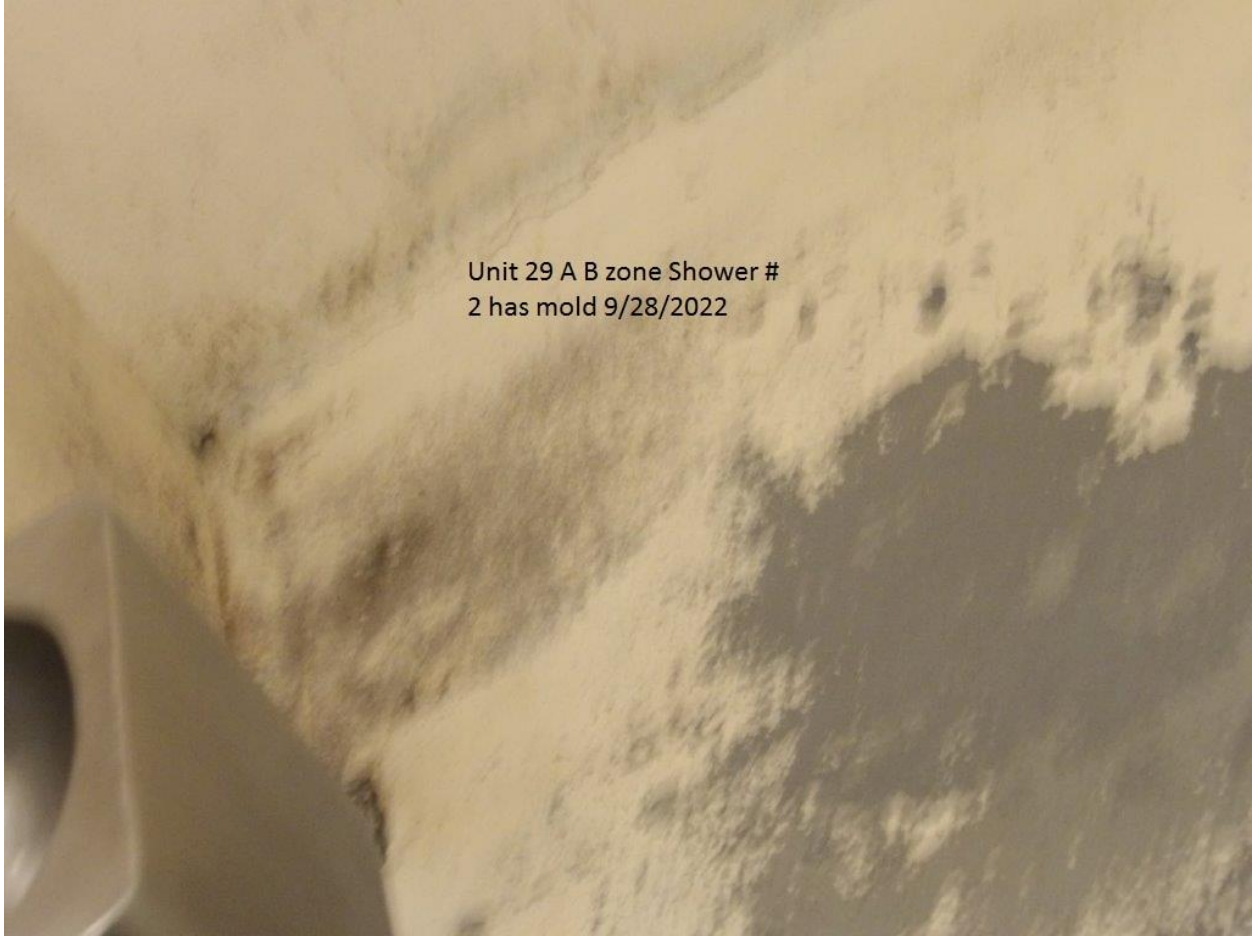


Unit #29 - G-Bldg. B-Zone cell #25 lavatory sink has a leak and is stopped up

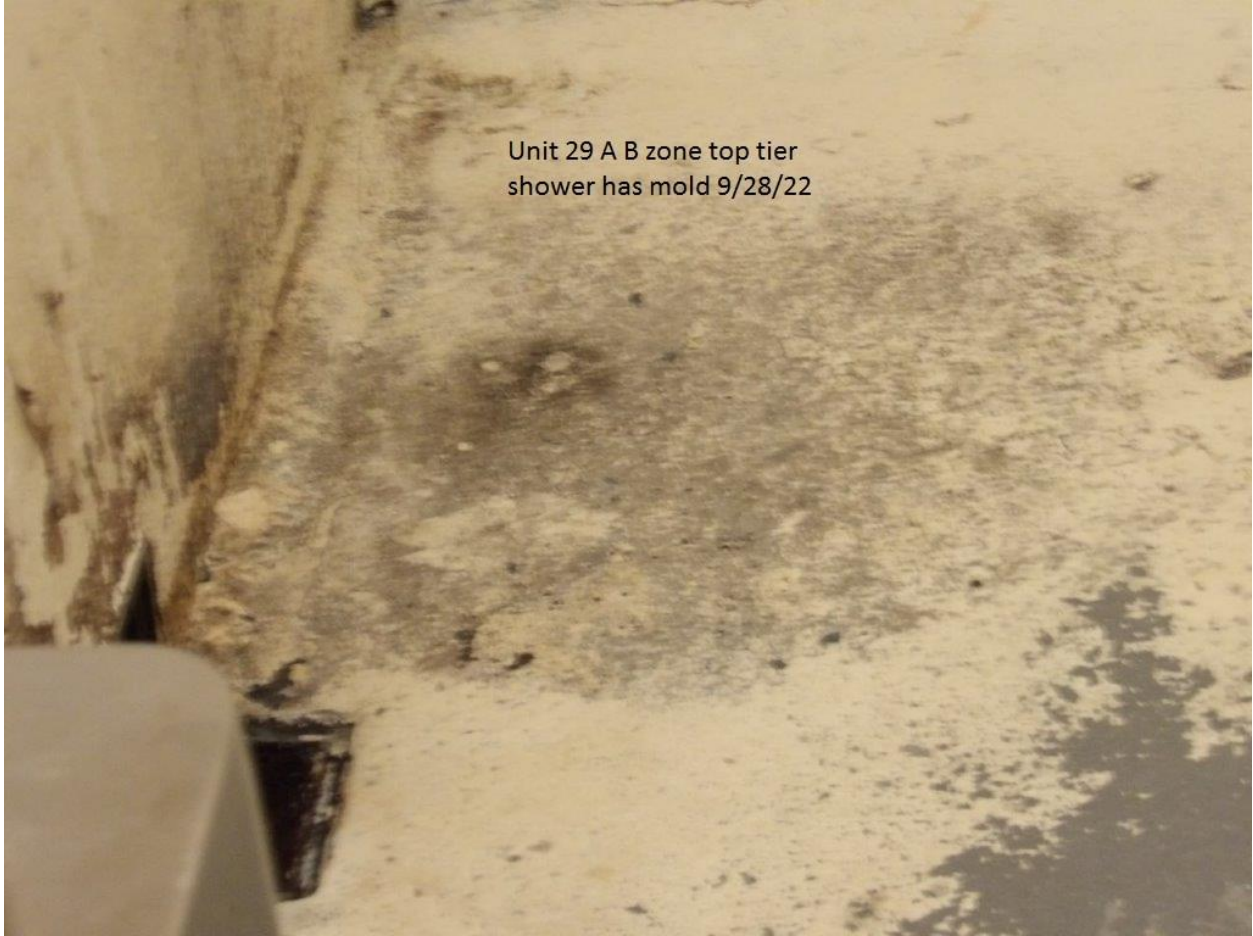


Unit 29 A B zone shower #
2 has no knobs or
showerhead 9/28/2022

Unit #29 - A-Bldg. B-Zone 2nd shower is missing knobs and shower head



Unit #29 - A-Bldg. 2nd shower has mold in the left corner



Unit 29 A B zone top tier
shower has mold 9/28/22

Unit #29 - A-Bldg. B-Zone Top tier of the shower has mold around the floor drain

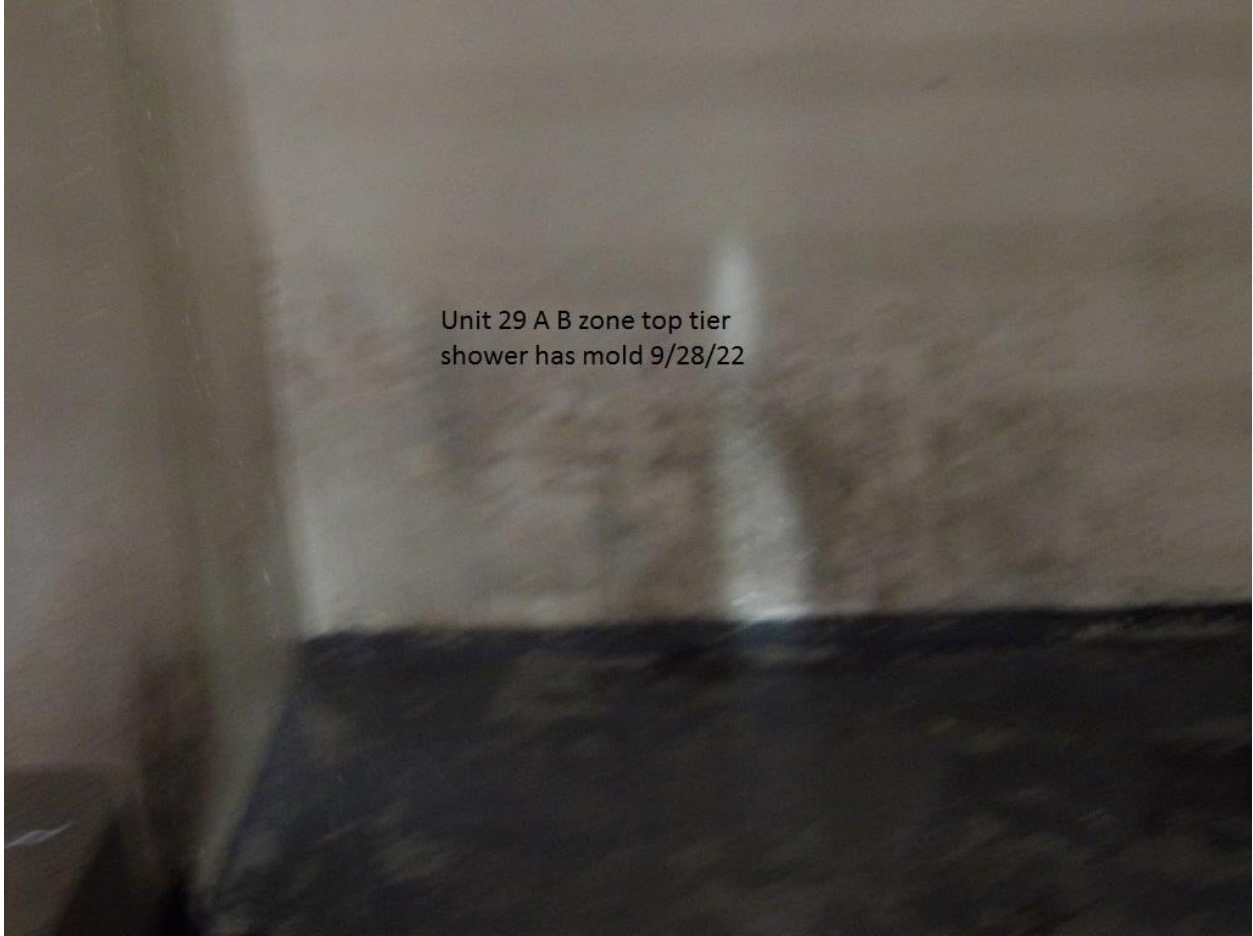


Unit 29 A B zone cell #81
toilet inoperable 9/28/22

Unit #29 - A-Bldg. B-Zone Cell #81 toilet will not flush



Unit #29 - A-Bldg. B-Zone window is missing and light does not work



Unit 29 A B zone top tier
shower has mold 9/28/22

Unit #29 - A-Bldg. B-Zone Top tier shower has mold

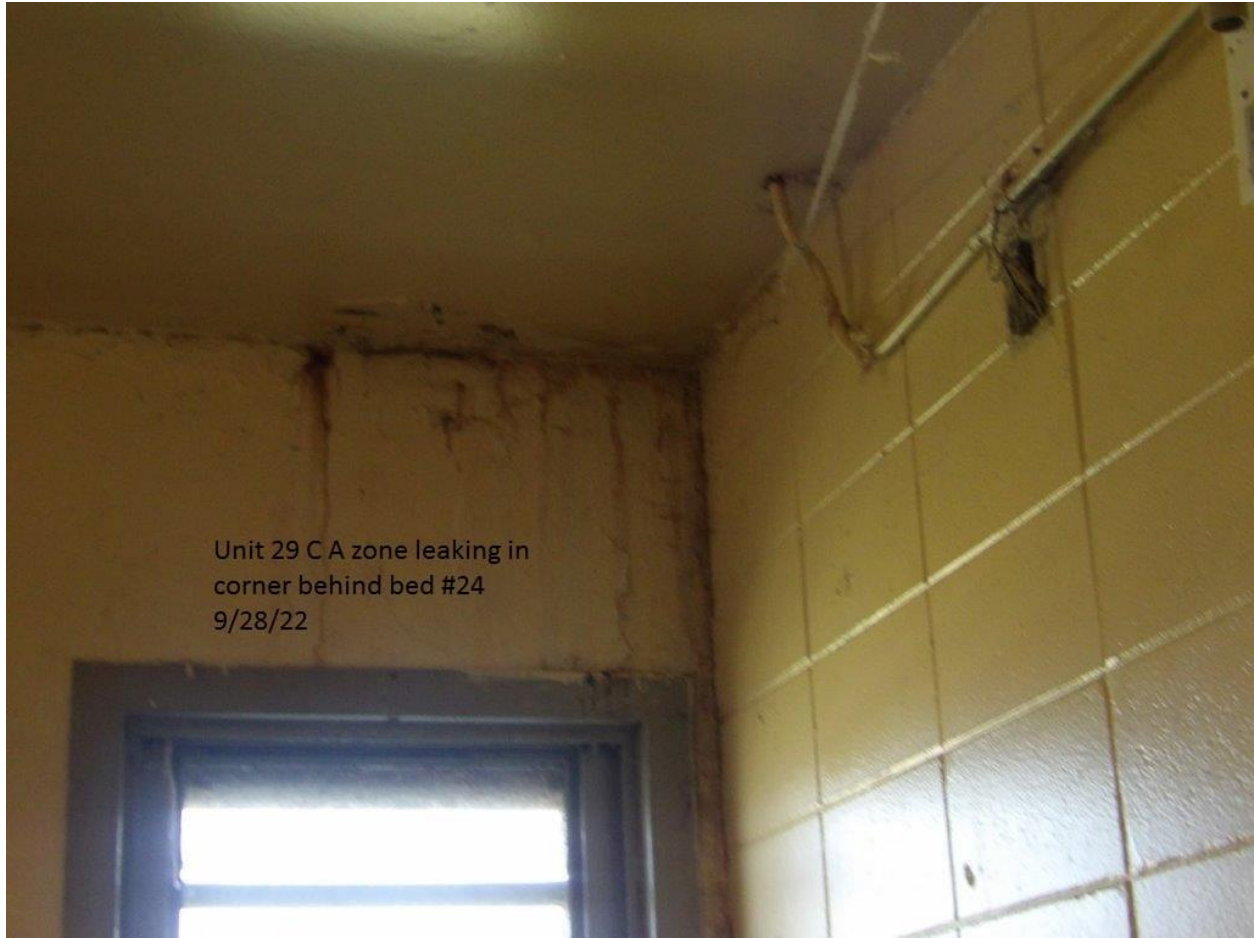


Unit 29 A B zone top tier
both sinks won't stop
running 9/28/22

Unit #29 - A-Bldg. B-Zone Top tier 2nd lavatory sink is missing the faucet head



Unit #29 - A-Bldg. B-Zone cell #68 window is missing and light does not work



Unit #29 - C-Bldg. A-Zone ceiling has a leak



Unit 29 C A zone no lights
and exposed wires
9/28/22

Unit #29 - C-Bldg. A-Zone light fixtures are torn out and has exposed electrical wires

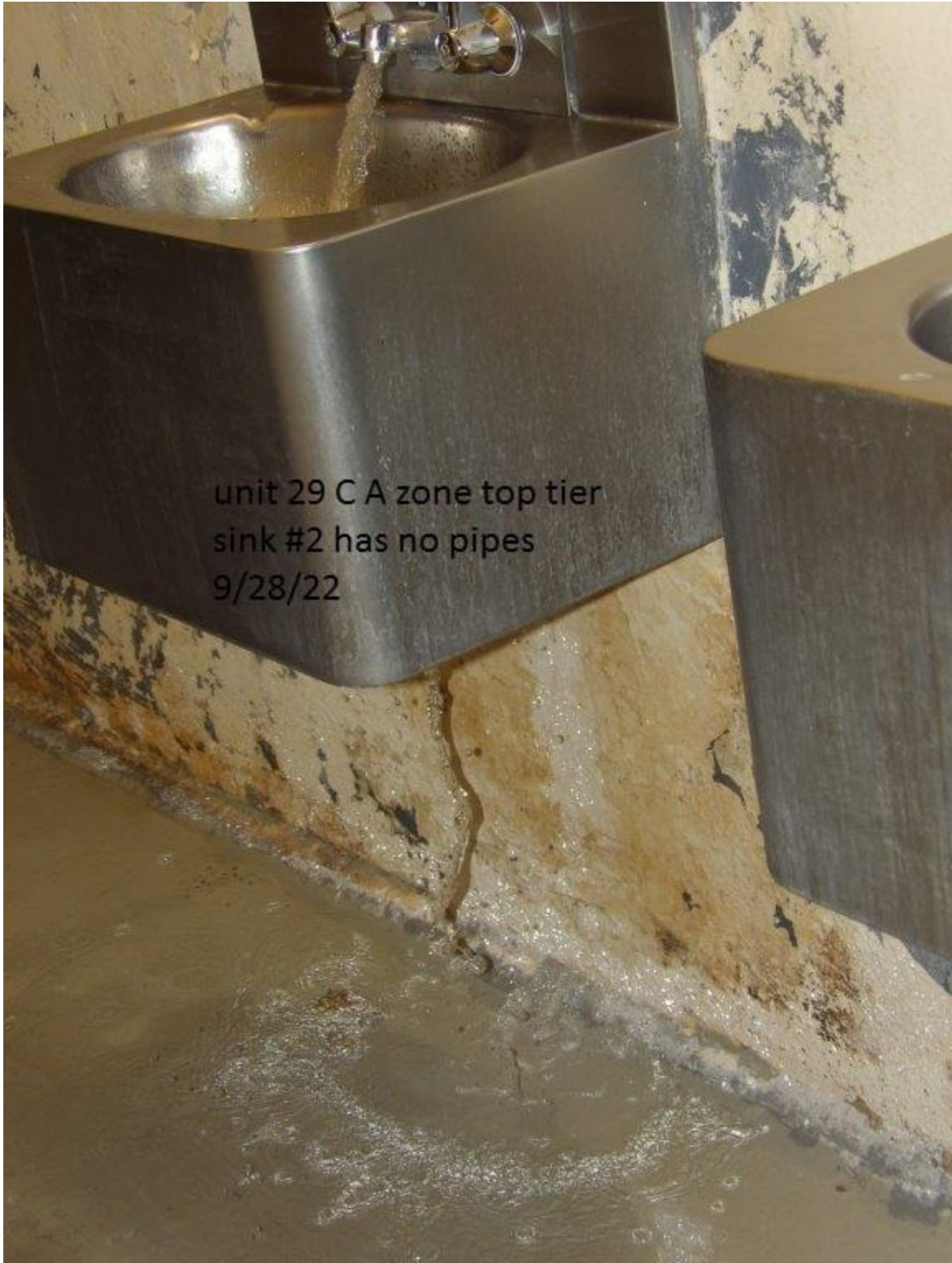


Unit 29 C A zone shower
both sinks inoperable
9-28-22

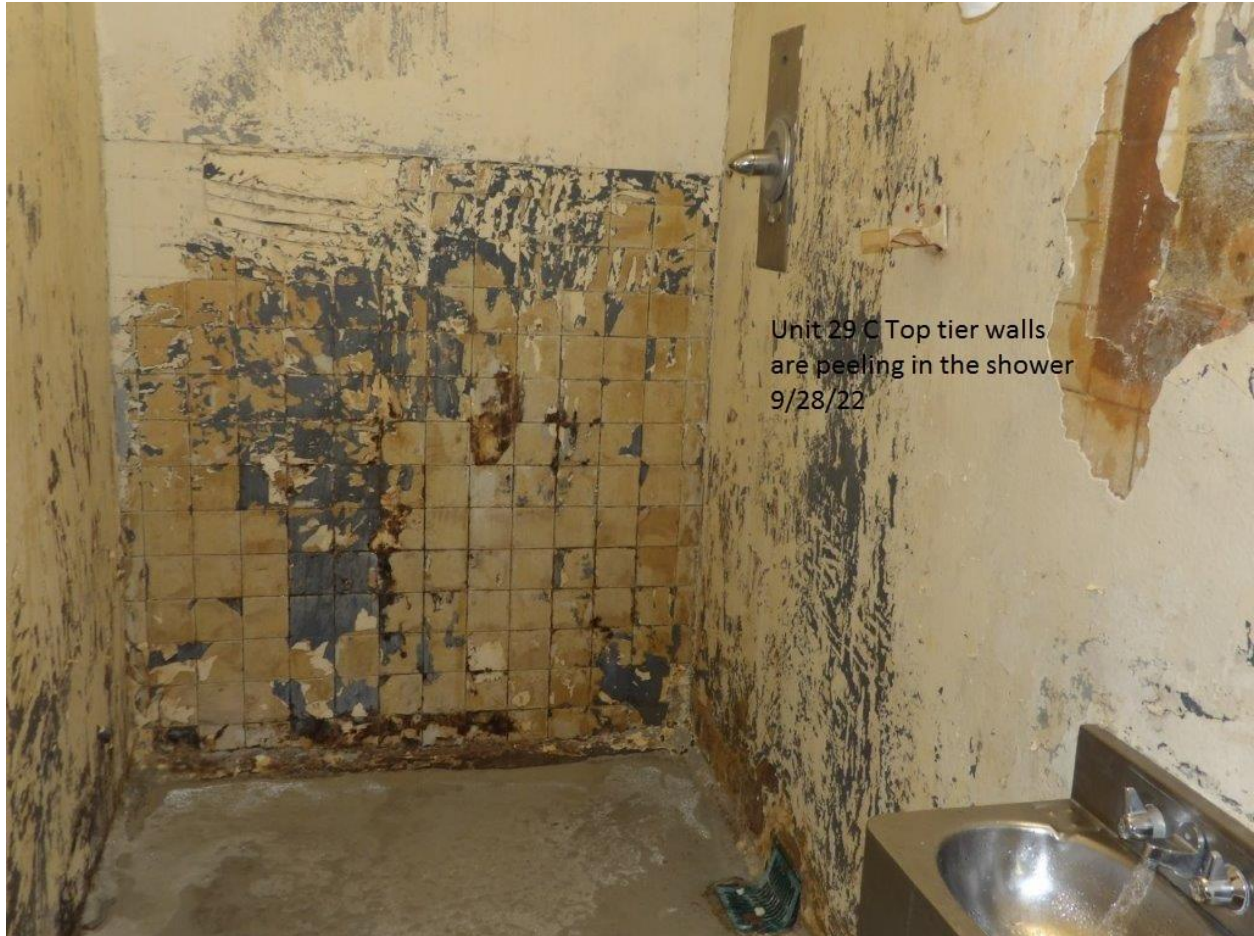
Unit #29 - C-Bldg. A-Zone lavatory sinks do not work



Unit #29 - C-Bldg. A-Zone 1st urinal is stopped up



Unit #29 - C-Bldg. A-Zone Top tier 2nd sink pipes are missing



Unit 29 C Top tier walls
are peeling in the shower
9/28/22

Unit #29 - C-Bldg. A-Zone Top tier shower walls are peeling and tiles are missing



Unit #29 - C-Bldg. A-Zone ceiling metal panel is loose



Unit #29 - C-Bldg. A-Zone ceiling metal panel is torn



Unit #29 - C-Bldg. A-Zone ceiling metal panel is torn

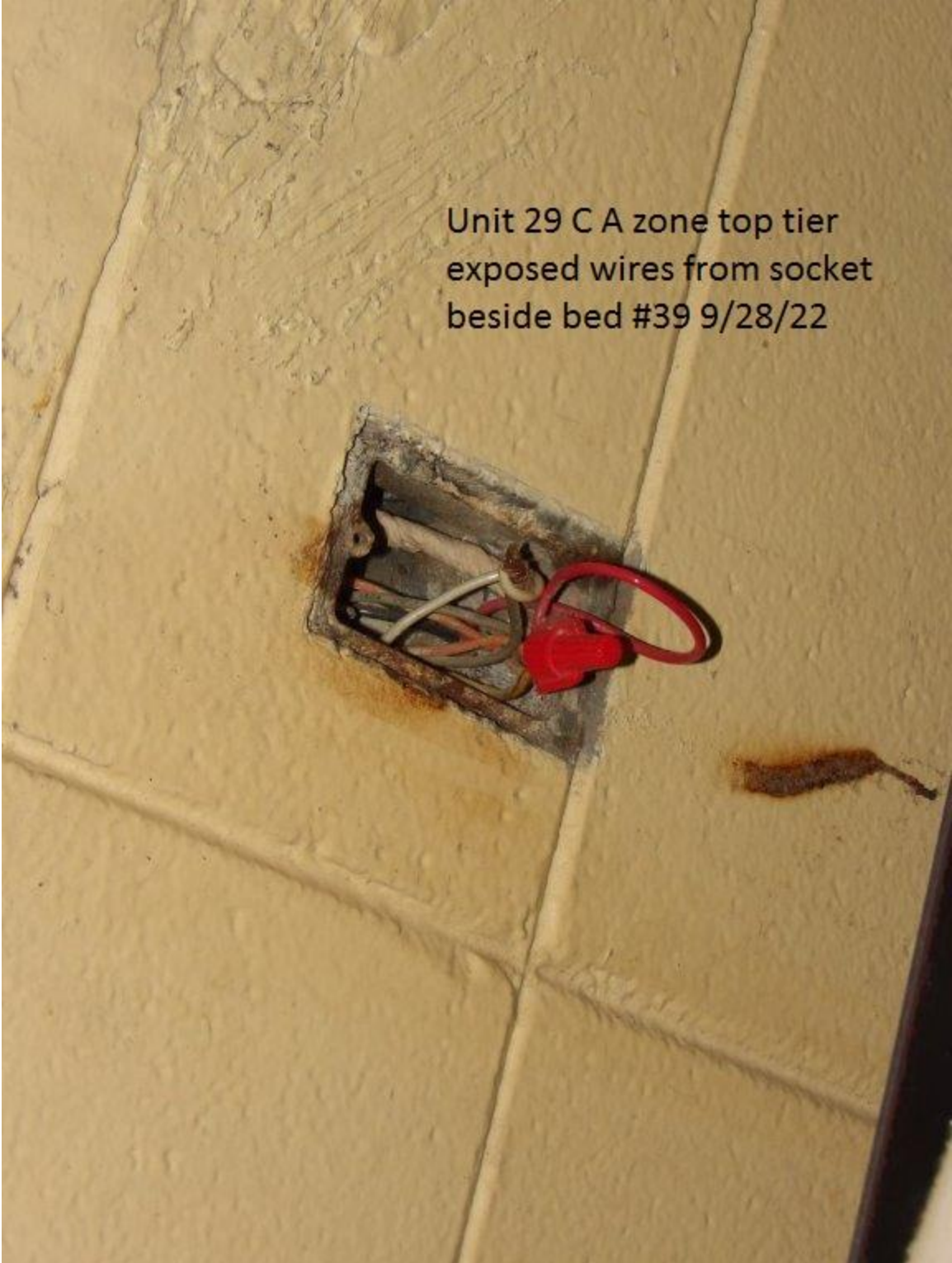


Unit #29 - C-Bldg. A-Zone Top tier has a hole in the wall



Unit #29 - C-Bldg. A-Zone Top tier has a hole in the wall above bed #40

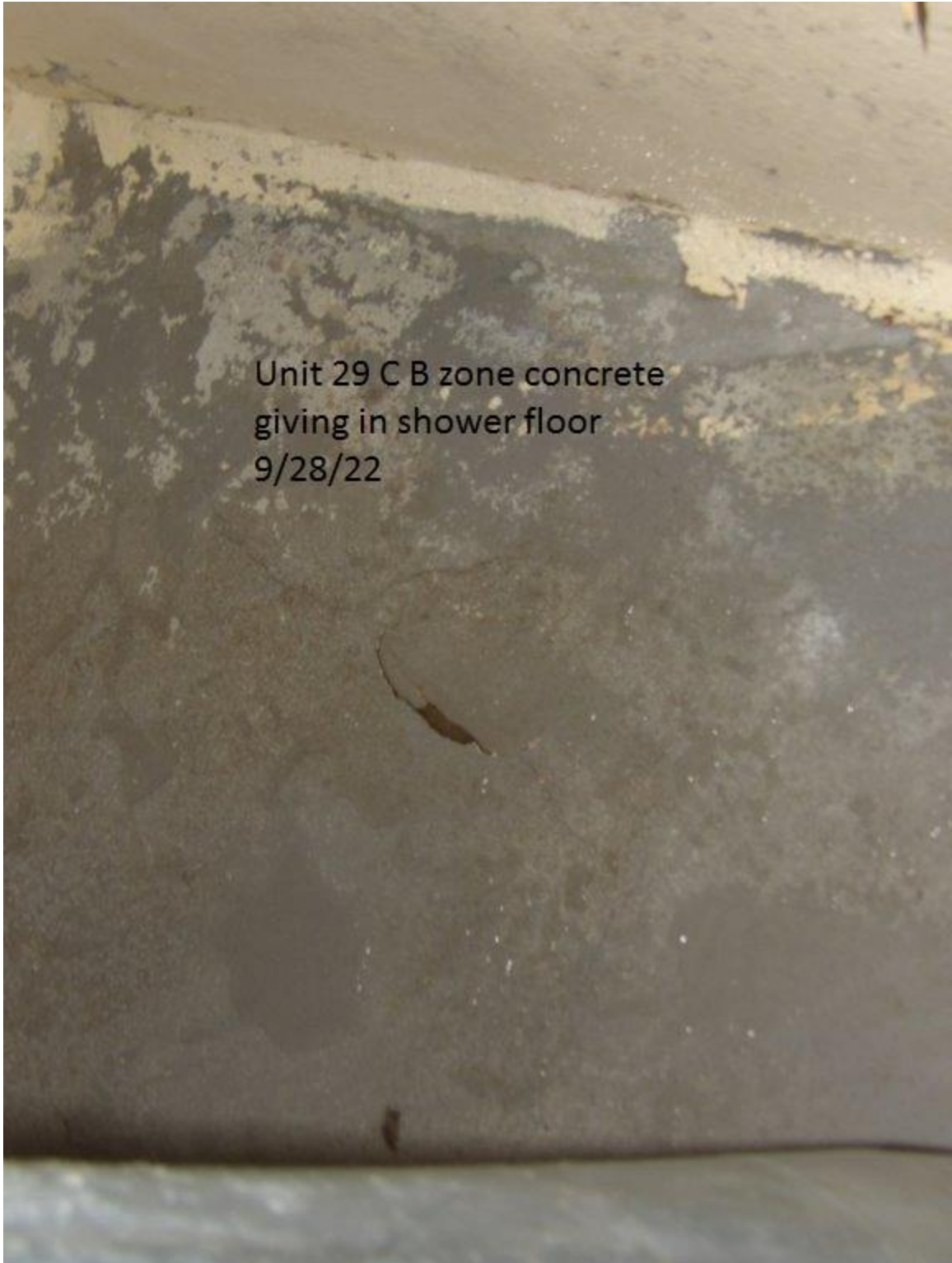
Unit 29 C A zone top tier
exposed wires from socket
beside bed #39 9/28/22



Unit #29 - C-Bldg. A-Zone Top tier has exposed electrical wires from receptacle



Unit #29 - C-Bldg. B-Zone ceiling metal panel is hanging



Unit #29 - C-Bldg. B-Zone shower floor has a sink hole



Unit 29 C B zone above
bed #82 ceiling leaking
9/28/22

Unit #29 - C-Bldg. B-Zone ceiling leaks above Bed #82



Unit 29 C B zone cell #86
sink has no cold water
9/28/22

Unit #29 - C-Bldg. B-Zone cell #86 lavatory cold water does not work



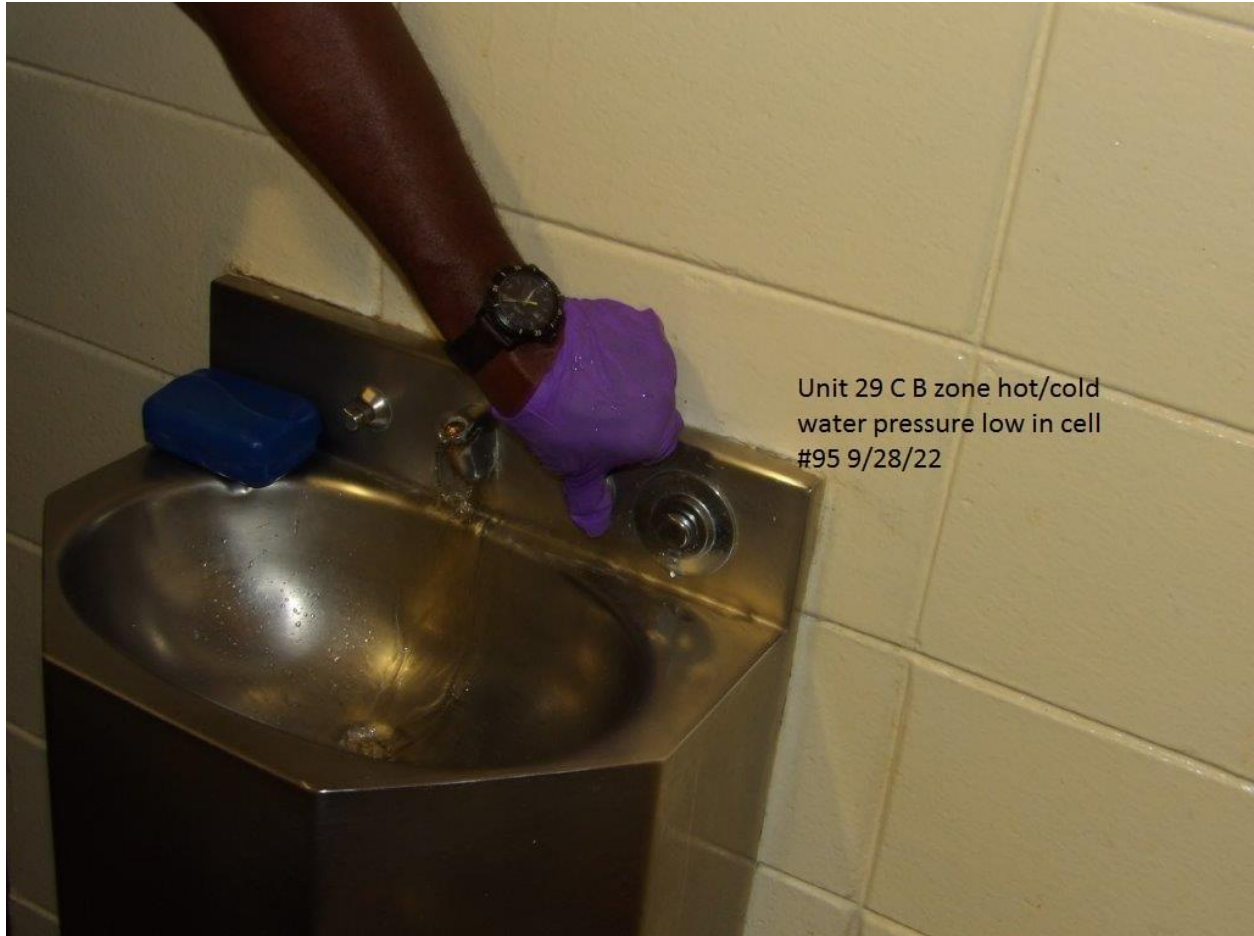
Unit 29 C B zone bird nest
in window above bed #90
9/28/22

Unit #29 - C-Bldg. B-Zone window has a bird nest above Bed #90



Unit 29 C B zone bird nest
in window above bed #94
9/28/22

Unit #29 - C-Bldg. B-Zone window has a bird nest above Bed #94



Unit 29 C B zone hot/cold
water pressure low in cell
#95 9/28/22

**Unit #29 - C-Bldg. B-Zone cell #95 lavatory hot and cold water
pressure is low**



Unit #29 - C-Bldg. B-Zone electrical receptacle is hanging out of the wall



Unit 29 C B zone hole in
wall above bed #98
9/28/22

Unit #29 - C-Bldg. B-Zone wall has a hole at the top



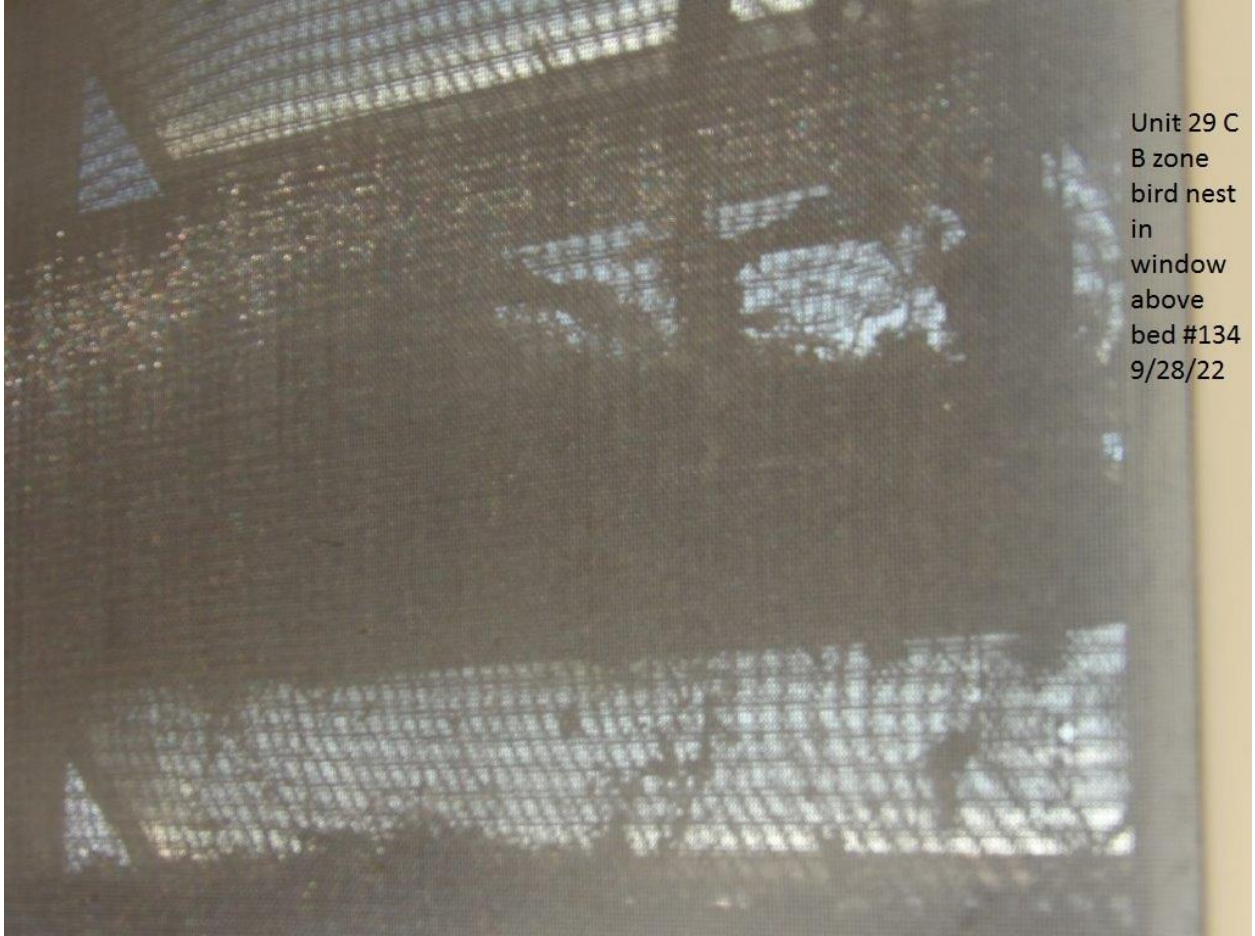
Unit 29 C B zone window
missing behind bed #98
9/28/22

Unit #29 - C-Bldg. B-Zone cell #98 window is missing



Unit 29 C B zone
bird nest in
window behind
bed #138
9/28/22

Unit #29 - C-Bldg. B-Zone cell #138 window is covered with bird nests



Unit #29 - C-Bldg. B-Zone cell #134 window is covered with bird nests



Unit #29 - C-Bldg. B-Zone cell #128 window has a bird nest



Unit 29 C B zone exposed
wires above bed #128
9/28/22

**Unit #29 - C-Bldg. B-Zone cell #128 light fixture is missing with
exposed electrical wires**



Unit 29 C B zone torn
screen above bed #126
9/28/22

Unit #29 - C-Bldg. B-Zone cell #126 window screen is torn



Unit 29 C B zone torn
screen above bed #122
9/28/22

Unit #29 - C-Bldg. B-Zone cell #122 window screen is torn